

COVERSHEET

Planned document changes:

Briefly:

No planned changes.

Document changes:

Date:	Change:	Rev. after change:
2026-05-27	Options corrected.	E
2023-12-15	Layout/irrelevant.	D
2023-11-06	DC3 added.	C
2021-12-22	Photos added.	B
2021-06-28	Missing washer for ECO added.	A
2020-04-15	New document.	-

Readers note:

Indicates instruction.

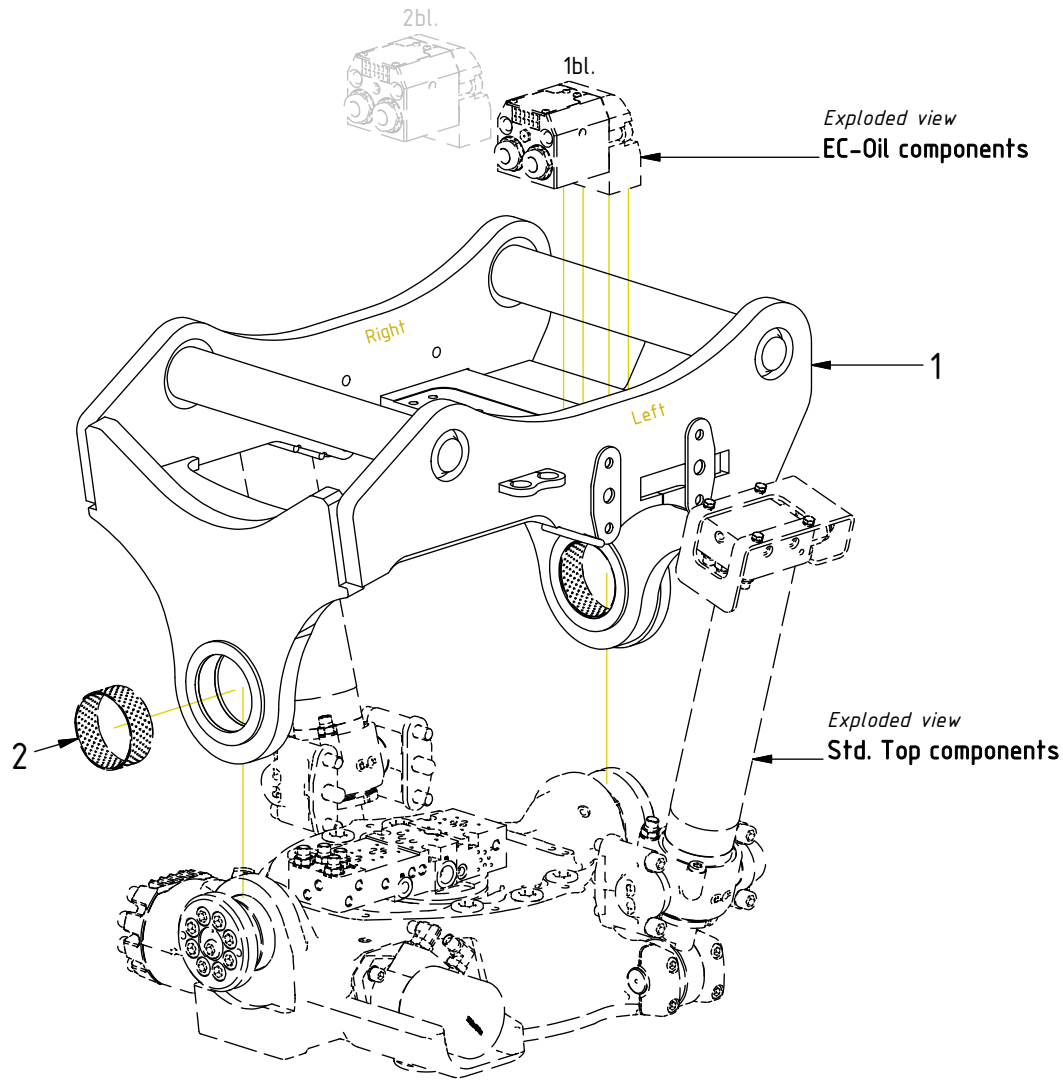


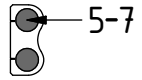
Represents Hose.

Dashed lines for overview, mounts
on other pages/assemblies.

POS	DESCRIPTION	PART	QTY	COMMENTS
1	Top part QS70 EC226S	1064571	1	(POS.2 incl.)
2	Bushing WB802 100/105 L40	630320	2	

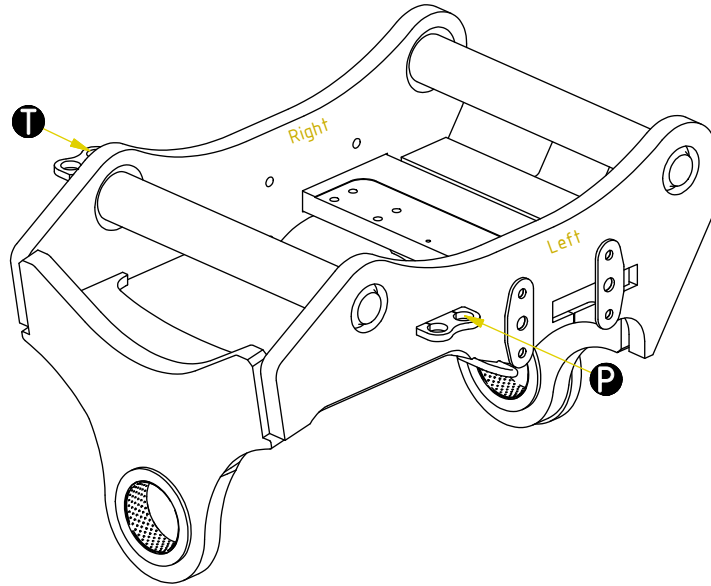
POS in order of assembly



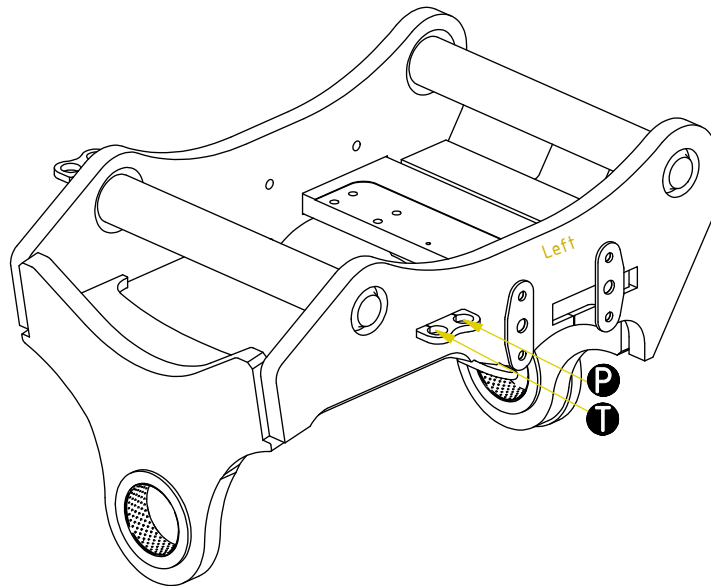


FEED
3/4" (std)

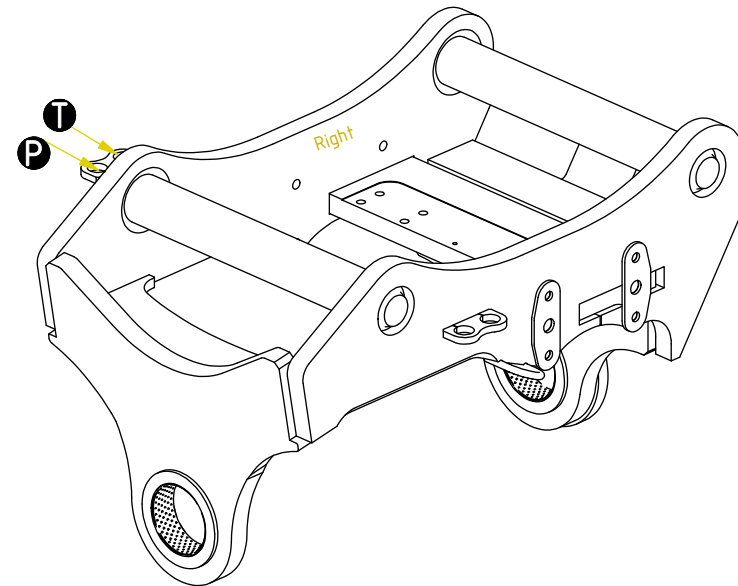
Main feed



Feed Left



Feed Right



POS	DESCRIPTION	PART	QTY	COMMENTS
3	For optional functions / terminals			See "Std. Top components"
4	For Feed Hoses			See "Control system"
5	Washer NL 1"	611095	2	
6	Adapter 1260-12-57 (3/4")	712227	2	
7	Counternut 1270-12 (3/4")	712211	2	

POS in order of assembly

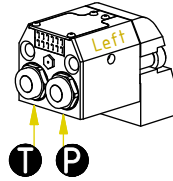
- T** ← 9
- P** ← 9
- cap** ← 9-10
- R** ← 11-13
- drn** ← 14-15

FEED

EC-Oil

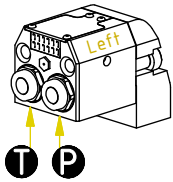
DC3

2 hyd.

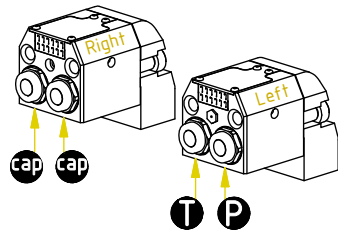


DC2, ss10 (SVAB)

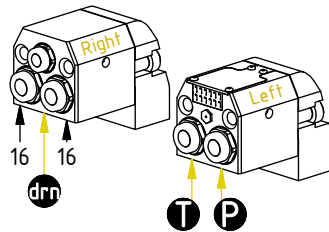
2 hyd.



4 hyd.

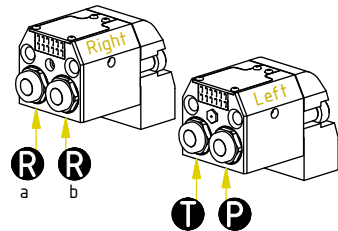


DC2 5 hyd.

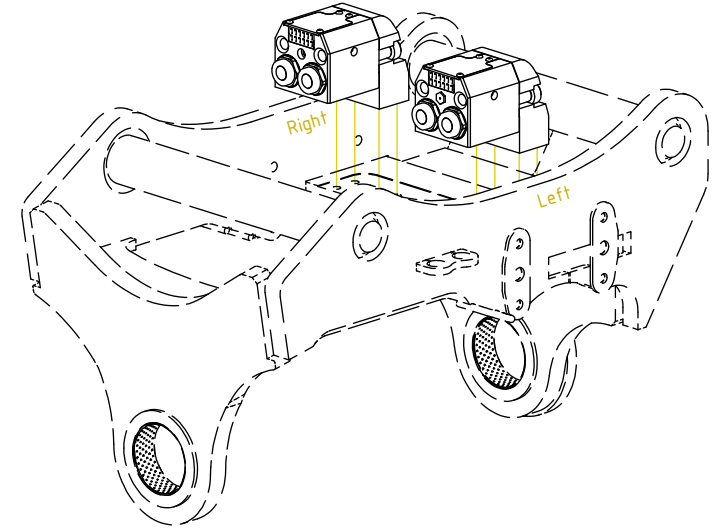


ss9

4 hyd.



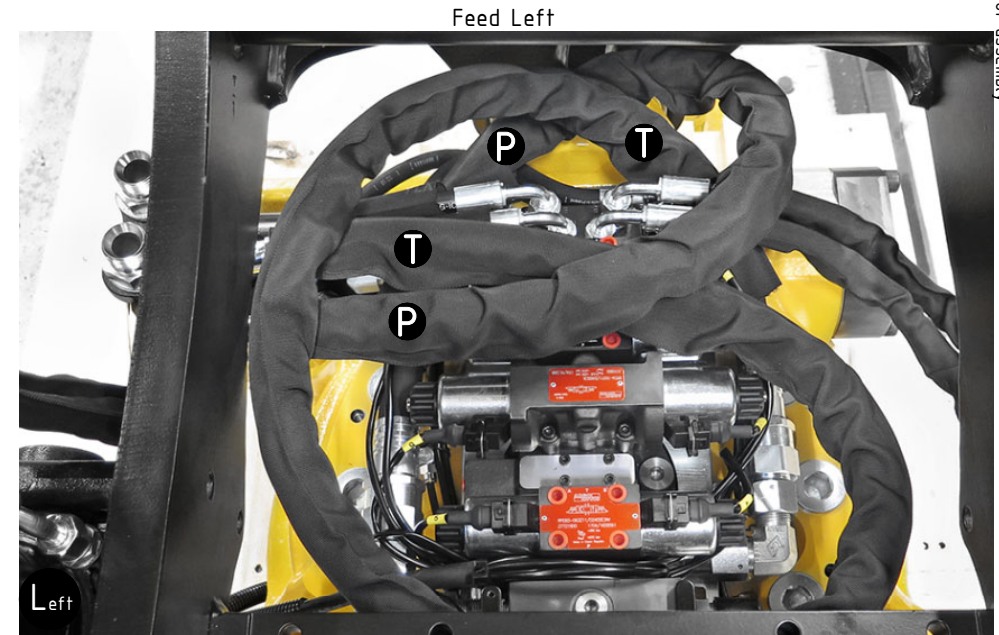
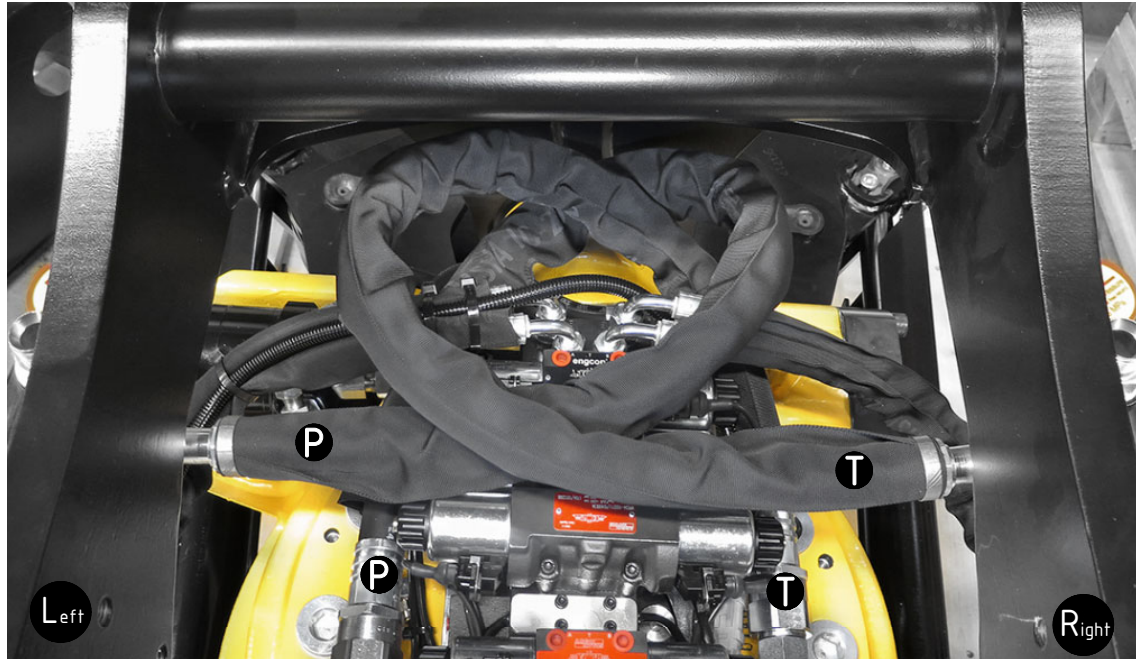
POS	DESCRIPTION	PART	QTY	COMMENTS
4	For Feed Hoses			See "Control system"
9	Adapter 401-08-12 90° (1/2"-3/4")	710155	2	
10	Protective Bonnet 155-08 (1/2")	711627	2	
11	Washer GBR06 3/8	710703	2	
12	Adapter 234-12-06	710234	2	
13	Adapter 401-06-06 90° (3/8")	710152	2	
14	Washer GBR08 1/2	710704	1	
15	Adapter 235-08-06	7000705	1	
16	Plug 70125-12 (3/4")	711532	2	



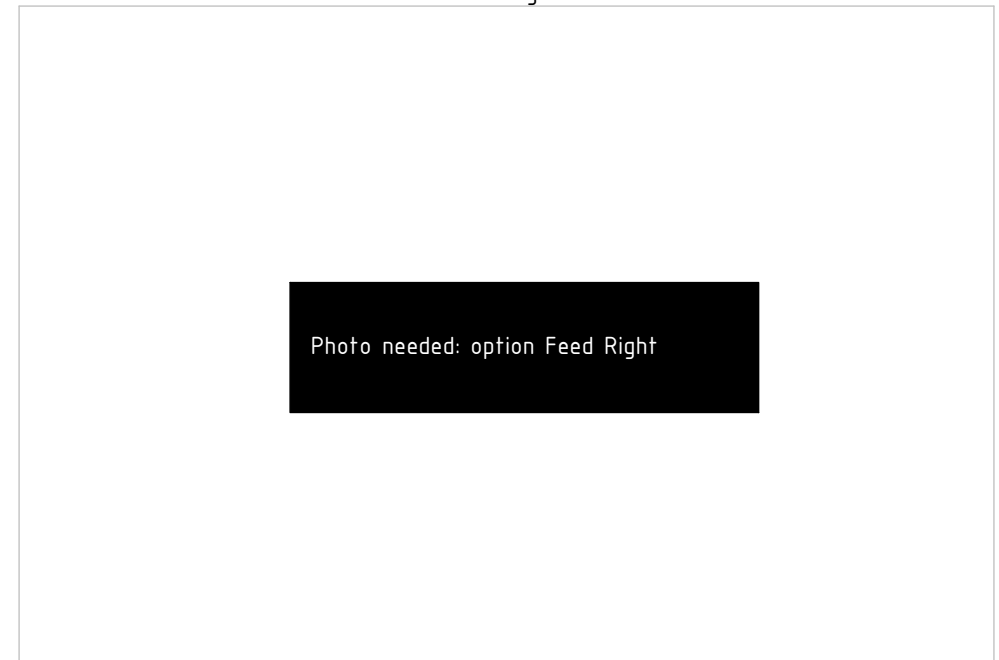
POS in order of assembly

FEED
3/4" (std)

POS	DESCRIPTION	PART	QTY	COMMENTS
3	For optional functions / terminals			See "Std. Top components"
4	For Feed Hoses			See "Control system"

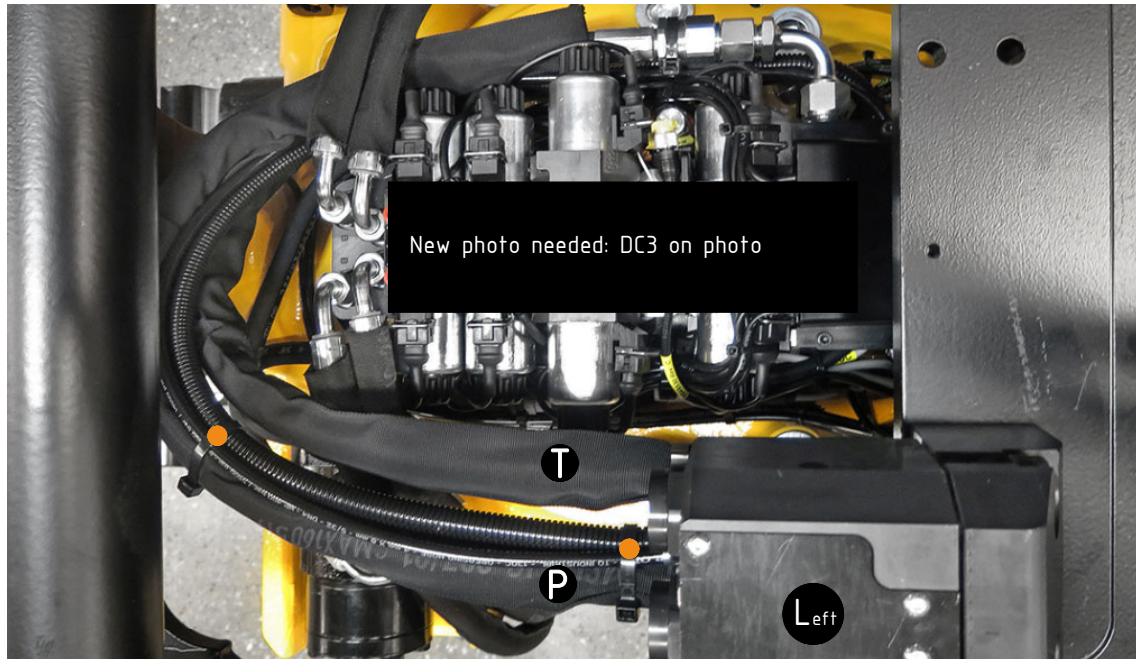


Feed Right

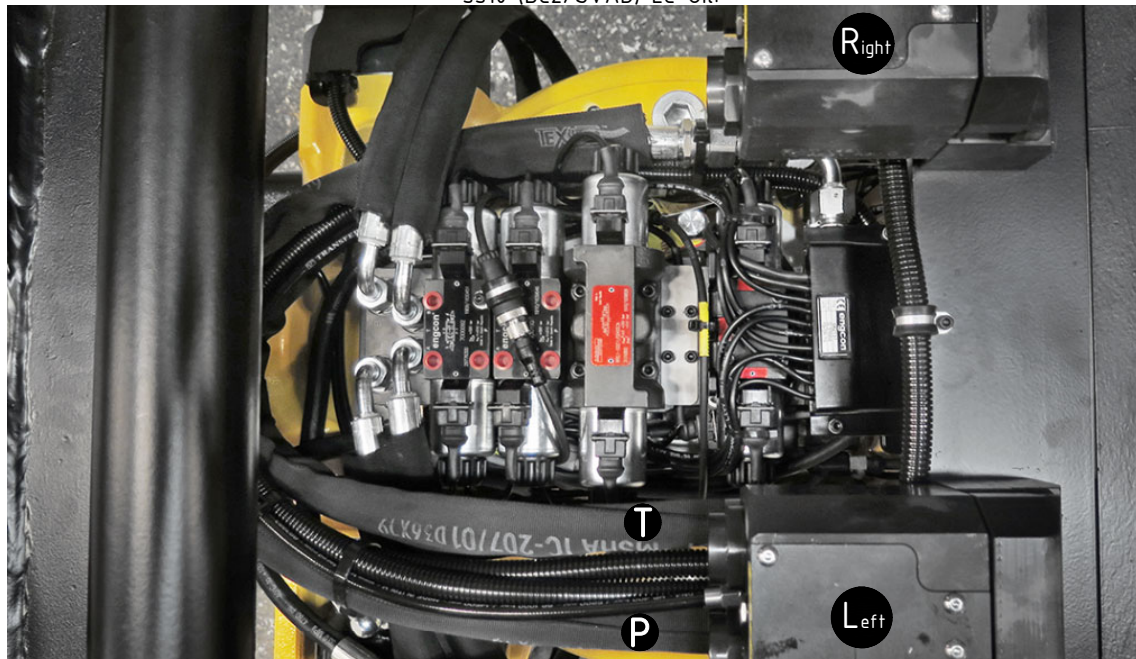


POS in order of assembly

FEED
DC3 EC-Oil:

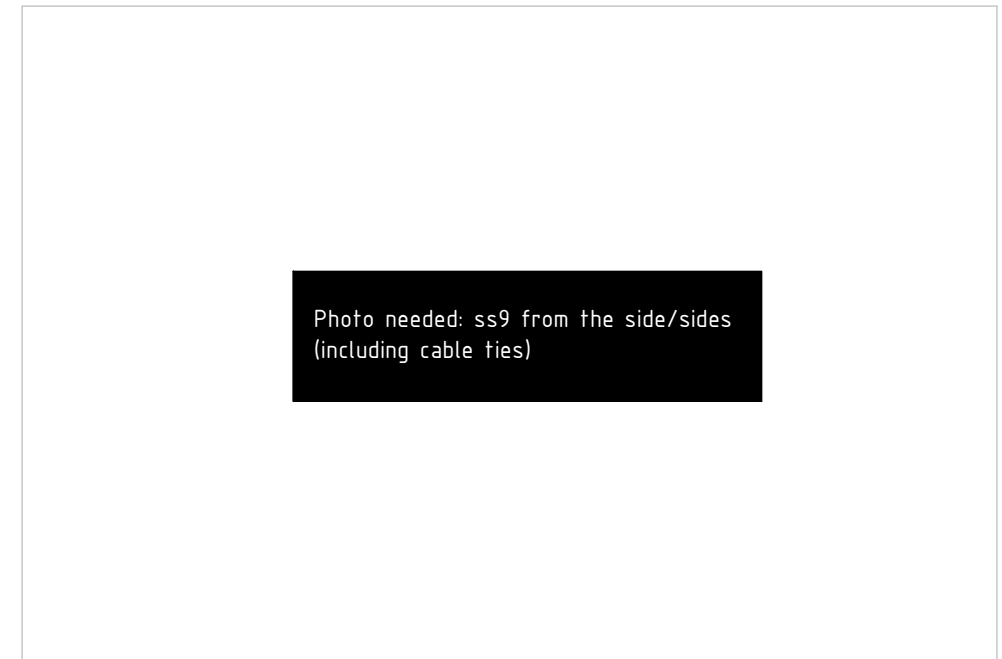


ss10 (DC2/SVAB) EC-Oil:



POS	DESCRIPTION	PART	QTY	COMMENTS
4	For Feed Hoses			See "Control system"
●	Use cable ties			

ss9 EC-Oil:



POS in order of assembly