

EC226 ECHF - UNI Top part

COVERSHEET



Planned document changes:

Breifly:
No planned changes.

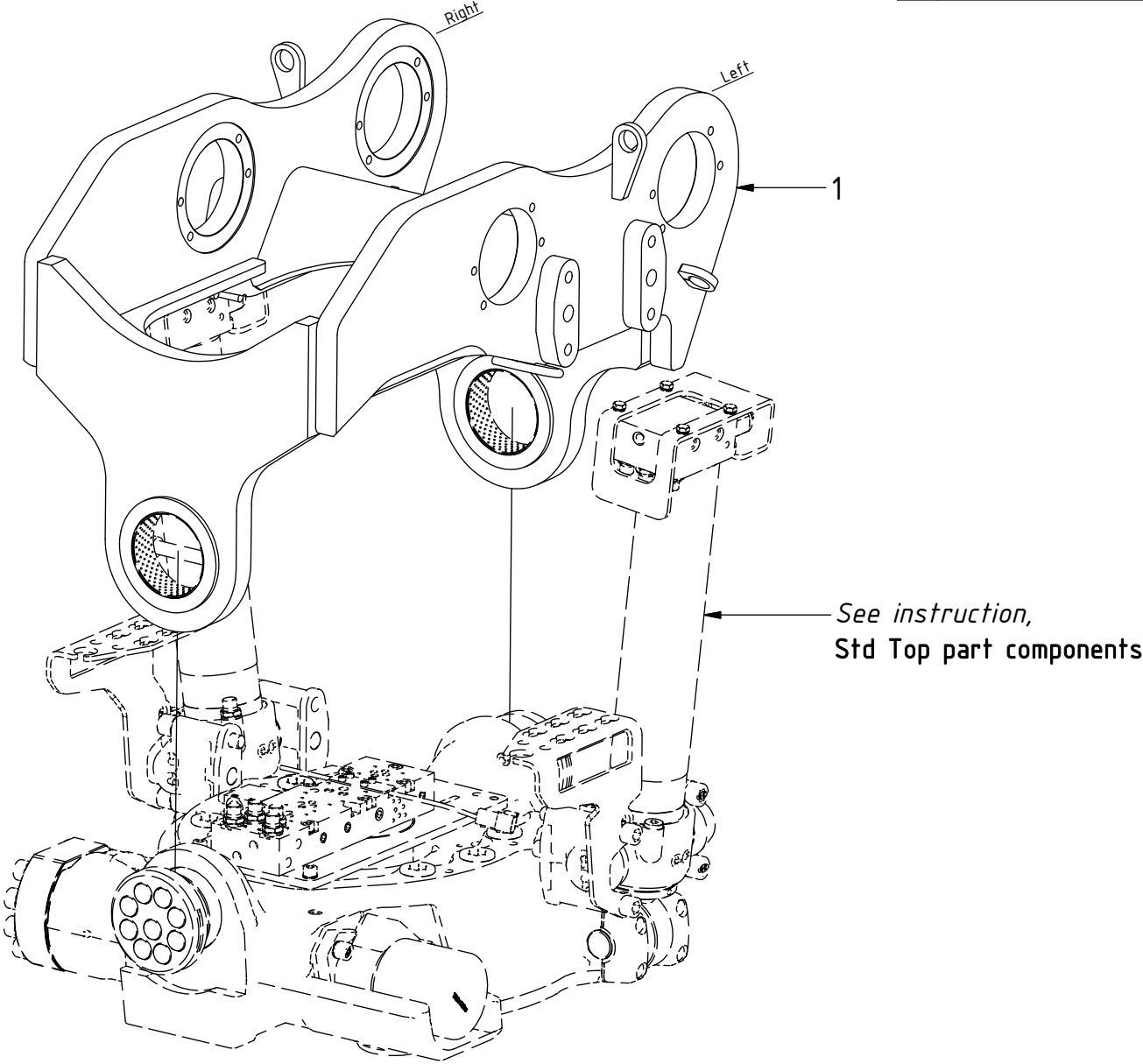
Document changes:

Date:	Change:	Rev. after change:
2020-01-30	Photos added.	C
2018-06-18	Layout/irrelevant.	B
2017-08-30	Layout/irrelevant.	A
2017-07-12	Photos added.	-
2017-07-05	New instruction.	-

EC226 ECHF - UNI Top part

POS	DESCRIPTION	PART	QTY	COMMENTS
1	Top part UNI is selected via engcon		1	

POS in order of assembly



EC226 ECHF - UNI Top part

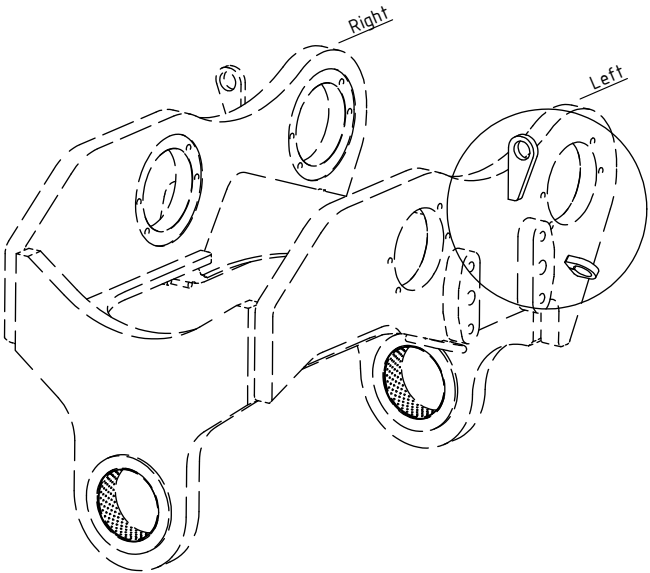
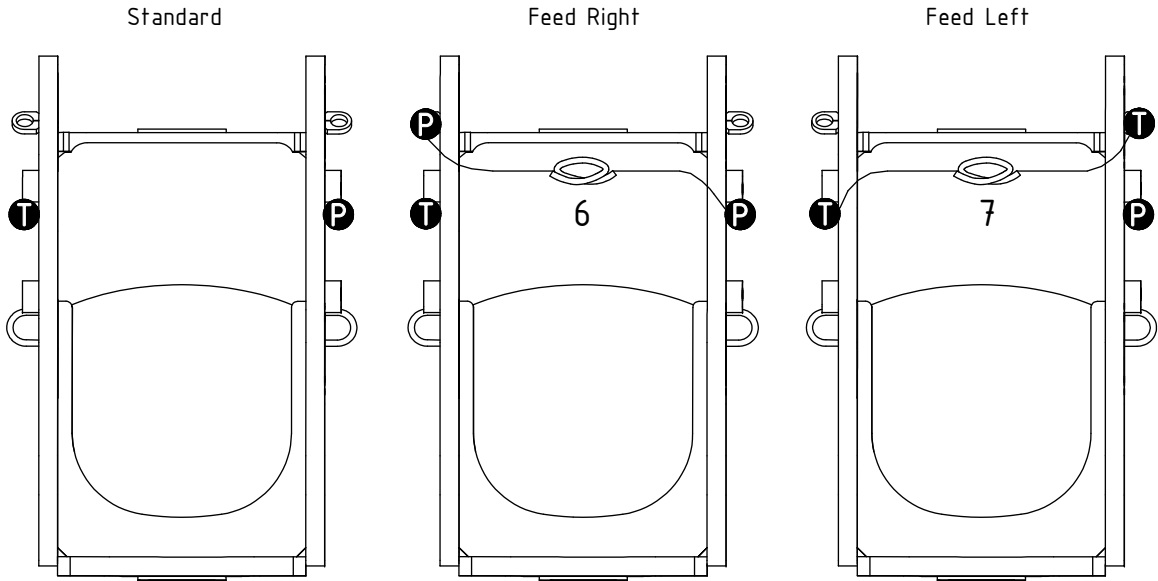
P = 2
T = 2

FEED
3/4" (Std)

Main Feed

POS	DESCRIPTION	PART	QTY	COMMENTS
2	Use washer, adapter, nut: POS.3, 4, 5			QTY depends on config. (2-3)
3	Washer NL 1"	611095	2	
4	Bulkhead adapter 3/4"	712210	2	
5	Bulkhead adapter nut	712211	2	
6	Hose Bridge Feed Right	7000048	1	
7	Hose Bridge Feed Left	7000049	1	
	Attach feed hoses from control system			(a & b represents channels on feed block)

POS in order of assembly



EC226 ECHF - UNI Top part

FEED
3/4" (Std)

POS	DESCRIPTION	PART	QTY	COMMENTS
6	Hose Bridge Feed Right	7000048	1	
7	Hose Bridge Feed Left	7000049	1	
8	Cable tie 7,8x360	1021587	1	
	Attach feed hoses from control system			(a & b represents channels on feed block)

