

EC209 - CW10 Top part

COVERSHEET

Planned document changes:

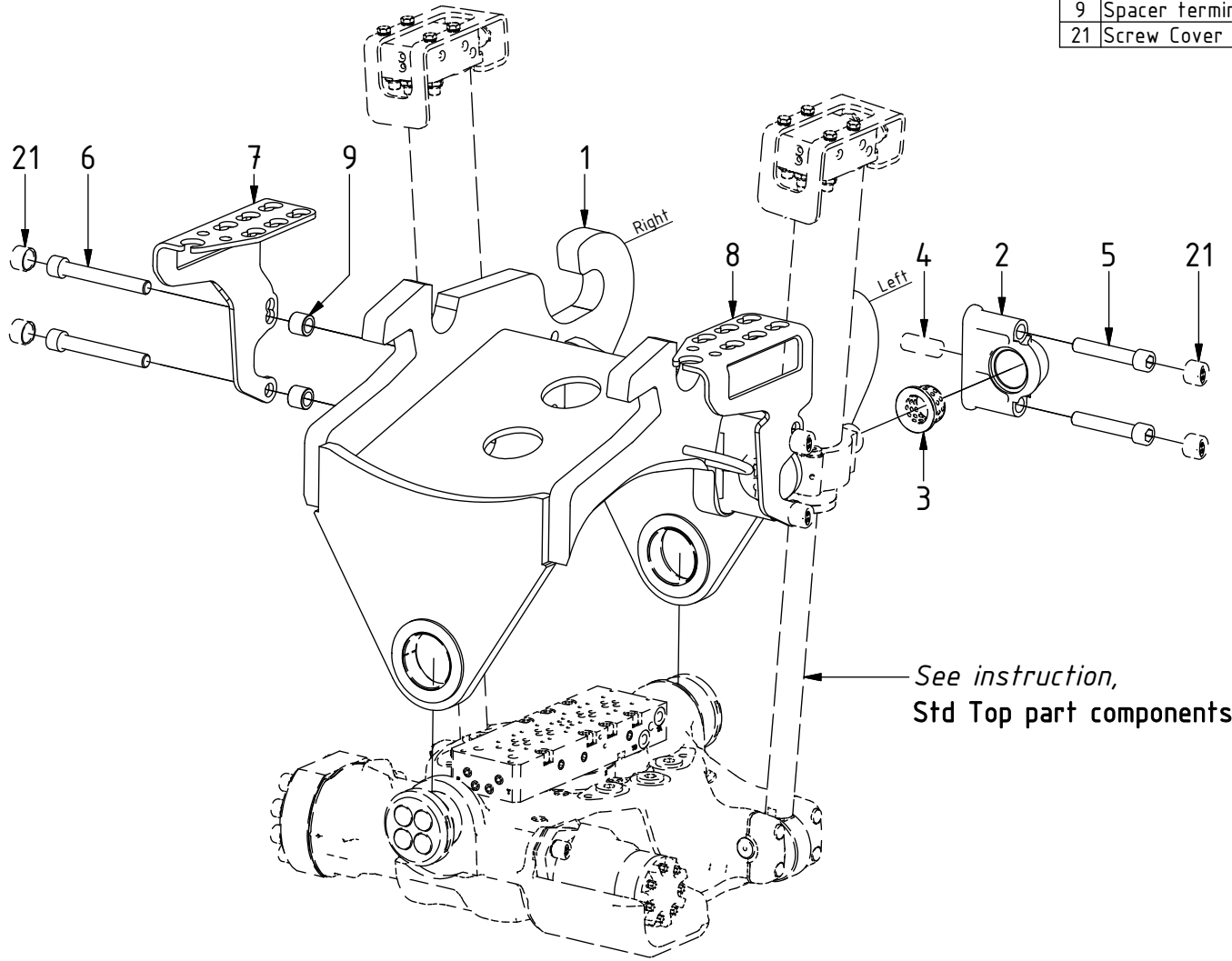
Breifly:
No planned changes.

Document changes:

Date:	Change:	Rev. after change:
2018-11-09	Photos replaced.	A
2018-05-17	New instruction.	-

EC209 - CW10 Top part

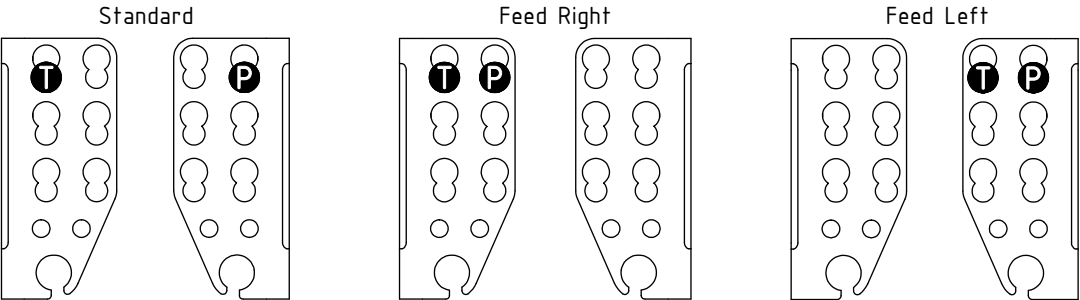
POS	DESCRIPTION	PART	QTY	COMMENTS
1	Top part CW10	1025552	1	
2	Yoke bracket	1023212	4	(POS.3-4 included)
3	Bushing BWG-F 35/45/55/5x30	631003	4	
4	Cylindrical pin CPK ø20x50	650211	4	
5	Screw MC6S 16x90	610530	4	Torque: 333Nm
6	Screw MC6S 16x120	610534	4	Torque: 333Nm
7	Hose terminal 8-hoses Right V2	1047138	1	
8	Hose terminal 8-hoses Left V2	1047137	1	
9	Spacer terminal	1023777	4	
21	Screw Cover M16	611302	8	Part of make up



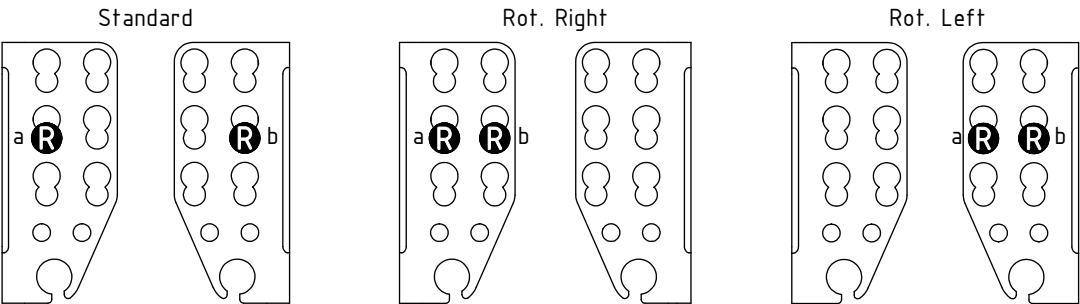
- P = 10
- T = 10
- R = 10
- L = 14
- tilt = 15

FEED:

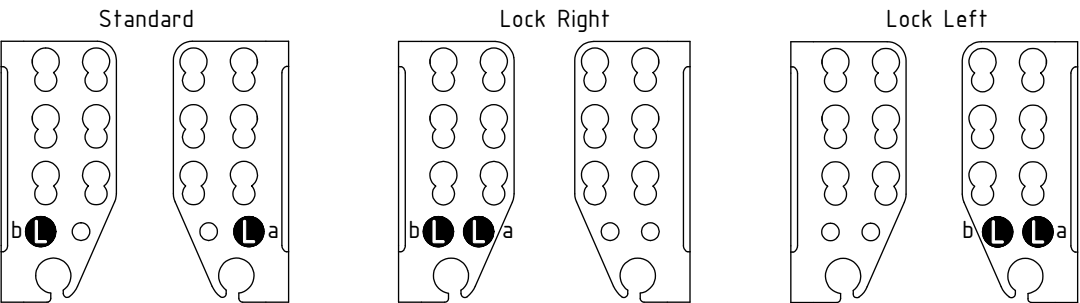
Main feed



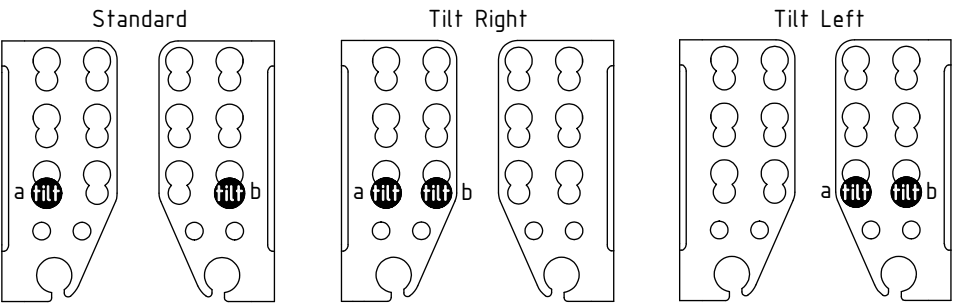
Rotation



Lock (SQ)



Tilt (ST)



POS	DESCRIPTION	PART	QTY	COMMENTS
10	Use washer, adapter, nut according to POS.11, 12, 13			QTY depends on terminal holes
11	Washer NL 16mm	611044	2	
12	Adapter 1260-06-32 (3/8")	710242	2	
13	Bulkhead adapter nut (3/8")	710252	2	
14	Use washer, adapter, nut according to POS.16, 17, 19			QTY depends on terminal holes
15	Use washer, adapter, o-ring, nut according to POS.16, 17, 18, 19			QTY depends on terminal holes
16	Washer NL 1/2"	611096	2	
17	Adapter 1260-04-04 (1/4")	710240	2	
18	O-ring 12,37x2,62	710961	2	
19	Bulkhead adapter nut (1/4")	710250	2	
20	Attach feed hoses from control system			(a & b represents channels on feed block)

POS in order of assembly

EC209 - CW10 Top part

POS	DESCRIPTION	PART	QTY	COMMENTS
20	Attach feed hoses from control system			(a & b represents channels on feed block)

POS in order of assembly

