

## Planned document changes:

**Briefly:**

No planned changes.

## Document changes:

<b>Date:</b>	<b>Change:</b>	<b>Rev. after change:</b>
2025-04-11	Washers and shims added.	J
2022-02-18	Missing reference added.	I
2021-03-30	Bracket info corrected.	H
2019-04-23	Coversheet added.	G

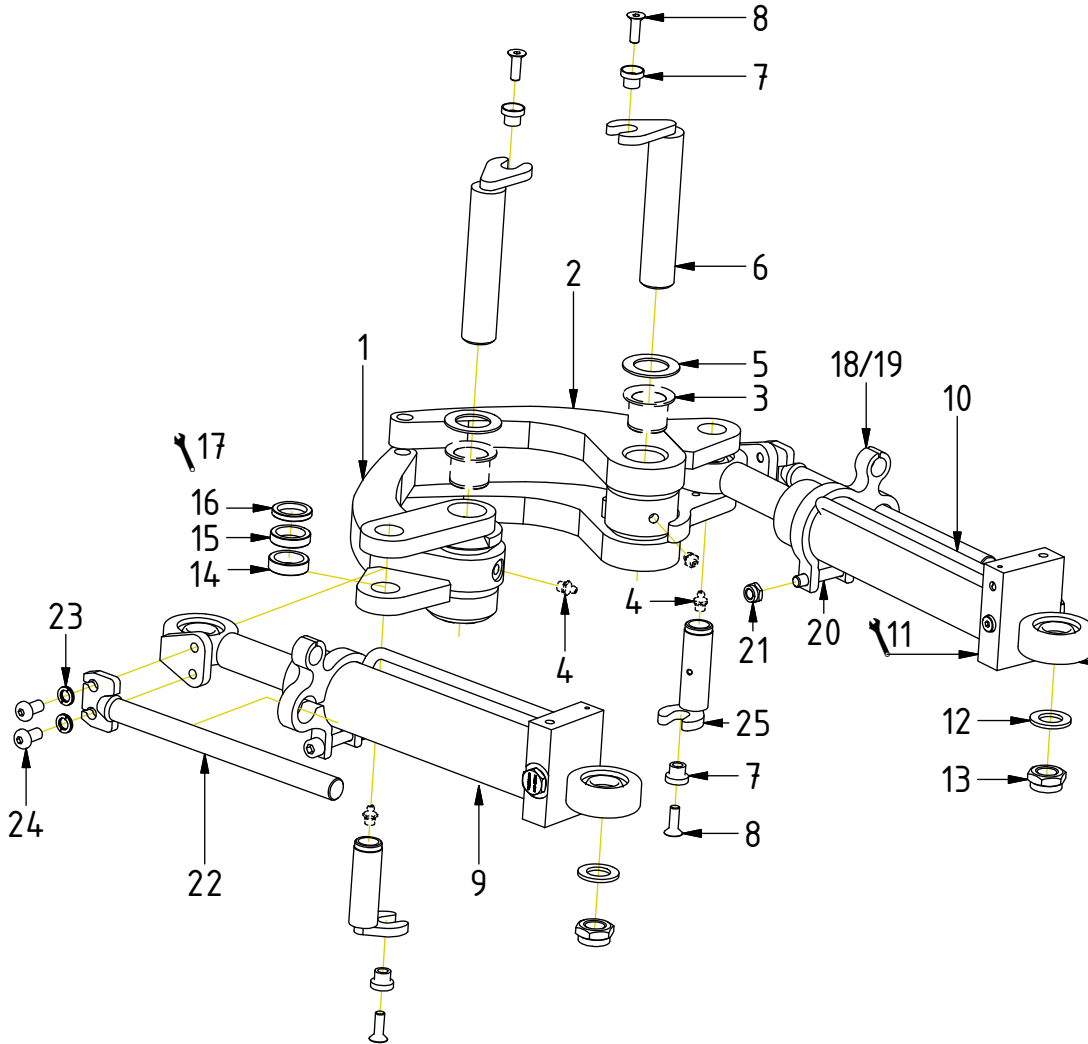
*Readers note:*

Indicates instruction.



Represents Hose.

Dashed lines for overview, mounts  
on other pages/assemblies.



POS	DESCRIPTION	PART	QTY	COMMENTS
1	Grab arm (single) Complete	200921K	1	(POS.3-4 incl.)
2	Grab arm (double) Complete	200922K	1	(POS.3-4 incl.)
3	Bushing 30/34/45x30	630401	4	
4	Grease Nipple	711403	4	
5	Spacer 2mm	405235	2	
6	Axle grab arm	402885	2	
7	Countersink spacer	400659	4	
8	Screw MF6S M8x25 10.9 FZB	610608	4	Loxal 83-52
9	Grab cylinder L Complete	301900K	1	
10	Grab cylinder 05 R Complete	301901K	1	
11	Adapters according to Quick hitch			See "Quick hitch"
12	Flat Washer	611010	2	
13	Lock Nut M6M M20x2,5 8,8 FZB	610928	2	
14	Spacer 10mm Grab arm	402171	1	Used if required
15	Spacer 8mm Grab arm	402170	1	Used if required
16	Spacer 5mm Grab arm	402615	1	Used if required
17	Spacers as tight ass possible. Widest spacer underneath cyl. ear			
18	Bracket grab protec. for extra	1025563	2	For EC204B, EC204, EC206
19	Bracket grab protec. without extra	403385	2	For EC05B
20	Screw MC6S M10x60 12.9	610460	2	
21	Lock Nut M6M M10x1,5 8,8 FZB	610923	2	
22	Grab protection 05 blacknite	201251	2	
23	Washer NL 10mm	611041	4	
24	Screw K6S M10x20 10.9 FZB	611812	4	
25	Axle grab cyl. (against grab arm)	402598	2	(POS.4 incl.)

Exploded view  
Grab cylinder