

COVERSHEET

Planned document changes:

Briefly:

Add DC3 to ECO blocks. (Same as DC2 std. config.)
Separate the ss10:s so they each have a heading (DC2 and SVAB).

POS.1 replaced by 1064189.

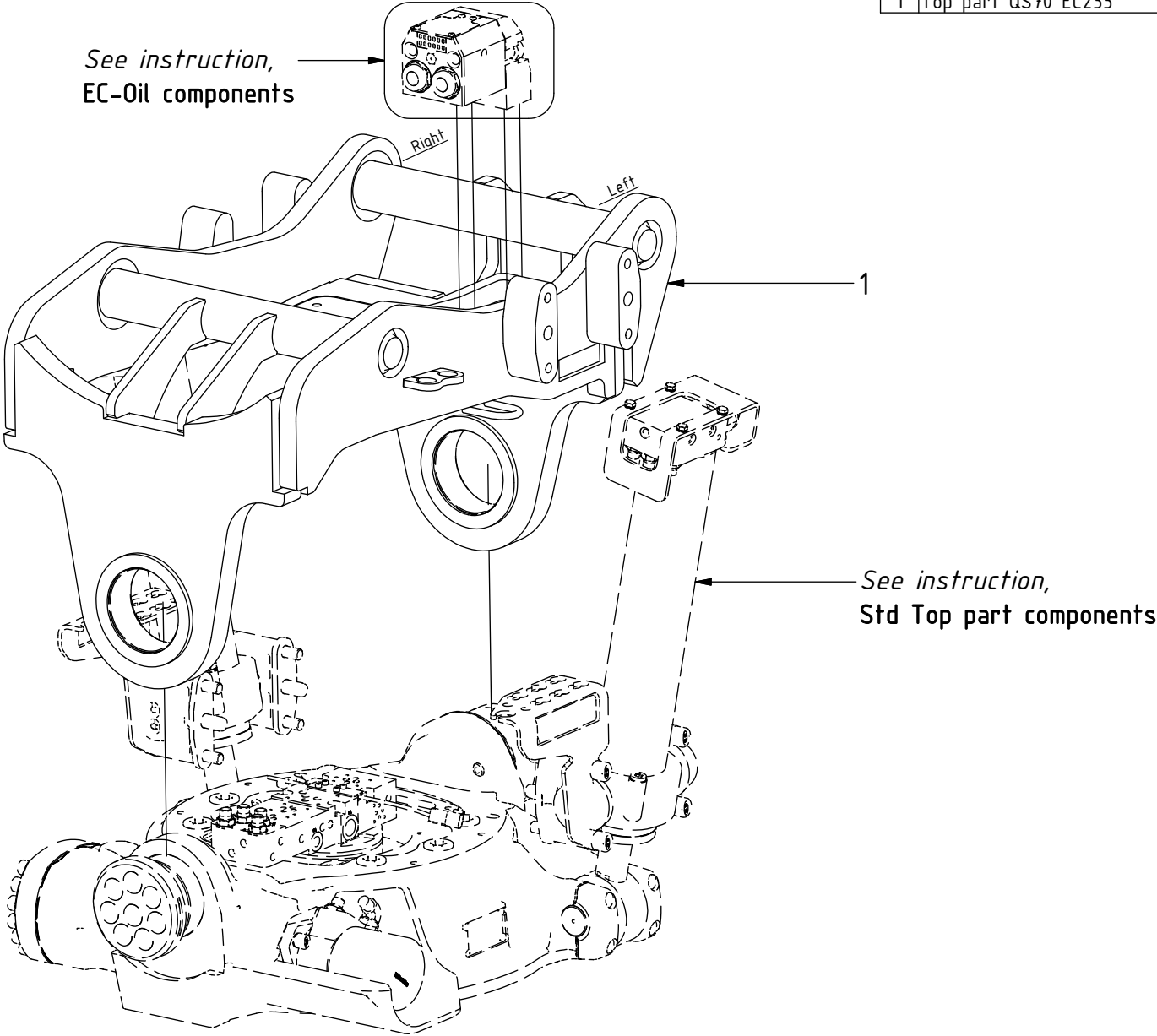
Document changes:

Date:	Change:	Rev. after change:
2019-09-05	New instruction.	-

EC233 QSM - QS70 Top part

POS	DESCRIPTION	PART	QTY	COMMENTS
1	Top part QS70 EC233	1039076	1	

POS in order of assembly



EC233 QSM - QS70 Top part

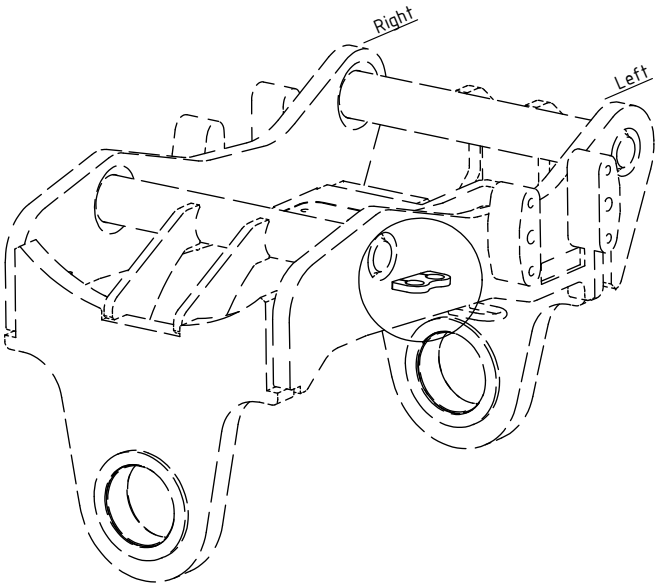
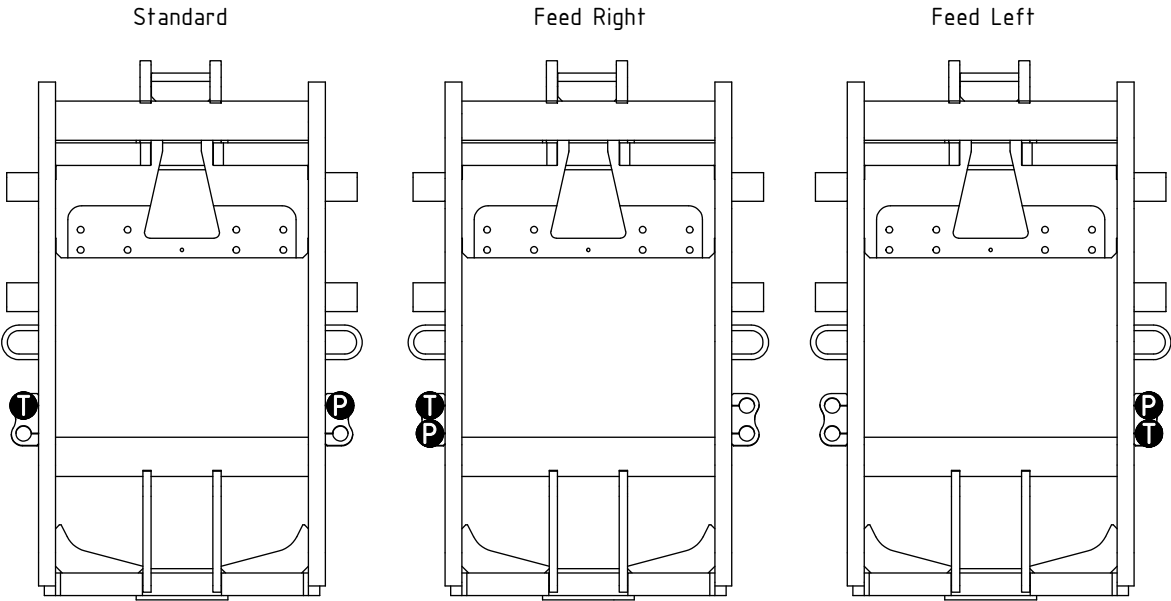
P = 2
T = 2

FEED
3/4" (Std)

Main Feed

POS	DESCRIPTION	PART	QTY	COMMENTS
2	Use washer, adapter, nut: POS.3, 4, 5			
3	Washer NL 1"	611095	2	
4	Adapter 1260-12-57 (3/4")	712227	2	
5	Counternut 1270-12 (3/4")	712211	2	
	Attach feed hoses from control system			(a & b represents channels on feed block)

POS in order of assembly



EC233 QSM - QS70 Top part

- P = 7, 8
- T = 7, 8
- cap = 9
- R = 8

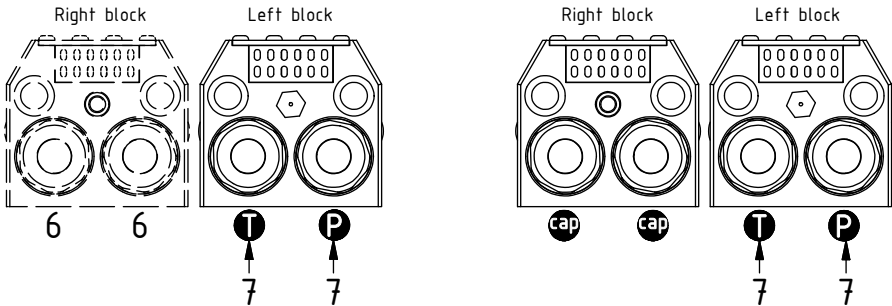
FEED
Top EC-Oil

POS	DESCRIPTION	PART	QTY	COMMENTS
6	Plug 70125-12 (3/4")	711532	2	
7	Adapter 401-12-12 90° (3/4")	712201	2	
8	Adapter 401-08-12 90° (1/2"-3/4")	710155	2	QTY depends on config. (2-4)
9	Use adapter, cap: POS.8, 10			
10	Protective cap	711627	2	
	Attach feed hoses from control system			(a & b represents channels on feed block)

ss10

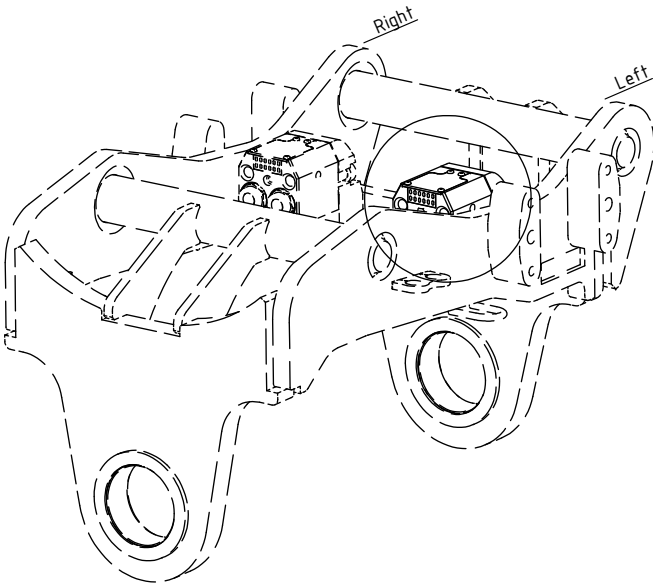
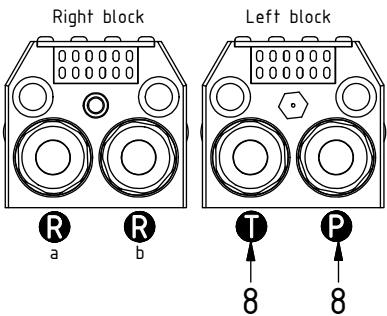
2 hyd. (Std)

4 hyd.



ss9

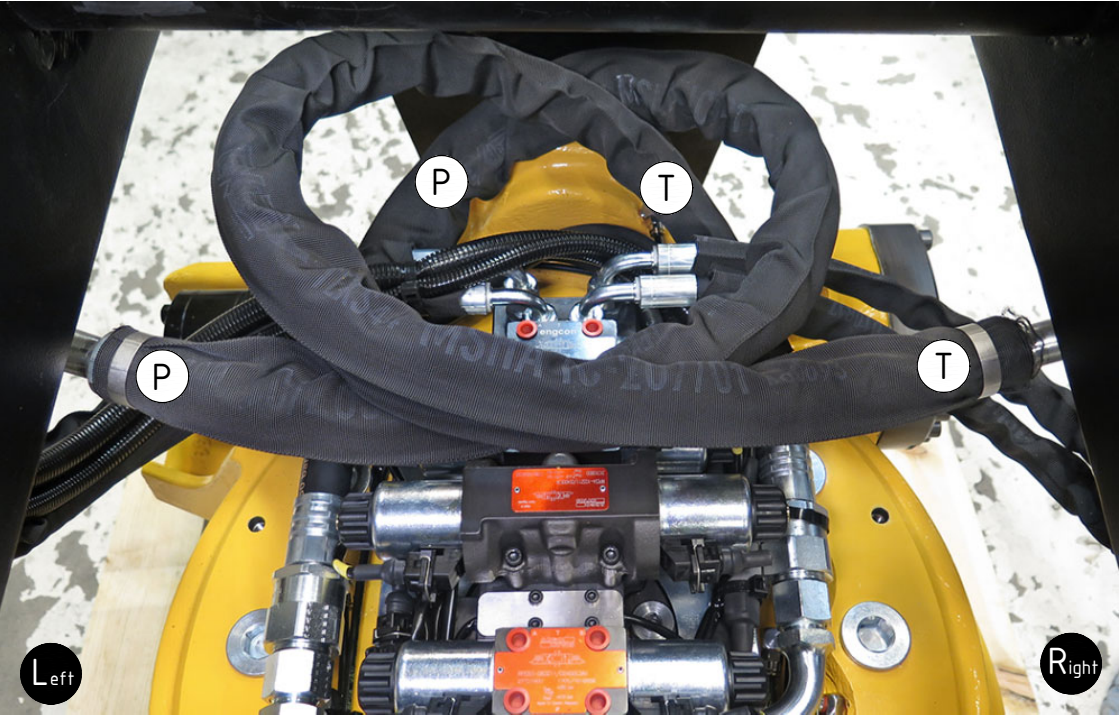
4 hyd. (Std)



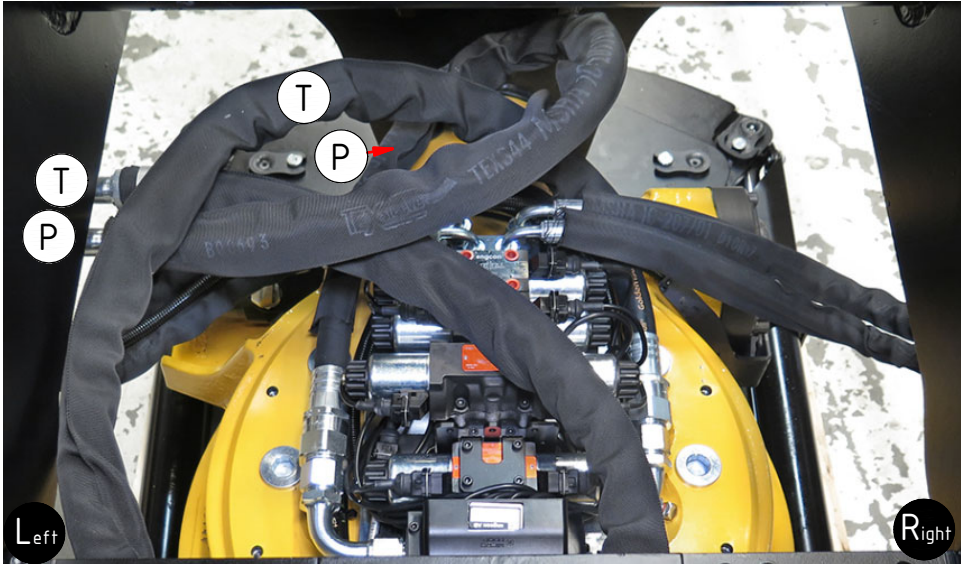
EC233 QSM - QS70 Top part

FEED
3/4" (Std)

POS	DESCRIPTION	PART	QTY	COMMENTS
	Attach feed hoses from control system			(a & b represents channels on feed block)



Feed Left:



Feed Right:



EC233 QSM - QS70 Top part

FEED
Top EC-Oil
ss10 (2 hyd.)

POS	DESCRIPTION	PART	QTY	COMMENTS
	Attach feed hoses from control system			(a & b represents channels on feed block)

ss9 (4 hyd.)

Photo needed: ss10 from above. T+P hoses, and right block even though DC2 doesn't have it

Photo needed: ss9 from above. T+P and Ra+Rb hoses

Photo needed: ss10 seen from left

Photo needed: ss10 seen from right

Photo needed: ss9 seen from left

Photo needed: ss9 seen from right