

EC226 ECHF - S2 Top part

COVERSHEET



Planned document changes:

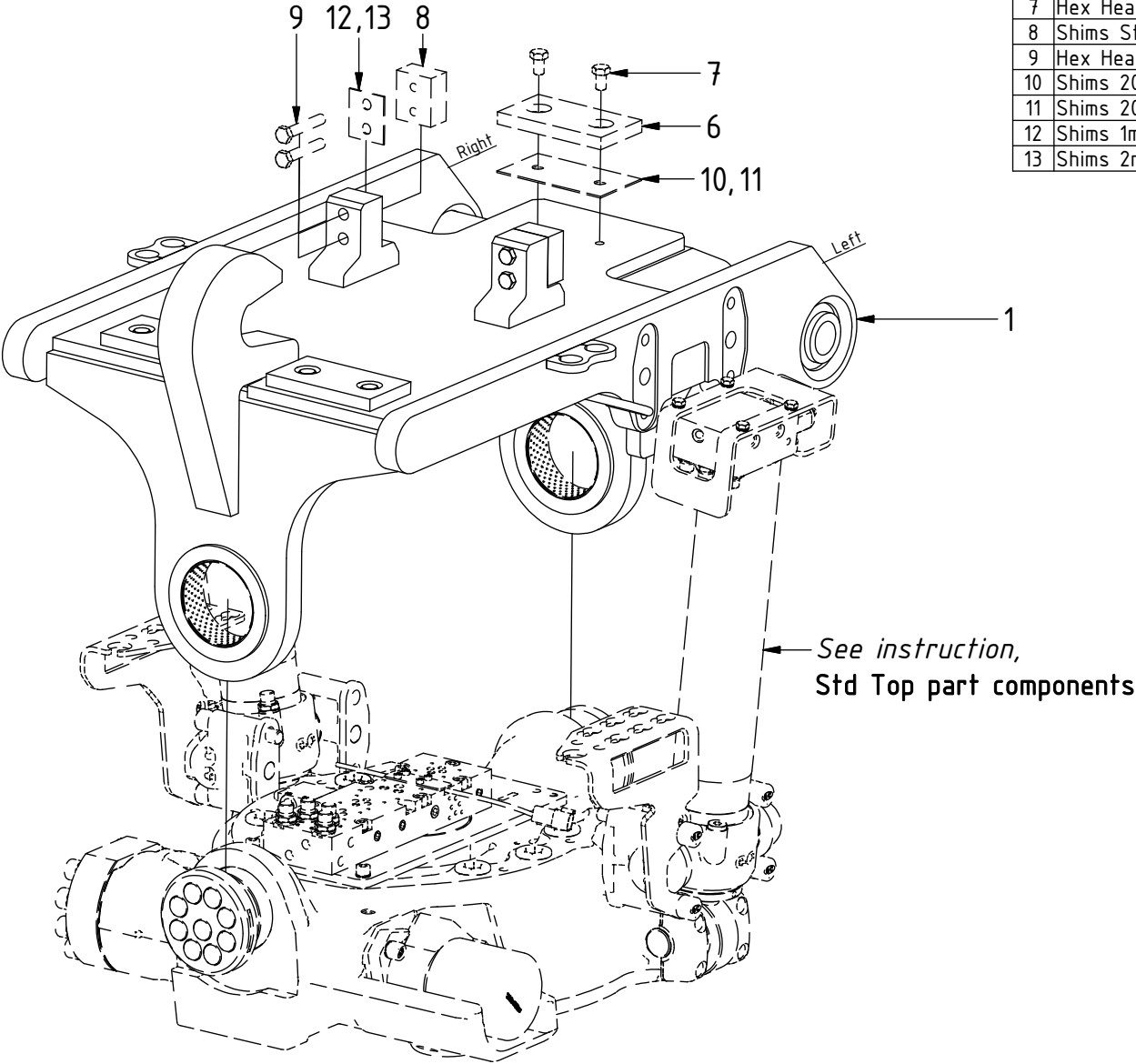
Breifly: _____
No planned changes.

Document changes:

Date:	Change:	Rev. after change:
2018-06-18	Layout/irrelevant.	B
2017-08-30	Layout/irrelevant.	A
2017-07-05	New instruction.	-

EC226 ECHF - S2 Top part

POS	DESCRIPTION	PART	QTY	COMMENTS
1	Top part S2	1031362	1	
6	Shims S1 & S2	400069	3	(Included in Top part)
7	Hex Head Screw 12x20	610163	6	(Included in Top part)
8	Shims Stopper	401138	2	(Included in Top part)
9	Hex Head Screw 12x70	610172	4	(Included in Top part)
10	Shims 20 1mm	404512		Use if required (Spare part only)
11	Shims 20 2mm	404513		Use if required (Spare part only)
12	Shims 1mm	405153		Use if required (Spare part only)
13	Shims 2mm	405549		Use if required (Spare part only)



EC226 ECHF - S2 Top part

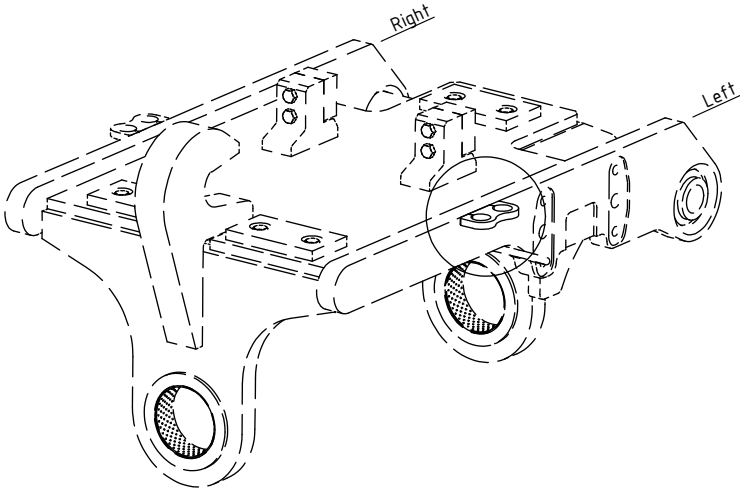
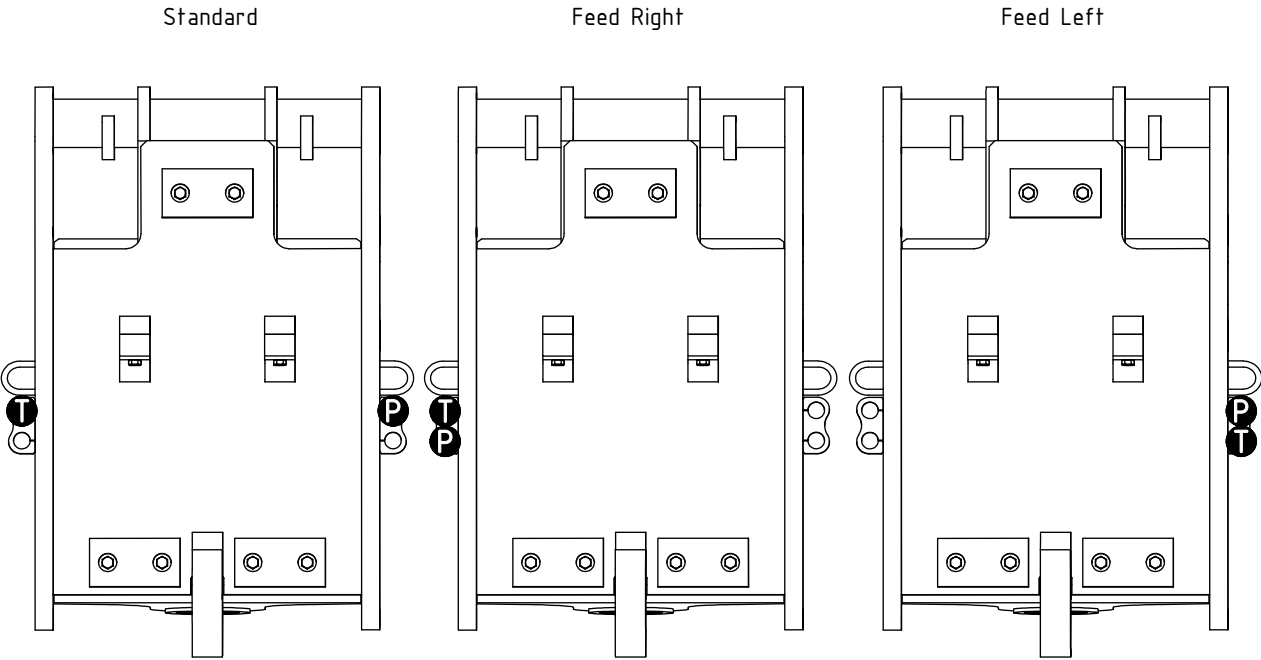
P = 2
T = 2

FEED:
3/4" (Std)

Main Feed

POS	DESCRIPTION	PART	QTY	COMMENTS
2	Use washer, adapter, nut according to POS.3, 4, 5			
3	Washer NL 1"	611095	2	
4	Bulkhead adapter extended 3/4"	712227	2	
5	Bulkhead adapter nut	712211	2	
	Attach feed hoses from control system			(a & b represents channels on feed block)

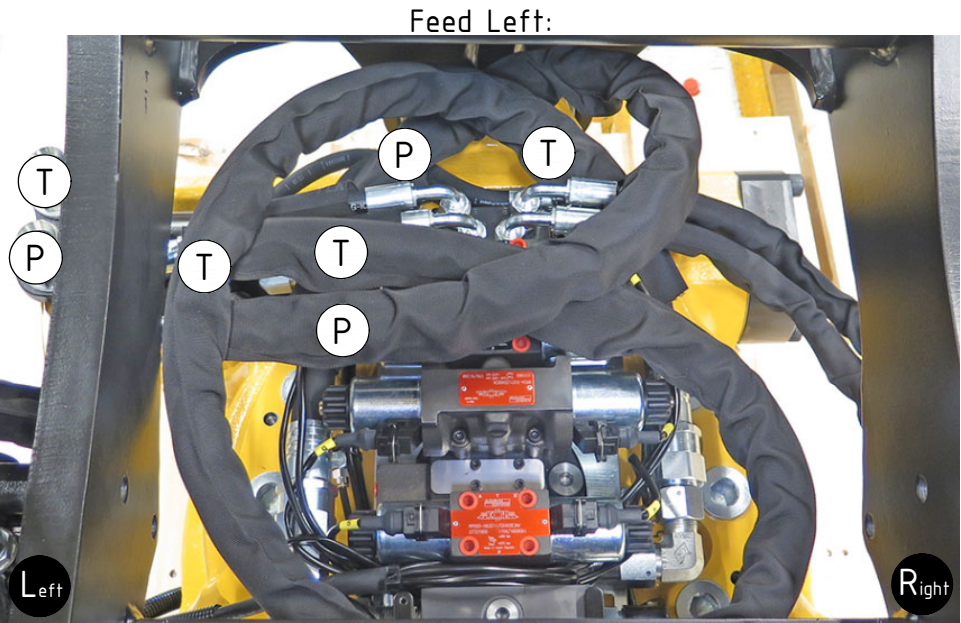
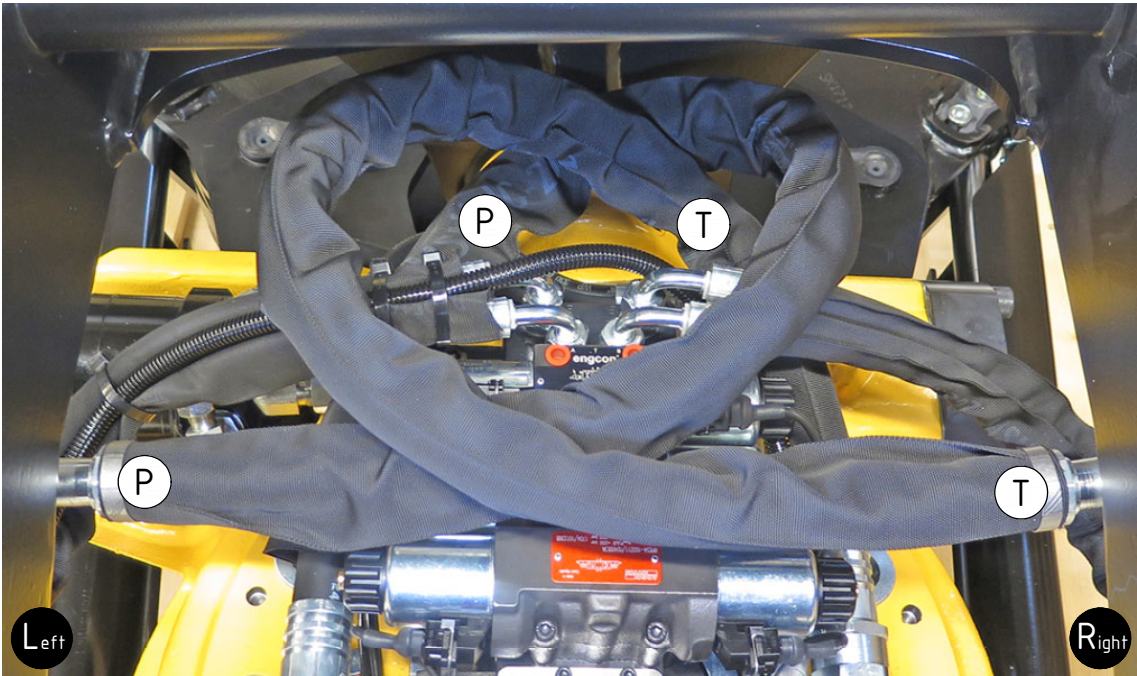
POS in order of assembly



EC226 ECHF - S2 Top part

FEED:
3/4" (Std)

POS	DESCRIPTION	PART	QTY	COMMENTS
	Attach feed hoses from control system			(a & b represents channels on feed block)



Feed Left:

Feed Right:

Photo needed:
Feed Right.

(alert documentation
when built in production)