

## COVERSHEET

## Planned document changes:


**Briefly:**


2026-03-09. POS.8 will be divided to two parts: 1080806 with 1080807. (Backwards compatible).

## Document changes:

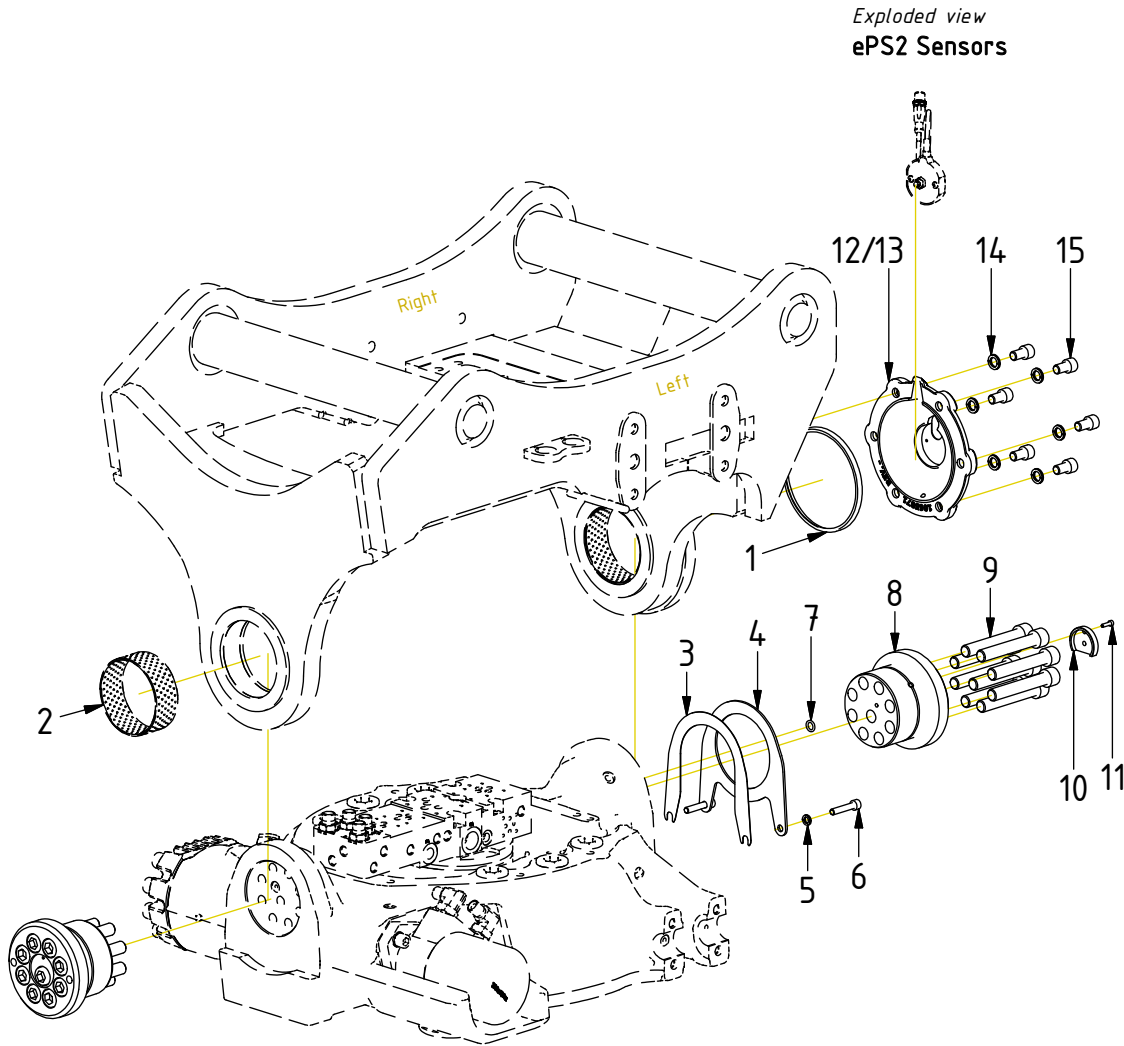
| <u>Date:</u> | <u>Change:</u>                                      | <u>Rev.<br/>after change:</u> |
|--------------|---|-------------------------------|
| 2026-05-27   | ss0 updated.  | G                             |
| 2026-02-02   | Tilt cylinder corrected.                            | F                             |
| 2023-10-31   | Photos added.                                       | E                             |
| 2022-09-07   | Seal for top part clarified.                        | D                             |
| 2022-05-12   | Details for EC226S added. (EC226 with ePS sensors). | C                             |
| 2021-12-22   | Photos added.                                       | B                             |
| 2020-10-13   | Screw lengths corrected.                            | A                             |
| 2020-04-15   | New document.                                       | -                             |

*Readers note:*

 Indicates instruction.

 Represents Hose.

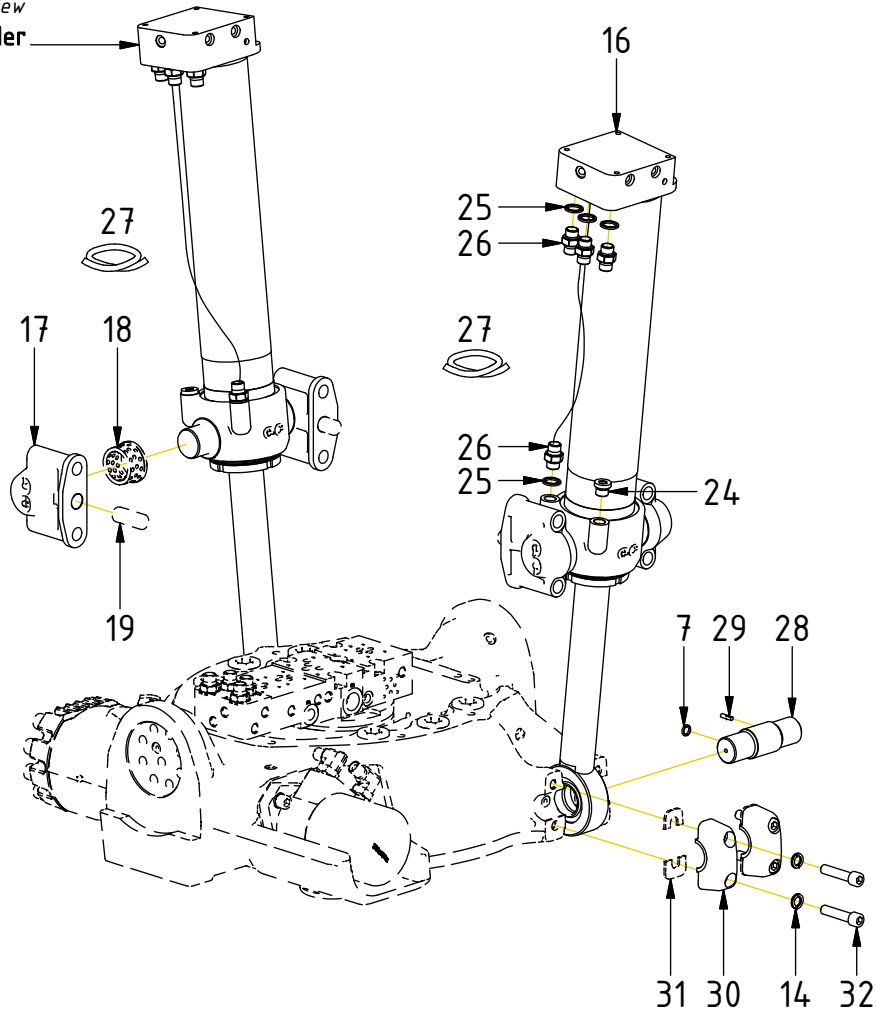
Dashed lines for overview, mounts  
on other pages/assemblies.



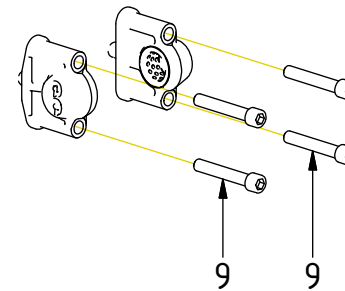
| POS | DESCRIPTION                      | PART    | QTY | COMMENTS                                       |
|-----|----------------------------------|---------|-----|--|
| 1   | Seal PAK-130x140x7-L             | 1064208 | 1   | Face groove toward top part                    |
| 2   | Bushing WB802 100/105 L40        | 630320  | 2   | (Incl. in Top part)                            |
| 3   | Shim tilt axle                   | 1011244 | 1   | Use as required                                |
| 4   | Tilt axial washer                | 1011238 | 1   |  |
| 5   | Washer NL 8mm                    | 611040  | 10  |  |
| 6   | Screw MC6S M8x40 12.9 ZFSHL      | 6000145 | 2   |  |
| 7   | O-ring 9,92x2,62                 | 710968  | 4   |  |
| 8   | Tilt axle EC226                  | 1064205 | 2   |  |
| 9   | Screw MC6S M16x100 12.9 ZFSHL    | 6000156 | 26  | QTY: 22 for ss0, ss9<br>Torque: 333Nm          |
| 10  | Magnet spacer tilt axle          | 1064185 | 1   | For EC226S                                     |
| 11  | Screw MC6S M4x14 8,8 FZB         | 610420  | 1   | For EC226S                                     |
| 12  | Cover tiltaxle EC226 Cast        | 1065871 | 1   | For EC226S                                     |
| 13  | Protection plate tilt axle EC226 | 1064718 | 1   | For EC226/EC226PS<br>Face the groove downwards |
| 14  | Washer NL 12mm                   | 611042  | 16  |  |
| 15  | Screw MC6S M12x20 12.9 ZFSHL     | 6000356 | 6   |  |

| POS | DESCRIPTION                         | PART    | QTY | COMMENTS                              |
|-----|-------------------------------------|---------|-----|---------------------------------------|
| 7   | O-ring 9,92x2,62                    | 710968  | 4   |                                       |
| 9   | Screw MC6S M16x100 12.9 ZFSLH       | 6000156 | 26  | QTY: 22 for ss0, ss9<br>Torque: 333Nm |
| 16  | Tilt cylinder EC226                 | 1072285 | 2   |                                       |
| 17  | Yoke EC226 complete                 | 1017151 | 4   | (POS.18-19 incl.)                     |
| 18  | Bushing 40/50/55/5-30               | 631001  | 4   |                                       |
| 19  | Cylindrical pin $\varnothing$ 20x50 | 650211  | 4   |                                       |
| 20  | Spacer 20mm                         | 1023777 | 4   |                                       |
| 21  | Hose terminal Left V2               | 1047137 | 1   |                                       |
| 22  | Hose terminal Right V2              | 1047138 | 1   |                                       |
| 23  | Screw MC6S M16x130 12.9 ZFSLH       | 6000154 | 4   | Torque: 333Nm                         |
| 24  | Plug 70125-06 (3/8")                | 711504  | 2   |                                       |
| 25  | Washer GBR06 3/8                    | 710703  | 8   |                                       |
| 26  | Adapter 136-06-06 (3/8")            | 710106  | 8   |                                       |
| 27  | Hose Tilt Short                     | 742308  | 2   |                                       |
| 28  | Cylinder axle $\varnothing$ 40      | 1016398 | 2   |                                       |
| 29  | Slotted pin 5x20                    | 640413  | 2   |                                       |
| 30  | Clamping half 35 Complete           | 1016393 | 4   | (POS.31 incl.)                        |
| 31  | Rubber spacer clamping half         | 1016439 | 4   |                                       |
| 32  | Screw MC6S M12x55 12.9 ZFSLH        | 6000155 | 8   | Torque: 136Nm                         |

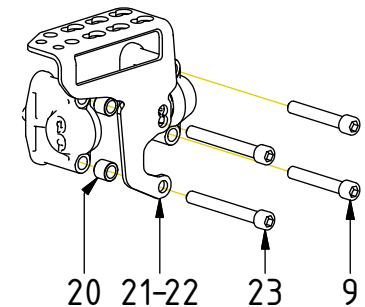
Exploded view  
Tilt cylinder



Std fasteners



ss0, ss9

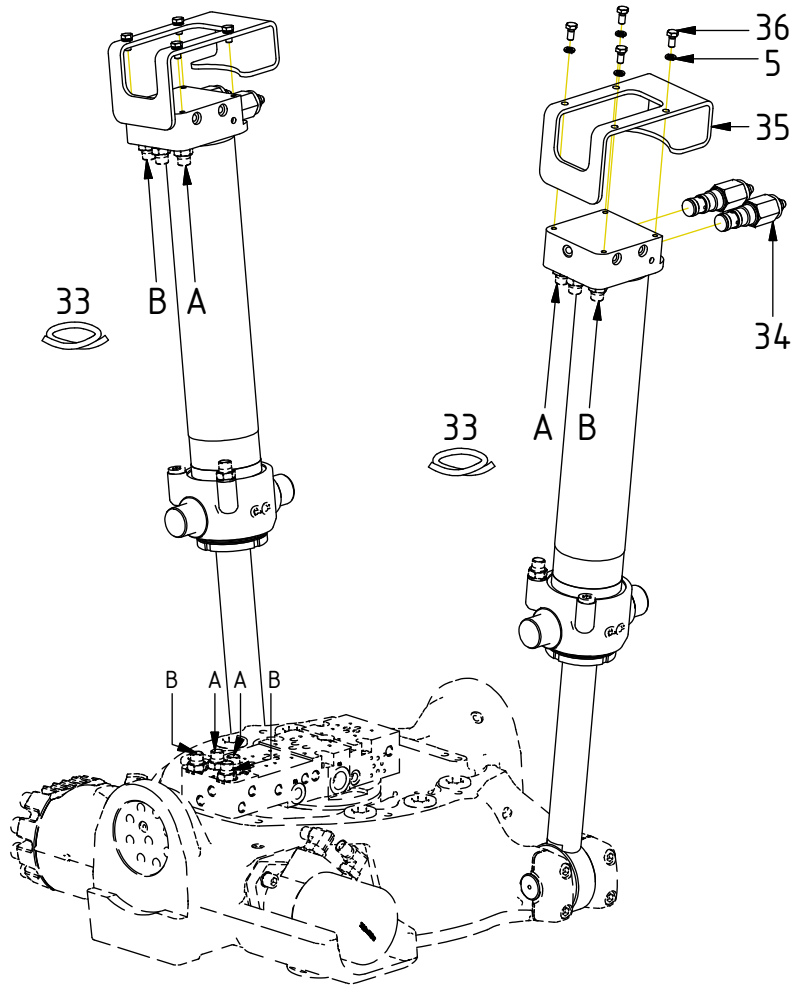


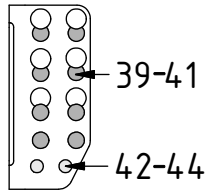
POS in order of assembly

## TILT

| POS | DESCRIPTION                  | PART    | QTY          | COMMENTS |
|-----|------------------------------|---------|--------------|----------|
| 5   | Washer NL 8mm                | 611040  | 10           |          |
| 33  | Hose Tilt Long               | 7000031 | 4            |          |
| 34  | Overcentre valve 4:1         | 730277  | Torque: 60Nm |          |
| 35  | Hose protection Tiltcylinder | 1014280 | 2            |          |
| 36  | Screw M6S M8x16 8,8 FZB      | 610122  | 8            |          |

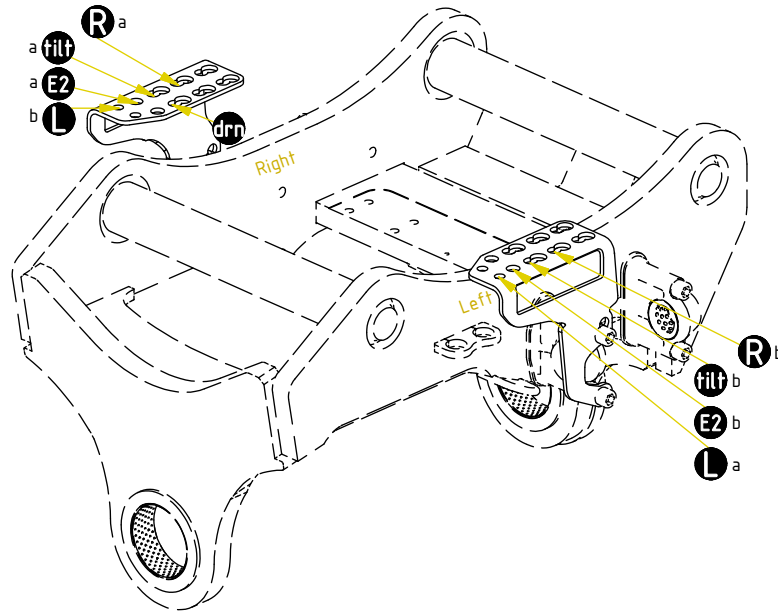
POS in order of assembly





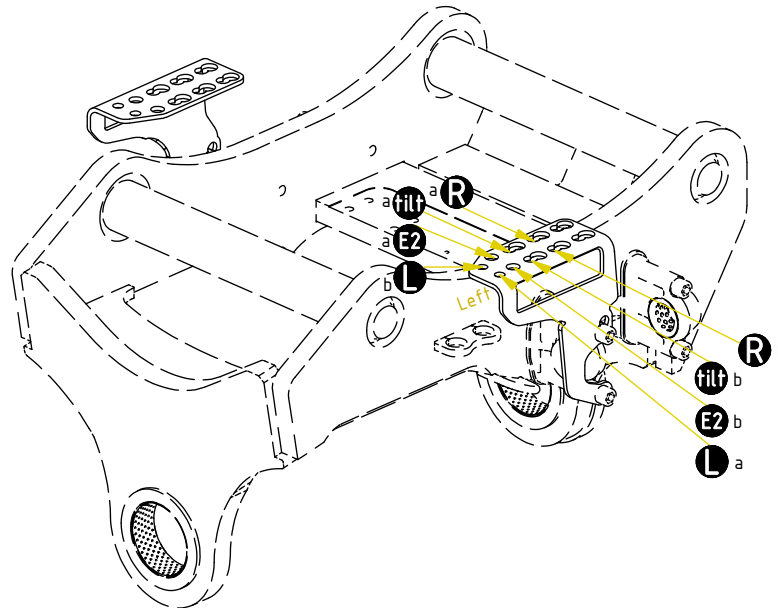
## FEED

Feed 3/4" (std)

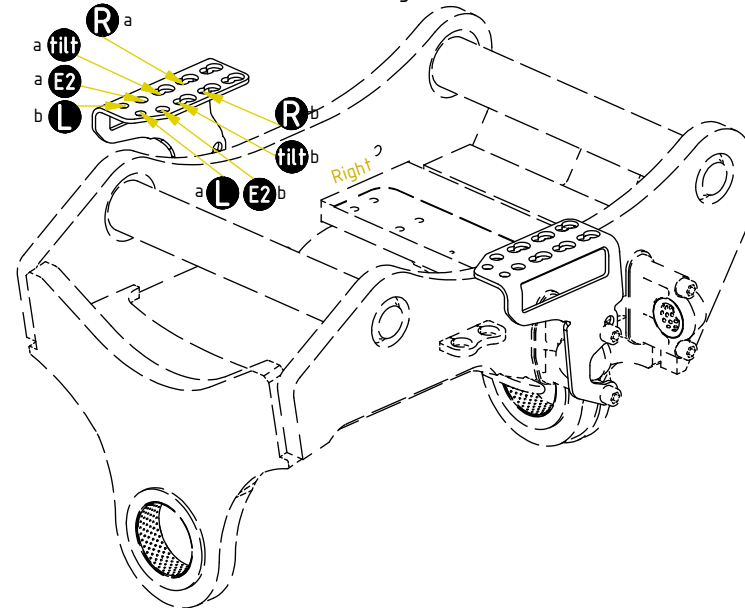


| POS | DESCRIPTION                       | PART   | QTY | COMMENTS             |
|-----|-----------------------------------|--------|-----|----------------------|
| 37  | Main Feed T&P depends on top part |        |     | See "Top part"       |
| 38  | For Functions & Feed Hoses        |        |     | See "Control system" |
| 39  | Washer NL 16mm                    | 611044 | 1   |                      |
| 40  | Adapter 1260-06-32 (3/8")         | 710242 | 2   |                      |
| 41  | Counternut 1270-06 (3/8")         | 710252 | 1   |                      |
| 42  | Washer NL 1/2"                    | 611096 | 1   |                      |
| 43  | Adapter 1260-04-04 (1/4")         | 710240 | 1   |                      |
| 44  | Counternut 1270-04 (1/4")         | 710250 | 1   |                      |

## Feed Left



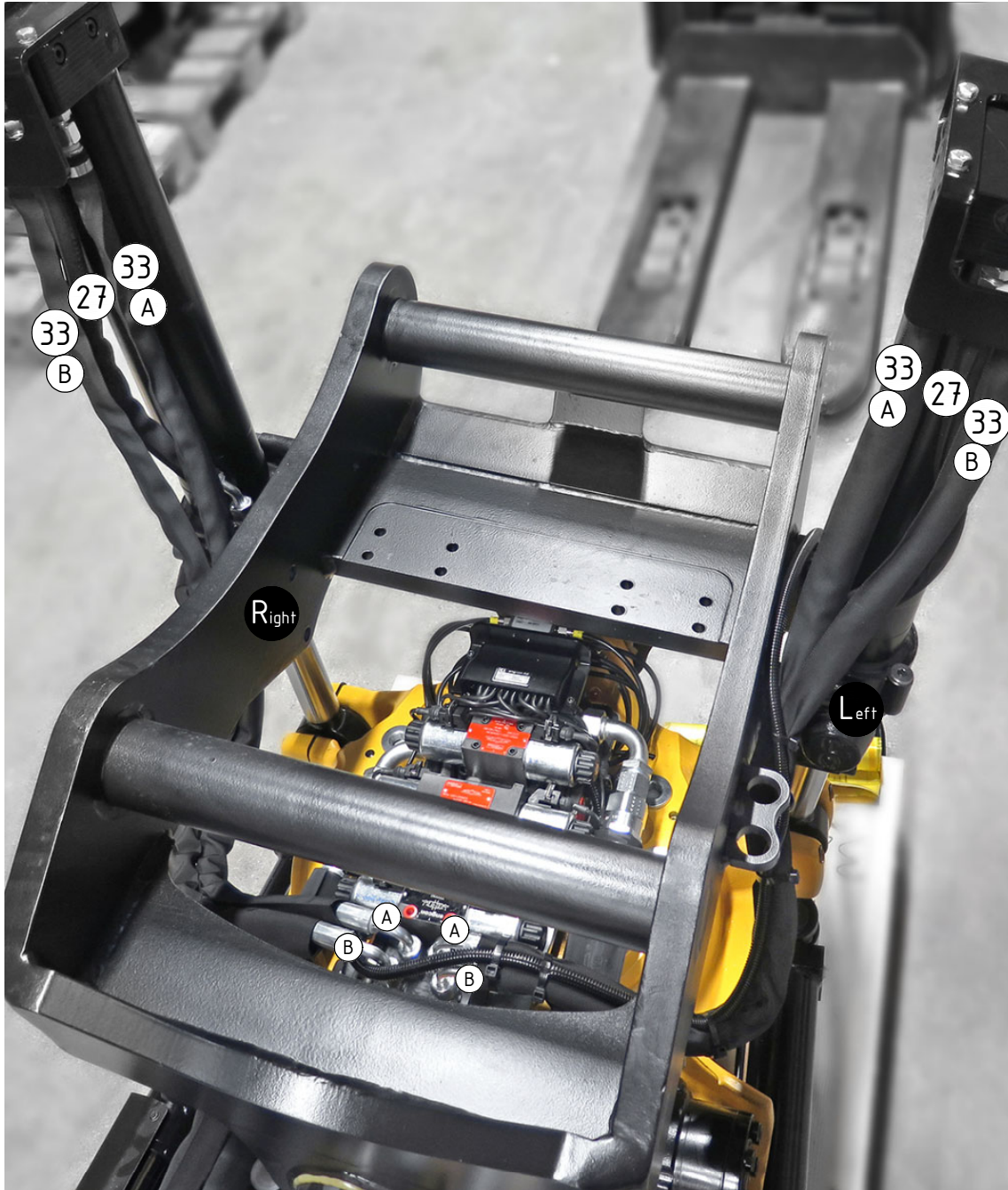
## Feed Right



## TILT

| POS | DESCRIPTION     | PART    | QTY | COMMENTS |
|-----|-----------------|---------|-----|----------|
| 27  | Hose Tilt Short | 742308  | 2   |          |
| 33  | Hose Tilt Long  | 7000031 | 4   |          |

POS in order of assembly



## FEED

Feed 3/4" (std)

| POS | DESCRIPTION                       | PART | QTY | COMMENTS             |
|-----|-----------------------------------|------|-----|----------------------|
| 37  | Main Feed T&P depends on top part |      |     | See "Top part"       |
| 38  | For Functions & Feed Hoses        |      |     | See "Control system" |

