

COVERSHEET

Planned document changes:


Briefly:


No planned changes.

Document changes:

Date:	Change:	Rev. after change:
2026-06-17	Sensor assy. and small covers updated.	G
2025-09-24	Torque added.	F
2023-09-19	Spare parts updated.	E
2021-11-10	Screws updated.	D
2021-03-09	Hook replaced. Small cover plate replaced.	C
2020-04-01	Glue for steering updated.	B
2019-10-07	Photos added.	A
2019-05-15	New document.	-

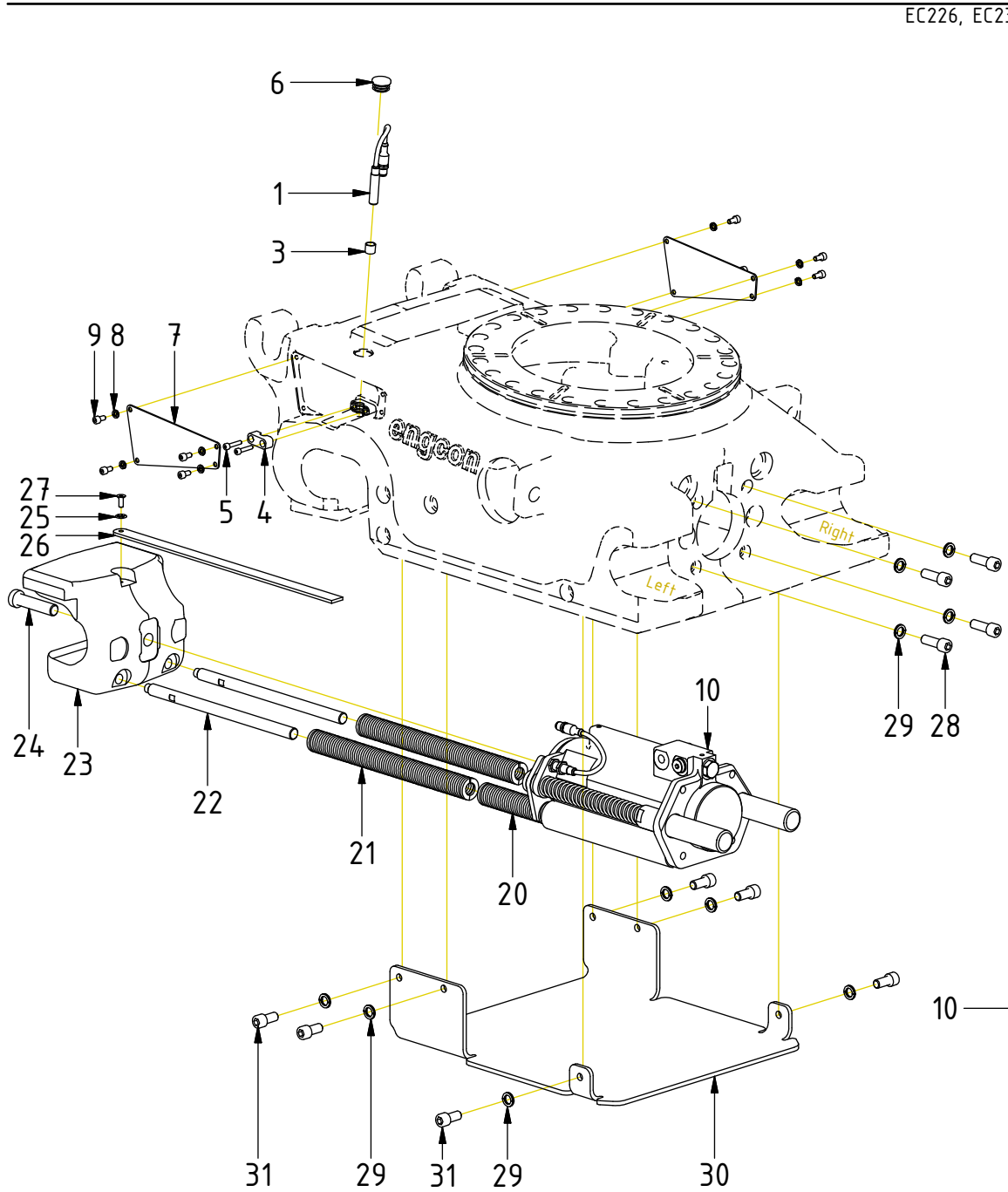
Readers note:

 Indicates instruction.

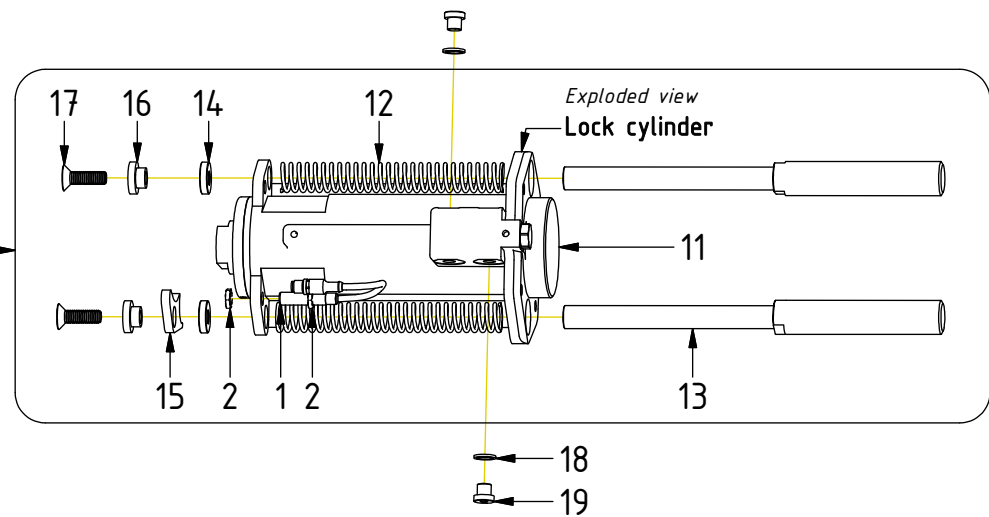
 Represents Hose.

Dashed lines for overview, mounts
on other pages/assemblies.

Std. Hitch components - QSM70



POS	DESCRIPTION	PART	QTY	COMMENTS
1	Inductive sensor QSM	1048262	2	Connect to slip ring QSM
2	Hex nut			(Incl. with sensor)
3	Protection lid, inductive sensor	8000056	1	
4	Clamp half sensor	1063793	2	
5	Screw MC6S M5x25 12.9	610402	2	
6	Plug GL26	1068462	1	
7	Small cover plate QSM70 V4	1074156	2	
8	Washer NL 6mm	611039	4	
9	Screw MC6S M6x12 12.9 ZFSHL	6000352	4	
10	Lock cyl. QSM70 V4 Comp. Forg. QSC	1058124	1	(POS.1, 11-17 incl.)
11	Lock cylinder QS70 V4 Forged	1058122	1	
12	Spring 21,8x210	1049974	2	
13	Ejector QS70	1034935	2	
14	Spacer QS70	1035752	2	
15	Sensor Plate	1035751	1	Assemble with sligth play
16	Spacer M12 L15	1008243	2	
17	Screw MF6S 12x40	610670	2	Loxeal 83-52
18	Washer GBR04 1/4	710702	2	
19	Plug 1/4"	711505	2	
20	Spring 32x152	1025178	2	
21	Spring 32x305	1025179	2	
22	Steering	1024695	2	Loxeal 83-52
23	Hook QS70 Dbl. Radius Cast	1037431	1	
24	Screw MLC6S M16x70 10.9	610720	1	Loxeal 83-52. Torque 136Nm
25	Washer Starlock 6mm	6000415	1	
26	Indicator pin QS/QSM/S 610mm	1036201	1	Cut to fit
27	Screw MF6S M6x16 10.9 untreated	610604	1	Loxeal 83-52
28	Screw MC6S M12x35 12.9 ZFSHL	6000150	4	
29	Washer NL 12mm	611042	10	QTY: 4 for EC-Oil
30	Cover plate QS70 V2	1034902	1	No cover plate for EC-Oil
31	Screw MC6S M12x25 12.9 ZFSHL	6000164	6	



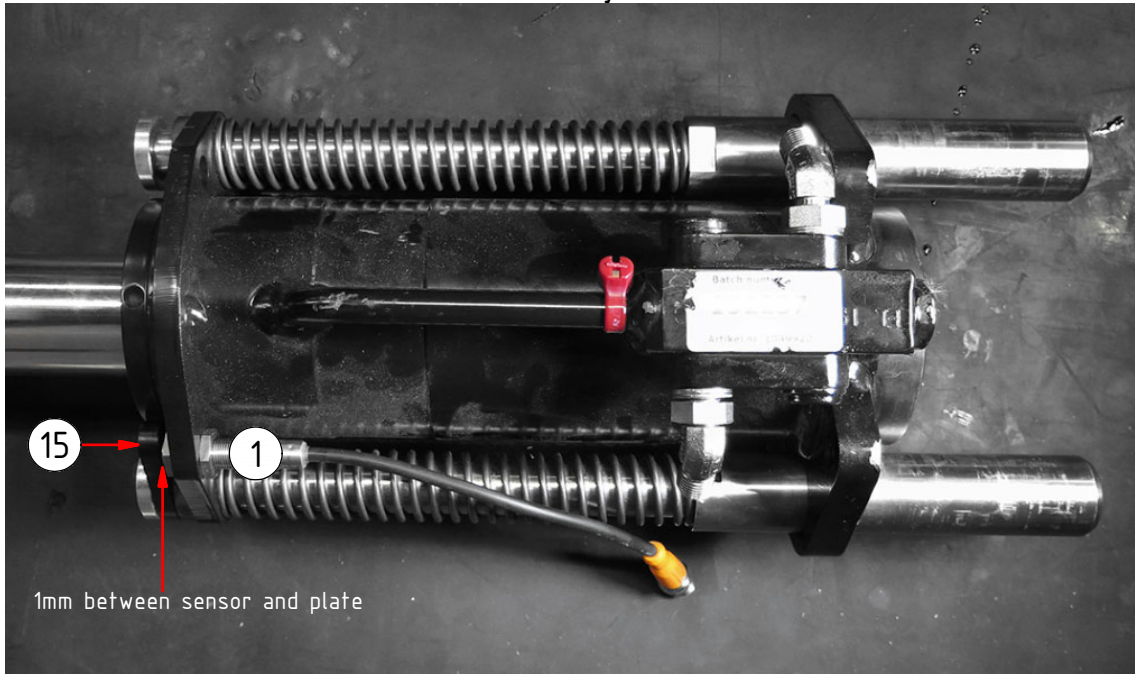
POS in order of assembly

Sensor Cylinder

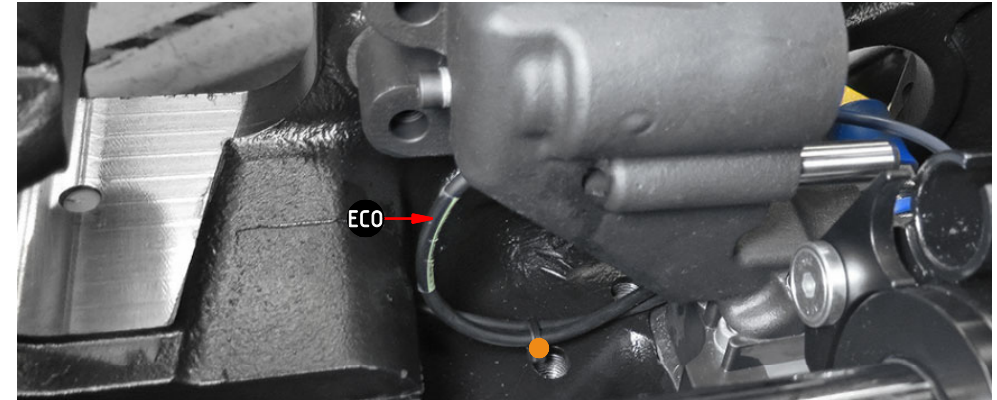
EC226, EC233

POS	DESCRIPTION	PART	QTY	COMMENTS
1	Inductive sensor QSM	1048262	2	Connect to slip ring QSM
15	Sensor Plate	1035751	1	Assemble with sligth play
32	Rubber Steel Clamp Ø12	790155	1	
33	Screw MC6S 5x16 12.9	610401	1	Loxal 55-02
●	Use cable ties			

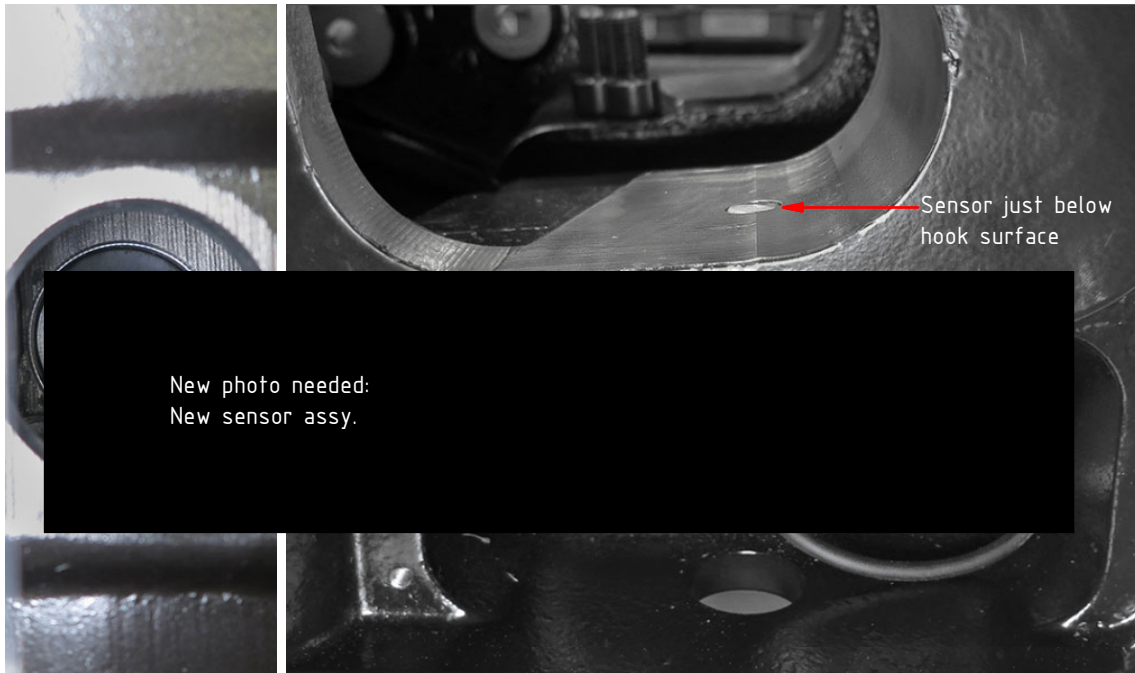
POS in order of assembly



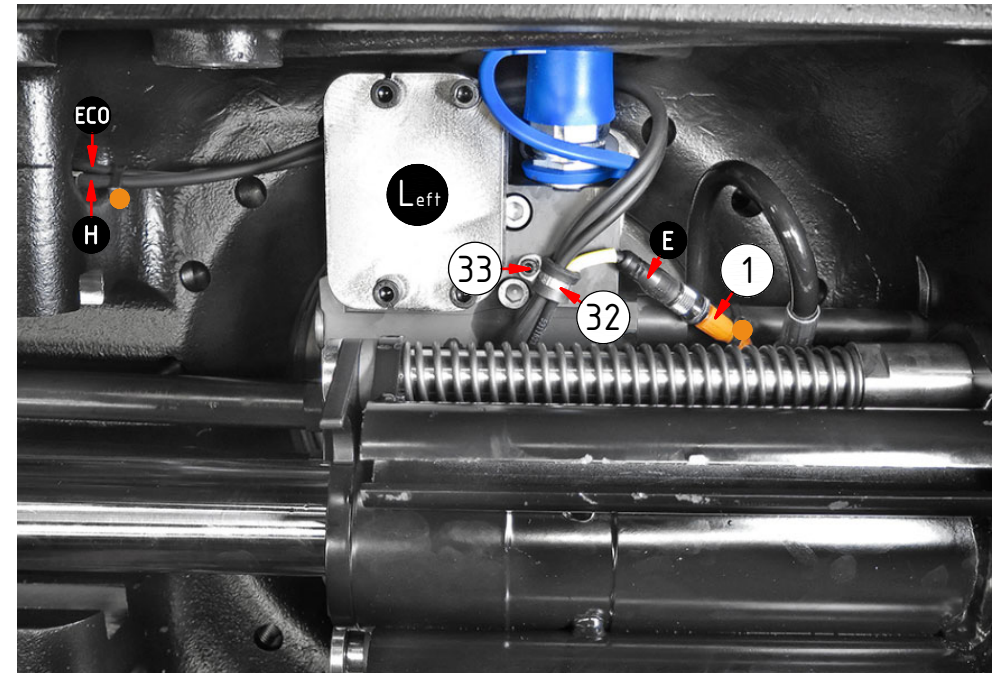
ECO Cable



Sensor Hook



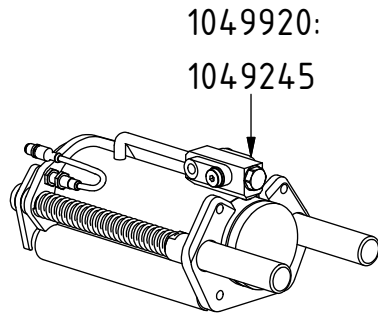
Sensor Cables



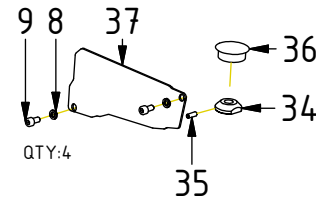
RELATED SPARE PARTS

POS	DESCRIPTION	PART	QTY	COMMENTS
6	Plug GL26	1068462	1	
7	Small cover plate QSM70 V4	1074156	2	
8	Washer NL 6mm	611039	4	
9	Screw MC6S M6x12 12.9 ZFSHL	6000352	4	
10	Lock cyl. QSM70 V4 Comp. Forg. QSC	1058124	1	(POS.1, 11-17 incl.)
11	Lock cylinder QS70 V4 Forged	1058122	1	
23	Hook QS70 Dbl. Radius Cast	1037431	1	
34	Position nut, inductive sensor	1029432	1	
35	Set Screw M8x16	610808	1	
36	Cover plug QS/ECO	8000068	1	Replaced by POS.6
37	Small cover plate QSM70 V3	1061519	2	Replaced by POS.7
38	Small cover plate QSM70	1048078	1	

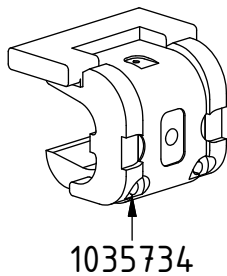
Replaced by current version from 2023-06



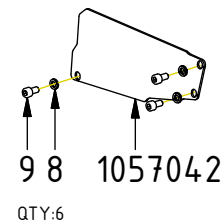
Replaced on EC226 from 2026-04
 Replaced on EC233 from 2026-06



Replaced by POS.23
 from 2020-09



Replaced by POS.37
 from 2021-02



Replaced by 1057042
 from 2020-06

