

## COVERSHEET

Planned document changes:

Breifly:

No planned changes.

Document changes:

Date:

Change:

2020-09-30

New instruction.

Rev.

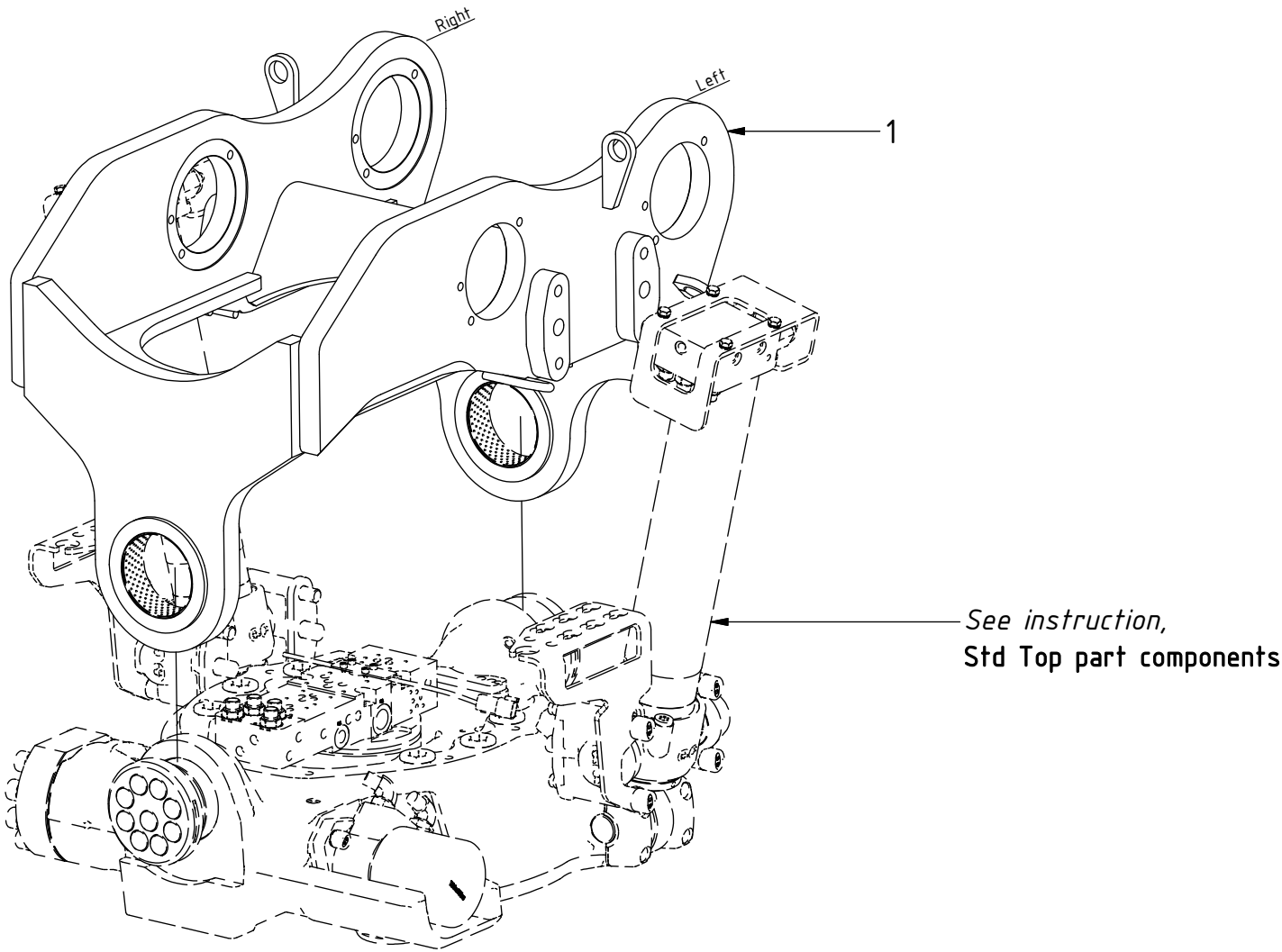
after change:

-

# EC226 QSM - UNI Top part

POS	DESCRIPTION	PART	QTY	COMMENTS
1	Top part UNI is selected via engcon		1	

POS in order of assembly



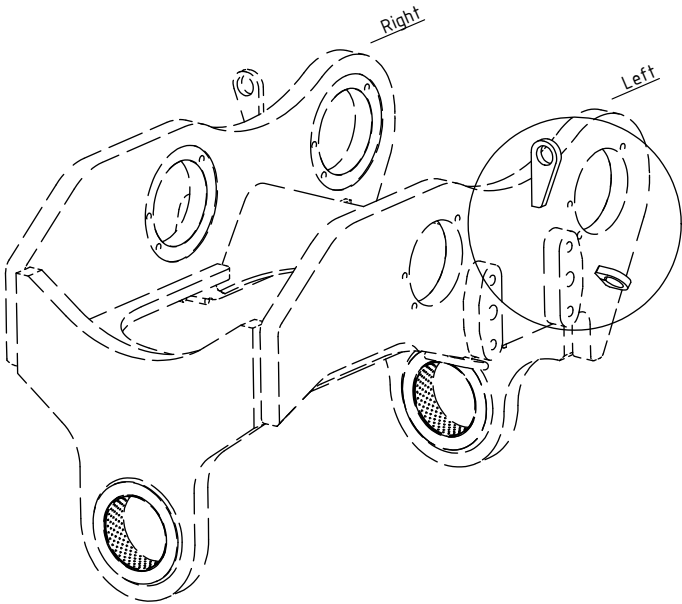
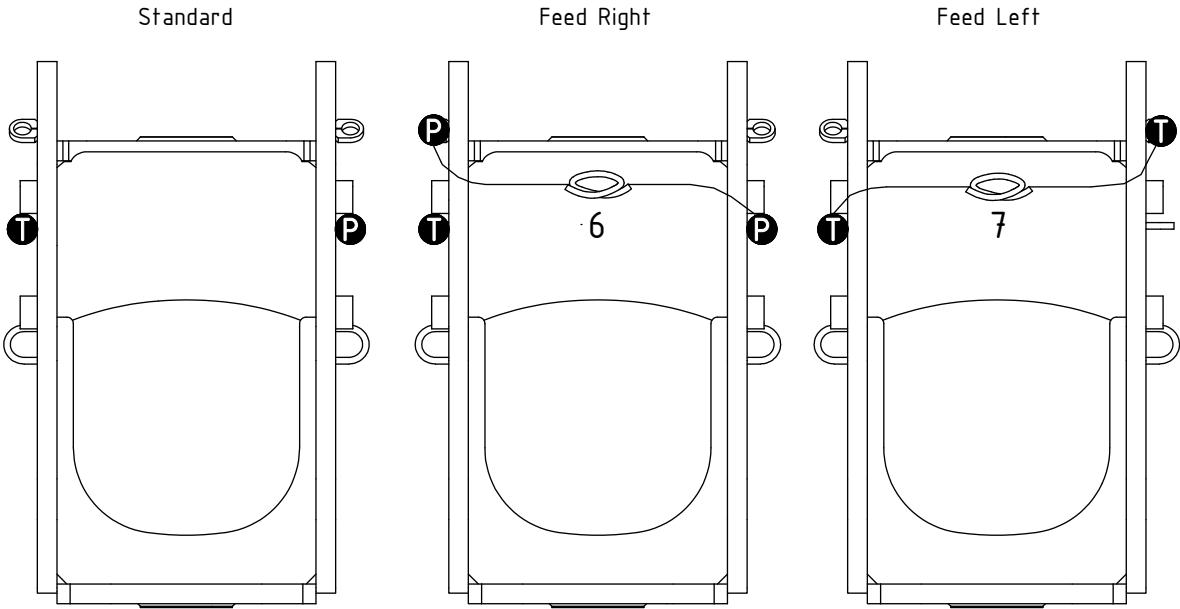
# EC226 QSM - UNI Top part

**P** = 2  
**T** = 2

FEED  
3/4" (Std)

Main Feed

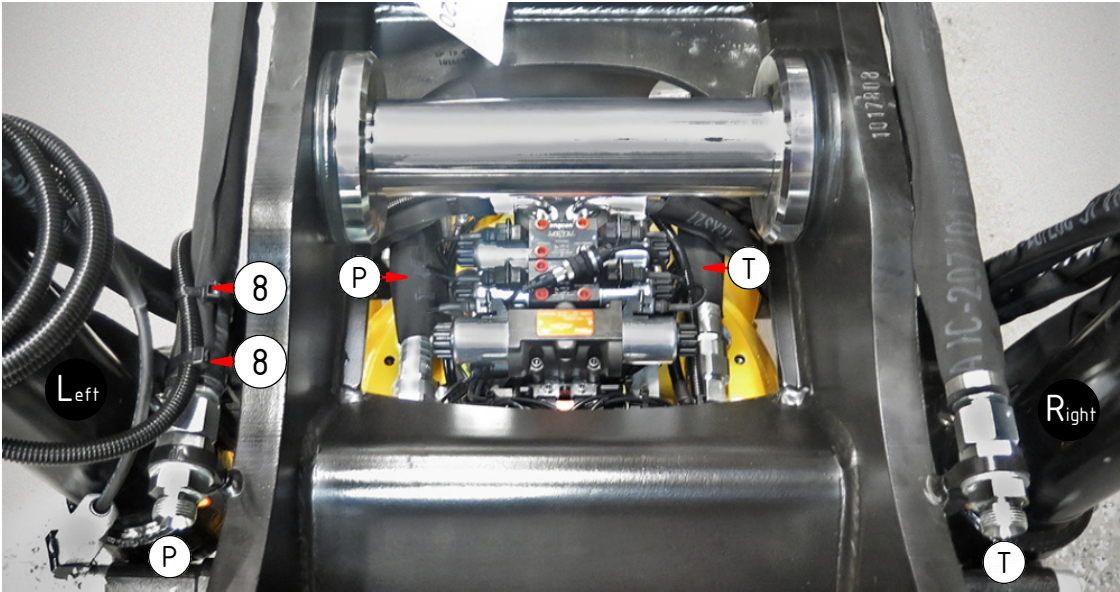
POS	DESCRIPTION	PART	QTY	COMMENTS
2	Use washer, adapter, nut: POS.3, 4, 5			QTY depends on config. (2-3)
3	Washer NL 1"	611095	2	
4	Adapter 1260-12-12 (3/4")	712210	2	
5	Counternut 1270-12 (3/4")	712211	2	
6	Hose Bridge Feed Right	7000048	1	
7	Hose Bridge Feed Left	7000049	1	
	Attach feed hoses from control system			(a & b represents channels on feed block)



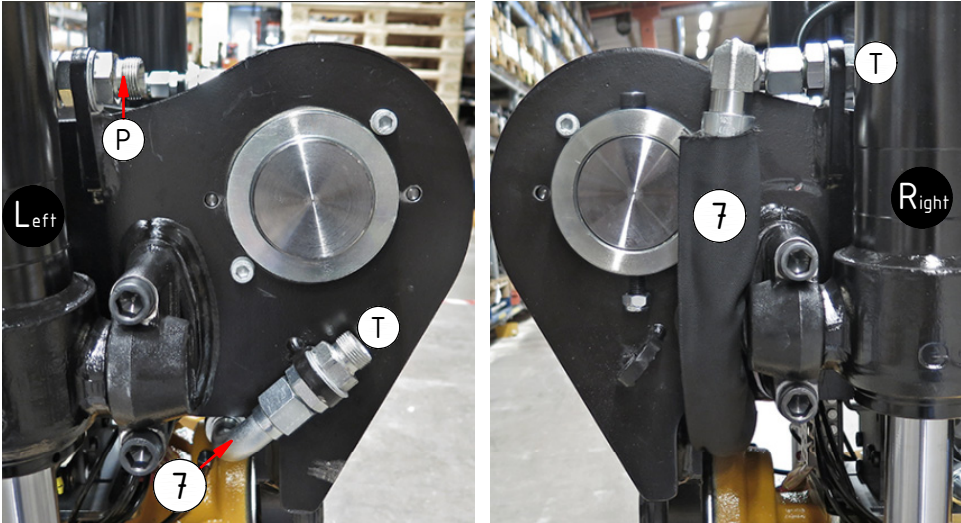
FEED  
3/4" (Std)

POS	DESCRIPTION	PART	QTY	COMMENTS
6	Hose Bridge Feed Right	7000048	1	
7	Hose Bridge Feed Left	7000049	1	
8	Cable tie 7,8x360	1021587	1	
	Attach feed hoses from control system			(a & b represents channels on feed block)

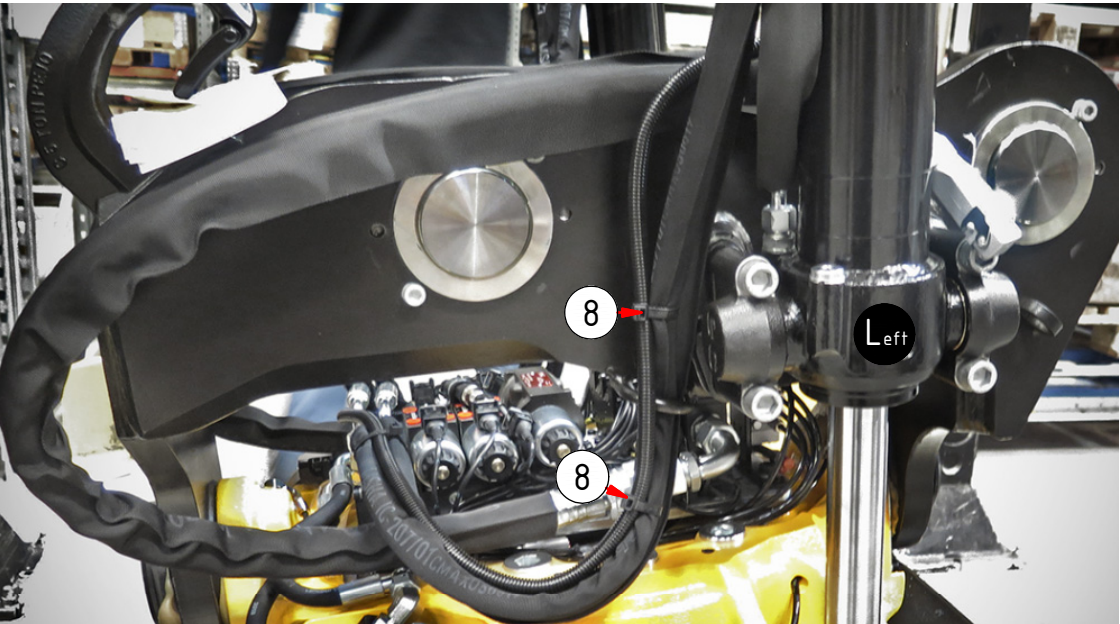
POS in order of assembly



Feed Left:



Feed Right:



Photo(s) needed: option Feed Right