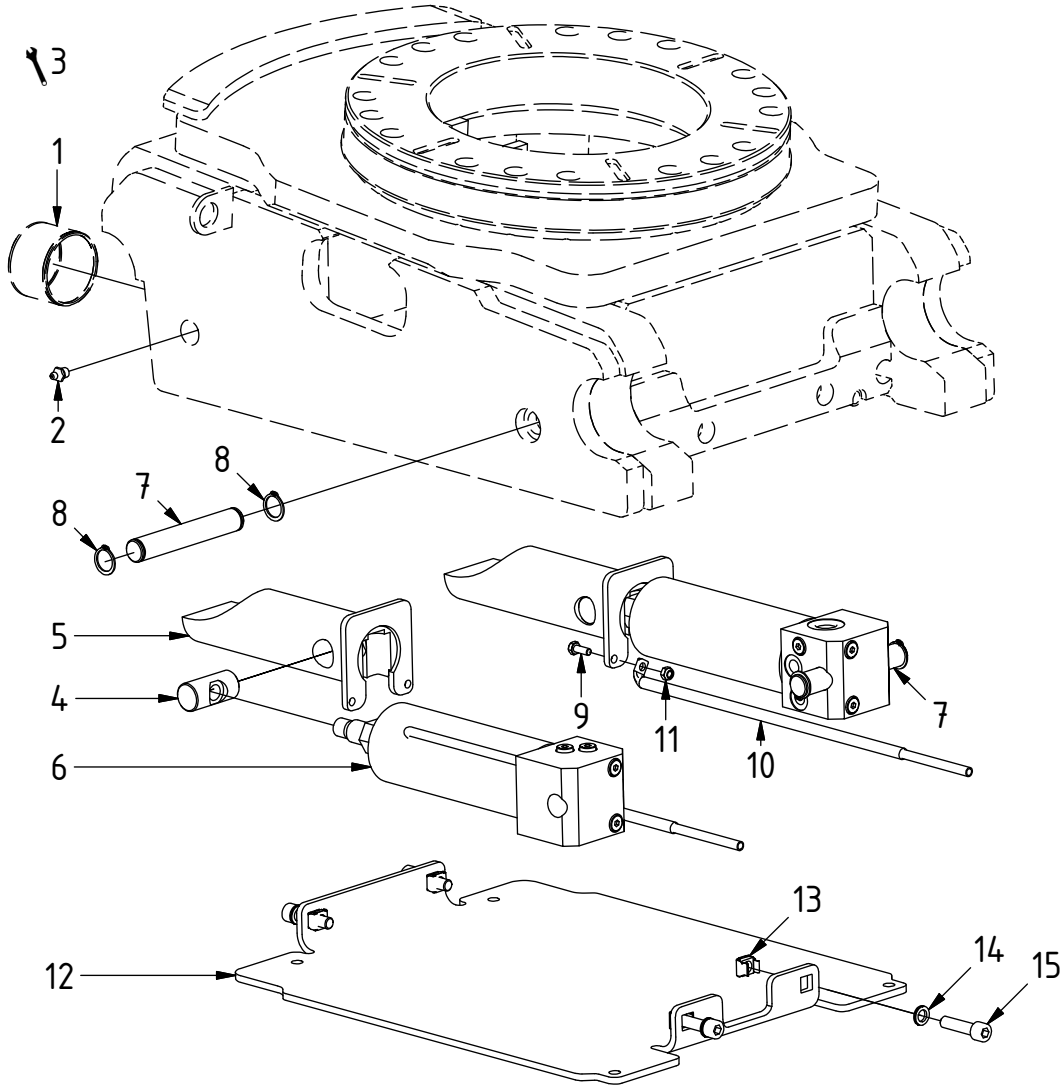
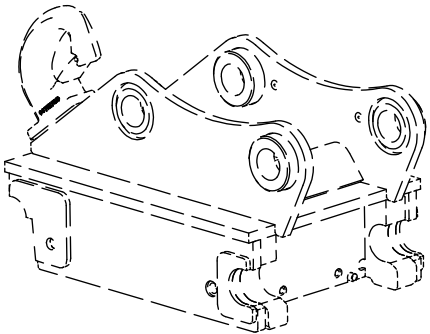
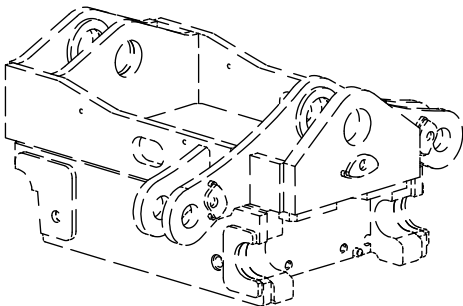


# S70 - Std components

EC226, EC30, RFS70, TFS70, EC20



POS	DESCRIPTION	PART	QTY	COMMENTS
1	Bushing WB802 60/65X45	630310	4	
2	Lubrication nipple 1/8" straight	711403	2	
3	Make sure bushings are free from debris. Grease bushings generously.			
4	Lock pin	402894	2	
5	Lockwedge	201206	2	
6	Lock cylinder S70	1014515	2	Loctite to POS.4
7	Lock axle	400923	2	
8	Circlips	640201	4	
9	Hex Head Screw 6x16	610109	2	
10	Indicator pin	400911	2	
11	Hex lock Nut M6	610921	2	
12	Coverplate v.4	1003069	1	
13	Cage nut M10 C	610957	4	
14	Washer NL10	611041	4	
15	Socket Head Screw 10x40	610453	4	



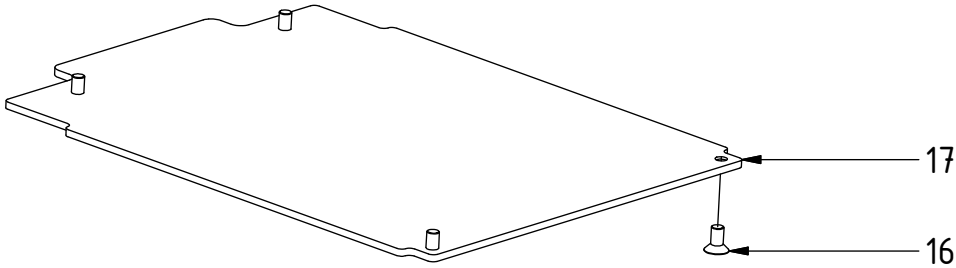
Dashed lines for overview, mounts on other pages/assemblies. indicates instruction. represents hose.

# S70 - Std components

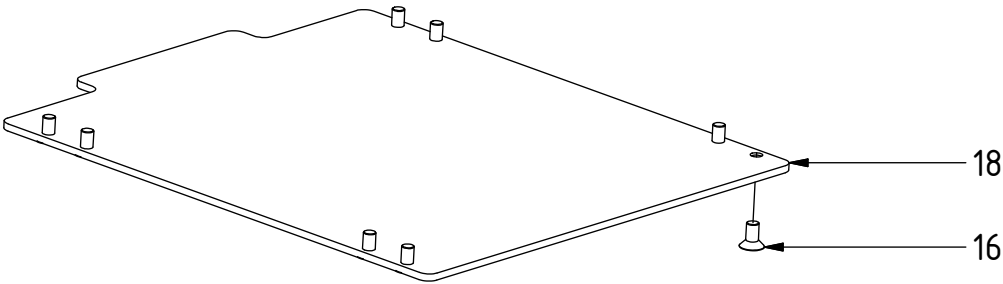
Related spare parts:

POS	DESCRIPTION	PART	QTY	COMMENTS
12	Coverplate v.4	1003069	1	
16	Flat head socket screw 10x20	610633	4	QTY:8 for v.2
17	Coverplate v.3	1000618	1	Replaced by POS.12 from 2008-05
18	Coverplate v.2	201205	1	Replaced by POS.17 from 2007-04
19	Coverplate v.1	200430	1	Replaced by POS.18 from 2004-03

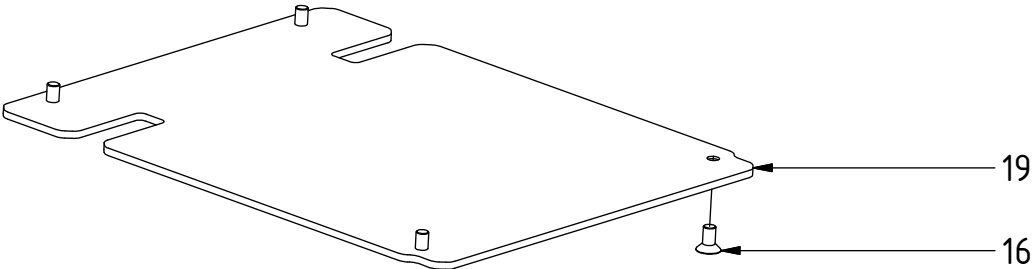
Replaced from 2008-05





Replaced from 2007-04



Replaced from 2004-03



Dashed lines for overview, mounts on other pages/assemblies.  indicates instruction.  represents hose.

POS in order of assembly