

EC233 - UNI Top part

COVERSHEET

Planned document changes:

Briefly:

No planned changes.

Document changes:

Date:

2018-07-11

Change:

New instruction.

Rev.

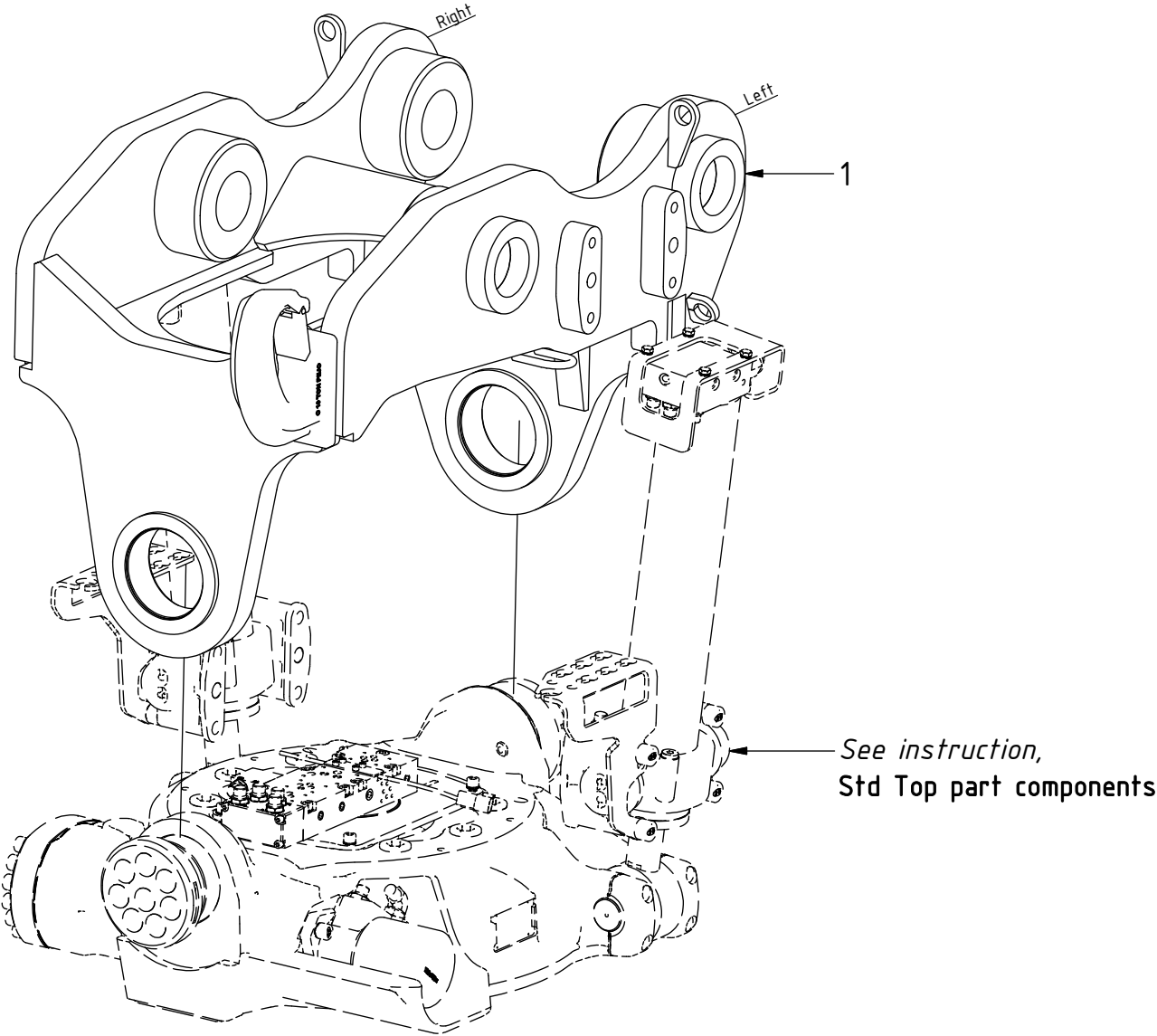
after change:

-

EC233 - UNI Top part

POS	DESCRIPTION	PART	QTY	COMMENTS
1	Top part Uni is selected via engcon			

POS in order of assembly



$\mathbb{P} = 2$

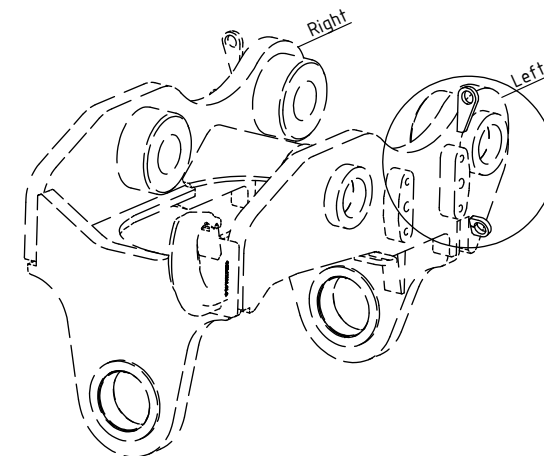
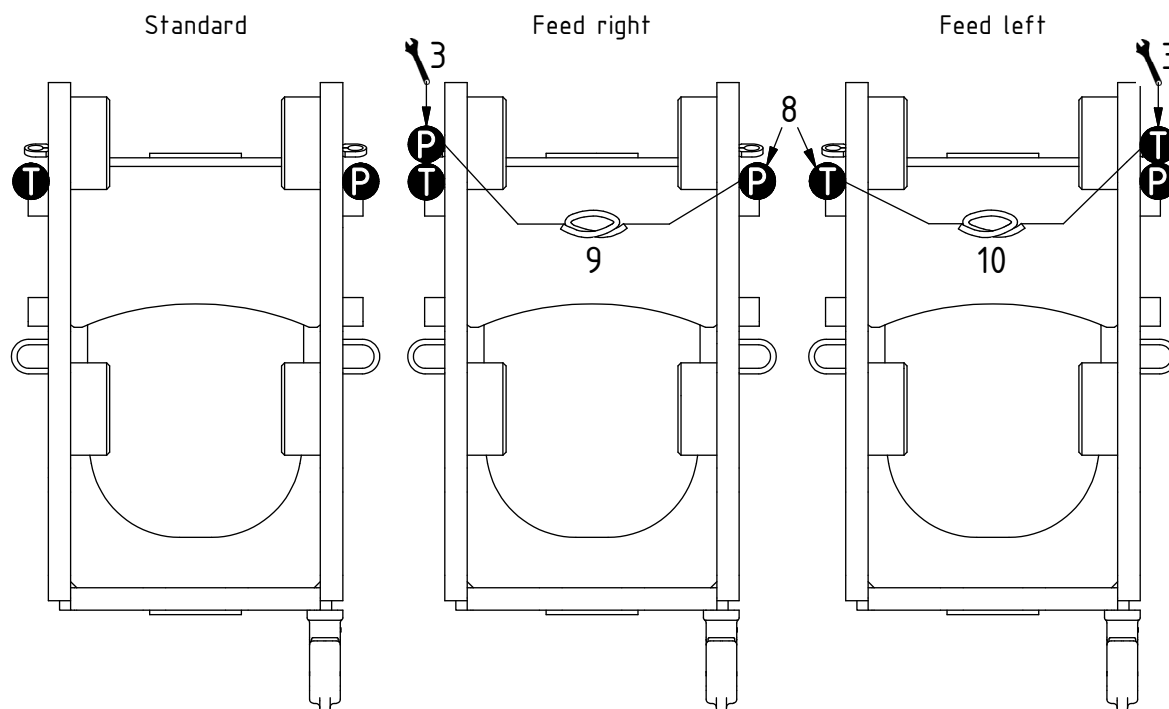
$$\textcircled{T} = 2$$

FEED:

3/4" (Std)

Main feed

POS	DESCRIPTION	PART	QTY	COMMENTS
2	Use washer, adapter, nut according to POS.4, 5, 7			
3	Use washer, adapter, nut according to POS.4, 6, 7			Applies only to Feed left/Feed right
4	Washer NL 1"	611095	2	QTY:3 for Feed left/Feed right
5	Adapter 1260-12-12 (3/4")	712210	2	
6	Adapter 1260-12-57 (3/4")	712227	1	
7	Bulkhead adapter nut 3/4"	712211	2	QTY.3 for Feed left/Feed right
8	Adapter 407-12-12 90° (3/4")	7000010	1	Applies only to Feed left/Feed right
9	Hose bridge Feed right	7000691	1	
10	Hose bridge Feed left	7000664	1	
11	Attach feed hoses from control system			

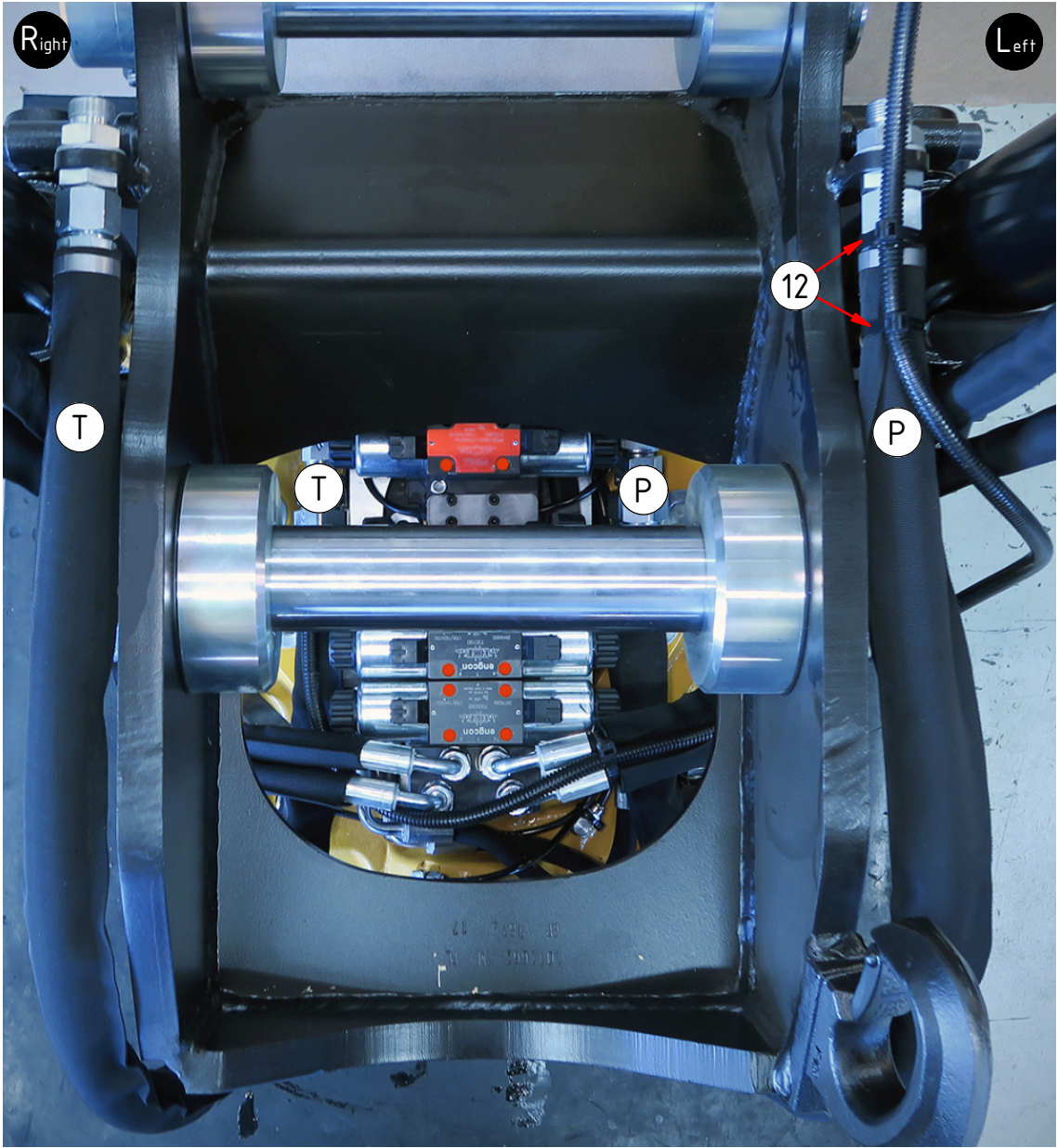
[illegible]

EC233 - UNI Top part

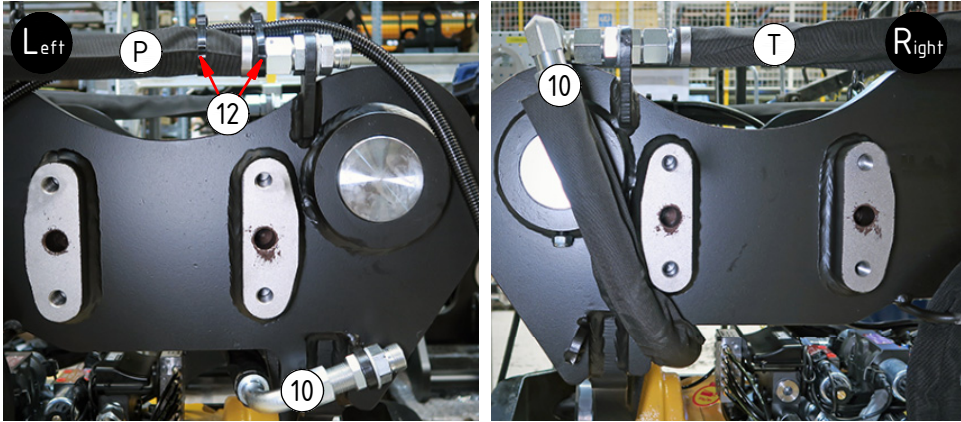
FEED:
3/4" (Std)

POS	DESCRIPTION	PART	QTY	COMMENTS
9	Hose bridge Feed right	7000691	1	
10	Hose bridge Feed left	7000664	1	
11	Attach feed hoses from control system			
12	Cable tie 7,8x360	1021587	2	

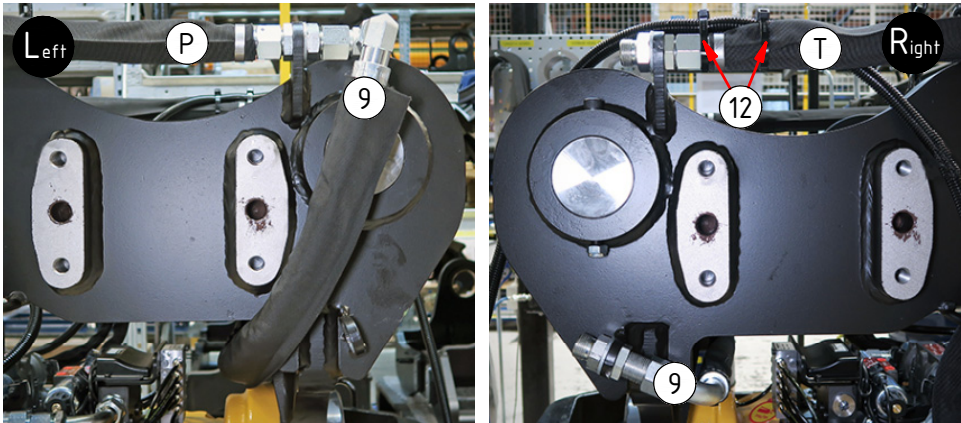
POS in order of assembly



Feed Left:



Feed Right:



Dashed lines for overview, mounts on other pages/assemblies. indicates instruction. represents hose.