

EC233 - S1 Top part

COVERSHEET

Planned document changes:

Briefly:

No planned changes.

Document changes:

Date:

2019-03-11

Change:

New instruction.

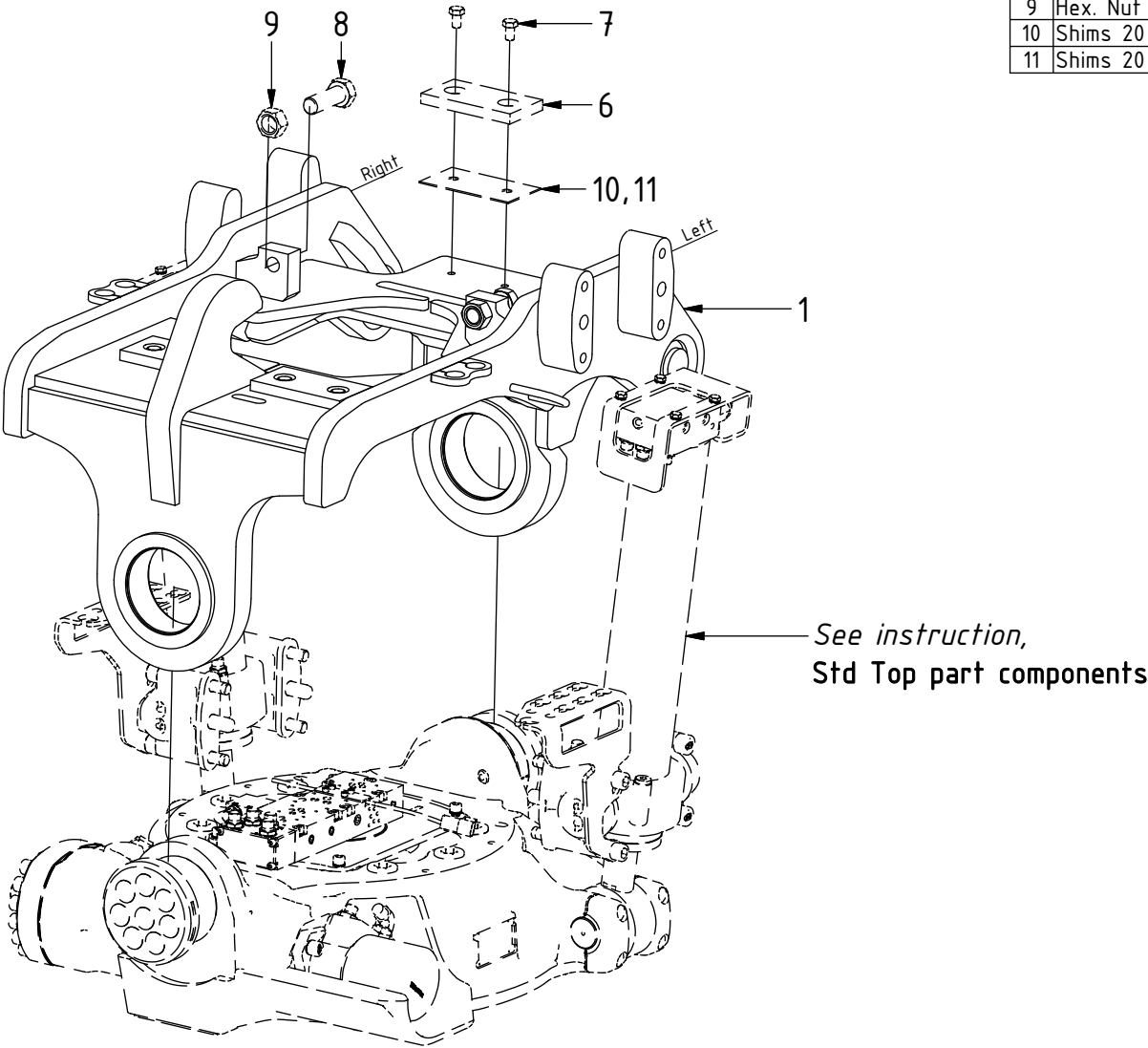
Rev.

after change:

-

EC233 - S1 Top part

POS	DESCRIPTION	PART	QTY	COMMENTS
1	Top part S1	1043624	1	
6	Shims S1 & S2	400069	3	(Included in Top part)
7	M6S M12x20	610163	6	(Included in Top part)
8	M6S M24x70	610260	2	(Included in Top part)
9	Hex. Nut M24	610913	2	(Included in Top part)
10	Shims 20 1mm	404512		Use if required (Spare part only)
11	Shims 20 2mm	404513		Use if required (Spare part only)



EC233 - S1 Top part

P = 2
T = 2

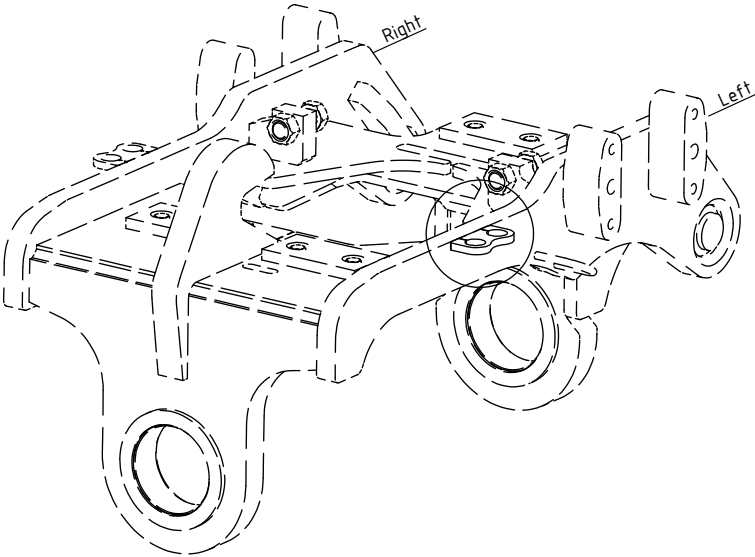
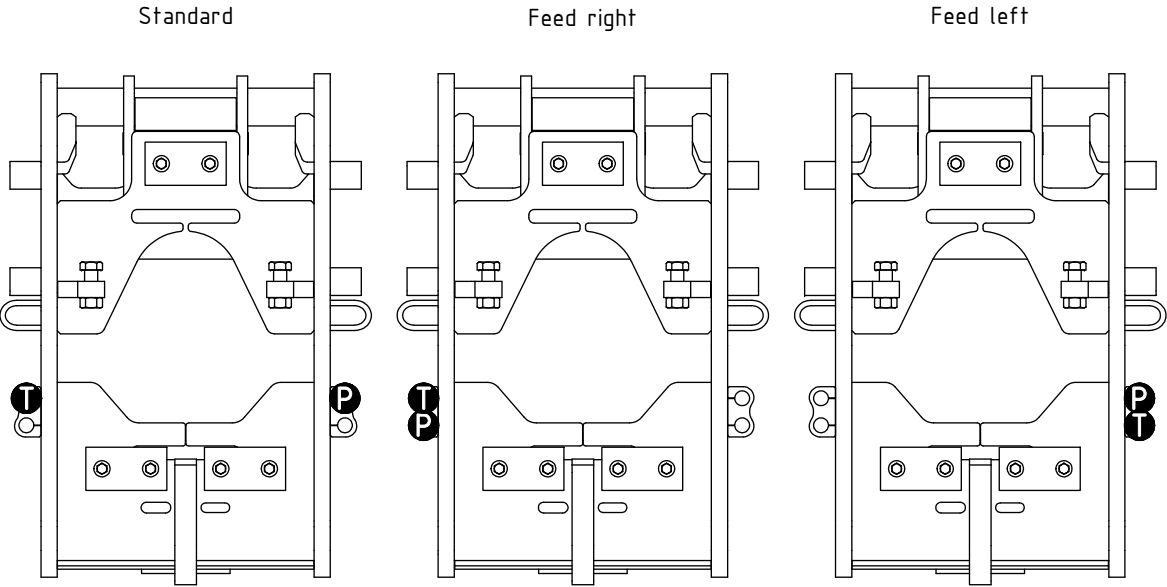
FEED:

3/4" (Std)

P/T

POS	DESCRIPTION	PART	QTY	COMMENTS
2	Use washer, adapter, nut according to POS.3, 4, 5			
3	Washer NL 1"	611095	2	
4	Adapter 1260-12-57 (3/4")	712227	2	
5	Counternut 1270-12 (3/4")	712211	2	
12	Attach feed hoses from control system			(a & b represents channels on feed block)

POS in order of assembly



EC233 - S1 Top part

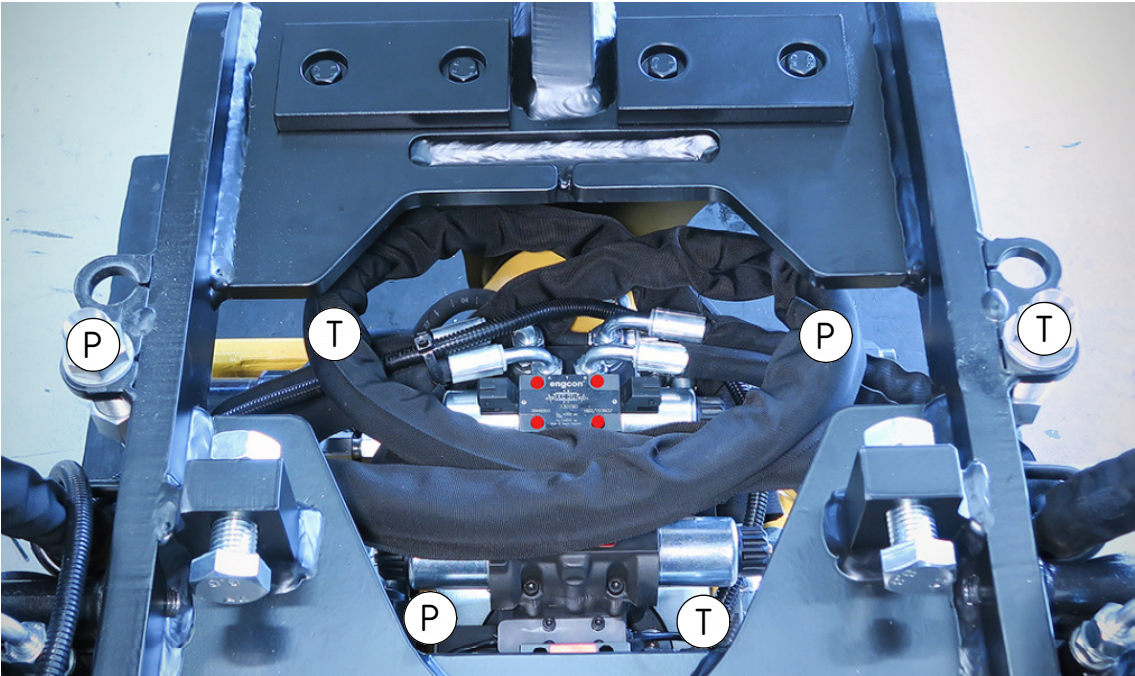
FEED:

3/4" (Std)

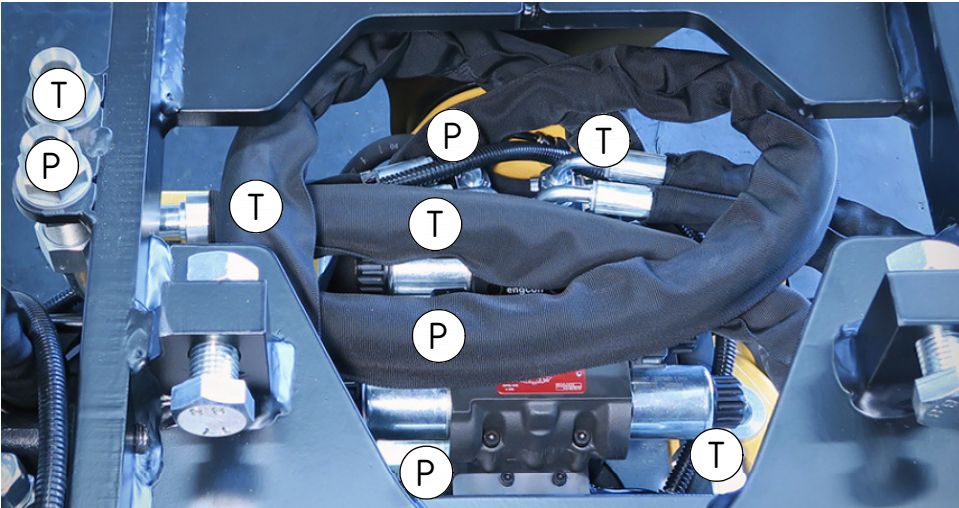
POS	DESCRIPTION	PART	QTY	COMMENTS
12	Attach feed hoses from control system			(a & b represents channels on feed block)

POS in order of assembly

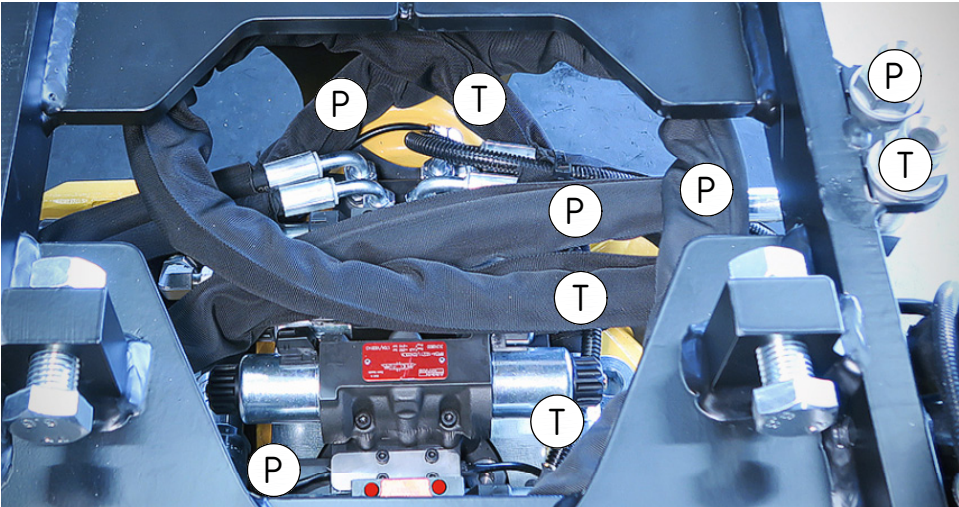
Standard



Feed Left



Feed Right



Dashed lines for overview, mounts on other pages/assemblies. \ indicates instruction. represents hose.