

COVERSHEET

Planned document changes:

Briefly:


2026-06-25. Screws for yokes (9 & 23) will be replaced by 6000253 (16x110) & 6000152 (16x140).


2026-03-09. POS.8 will be divided to two parts: 1080806 with 1080807. (Backwards compatible).

Document changes:

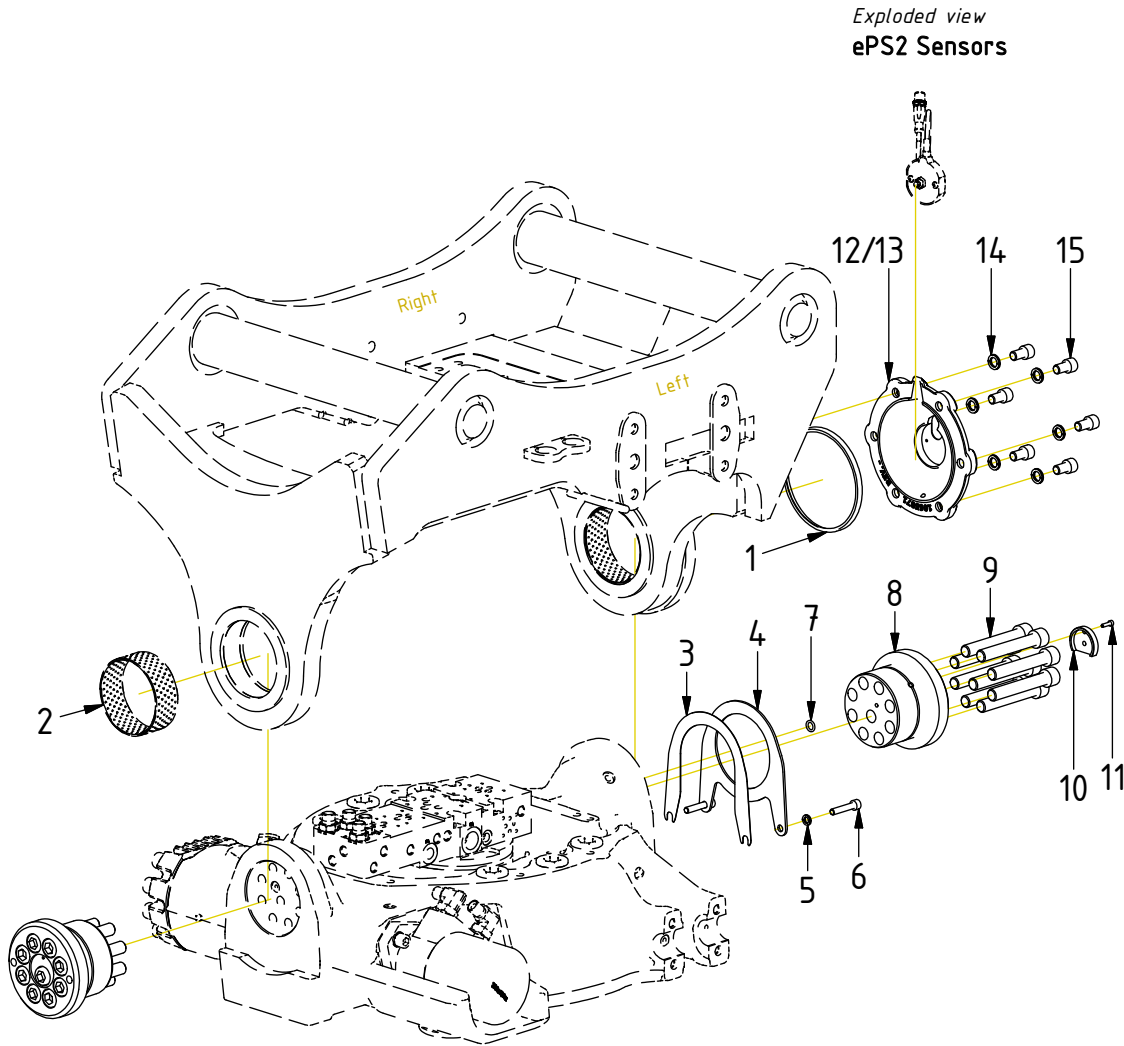
<u>Date:</u>	<u>Change:</u>	<u>Rev. after change:</u>
2026-05-27	ss0 updated.	G
2026-02-02	Tilt cylinder corrected.	F
2023-10-31	Photos added.	E
2022-09-07	Seal for top part clarified.	D
2022-05-12	Details for EC226S added. (EC226 with ePS sensors).	C
2021-12-22	Photos added.	B
2020-10-13	Screw lengths corrected.	A
2020-04-15	New document.	-

Readers note:

 Indicates instruction.

 Represents Hose.

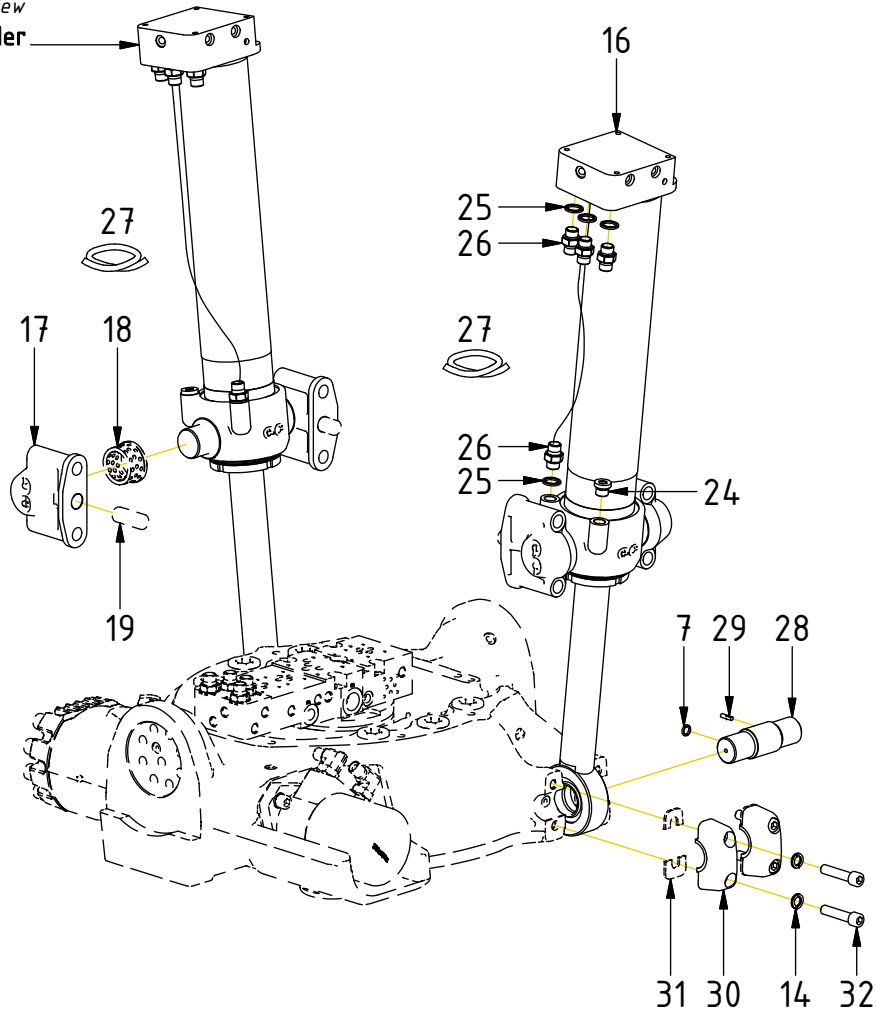
Dashed lines for overview, mounts
on other pages/assemblies.



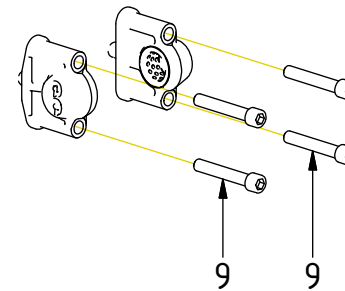
POS	DESCRIPTION	PART	QTY	COMMENTS
1	Seal PAK-130x140x7-L	1064208	1	Face groove toward top part
2	Bushing WB802 100/105 L40	630320	2	(Incl. in Top part)
3	Shim tilt axle	1011244	1	Use as required
4	Tilt axial washer	1011238	1	
5	Washer NL 8mm	611040	10	
6	Screw MC6S M8x40 12.9 ZFSHL	6000145	2	
7	O-ring 9,92x2,62	710968	4	
8	Tilt axle EC226	1064205	2	
9	Screw MC6S M16x100 12.9 ZFSHL	6000156	26	QTY: 22 for ss0, ss9 Torque: 333Nm
10	Magnet spacer tilt axle	1064185	1	For EC226S
11	Screw MC6S M4x14 8,8 FZB	610420	1	For EC226S
12	Cover tiltaxle EC226 Cast	1065871	1	For EC226S
13	Protection plate tilt axle EC226	1064718	1	For EC226/EC226PS Face the groove downwards
14	Washer NL 12mm	611042	16	
15	Screw MC6S M12x20 12.9 ZFSHL	6000356	6	

POS	DESCRIPTION	PART	QTY	COMMENTS
7	O-ring 9,92x2,62	710968	4	
9	Screw MC6S M16x100 12.9 ZFSLH	6000156	26	QTY: 22 for ss0, ss9 Torque: 333Nm
16	Tilt cylinder EC226	1072285	2	
17	Yoke EC226 complete	1017151	4	(POS.18-19 incl.)
18	Bushing 40/50/55/5-30	631001	4	
19	Cylindrical pin \varnothing 20x50	650211	4	
20	Spacer 20mm	1023777	4	
21	Hose terminal Left V2	1047137	1	
22	Hose terminal Right V2	1047138	1	
23	Screw MC6S M16x130 12.9 ZFSLH	6000154	4	Torque: 333Nm
24	Plug 70125-06 (3/8")	711504	2	
25	Washer GBR06 3/8	710703	8	
26	Adapter 136-06-06 (3/8")	710106	8	
27	Hose Tilt Short	742308	2	
28	Cylinder axle \varnothing 40	1016398	2	
29	Slotted pin 5x20	640413	2	
30	Clamping half 35 Complete	1016393	4	(POS.31 incl.)
31	Rubber spacer clamping half	1016439	4	
32	Screw MC6S M12x55 12.9 ZFSLH	6000155	8	Torque: 136Nm

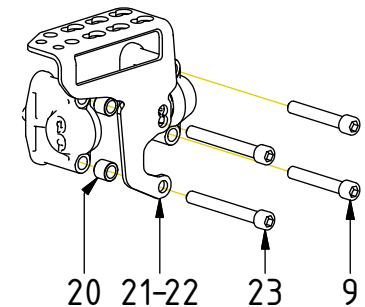
Exploded view
Tilt cylinder



Std fasteners



ss0, ss9

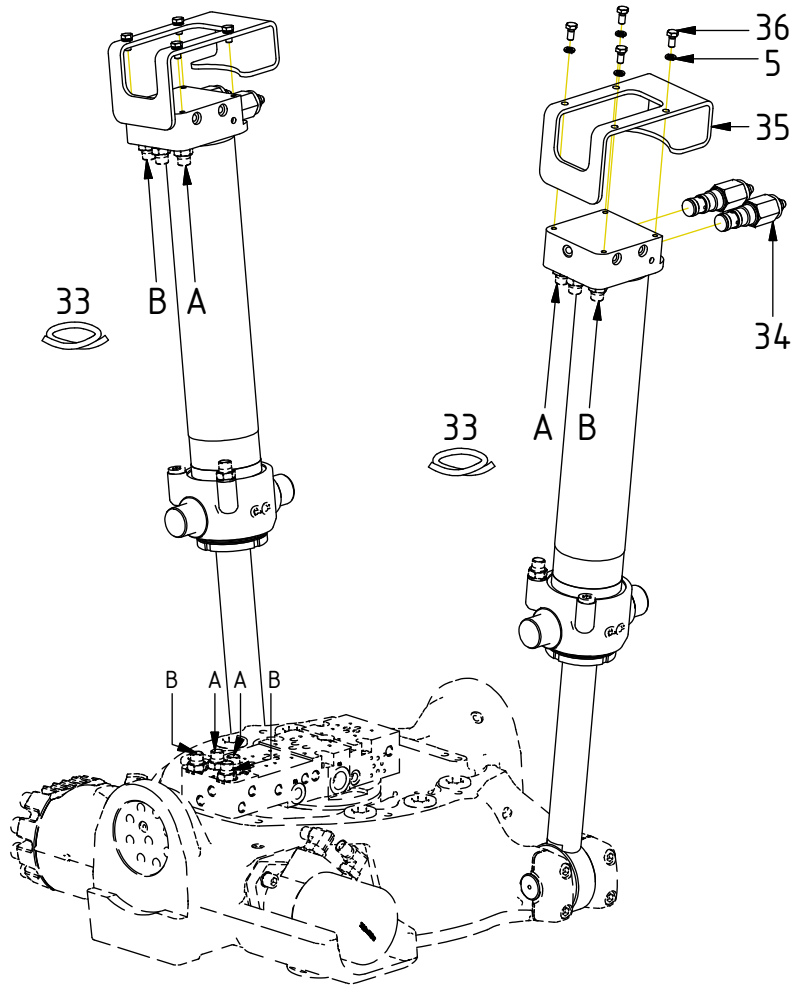


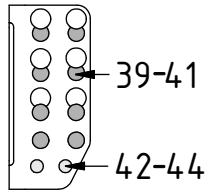
POS in order of assembly

TILT

POS	DESCRIPTION	PART	QTY	COMMENTS
5	Washer NL 8mm	611040	10	
33	Hose Tilt Long	7000031	4	
34	Overcentre valve 4:1	730277	Torque: 60Nm	
35	Hose protection Tiltcylinder	1014280	2	
36	Screw M6S M8x16 8,8 FZB	610122	8	

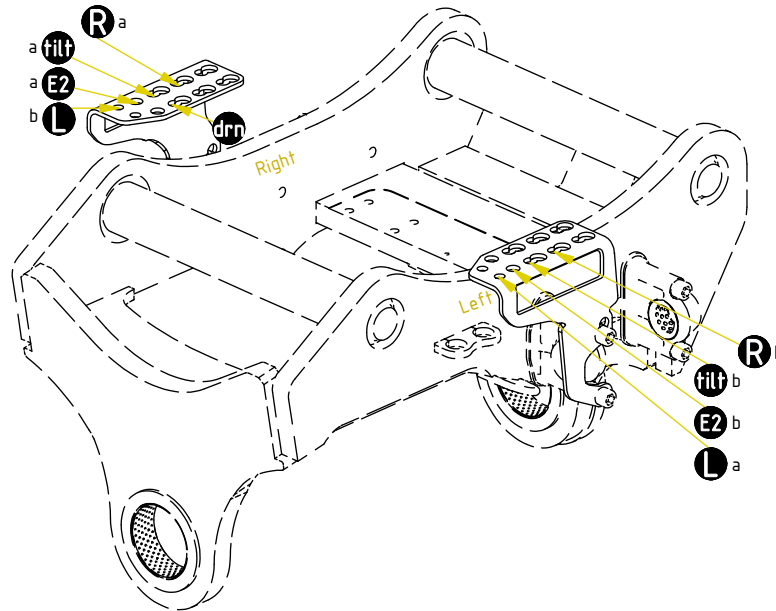
POS in order of assembly



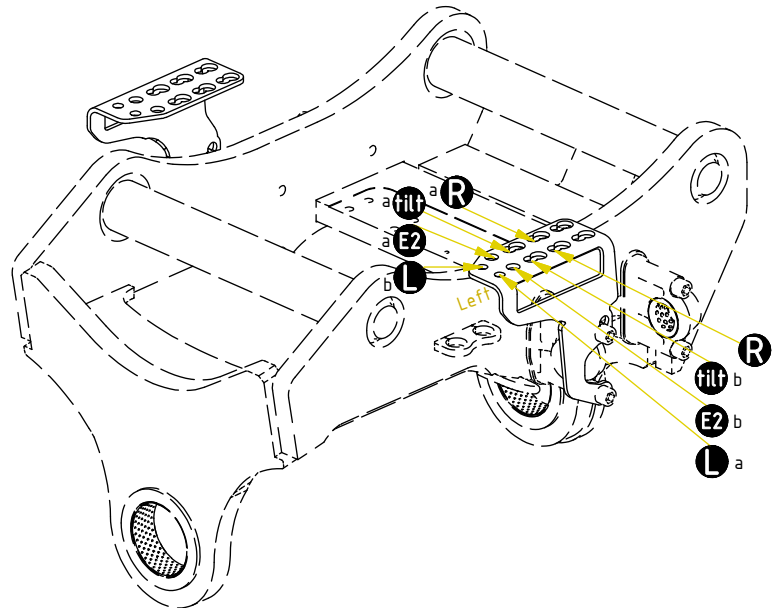


FEED

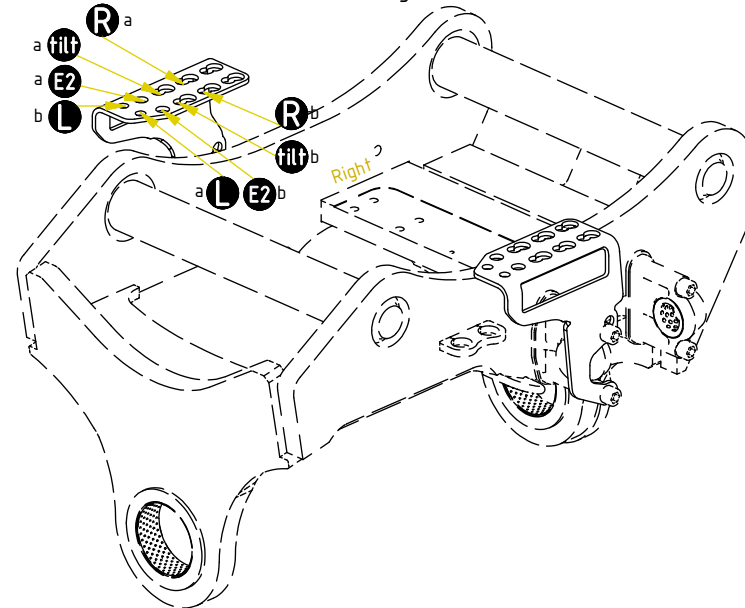
Feed 3/4" (std)



Feed Left



Feed Right



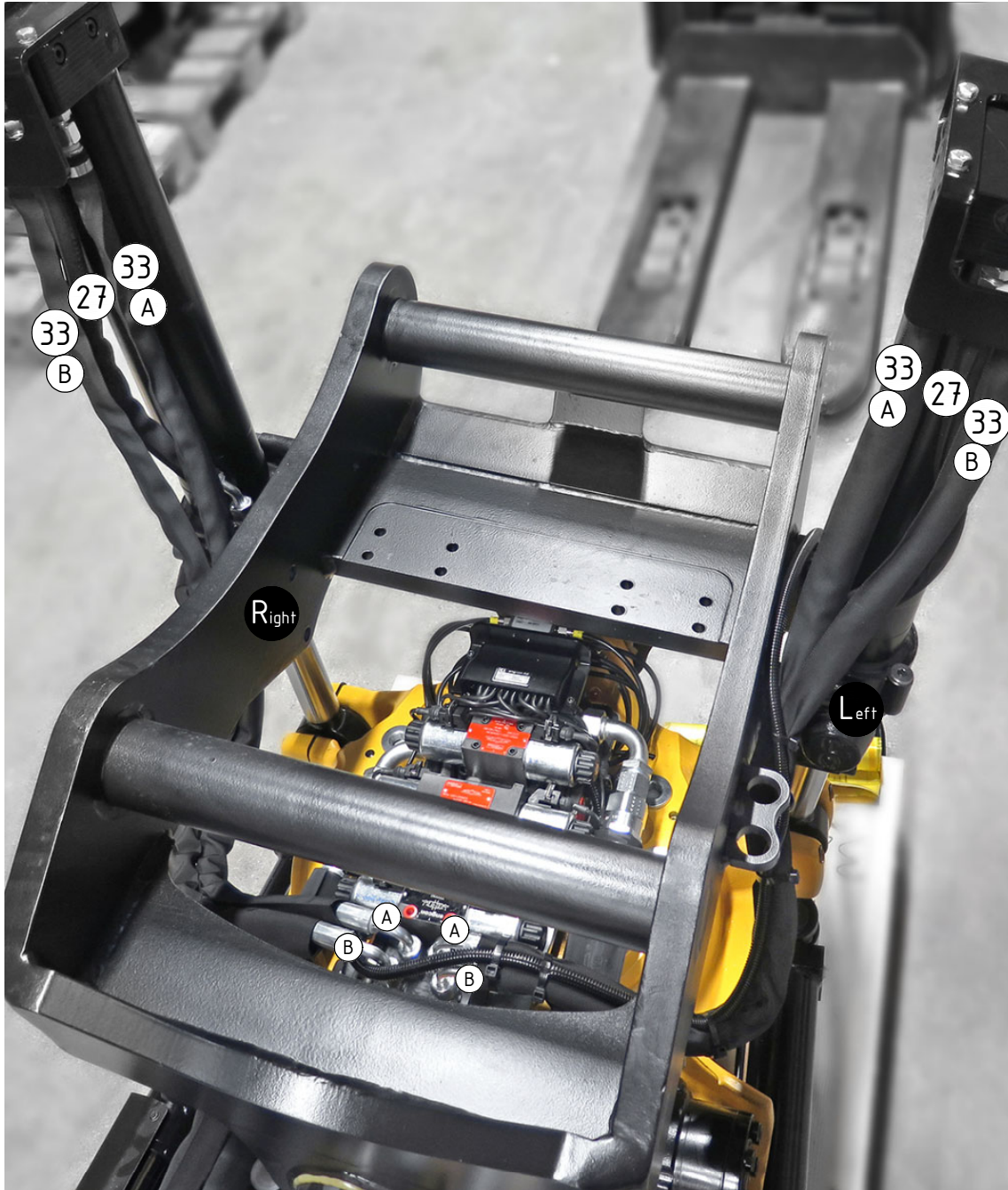
POS	DESCRIPTION	PART	QTY	COMMENTS
37	Main Feed T&P depends on top part			See "Top part"
38	For Functions & Feed Hoses			See "Control system"
39	Washer NL 16mm	611044	1	
40	Adapter 1260-06-32 (3/8")	710242	2	
41	Counternut 1270-06 (3/8")	710252	1	
42	Washer NL 1/2"	611096	1	
43	Adapter 1260-04-04 (1/4")	710240	1	
44	Counternut 1270-04 (1/4")	710250	1	

POS in order of assembly

TILT

POS	DESCRIPTION	PART	QTY	COMMENTS
27	Hose Tilt Short	742308	2	
33	Hose Tilt Long	7000031	4	

POS in order of assembly



FEED

Feed 3/4" (std)

POS	DESCRIPTION	PART	QTY	COMMENTS
37	Main Feed T&P depends on top part			See "Top part"
38	For Functions & Feed Hoses			See "Control system"

