

Planned document changes:

Briefly:

No planned changes.

Document changes:

Date:	Change:	Rev. after change:
2023-06-01	Layout/irrelevant.	H
2023-01-13	Placement of single and double arms corrected.	G
2022-06-27	Part no corrected.	F
2019-04-23	Spare parts page added. Coversheet added.	E

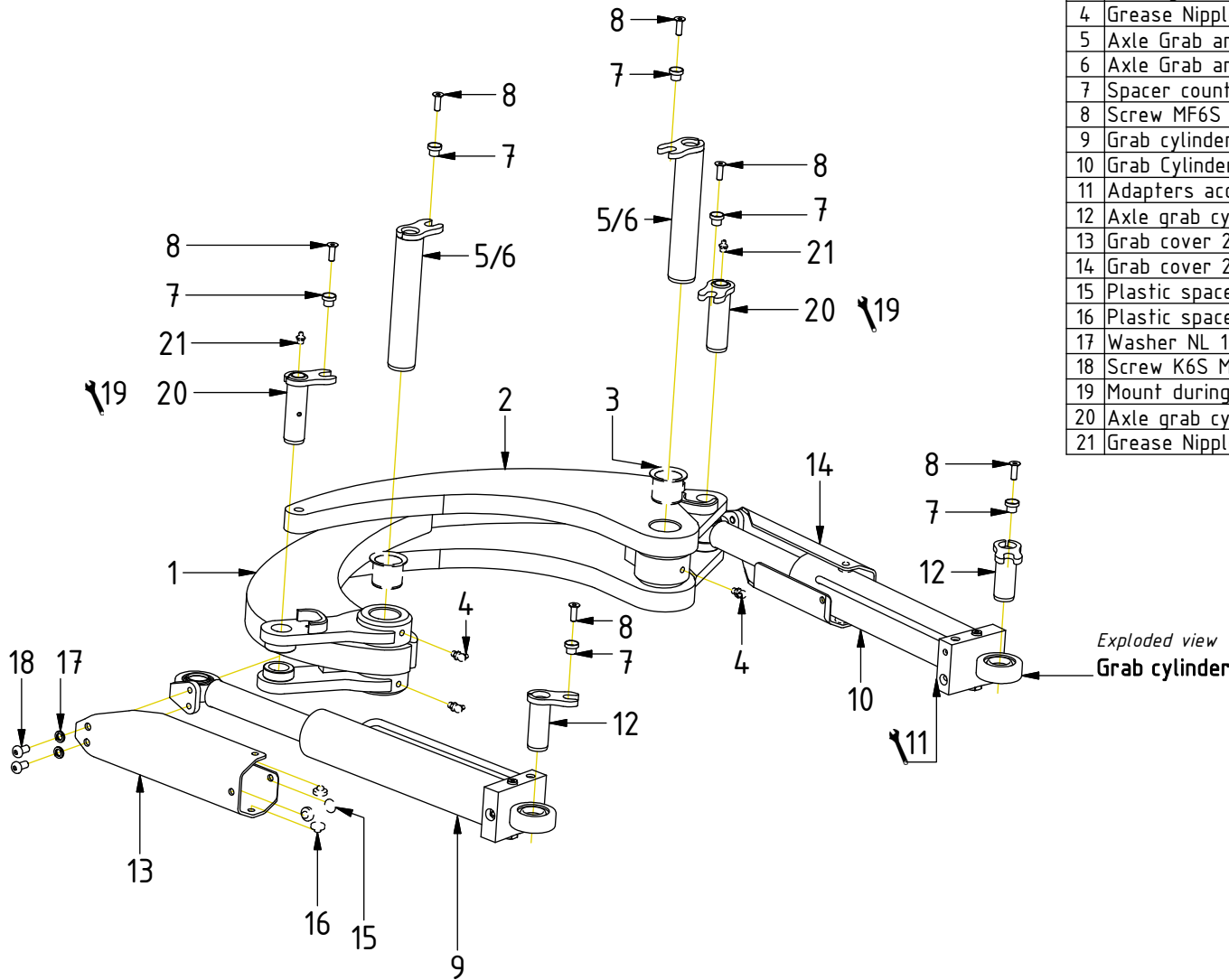
Readers note:

Indicates instruction.



Represents Hose.

Dashed lines for overview, mounts
on other pages/assemblies.



POS	DESCRIPTION	PART	QTY	COMMENTS
1	Grab arm (Single) Complete	303330K	1	(POS.3-4 incl.)
2	Grab arm (Double) Complete	303345K	1	(POS.3-4 incl.)
3	Bushing 40/44/55x40	630404	4	
4	Grease Nipple	711409	3	
5	Axle Grab arm (163mm)	400520	2	
6	Axle Grab arm (211mm)	1039995	2	For QS80
7	Spacer countersink	400659	6	
8	Screw MF6S M8x25 10.9 FZB	610608	6	Loxal 83-52
9	Grab cylinder L Complete	301931K	1	
10	Grab Cylinder R Complete	301469K	1	
11	Adapters according to Quick hitch			See "Quick hitch"
12	Axle grab cyl. (against quick hitch)	400522	2	
13	Grab cover 20 complete L v.2	1008181K	1	(POS.15-16 incl.)
14	Grab cover 20 complete R v.2	1008190K	1	(POS.15-16 incl.)
15	Plastic spacer 1,2mm	400635	2	
16	Plastic spacer 5mm	400636	6	
17	Washer NL 10mm	611041	4	
18	Screw K6S M10x20 10.9 FZB	611812	4	
19	Mount during quick hitch assembly			
20	Axle grab cyl. (against grab arm)	400524	2	(POS.21 incl.)
21	Grease Nipple	711403	2	

Exploded view
Grab cylinder

SPARE PARTS

POS	DESCRIPTION	PART	QTY	COMMENTS
7	Spacer countersink	400659	6	
8	Screw MF6S M8x25 10.9 FZB	610608	6	Loxal 83-52
22	Grab support GR30	1000957	1	For hitches with bolted support
23	Axle grab support GR30	400521	2	For hitches with bolted support

POS in order of assembly

