

COVERSHEET

Planned document changes:

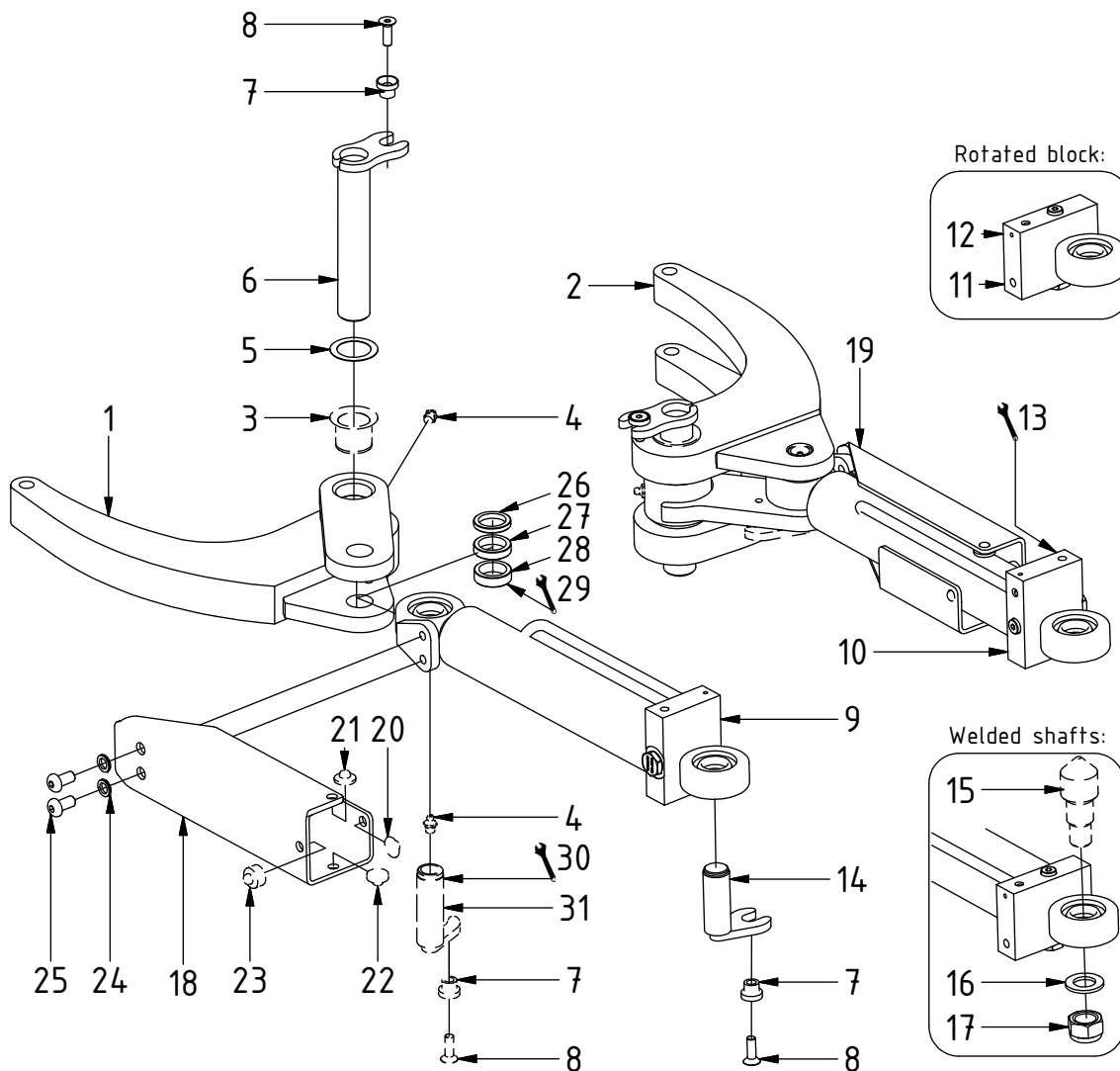
Briefly:

No planned changes.

Document changes:

Date:	Change:	Rev. after change:
2021-04-21	Spare parts page updated.	N
2019-04-18	Coversheet added.	M

Grab adapter GR10

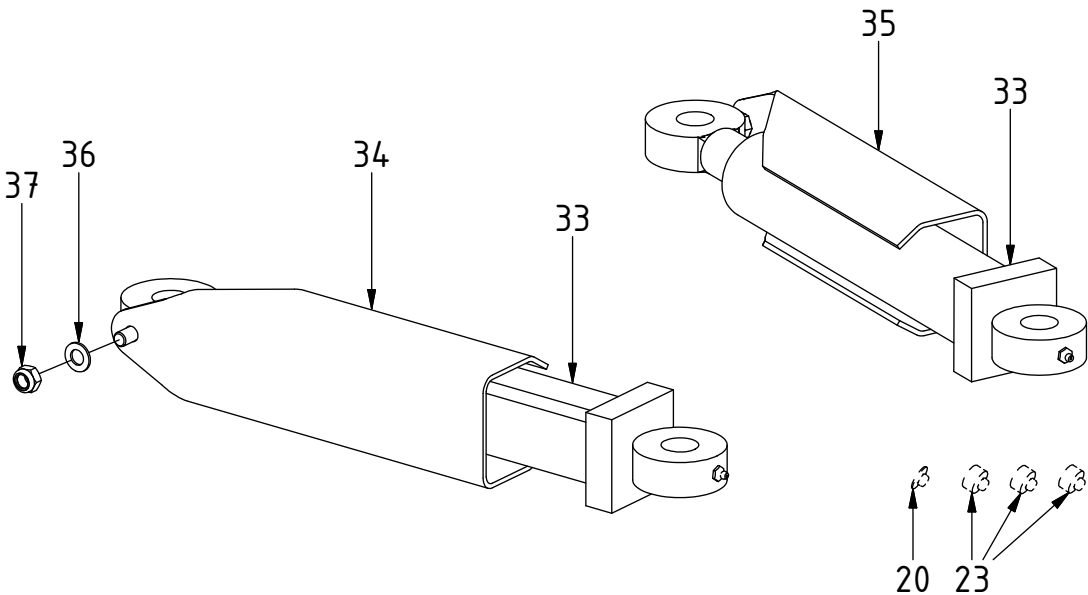


POS	DESCRIPTION	PART	QTY	COMMENTS
1	Grab arm (single) Complete	200422K	1	(POS.3-4 included)
2	Grab arm (double) Complete	200423K	1	(POS.3-4 included)
3	Bushing 30/34/45x30	630401	4	
4	Grease Nipple	711403	4	
5	Shim Ø45/32 t0,5	650525	2	
6	Axle grab arm	400521	2	
7	Spacer countersink	400659	6	
8	Flat head socket screw 8x25	610608	6	Loctite 2700
9	Grab Cylinder 10 Complete L	301898K	1	See "Grab cylinders"
10	Grab Cylinder 10 Complete R	301470K	1	See "Grab cylinders"
11	Grab Cylinder 10 rotated block L	302427K	1	See "Grab cylinders"
12	Grab Cylinder 10 rotated block R	302428K	1	See "Grab cylinders"
13	Adapters according to Quick hitch			See "Quick hitch"
14	Axle grab cyl. (against quick hitch)	402541	2	
15	Axle grab cyl. (against quick hitch) for welded shafts	400191	2	
16	Flat Washer	611010	2	
17	Hex. Nut M20 Nylon Lock	610928	2	
18	Grab cover 10 Complete L	1022975K	1	(POS.20-23 included)
19	Grab cover 10 Complete R	1022974K	1	(POS.20-23 included)
20	Plastic spacer 1,2mm	400635	2	
21	Plastic spacer 3mm	402215	2	
22	Plastic spacer 5mm	400636	2	
23	Plastic spacer 10mm	400637	2	
24	Washer NL10	611041	4	
25	Screw K6S M10x20 10.9	611812	4	
26	Spacer 5mm Grab arm	402615	1	Used if required
27	Spacer 8mm Grab arm	402170	1	Used if required
28	Spacer 10mm Grab arm	402171	1	Used if required
29	Spacers as tight as possible. Use the widest spacer underneath the cylinder ear			
30	Mount during quick hitch assembly			
31	Axle grab cyl. (against grab arm)	400461	2	(POS.4 included)

POS in order of assembly

Grab adapter GR10

Related spare parts



QTY per cover: 1 3

POS	DESCRIPTION	PART	QTY	COMMENTS
9	Grab Cylinder 10 Complete L	301898K	1	See "Grab cylinders"
10	Grab Cylinder 10 Complete R	301470K	1	See "Grab cylinders"
11	Grab Cylinder 10 rotated block L	302427K	1	See "Grab cylinders"
12	Grab Cylinder 10 rotated block R	302428K	1	See "Grab cylinders"
18	Grab cover 10 Complete L	1022975K	1	(POS.20-23 included)
19	Grab cover 10 Complete R	1022974K	1	(POS.20-23 included)
20	Plastic spacer 1,2mm	400635	2	
23	Plastic spacer 10mm	400637	2	
32	Grab cover washer	402628	2	Used until 2019
33	Grab cylinder 10 Complete	300733K	2	Replaced by POS.9-10 from 2002-12
34	Grab cover 10 Complete (1 hole) L	300736K	1	Used with POS.32 (POS.20, 23 included)
35	Grab cover 10 Complete (1 hole) R	300737K	1	Used with POS.32 (POS.20, 23 included)
36	Washer BRB FZB	611007	2	
37	Nut M6M M12 cover	610924	2	

Used between cyl.
and cover until 2019

