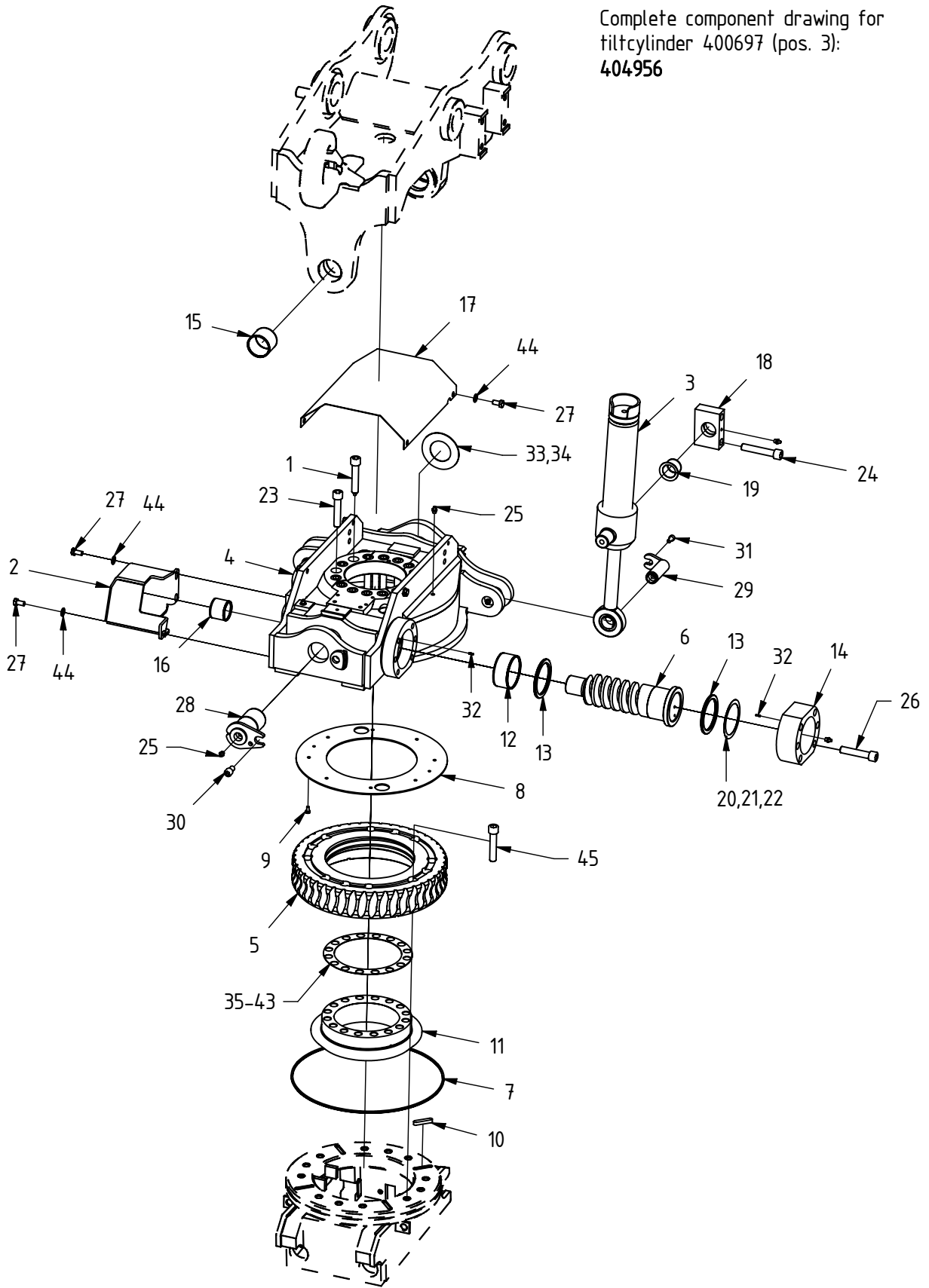


# EC15 Main (Reversed)

Published: 2006-03-28

Drawing No: 403995/G

Complete component drawing for  
tiltcylinder 400697 (pos. 3):  
404956



EC15 Main (Reversed)

Published: 2006-03-28

Drawing No: 403995/G

POS	DESCRIPTION	PART	QTY	COMMENTS
1	Grease bolt	400701	1	
2	Motor Protection	300917	1	
3	Tiltcylinder	400697	2	
4	Main Frame	100341	1	EC15
5	Wormgear	100475	1	
6	Worm Screw	200203	1	
7	O-ring	710940	1	375,0x5,0
8	Wear Washer	300775	1	
9	Hex Head Screw 6 x 12	610108	8	8.8 Zinc plated ISO 4014
10	Feather Key	650102	4	10x8x50
11	Centrerling 15	201827	1	Changed from 200204 (05-01-01)
12	Bushing 80/85x40	630103	1	WB 702
13	Axial washer	400597	2	
14	End Lid	300032	1	
15	Bushing 55/60x50	630309	2	WB 702
16	Bushing 45/50x40	630101	1	WB 702
17	Lid	300914	1	
18	Yoke Attachment	300039K	4	
19	Bushing 35/39/50x35	630402	4	WF-WB702
20	Shims Worm Screw	650513	-	0,1 mm
21	Shims Worm Screw	650514	-	0,2 mm
22	Shims Worm Screw	650515	-	0,3 mm
23	Socket Head Screw 16 x 80	610528	15	12.9 Untreated ISO 4762
24	Socket Head Screw 16 x 90	610530	8	12.9 Untreated ISO 4762
25	Grease Nipple	711403	14	1/8" Straight
26	Socket Head Screw 16 x 80	610528	6	12.9 Untreated ISO 4762
27	Hex Head Screw 10 x 20	610141	7	8.8 Zinc plated ISO 4014
28	Tiltaxle EC15 ø55	302828	2	
29	Cylinderaxle ø30	404276	2	
30	Socket Head Screw 12 x 20	610472	2	12.9 Untreated ISO 4762
31	Socket Head Screw 8 x 16	610432	2	12.9 Untreated ISO 4762
32	Centerpin	650201	2	S4 3,0x12 45S20K
33	Tiltaxle Shims	650505	-	0,5 mm
34	Tiltaxle Shims	650506	-	1 mm
35	Centre Ring Shims	201364	-	1,0 mm
36	Centre Ring Shims	201399	-	0,7 mm
37	Centre Ring Shims	201401	-	0,8 mm
38	Centre Ring Shims	201402	-	0,9 mm
39	Centre Ring Shims	201403	-	1,1 mm
40	Centre Ring Shims	202051	-	0,2 mm
41	Centre Ring Shims	202052	-	0,4 mm
42	Centre Ring Shims	202053	-	0,5 mm
43	Center Ring Shims	202626	-	0,6 mm
44	Flat Washer	611006	7	10,5x20 Zinc plated ISO 7089
45	Socket Head Screw 16 x 80	610528	12	12.9 Untreated ISO 4762