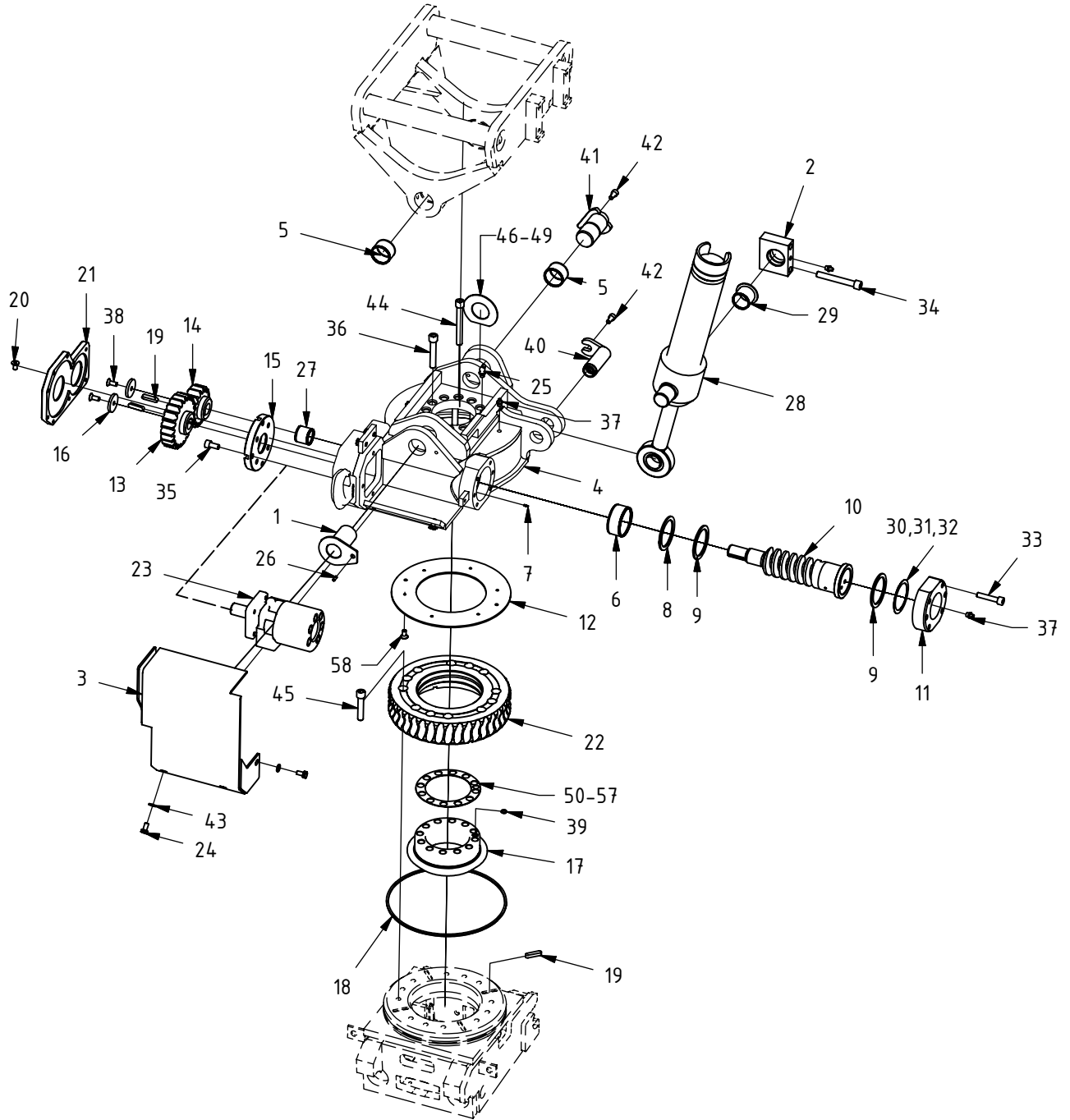


**EC05 Main (Reversed)**

Published: 2005-12-16

Drawing No: 403990/E

Complete component drawing for  
tilt cylinder 400552 (pos. 28):  
**404954**



# EC05 Main (Reversed)

| Published: 2005-12-16 |                             |          |     | Drawing No: 403990/E           |  |
|-----------------------|-----------------------------|----------|-----|--------------------------------|--|
| POS                   | DESCRIPTION                 | PART     | QTY | COMMENTS                       |  |
| 1                     | Tiltaxle                    | 404380   | 1   | Replacing 401684 from 05-10-03 |  |
| 2                     | Yoke Attachment             | 300547K  | 2   |                                |  |
| 3                     | Protecting cover            | 301328   | 1   |                                |  |
| 4                     | Main frame EC05             | 100170   | 1   |                                |  |
| 5                     | Bushing 40/44x30            | 630307   | 2   | WB 702                         |  |
| 6                     | Bushing 60/65x30            | 630305   | 1   | WB 702                         |  |
| 7                     | Centerpin                   | 650202   | 1   | S4 2,5x10 45S20K               |  |
| 8                     | Supportring                 | 650303   | 1   | 60/75                          |  |
| 9                     | Axial washer                | 400394   | 2   |                                |  |
| 10                    | Worm screw                  | 300502   | 1   |                                |  |
| 11                    | Screw Casing                | 300545   | 1   |                                |  |
| 12                    | Wear washer                 | 300544   | 1   |                                |  |
| 13                    | Gearwheel (motor)           | 400392   | 1   |                                |  |
| 14                    | Gear wheel (screw)          | 400391   | 1   |                                |  |
| 15                    | Motor washer                | 300546   | 1   |                                |  |
| 16                    | Washer                      | 400393   | 2   |                                |  |
| 17                    | Centerring 05               | 302839   | 1   | Changed from 300501 (05-01-01) |  |
| 18                    | O-ring                      | 710922   | 1   | 250,0x5,0                      |  |
| 19                    | Feather Key                 | 650104   | 6   | 8x7x36                         |  |
| 20                    | Flat head socket screw 6x20 | 610310   | 9   | 10.9 Untreated DIN 7991        |  |
| 21                    | Gerabox casing              | 200108   | 1   |                                |  |
| 22                    | Worm wheel                  | 200244   | 1   |                                |  |
| 23                    | Hydraulic motor             | 720107   | 1   | 100 cc                         |  |
| 24                    | Hex Head Screw 8 x 16       | 610122   | 5   | 8.8 Zinc plated ISO 4014       |  |
| 25                    | Grease Nipple               | 7114.01  | 1   | M8 45°                         |  |
| 26                    | Set Screw M8x16             | 610808   | 1   | OBEH                           |  |
| 27                    | Bushing 32/35x30            | 630306   | 1   | WB 702                         |  |
| 28                    | Tiltcylinder                | 400552   | 1   |                                |  |
| 29                    | Bushing 35/39/50x35         | 630402   | 2   | WF-WB702                       |  |
| 30                    | Shims 60/75x0,1             | 650516   | -   |                                |  |
| 31                    | Shims 60/75x0,2             | 650517   | -   |                                |  |
| 32                    | Shims 60/75x0,3             | 650518   | -   |                                |  |
| 33                    | Socket Head Screw 10 x 50   | 610457   | 6   | 12.9 Untreated ISO 4762        |  |
| 34                    | Socket Head Screw 12 x 90   | 610486   | 4   | 12.9 Untreated ISO 4762        |  |
| 35                    | Socket Head Screw 10 x 20   | 610451   | 7   | 12.9 Untreated ISO 4762        |  |
| 36                    | Socket Head Screw 12 x 70   | 610482   | 8   | 12.9 Untreated ISO 4762        |  |
| 37                    | Grease Nipple               | 7114.03  | 8   |                                |  |
| 38                    | Flat head socket screw 8x20 | 610634   | 2   | 10.9 Untreated DIN 7991        |  |
| 39                    | O-ring                      | 710901   | 1   | 9,25x1,78                      |  |
| 40                    | Cylinderaxle ø30            | 404276   | 1   | Replacing 400552 from 05-10-03 |  |
| 41                    | Tiltaxle 05 hardened        | 404376   | 1   | Replacing 400396 from 05-10-03 |  |
| 42                    | Socket Head Screw 8 x 16    | 610432   | 2   | 12.9 Untreated ISO 4762        |  |
| 43                    | Flat Washer                 | 611005   | 5   | ISO 7089 8,4x16 Zinc Plated    |  |
| 44                    | Socket Head Screw 12 x 100  | 610488   | 4   | 12.9 Untreated ISO 4762        |  |
| 45                    | Socket Head Screw 12 x 60   | 610480   | 12  | 12.9 Untreated ISO 4762        |  |
| 46                    | Tiltaxle Shims              | 400469-2 | -   | 2 mm                           |  |
| 47                    | Tiltaxle Shims              | 400469-3 | -   | 3 mm                           |  |
| 48                    | Tiltaxle Shims              | 650520   | -   | 0,5 mm                         |  |
| 49                    | Tiltaxle Shims              | 650521   | -   | 1,0 mm                         |  |
| 50                    | Centre Ring Shims           | 201362   | -   | 1,0 mm                         |  |
| 51                    | Centre Ring Shims           | 201389   | -   | 0,7 mm                         |  |
| 52                    | Centre Ring Shims           | 201390   | -   | 0,8 mm                         |  |
| 53                    | Centre Ring Shims           | 201392   | -   | 0,9 mm                         |  |
| 54                    | Centre Ring Shims           | 201393   | -   | 1,1 mm                         |  |
| 55                    | Centre Ring Shims           | 202045   | -   | 0,2 mm                         |  |
| 56                    | Centre Ring Shims           | 202046   | -   | 0,4 mm                         |  |
| 57                    | Centre Ring Shims           | 202047   | -   | 0,5 mm                         |  |
| 58                    | Flat Head Socket Screw 4x10 | 610605   | 6   |                                |  |