

COVERSHEET

Planned document changes:

Briefly:

No planned changes.

Document changes:

Date:	Change:	Rev. after change:
2025-03-03	New document for QS cyl. in S machine hitch 2023-2025.	-

Readers note:

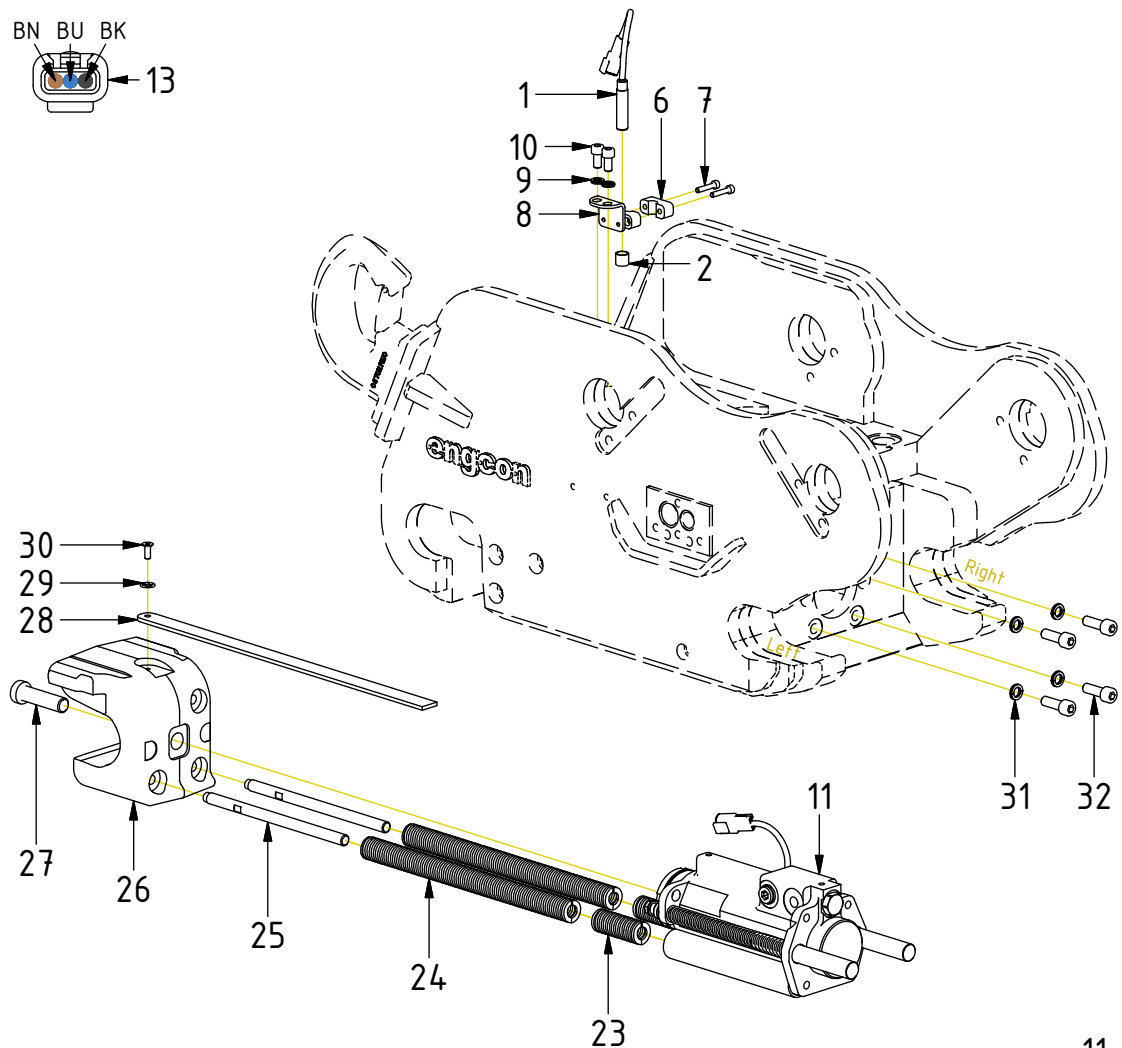
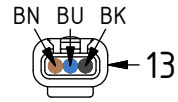
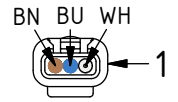


Indicates instruction.

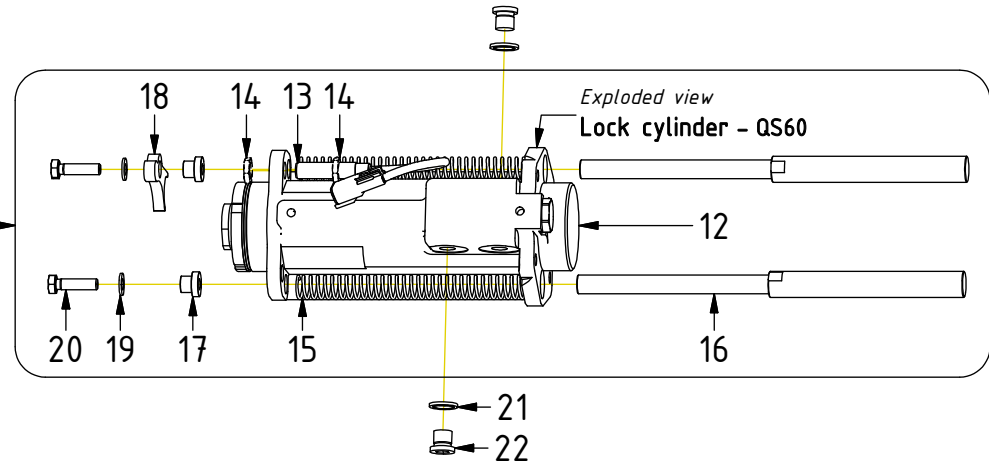


Represents Hose.

Dashed lines for overview, mounts
on other pages/assemblies.

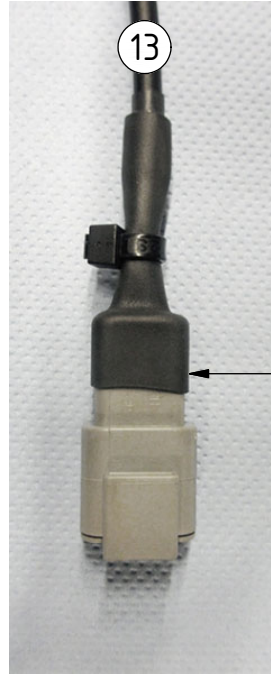
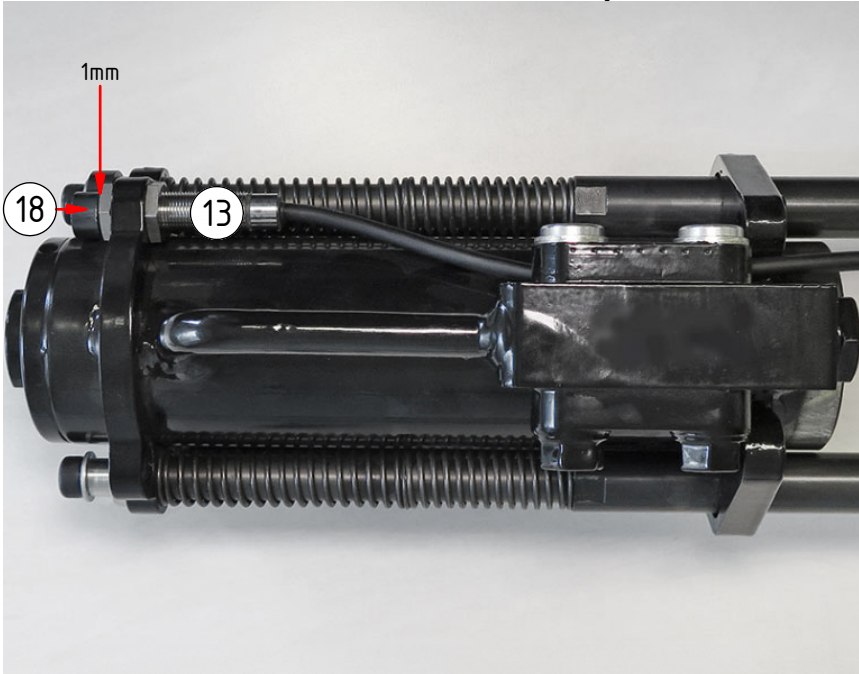


POS	DESCRIPTION	PART	QTY	COMMENTS
1	Inductive sensor QSC (hook)	1040358	1	Mount just below surface edge
2	Protection lid, inductive sensor	8000056	1	
6	Clamp half M12 sensor	1065219	2	
7	Screw MC6S M5x25 12.9	610402	2	
8	Sensor holder	1074193	1	
9	Washer NL 8mm	611040	2	
10	Screw MC6S M8x16 12.9 ZFSHL	610432	2	
11	Lock cyl. QS60 V4 Comp. Forg. QSC	1052550	1	(POS.12-20 incl.)
12	Lock cylinder QS60 V4 Forged	1045379	1	
13	Inductive sensor QSC (cylinder)	1040359	1	Mount 1mm from Sensor plate
14	Hex nut			(Incl. with sensor)
15	Spring 16x175	1049973	2	
16	Ejector	1036405	2	
17	Spacer	1036406	2	
18	Sensor plate	1036413	1	Assemble with slight play
19	Flat Washer	611005	2	
20	Screw M6S M8x30 8,8 FZB	611538	2	Loxéal 83-52
21	Washer GBR04 1/4	710702	2	
22	Plug 1/4"	711505	2	
23	Spring 25x64	1024022	2	
24	Spring 25x305	1024021	2	
25	Steering	1025621	2	Loxéal 83-52
26	Hook V2 QS60 Cast	1046654	1	
27	Screw MLC6S M16x60 10.9	610721	1	Loxéal 83-52. Torque: 136Nm
28	Indicator pin QS (610mm)	1036201	1	Cut to fit
29	Starlock 6mm	6000415	1	
30	Screw MF6S M6x16 10.9 untreated	610604	1	Loxéal 83-52
31	Washer NL 10mm	611041	4	
32	Screw MC6S M10x30 12.9 ZFSHL	612018	4	



POS in order of assembly

Sensor Cylinder



POS	DESCRIPTION	PART	QTY	COMMENTS
1	Inductive sensor QSC (hook)	1040358	1	Mount just below surface edge
3	Apply dielectric compound before inserting wedge. Peel cables 5mm			
4	Shrink tube on both connectors			
5	Cable tie on cylinder connector			
13	Inductive sensor QSC (cylinder)	1040359	1	Mount 1mm from Sensor plate
18	Sensor plate	1036413	1	Assemble with slight play

POS in order of assembly

Sensor Hook

