



Planned document changes:

Briefly:

No planned changes.

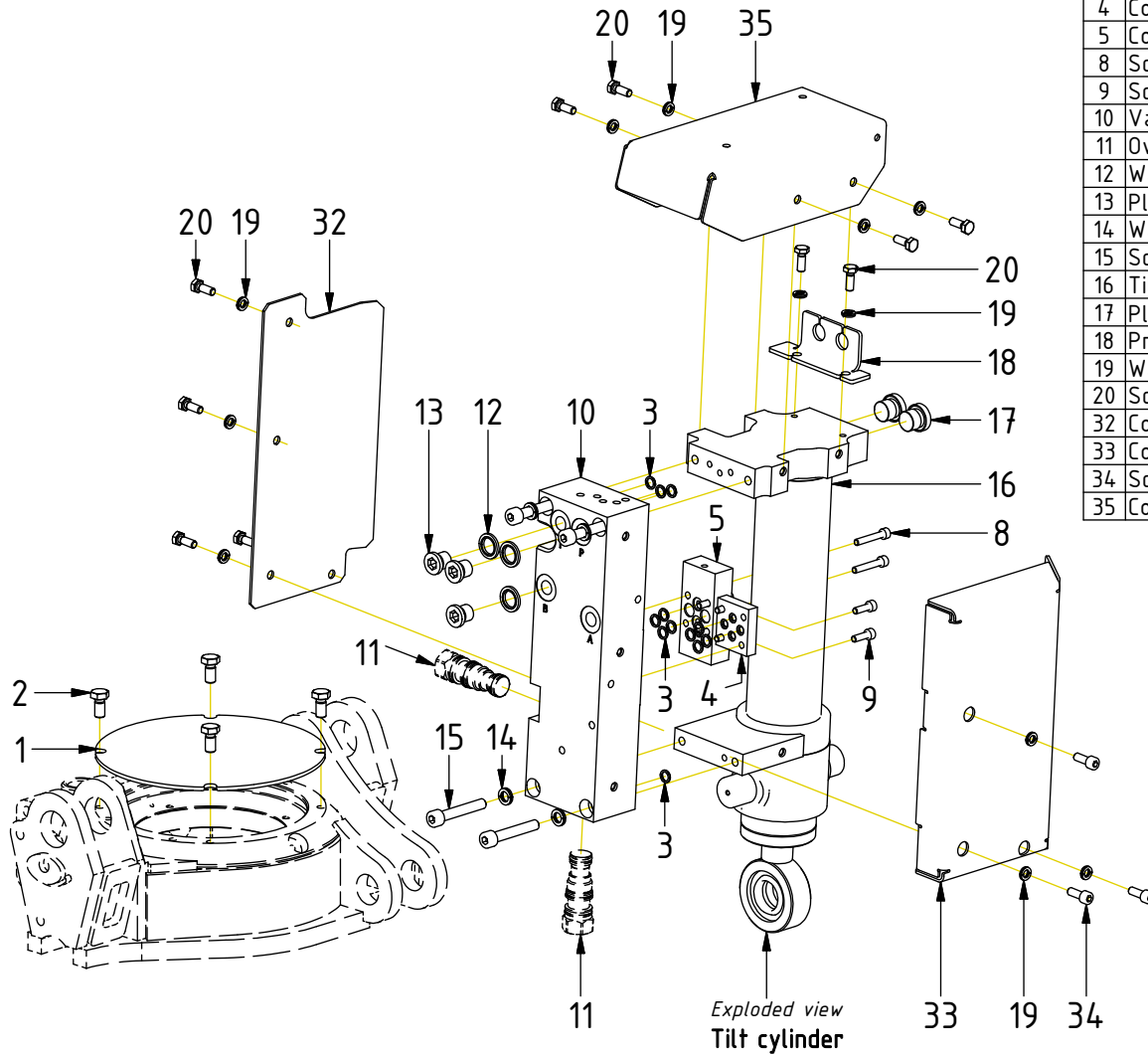
Document changes:

Date:	Change:	Rev. after change:
2025-02-03	Hoses corrected.	A
2024-11-12	New document.	-

Readers note: Indicates instruction. Represents Hose.

Dashed lines for overview, mounts
on other pages/assemblies.

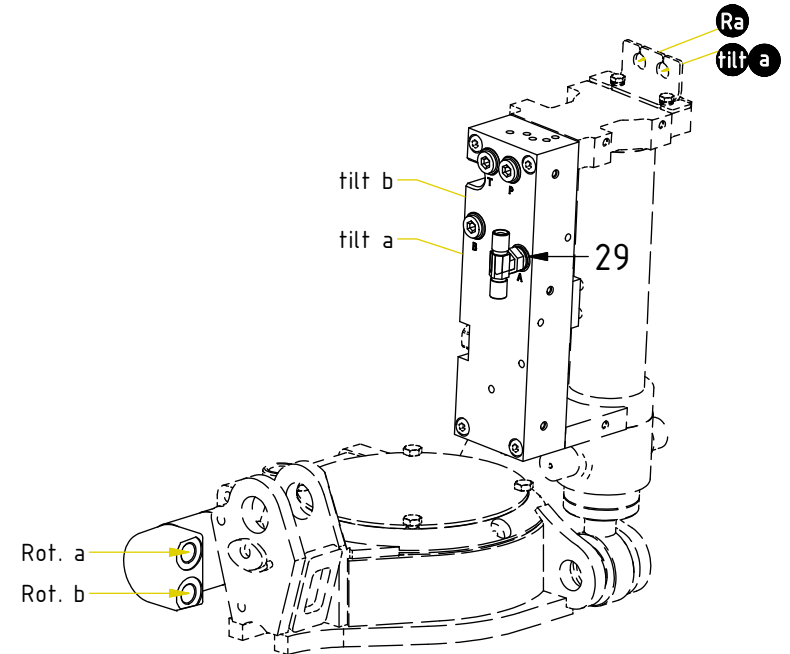
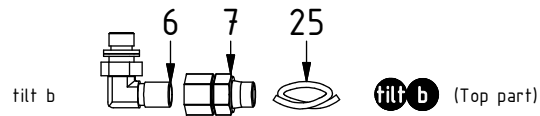
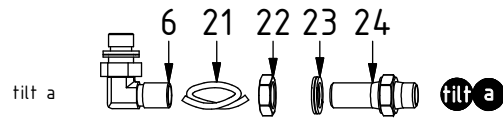
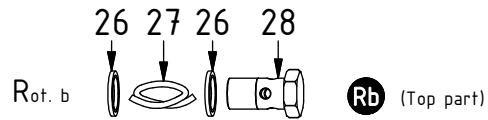
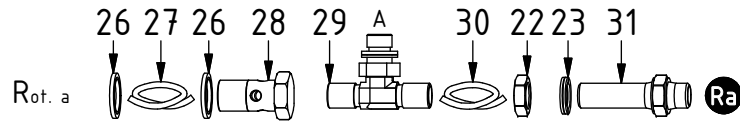
POS	DESCRIPTION	PART	QTY	COMMENTS
1	Cover plate EC02BU	303444	1	
2	Screw M6S M8x16 8,8 FZB	610122	4	Loxeal 55-02
3	O-ring 7,65x1,78	710960	12	
4	Coverblock NG4	730152	1	
5	Connection block 2x1/4" NG4	1009586	1	
8	Screw MC6S M5x30 12.9	610403	4	Torque: 9,7Nm
9	Screw MC6S M5x16 12.9	610401	4	Torque: 9,7Nm
10	Valve block tilt cylinder Complete	7000635	1	(POS.11 incl.)
11	Overcenter valve CBCHXXN41-47Nm	7000647	2	
12	Washer GBR04 1/4	710702	3	
13	Plug 153-04 (1/4")	711505	3	
14	Washer NL 8mm	611040	4	
15	Screw MC6S M8x50 12.9	610439	4	
16	Tilt cylinder EC02B	1053601	1	Part of top part
17	Plug 70125-06 (3/8")	711504	2	
18	Protection plate	1033484	1	
19	Washer NL 6mm	611039	13	
20	Screw M6S M6x16 10.9 untreated	610109	10	
32	Cover tilt cylinder Right	1029781	1	
33	Cover tilt cylinder Left	1068975	1	
34	Screw MC6S M6x16 12.9 ZFSL	6000017	3	
35	Cover tilt cylinder Top	1029902	1	



POS in order of assembly

Hoses

POS	DESCRIPTION	PART	QTY	COMMENTS
6	Adapter 401-04-04 90° (1/4")	710151	2	
7	Adapter 703-04-04 (1/4")	712205	1	
21	Hose Feed Tilt a	7000657	1	
22	Counternut 1270-04 (1/4")	710250	2	
23	Washer NL 1/2"	611096	2	
24	Adapter 1260-04-04 (1/4")	710240	1	
25	Hose Feed Tilt b	7000581	1	
26	Washer GBR06 3/8	710703	4	
27	Hose Rotation	7001707	2	
28	Banjo bolt 4451-06 (3/8")	710272	2	
29	Adapter 403-04-04 (1/4")	7000106	1	
30	Hose Rotation a	7000109	1	
31	Adapter 1260-04-40 (1/4")	710261	1	



POS in order of assembly

POS	DESCRIPTION	PART	QTY	COMMENTS
21	Hose Feed Tilt a	7000657	1	
25	Hose Feed Tilt b	7000581	1	
27	Hose Rotation	7001707	2	
30	Hose Rotation a	7000109	1	
●	Use cable ties			

