

COVERSHEET

Planned document changes:

Briefly:

No planned changes.

Document changes:

Date:	Change:	Rev. after change:
2025-01-30	Photos added.	B
2024-10-15	ePS cable for ss9 corrected.	A
2024-07-01	New document.	-

Readers note:

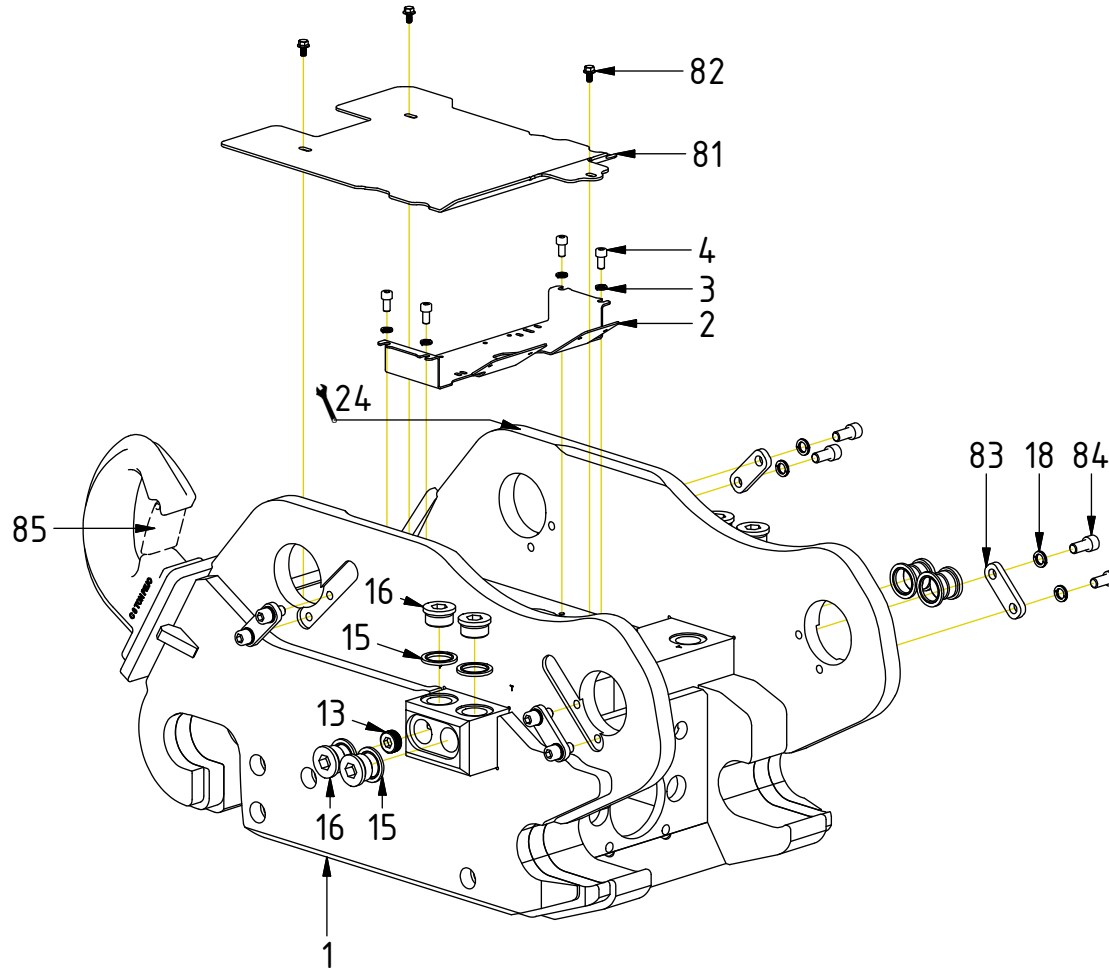
Indicates instruction.



Represents Hose.

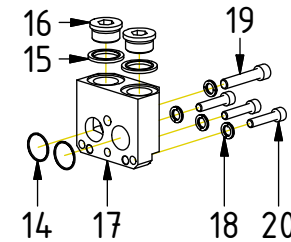
Dashed lines for overview, mounts
on other pages/assemblies.

- 5-6
- 7
- 8
- 9-10
- 11-12

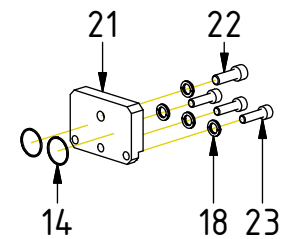


POS	DESCRIPTION	PART	QTY	COMMENTS
1	Quick hitch is selected via engcon			(Machine dependent)
2	Bolted plate S70	1074887	1	
3	Washer NL 8mm	611040	10	
4	Screw MC6S M8x16 12.9 ZFSHL	610432	4	
5	Strain relief plate ZL60	8000703	1	
6	Strain relief plate ZL87	8000704	1	
7	Blind rivet 4,0x12,3 DIN7337	6000294	6	
8	Holder Deutsch coupling	810662	2	
9	Screw K6S M5x16 10.9 FZB	611818	1	For DC2 1bl
10	Screw K6S M5x10 10.9 FZB	6000408	3	QTY: 1 for DC2 1bl
11	Rubber steel clamp ø6	6000027	1	
13	Pipe Plug 3/4" for 2bl.	7000261	2	For EC-Oil 2bl. See position on p.3
14	O-ring 31,47x1,78	7001901	6	QTY depends on config.
15	Washer GBR16 1	710707	10	QTY depends on config.
16	Plug Din 908 G1A	7001902	10	QTY depends on config.
17	Side block S70 hose connection	1073421	2	
18	Washer NL 12mm	611042	8	QTY: 16 for Wide
19	Screw MC6S M12x60 12.9 ZFSHL	6000140	2	
20	Screw MC6S M10x45 12.9 ZFSHL	612021	6	
21	Cover plate S70 (without sideblock)	1073393	2	
22	Screw MC6S M12x35 12.9 ZFSHL	6000150	2	
23	Screw MC6S M10x35 12.9 Geomet	612019	6	
24	Punch serial number into hitch			
81	Cover plate S70	1074714	1	
82	Screw M6SF 8x12H Riffled	6000120	3	
83	Lock plate for axles	1067225	4	Assemble with slight play
84	Screw MC6S M12x25 12.9 ZFSHL	6000164	8	
85	Safety latch	405177	1	Lifting hook spare part

Wide w. sideblock:
(std. for wide)



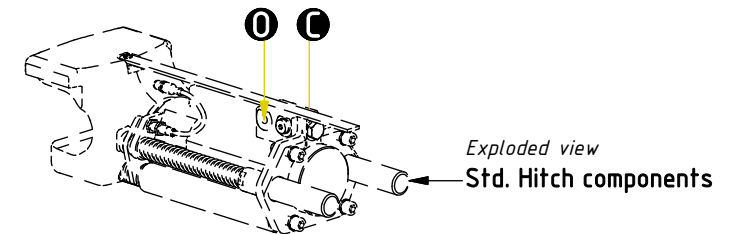
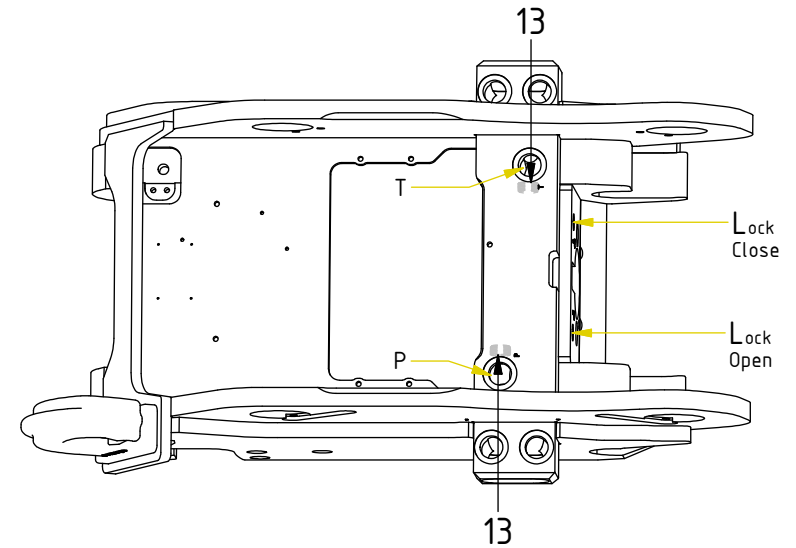
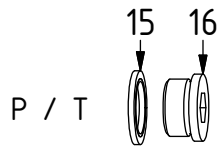
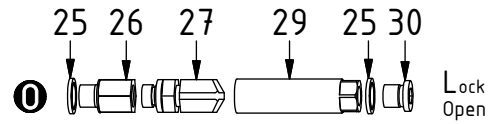
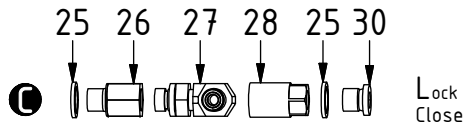
Wide w/o sideblock:



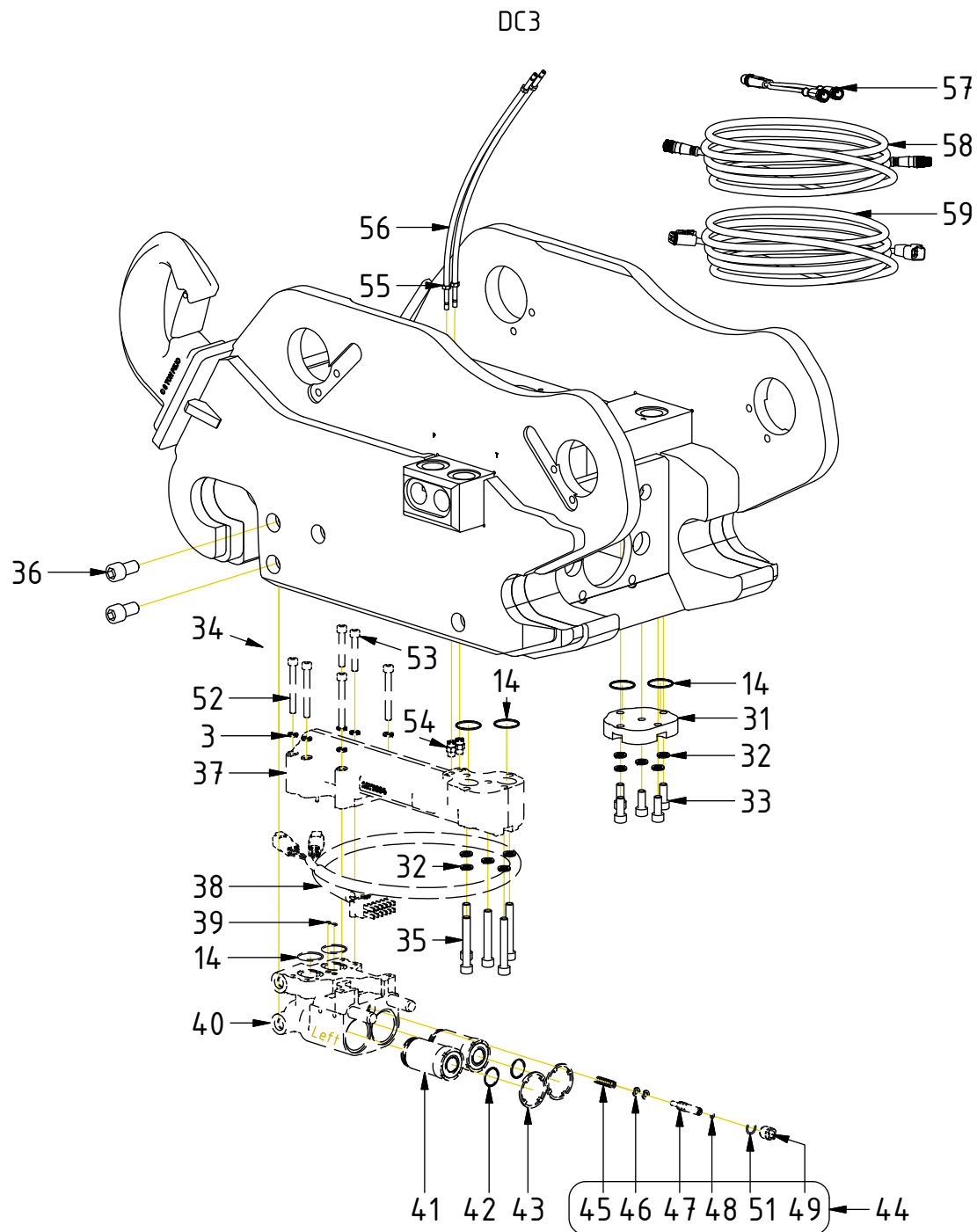
Hydraulics

POS	DESCRIPTION	PART	QTY	COMMENTS
13	Pipe Plug 3/4" for 2bl.	7000261	2	For EC-Oil 2bl.
15	Washer GBR16 1	710707	10	QTY depends on config.
16	Plug Din 908 G1A	7001902	10	QTY depends on config.
25	Washer GBR04 1/4	710702	4	
26	Adapter 236-04-04	1013885	2	
27	Adapter 067005-04-04 (1/4")	7000247	2	
28	Lock adapter tube Short	1071217	1	Loxeal 83-52
29	Lock adapter tube Long	1071216	1	Loxeal 83-52
30	Plug 153-04 (1/4")	711505	2	

POS in order of assembly



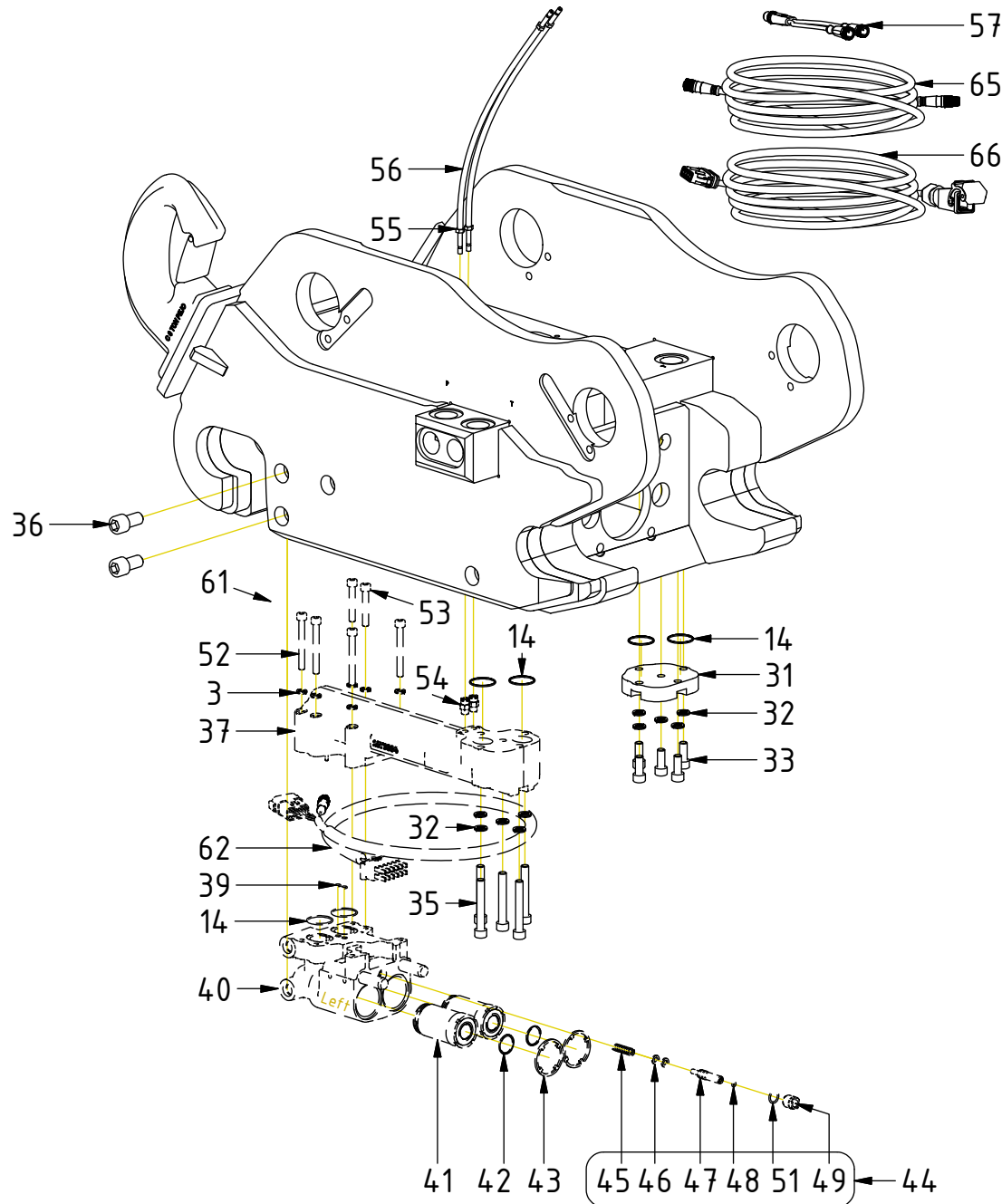
Machine hitch - S70



POS	DESCRIPTION	PART	QTY	COMMENTS
3	Washer NL 8mm	611040	10	
14	O-ring 31,47x1,78	7001901	6	QTY depends on config.
31	Covering plate S70	1073694	1	
32	Washer NL 10mm	611041	10	
33	Screw MC6S M10x25 12.9 ZFSL	6000195	5	
34	Connection bl. w. ECO hy.el.cl. DC3 Complete	1077192	1	(POS.3, 14, 37-41,43-44,52-54 incl.)
35	Screw MC6S M10x70 12.9 ZFSL	6000110	5	
36	Screw MC6S M16x30 12.9 ZFSL	6000201	2	Torque: 333Nm
37	Connection block ECO Left	1073830	1	
38	Power plug ECO W Hitch (4P, 6P)	8002100	1	
39	O-ring 4,48x1,78	7001849	2	
40	Block ECO70 W Hitch S70 Left	1073808	1	
41	Coupling ECO W 3/4" V3	1050579	2	Torque: 60Nm. (POS.42 incl.)
42	Flat sealing for ECO 3/4" V3	1050580	2	
43	Dirt protection Block ECO 3/4"	1028275	2	
44	Lubrication kit ECO W V2	1050794	1	(POS.45-51 incl.)
45	Spring 6058	1024113	1	
46	Piston sealing KPOR130 12x7,1x2,2	1024112	2	(O-ring incl. with seal ring)
47	Grease piston	1024111	1	
48	O-ring 3,69x1,78	1024115	1	
49	Nut grease piston	1047688	1	Wrap with thread sealing tape
50	O-ring 9,25x1,78	712429	1	Located inside nut
51	O-ring 14x2	7000767	1	
52	Screw MC6S M8x70 12.9 ZFSL	6000286	4	
53	Screw MC6S M8x50 12.9 Geomet	611597	2	
54	Push-in coupling R1/8"	790172	2	
55	Pipe stub straight Push-in	790175	2	
56	Hose 2m - lubricant ECO	790176	1	
57	Y-split M12-8P->2x M12-4S QSM/S	8002139	1	Attach to QS sensors
58	Cable QS-QLM Machine hitch 3,4m	8002250	1	Attach to Y-split
59	Cable 3m ECO W DC3 (4S, 4P)	8002297	1	Attach to 4P

POS in order of assembly

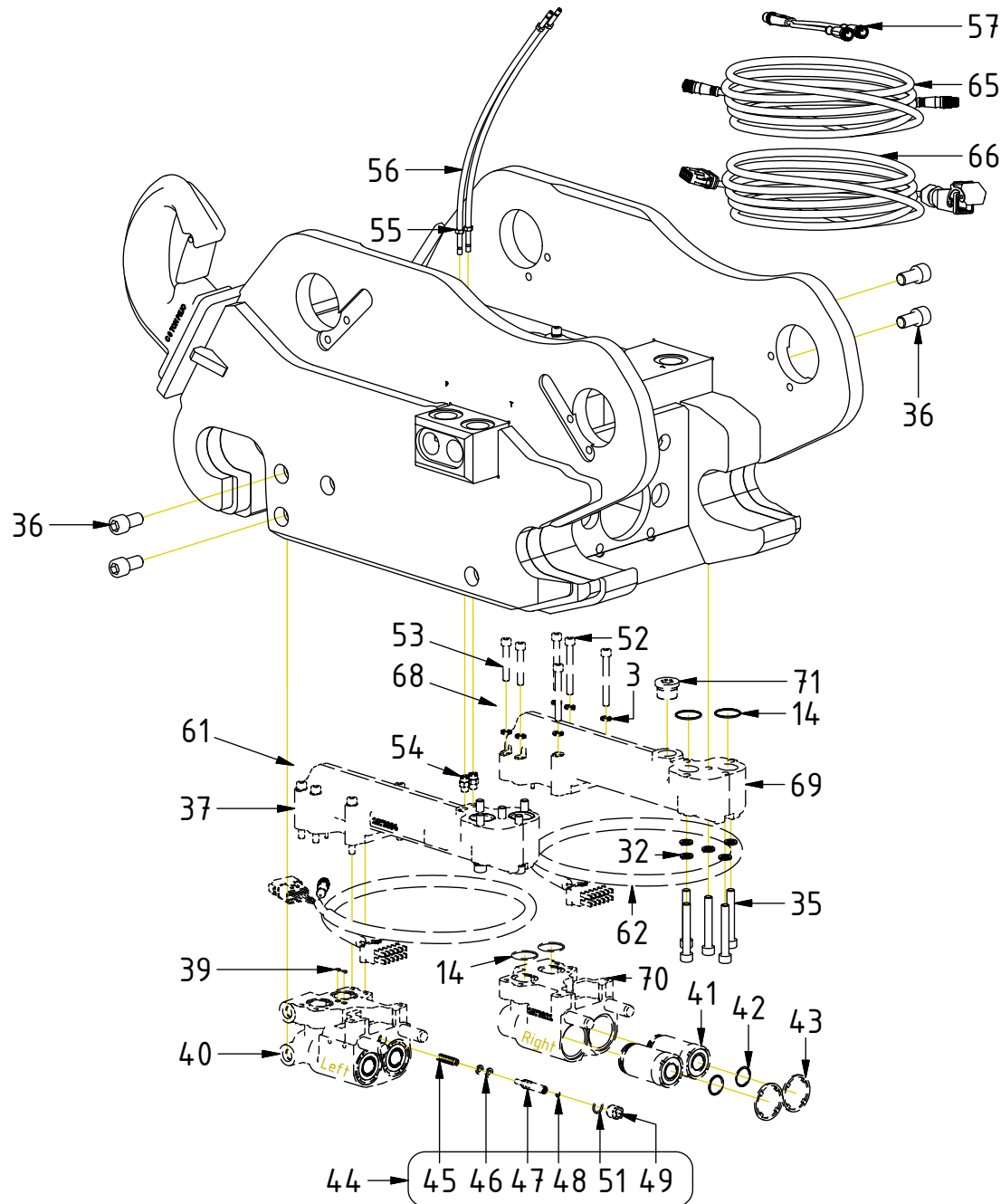
DC2 Std. config.



POS	DESCRIPTION	PART	QTY	COMMENTS
3	Washer NL 8mm	611040	10	
14	O-ring 31,47x1,78	7001901	6	QTY depends on config.
31	Covering plate S70	1073694	1	
32	Washer NL 10mm	611041	10	
33	Screw MC6S M10x25 12.9 ZFSL	6000195	5	
35	Screw MC6S M10x70 12.9 ZFSL	6000110	5	
36	Screw MC6S M16x30 12.9 ZFSL	6000201	2	Torque: 333Nm
37	Connection block ECO Left	1073830	1	
39	O-ring 4,48x1,78	7001849	2	
40	Block ECO70 W Hitch S70 Left	1073808	1	
41	Coupling ECO W 3/4" V3	1050579	2	Torque: 60Nm. (POS.42 incl.)
42	Flat sealing for ECO 3/4" V3	1050580	2	
43	Dirt protection Block ECO 3/4"	1028275	2	
44	Lubrication kit ECO W V2	1050794	1	(POS.45-51 incl.)
45	Spring 6058	1024113	1	
46	Piston sealing KPOR130 12x7,1x2,2	1024112	2	(O-ring incl. with seal ring)
47	Grease piston	1024111	1	
48	O-ring 3,69x1,78	1024115	1	
49	Nut grease piston	1047688	1	Wrap with thread sealing tape
50	O-ring 9,25x1,78	712429	1	Located inside nut
51	O-ring 14x2	7000767	1	
52	Screw MC6S M8x70 12.9 ZFSL	6000286	4	
53	Screw MC6S M8x50 12.9 Geomet	611597	2	
54	Push-in coupling R1/8"	790172	2	
55	Pipe stub straight Push-in	790175	2	
56	Hose 2m - lubricant ECO	790176	1	
57	Y-split M12-8P->2x M12-4S QSM/S	8002139	1	Attach to QS sensors
61	Connect.bl. w ECO hy.el.cl. DC2 Comp.	1074950	1	(POS.3,14,37,39-41,43-44,52-54,62)
62	Power plug ECO W Hitch (12P, M12)	8002197	1	Cable gland torque: 6Nm
65	Cable QS-QLM Machinehitch 3,4m DC2	8002249	1	Attach to Y-split
66	Machine cable ECO70 W DC2	1048528	1	Attach to 12P

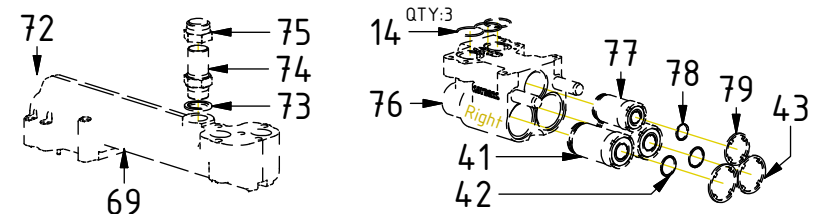
POS in order of assembly

DC2 Option 2bl.

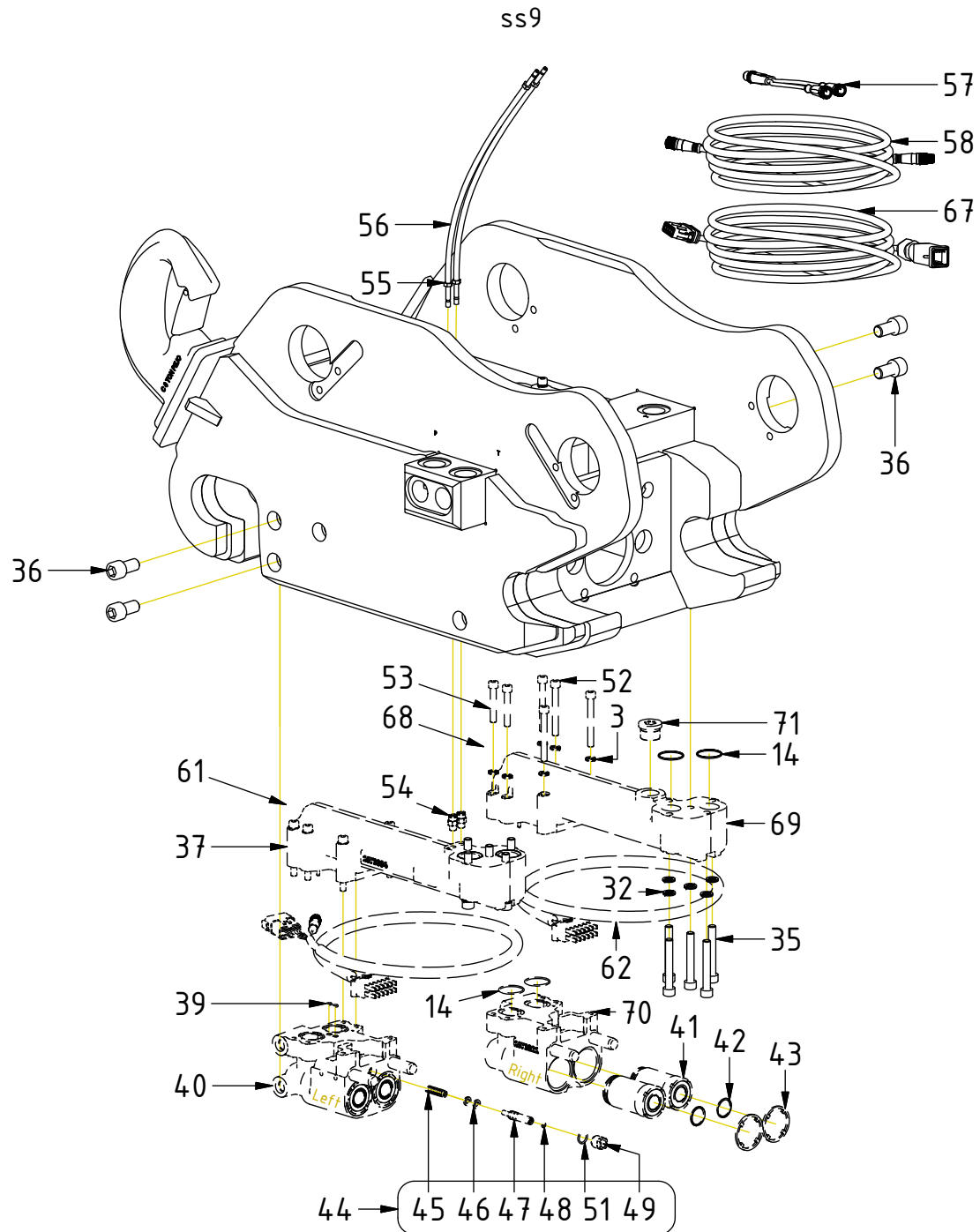


POS	DESCRIPTION	PART	QTY	COMMENTS
3	Washer NL 8mm	611040	10	
14	O-ring 31,47x1,78	7001901	6	QTY depends on config.
32	Washer NL 10mm	611041	10	
35	Screw MC6S M10x70 12.9 ZFSHL	6000110	5	
36	Screw MC6S M16x30 12.9 ZFSHL	6000201	2	Torque: 333Nm
37	Connection block ECO Left	1073830	1	
39	O-ring 4,48x1,78	7001849	2	
40	Block ECO70 W Hitch S70 Left	1073808	1	
41	Coupling ECO W 3/4" V3	1050579	2	Torque: 60Nm. (POS.42 incl.)
42	Flat sealing for ECO 3/4" V3	1050580	2	
43	Dirt protection Block ECO 3/4"	1028275	2	
44	Lubrication kit ECO W V2	1050794	1	(POS.45-51 incl.)
45	Spring 6058	1024113	1	
46	Piston sealing KPOR130 12x7,1x2,2	1024112	2	(O-ring incl. with seal ring)
47	Grease piston	1024111	1	
48	O-ring 3,69x1,78	1024115	1	
49	Nut grease piston	1047688	1	Wrap with thread sealing tape
50	O-ring 9,25x1,78	712429	1	Located inside nut
51	O-ring 14x2	7000767	1	
52	Screw MC6S M8x70 12.9 ZFSHL	6000286	4	
53	Screw MC6S M8x50 12.9 Geomet	611597	2	
54	Push-in coupling R1/8"	790172	2	
55	Pipe stub straight Push-in	790175	2	
56	Hose 2m - lubricant ECO	790176	1	
57	Y-split M12-8P->2x M12-4S QSM/S	8002139	1	Attach to QS sensors
61	Connect.bl. w ECO hy.el.cl. DC2 Comp.	1074950	1	(POS.3,14,37,39-41,43-44,52-54,62)
62	Power plug ECO W Hitch (12P, M12)	8002197	1	Cable gland torque: 6Nm
65	Cable QS-QLM Machinehitch 3,4m DC2	8002249	1	Attach to Y-split
66	Machine cable ECO70 W DC2	1048528	1	Attach to Left 12P
68	Connection bl. w. ECO hy.el. Compl.	1074953	1	(POS.3,14,41,43,52-54,62,69-71 incl.)
69	Connection block ECO Right	1073829	1	
70	Block ECO60 W Hitch S70 Right	1074175	1	
71	Plug 70125-12 (3/4")	711532	1	
72	Connection bl. w. ECO 3hy. Compl.	1074951	1	(POS.3,14,41,43,52-53,69-70,73-77,79)
73	Washer GBR12 3/4	710706	1	
74	Adapter 1260-12-12 (3/4")	712210	1	
75	Protective Bonnet 155-12 (3/4")	711629	1	
76	Block ECO70 W Hitch S70 Right 5hy.	1073322	1	
77	Coupling ECO W 1/2" V3	1054580	1	Torque: 60Nm. (POS.78 incl.)
78	Flat sealing for ECO W 1/2" V3	1050018	1	
79	Dirt protection block ECO 1/2"	1028229	1	

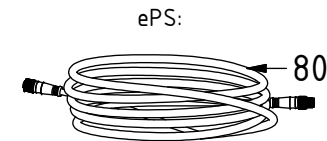
Option 5 hyd:



Machine hitch - S70

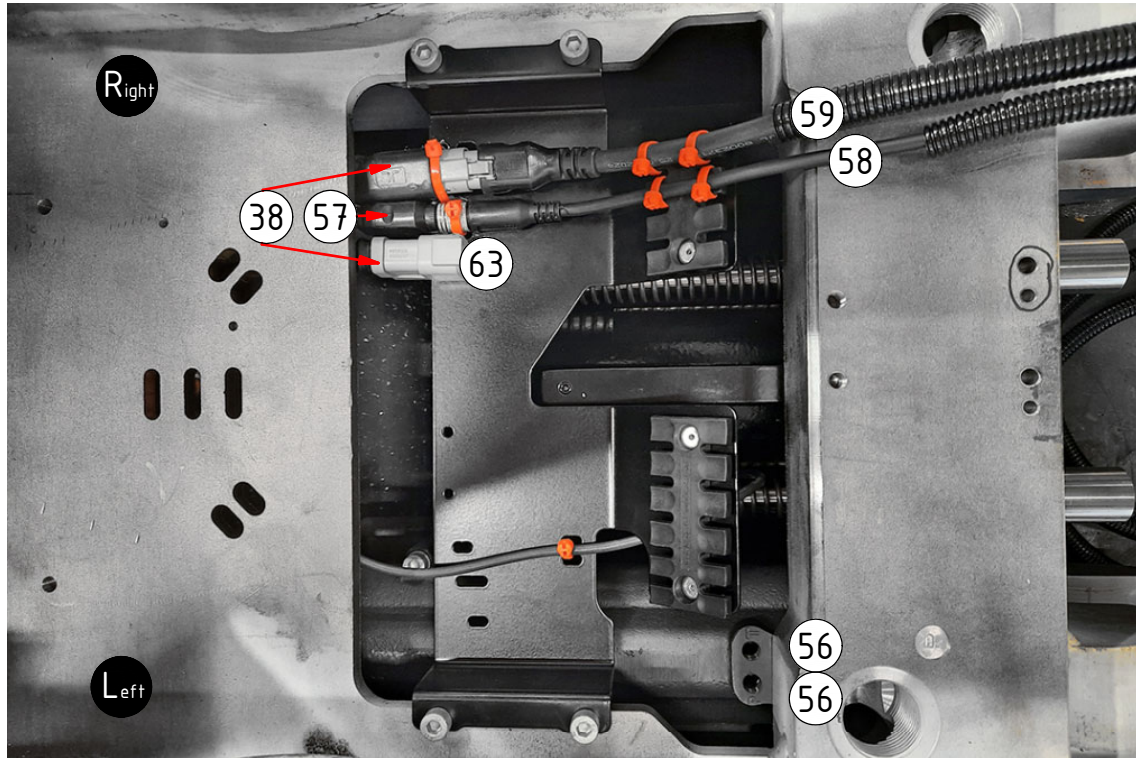


POS	DESCRIPTION	PART	QTY	COMMENTS
3	Washer NL 8mm	611040	10	
14	O-ring 31,47x1,78	7001901	6	QTY depends on config.
32	Washer NL 10mm	611041	10	
35	Screw MC6S M10x70 12.9 ZFSL	6000110	5	
36	Screw MC6S M16x30 12.9 ZFSL	6000201	2	Torque: 333Nm
37	Connection block ECO Left	1073830	1	
39	O-ring 4,48x1,78	7001849	2	
40	Block ECO70 W Hitch S70 Left	1073808	1	
41	Coupling ECO W 3/4" V3	1050579	2	Torque: 60Nm. (POS.42 incl.)
42	Flat sealing for ECO 3/4" V3	1050580	2	
43	Dirt protection Block ECO 3/4"	1028275	2	
44	Lubrication kit ECO W V2	1050794	1	(POS.45-51 incl.)
45	Spring 6058	1024113	1	
46	Piston sealing KPOR130 12x7,1x2,2	1024112	2	(O-ring incl. with seal ring)
47	Grease piston	1024111	1	
48	O-ring 3,69x1,78	1024115	1	
49	Nut grease piston	1047688	1	Wrap with thread sealing tape
50	O-ring 9,25x1,78	712429	1	Located inside nut
51	O-ring 14x2	7000767	1	
52	Screw MC6S M8x70 12.9 ZFSL	6000286	4	
53	Screw MC6S M8x50 12.9 Geomet	611597	2	
54	Push-in coupling R1/8"	790172	2	
55	Pipe stub straight Push-in	790175	2	
56	Hose 2m - lubricant ECO	790176	1	
57	Y-split M12-8P->2x M12-4S QSM/S	8002139	1	Attach to QS sensors
58	Cable QS-QLM Machine hitch 3,4m	8002250	1	Attach to Y-split
61	Connect.bl. w ECO hy.el.cl. DC2 Comp.	1074950	1	(POS.3,14,37,39-41,43-44,52-54,62)
62	Power plug ECO W Hitch (12P, M12)	8002197	1	Cable gland torque: 6Nm
67	Machinecable ECO70W ss9-2 (1x 12P)	1036846	1	Attach to Left 12P
68	Connection bl. w. ECO hy.el. Compl.	1074953	1	(POS.3,14,41,43,52-54,62,69-71 incl.)
69	Connection block ECO Right	1073829	1	
70	Block ECO60 W Hitch S70 Right	1074175	1	
71	Plug 70125-12 (3/4")	711532	1	
80	Cable ePS ECO W ss9	8002458	1	



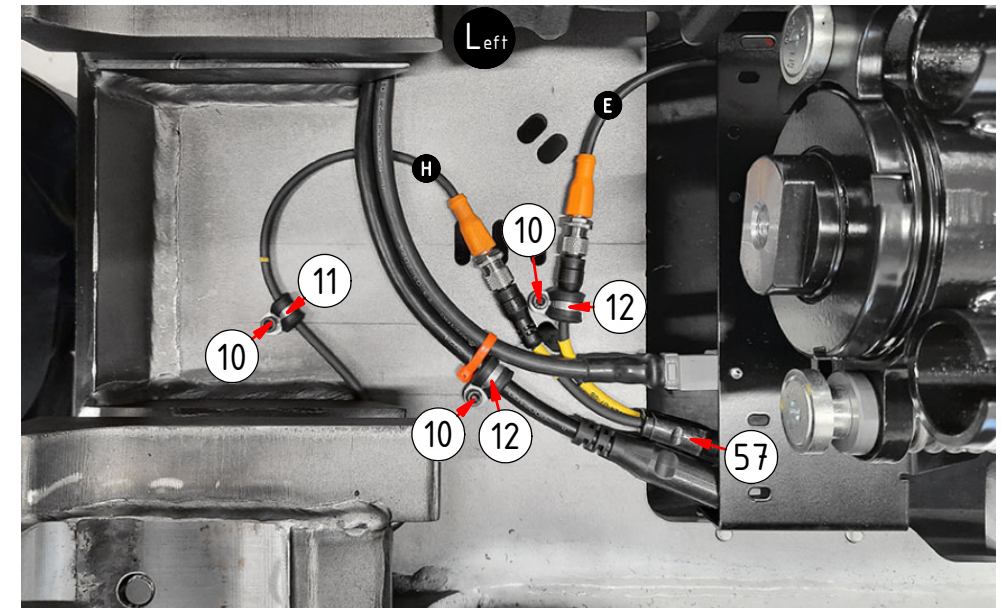
POS in order of assembly

DC3

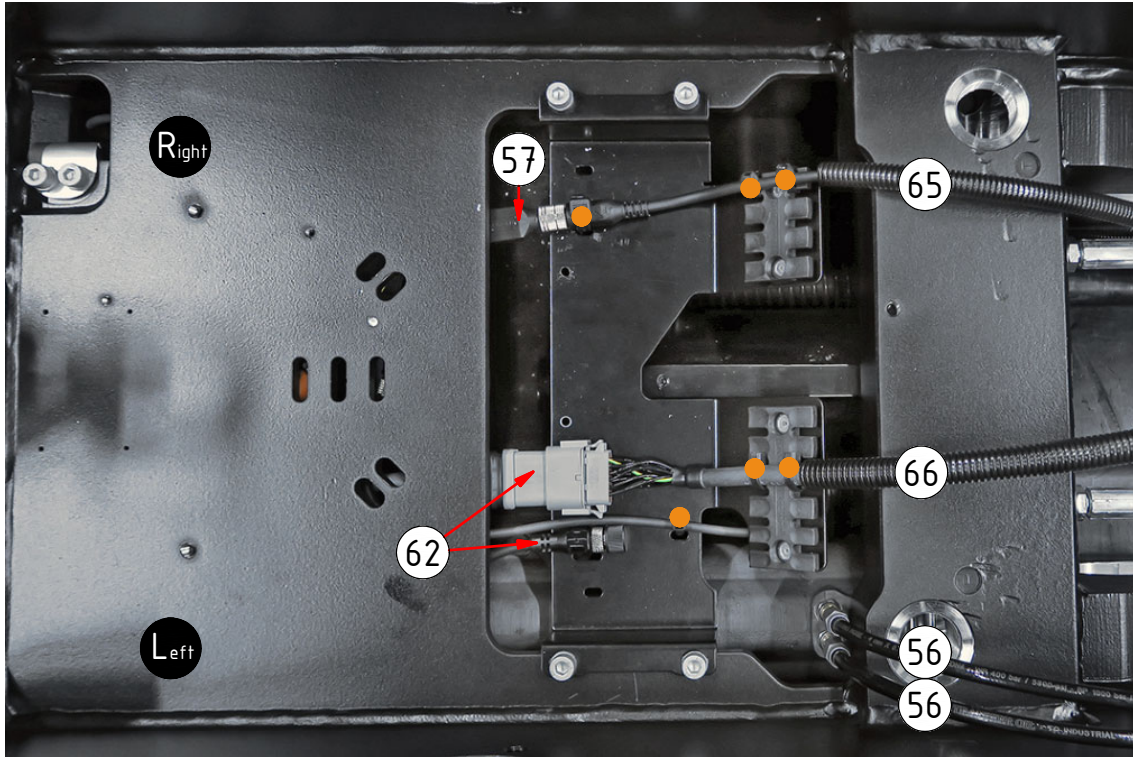


POS	DESCRIPTION	PART	QTY	COMMENTS
10	Screw K6S M5x10 10.9 FZB	6000408	3	QTY: 1 for DC2 1bl
11	Rubber steel clamp ø6	6000027	1	
12	Rubber steel clamp ø10	6000003	2	
38	Power plug ECO W Hitch (4P, 6P)	8002100	1	
56	Hose 2m - lubricant ECO	790176	1	
57	Y-split M12-8P->2x M12-4S QSM/S	8002139	1	Attach to QS sensors
58	Cable QS-QLM Machine hitch 3,4m	8002250	1	Attach to Y-split
59	Cable 3m ECO W DC3 (4S, 4P)	8002297	1	Attach to 4P
60	Dust protection for 4P	8002372	1	
63	Plug for 6P	8000620	1	
● Use cable ties				

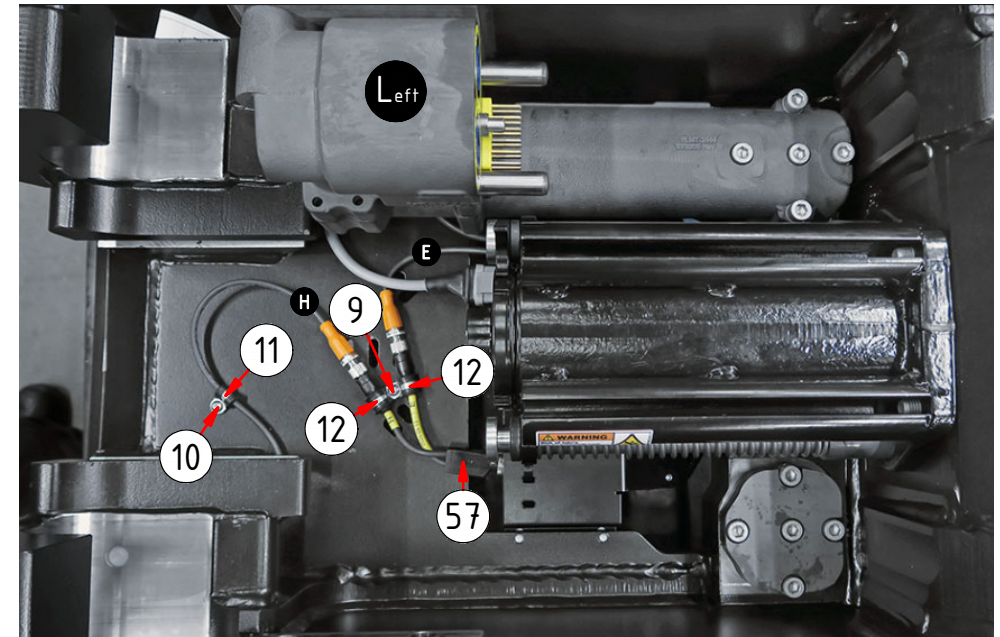
POS in order of assembly



DC2 Std. config.

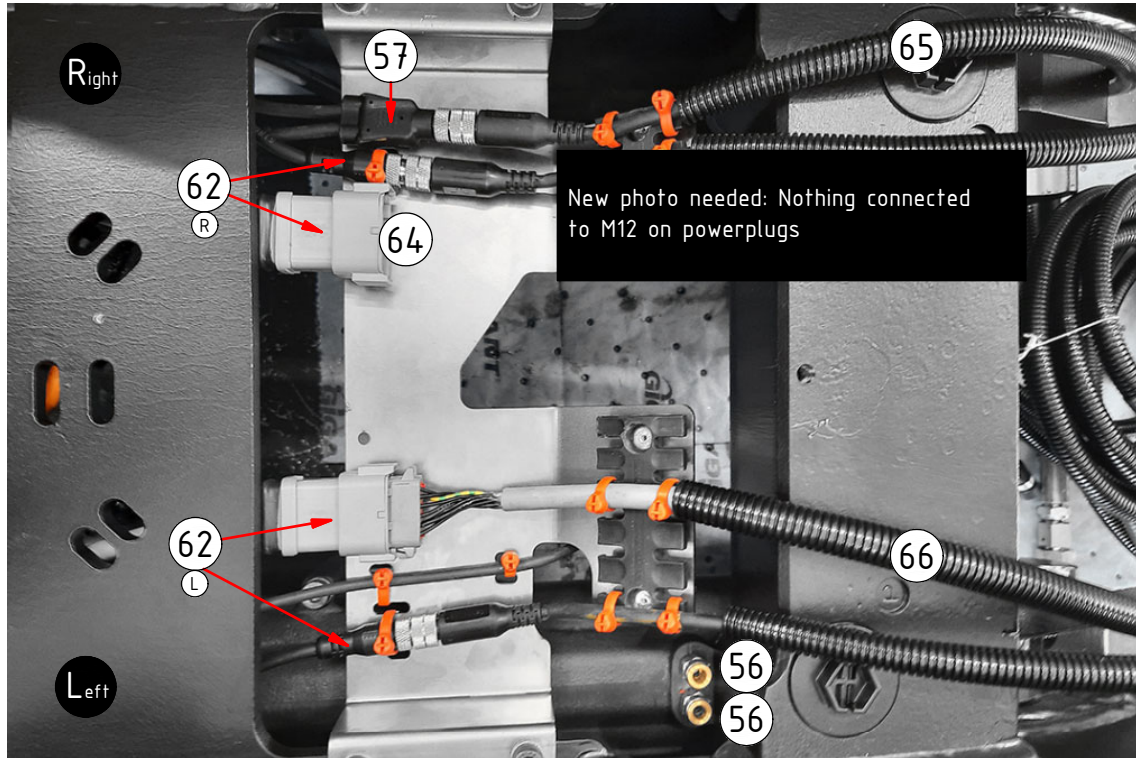


POS	DESCRIPTION	PART	QTY	COMMENTS
9	Screw K6S M5x16 10.9 FZB	611818	1	For DC2 1bl
10	Screw K6S M5x10 10.9 FZB	6000408	3	QTY: 1 for DC2 1bl
11	Rubber steel clamp ø6	6000027	1	
12	Rubber steel clamp ø10	6000003	2	
56	Hose 2m - lubricant ECO	790176	1	
57	Y-split M12-8P->2x M12-4S QSM/S	8002139	1	Attach to QS sensors
62	Power plug ECO W Hitch (12P, M12)	8002197	1	Cable gland torque: 6Nm
65	Cable QS-QLM Machinehitch 3,4m DC2	8002249	1	Attach to Y-split
66	Machine cable ECO70 W DC2	1048528	1	Attach to Left 12P
●	Use cable ties			



POS in order of assembly

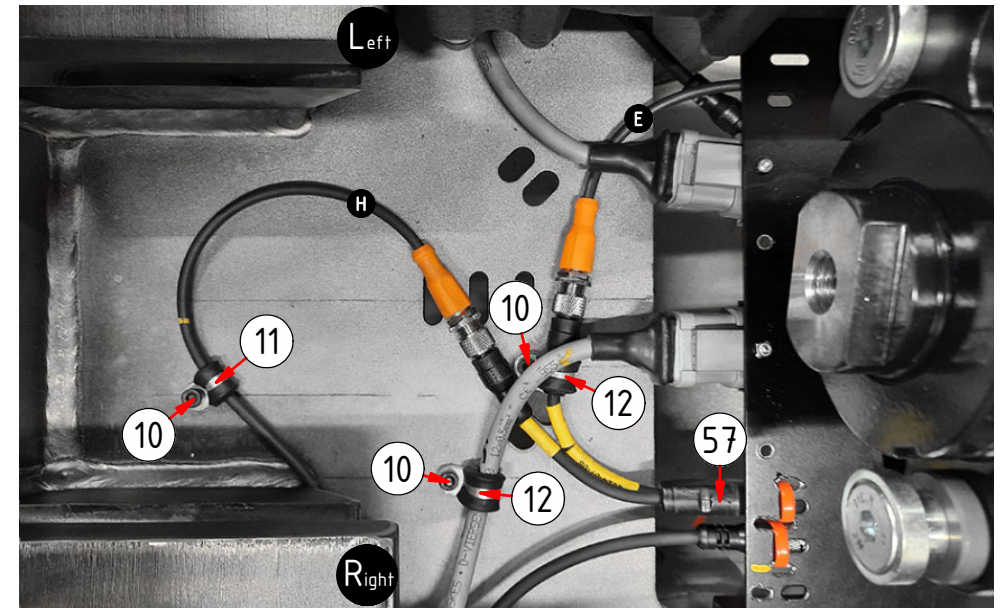
DC2 Option 2bl.



Option 5 hyd:

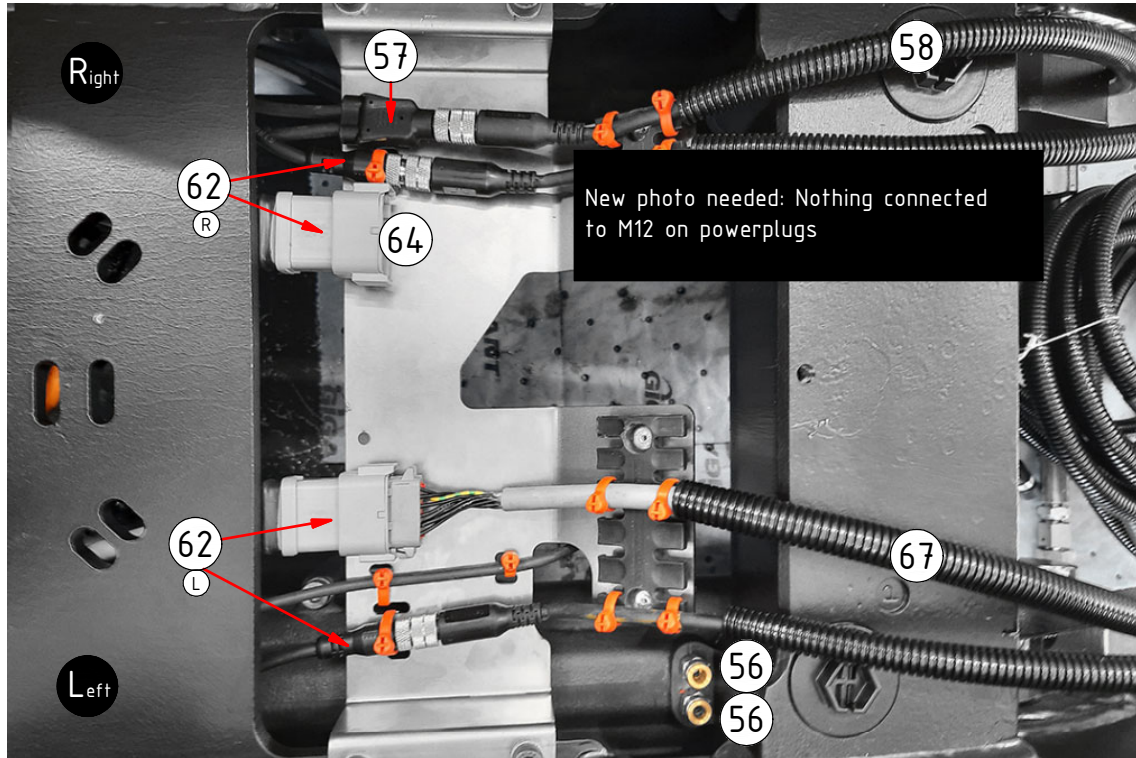
Photo needed: DC2 5hy seen from above

POS	DESCRIPTION	PART	QTY	COMMENTS
10	Screw K6S M5x10 10.9 FZB	60004.08	3	QTY: 1 for DC2 1bl
11	Rubber steel clamp ø6	6000027	1	
12	Rubber steel clamp ø10	6000003	2	
56	Hose 2m - lubricant ECO	790176	1	
57	Y-split M12-8P->2x M12-4S QSM/S	8002139	1	Attach to QS sensors
62	Power plug ECO W Hitch (12P, M12)	8002197	1	Cable gland torque: 6Nm
64	Plug for 12P	8002058	1	
65	Cable QS-QLM Machinehitch 3,4m DC2	8002249	1	Attach to Y-split
66	Machine cable ECO70 W DC2	1048528	1	Attach to Left 12P
●	Use cable ties			



POS in order of assembly

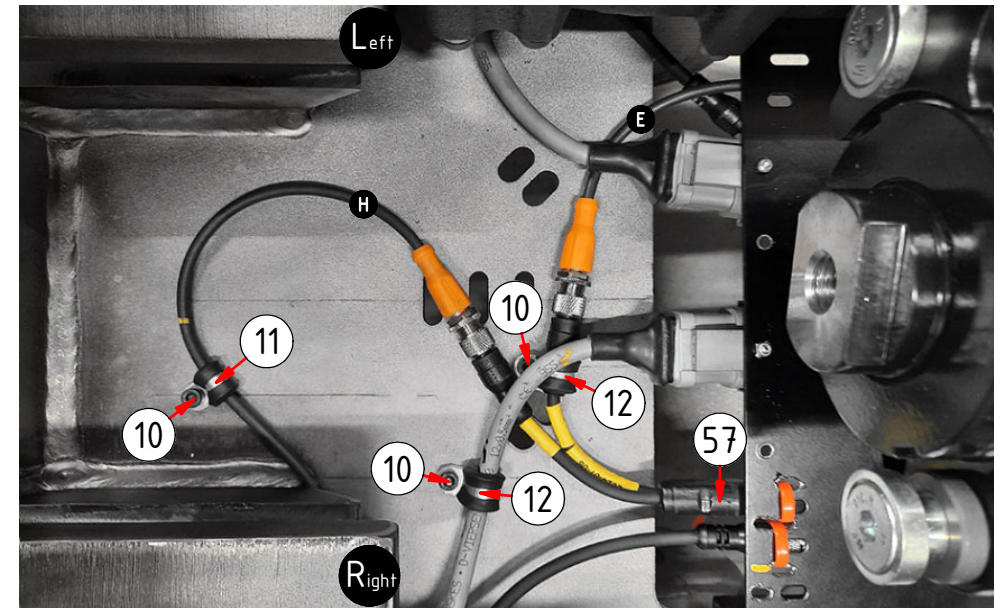
ss9



ePS:

Photo needed: ss9 ePS2 seen from above

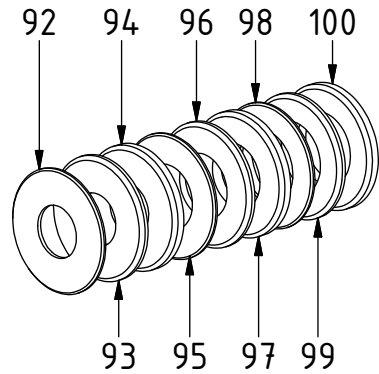
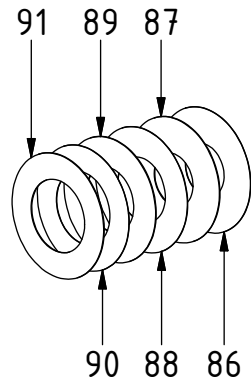
POS	DESCRIPTION	PART	QTY	COMMENTS
10	Screw K6S M5x10 10.9 FZB	60004.08	3	QTY: 1 for DC2 1bl
11	Rubber steel clamp ø6	6000027	1	
12	Rubber steel clamp ø10	6000003	2	
56	Hose 2m - lubricant ECO	790176	1	
57	Y-split M12-8P->2x M12-4S QSM/S	8002139	1	Attach to QS sensors
58	Cable QS-QLM Machine hitch 3,4m	8002250	1	Attach to Y-split
62	Power plug ECO W Hitch (12P, M12)	8002197	1	Cable gland torque: 6Nm
64	Plug for 12P	8002058	1	
67	Machinecable ECO70W ss9-2 (1x 12P)	1036846	1	Attach to Left 12P
80	Cable ePS ECO W ss9	8002458	1	
● Use cable ties				



POS in order of assembly

SPARE PARTS

SHIMS:



POS	DESCRIPTION	PART	QTY	COMMENTS
86	Shim Ø156/66x0,5 S70	1077559	1	
87	Shim Ø156/66x1 S70	1077560	1	
88	Shim Ø156/81x0,5 S70	1077561	1	
89	Shim Ø156/81x1 S70	1077564	1	
90	Shim Ø156/91x0,5 S70	1077565	1	
91	Shim Ø156/91x1 S70	1077566	1	
92	Shim 156/66 - 5	1075285	1	
93	Shim 156/66 - 10	1075281	1	
94	Shim 156/66 - 15	1075288	1	
95	Shim 156/81 - 5	1075286	1	
96	Shim 156/81 - 10	1075282	1	
97	Shim 156/81 - 15	1075289	1	
98	Shim 156/91 - 5	1075287	1	
99	Shim 156/91 - 10	1075283	1	
100	Shim 156/91 - 15	1075290	1	

POS in order of assembly