

ePS1 Sensor COVERSHEET

Planned document changes:


Briefly:

No planned changes.

Document changes:

Date:	Change:	Rev. after change:
2024-04-15	New document.	-

Readers note:

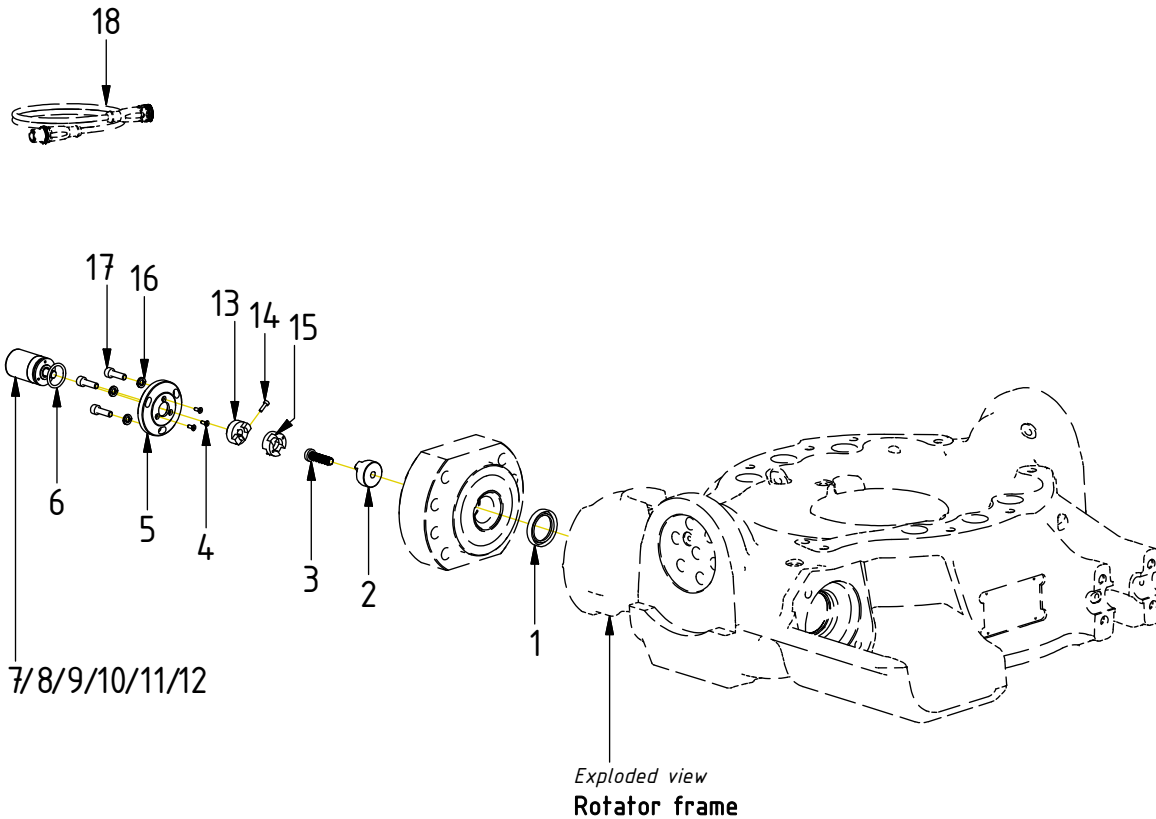
 Indicates instruction.

 Represents Hose.

Dashed lines for overview, mounts
on other pages/assemblies.

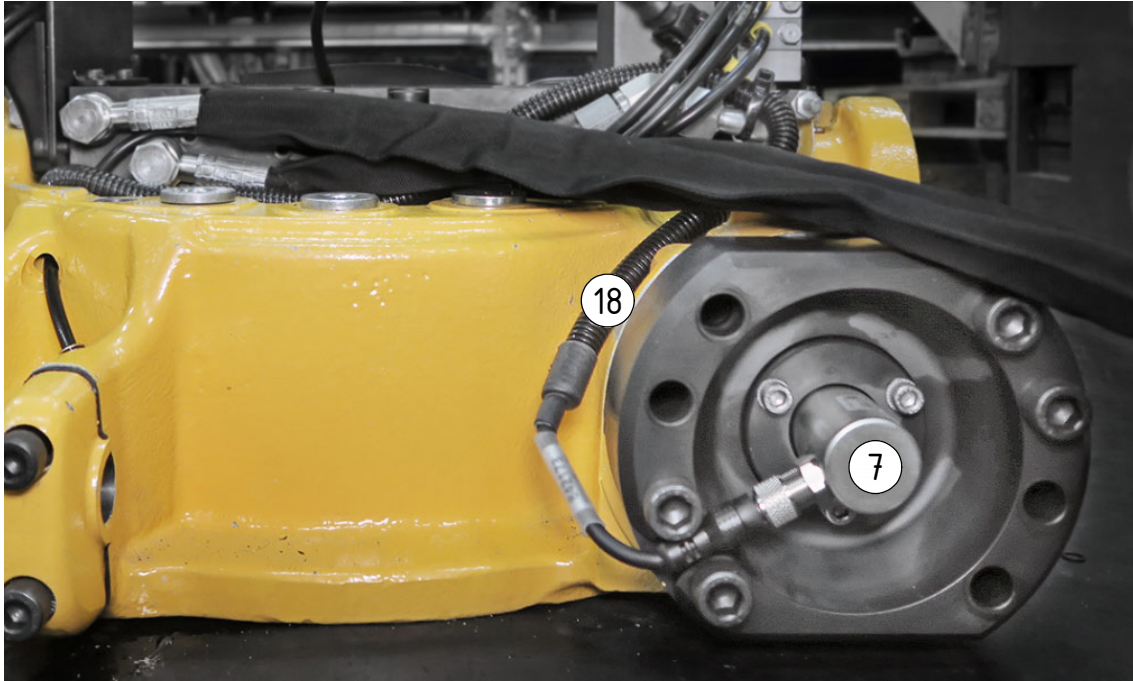
EC209-EC233, EC30

POS	DESCRIPTION	PART	QTY	COMMENTS
1	Seal 28x40x6 BABSL NBR	7000015	1	Face flange toward worm screw
2	Carrier PS	1016550	1	
3	Screw TX45 M8x30 FZB 10,9	612201	1	Loxéal 83-52 against carrier, loxéal 55-02 against worm screw Torque: 34Nm
4	Screw MFT-3x10TX	6000005	3	Loxéal 55-02
5	Attachment flange PS	1016586	1	
6	O-ring 21,89x2,62	712413	1	
7	EC209PS Rotation sensor	1030909	1	
8	EC214PS Rotation sensor	1030910	1	
9	EC219PS Rotation sensor	1030911	1	
10	EC226PS Rotation sensor	1030912	1	
11	EC233PS Rotation sensor	1041392	1	
12	EC30PS Rotation sensor	1030913	1	
13	Hub rotation sensor MOS-25C-8	8000017	1	Distance 1mm to attachment flange
14	Locking screw	N/A	1	Torque: 2Nm
15	Spacer 6,35x6,35 rot. sensor PS	8000018	1	
16	Washer NL 6mm	611039	3	
17	Screw MC6S M6x20 A4-80	611513	3	
18	Adapter cable ePS rotation sensor	8000784	1	Part of Control system



POS in order of assembly

EC209:



POS	DESCRIPTION	PART	QTY	COMMENTS
7	EC209PS Rotation sensor	1030909	1	
8	EC214PS Rotation sensor	1030910	1	
9	EC219PS Rotation sensor	1030911	1	
10	EC226PS Rotation sensor	1030912	1	
11	EC233PS Rotation sensor	1041392	1	
12	EC30PS Rotation sensor	1030913	1	
18	Adapter cable ePS rotation sensor	8000784	1	Part of Control system

EC30:



EC214-EC233:

