

TG42HD
COVERSHEET

Planned document changes:

Briefly:

No planned changes.

Document changes:

Date:	Change:	Rev. after change:
2023-12-11	EC-Oil added. Document no corrected.	D
2021-02-04	Photos added.	C
2020-04-02	Coversheet added.	B

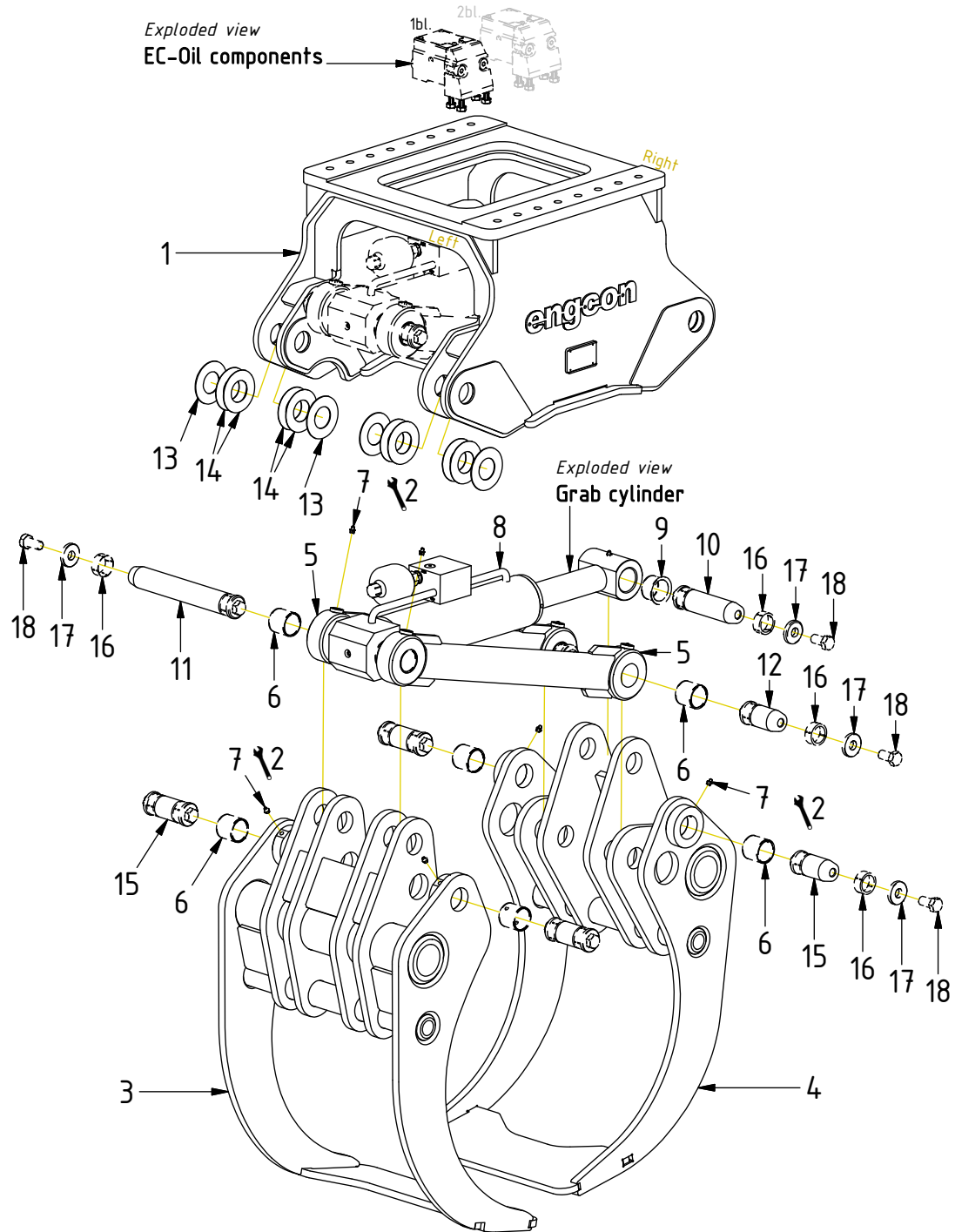
Readers note:

Indicates instruction.



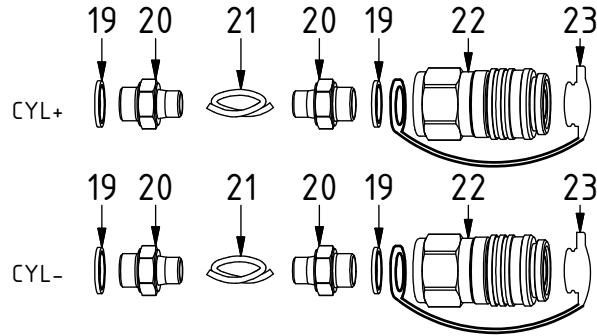
Represents Hose.

Dashed lines for overview, mounts
on other pages/assemblies.

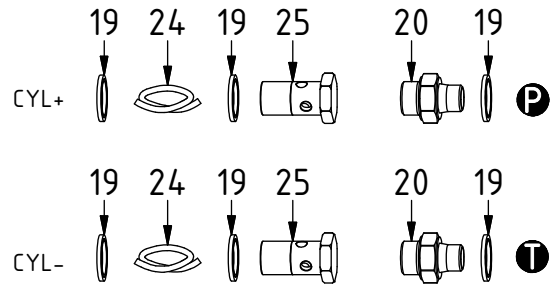


POS	DESCRIPTION	PART	QTY	COMMENTS
1	Main frame TG42	1034778	1	
2	Fill lubrication points with grease			
3	Arm wide TG42	1034821	1	(POS.6-7 incl.)
4	Arm narrow TG42	1034822	1	(POS.6-7 incl.)
5	Link TG42	1034836	2	(POS.6-7 incl.)
6	Bushing WB802 50/55x50	630308	1	
7	Grease nippel H1 M10x1	790166	2	
8	Cylinder TG42	1031740	1	
9	Bushing 50/55/65x37,5	630403	4	
10	Expander axle TG42 L=170mm	1034856	1	(POS.16-18 incl.)
11	Expander axle TG42 L=318mm	1034854	1	(POS.16-18 incl.)
12	Expander axle L=94mm TG42	1034866	2	(POS.16-18 incl.)
13	Shim 100/51x2	1024935	8	Use if required
14	Shim 100/51x1.0	1024934	16	Use if required
15	Expander axle TG42 L=98mm	1034844	4	(POS.16-18 incl.)
16	Sleeve	1034846	16	
17	Washer	1034855	16	
18	Bolt M20x1.5 L=40mm 12.9 DIN 933	1034847	16	Torque: 350Nm

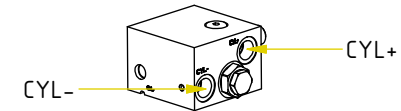
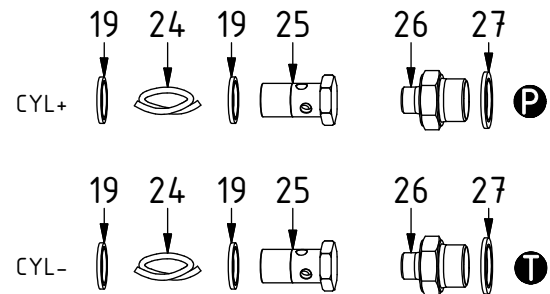
POS	DESCRIPTION	PART	QTY	COMMENTS
19	Washer GBR08 1/2	710704	4	QTY: 6 for ECO60
20	Adapter 135-06-08	710122	4	QTY: 2 for ECO60
21	Hose Cylinder	740910	2	
22	Quick coupler 1/2" female	790114	2	
23	Dust protection 1/2" female	790118	2	
24	Hose EC-Oil	740702	2	
25	Banjo bolt 4451-08 (1/2")	710274	2	
26	Adapter 135-06-12 (3/8"-3/4")	710107	2	
27	Washer GBR12 3/4	710706	2	



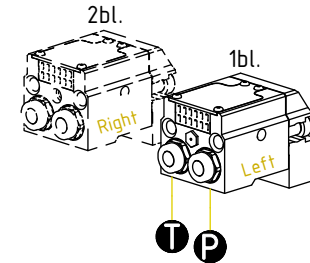
ECO60 W:



ECO70 W:



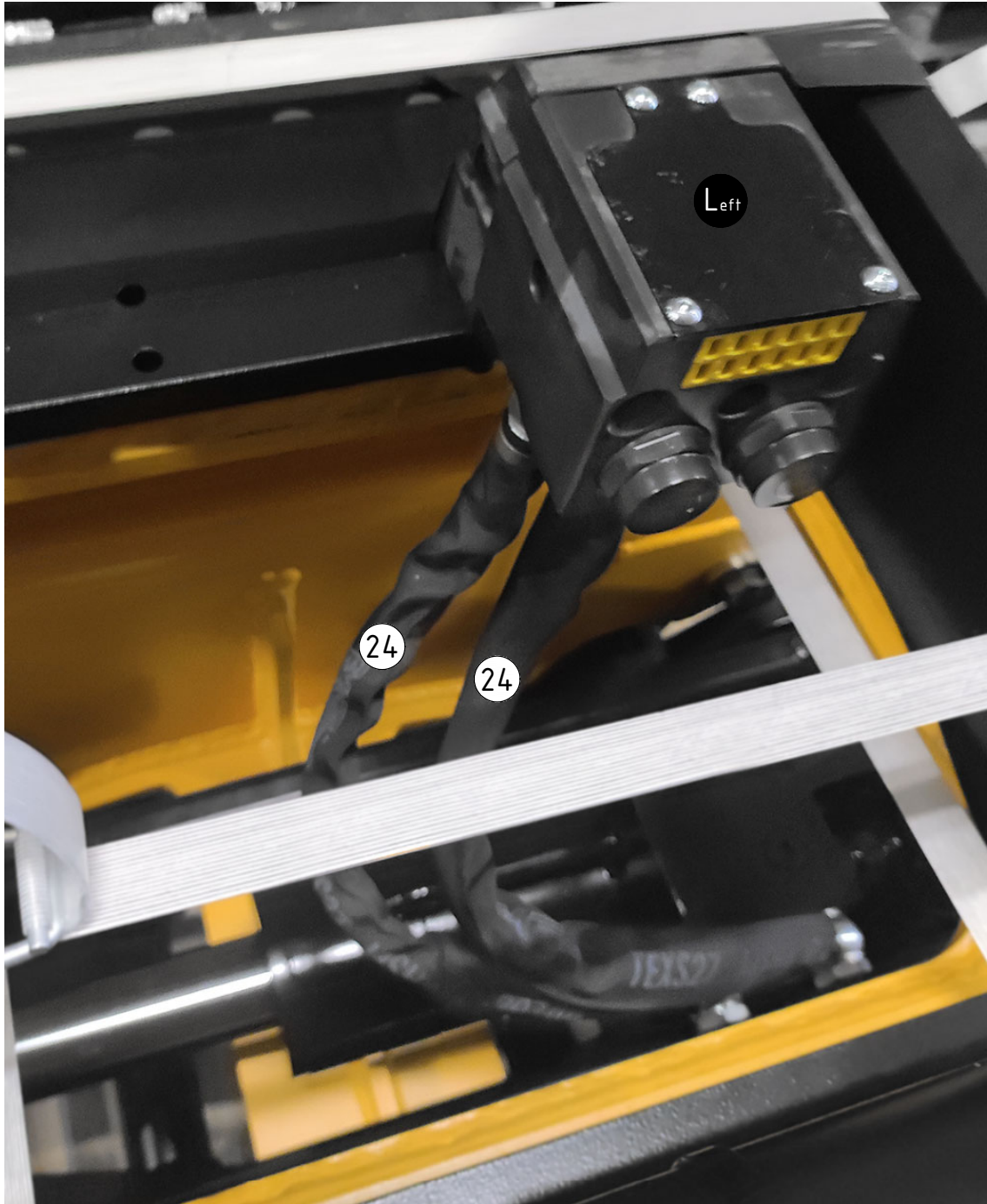
EC-Oil:



ECO w:

POS	DESCRIPTION	PART	QTY	COMMENTS
21	Hose Cylinder	740910	2	
24	Hose EC-Oil	740702	2	

POS in order of assembly



Without ECO:

