

Planned document changes:

Briefly:

No planned changes.

Document changes:

Date:	Change:	Rev. after change:
2024-07-01	Screw quality updated.	B
2022-11-21	Deutsch holder for QS added.	A
2022-11-09	New document.	-

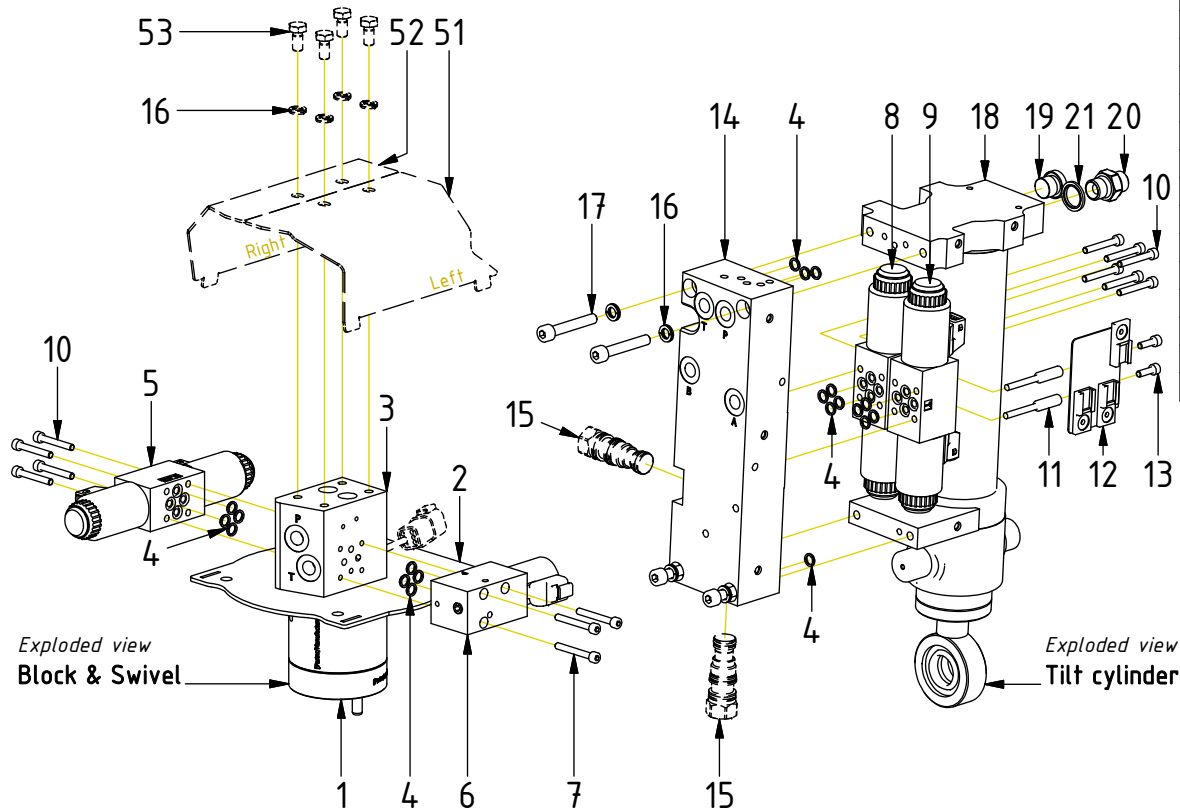
Readers note:

Indicates instruction.



Represents Hose.

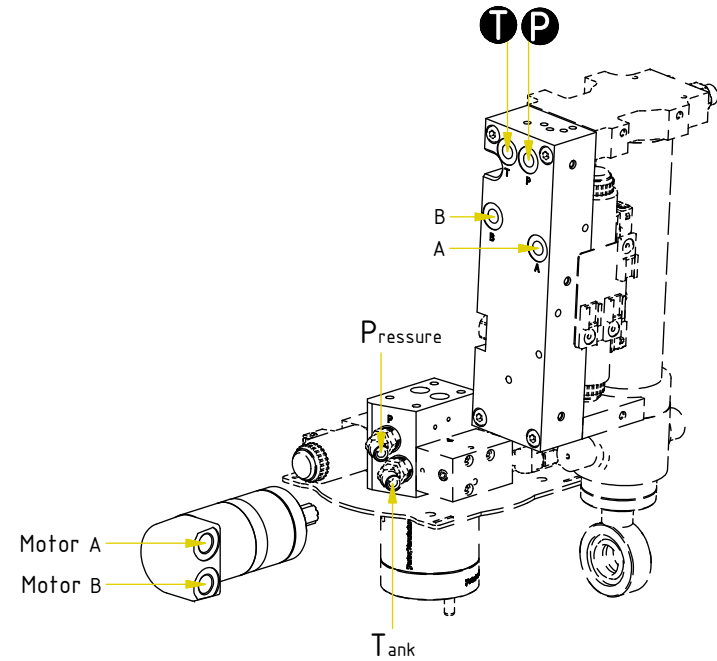
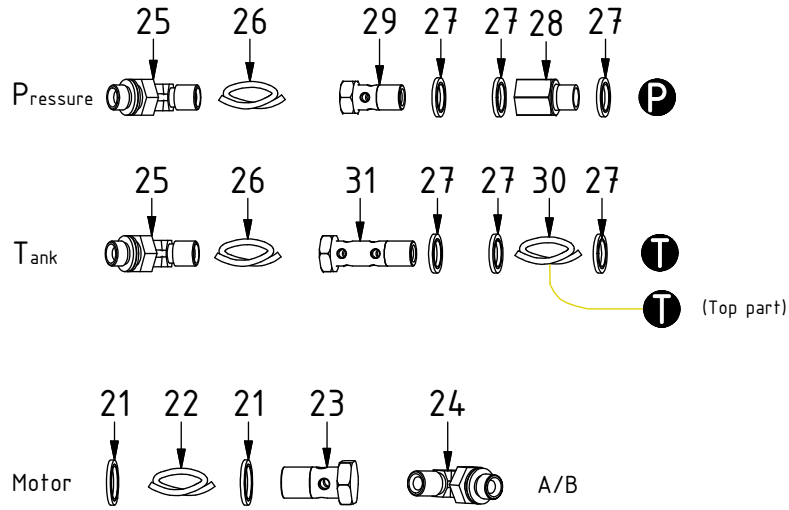
Dashed lines for overview, mounts
on other pages/assemblies.



POS	DESCRIPTION	PART	QTY	COMMENTS
1	Swivel w. connection block Complete	1063530	1	
2	Valve plate EC02B	1064866	1	
3	Valve block EC02 S30S	1065632	1	
4	O-ring 7,65x1,78	710960	20	
5	Directional valve NG4 12V DT	7000099	1	(POS.4 incl.)
6	Directional valve NG4 IQS 12V DT	1042047	1	(POS.4 incl.)
7	Screw MC6S M5x40 12.9	610405	3	Torque: 9,7Nm
8	Direct. valve NG4 Prop Tilt 12V DT	7000100	1	(POS.4 incl.)
9	Direct. valve NG4 Prop Rot 12V DT	7000103	1	(POS.4 incl.)
10	Screw MC6S M5x35 12.9	610404	10	Torque: 9,7Nm
11	Valve spacer M5x35	1054687	2	Torque: 9,7Nm
12	Connector plate Rot.valve NG4	1069580	1	
13	Screw MC6S M5x16 12.9	610401	2	
14	Valve block tilt cylinder Complete	7000635	1	(POS.15 incl.)
15	Overcenter valve CBCHXXN41-47Nm	7000647	2	
16	Washer NL 8mm	611040	8	QTY: 4 part of make up
17	Screw MC6S M8x50 12.9	610439	4	
18	Tilt cylinder EC02B	1053601	1	Part of top part
19	Plug 70125-06 (3/8")	711504	1	
20	Adapter 136-06-06 (3/8")	710106	1	
21	Washer GBR06 3/8	710703	5	
51	Protective cover EC02B Left	1064868	1	Part of make up
52	Protective cover EC02B Right	1064867	1	Part of make up
53	Screw M6S M8x16 8,8 FZB	610122	4	Part of make up

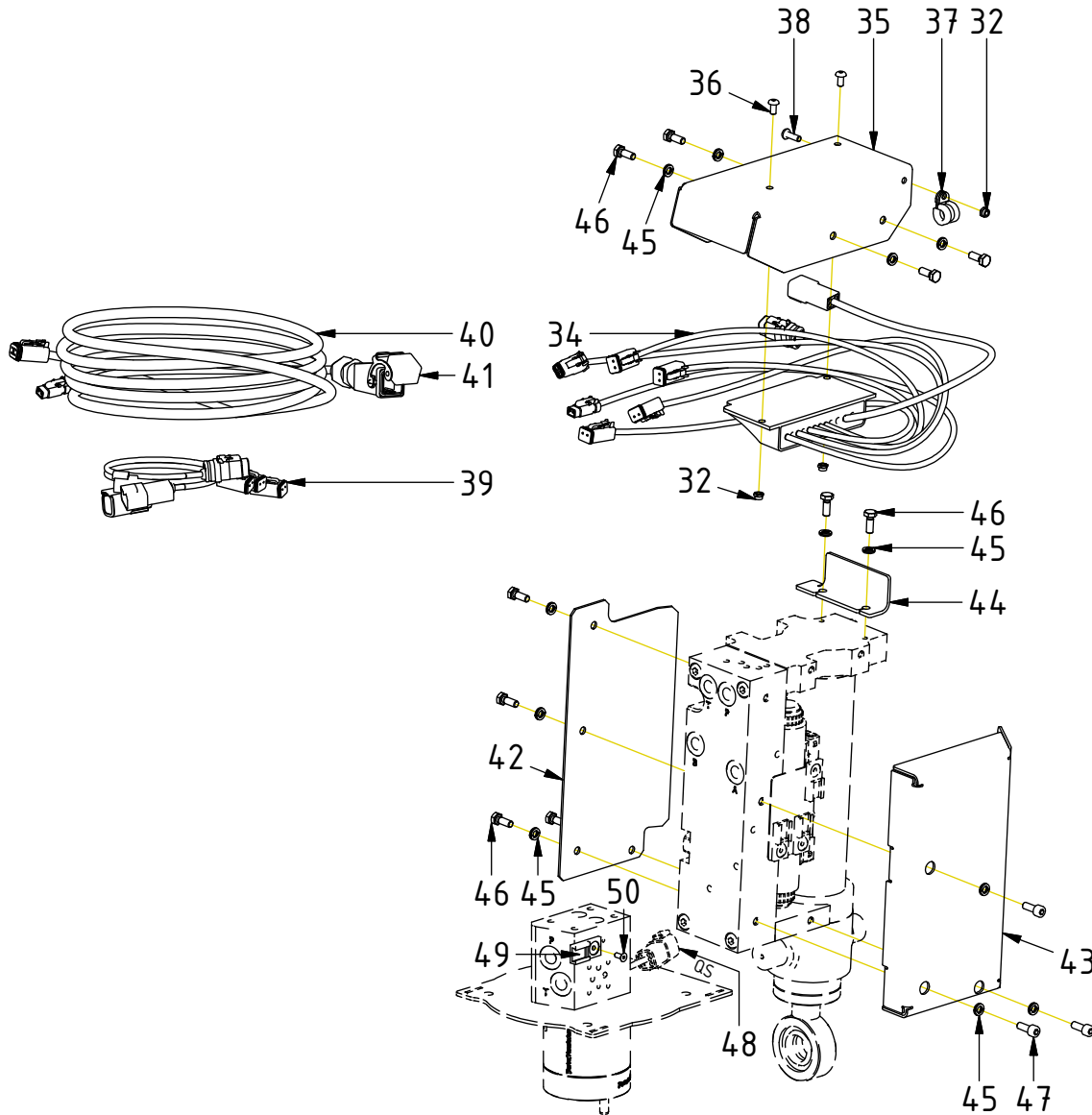
Hoses

POS	DESCRIPTION	PART	QTY	COMMENTS
21	Washer GBR06 3/8	710703	5	
22	Hose hydraulic motor	7001707	2	
23	Banjobolt	710272	2	
24	Adapter 401-04-04 90° (1/4")	710151	2	
25	Adapter 402-04-04 45° (1/4")	7000104	2	
26	Hose Feed (block)	7001708	2	
27	Washer GBR04 1/4	710702	6	
28	Adapter 236-04-04 (1/4")	1013885	1	
29	Banjo bolt 4451-04 (1/4")	710271	1	
30	Hose Feed T	7000584	1	
31	Banjo bolt extended 4450-04 (1/4")	712214	1	



POS in order of assembly

Cables



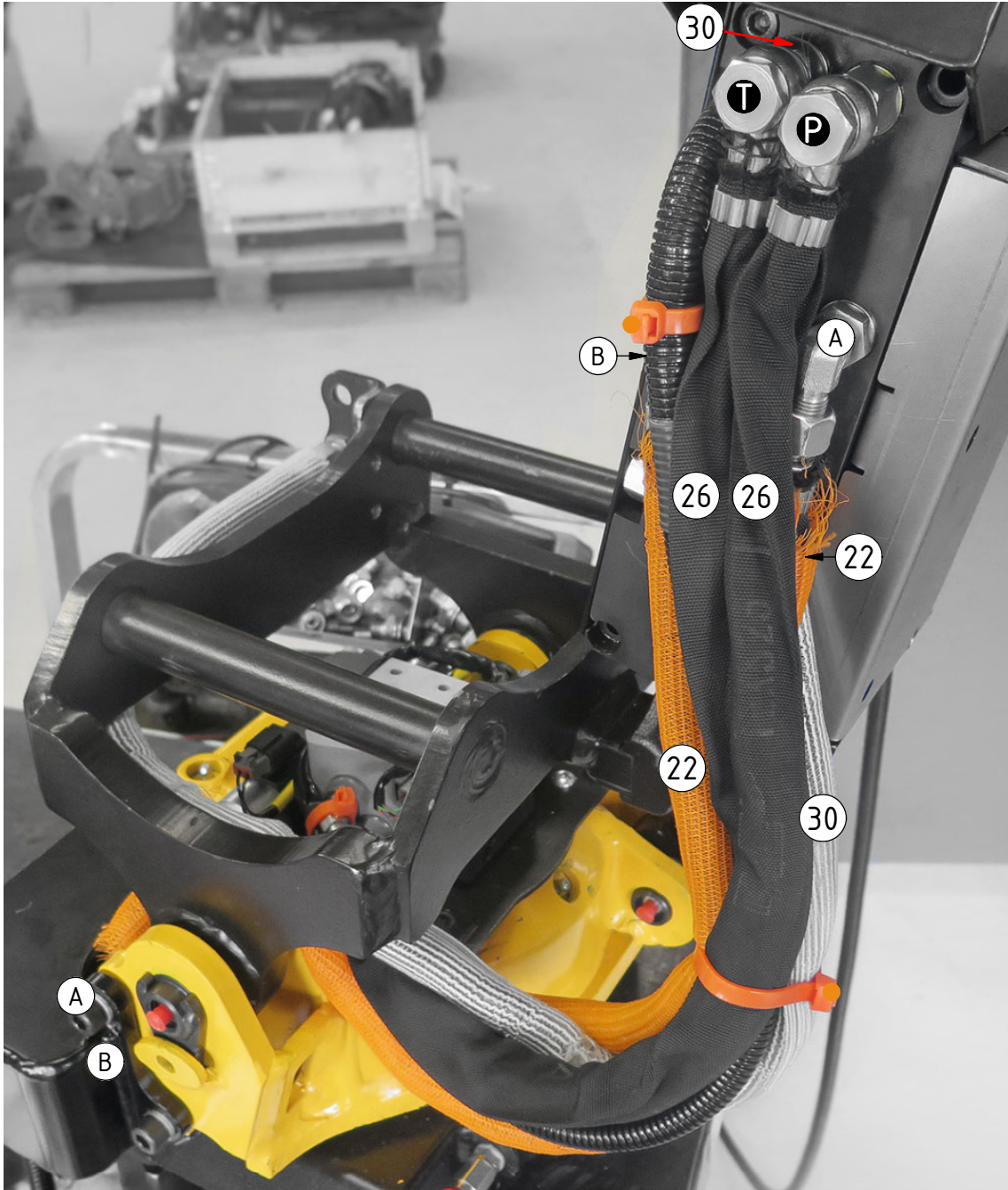
POS	DESCRIPTION	PART	QTY	COMMENTS
32	Lock Nut M6M M5x0,8 8,8 FZB	610920	3	
33	Jumper DTM QSC connected	8001229	1	Plug DTM connector "1"
34	Tiltrotator module EC02B DC2	8001385	1	
35	Cover tilt cylinder Top	1029902	1	
36	Screw K6S M5x10 10.9 FZB	6000408	2	
37	Rubber steel clamp ø10	6000003	1	
38	Screw K6S M5x16 10.9 FZB	611818	1	
39	Joint cable EC02B	8001373	1	(Joint to valves)
40	Aggregate cable DC2 Complete QSC	8000763	1	
41	ILME cover 12P contact with jumper	810208	1	(Incl. with agg.cable)
42	Cover tilt cylinder Right	1029781	1	
43	Cover tilt cylinder Left	1068975	1	
44	Coverplate	1029826	1	
45	Washer NL 6mm	611039	13	
46	Screw M6S M6x16 10.9 untreated	610109	10	
47	Screw MC6S M6x16 12.9 ZFSHL	6000017	3	
48	Only for QS, connector			
49	Holder Deutsch connector	810662	1	
50	Screw MF6S M4x10 10.9 untreated	610605	1	

POS in order of assembly

Hoses

POS	DESCRIPTION	PART	QTY	COMMENTS
22	Hose hydraulic motor	7001707	2	
26	Hose Feed (block)	7001708	2	
30	Hose Feed T	7000584	1	
	● Use cable ties			

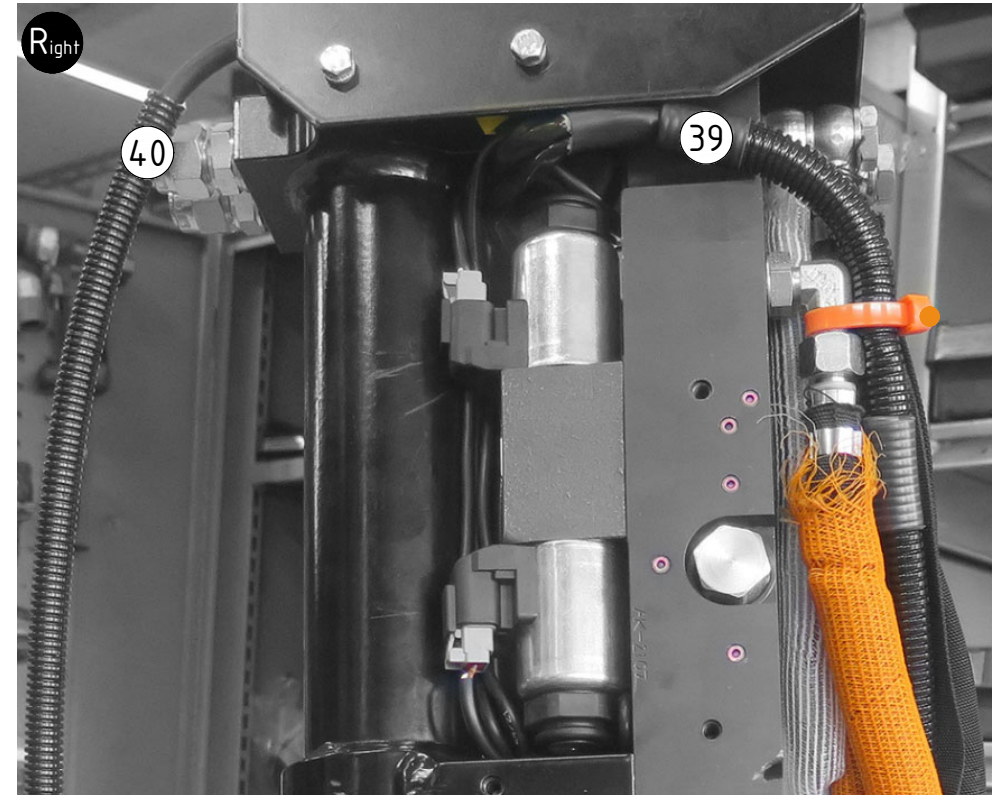
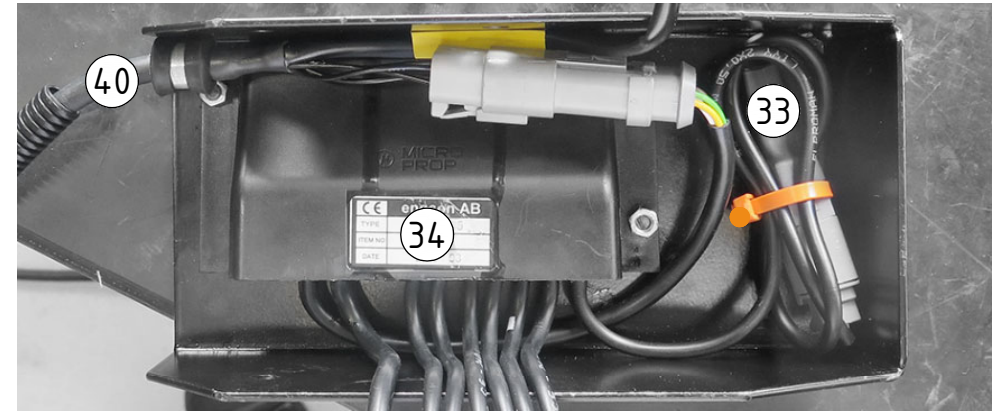
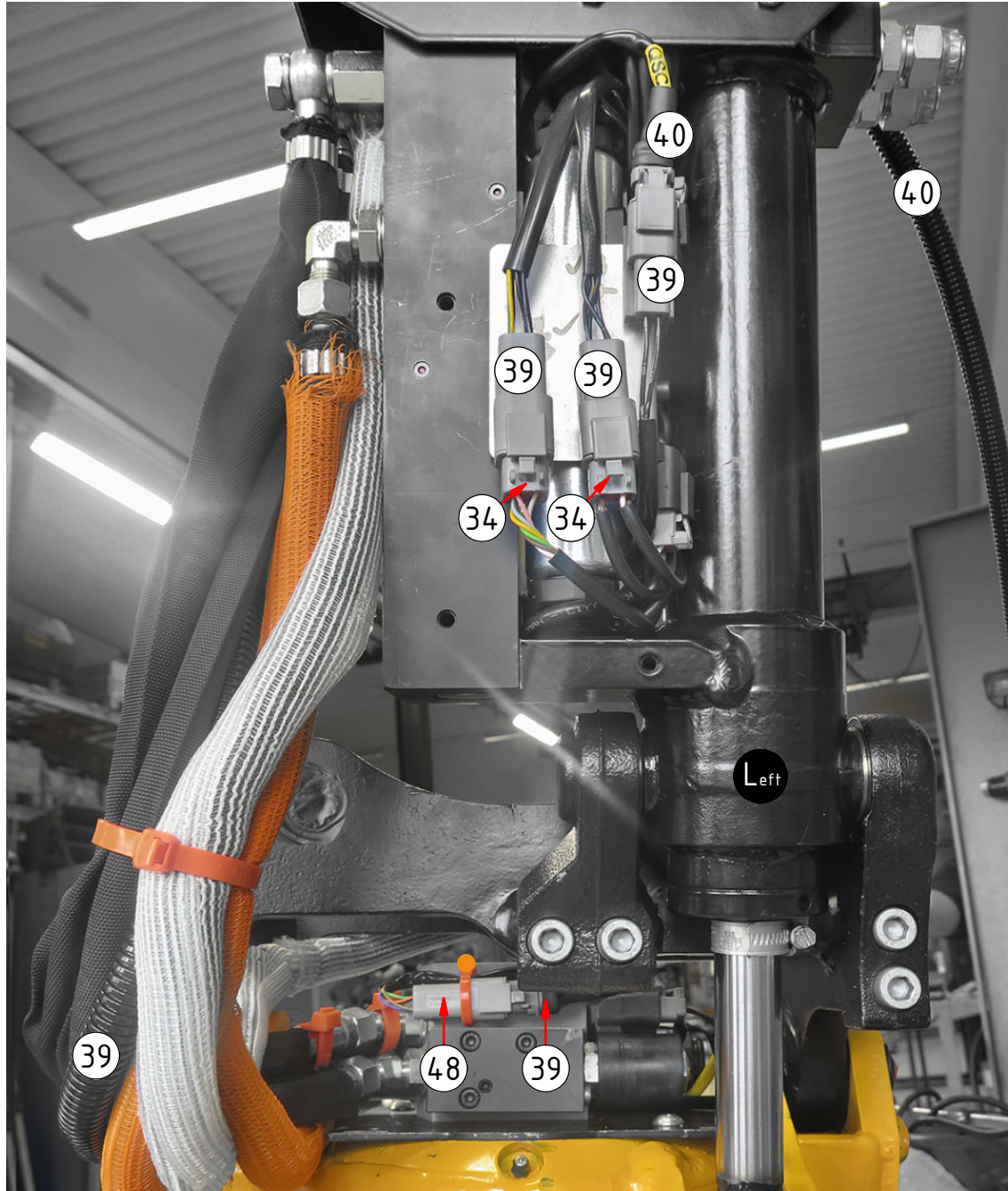
POS in order of assembly



Cables

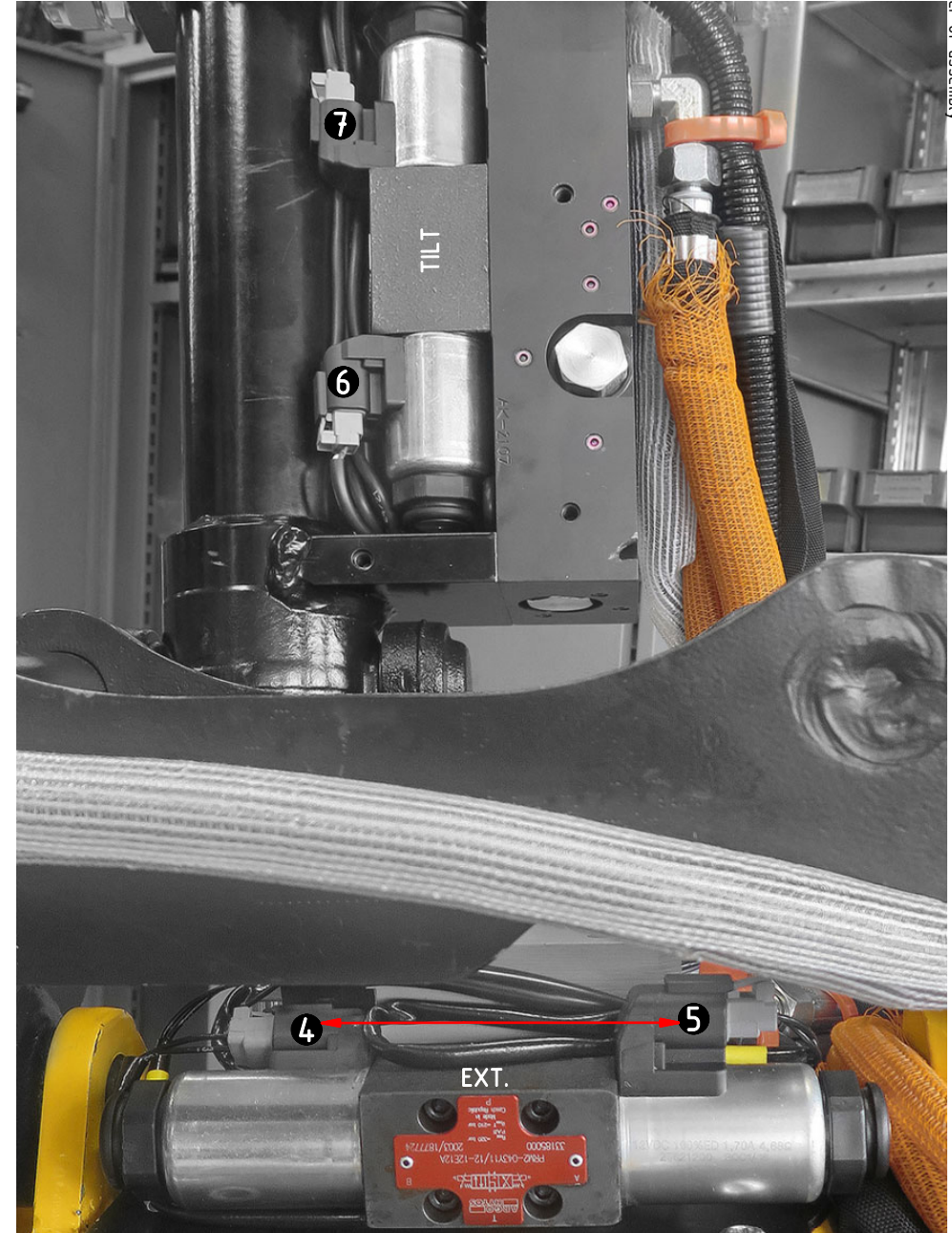
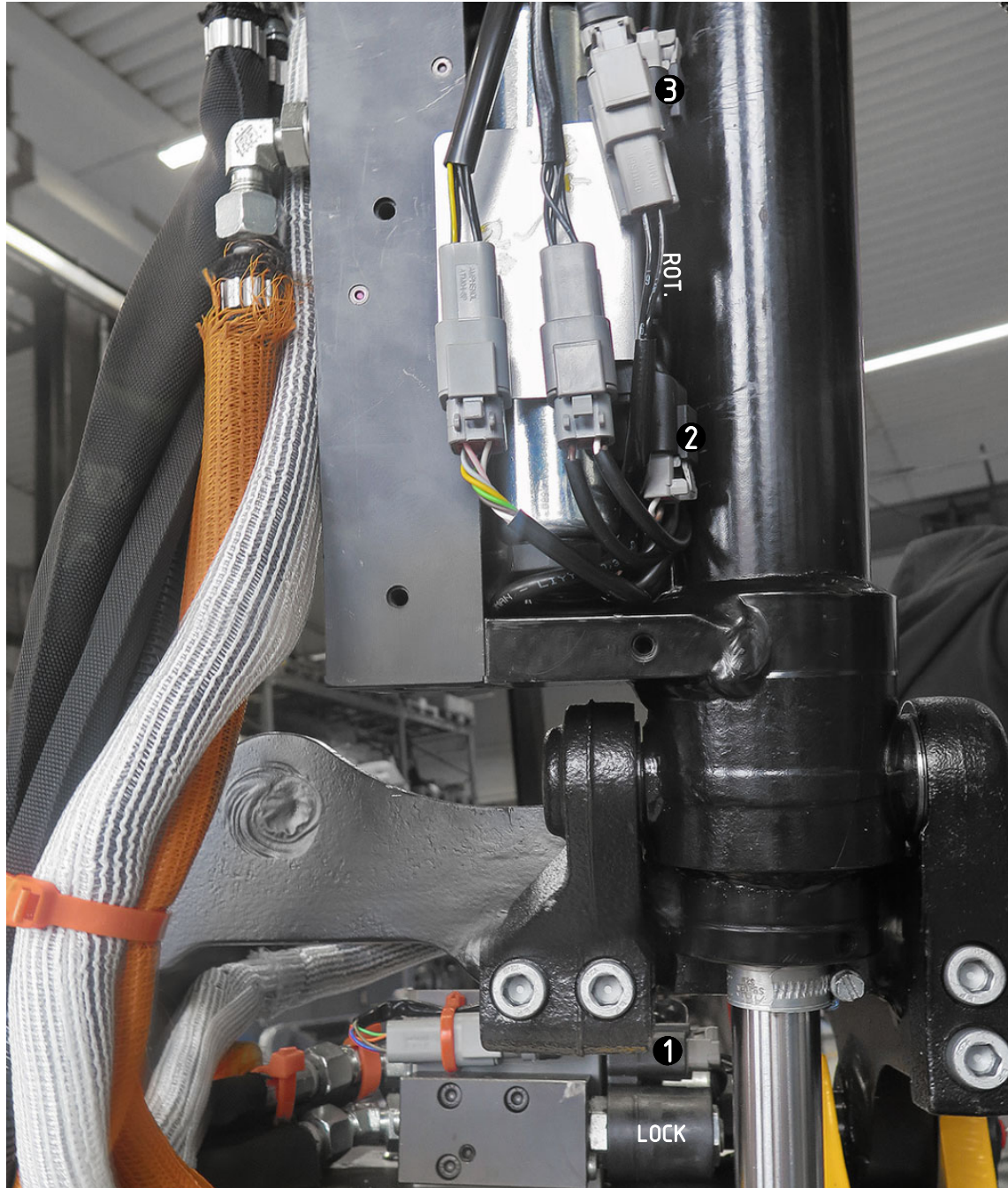
POS	DESCRIPTION	PART	QTY	COMMENTS
33	Jumper DTM QSC connected	8001229	1	Plug DTM connector "1"
34	Tiltrotator module EC02B DC2	8001385	1	
39	Joint cable EC02B	8001373	1	(Joint to valves)
40	Aggregate cable DC2 Complete QSC	8000763	1	
48	Only for QS, connector			
	● Use cable ties			

POS in order of assembly



Valves

POS	DESCRIPTION	PART	QTY	COMMENTS
-----	-------------	------	-----	----------



4 & 5 switches place when NOT equipped to hold a grab adapter or grab cassette.