

COVERSHEET

Planned document changes:

Briefly:

2024-11-15. Add to POS.5: Torque: 79Nm.

Document changes:

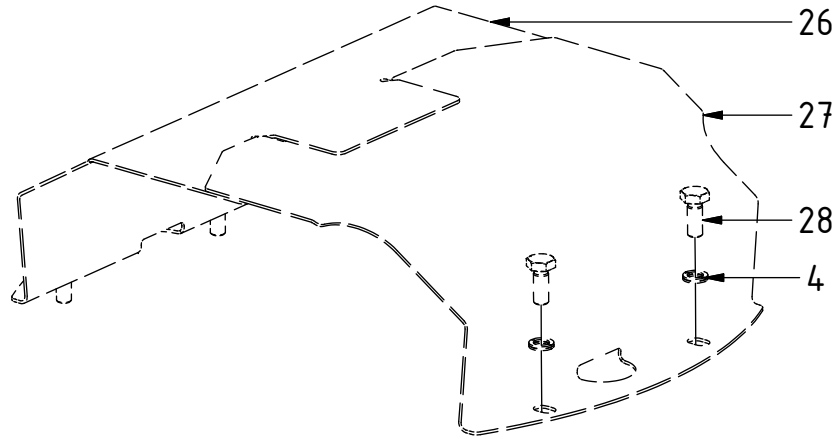
Date: **Change:**

2022-04-28 New instruction.

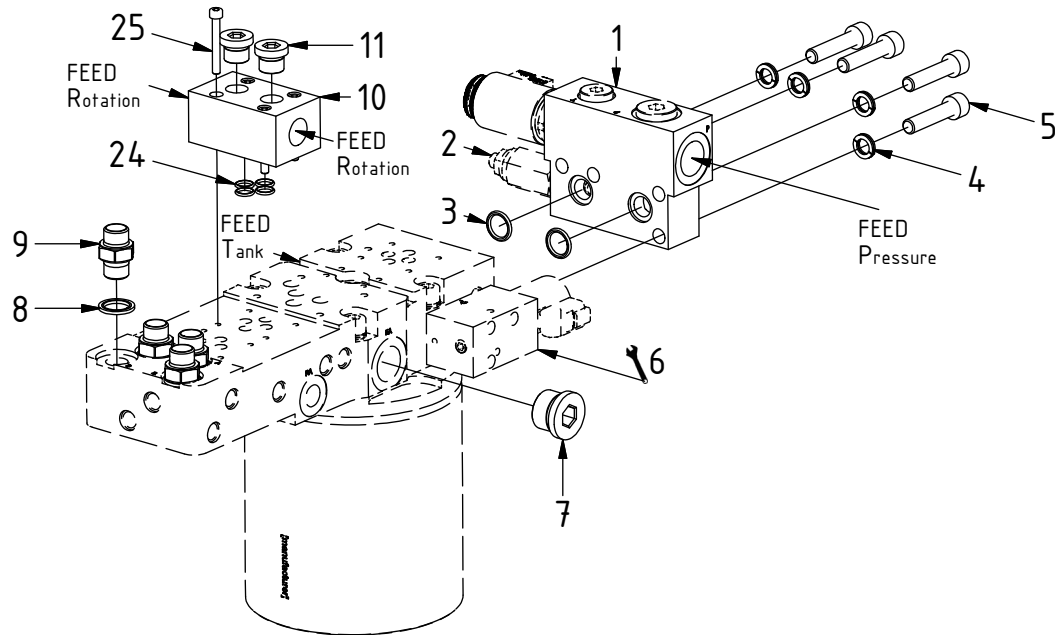
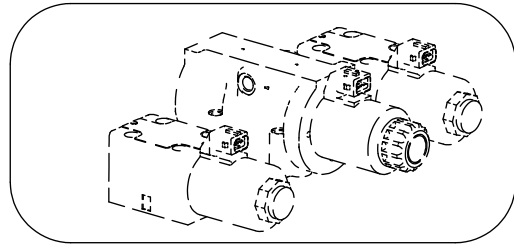
**Rev.
after change:**

-

EC233 QSM - ss9IQ Hoses



POS	DESCRIPTION	PART	QTY	COMMENTS
1	Connection block P reducer +Dump	1027707	1	(Dump & POS.2 included)
2	Dual relief valve 1CLR100	730287	1	
3	O-ring 15,54x2,62	712423	2	
4	Washer NL 10mm	611041	12	QTY: 4 part of make up
5	MC6S M10x45 12.9	610589	4	
6	Mount before adapters and feed hoses			See "Std Valves & cables"
7	Plug 70125-12 (3/4")	711532	2	Torque: 120Nm
8	Washer GBR06 3/8	710703	4	
9	Adapter 136-06-06 (3/8")	710106	4	
10	Connection block 2x1/2" NG6	405670	1	
11	Plug 3/8"	711504	2	
24	O-ring 9,25x1,78	710901	4	
25	MC6S M5x40 12.9	610405	4	Torque: 9,7Nm
26	Valve cover EC233 right	1040946	1	Part of make up
27	Valve cover EC233 left	1040947	1	Part of make up
28	M6S M10x25 8,8 FZB	610142	4	Part of make up

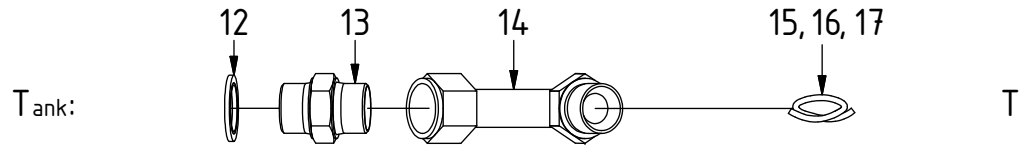
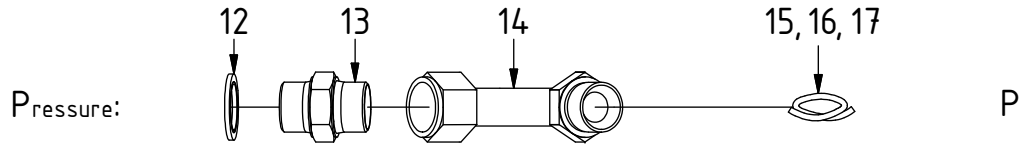


EC233 QSM - ss9IQ Hoses

POS in order of assembly

3/4" (Std)

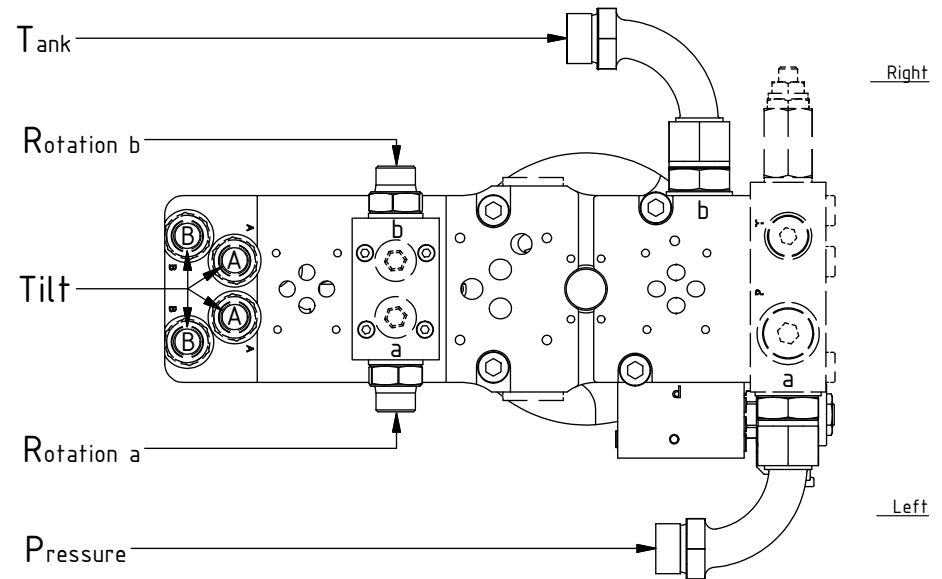
FEED



TILT

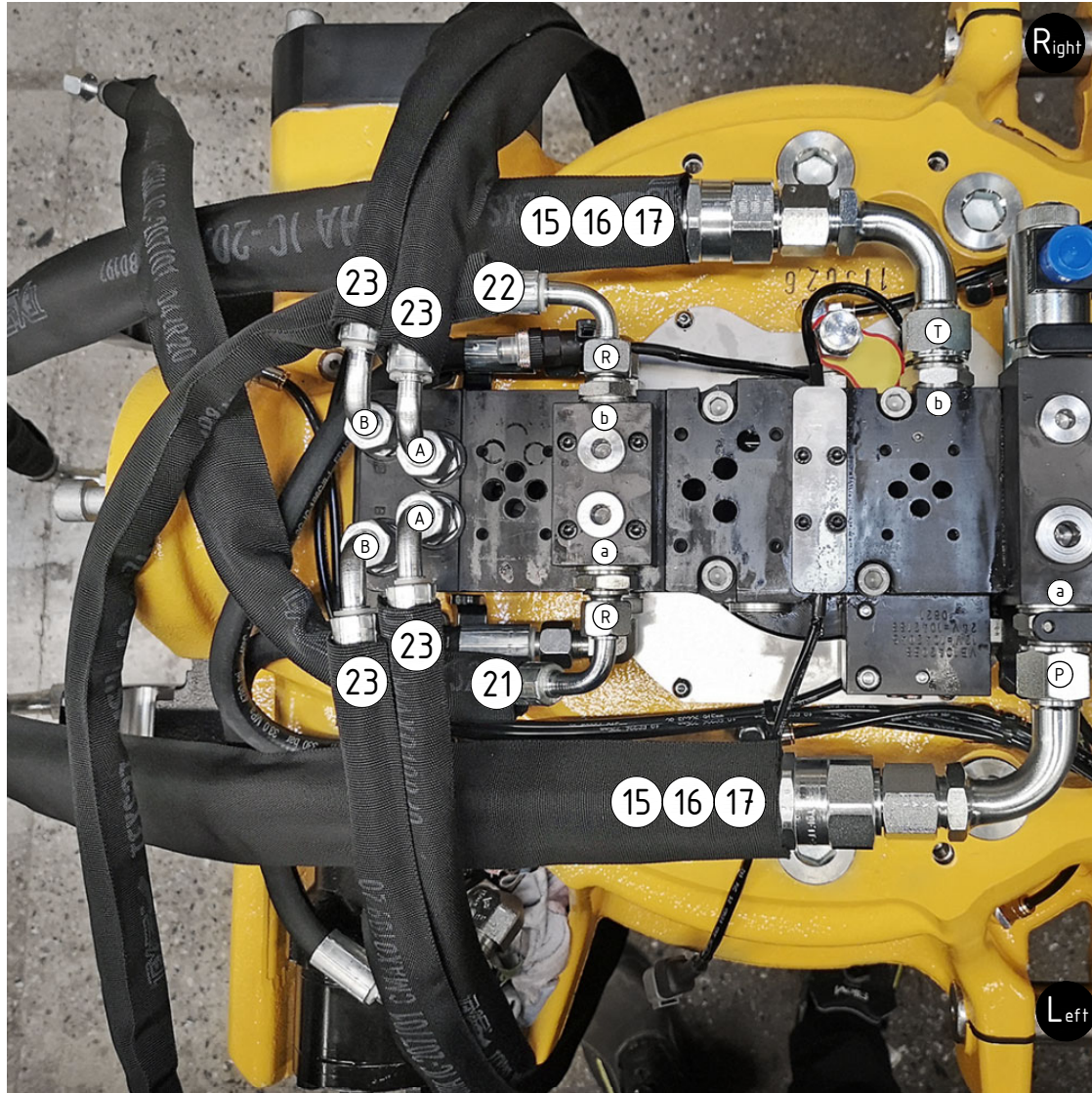


POS	DESCRIPTION	PART	QTY	COMMENTS
8	Washer GBR06 3/8	710703	4	
9	Adapter 136-06-06 (3/8")	710106	4	
12	Washer GBR12 3/4	710706	2	
13	Adapter 136-12-12 (3/4")	710126	2	
14	Adapter 488-12-12 90° (3/4")	7000059	2	
15	Hose Feed - QS70, QS80	7000454	2	QTY: 1 for Feed Right/Left
16	Hose Feed Right/Left - QS70, QS80	7000455	1	Feed Right: Mount on left side Feed Left: Mount on right side
17	Hose Feed - UNI	7000655	2	
18	For Feed Right/Left - UNI			Additional hose, see "Top part"
19	Washer GBR08 1/2	710704	2	
20	Adapter 136-08-08 (1/2")	710108	2	
21	Hose Rotation a	7001709	1	
22	Hose Rotation b	7001710	1	
23	Hose Tilt	7000452	4	



EC233 QSM - ss9IQ Hoses

3/4" (Std)



POS	DESCRIPTION	PART	QTY	COMMENTS
15	Hose Feed - QS70, QS80	7000454	2	QTY: 1 for Feed Right/Left
16	Hose Feed Right/Left - QS70, QS80	7000455	1	Feed Right: Mount on left side Feed Left: Mount on right side
17	Hose Feed - UNI	7000655	2	
18	For Feed Right/Left - UNI			Additional hose, see "Top part"
21	Hose Rotation a	7001709	1	
22	Hose Rotation b	7001710	1	
23	Hose Tilt	7000452	4	

POS in order of assembly