

## Planned document changes:

**Briefly:**

2024-09-30. Cables for ss0 (always w/o ECO): POS.17 & POS.20.

## Document changes:

Date:	Change:	Rev. after change:
2025-02-19	Photos added.	H
2024-11-05	EC204B cables added.	G
2023-10-24	DC3 added.	F
2023-08-15	Photos added.	E
2023-03-14	Y-split replaced. Cables added.	D
2022-09-30	Glue info updated.	C
2022-08-31	Torque updated.	B
2022-06-14	Sensor clarification.	A
2022-05-11	New document.	-

*Readers note:*

Indicates instruction.



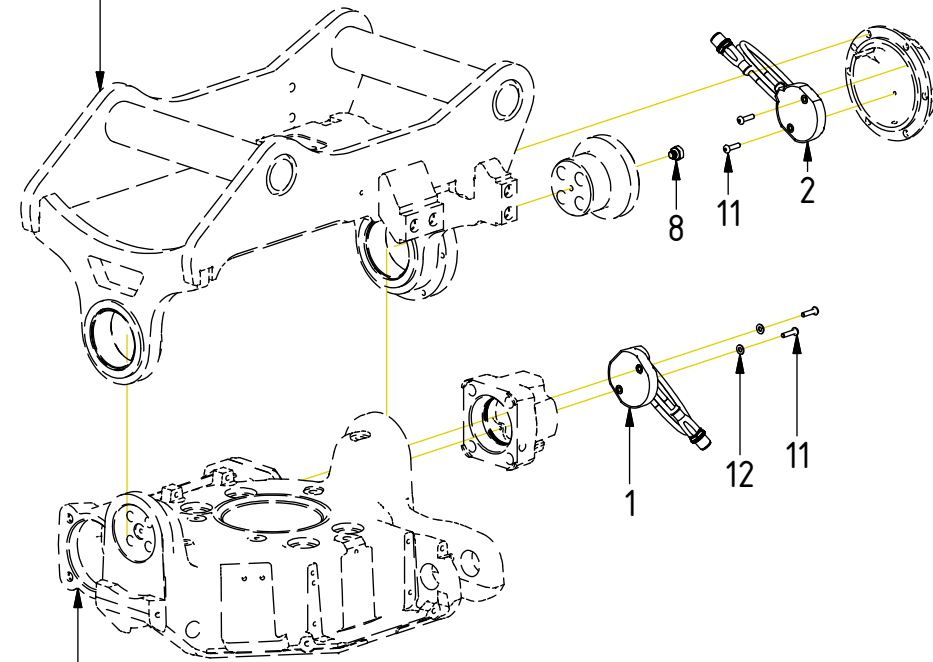
Represents Hose.

Dashed lines for overview, mounts  
on other pages/assemblies.

## EC204B

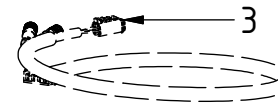
POS	DESCRIPTION	PART	QTY	COMMENTS
1	Rotation sensor EC204B	8002455	1	White side against magnet
2	Tilt angle sensor EC204B	8002467	1	White side against magnet
3	Powerplug ECO40W Left 2xM12 204B	8002454	1	Part of EC-Oil components
4	Adapter cable tilt sensor EC204B	8002471	1	
5	Y-split EC204B	8002474	1	
6	Aggregate cable DC2 1xM12 EC204B	8002470	1	Part of control system
7	Adapter cable ss9 w. 120 ohm term.	8002495	1	
8	Magnet screw - Rot./Tilt sensor	8001547	2	Loxal 83-52. Torque: 10Nm QTY: 1 for EC204B
11	K6S M4x16 10.9 FZB	6000368	4	Loxal 55-02
12	Washer BRB 4,3x9x0,8 200 HV FZB	6000127	2	

Exploded view  
Std. Top components

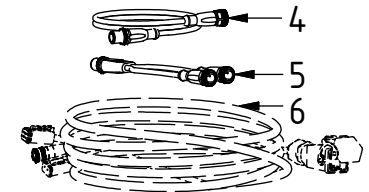


Exploded view  
Rotator frame

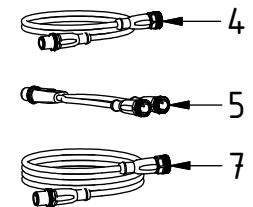
DC2 EC-Oil:



DC2 without EC-Oil:



ss9 without EC-Oil:



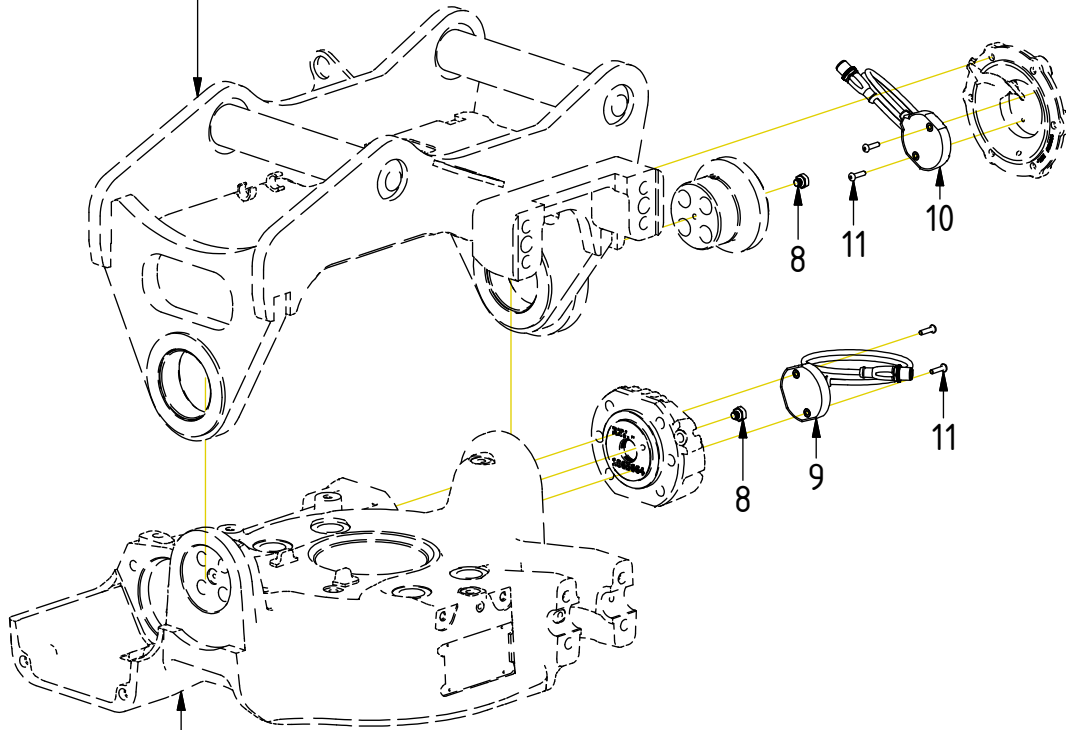
POS in order of assembly

## EC206B

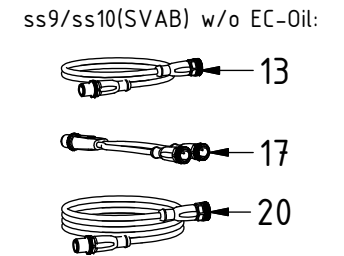
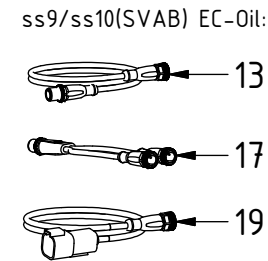
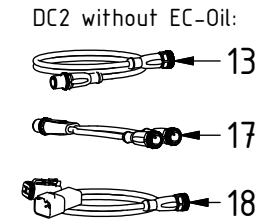
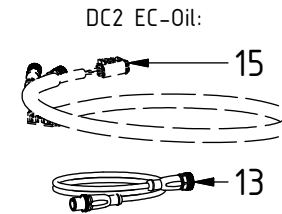
POS	DESCRIPTION	PART	QTY	COMMENTS
8	Magnet screw - Rot./Tilt sensor	8001547	2	Loxal 83-52. Torque: 10Nm QTY: 1 for EC204B
9	Rotation sensor	8001543	1	White side against magnet
10	Tilt angle sensor	8001544	1	White side against magnet
11	K6S M4x16 10.9 FZB	6000368	4	Loxal 55-02
13	Adapter cable tilt sensor 600mm	8001610	1	Cable cover: 405mm for EC206B, 495mm for EC209B
15	Powerplug ECO40W Left 2xM12 206B	8001885	1	Part of EC-Oil components
17	Y-split M12 EVC614	1069559	1	
18	Adapter cable DC2	8000783	1	
19	Ad.cable ss9/SVAB ECOW 120 ohm	8000825	1	
20	Ad.cable ss9/SVAB w. 120 ohm ter.	8000824	1	

POS in order of assembly

Exploded view  
Std. Top components



Exploded view  
Rotator frame



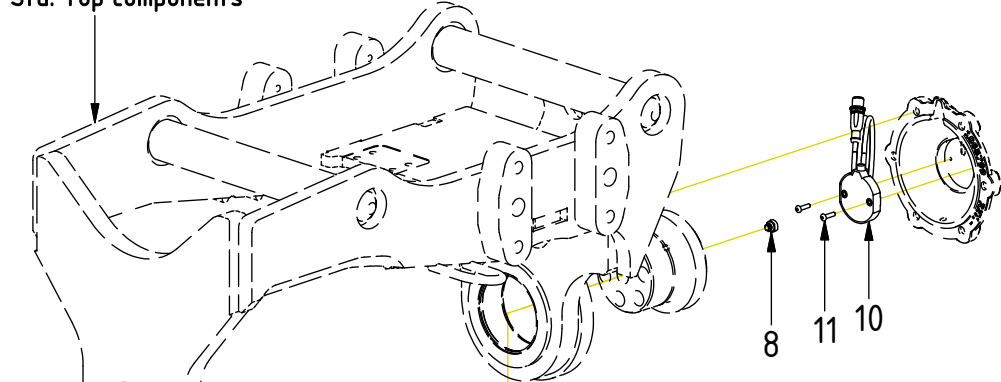
EC209B-EC233

- 21
- 22

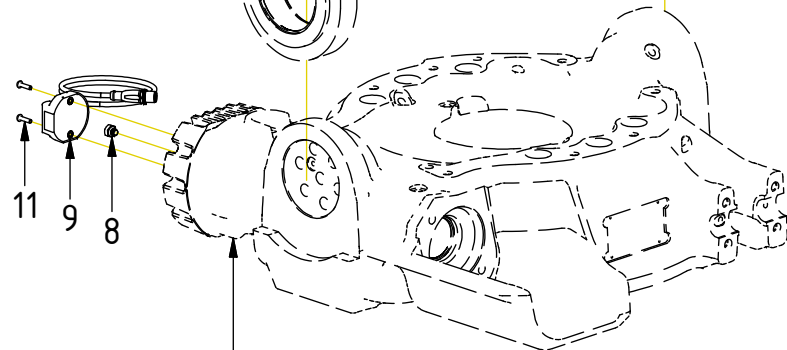
POS	DESCRIPTION	PART	QTY	COMMENTS
8	Magnet screw - Rot./Tilt sensor	8001547	2	Loxeal 83-52. Torque: 10Nm QTY: 1 for EC204B
9	Rotation sensor	8001543	1	White side against magnet
10	Tilt angle sensor	8001544	1	White side against magnet
11	K6S M4x16 10.9 FZB	6000368	4	Loxeal 55-02
13	Adapter cable tilt sensor 600mm	8001610	1	Cable cover: 405mm for EC206B, 495mm for EC209B
14	Adapter cable tilt sensor 1200mm	8001611	1	Cable cover: 800mm for EC214-233
16	Adapter cable ECO W DC2 ePS2	8001847	1	Part of Control system
17	Y-split M12 EVC614	1069559	1	
18	Adapter cable DC2	8000783	1	
19	Ad.cable ss9/SVAB ECOw 120 ohm	8000825	1	
20	Ad.cable ss9/SVAB w. 120 ohm ter.	8000824	1	
21	Rubber steel clamp $\varnothing$ 14	613009	1	
22	K6S M5x8 10.9 FZB	611801	1	

POS in order of assembly

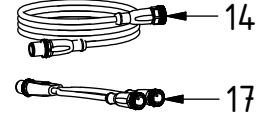
Exploded view  
Std. Top components



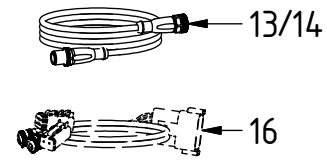
Exploded view  
Rotator frame



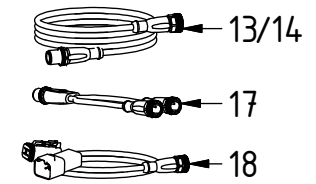
DC3 EC-Oil:



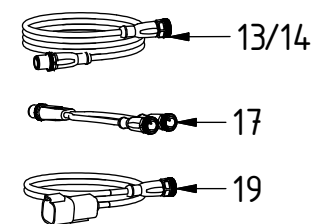
DC2 EC-Oil:



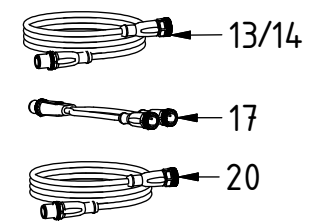
DC2 without EC-Oil:



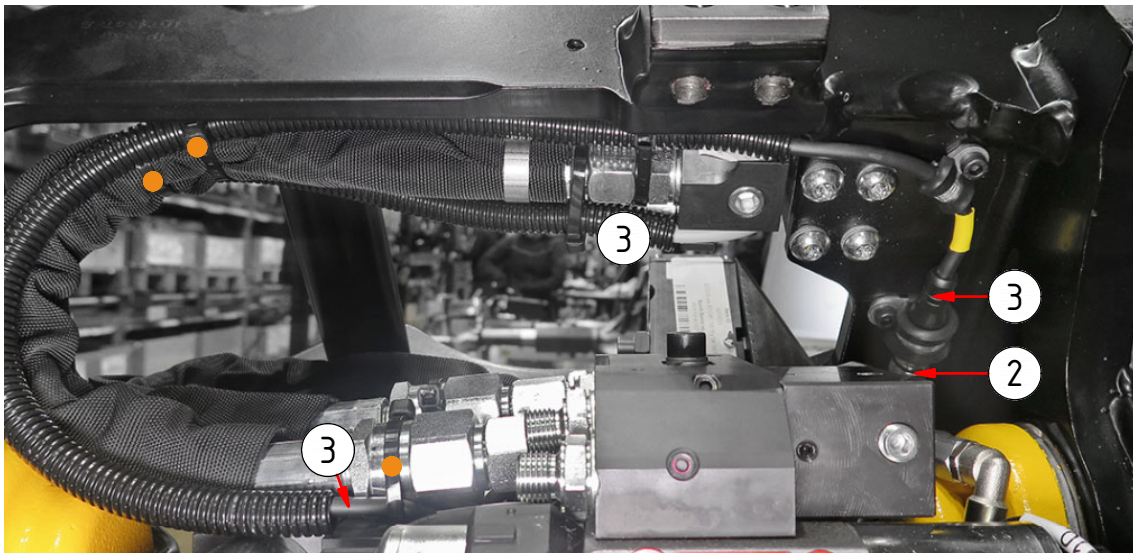
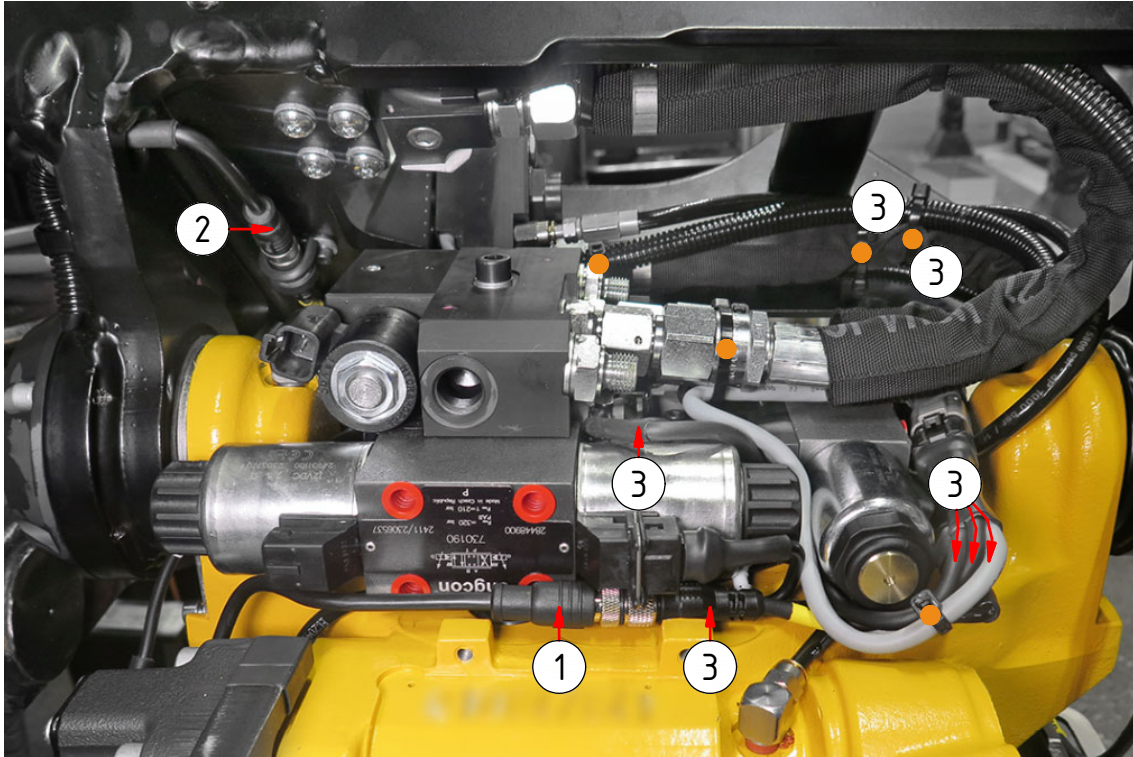
ss9/ss10(SVAB) EC-Oil:



ss9/ss10(SVAB) without EC-Oil:



EC204B  
DC2 EC-Oil



POS	DESCRIPTION	PART	QTY	COMMENTS
1	Rotation sensor EC204B	8002455	1	White side against magnet
2	Tilt angle sensor EC204B	8002467	1	White side against magnet
3	Powerplug ECO40W Left 2xM12 204B	8002454	1	Part of EC-Oil components
4	Adapter cable tilt sensor EC204B	8002471	1	
5	Y-split EC204B	8002474	1	
6	Aggregate cable DC2 1xM12 EC204B	8002470	1	Part of control system
7	Adapter cable ss9 w. 120 ohm term.	8002495	1	
●	Use cable ties			

POS in order of assembly

DC2 without EC-Oil:



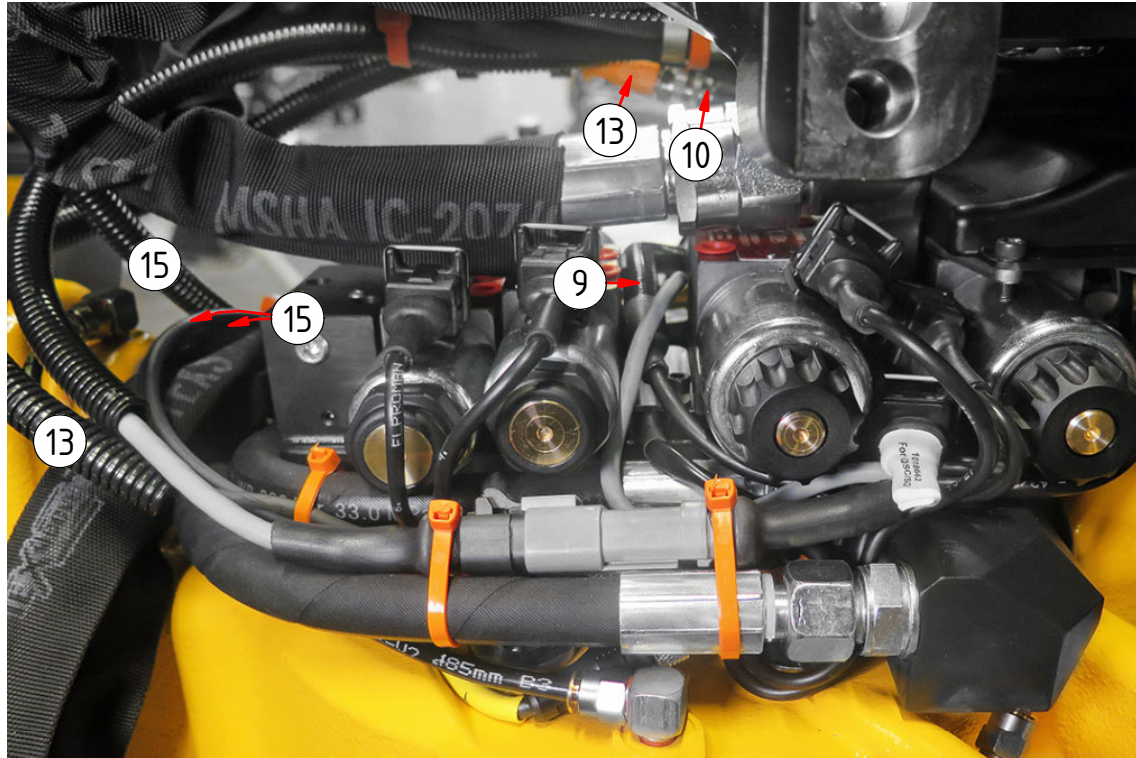
Photo needed: control system photo, how POS.5-6 are connected



Photo needed: control system photo, how POS.2 & 4 are connected



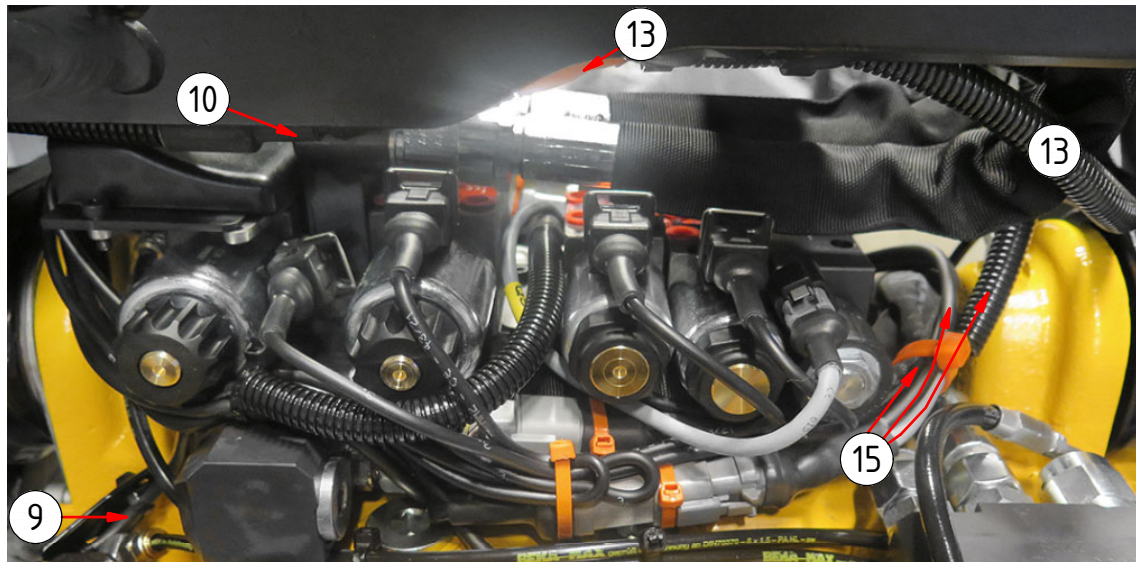
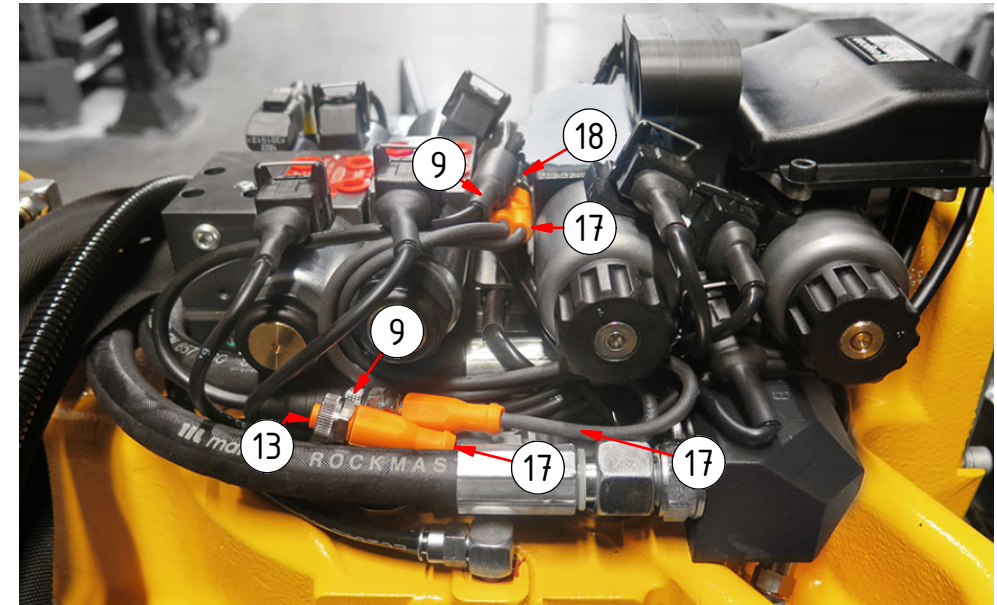
EC206B  
DC2 EC-Oil



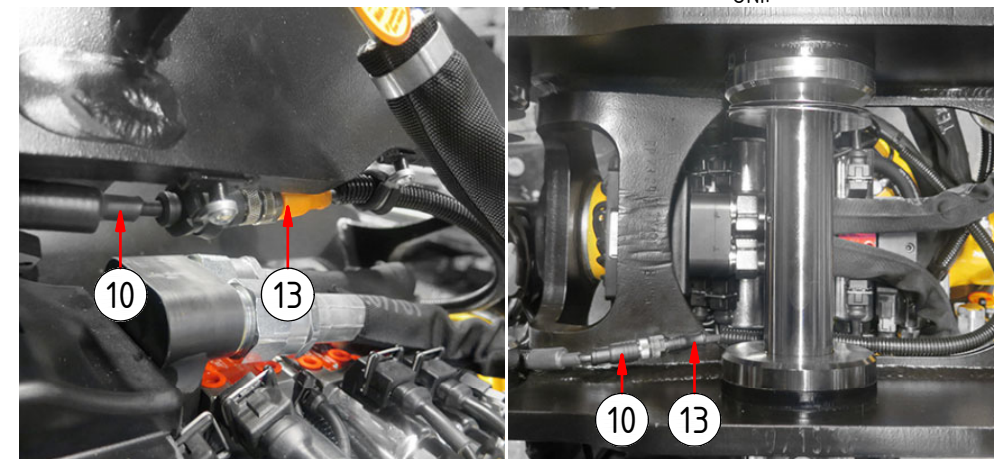
POS	DESCRIPTION	PART	QTY	COMMENTS
9	Rotation sensor	8001543	1	White side against magnet
10	Tilt angle sensor	8001544	1	White side against magnet
13	Adapter cable tilt sensor 600mm	8001610	1	Cable cover: 405mm for EC206B, 495mm for EC209B
15	Powerplug ECO40W Left 2xM12 206B	8001885	1	Part of EC-Oil components
17	Y-split M12 EVC614	1069559	1	
18	Adapter cable DC2	8000783	1	
●	Use cable ties			

POS in order of assembly

DC2 without EC-Oil:



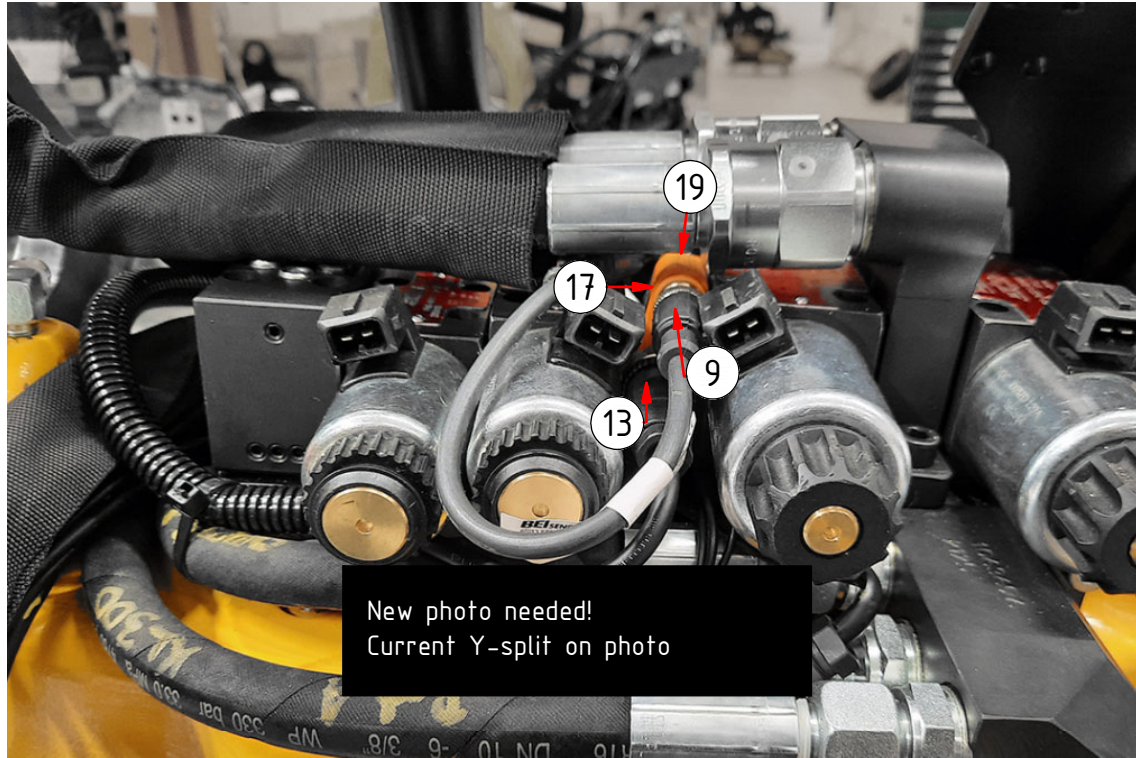
UNI:





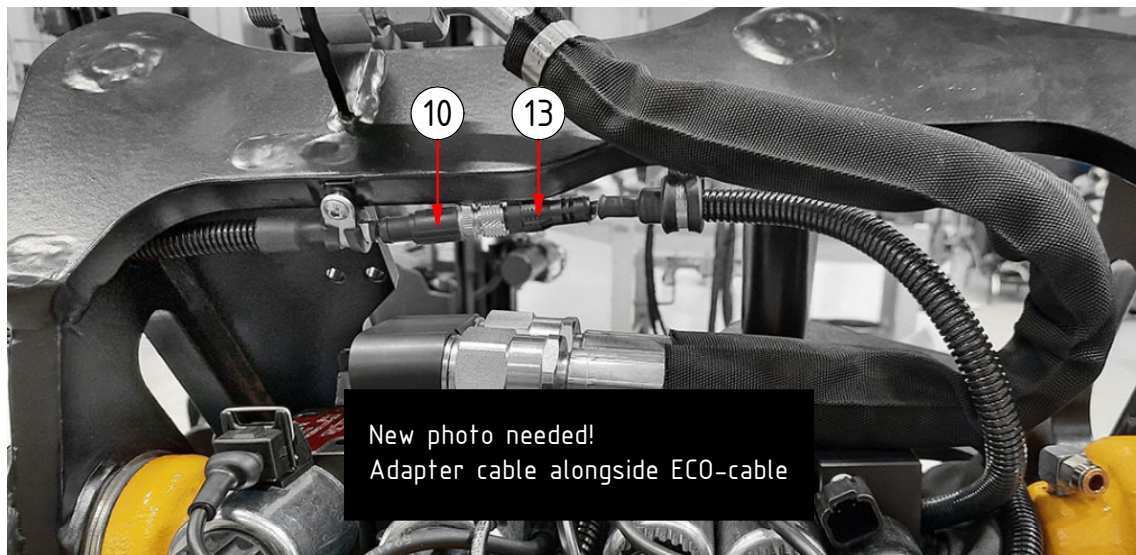
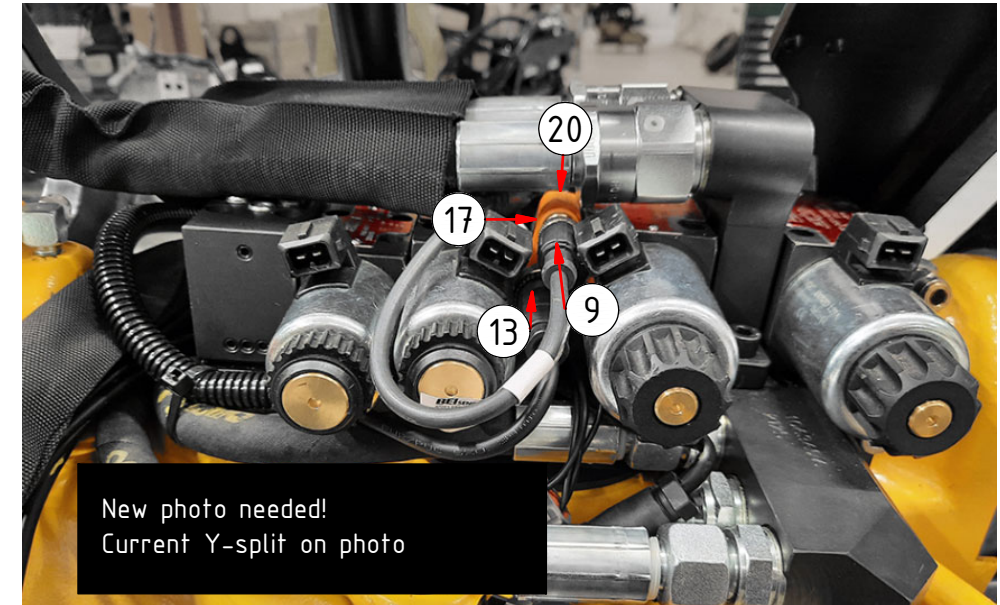
EC206B

ss9/ss10 (SVAB) EC-Oil

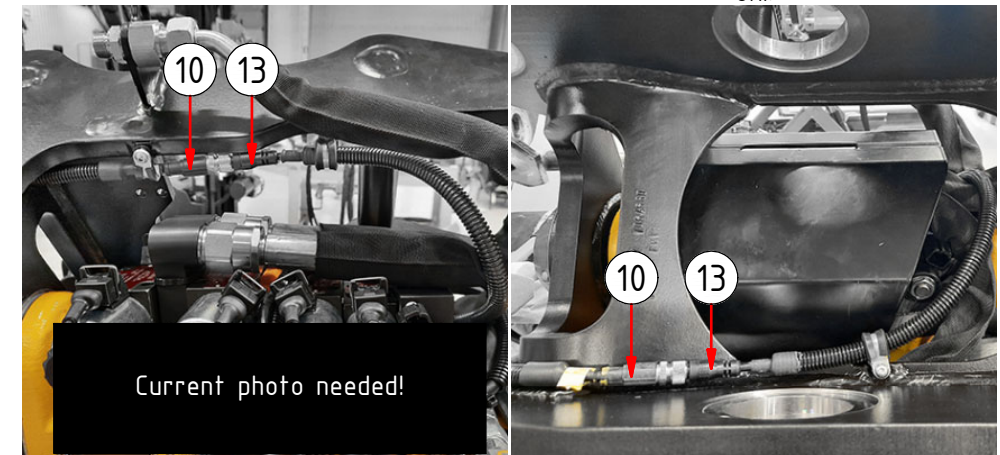


POS	DESCRIPTION	PART	QTY	COMMENTS
9	Rotation sensor	8001543	1	White side against magnet
10	Tilt angle sensor	8001544	1	White side against magnet
13	Adapter cable tilt sensor 600mm	8001610	1	Cable cover: 405mm for EC206B, 495mm for EC209B
17	Y-split M12 EVC614	1069559	1	
19	Ad.cable ss9/SVAB ECOW 120 ohm	8000825	1	
20	Ad.cable ss9/SVAB w. 120 ohm ter.	8000824	1	

ss9/ss10 (SVAB) without EC-Oil:



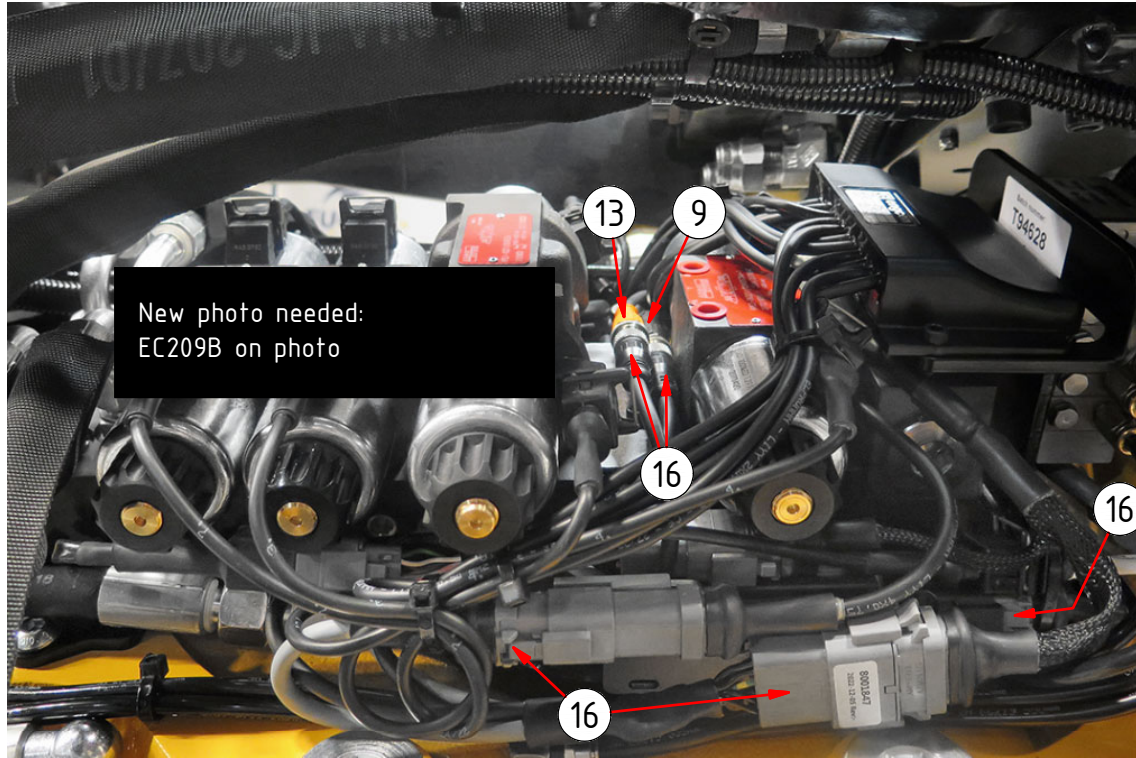
UNI:



POS in order of assembly



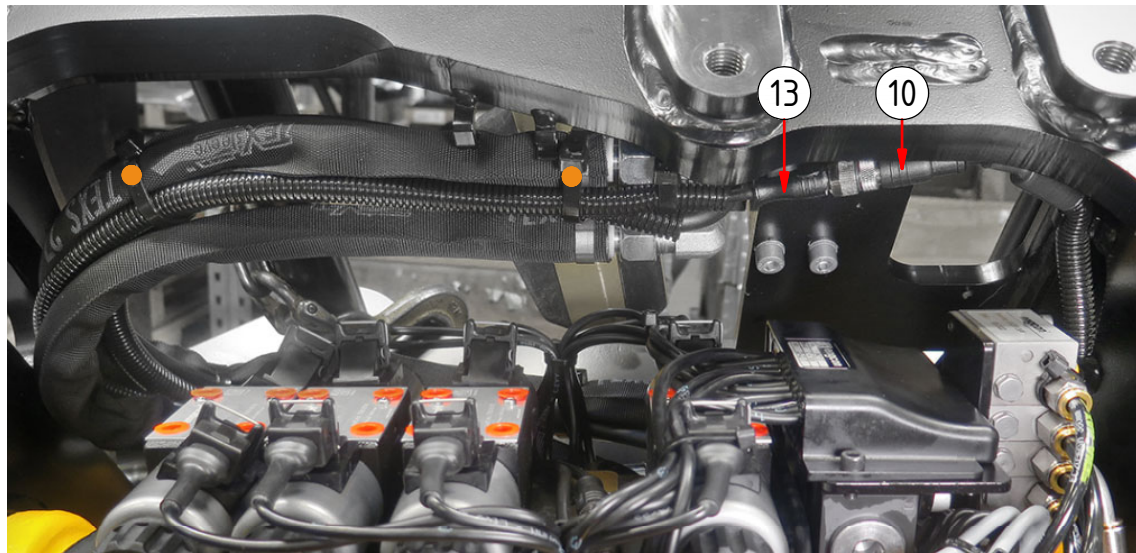
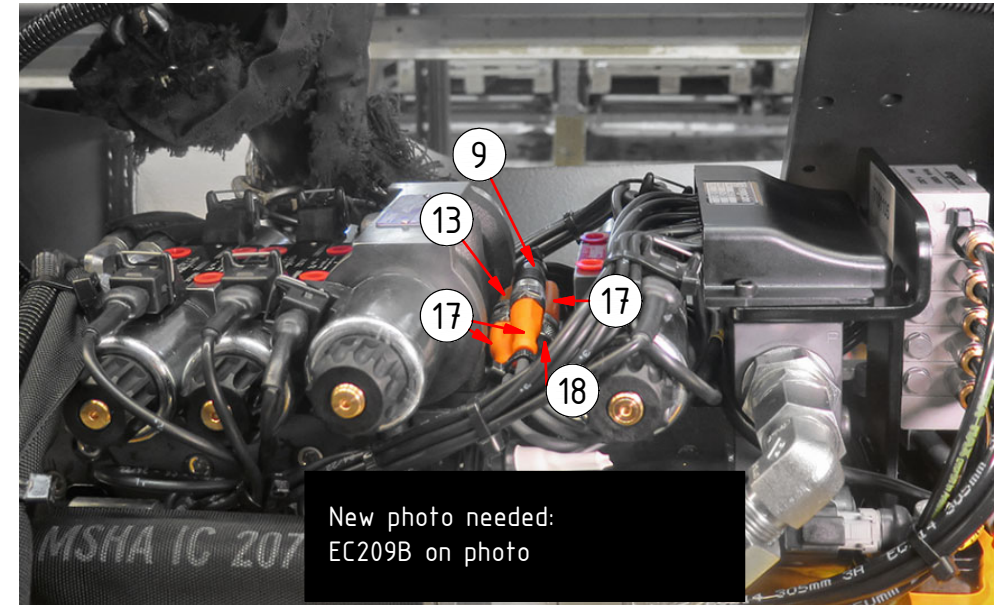
EC209B  
DC2 EC-Oil



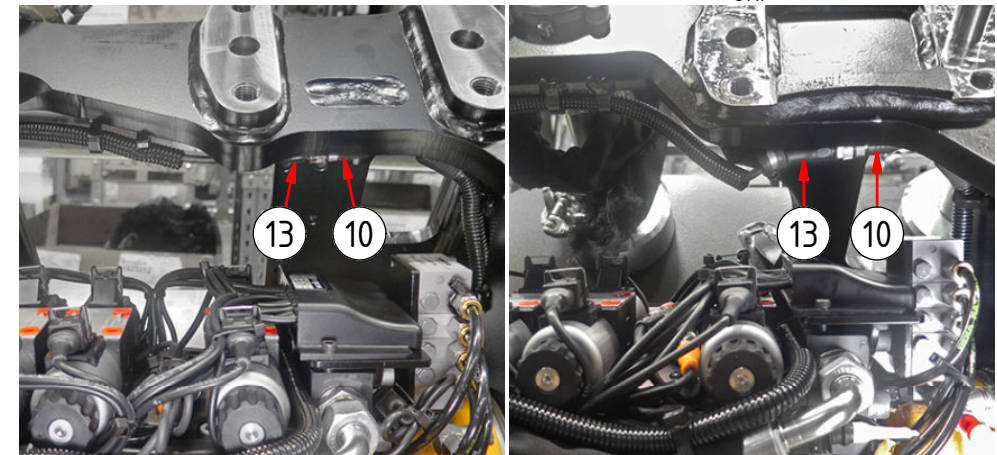
POS	DESCRIPTION	PART	QTY	COMMENTS
9	Rotation sensor	8001543	1	White side against magnet
10	Tilt angle sensor	8001544	1	White side against magnet
13	Adapter cable tilt sensor 600mm	8001610	1	Cable cover: 405mm for EC206B, 495mm for EC209B
16	Adapter cable ECO W DC2 ePS2	8001847	1	Part of Control system
17	Y-split M12 EVC614	1069559	1	
18	Adapter cable DC2	8000783	1	
●	Use cable ties			

POS in order of assembly

DC2 without EC-Oil:



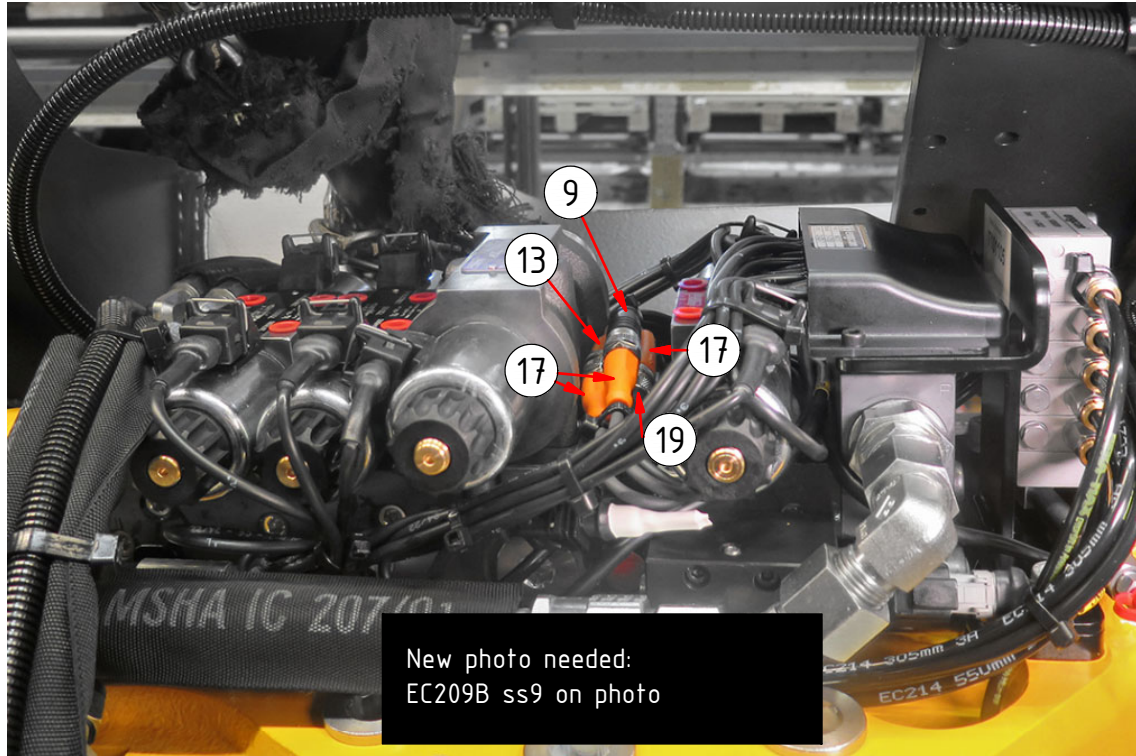
UNI:





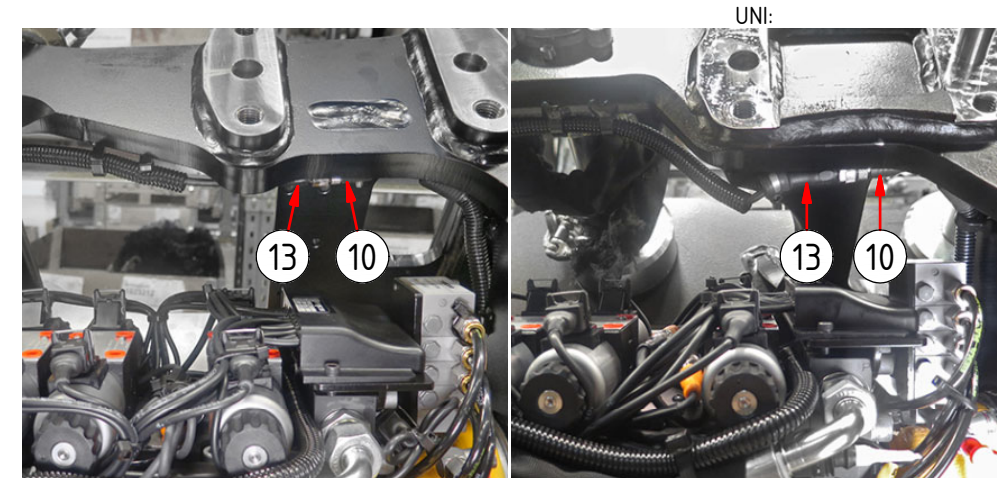
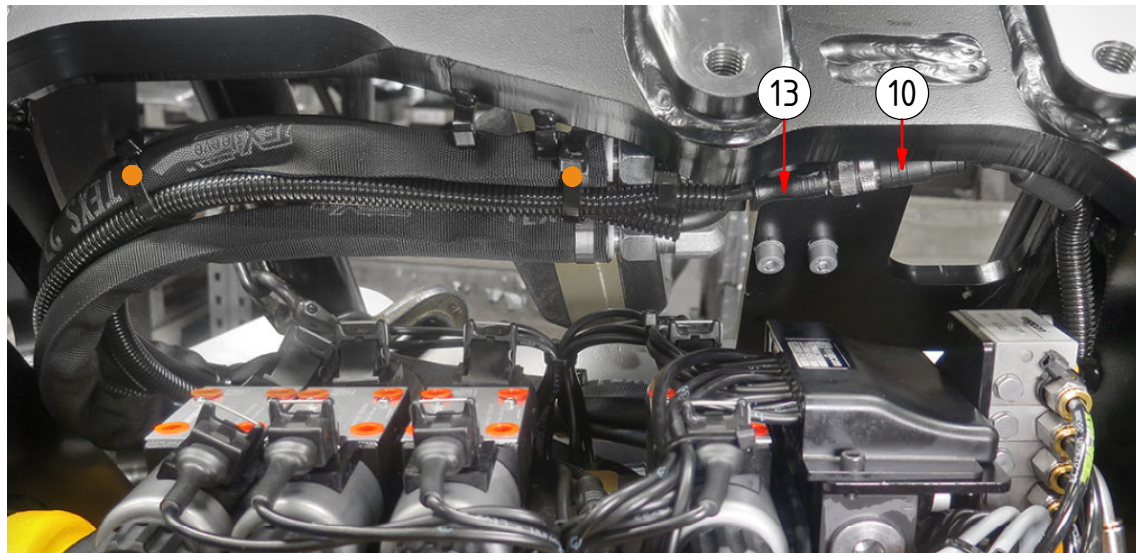
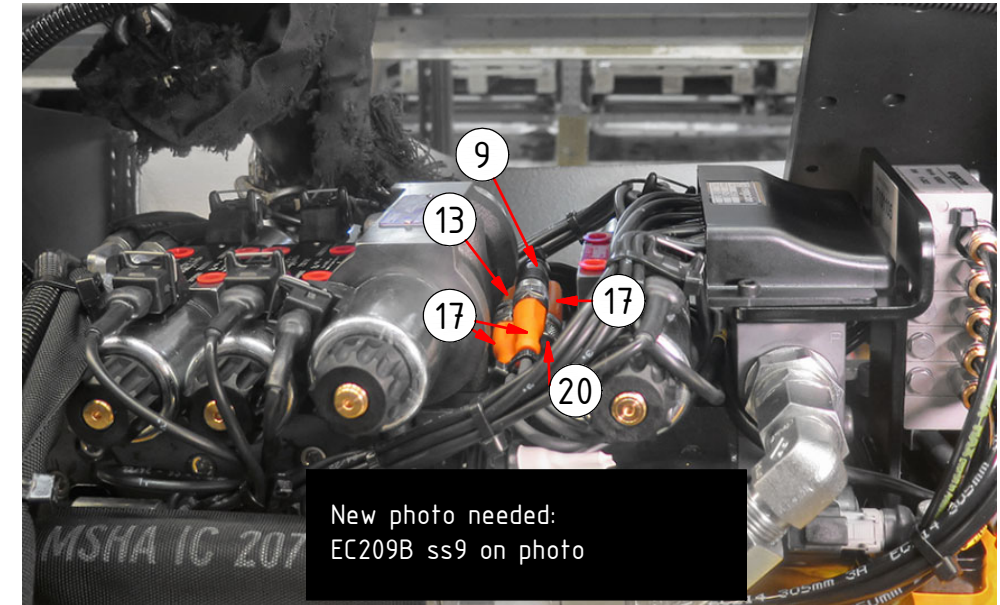
EC209B

ss9/ss10 (SVAB) EC-Oil



POS	DESCRIPTION	PART	QTY	COMMENTS
9	Rotation sensor	8001543	1	White side against magnet
10	Tilt angle sensor	8001544	1	White side against magnet
13	Adapter cable tilt sensor 600mm	8001610	1	Cable cover: 405mm for EC206B, 495mm for EC209B
17	Y-split M12 EVC614	1069559	1	
19	Ad.cable ss9/SVAB ECOW 120 ohm	8000825	1	
20	Ad.cable ss9/SVAB w. 120 ohm ter.	8000824	1	
●	Use cable ties			

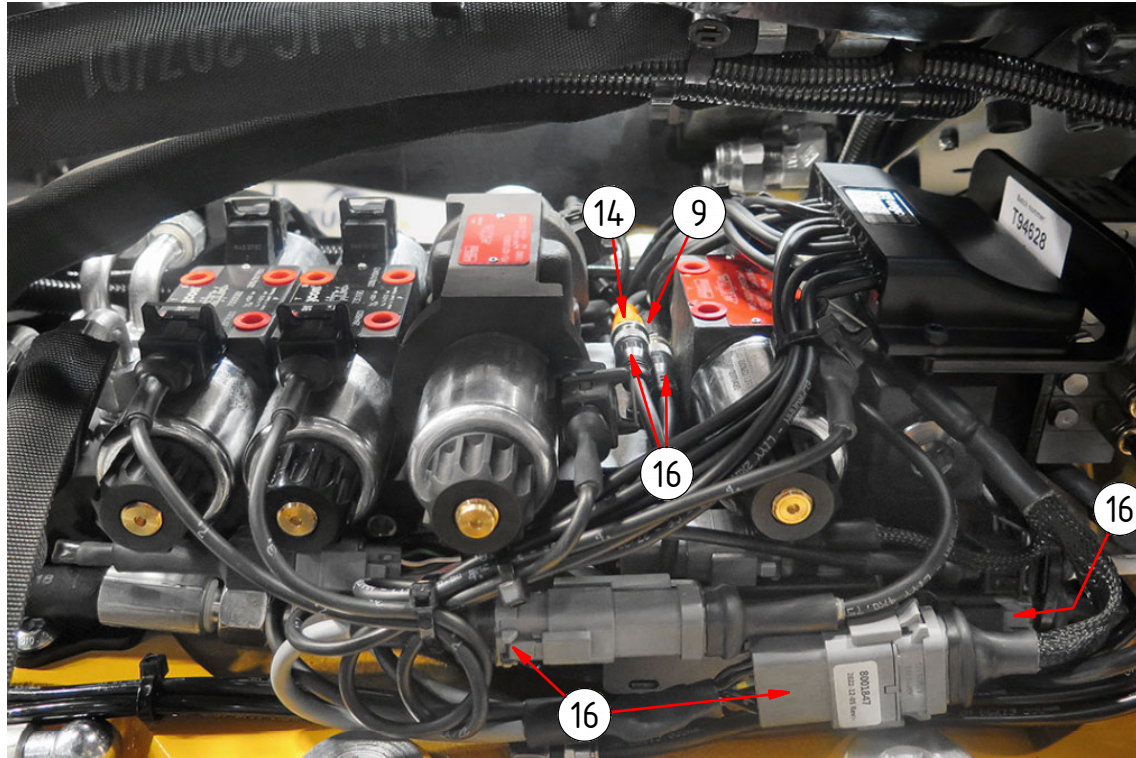
ss9/ss10 (SVAB) without EC-Oil:



POS in order of assembly



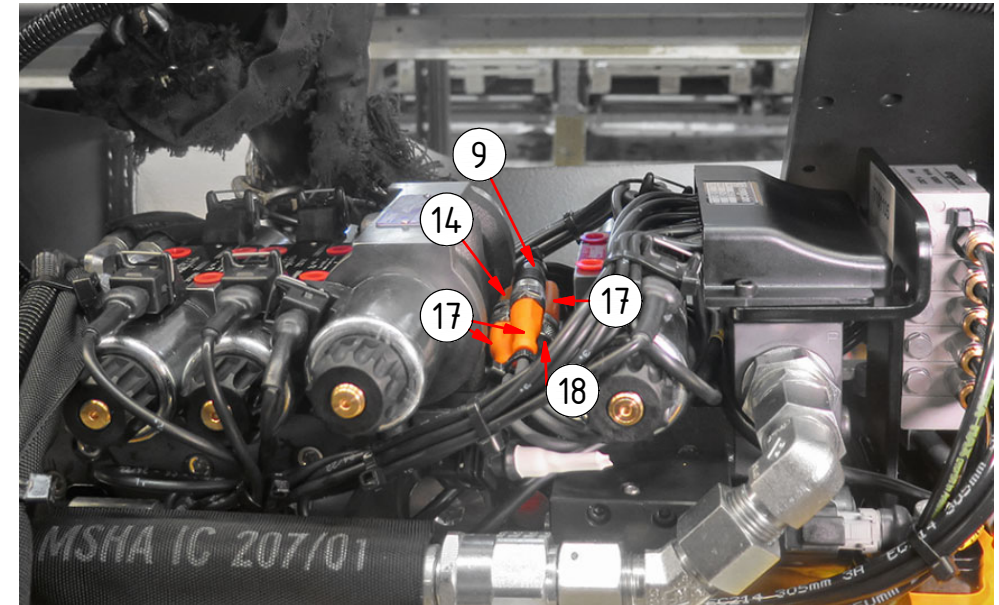
EC214-EC219  
DC2 EC-Oil



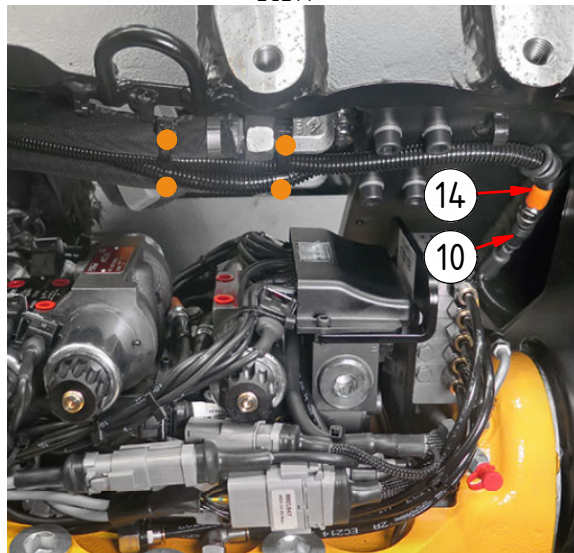
POS	DESCRIPTION	PART	QTY	COMMENTS
9	Rotation sensor	8001543	1	White side against magnet
10	Tilt angle sensor	8001544	1	White side against magnet
14	Adapter cable tilt sensor 1200mm	8001611	1	Cable cover: 800mm for EC214-233
16	Adapter cable ECO W DC2 ePS2	8001847	1	Part of Control system
17	Y-split M12 EVC614	1069559	1	
18	Adapter cable DC2	8000783	1	
●	Use cable ties			

POS in order of assembly

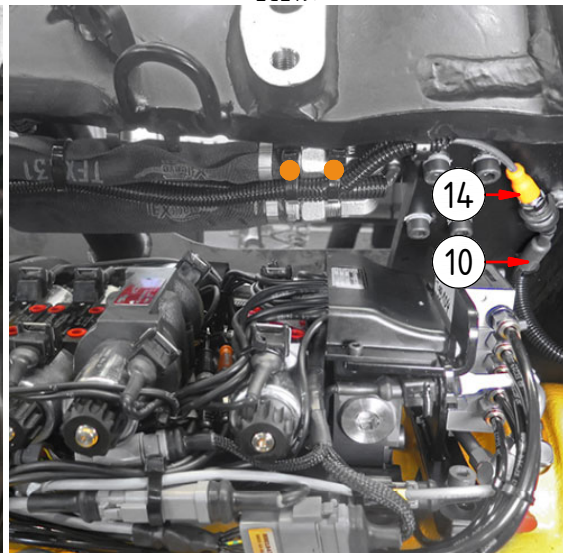
DC2 without EC-Oil:



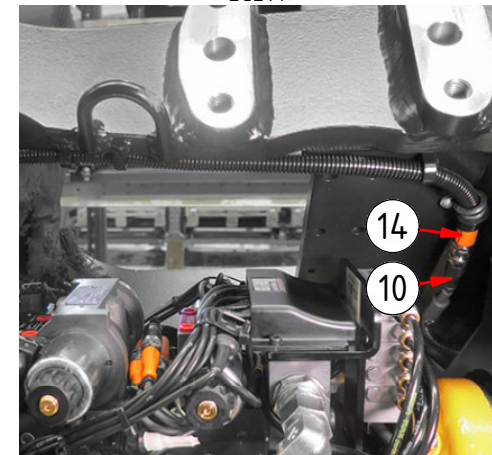
EC214:



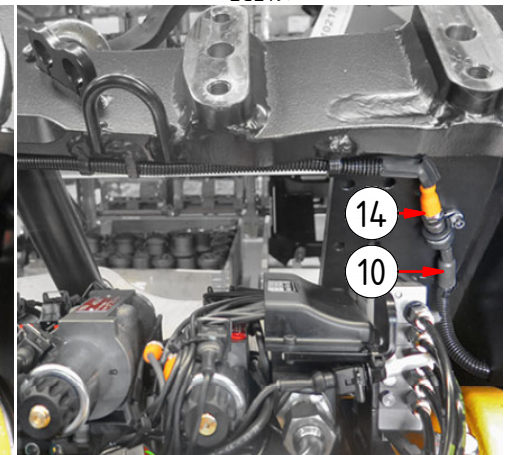
EC219:



EC214:



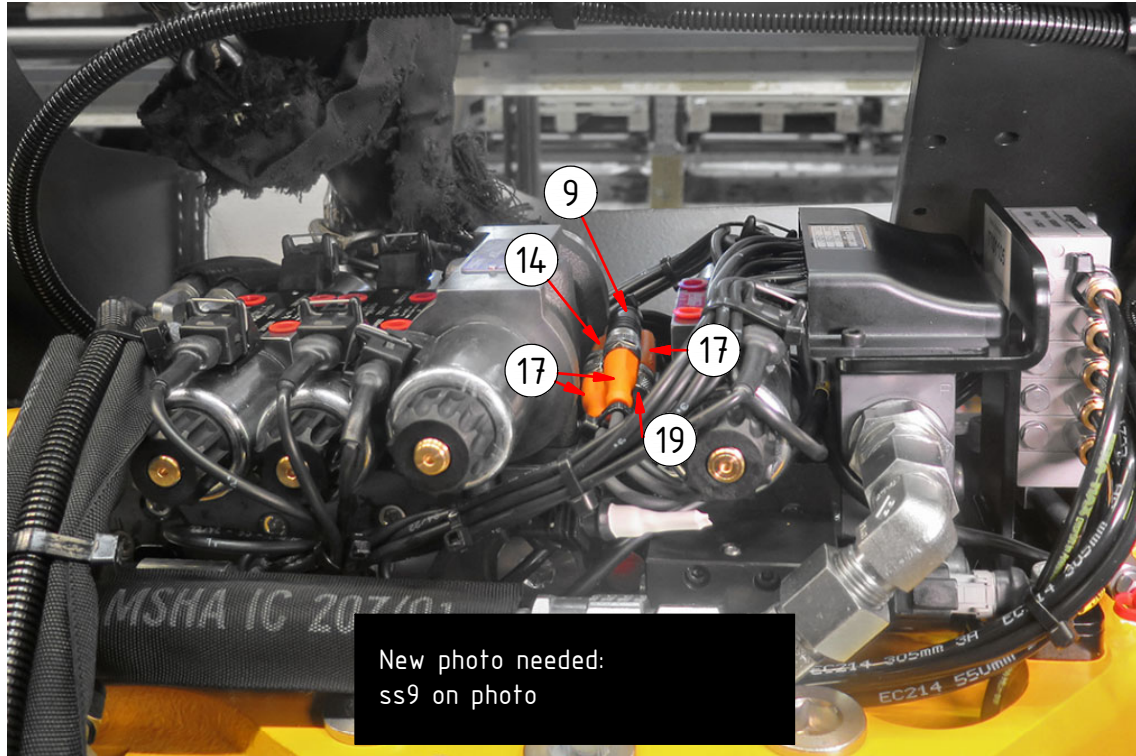
EC219:





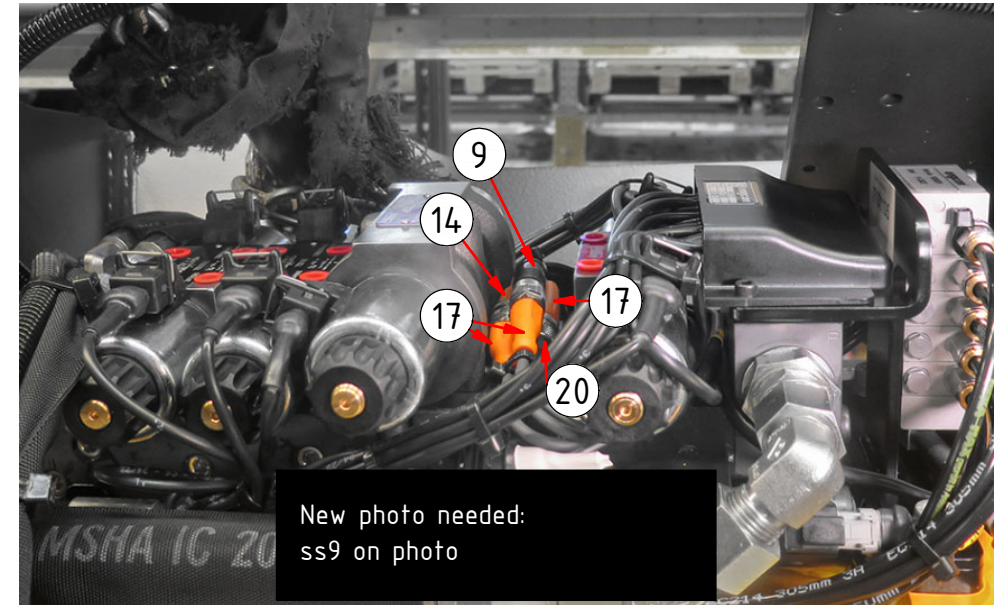
## EC214-EC219

ss9/ss10 (SVAB) EC-Oil

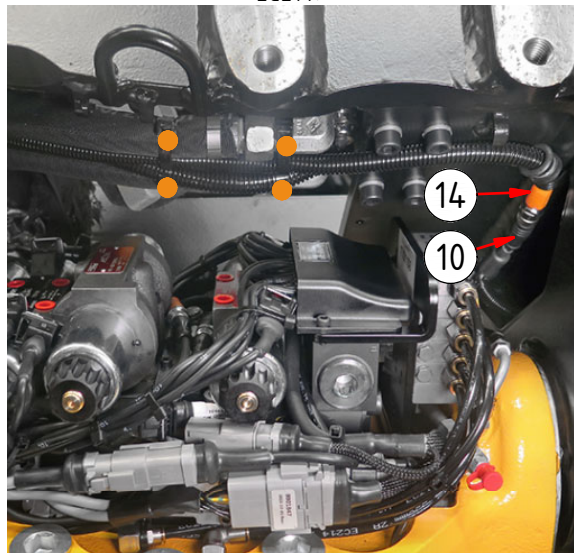


POS	DESCRIPTION	PART	QTY	COMMENTS
9	Rotation sensor	8001543	1	White side against magnet
10	Tilt angle sensor	8001544	1	White side against magnet
14	Adapter cable tilt sensor 1200mm	8001611	1	Cable cover: 800mm for EC214-233
17	Y-split M12 EVC614	1069559	1	
19	Ad.cable ss9/SVAB ECOW 120 ohm	8000825	1	
20	Ad.cable ss9/SVAB w. 120 ohm ter.	8000824	1	
●	Use cable ties			

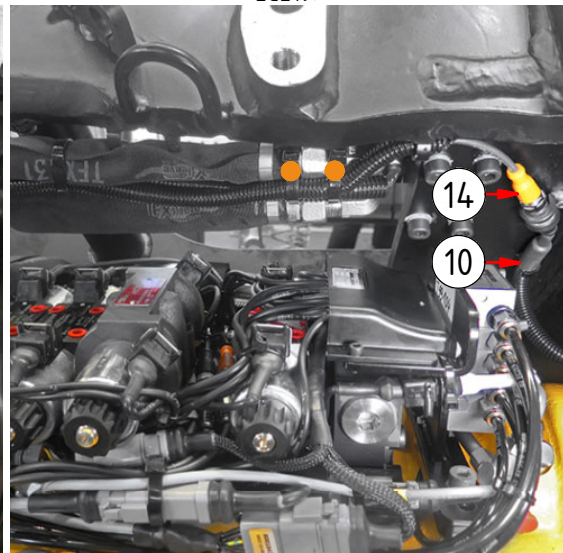
ss9/ss10 (SVAB) without EC-Oil:



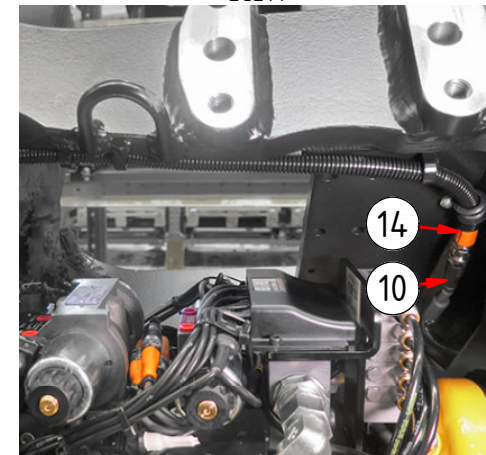
EC214:



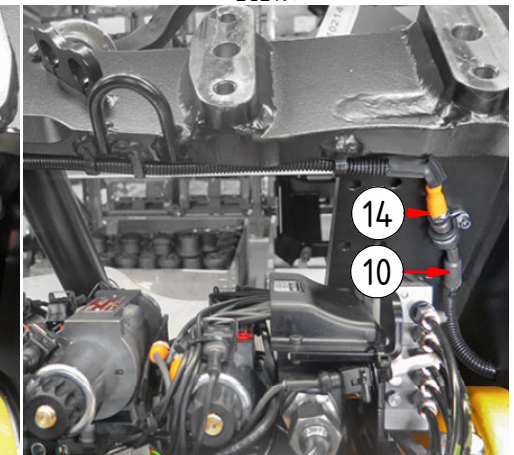
EC219:



EC214:



EC219:



EC226  
DC3 EC-Oil

POS	DESCRIPTION	PART	QTY	COMMENTS
9	Rotation sensor	8001543	1	White side against magnet
10	Tilt angle sensor	8001544	1	White side against magnet
14	Adapter cable tilt sensor 1200mm	8001611	1	Cable cover: 800mm for EC214-233
17	Y-split M12 EVC614	1069559	1	

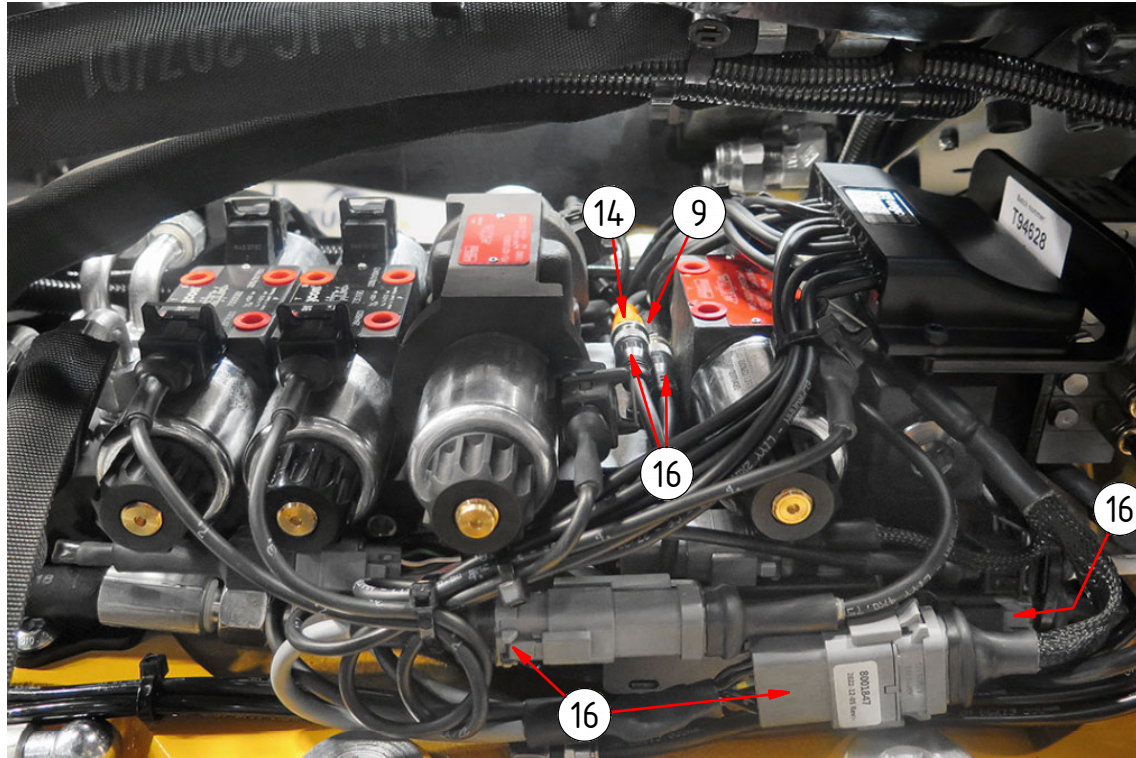
POS in order of assembly

Photo needed: control system photo,  
how POS.17 is connected

Photo needed: top part photo,  
how POS.10 is connected



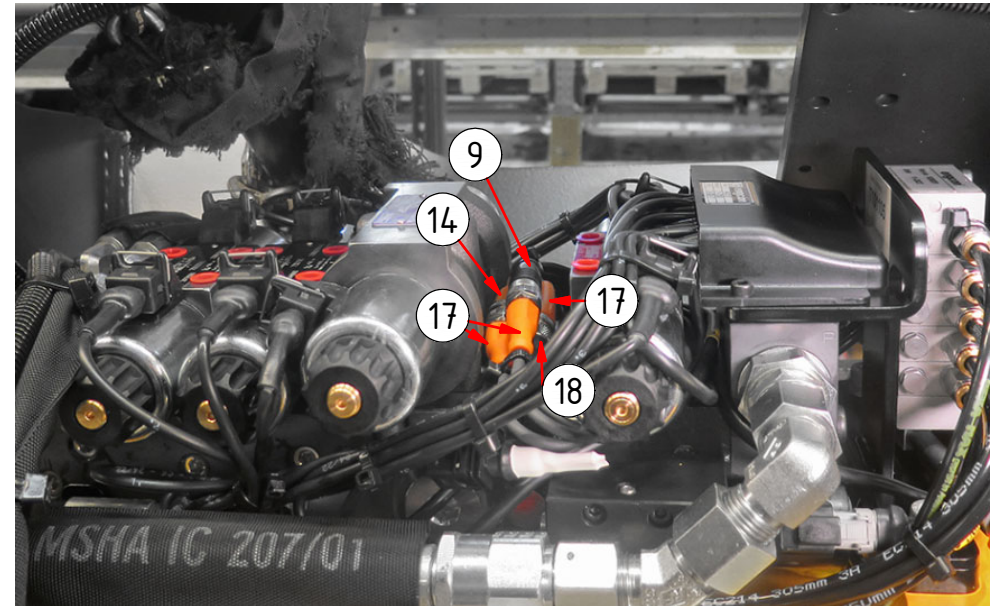
EC226-EC233  
DC2 EC-Oil



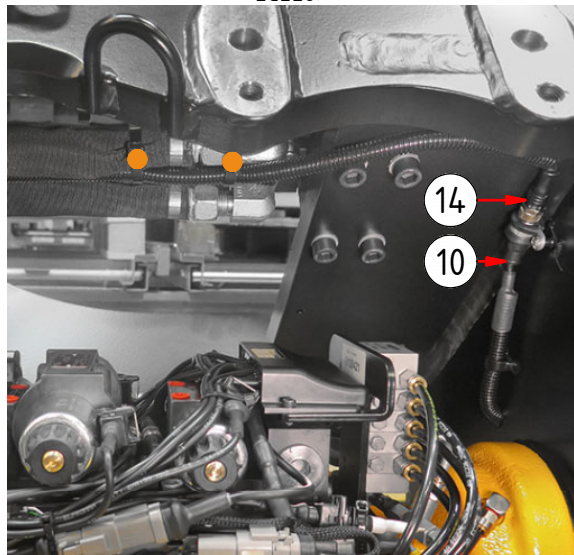
POS	DESCRIPTION	PART	QTY	COMMENTS
9	Rotation sensor	8001543	1	White side against magnet
10	Tilt angle sensor	8001544	1	White side against magnet
14	Adapter cable tilt sensor 1200mm	8001611	1	Cable cover: 800mm for EC214-233
16	Adapter cable ECO W DC2 ePS2	8001847	1	Part of Control system
17	Y-split M12 EVC614	1069559	1	
18	Adapter cable DC2	8000783	1	
●	Use cable ties			

POS in order of assembly

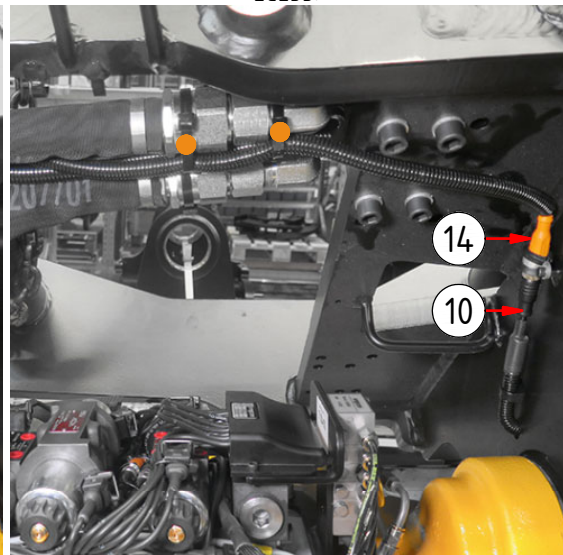
DC2 without EC-Oil:



EC226:



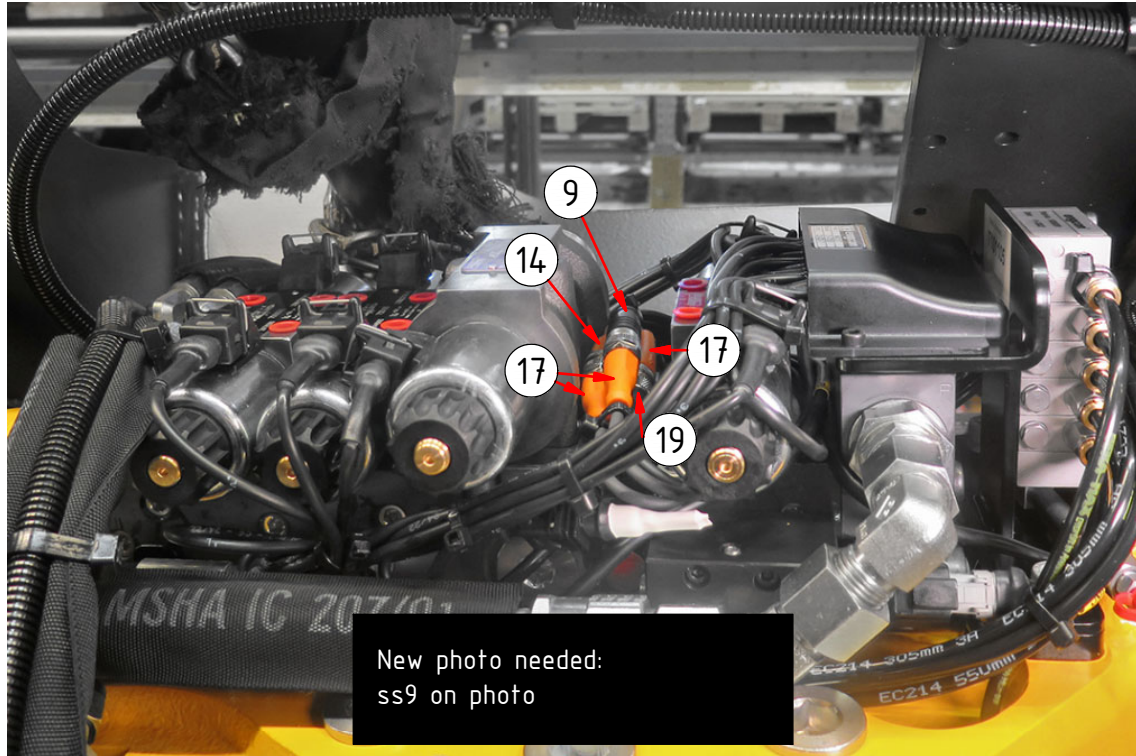
EC233:





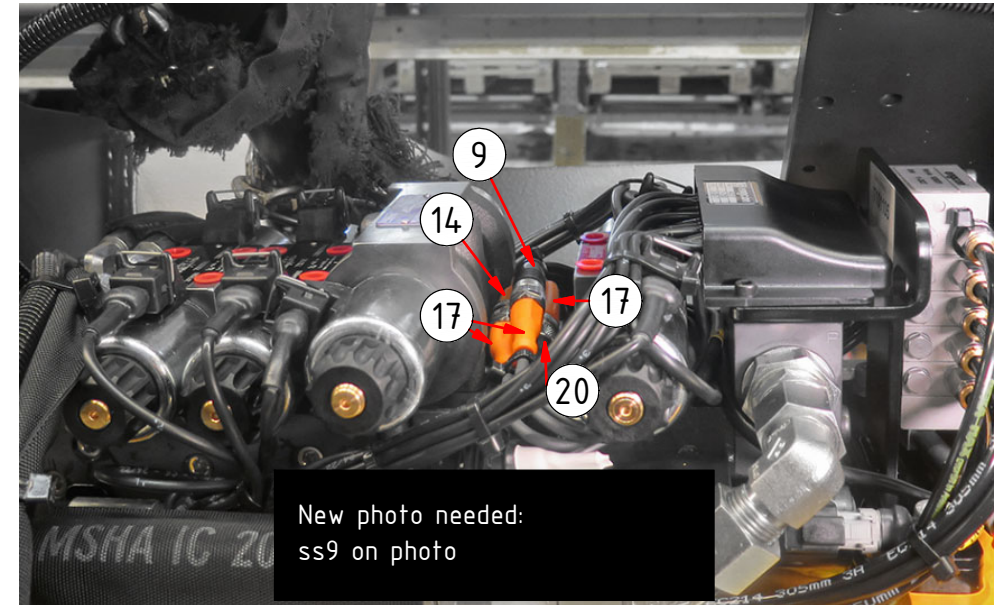
EC226-EC233

ss9/ss10 (SVAB) EC-Oil



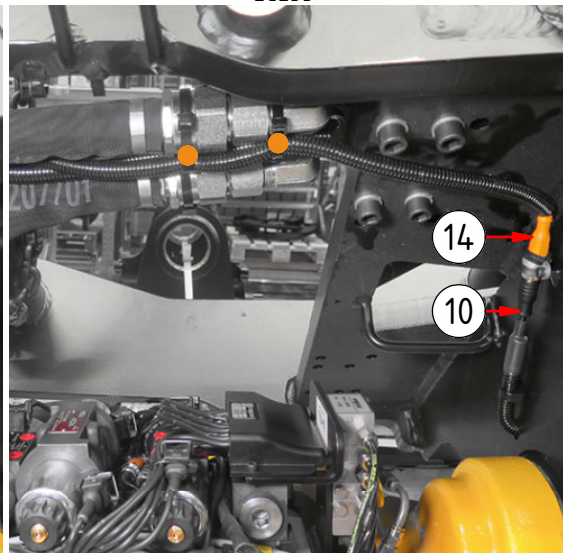
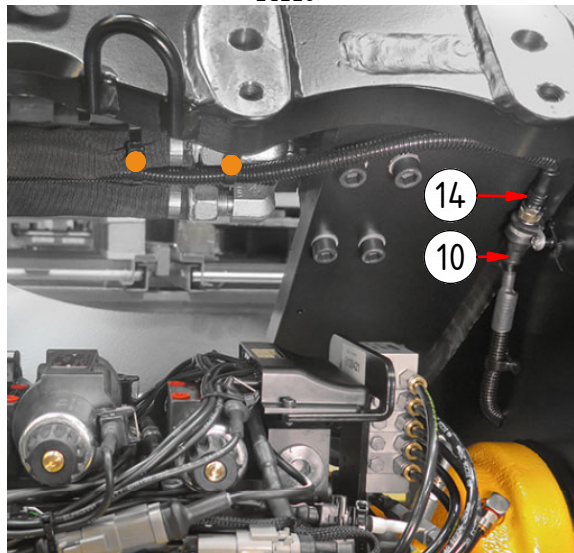
POS	DESCRIPTION	PART	QTY	COMMENTS
9	Rotation sensor	8001543	1	White side against magnet
10	Tilt angle sensor	8001544	1	White side against magnet
14	Adapter cable tilt sensor 1200mm	8001611	1	Cable cover: 800mm for EC214-233
17	Y-split M12 EVC614	1069559	1	
19	Ad.cable ss9/SVAB ECOW 120 ohm	8000825	1	
20	Ad.cable ss9/SVAB w. 120 ohm ter.	8000824	1	
●	Use cable ties			

ss9/ss10 (SVAB) without EC-Oil:



EC226:

EC233:





## SPARE PARTS



21

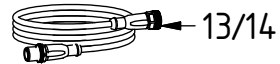


22

POS	DESCRIPTION	PART	QTY	COMMENTS
13	Adapter cable tilt sensor 600mm	8001610	1	Cable cover: 405mm for EC206B, 495mm for EC209B
14	Adapter cable tilt sensor 1200mm	8001611	1	Cable cover: 800mm for EC214-233
17	Y-split M12 EVC614	1069559	1	
18	Adapter cable DC2	8000783	1	
20	Ad.cable ss9/SVAB w. 120 ohm ter.	8000824	1	
21	Rubber steel clamp $\varnothing 14$	613009	1	
22	K6S M5x8 10.9 FZB	611801	1	
23	Y-split M12 EBC116	1065340	1	Replaced by POS.17

POS in order of assembly

DC2 with Y-split "EBC116":



13/14

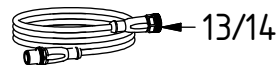


23



18

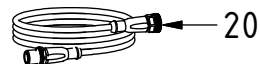
ss9/ss10 (SVAB) with Y-split "EBC116":



13/14



23



20