

Planned document changes:

Briefly:

No planned changes.

Document changes:

Date:	Change:	Rev. after change:
2024-02-06	Updated assy. for PP3200. Spare parts page added.	B
2024-01-18	Screws corrected. Hoses on photos corrected.	A
2020-09-01	New document.	-

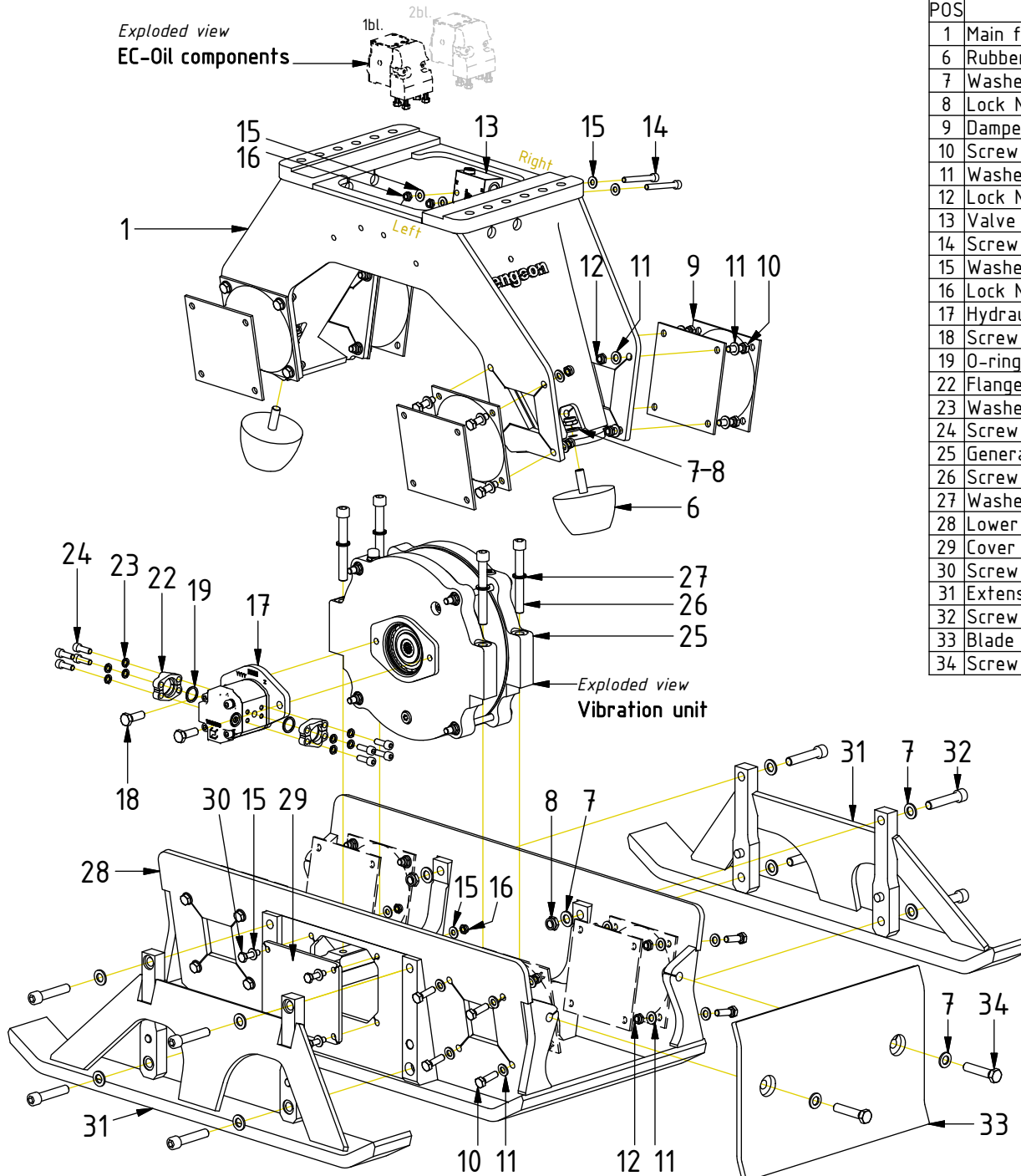
Readers note:

Indicates instruction.



Represents Hose.

Dashed lines for overview, mounts
on other pages/assemblies.



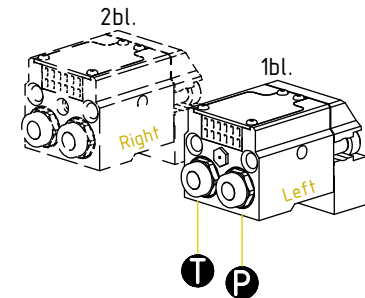
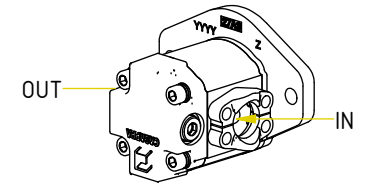
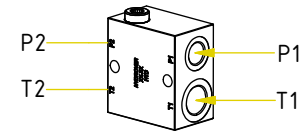
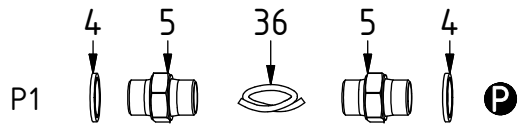
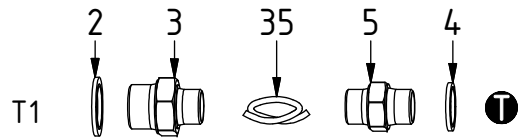
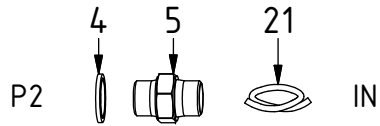
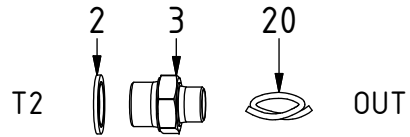
POS	DESCRIPTION	PART	QTY	COMMENTS
1	Main frame PP3200	1013820	1	
6	Rubber TP120	640303	2	
7	Washer BRB 17x30x3	611009	18	
8	Lock Nut M6M M16x2 8,8 FZB	610926	8	
9	Damper	640301	4	
10	Screw M6S M12x40 8,8 FZB	610476	32	
11	Washer BRB 13x24x2,5 200 HV FZB	611007	72	
12	Lock Nut M6M M12x1,75 8,8 FZB	610924	36	
13	Valve block	7001904	1	
14	Screw MC6S M10x80 12.9	610463	2	
15	Washer BRB 10,5x22x2 200 HV FZB	611006	12	
16	Lock Nut M6M M10x1,5 8,8 FZB	610923	6	
17	Hydraulic motor 14CC chock	7000475	1	
18	Screw M6S M14x40 10.9 untreated	6000284	2	
19	O-ring 24,99x3,53 3/4"	710935	2	
22	Flange half 3/4" 3000PSI	711085	4	
23	Washer NL 10mm	611041	8	
24	Screw MC6S M10x30 12.9 Geomet	612018	8	
25	Generator PP3200	1011618	1	
26	Screw MC6S M16x130 12.9 ZFSHL	6000154	4	
27	Washer NL 16mm	611044	4	
28	Lower part PP3200	1013812	1	
29	Cover plate	1013825	1	
30	Screw M6S M10x40 8,8	610145	4	
31	Extension PP3200	1013826	2	
32	Screw MC6S M16x80 12.9	610528	8	
33	Blade PP3200	1011625	1	
34	Screw M6S M16x75 8,8 FZB	6000008	2	

EC-Oil

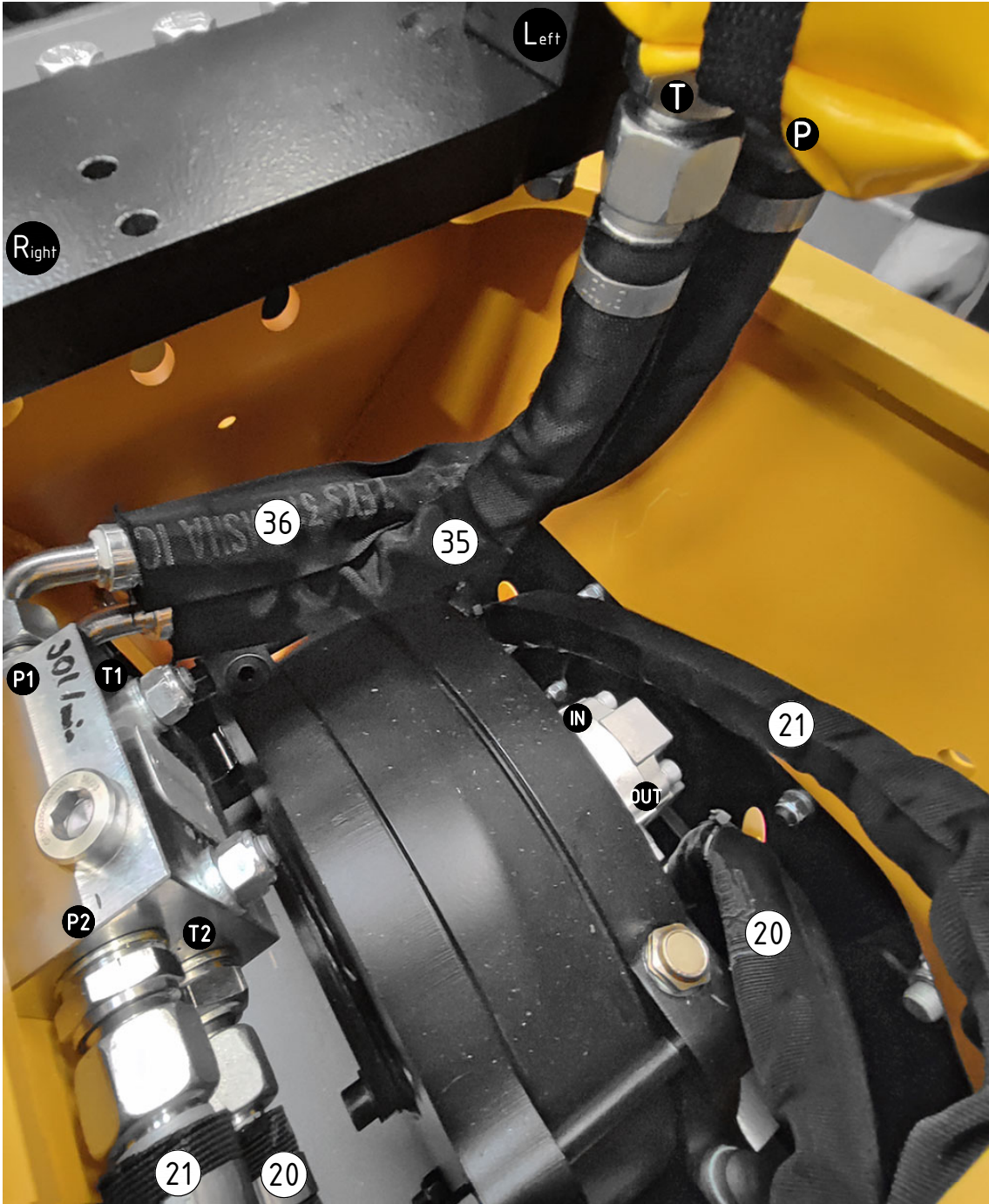
ECO60 W:

POS	DESCRIPTION	PART	QTY	COMMENTS
2	Washer GBR12 3/4	710706	2	
3	Adapter 135-08-12 (1/2"-3/4")	710109	2	
4	Washer GBR08 1/2	710704	4	
5	Adapter 136-08-08 (1/2")	710108	4	
20	Hose T	7001921	1	
21	Hose P	7001920	1	
35	Hose EC-Oil T	7001919	1	
36	Hose EC-Oil P	7001918	1	

POS in order of assembly



ECO60 W:



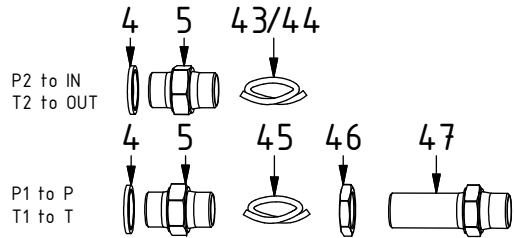
POS	DESCRIPTION	PART	QTY	COMMENTS
20	Hose T	7001921	1	
21	Hose P	7001920	1	
35	Hose EC-Oil T	7001919	1	
36	Hose EC-Oil P	7001918	1	

POS in order of assembly

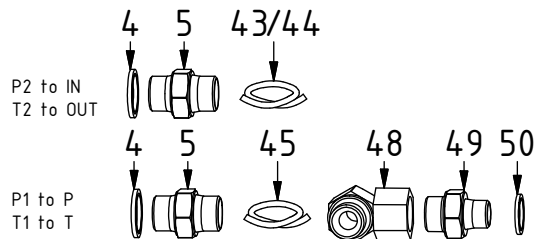
SPARE PARTS

PP3200 until 2024-02

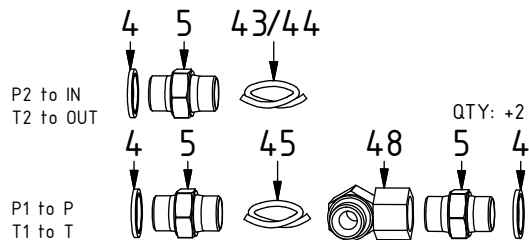
Without EC-Oil:



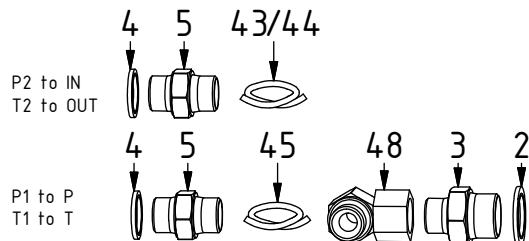
ECO45 W:



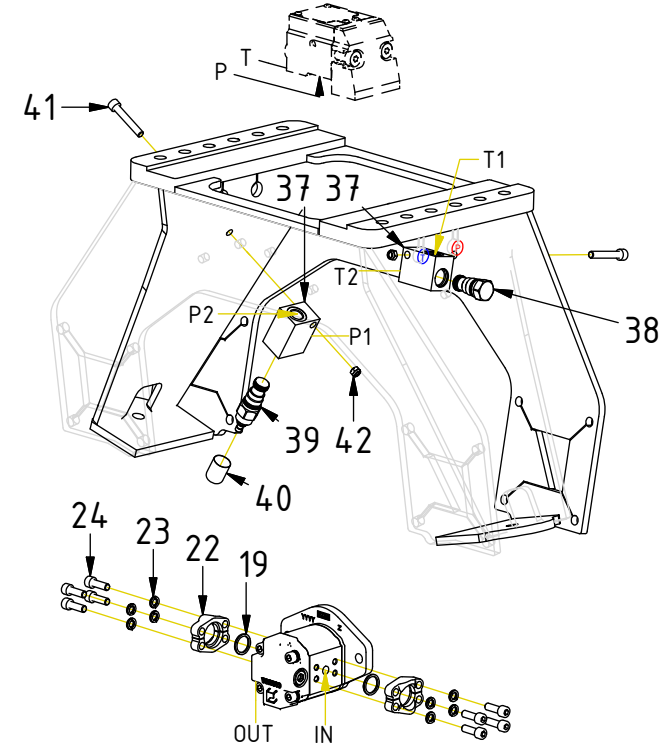
ECO60 W:



ECO70 W:



POS	DESCRIPTION	PART	QTY	COMMENTS
2	Washer GBR12 3/4	710706	2	
3	Adapter 135-08-12 (1/2"-3/4")	710109	2	
4	Washer GBR08 1/2	710704	4	
5	Adapter 136-08-08 (1/2")	710108	4	
19	O-ring 24,99x3,53 3/4"	710935	2	
22	Flange half 3/4" 3000PSI	711085	4	
23	Washer NL 10mm	611041	8	
24	Screw MC6S M10x30 12.9 Geomet	612018	8	
37	Valve body DAV/S2	730282	2	
38	Check valve	730279	1	
39	Flow limiter	730280	1	
40	Protective hood	730281	1	
41	Screw MC6S M10x60 12.9	610460	2	
42	Hex. Nut M8 Nylon Lock	612008	2	
43	Hose P2 to IN	740810	1	
44	Hose T2 to OUT	740808	1	
45	Hose P1 to P & T1 to T	740809	2	
46	Counternut 1270-08 (1/2")	710254	2	
47	Adapter 1260-08-45 (1/2")	710263	2	
48	Adapter 090-08-08 90° (1/2")	710217	2	
49	Adapter 135-06-08	710122	2	
50	Washer GBR06 3/8	710703	2	



POS in order of assembly