

COVERSHEET


Planned document changes:

Briefly:

 No planned changes.

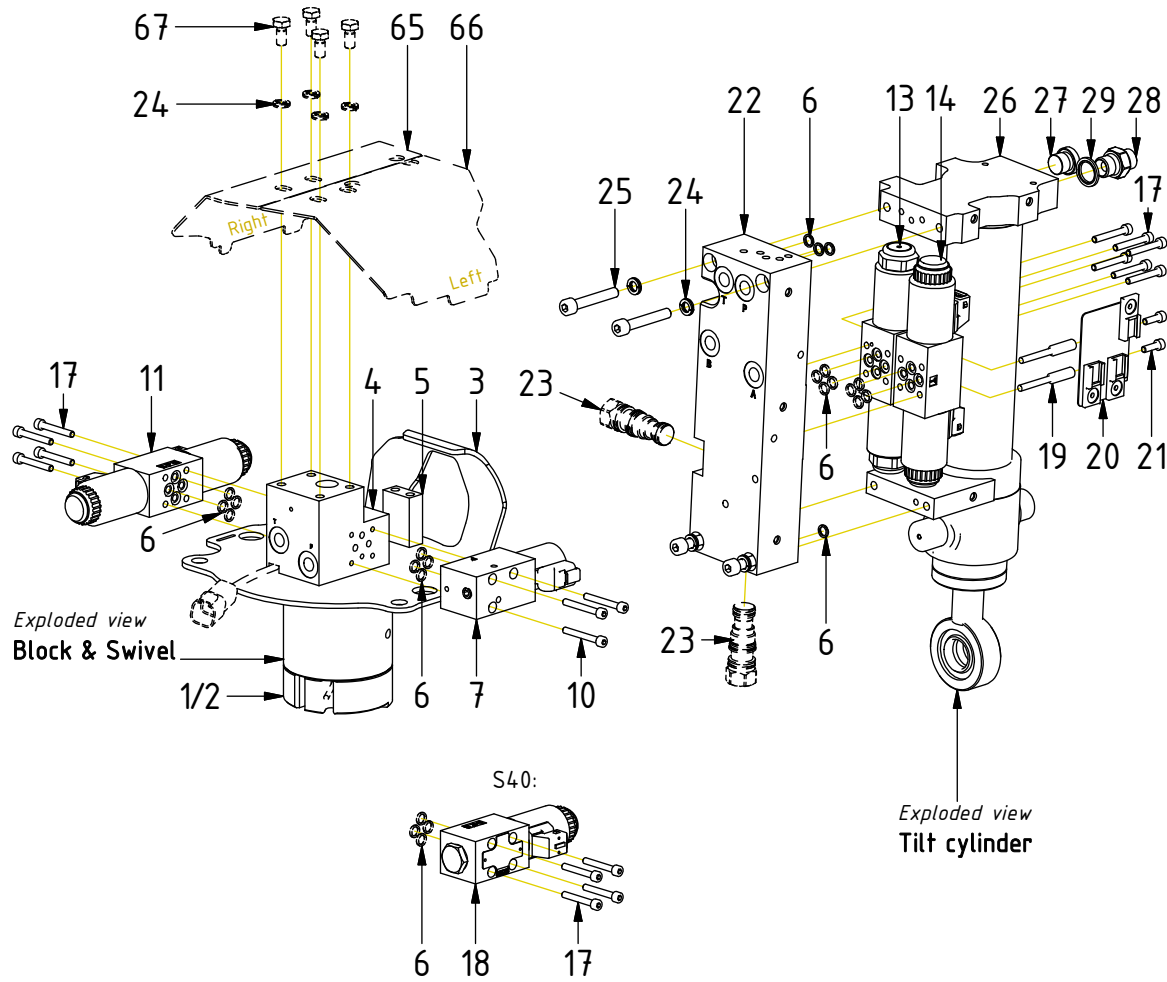
Document changes:

Date:	Change:	Rev. after change:
2025-02-13	Spare parts page option "With terminals" added.	N
2024-01-09	Cable photo DC2 ECO clarified.	M
2023-12-08	Swivel w. slipring also available for ss10 (SVAB).	L
2023-08-17	EC-Oil hoses corrected.	K
2023-04-17	Spare parts page updated.	J
2022-12-01	Torques added. Spare parts page updated.	I
2022-11-10	EC-Oil added.	H
2022-10-04	Swivel w. slipring, new DC2 module and joint cable added.	G
	Feed Left no longer std config. New layout.	
2020-11-05	Option Feed Right+Left "With terminals" added.	F
2020-03-17	Parts for XP added.	E
2019-11-29	Plug for Feed Right+Left added.	D
2019-05-10	Channels for hoses clarified.	C
2019-04-30	DC2 aggregate cable replaced. Spare parts page added.	B
2019-04-09	Photo for std hoses (feed left) added.	A
2019-03-04	New document.	-

Readers note:
 Indicates instruction.

 Represents Hose.

Dashed lines for overview, mounts
on other pages/assemblies.



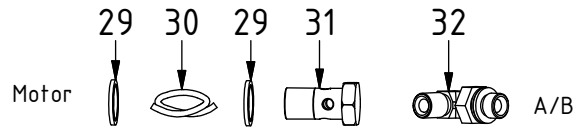
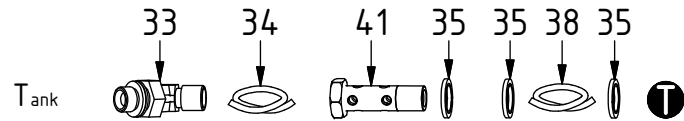
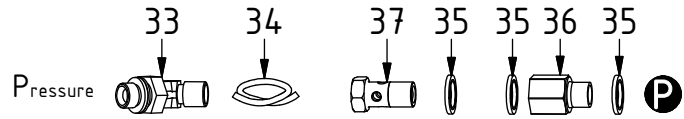
POS	DESCRIPTION	PART	QTY	COMMENTS
1	Swivel & block w. slip ring Compl.	1062975	1	For EC204 with sensors
2	Swivel & block w/o slip ring Compl.	1028504	1	
3	Valve plate	1031620	1	
4	Valve block	1027945	1	
5	Mounting block Central lubrication	1031608	1	
6	O-ring 7,65x1,78	710960	20	
7	Directional valve NG4 IQS 12V DT	1042047	1	For CW, ss SIQ, EC204 with sensors (POS.6, 8-9 incl.)
8	Coil IQS 12V DT	1042065	1	
9	Nut 1/2"	6000169	1	
10	Screw MC6S M5x40 12.9	610405	3	Torque: 9,7Nm
11	Directional valve NG4 12V DT	7000099	1	(POS.6, 12, 16 incl.)
12	Coil 12V NG4 On/Off DT	7000897	2	
13	Direct. valve NG4 Prop Tilt 12V DT	7000100	1	(POS.6, 15-16 incl.)
14	Direct. valve NG4 Prop Rot 12V DT	7000103	1	(POS.6, 15-16 incl.)
15	Coil 12V NG4 DT	7000205	4	
16	Nut directional valve NG4	1006785	6	
17	Screw MC6S M5x35 12.9	610404	10	Torque: 9,7Nm. QTY: 14 for S40
18	Directional valve NG4 Lock 12V DT	7000102	1	For S40. (POS.6, 12, 16 incl.)
19	Valve spacer M5x35	1054687	2	Torque: 9,7Nm
20	Mounting plate 3x Deutsch NG4	1069580	1	
21	Screw MC6S M5x16 12.9	610401	2	
22	Valve block tilt cylinder Complete	7000635	1	(POS.23 incl.)
23	Overcenter valve CBCHXXN41-47Nm	7000647	2	(Only compatible with current block)
24	Washer NL 8mm	611040	8	QTY: 4 part of make up
25	Screw MC6S M8x50 12.9	610439	4	
26	Tilt cylinder EC204	1029849	1	Part of top part
27	Plug 70125-06 (3/8")	711504	1	
28	Adapter 136-06-06 (3/8")	710106	1	QTY: 2 for Feed Left and for ECO
29	Washer GBR06 3/8	710703	5	QTY: 6 for Feed Left and for ECO
65	Protective cover EC204 Right QS40	1062212	1	Part of make up
66	Protective cover EC204 Left QS40	1062218	1	Part of make up
67	Screw M6S M8x16 8,8 FZB	610122	4	Part of make up

POS in order of assembly

Hoses

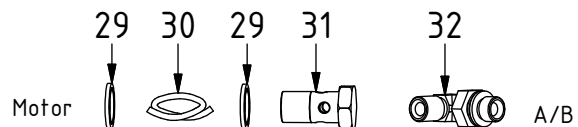
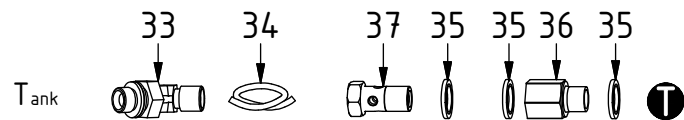
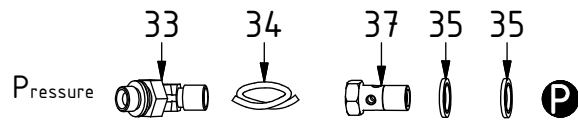
Feed Right+Left

(Std for S40S, CW05GP)

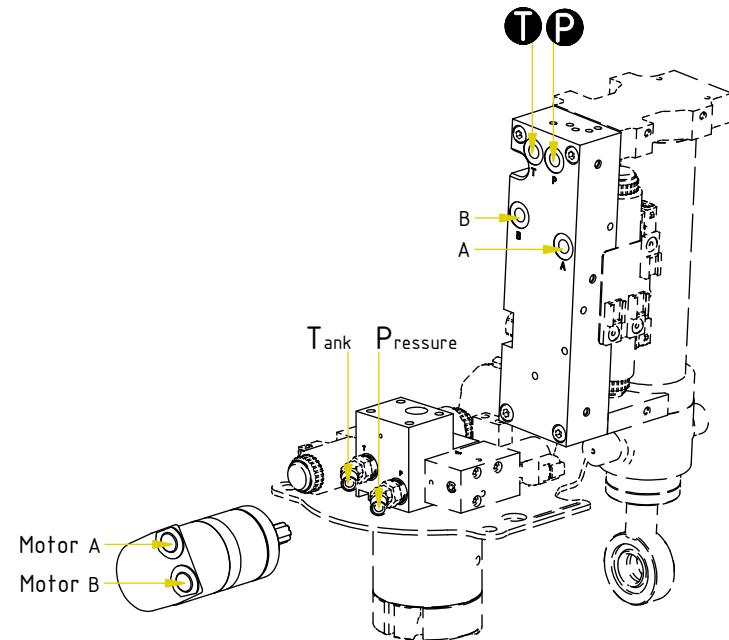


Feed Left

(Std for S40, HS, CW05EC)



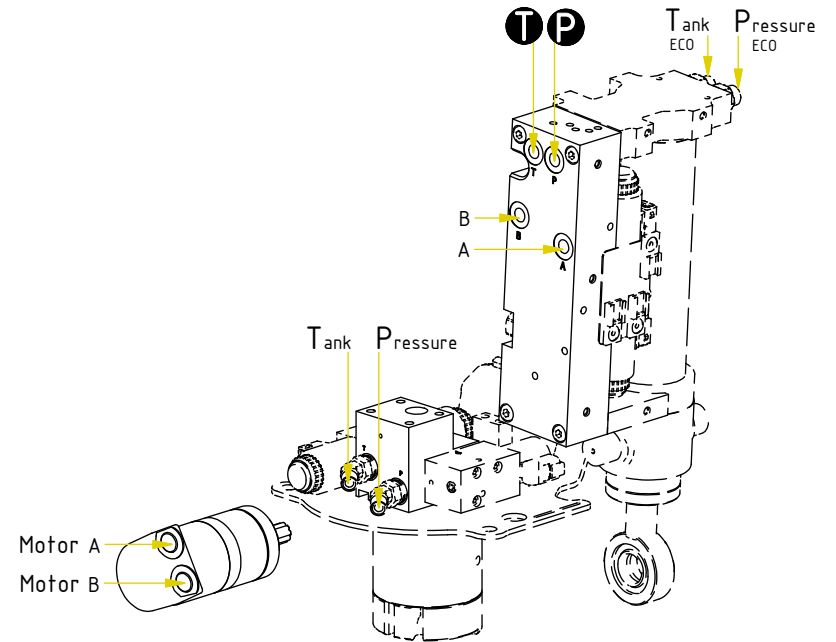
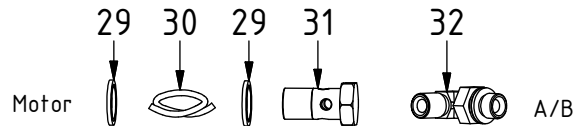
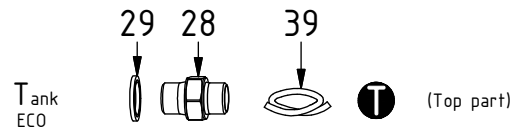
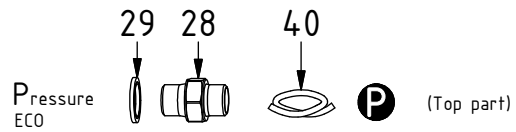
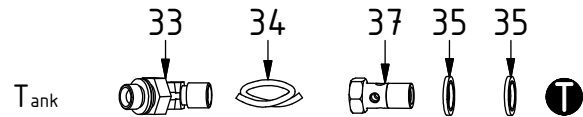
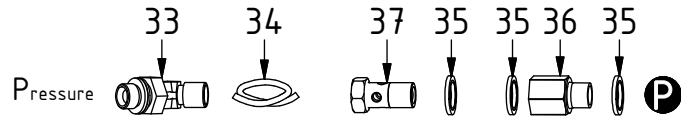
POS	DESCRIPTION	PART	QTY	COMMENTS
29	Washer GBR06 3/8	710703	5	QTY: 6 for Feed Left and for ECO
30	Hose hydraulic motor	7000107	2	
31	Banjo bolt 4451-06 (3/8")	710272	2	
32	Adapter 401-04-04 90° (1/4")	710151	2	
33	Adapter 45° 402-04-04(1/4")	7000104	2	
34	Hose Feed (block)	7000108	2	
35	Washer GBR04 1/4	710702	6	QTY: 5 for Feed Left and for ECO
36	Adapter 236-04-04 (1/4")	1013885	1	
37	Banjo bolt 4451-04 (1/4")	710271	1	QTY: 2 for Feed Left and for ECO
38	Hose Feed T (top part)	7000584	1	
41	Banjo bolt extended 4450-04 (1/4")	712214	1	



POS in order of assembly

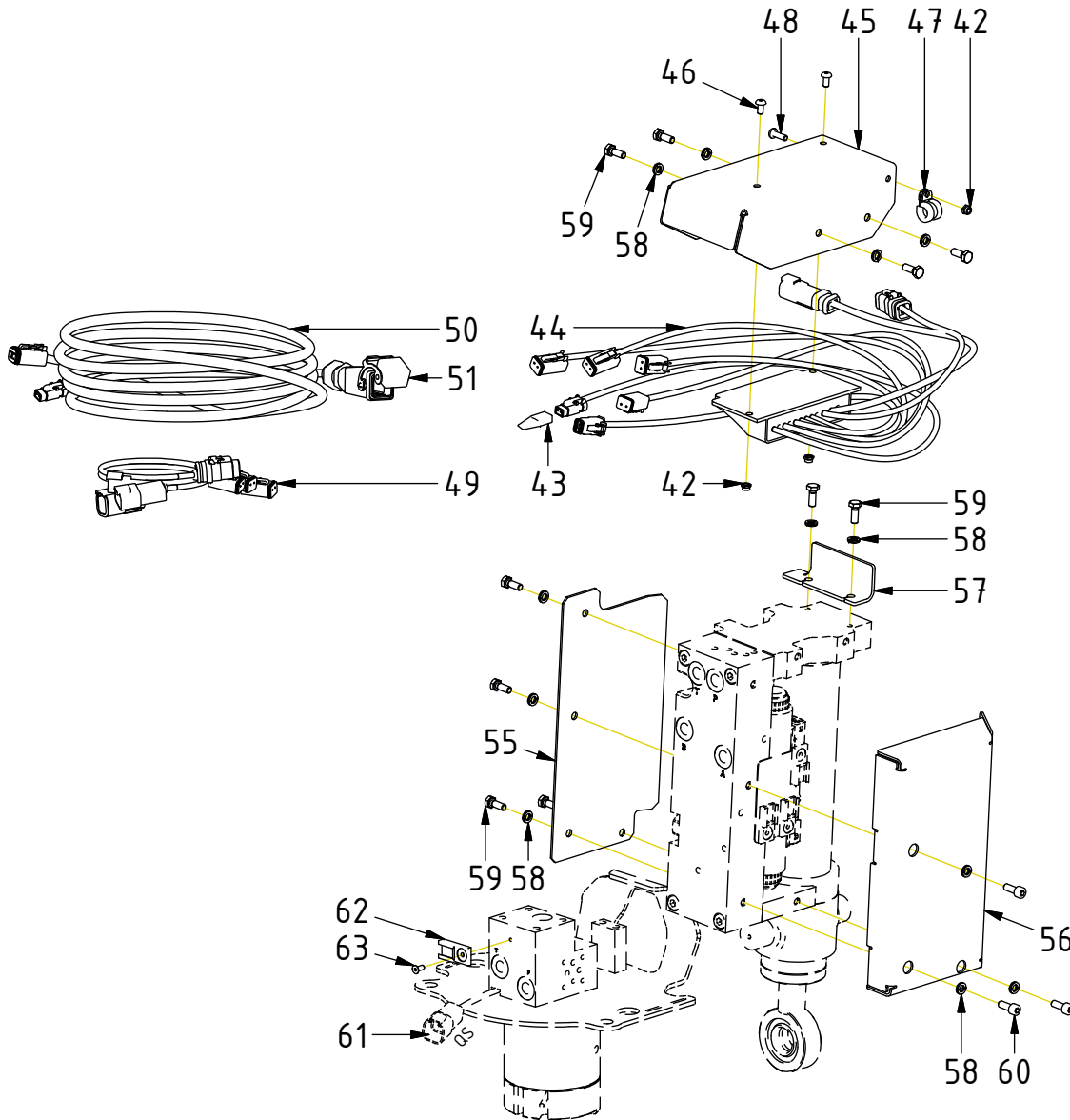
Hoses EC-Oil

POS	DESCRIPTION	PART	QTY	COMMENTS
28	Adapter 136-06-06 (3/8")	710106	1	QTY: 2 for Feed Left and for ECO
29	Washer GBR06 3/8	710703	5	QTY: 6 for Feed Left and for ECO
30	Hose hydraulic motor	7000107	2	
31	Banjo bolt 4451-06 (3/8")	710272	2	
32	Adapter 401-04-04 90° (1/4")	710151	2	
33	Adapter 45° 402-04-04(1/4")	7000104	2	
34	Hose Feed (block)	7000108	2	
35	Washer GBR04 1/4	710702	6	QTY: 5 for Feed Left and for ECO
36	Adapter 236-04-04 (1/4")	1013885	1	
37	Banjo bolt 4451-04 (1/4")	710271	1	QTY: 2 for Feed Left and for ECO
39	Hose Feed T ECO (top part)	7001791	1	
40	Hose Feed P ECO (top part)	7001790	1	



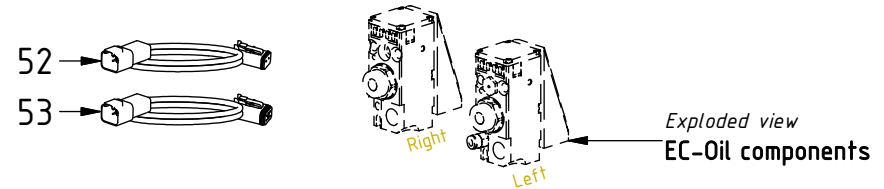
POS in order of assembly

Cables DC2



POS	DESCRIPTION	PART	QTY	COMMENTS
42	Lock Nut M6M M5x0,8 8,8 FZB	610920	3	
43	DTM Jumper QSC connected	8001229	1	Plug DTM connector "1"
44	Tiltrotator modul EC204 DC2 w. QS	8001385	1	
45	Cover tilt cylinder Top	1029902	1	
46	Screw K6S M5x10 10.9 FZB	6000408	2	
47	Rubber steel clamp ø10	6000003	1	Use with agg.cable
48	Screw K6S M5x16 10.9 FZB	611818	1	
49	Joint cable EC204 w. QS	8001373	1	
50	Aggregate cable DC2 Complete QSC	8000763	1	
51	ILME cover 12P contact with jumper	810208	1	(Incl. with agg.cable)
52	Adapter cable ECO40W DC2 QSC	1057843	1	For EC-Oil
53	Joint cable DC2 ECO	8001994	1	For EC-Oil. Instead of agg.cable
55	Cover tilt cylinder Right	1029781	1	
56	Cover tilt cylinder Left	1068975	1	
57	Coverplate	1029826	1	
58	Washer NL 6mm	611039	13	
59	Screw M6S M6x16 10.9 untreated	610109	10	
60	Screw MC6S M6x16 12.9 ZFSL	6000017	3	
61	Only for QS, connector			
62	Holder Deutsch connector	810662	1	
63	Screw MF6S M4x10 10.9 untreated	610605	1	

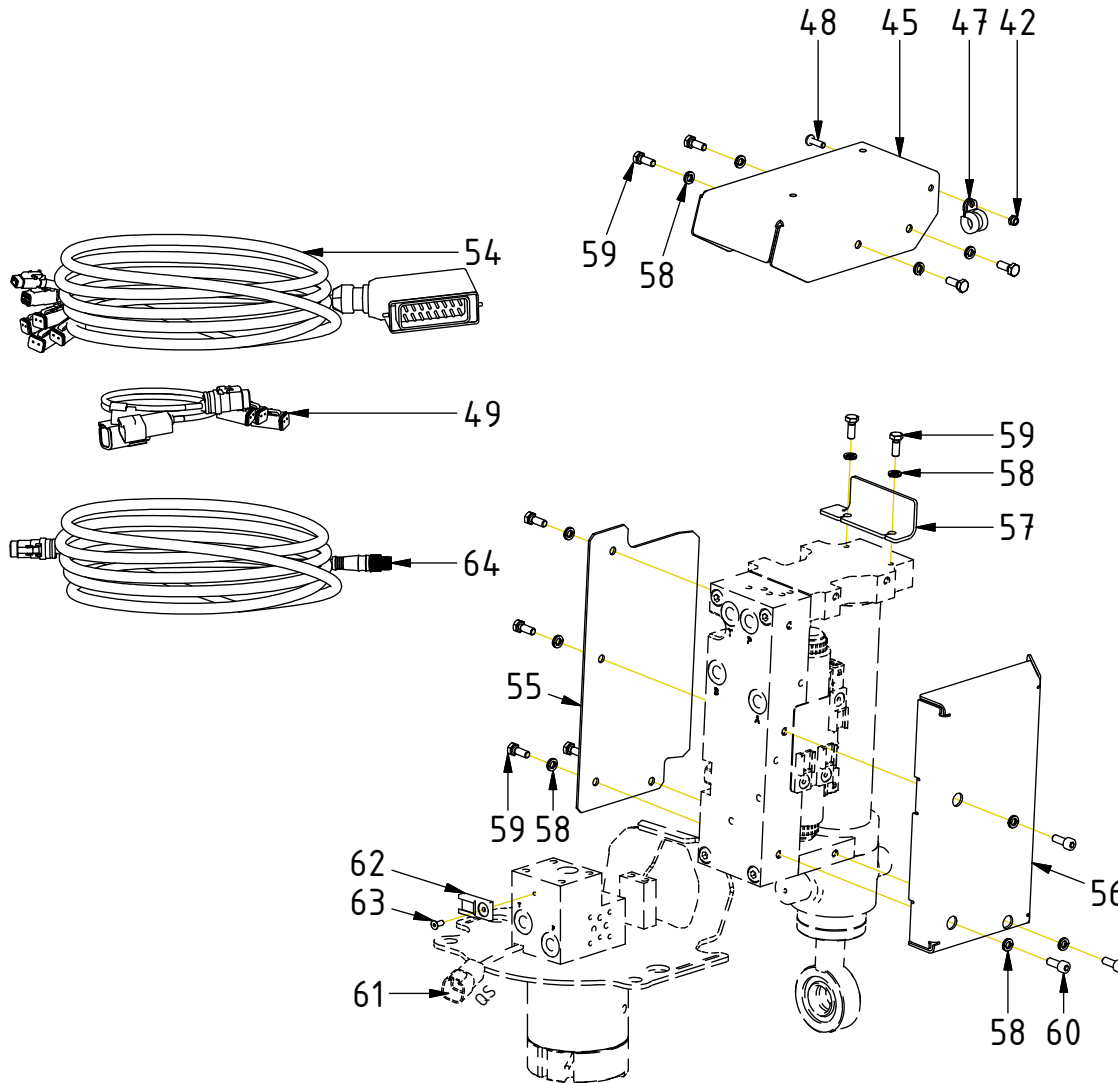
EC-Oil:



POS in order of assembly

Cables

ss10 (SVAB)



POS	DESCRIPTION	PART	QTY	COMMENTS
42	Lock Nut M6M M5x0,8 8,8 FZB	610920	3	
45	Cover tilt cylinder Top	1029902	1	
47	Rubber steel clamp $\varnothing 10$	6000003	1	Use with agg.cable
48	Screw K6S M5x16 10.9 FZB	611818	1	
49	Joint cable EC204 w. QS	8001373	1	
54	Aggregate cable SVAB Complete	1033198	1	
55	Cover tilt cylinder Right	1029781	1	
56	Cover tilt cylinder Left	1068975	1	
57	Coverplate	1029826	1	
58	Washer NL 6mm	611039	13	
59	Screw M6S M6x16 10.9 untreated	610109	10	
60	Screw MC6S M6x16 12.9 ZFSL	6000017	3	
61	Only for QS, connector			
62	Holder Deutsch connector	810662	1	
63	Screw MF6S M4x10 10.9 untreated	610605	1	
64	Cable QS QLM tiltrotator SVAB	842148	1	For QS

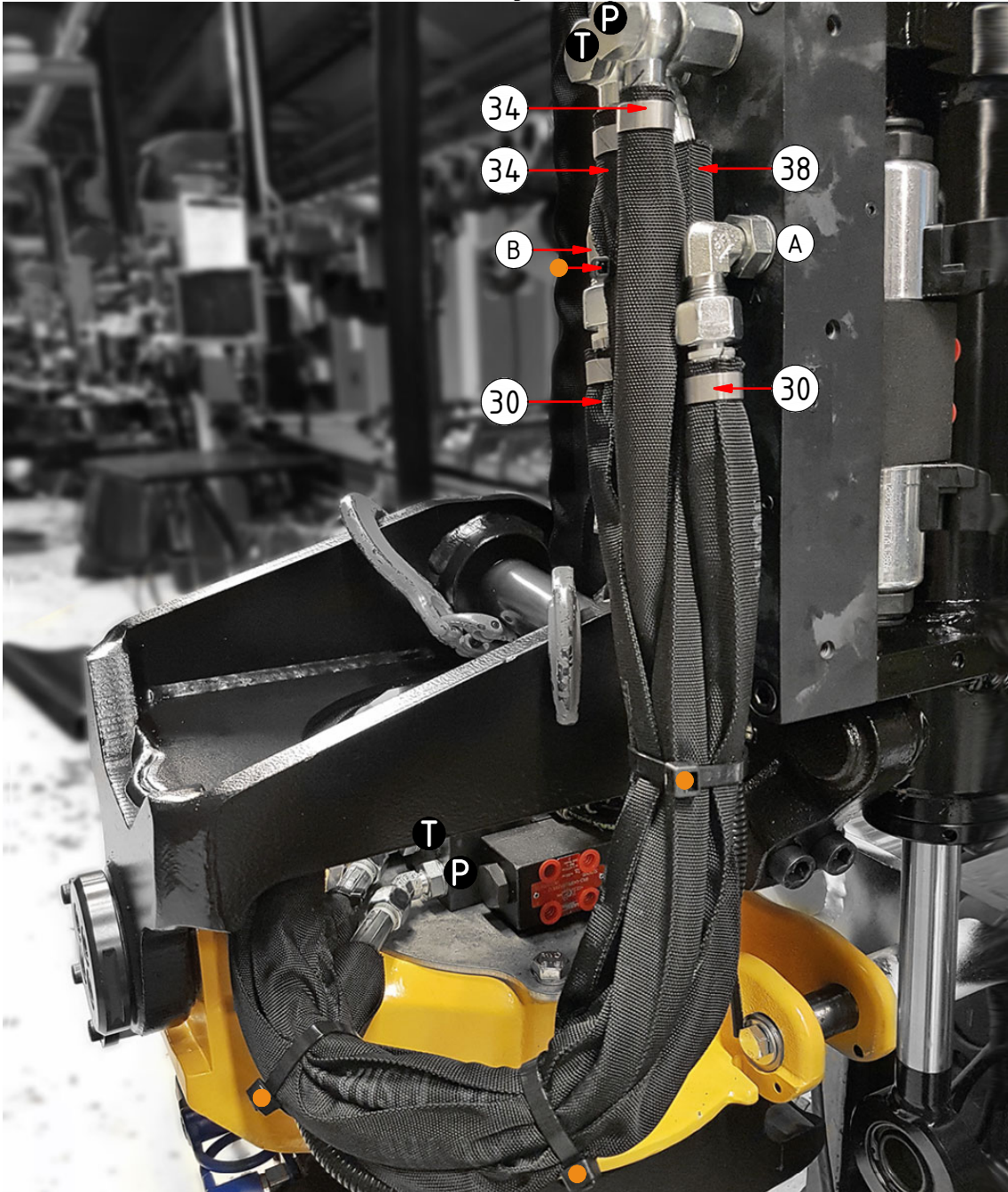
POS in order of assembly

Hoses

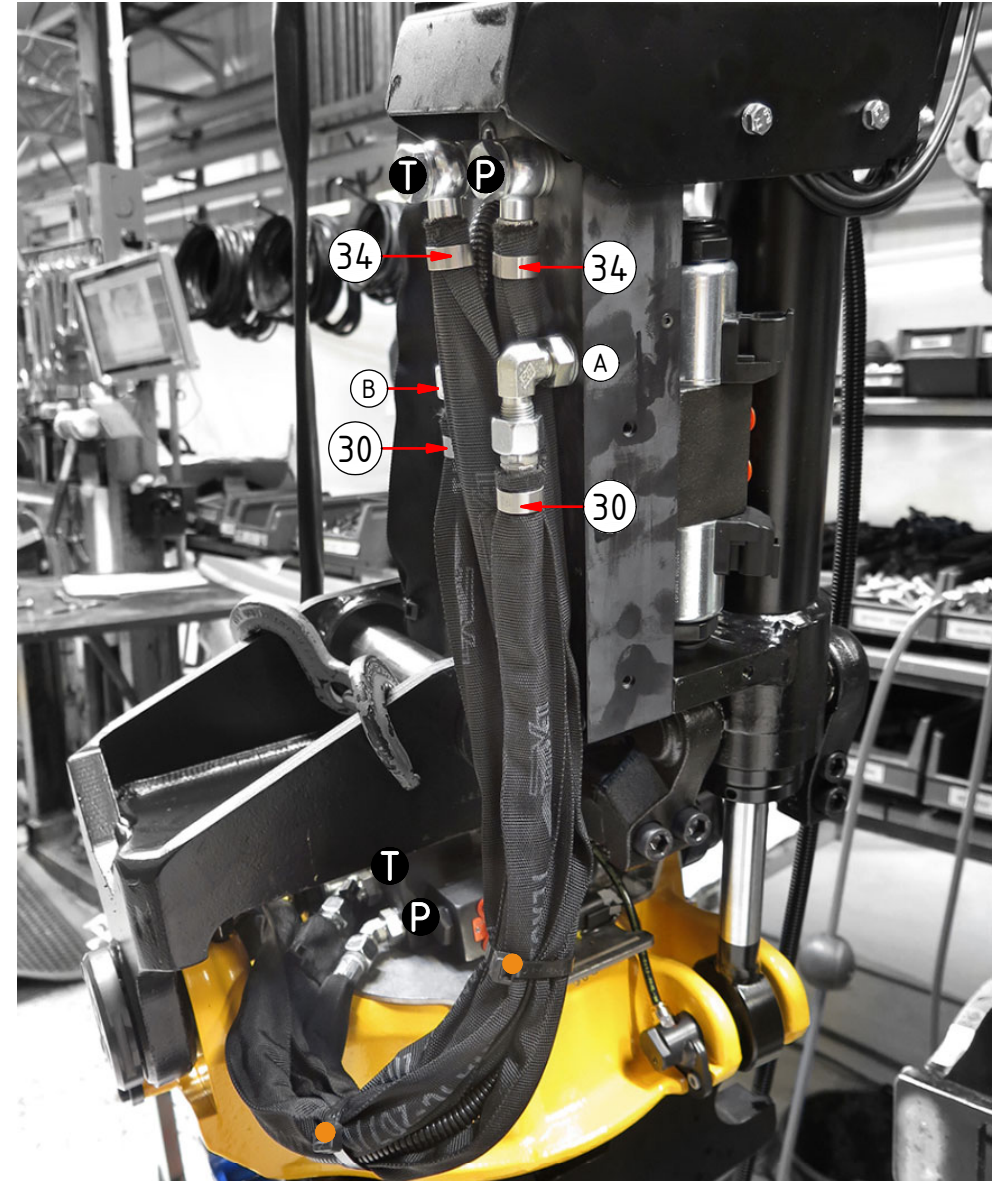
Feed Right+Left

POS	DESCRIPTION	PART	QTY	COMMENTS
30	Hose hydraulic motor	7000107	2	
34	Hose Feed (block)	7000108	2	
38	Hose Feed T (top part)	7000584	1	
● Use cable ties				

POS in order of assembly



Feed Left



Hoses
EC-Oil

POS	DESCRIPTION	PART	QTY	COMMENTS
30	Hose hydraulic motor	7000107	2	
34	Hose Feed (block)	7000108	2	
39	Hose Feed T ECO (top part)	7001791	1	
40	Hose Feed P ECO (top part)	7001790	1	
●	Use cable ties			

POS in order of assembly

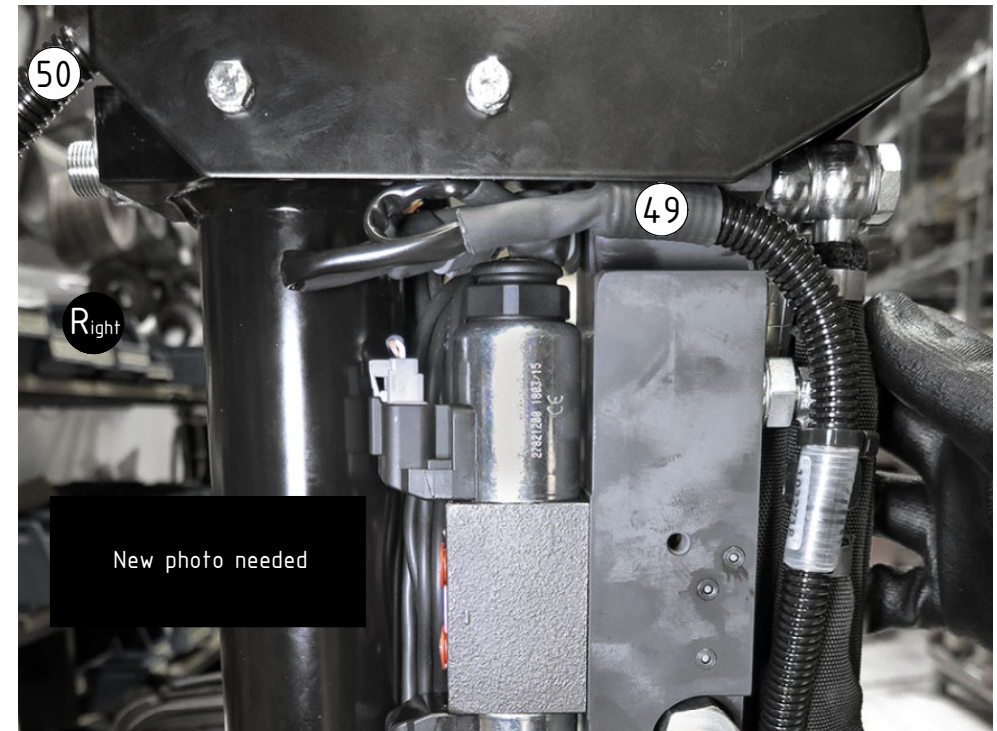
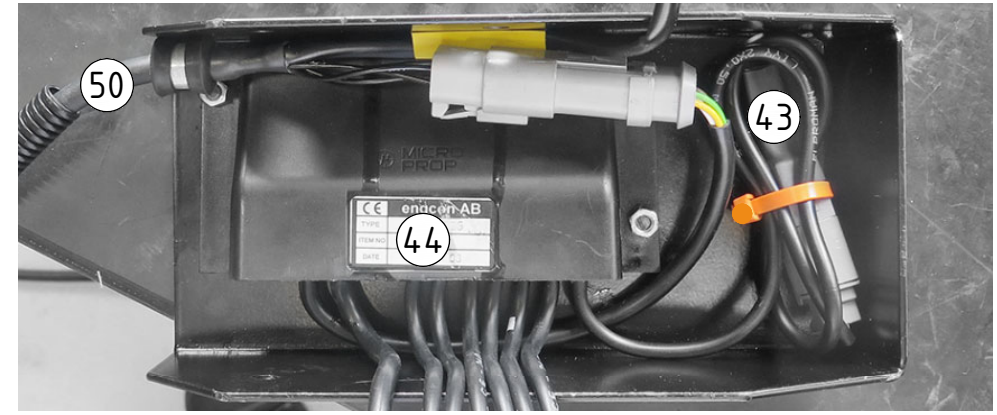


Cables
DC2

POS	DESCRIPTION	PART	QTY	COMMENTS
43	DTM Jumper QSC connected	8001229	1	Plug DTM connector "1"
44	Tiltrotator modul EC204 DC2 w. QS	8001385	1	
49	Joint cable EC204 w. QS	8001373	1	
50	Aggregate cable DC2 Complete QSC	8000763	1	
61	Only for QS, connector			

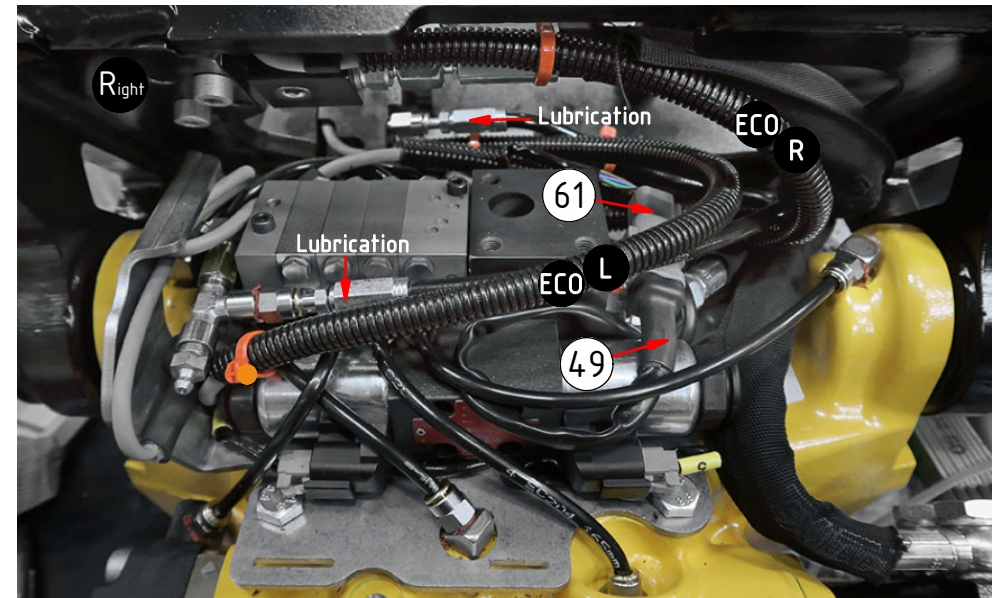
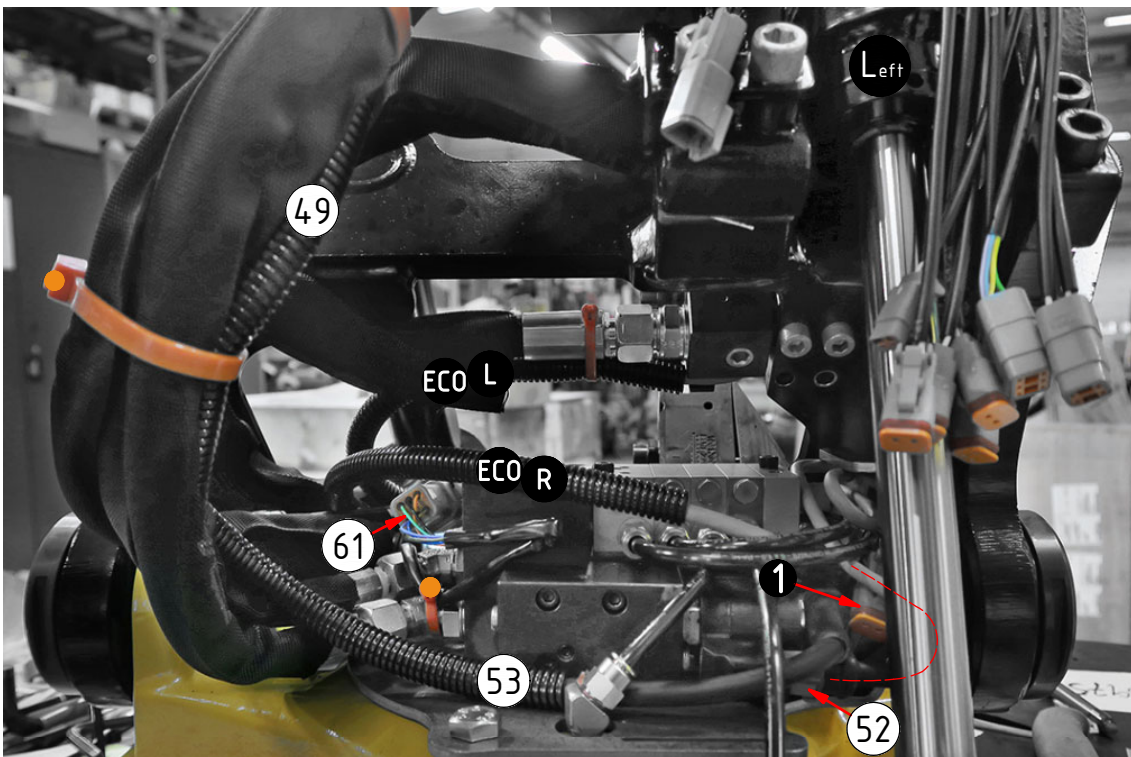
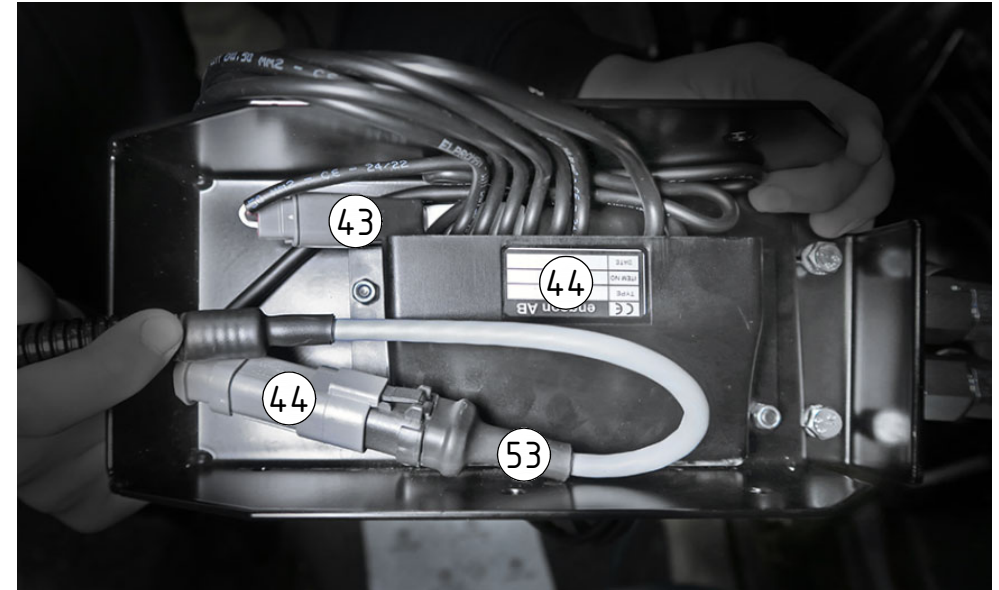
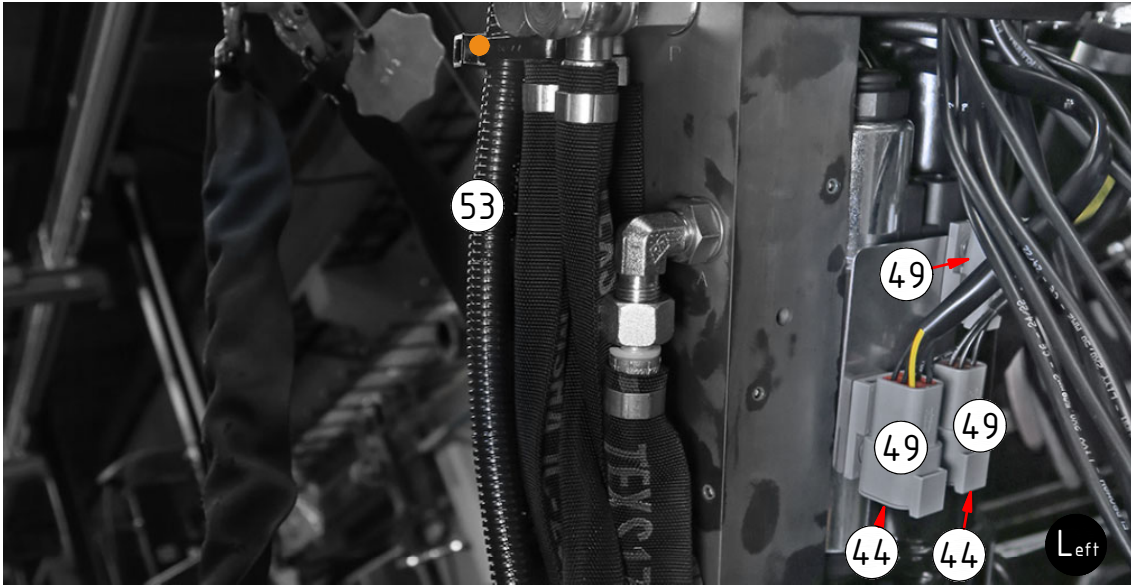
● Use cable ties

POS in order of assembly



Cables DC2 EC-Oil

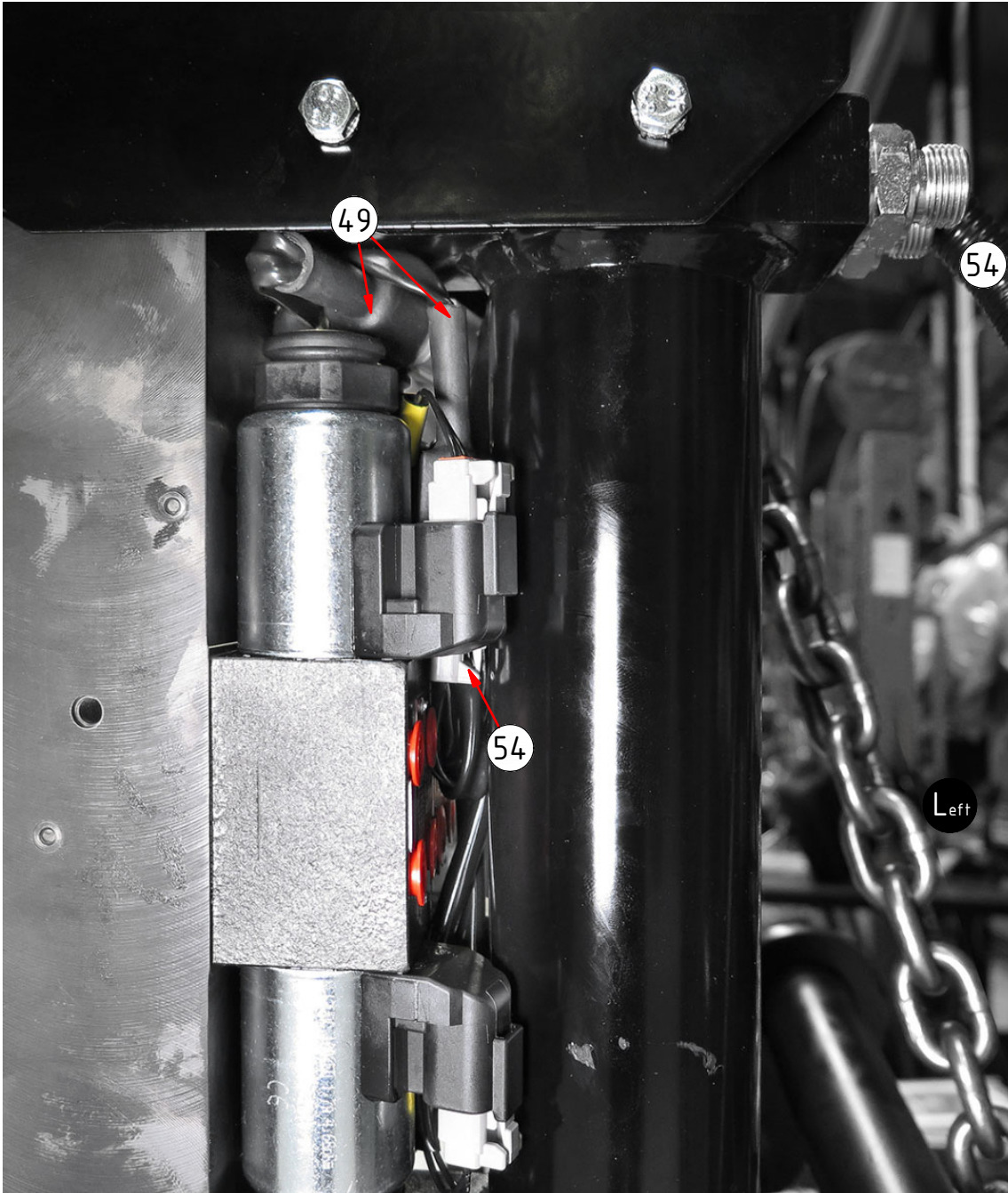
POS	DESCRIPTION	PART	QTY	COMMENTS
43	DTM Jumper QSC connected	8001229	1	Plug DTM connector "1"
44	Tiltrotator modul EC204 DC2 w. QS	8001385	1	
49	Joint cable EC204 w. QS	8001373	1	
52	Adapter cable ECO40W DC2 QSC	1057843	1	For EC-Oil
53	Joint cable DC2 ECO	8001994	1	For EC-Oil. Instead of agg.cable
61	Only for QS, connector			
●	Use cable ties			



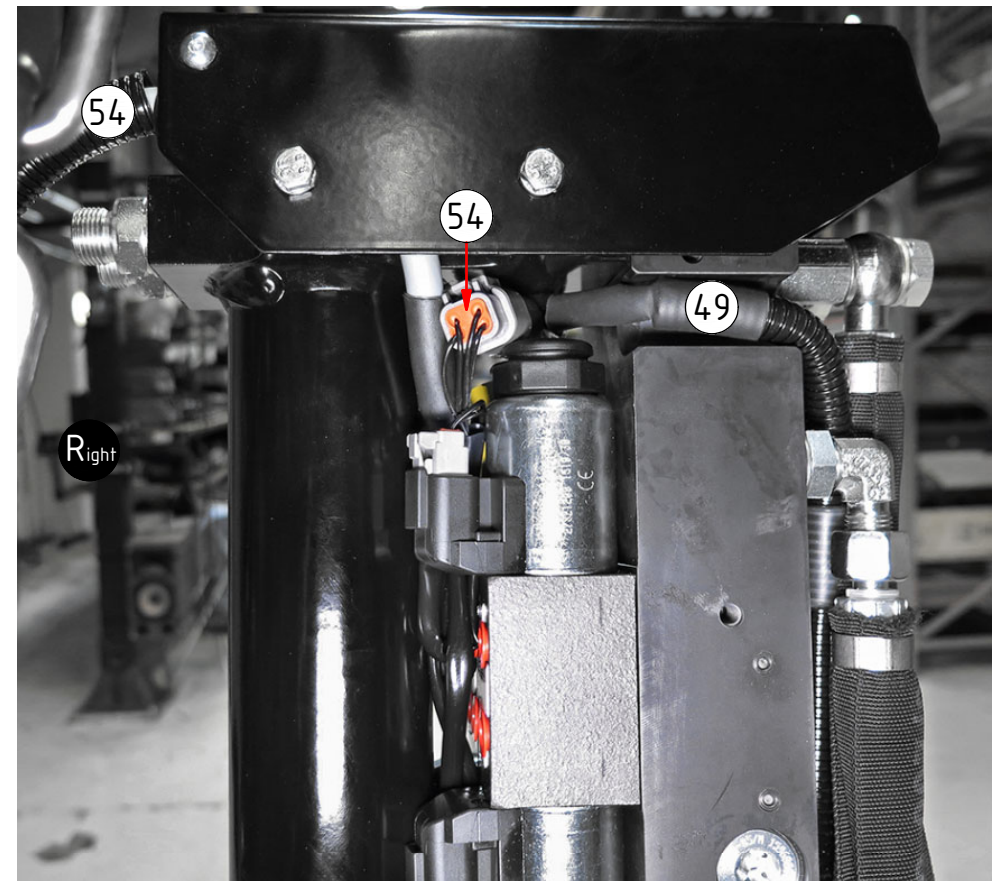
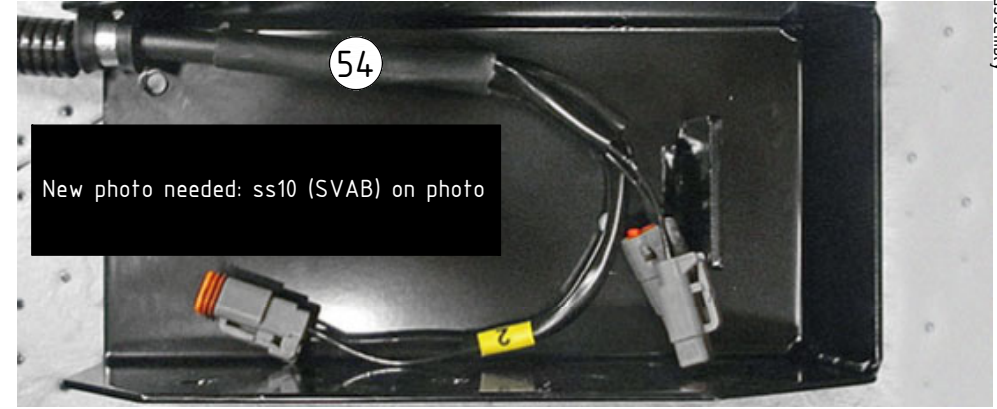
POS in order of assembly

Cables
ss10 (SVAB)

POS	DESCRIPTION	PART	QTY	COMMENTS
49	Joint cable EC204 w. QS	8001373	1	
54	Aggregate cable SVAB Complete	1033198	1	
64	Cable QS QLM tiltrotator SVAB	842148	1	For QS



Left



Right

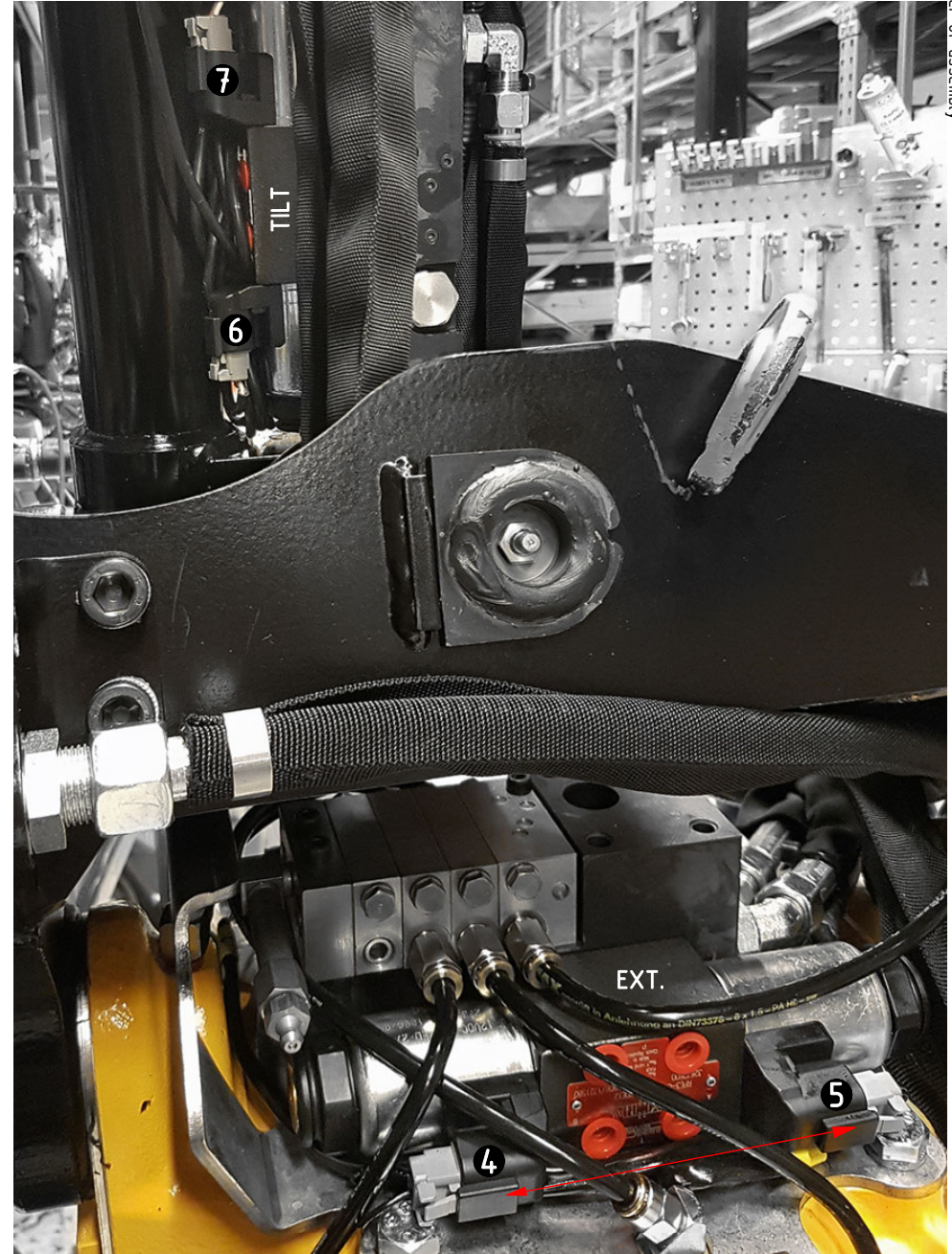
POS in order of assembly

Valves

POS	DESCRIPTION	PART	QTY	COMMENTS
-----	-------------	------	-----	----------



ECO: see p.10 for "1" and for LOCK



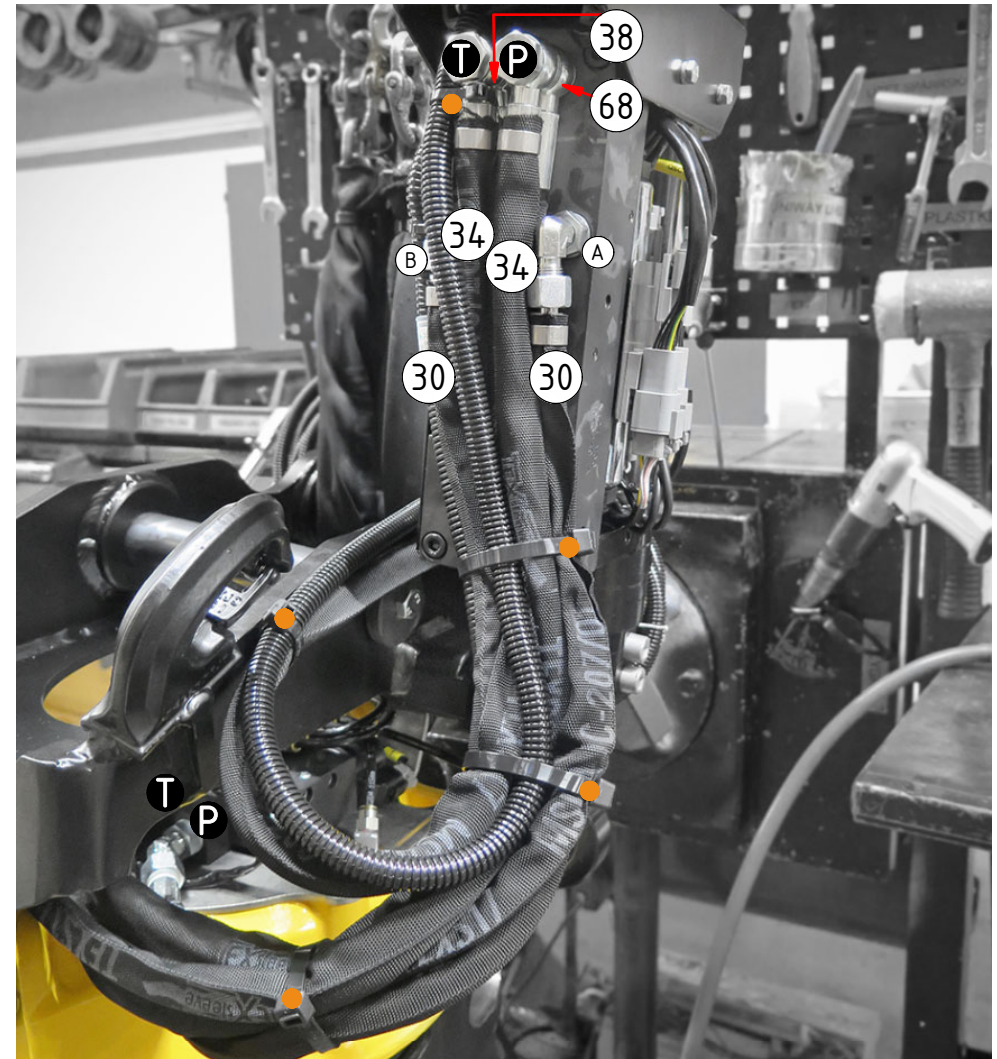
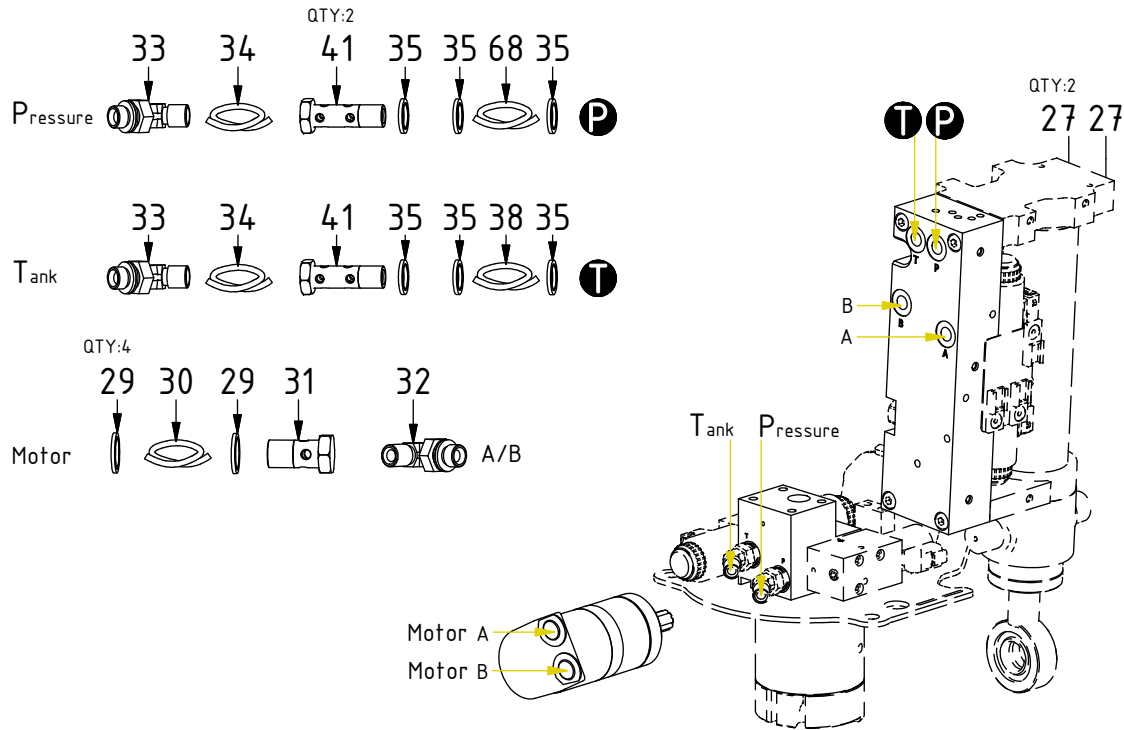
4 & 5 switch place when NOT equipped to hold grab adapter or grab cassette.

POS in order of assembly

SPARE PARTS

Option "With terminals"

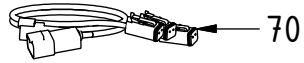
POS	DESCRIPTION	PART	QTY	COMMENTS
27	Plug 70125-06 (3/8")	711504	1	
29	Washer GBR06 3/8	710703	5	QTY: 6 for Feed Left and for ECO
30	Hose hydraulic motor	7000107	2	
31	Banjo bolt 4451-06 (3/8")	710272	2	
32	Adapter 401-04-04 90° (1/4")	710151	2	
33	Adapter 45° 402-04-04(1/4")	7000104	2	
34	Hose Feed (block)	7000108	2	
35	Washer GBR04 1/4	710702	6	QTY: 5 for Feed Left and for ECO
38	Hose Feed T (top part)	7000584	1	
41	Banjo bolt extended 4450-04 (1/4")	712214	1	
68	Hose Feed P (top part)	7001172	1	



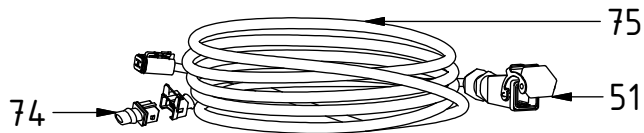
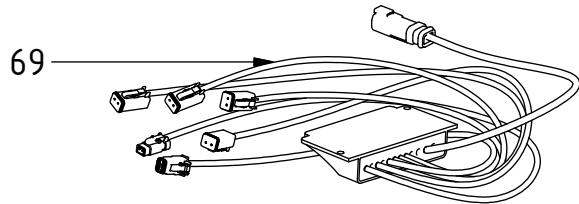
Parts history on p.14

POS in order of assembly

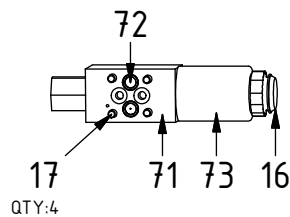
SPARE PARTS



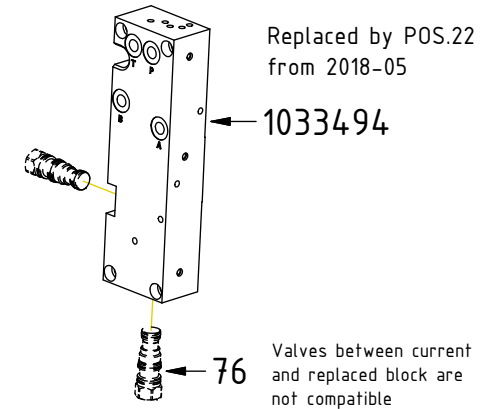
DC2:



XP:



POS	DESCRIPTION	PART	QTY	COMMENTS
16	Nut directional valve NG4	1006785	6	
17	Screw MC6S M5x35 12.9	610404	10	Torque: 9,7Nm. QTY: 14 for S40
22	Valve block tilt cylinder Complete	7000635	1	(POS.23 incl.)
23	Overcenter valve CBCHXXN41-47Nm	7000647	2	(Only compatible with current block)
44	Tiltrotator modul EC204 DC2 w. QS	8001385	1	
50	Aggregate cable DC2 Complete QSC	8000763	1	
51	ILME cover 12P contact with jumper	810208	1	(Incl. with agg.cable)
69	Tiltrotator modul EC204 DC2 w/o QS	1033055	1	Replaced by POS.44 from 2022-11
70	Joint cable EC204 w/o QS	1032718	1	Used until 2023-02
71	Directional valve XP crossparallel NG4 without Coil	730321	1	Nut (POS.16) and o-ring with choke-valve incl.
72	Plug Dysa D0 for NG4 / VRP2-04	790191	1	O-ring incl.
73	Coil NG4 12V JT	730313	2	
74	JT Plug	1045154	1	
75	Agg. cable DC2 Complete QSC (JT)	8000175	1	Replaced by POS.50 from 2019-05
76	Overcenter valve RJV	790142	2	Used until 2018-05



POS in order of assembly