

COVERSHEET

Planned document changes:

Briefly:

No planned changes.

Document changes:

Date:

Change:

Rev.

after change:

2019-01-11

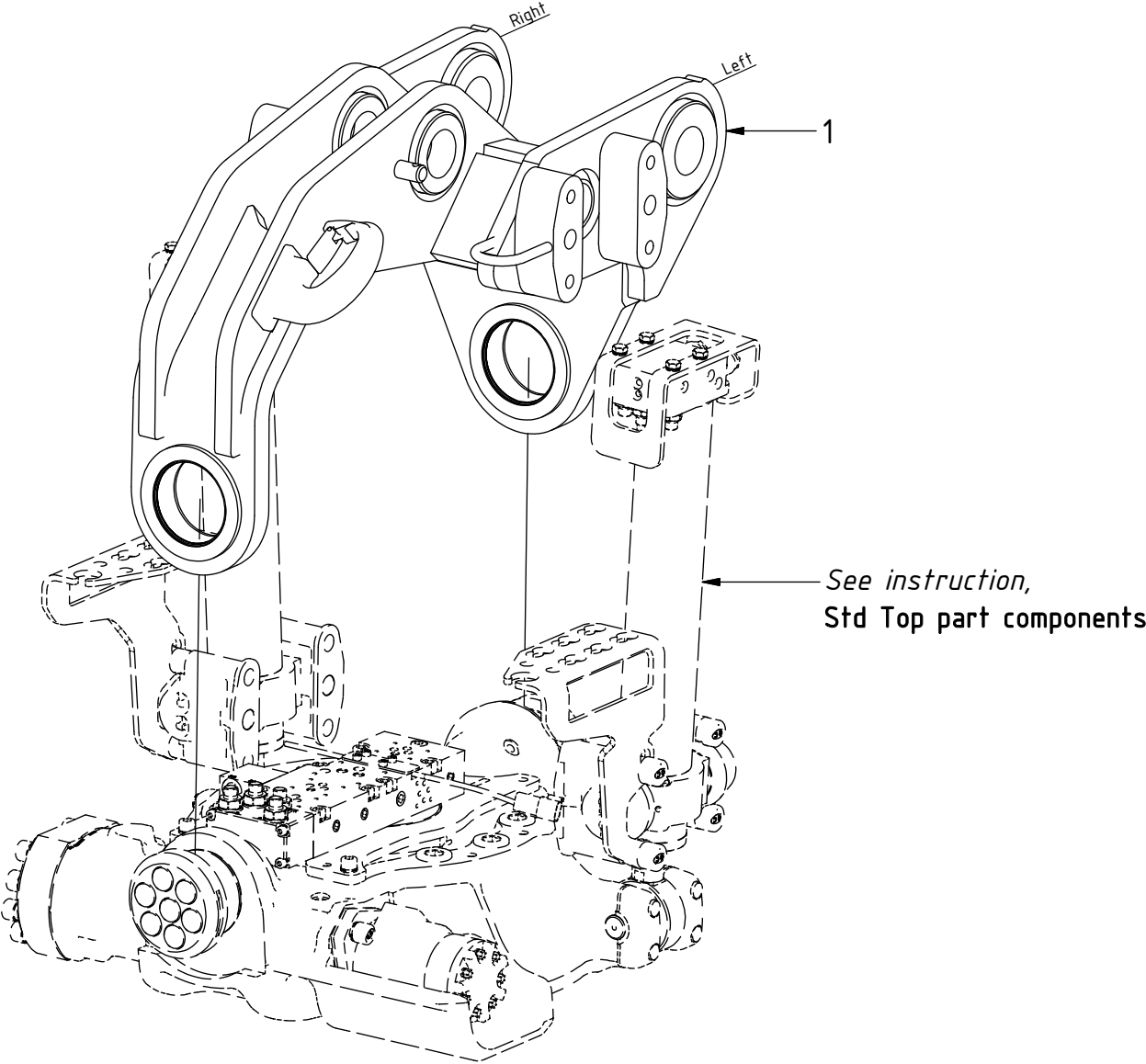
New instruction.

-

EC214 - Huddig Top part

POS	DESCRIPTION	PART	QTY	COMMENTS
1	Top part Huddig 1160 EC214	1025258	1	

POS in order of assembly



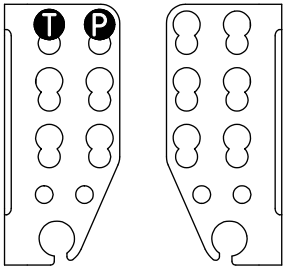
- P = 2
- T = 2
- R = 6
- L = 10
- tilt = 6
- G = 6

FEED:

1/2" (Std)

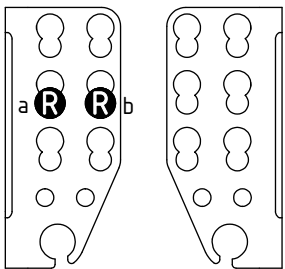
Main feed

Standard



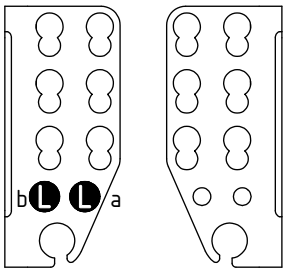
Rotation

Standard



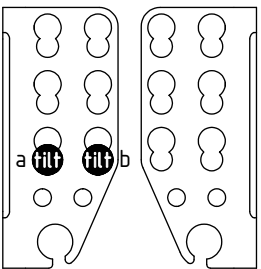
Lock (SQ)

Standard



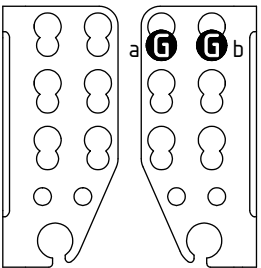
Tilt (ST)

Standard



Grab (SG)

Standard



POS	DESCRIPTION	PART	QTY	COMMENTS
2	Use washer, adapter, nut according to POS.3, 4, 5			
3	Washer NL 20mm	611098	2	
4	Adapter 1260-08-08 (1/2")	710244	2	
5	Check nut 1270-08 (1/2")	710254	2	
6	Use washer, adapter, nut according to POS.7, 8, 9			QTY depends on terminal holes (2-6)
7	Washer NL 16mm	611044	4	
8	Adapter 1260-06-32 (3/8")	710242	4	
9	Check nut 1270-06 (3/8")	710252	4	
10	Use washer, adapter, nut according to POS.11, 12, 13		1	
11	Washer NL 1/2"	611096	2	
12	Adapter 1260-04-04 (1/4")	710240	2	
13	Check nut 1270-04 (1/4")	710250	2	
14	Attach feed hoses from control system			(a & b represents channels on feed block)

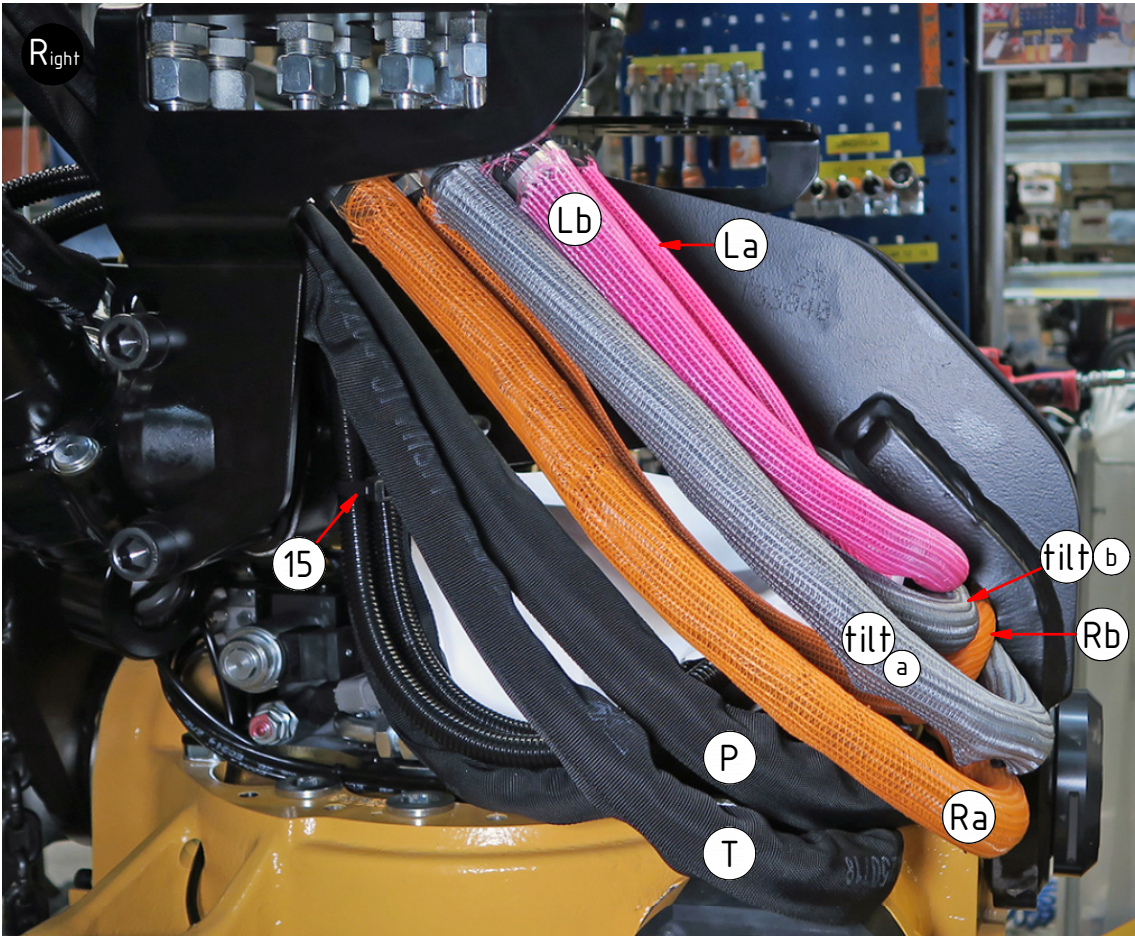
EC214 - Huddig Top part

FEED:

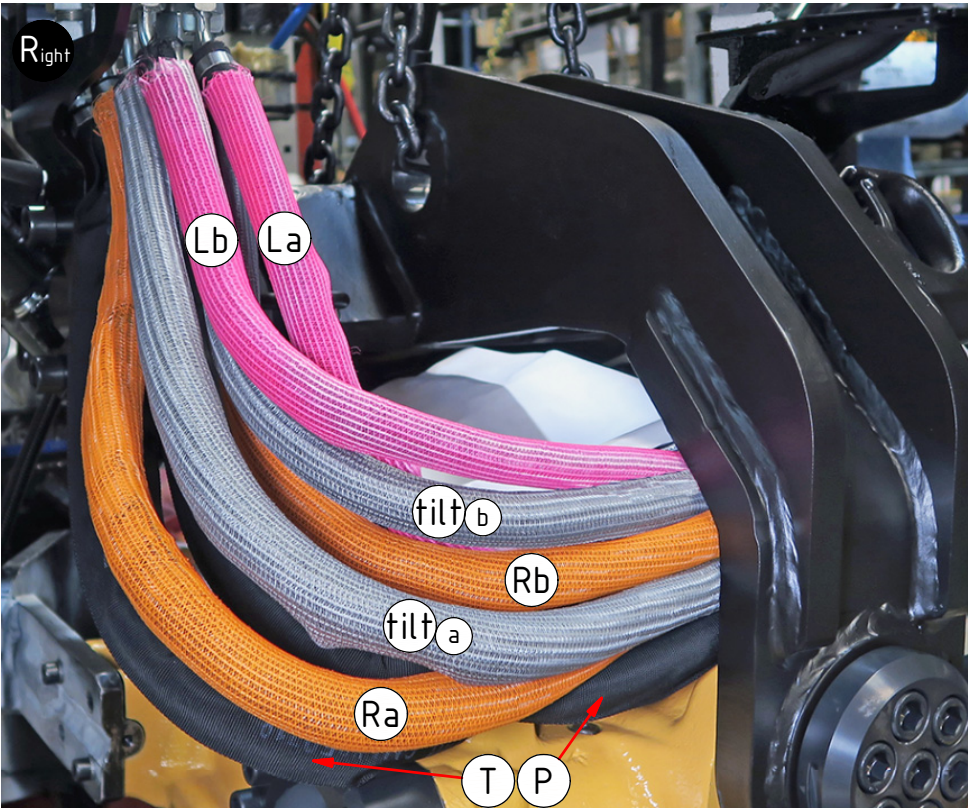
1/2" (Std)

POS	DESCRIPTION	PART	QTY	COMMENTS
14	Attach feed hoses from control system			(a & b represents channels on feed block)
15	Cable tie 7,8x360	1021587	1	

POS in order of assembly



Hoses depends on configuration.



Hoses depends on configuration.

EC214 - Huddig Top part

FEED:

1/2" (Std)
(Feed Grab)

POS	DESCRIPTION	PART	QTY	COMMENTS
14	Attach feed hoses from control system			(a & b represents channels on feed block)

POS in order of assembly

