

## COVERSHEET

## Planned document changes:

**Briefly:**

---

No planned changes.

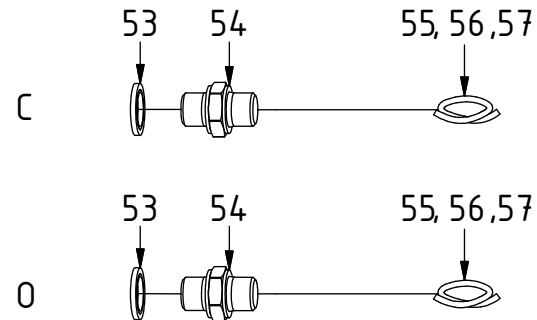
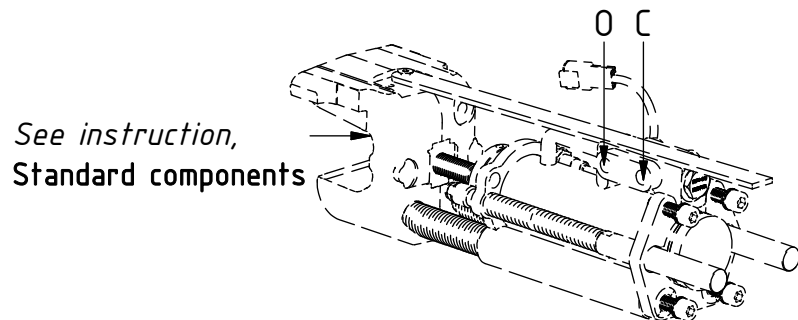
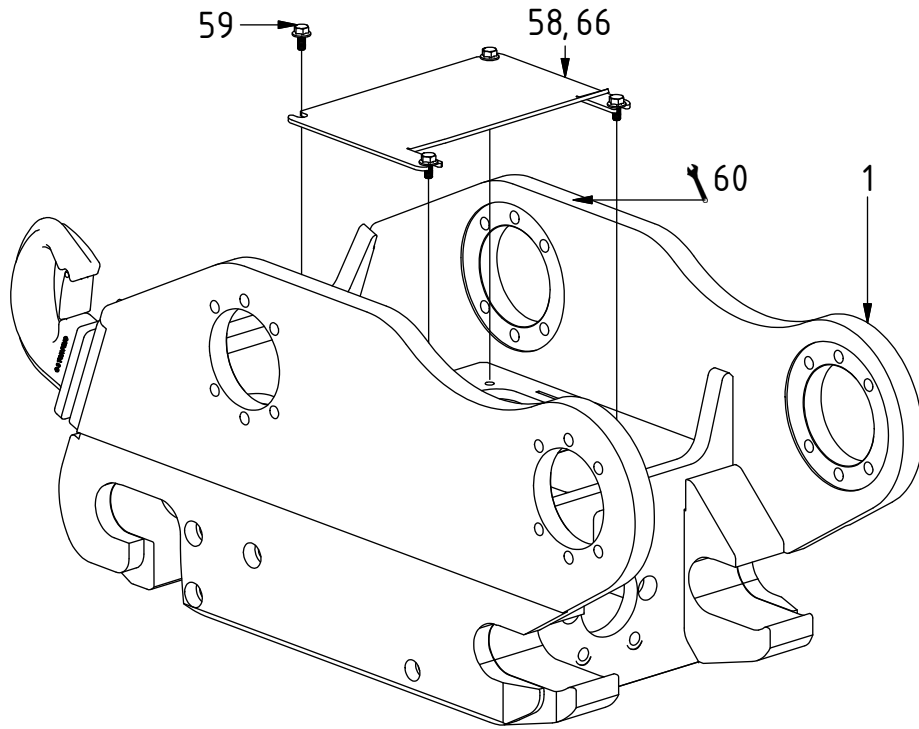
## Document changes:

<b>Date:</b>	<b>Change:</b>	<b>Rev. after change:</b>
2020-01-16	Spare parts and cover updated.	C
2019-12-10	EC050 W magnetic covers added.	B
2019-11-22	EC-Oil ePS cables added. Spare parts added.	A
2018-08-15	New instruction.	-

# Quick hitch - QS45/QS50

POS	DESCRIPTION	PART	QTY	COMMENTS
1	Quick hitch is selected via engcon			(Machine dependent)
53	Washer GBR04 1/4"	710702	2	
54	Adapter 138-04-29 1/4"	710135	2	
55	Hose Lock	741505	2	
56	Hose Lock Liebherr	7000560	2	
57	Hose Lock Lännen	7000561	2	
58	Cover QS45 V3	1053624	1	
59	Screw M6SF 8x12H Riffled	6000120	4	
60	Punch serial number into hitch			
66	Cover QS45/QS50	1025581	1	Only for QS50 from 2019-10

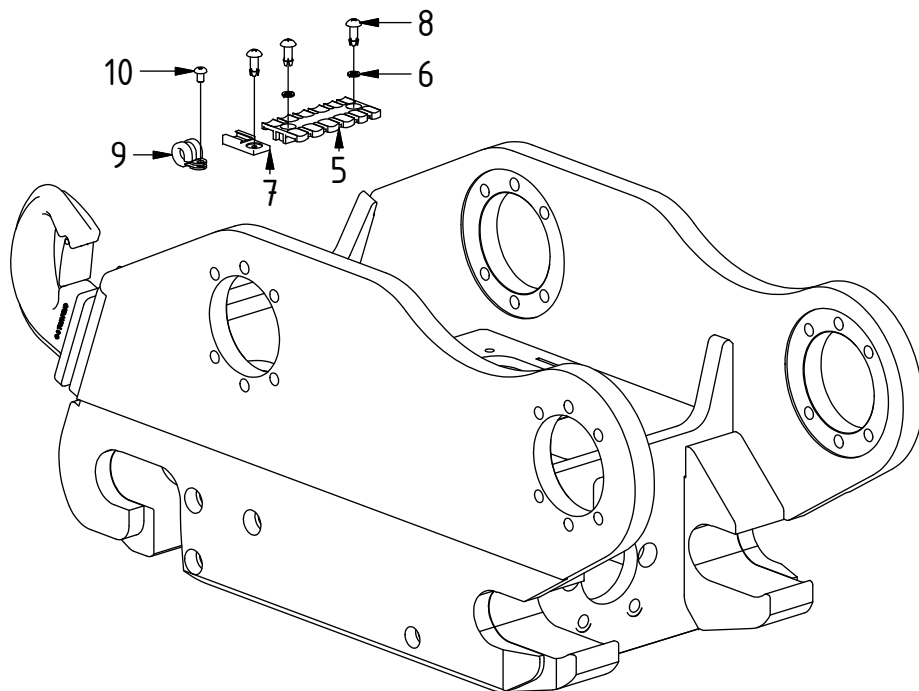
POS in order of assembly



# Quick hitch - QS45/QS50

Without EC-Oil

POS	DESCRIPTION	PART	QTY	COMMENTS
4	Cable QS-QLM-Quick hitch	842149	1	Attach to QS sensors
5	Strain relief plate ZL87	8000704	2	
6	Washer M5	611004	4	
7	Holder Deutsch coupling	810662	6	
8	Blind rivet 4,8x16 DIN7337	6000115	10	
9	Rubber steel clamp ø6	6000027	1	
10	K6S M5x8 10.9 FZB	611801	1	

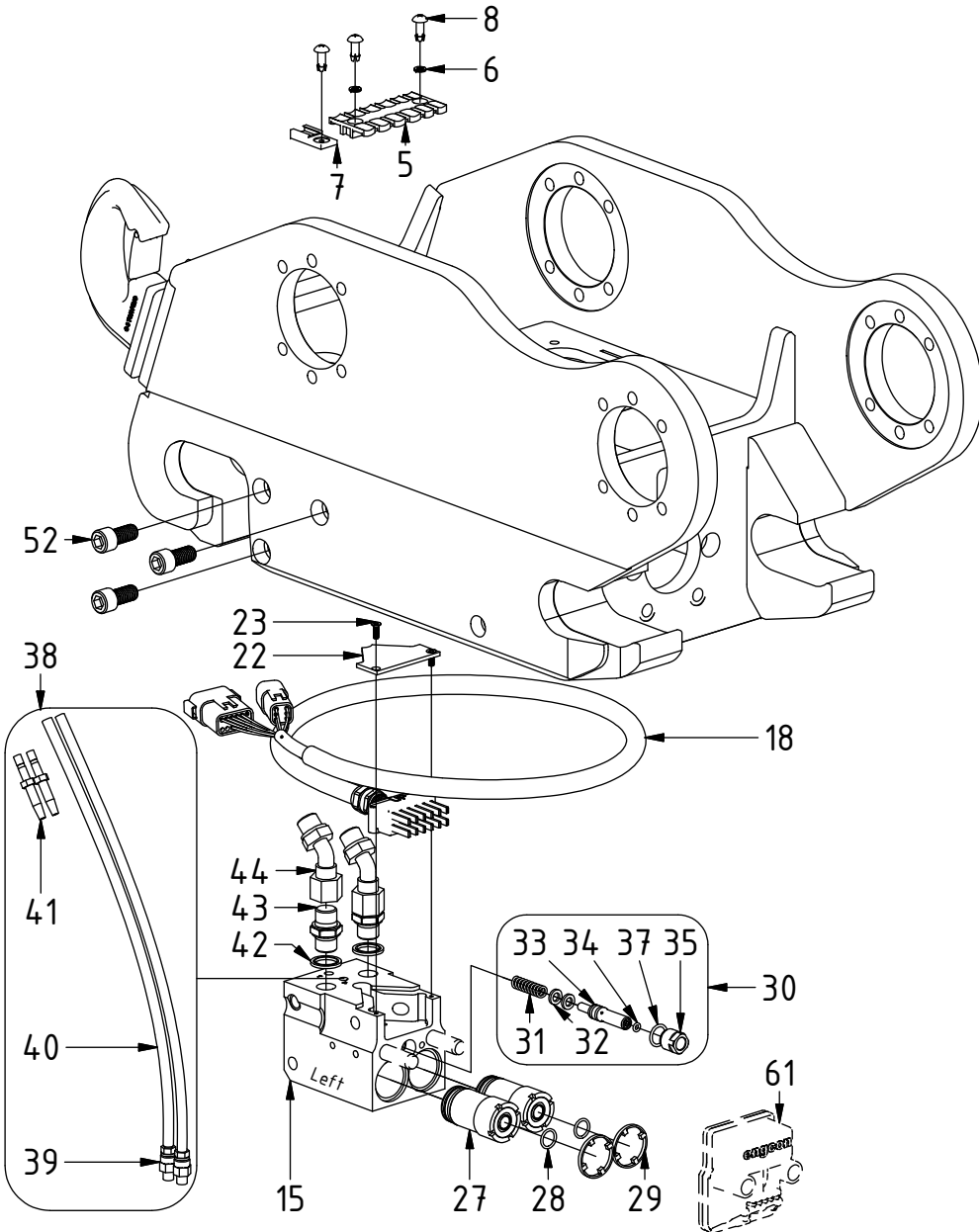


Cables QS:



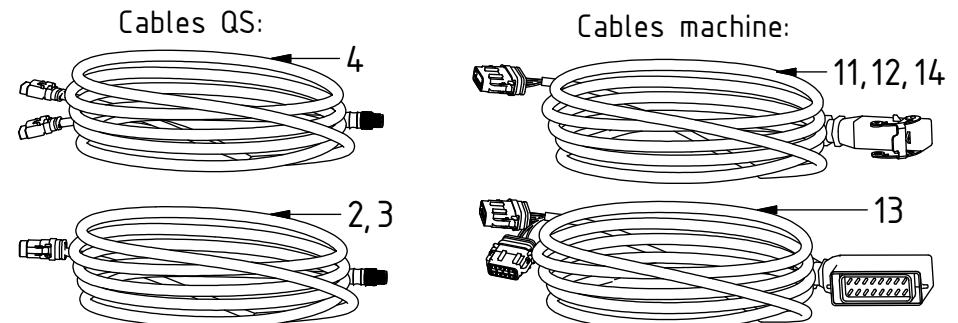
# Quick hitch - QS45/QS50

EC-Oil QS45/QS50  
Left block (Std)



POS	DESCRIPTION	PART	QTY	COMMENTS
2	Cable ECO W Tilt angle sensor DC2	1049315	1	Attach to POS.18 6P (Only DC2)
3	Cable QS-QLM-Tiltrotator-ss9,svab	842148	1	Attach to POS.18 6P (Not on DC2)
4	Cable QS-QLM-Quick hitch	842149	1	Attach to QS sensors
5	Strain relief plate ZL87	8000704	2	
6	Washer M5	611004	4	
7	Holder Deutsch coupling	810662	6	
8	Blind rivet 4,8x16 DIN7337	6000115	10	
11	Cable ECO60 W Machine DC2	1048527	1	Attach to POS.18 12P
12	Cable ECO60 Machine ss9-2	1036846	1	Attach to POS.18 12P
13	Cable ECO60 Machine ss10(SVAB)	1029500	1	Attach to POS.18 12P (QS50: 18&19)
14	Cable ECO60 W Machine MACS	1043276	1	Attach to POS.18 12P
15	Block ECO45/50 W-Quick hitch	1042479	1	(POS.17 included)
17	Dowel pin CPK ø12x55 m6	650220	2	
18	Power Plug ECO45/50 W DTM	1042244	1	
22	Coverplate block ECO45 W	1041098	1	
23	Screw MKFT 4x12	6000121	2	
27	Coupling ECO45/50 W 3/8" female	1025586	2	Torque: 60Nm. (POS.28 included)
28	O-ring 12,42x1,78 PU - ECO45 3/8"	712417	2	Separate seal kit: 7000045
29	Dirt protection block ECO 3/8"	1028274	2	
30	Lubrication kit ECO W	1042362	1	(POS.31-37 included)
31	Spring 6058	1024113	1	
32	Piston sealing KPOR130 12x7,1x2,2	1024112	2	(O-ring included with seal ring)
33	Grease piston	1024111	1	
34	O-ring 3,69x1,78	1024115	1	
35	Nut grease piston	1047688	1	Wrap with thread sealing tape
36	O-ring 9,25x1,78	712429	1	Located inside POS.35
37	O-ring 14x2	7000767	1	
38	Hose kit - lubricant ECO W	7000514	1	(POS.39-41 included)
39	Straight Push-in M8x1	790185	2	
40	Hose 2m - lubricant ECO	790176	2	
41	Pipe stub straight Push-in	790175	2	
42	Sealing washer 3/8"	710703	2	
43	Adapter 136-06-06 3/8"	710106	2	
44	Adapter 489-06-06 45°	710164	2	Loctite 2400
52	Screw MC6S 12x25	610473	3	Loctite 2700
61	Cover ECO45 W magnet	1047812	1	Part of make up

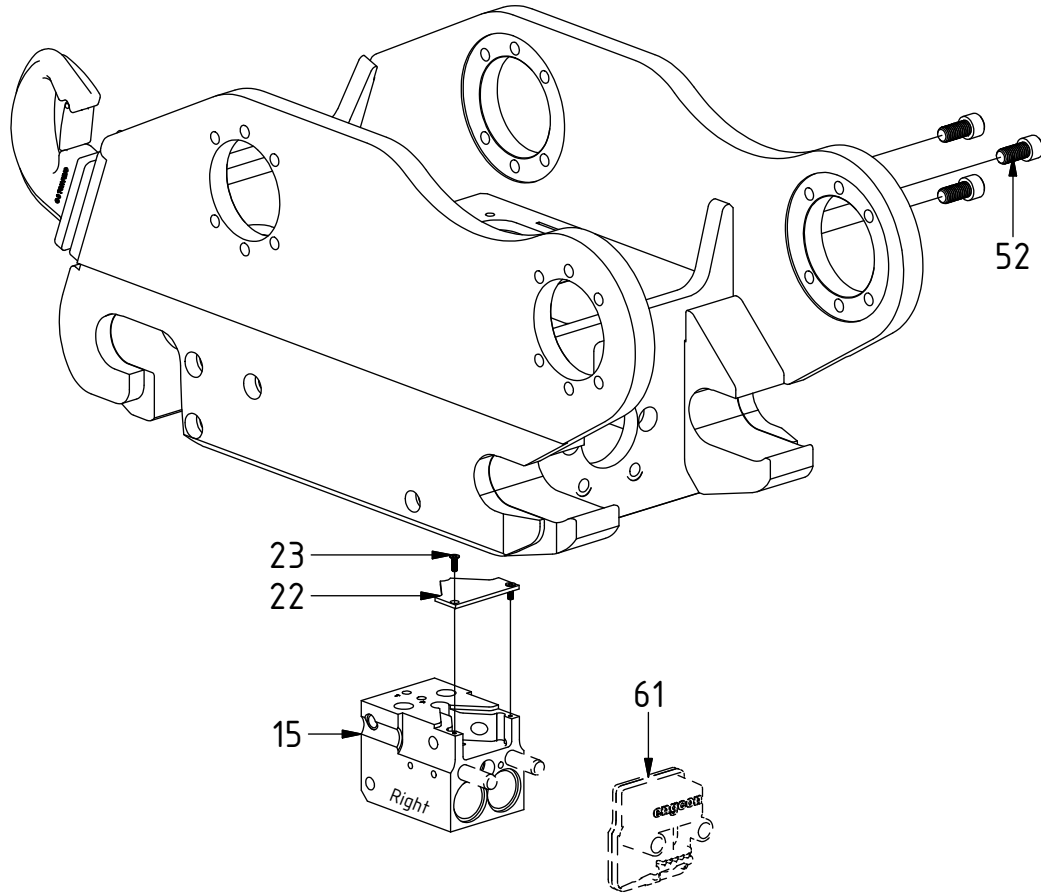
POS in order of assembly



# Quick hitch - QS45/QS50

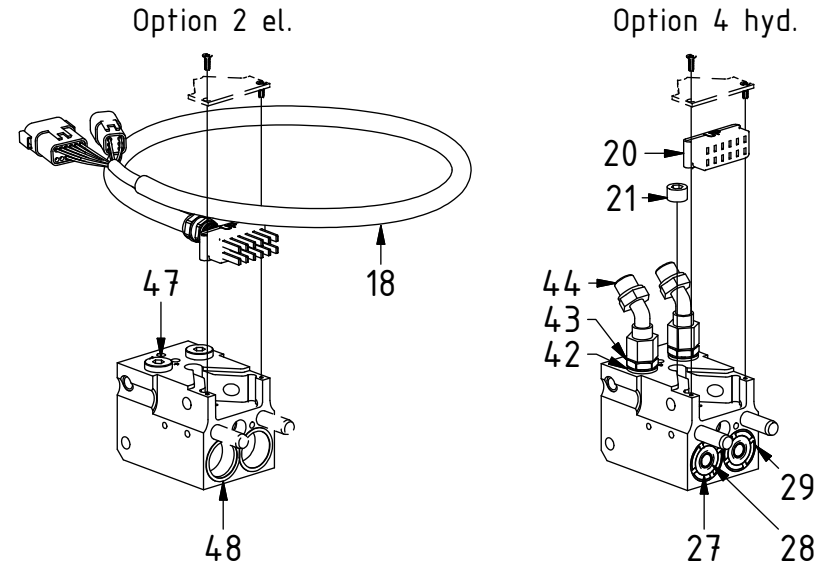
## EC-Oil QS45

Right block: DC2/MACS Option 2Bl.



POS	DESCRIPTION	PART	QTY	COMMENTS
15	Block ECO45/50 W-Quick hitch	1042479	1	(POS.17 included)
17	Dowel pin CPK ø12x55 m6	650220	2	
18	Power Plug ECO45/50 W DTM	1042244	1	
20	Power plug W Male housing	1041814	1	
21	Pipe plug DIN 906 M16x1,5	711529	1	
22	Coverplate block ECO45 W	1041098	1	
23	Screw MKFT 4x12	6000121	2	
27	Coupling ECO45/50 W 3/8" female	1025586	2	Torque: 60Nm. (POS.28 included)
28	O-ring 12,42x1,78 PU - ECO45 3/8"	712417	2	Separate seal kit: 7000045
29	Dirt protection block ECO 3/8"	1028274	2	
42	Sealing washer 3/8"	710703	2	
43	Adapter 136-06-06 3/8"	710106	2	
44	Adapter 489-06-06 45°	710164	2	Loctite 2400
47	Plug 3/8"	711504	2	
48	Protection plug ECO 45/50 hyd.	7000153	2	
52	Screw MC6S 12x25	610473	3	Loctite 2700
61	Cover ECO45 W magnet	1047812	1	Part of make up

POS in order of assembly

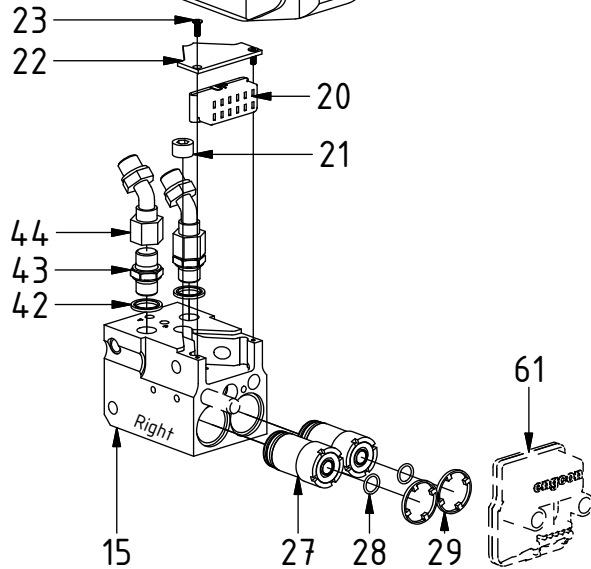
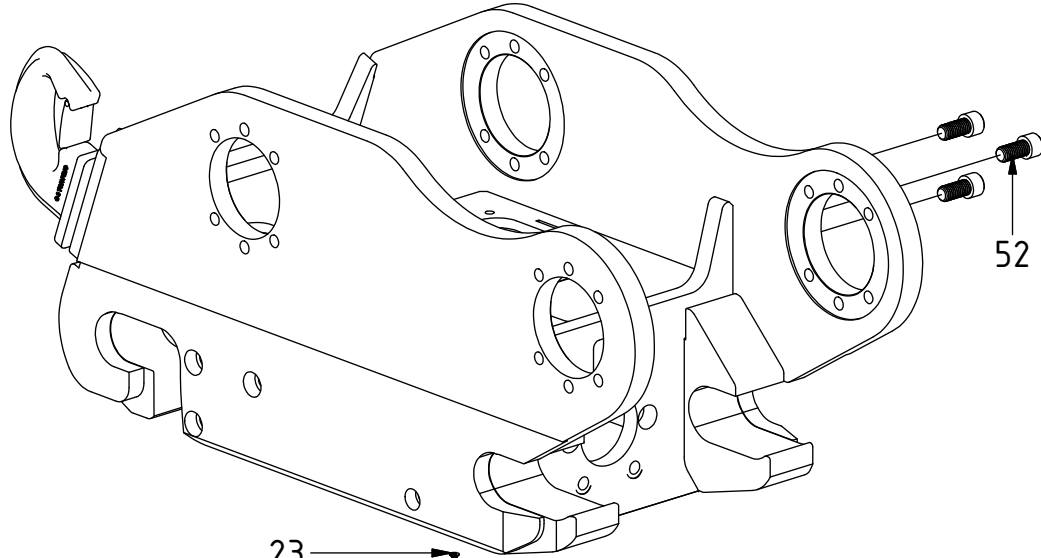


# Quick hitch - QS45/QS50

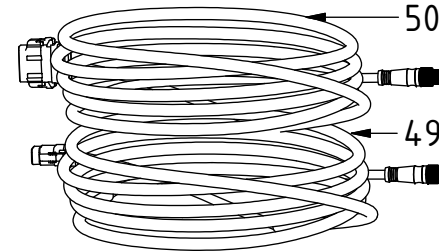
EC-Oil QS45  
Right block: ss9

POS	DESCRIPTION	PART	QTY	COMMENTS
15	Block ECO45/50 W-Quick hitch	1042479	1	(POS.17 included)
17	Dowel pin CPK ø12x55 m6	650220	2	
18	Power Plug ECO45/50 W DTM	1042244	1	
20	Power plug W Male housing	1041814	1	
21	Pipe plug DIN 906 M16x1,5	711529	1	
22	Coverplate block ECO45 W	1041098	1	
23	Screw MKFT 4x12	6000121	2	
27	Coupling ECO45/50 W 3/8" female	1025586	2	Torque: 60Nm. (POS.28 included)
28	O-ring 12,42x1,78 PU - ECO45 3/8"	712417	2	Separate seal kit: 7000045
29	Dirt protection block ECO 3/8"	1028274	2	
42	Sealing washer 3/8"	710703	2	
43	Adapter 136-06-06 3/8"	710106	2	
44	Adapter 489-06-06 45°	710164	2	Loctite 2400
49	Cable ePS ECO W ss9,ss10(SVAB)	1042246	1	Attach to POS.18 6P (QS50: POS.19)
50	Cable ECO W Tiltanglesensor ss9-2	1047113	1	Attach to POS.18 12P
52	Screw MC6S 12x25	610473	3	Loctite 2700
61	Cover ECO45 W magnet	1047812	1	Part of make up

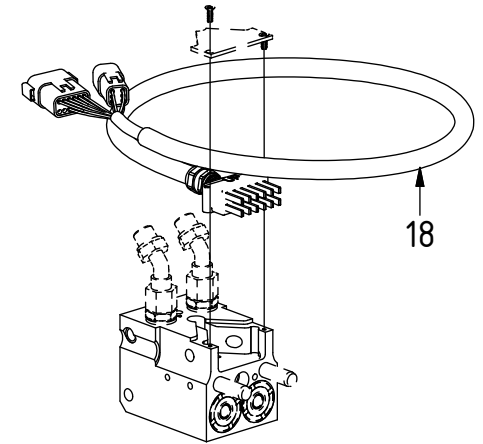
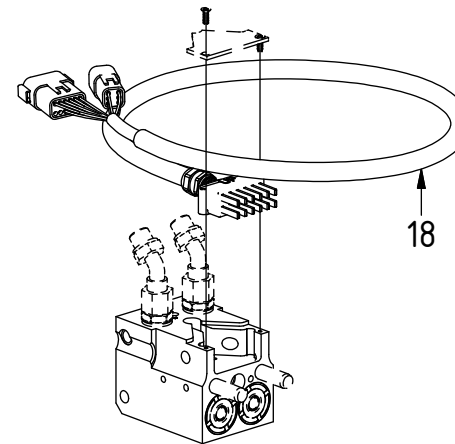
POS in order of assembly



Option 2 el. ePS:



Option 2 el.

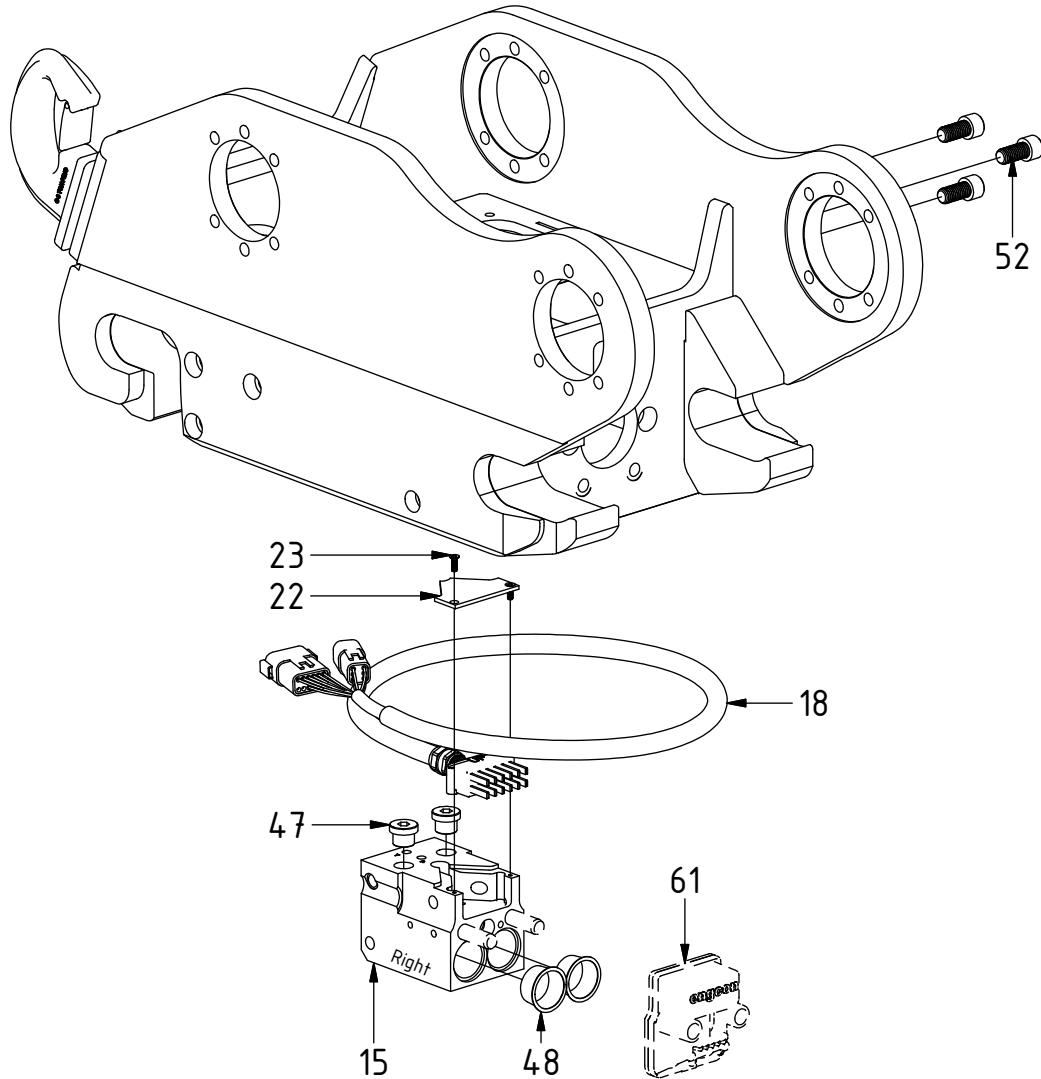


# Quick hitch - QS45/QS50

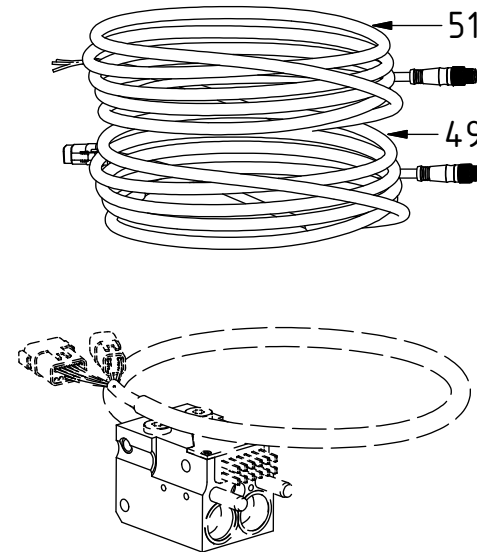
EC-Oil QS45  
Right block: ss10 (SVAB)

POS	DESCRIPTION	PART	QTY	COMMENTS
15	Block ECO45/50 W-Quick hitch	1042479	1	(POS.17 included)
17	Dowel pin CPK ø12x55 m6	650220	2	
18	Power Plug ECO45/50 W DTM	1042244	1	
22	Coverplate block ECO45 W	1041098	1	
23	Screw MKFT 4x12	6000121	2	
27	Coupling ECO45/50 W 3/8" female	1025586	2	Torque: 60Nm. (POS.28 included)
28	O-ring 12,42x1,78 PU - ECO45 3/8"	712417	2	Separate seal kit: 7000045
29	Dirt protection block ECO 3/8"	1028274	2	
42	Sealing washer 3/8"	710703	2	
43	Adapter 136-06-06 3/8"	710106	2	
44	Adapter 489-06-06 45°	710164	2	Loctite 2400
47	Plug 3/8"	711504	2	
48	Protection plug ECO 45/50 hyd.	7000153	2	
49	Cable ePS ECO W ss9,ss10(SVAB)	1042246	1	Attach to POS.18 6P (QS50: POS.19)
51	Cable ECO W Tiltanglesensor SVAB	1047111	1	L.BI: WH>11. R.BI: BR>1, BL>2, GR>11
52	Screw MC6S 12x25	610473	3	Loctite 2700
61	Cover ECO45 W magnet	1047812	1	Part of make up

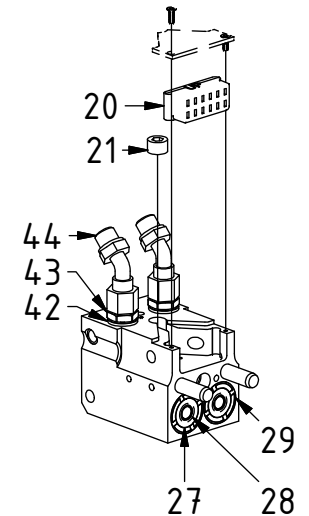
POS in order of assembly



Option ePS:



Option 4 hyd.

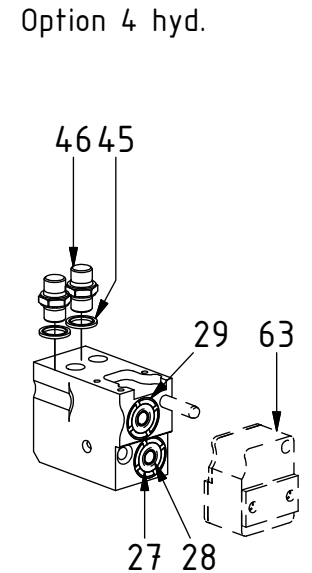
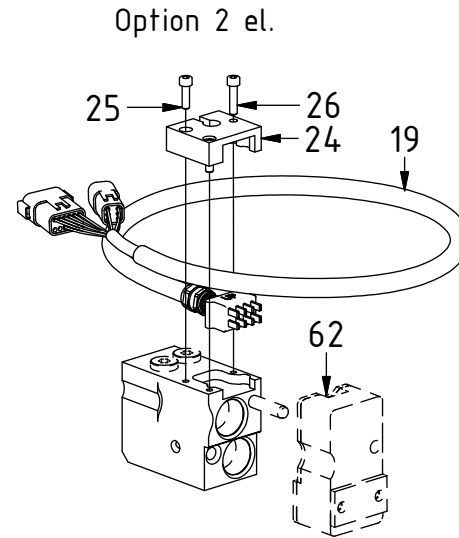
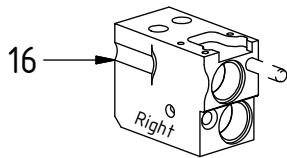
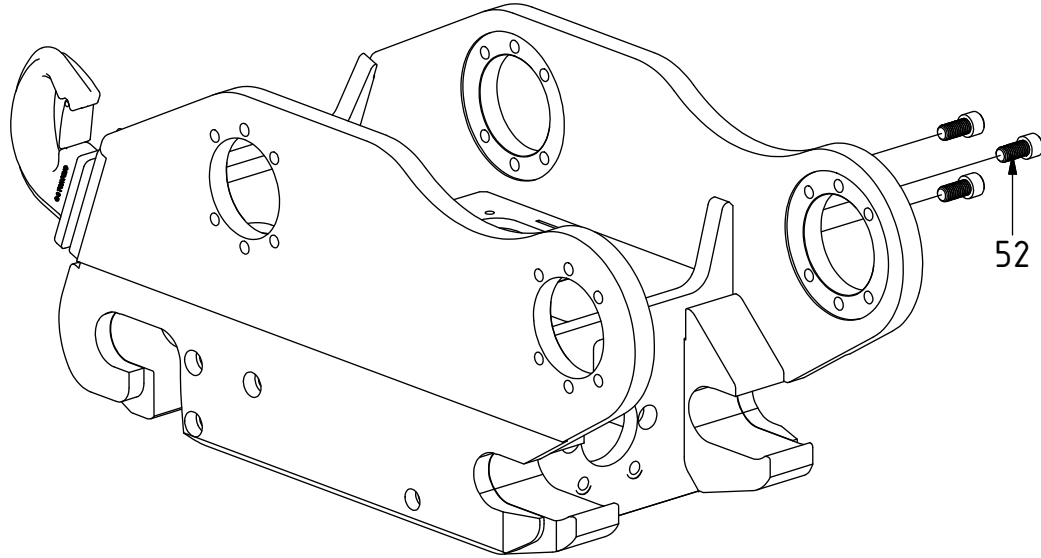


# Quick hitch - QS45/QS50

**EC-Oil QS50**  
Right block: DC2/MACS Option 2Bl.

POS	DESCRIPTION	PART	QTY	COMMENTS
16	Block ECO50 W-Quick hitch-Right	1046073	1	(POS.17 included)
17	Dowel pin CPK $\varnothing$ 12x55 m6	650220	2	
19	Power Plug ECO50 W DTM Right Bl.	1045167	1	
24	Coverplate block ECO50 W Right Bl.	1041647	1	
25	Screw MC6S M6x20	610414	2	
26	Screw MC6S M6x25	6000083	1	
27	Coupling ECO45/50 W 3/8" female	1025586	2	Torque: 60Nm. (POS.28 included)
28	O-ring 12,42x1,78 PU - ECO45 3/8"	712417	2	Separate seal kit: 7000045
29	Dirt protection block ECO 3/8"	1028274	2	
45	washer			
46	adapter			
52	Screw MC6S 12x25	610473	3	Loctite 2700
62	Cover ECO50 W magnet (with el.)	1049164	1	Part of make up
63	Cover ECO50 W magnet (w/o el.)	1049168	1	Part of make up

POS in order of assembly



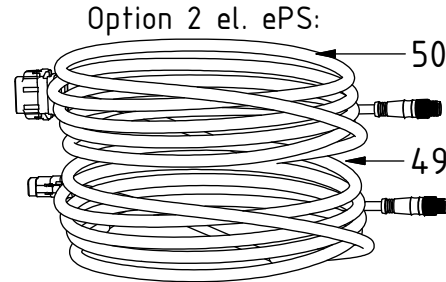
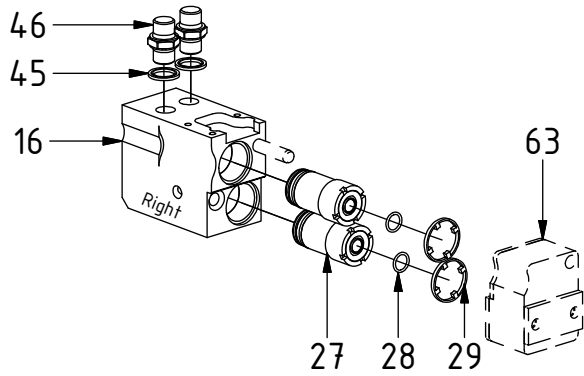
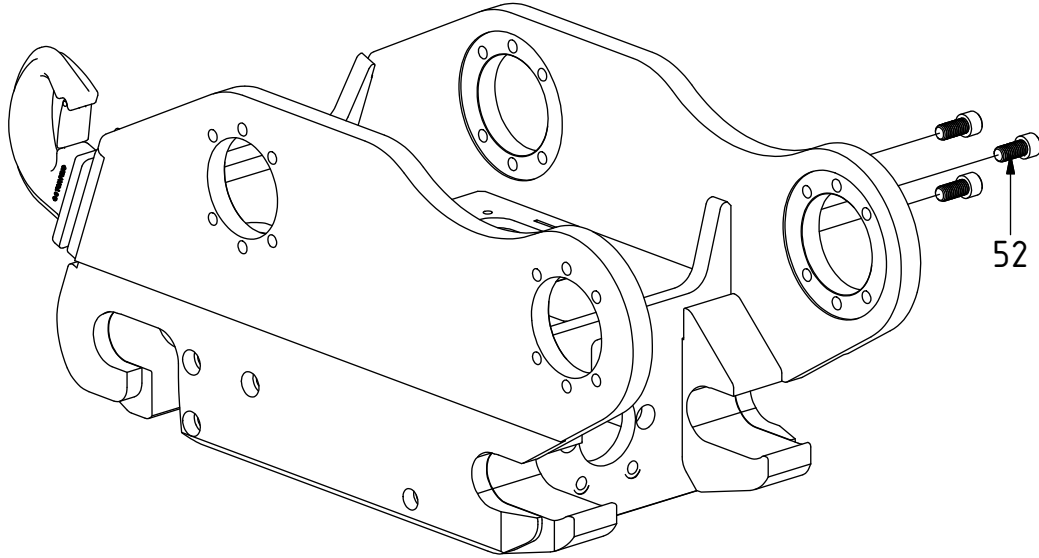


# Quick hitch - QS45/QS50

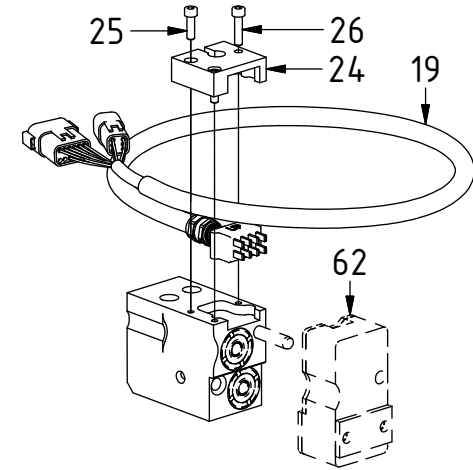
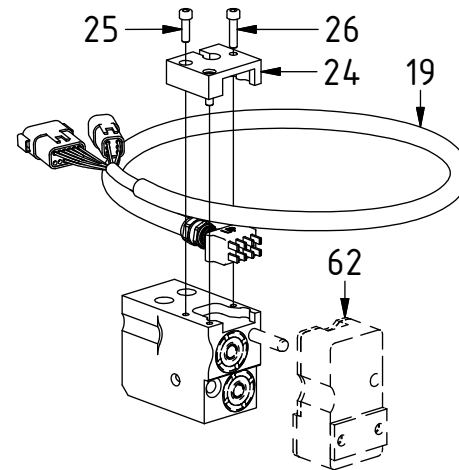
EC-Oil QS50  
Right block: ss9

POS	DESCRIPTION	PART	QTY	COMMENTS
16	Block ECO50 W-Quick hitch-Right	1046073	1	(POS.17 included)
17	Dowel pin CPK ø12x55 m6	650220	2	
19	Power Plug ECO50 W DTM Right Bl.	1045167	1	
24	Coverplate block ECO50 W Right Bl.	1041647	1	
25	Screw MC6S M6x20	610414	2	
26	Screw MC6S M6x25	6000083	1	
27	Coupling ECO45/50 W 3/8" female	1025586	2	Torque: 60Nm. (POS.28 included)
28	O-ring 12,42x1,78 PU - ECO45 3/8"	712417	2	Separate seal kit: 7000045
29	Dirt protection block ECO 3/8"	1028274	2	
45	washer			
46	adapter			
49	Cable ePS ECO W ss9,ss10(SVAB)	1042246	1	Attach to POS.18 6P (QS50: POS.19)
50	Cable ECO W Tiltanglesensor ss9-2	1047113	1	Attach to POS.18 12P
52	Screw MC6S 12x25	610473	3	Loctite 2700
62	Cover ECO50 W magnet (with el.)	1049164	1	Part of make up
63	Cover ECO50 W magnet (w/o el.)	1049168	1	Part of make up

POS in order of assembly



Option 2 el.

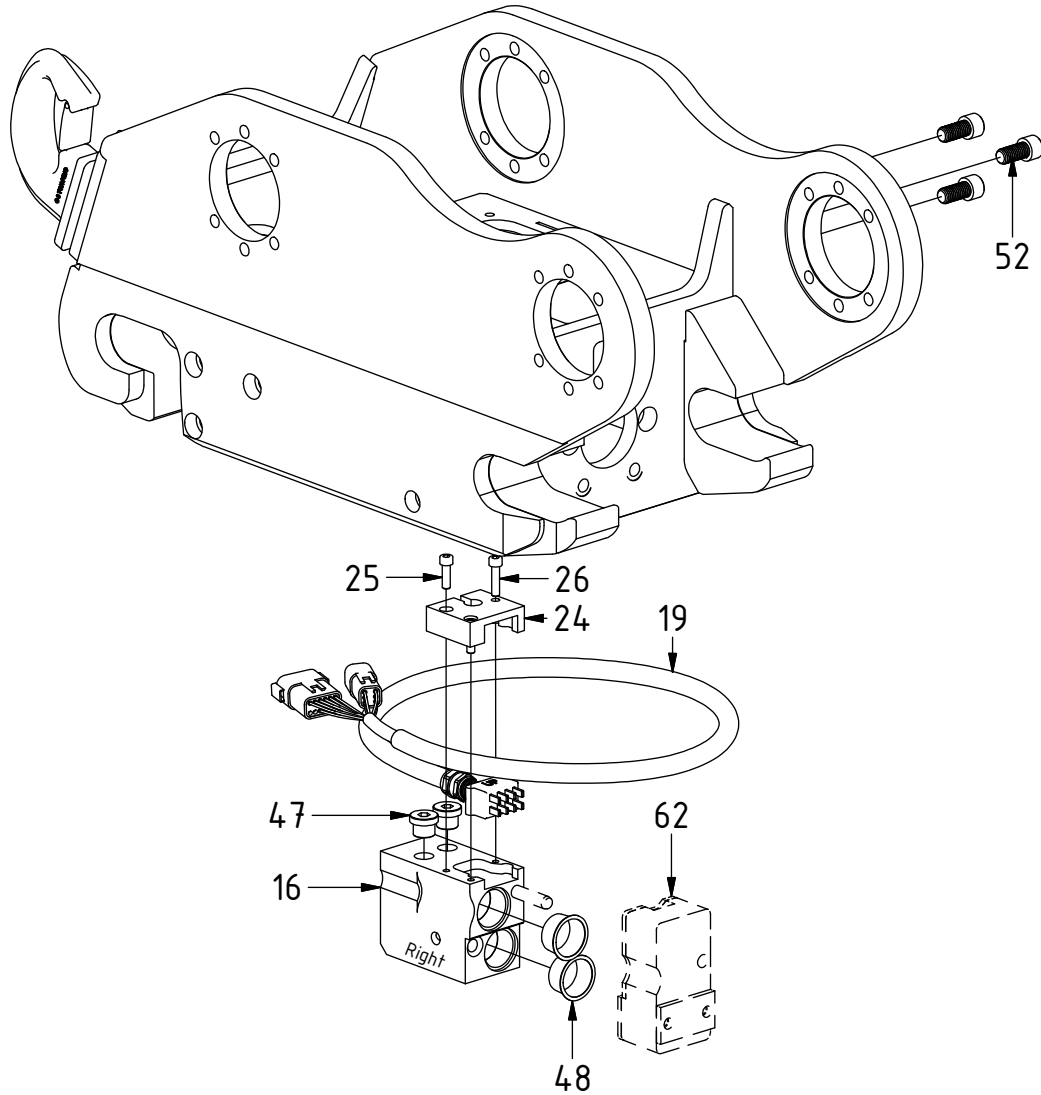


# Quick hitch - QS45/QS50

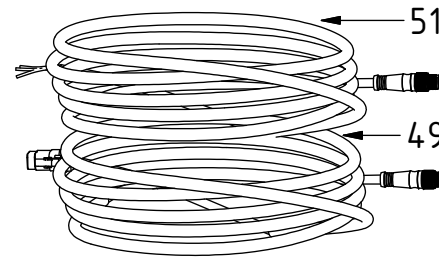
EC-Oil QS50  
Right block: ss10 (SVAB)

POS	DESCRIPTION	PART	QTY	COMMENTS
16	Block ECO50 W-Quick hitch-Right	1046073	1	(POS.17 included)
17	Dowel pin CPK ø12x55 m6	650220	2	
19	Power Plug ECO50 W DTM Right Bl.	1045167	1	
24	Coverplate block ECO50 W Right Bl.	1041647	1	
25	Screw MC6S M6x20	610414	2	
26	Screw MC6S M6x25	6000083	1	
27	Coupling ECO45/50 W 3/8" female	1025586	2	Torque: 60Nm. (POS.28 included)
28	O-ring 12,42x1,78 PU - ECO45 3/8"	712417	2	Separate seal kit: 7000045
29	Dirt protection block ECO 3/8"	1028274	2	
45	washer			
46	adapter			
47	Plug 3/8"	711504	2	
48	Protection plug ECO 45/50 hyd.	7000153	2	
49	Cable ePS ECO W ss9,ss10(SVAB)	1042246	1	Attach to POS.18 6P (QS50: POS.19)
51	Cable ECO W Tiltanglesensor SVAB	1047111	1	L.Bl: WH>11. R.Bl: BR>1, BL>2, GR>11
52	Screw MC6S 12x25	610473	3	Loctite 2700
62	Cover ECO50 W magnet (with el.)	1049164	1	Part of make up

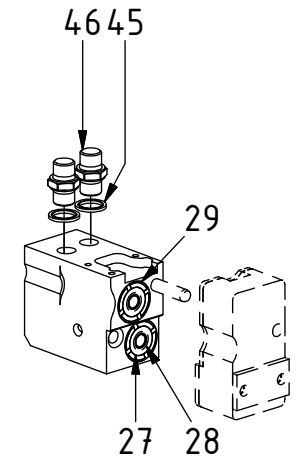
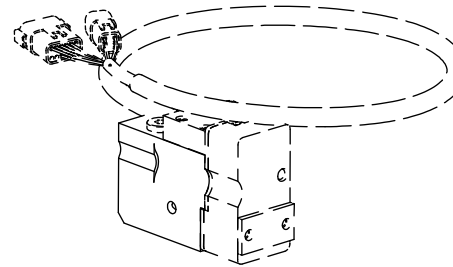
POS in order of assembly



Option ePS:



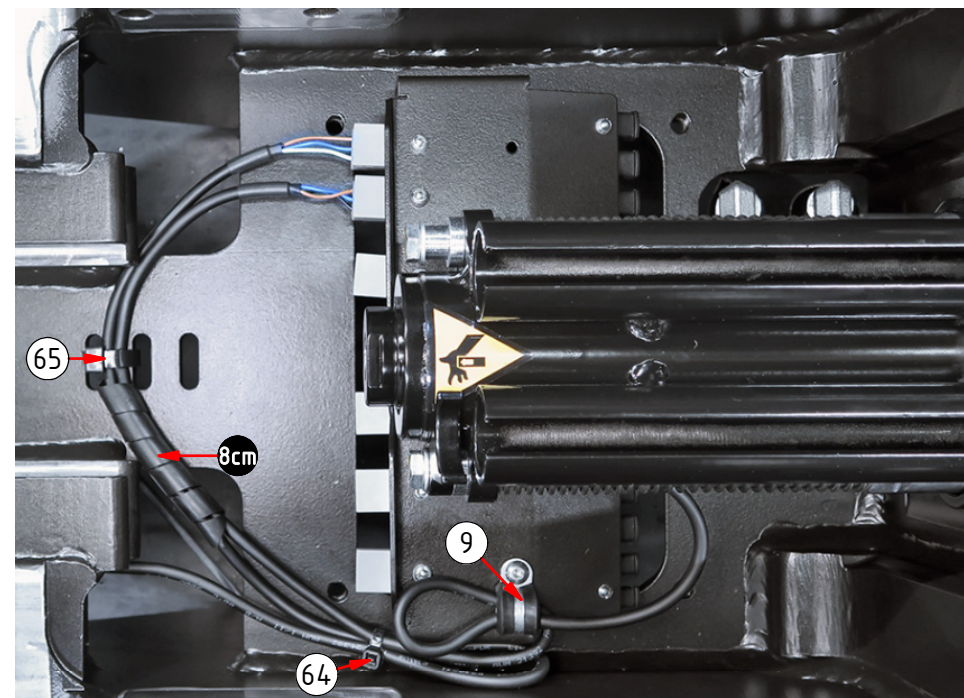
Option 4 hyd.



# Quick hitch - QS45/QS50

Without EC-Oil

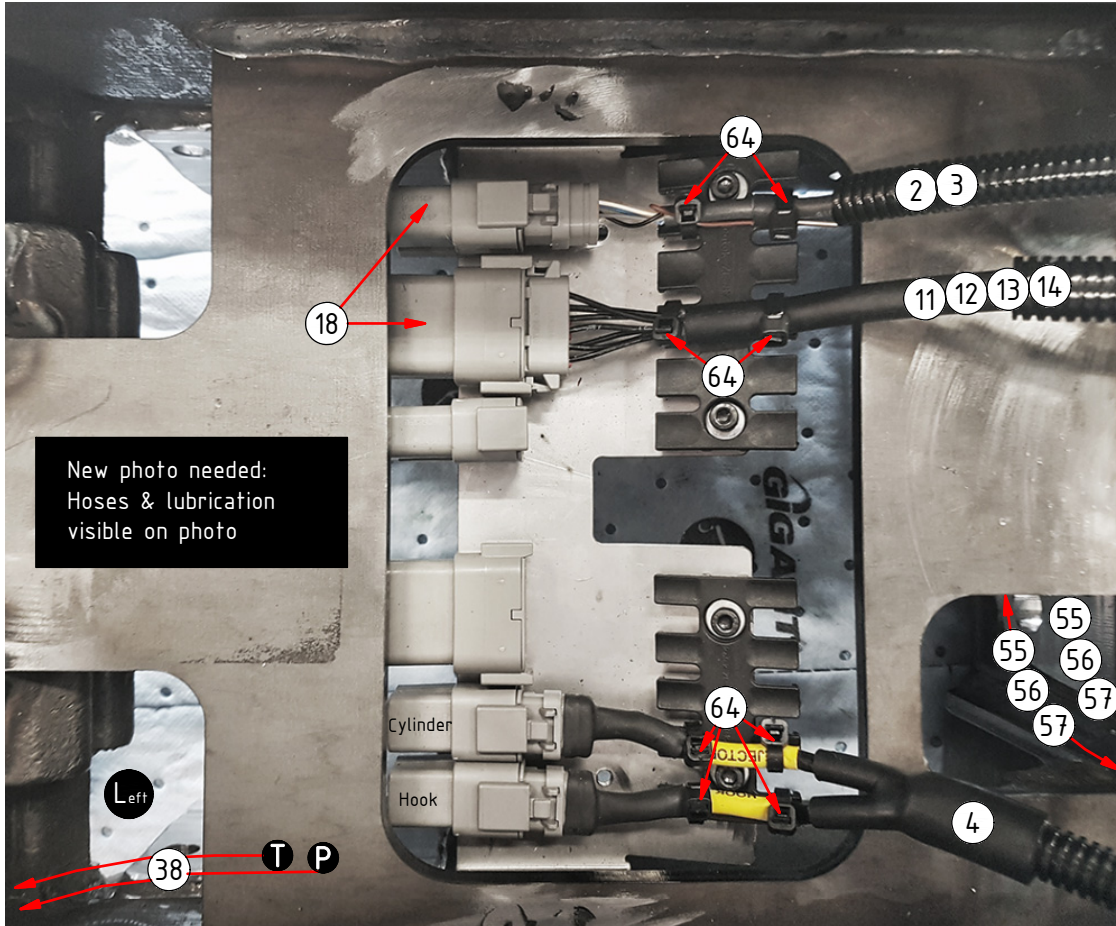
POS	DESCRIPTION	PART	QTY	COMMENTS
4	Cable QS-QLM-Quick hitch	842149	1	Attach to QS sensors
9	Rubber steel clamp $\varnothing 6$	6000027	1	
55	Hose Lock	741505	2	
56	Hose Lock Liebherr	7000560	2	
57	Hose Lock Lännen	7000561	2	
64	Cable tie 4,8x360	1021586	1	
65	Cable tie 7,8x360	1021587	1	





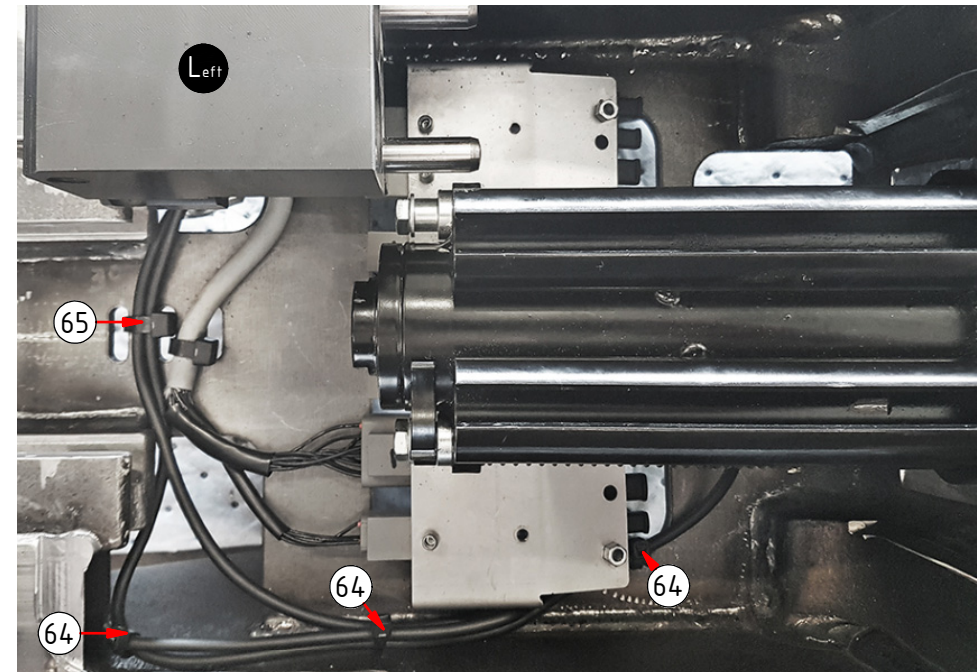
# Quick hitch - QS45/QS50

## EC-oil QS45/QS50 Left block (Std)



POS	DESCRIPTION	PART	QTY	COMMENTS
2	Cable ECO W Tilt angle sensor DC2	1049315	1	Attach to POS.18 6P (Only DC2)
3	Cable QS-QLM-Tiltrotator-ss9,svab	842148	1	Attach to POS.18 6P (Not on DC2)
4	Cable QS-QLM-Quick hitch	842149	1	Attach to QS sensors
11	Cable ECO60 W Machine DC2	1048527	1	Attach to POS.18 12P
12	Cable ECO60 Machine ss9-2	1036846	1	Attach to POS.18 12P
13	Cable ECO60 Machine ss10(SVAB)	1029500	1	Attach to POS.18 12P (QS50: 18&19)
14	Cable ECO60 W Machine MACS	1043276	1	Attach to POS.18 12P
18	Power Plug ECO45/50 W DTM	1042244	1	
38	Hose kit - lubricant ECO W	7000514	1	(POS.39-41 included)
55	Hose Lock	741505	2	
56	Hose Lock Liebherr	7000560	2	
57	Hose Lock Lännen	7000561	2	
64	Cable tie 4,8x360	1021586	1	
65	Cable tie 7,8x360	1021587	1	

POS in order of assembly



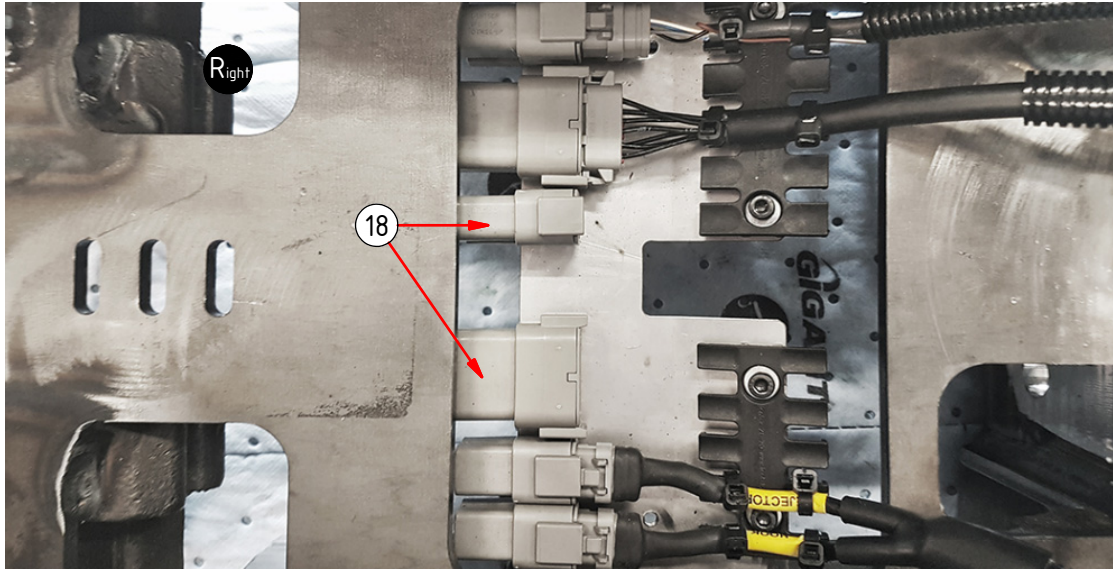
POS	DESCRIPTION	PART	QTY	COMMENTS
18	Power Plug ECO45/50 W DTM	1042244	1	

POS in order of assembly

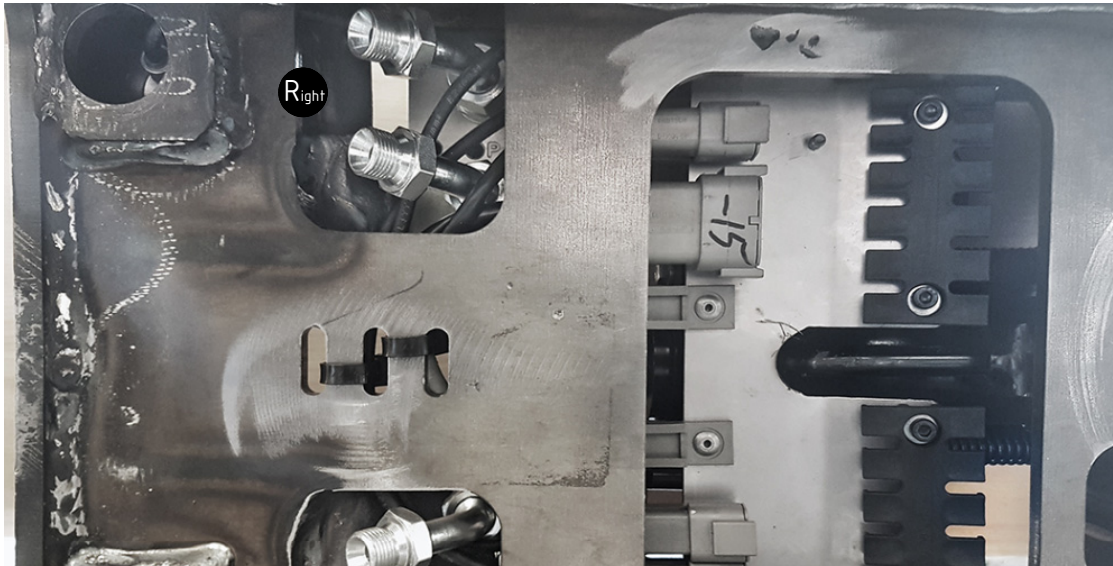
## EC-Oil QS45

Right block: DC2/MACS Option 2Bl.

Option 2 el.



Option 4 hyd.



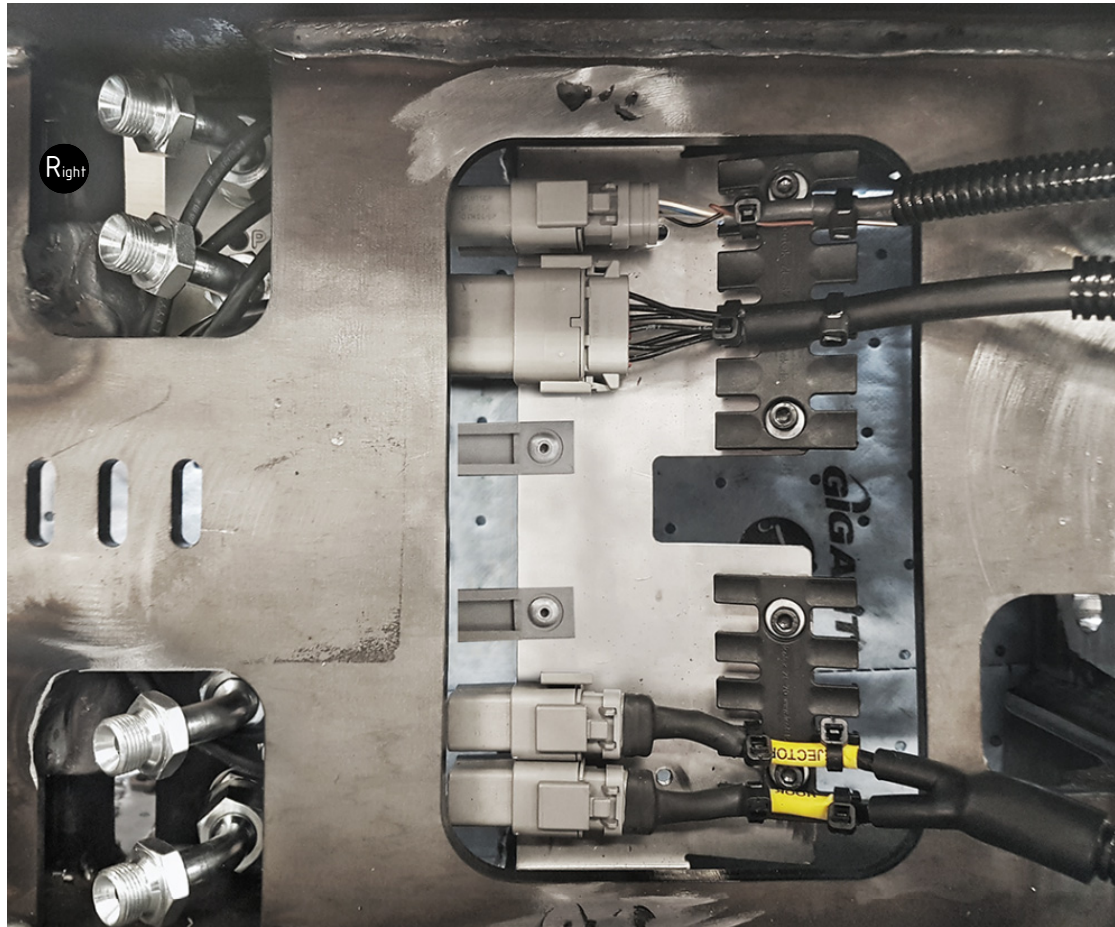


# Quick hitch - QS45/QS50

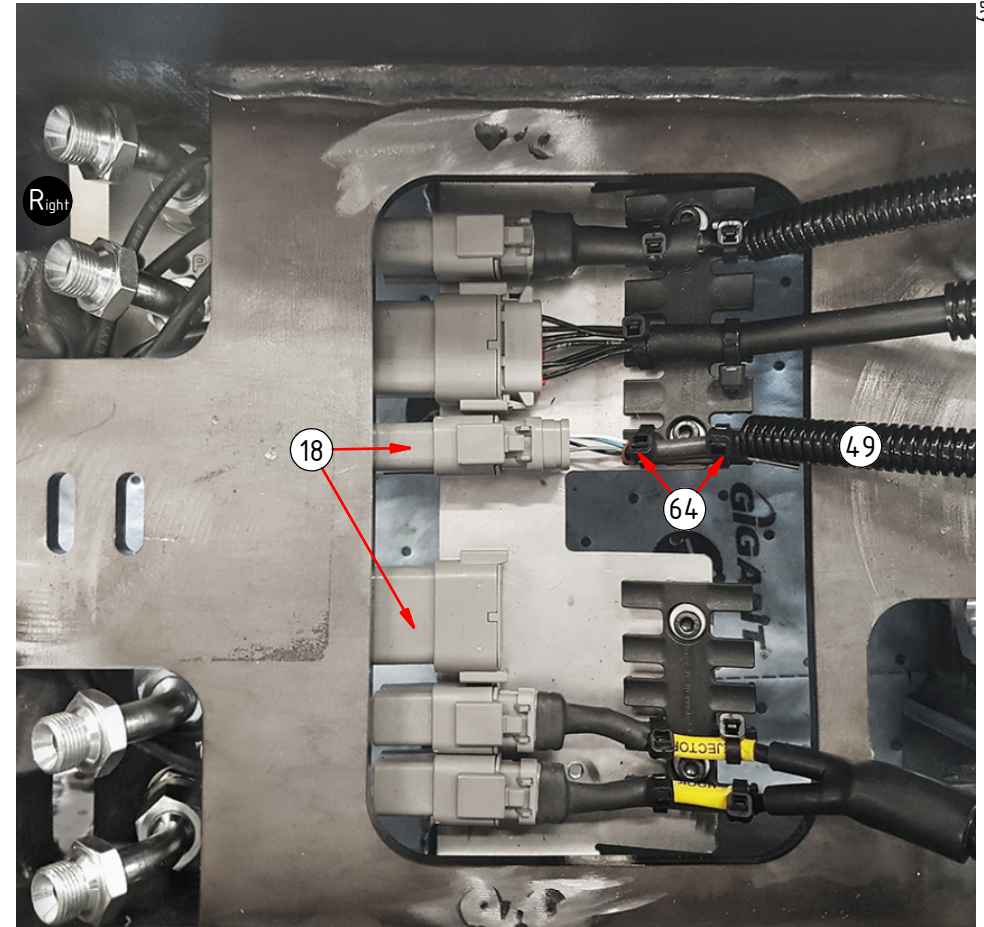
EC-Oil QS45  
Right block: ss9

POS	DESCRIPTION	PART	QTY	COMMENTS
18	Power Plug ECO45/50 W DTM	1042244	1	
49	Cable ePS ECO W ss9,ss10(SVAB)	1042246	1	Attach to POS.18 6P (QS50: POS.19)
64	Cable tie 4,8x360	1021586	1	

POS in order of assembly



Option 2 el. ePS:



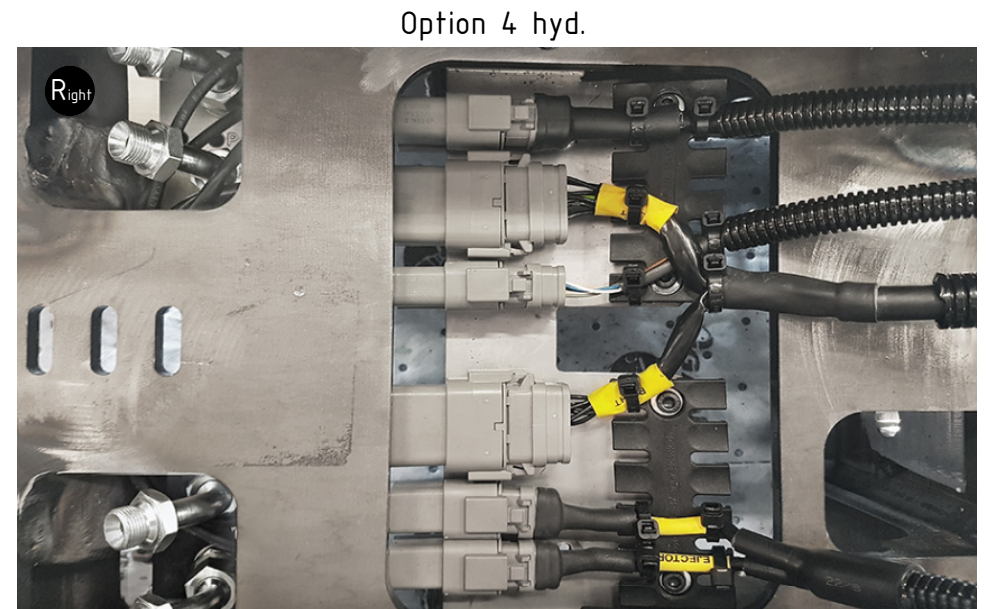
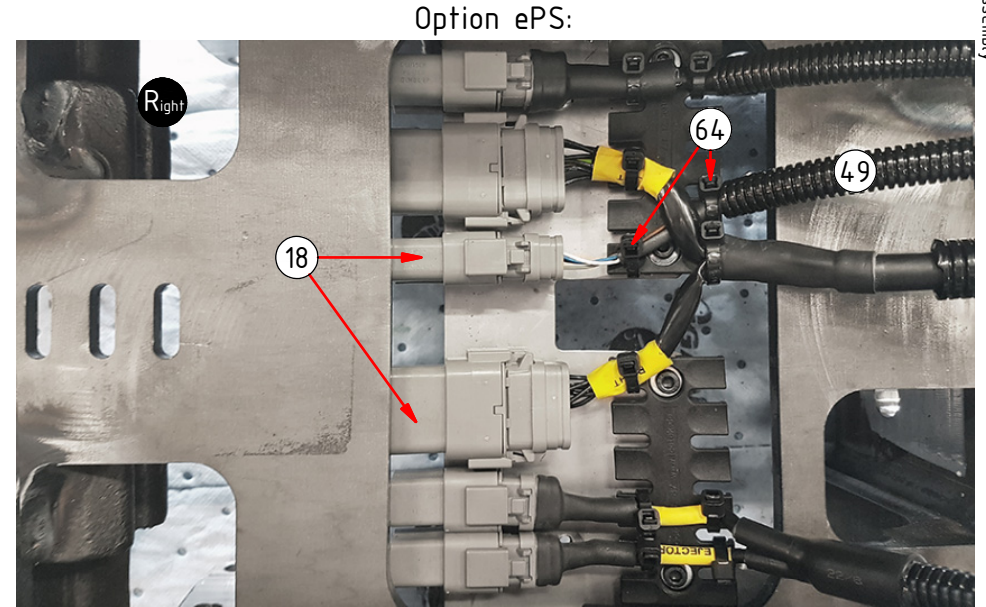
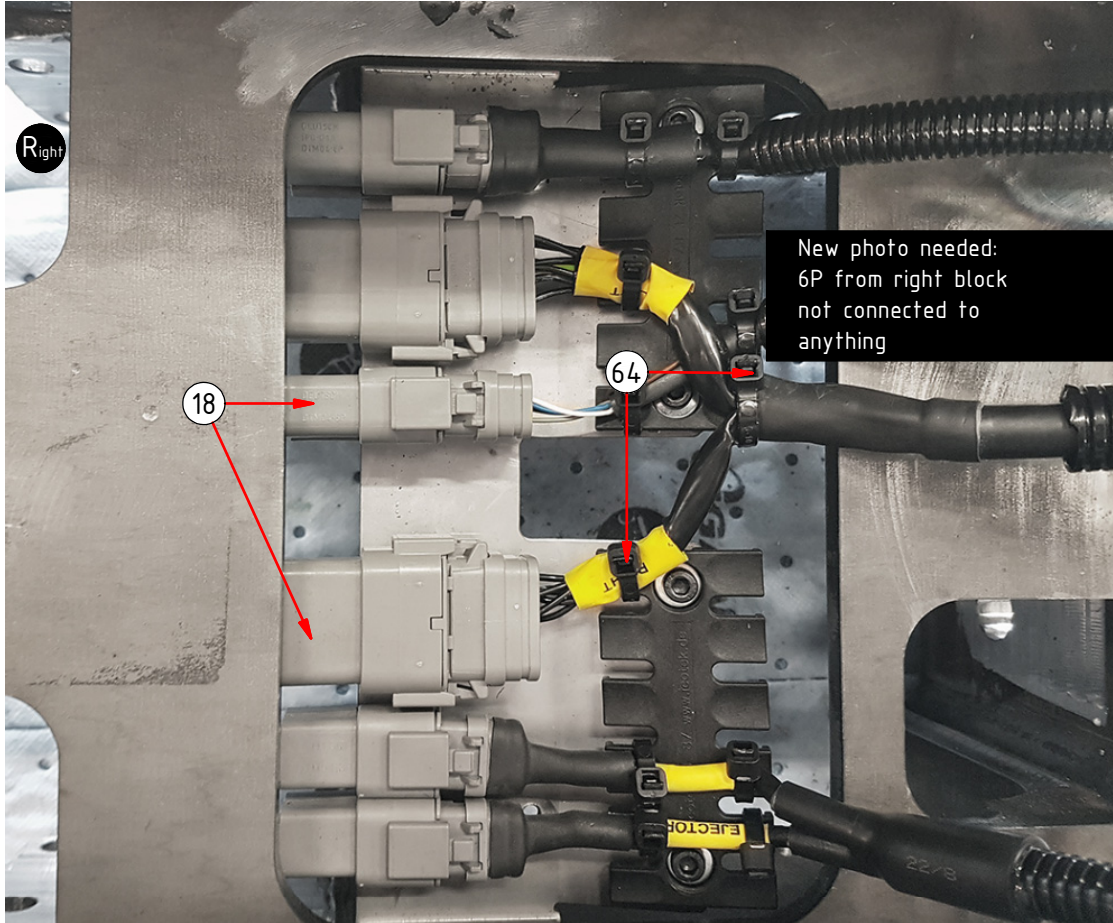


# Quick hitch - QS45/QS50

EC-Oil QS45  
Right block: ss10 (SVAB)

POS	DESCRIPTION	PART	QTY	COMMENTS
18	Power Plug ECO45/50 W DTM	1042244	1	
49	Cable ePS ECO W ss9,ss10(SVAB)	1042246	1	Attach to POS.18 6P (QS50: POS.19)
64	Cable tie 4,8x360	1021586	1	

POS in order of assembly



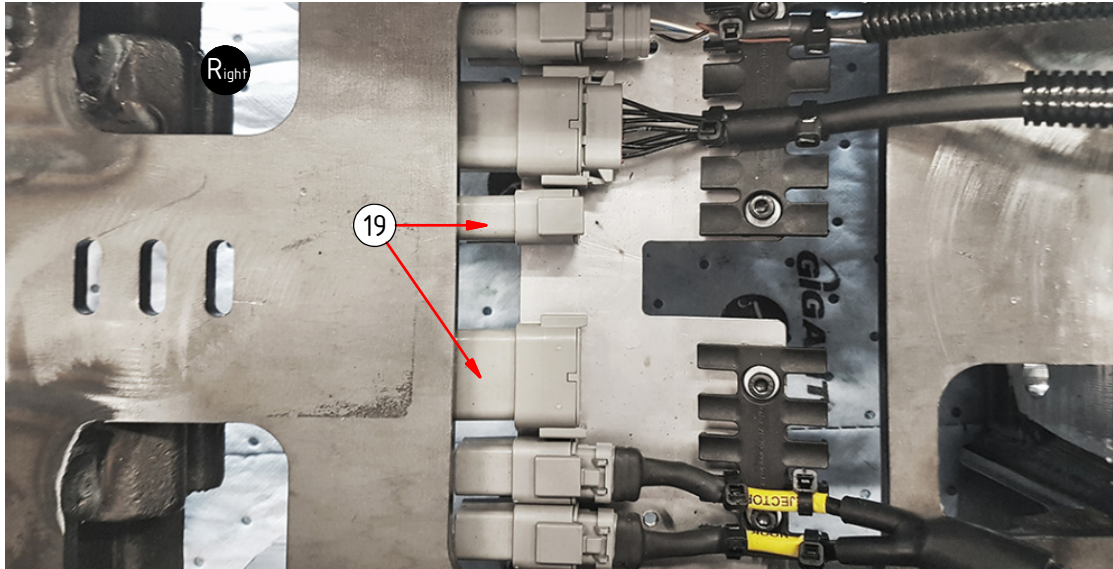
# Quick hitch - QS45/QS50

POS	DESCRIPTION	PART	QTY	COMMENTS
19	Power Plug EC050 W DTM Right Bl.	1045167	1	

## EC-Oil QS50

Right block: DC2/MACS Option 2Bl.

Option 2 el.



Option 4 hyd.

Photo needed: EC050 right block with 4 hyd.



# Quick hitch - QS45/QS50

EC-Oil QS50  
Right block: ss9

POS	DESCRIPTION	PART	QTY	COMMENTS
19	Power Plug EC050 W DTM Right Bl.	1045167	1	
49	Cable ePS ECO W ss9,ss10(SVAB)	1042246	1	Attach to POS.18 6P (QS50: POS.19)
64	Cable tie 4,8x360	1021586	1	

Option 2 el. ePS:

Photo needed: ss9  
config. 2bl 1el 4hyd.

Photo needed: ss9 config.  
2bl 2el 4hyd. with POS.49

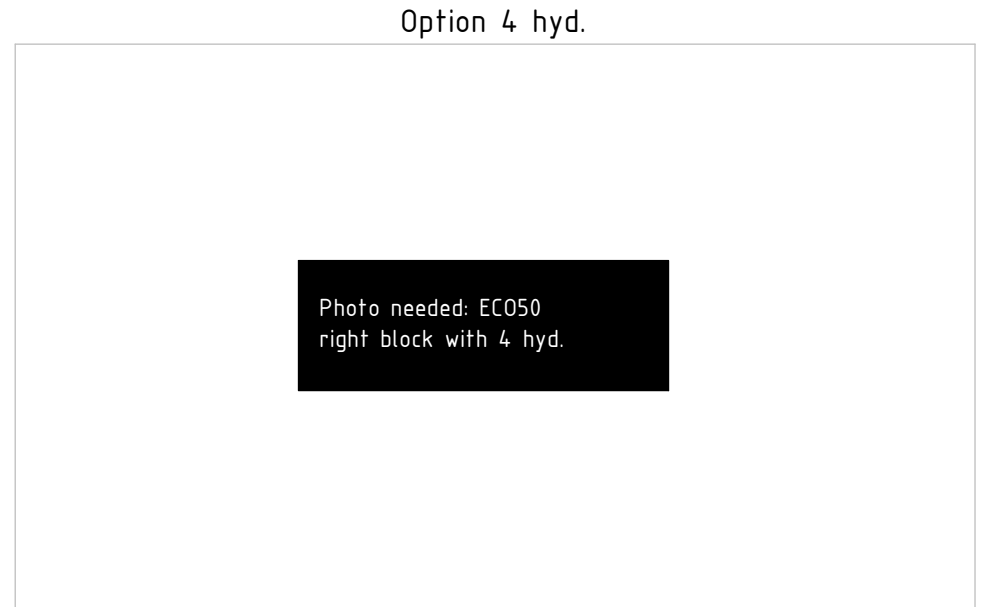
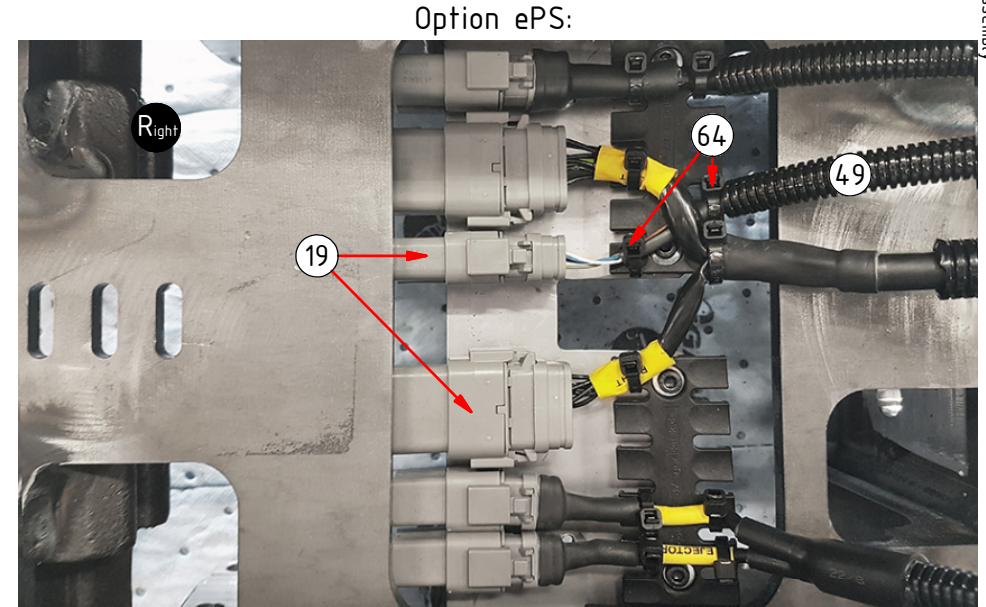
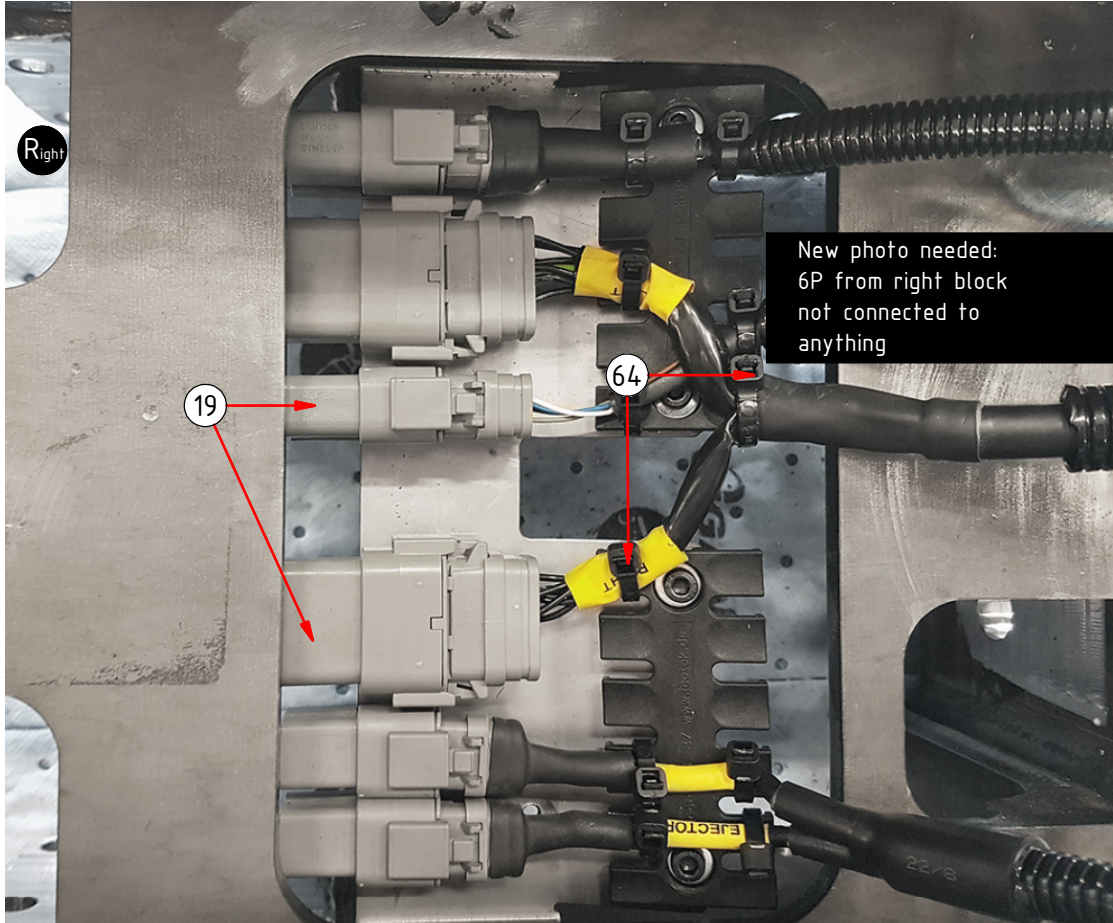
POS in order of assembly

# Quick hitch - QS45/QS50

EC-Oil QS50  
Right block: ss10 (SVAB)

POS	DESCRIPTION	PART	QTY	COMMENTS
19	Power Plug EC050 W DTM Right Bl.	1045167	1	
49	Cable ePS ECO W ss9,ss10(SVAB)	1042246	1	Attach to POS.18 6P (QS50: POS.19)
64	Cable tie 4,8x360	1021586	1	

POS in order of assembly



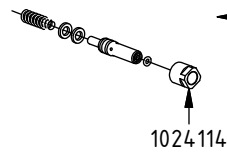
# Quick hitch - QS45/QS50

## Related spare parts

POS	DESCRIPTION	PART	QTY	COMMENTS
11	Cable ECO60 W Machine DC2	1048527	1	Attach to POS.18 12P
30	Lubrication kit ECO W	1042362	1	(POS.31-37 included)
58	Cover QS45 V3	1053624	1	
59	Screw M6SF 8x12H Riffled	6000120	4	
66	Cover QS45/QS50	1025581	1	Only for QS50 from 2019-10
67	Cable ECO60 W Machine DC2 Two connectors	1042247	1	Replaced by POS.11 from 2018-08 Attach to POS.18 6P & 12P

POS in order of assembly

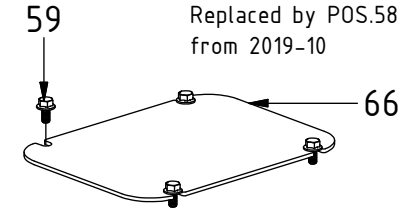
EC-Oil:



1042362

Replaced by POS.30  
from 2019-01. On ECO  
blocks previous rev E:  
remove o-ring on nut

QS45:



DC2:

