

## COVERSHEET

Planned document changes:

**Briefly:**

No planned changes.

Document changes:

**Date:**

**Change:**

**Rev.**

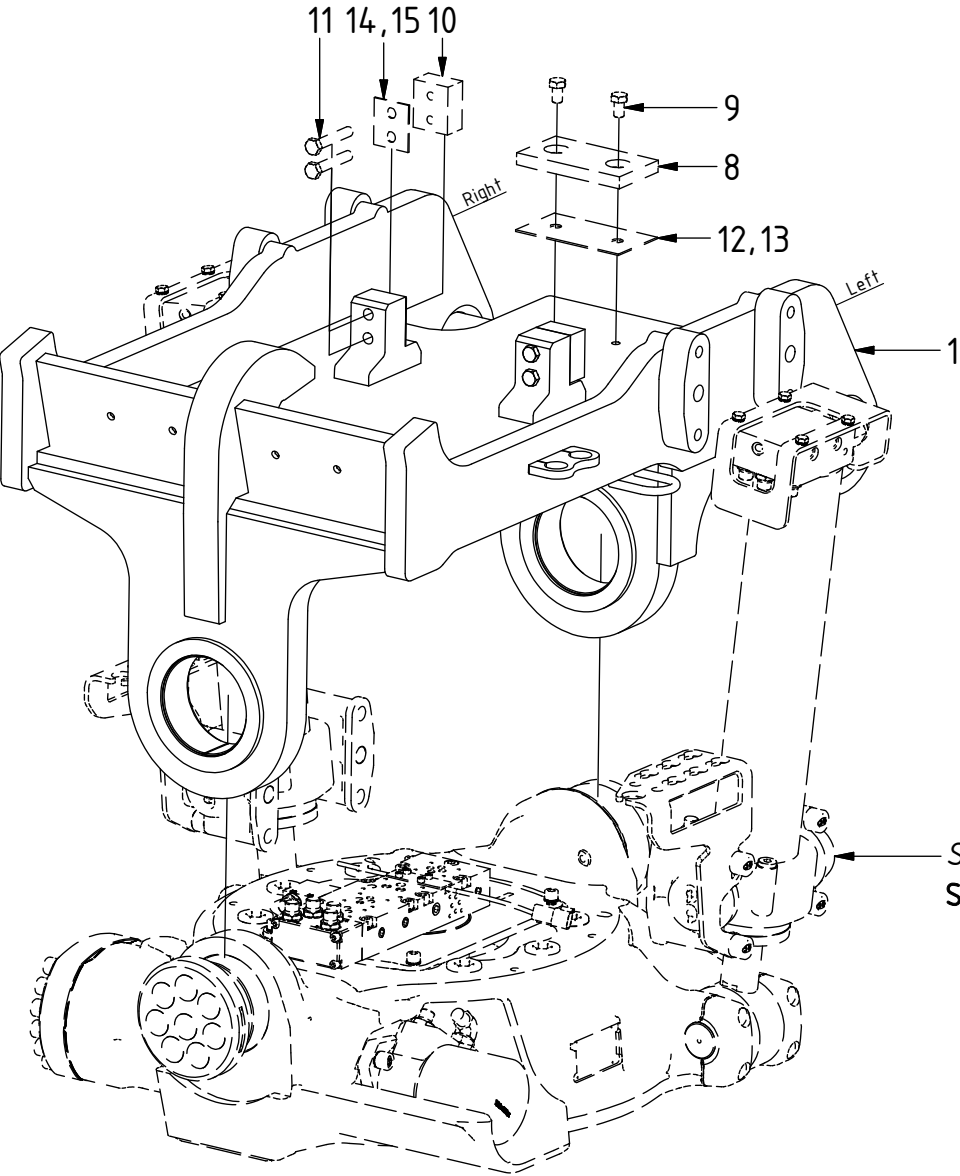
**after change:**

2018-06-25

New instruction.

-

# EC233 - B27 Top part



POS	DESCRIPTION	PART	QTY	COMMENTS
1	Top part B27 EC233	1040631	1	
8	Shims S1 & S2	400069	5	(Included in Top part)
9	Screw M6S 12x20	610163	10	(Included in Top part)
10	Shims Stopper	401138	2	(Included in Top part)
11	Screw M6S 12x70	610172	4	(Included in Top part)
12	Shims 20 1mm	404512		Use if required (Spare part only)
13	Shims 20 2mm	404513		Use if required (Spare part only)
14	Shims 1mm	405153		Use if required (Spare part only)
15	Shims 2mm	405549		Use if required (Spare part only)

POS in order of assembly

# EC233 - B27 Top part

**P** = 2  
**T** = 2

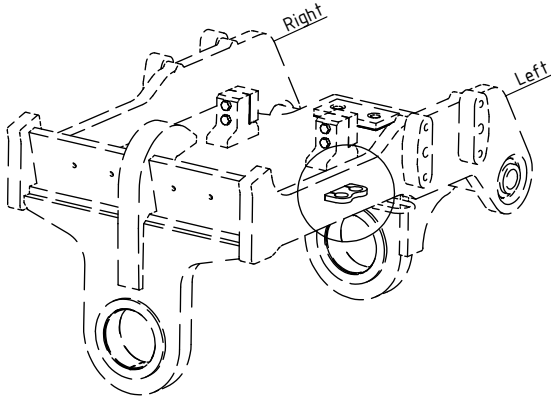
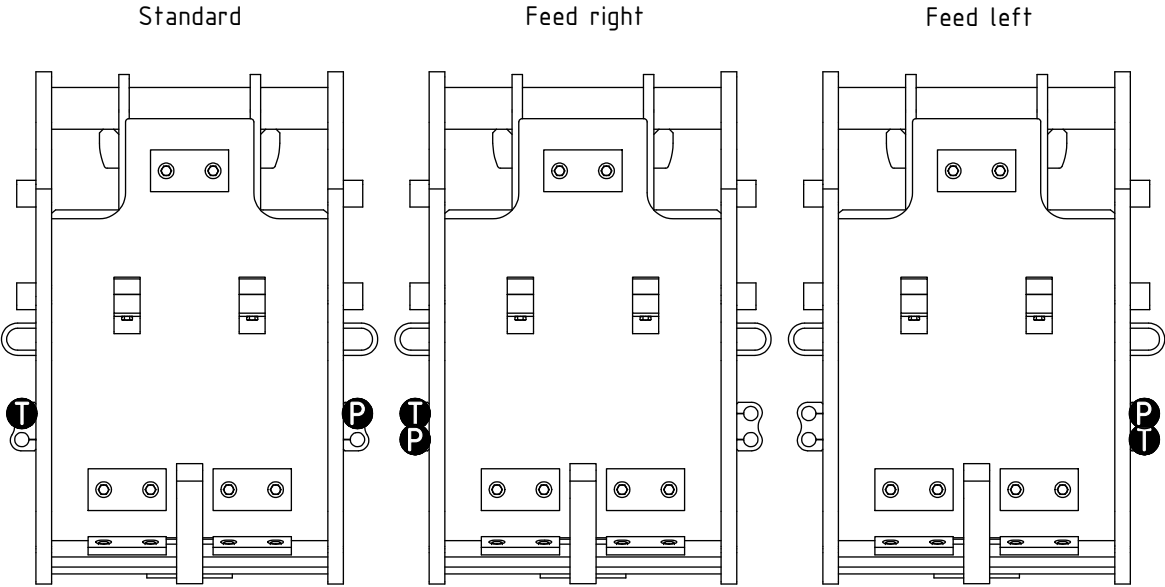
FEED:

3/4" (Std)

Main feed

POS	DESCRIPTION	PART	QTY	COMMENTS
2	Use washer, adapter, nut according to POS.3, 4, 5			
3	Washer NL 1"	611095	2	
4	Adapter 2011-12 (3/4")	712227	2	
5	Bulkhead adapter nut	712211	2	
6	Attach feed hoses from control system			

POS in order of assembly

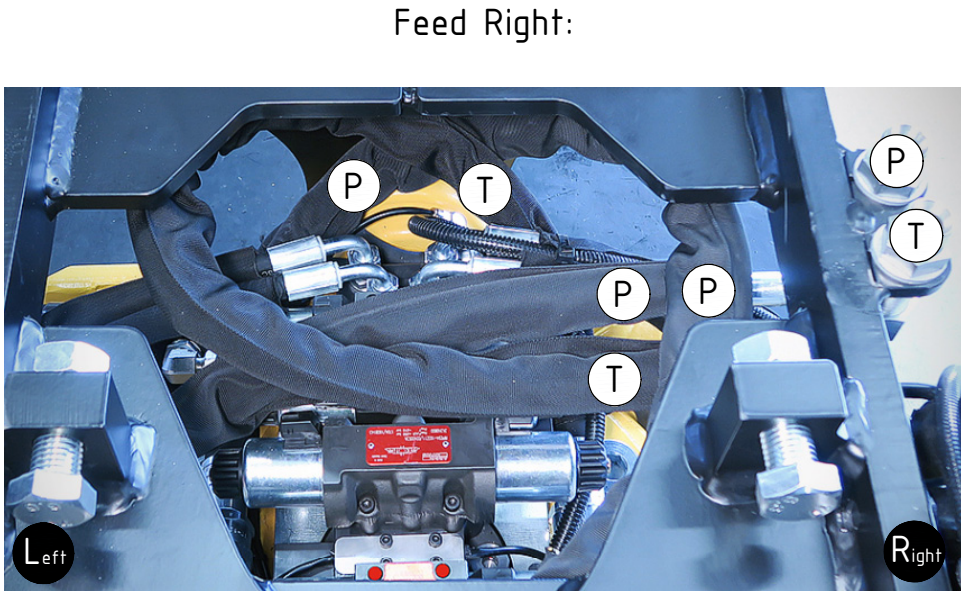
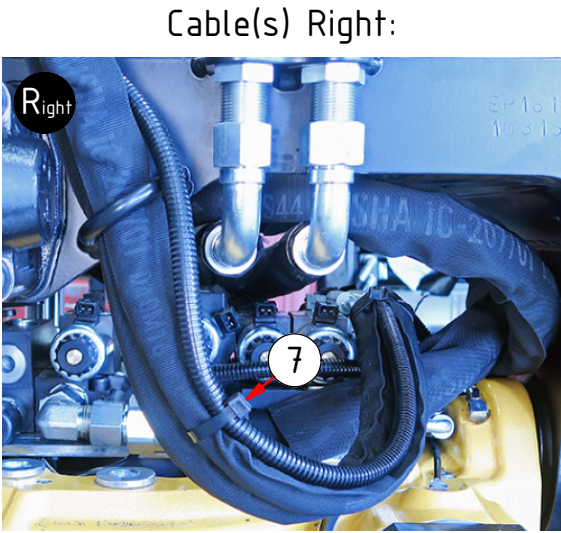
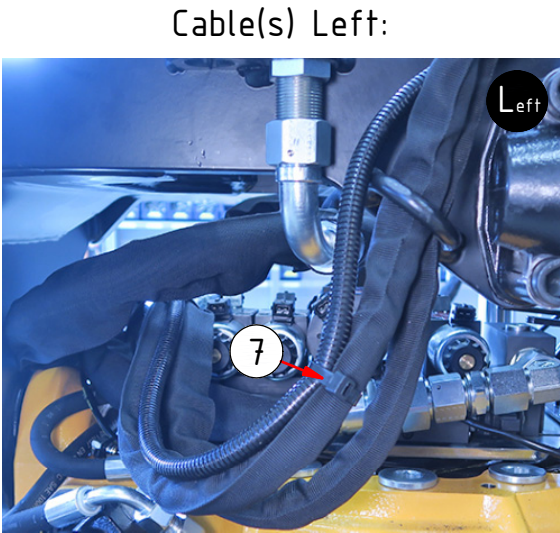
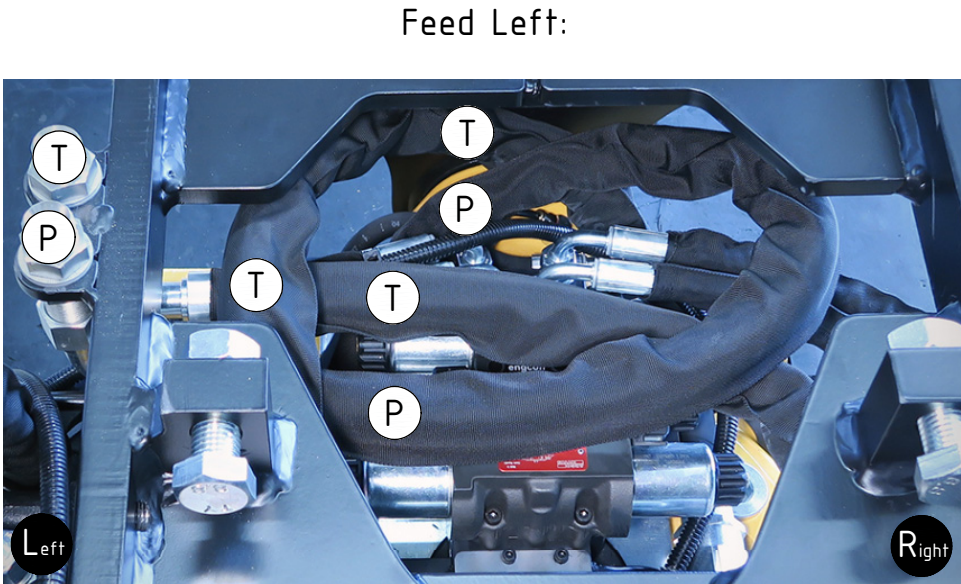
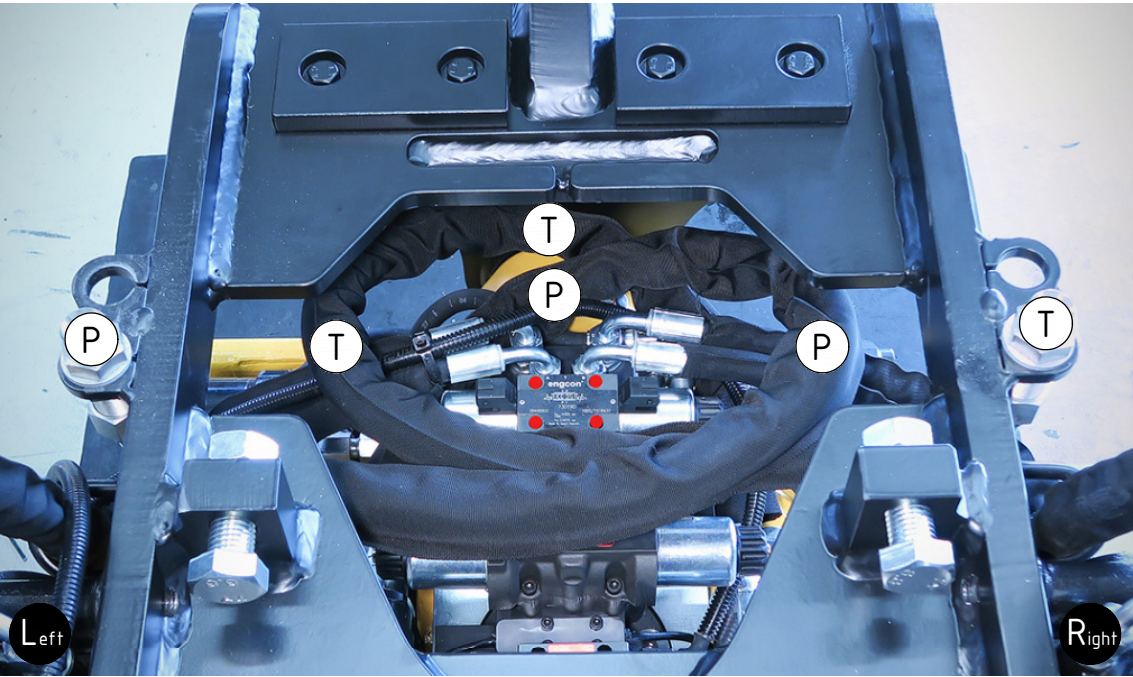




# EC233 - B27 Top part

FEED:  
3/4" (Std)

POS	DESCRIPTION	PART	QTY	COMMENTS
6	Attach feed hoses from control system			
7	Cable tie 7,8x360	1021587	1	

POS in order of assembly



Dashed lines for overview, mounts on other pages/assemblies.  indicates instruction.  represents hose.