

## COVERSHEET

### Planned document changes:

**Briefly:**

---

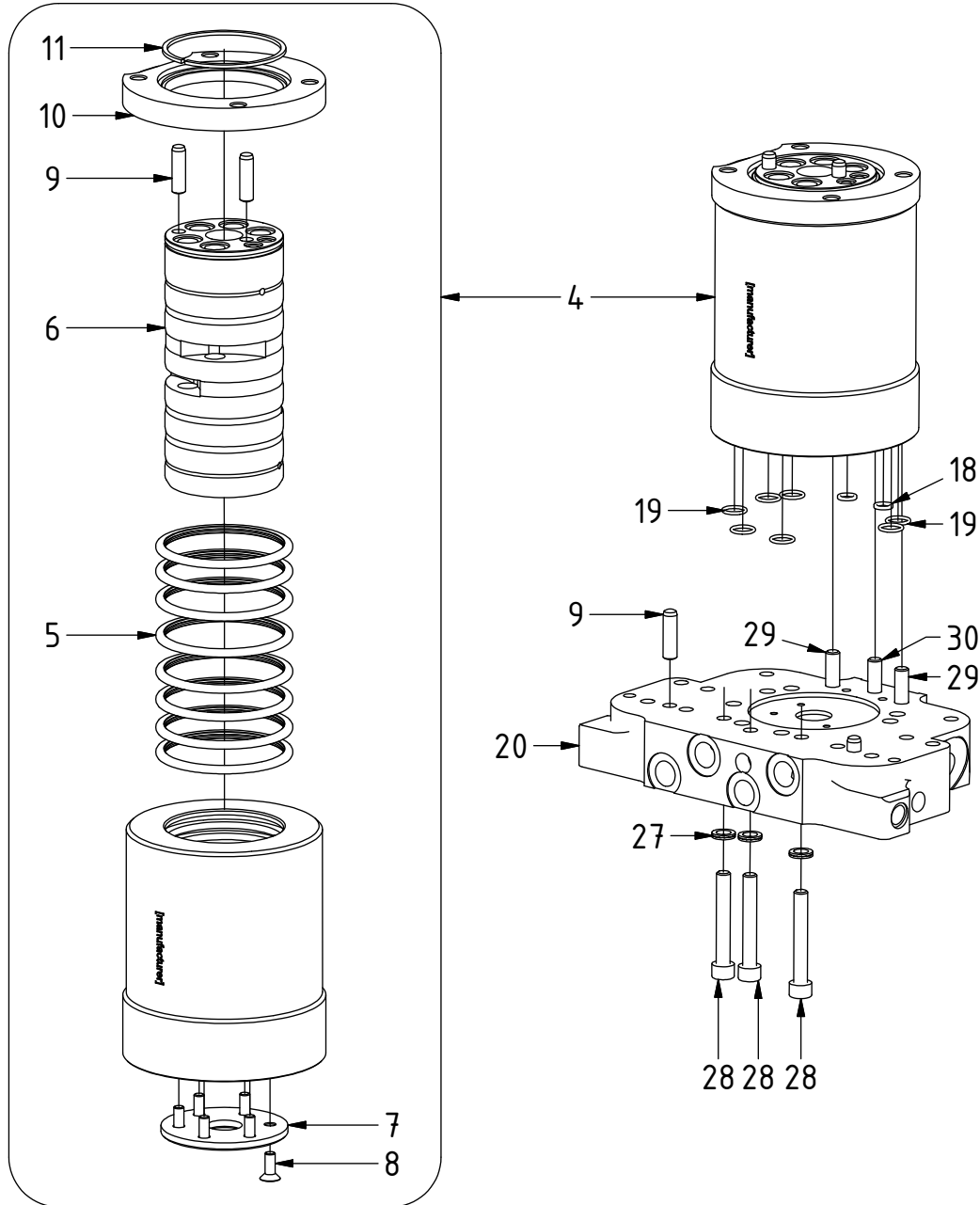
No planned changes.

### Document changes:

<b>Date:</b>	<b>Change:</b>	<b>Rev. after change:</b>
2020-03-03	QSM45 added.	C
2019-10-08	Layout/irrelevant.	B
2019-08-23	Complete with block added.	A
2018-05-31	New instruction.	-

# Connection block & Swivel 7-ch QSM

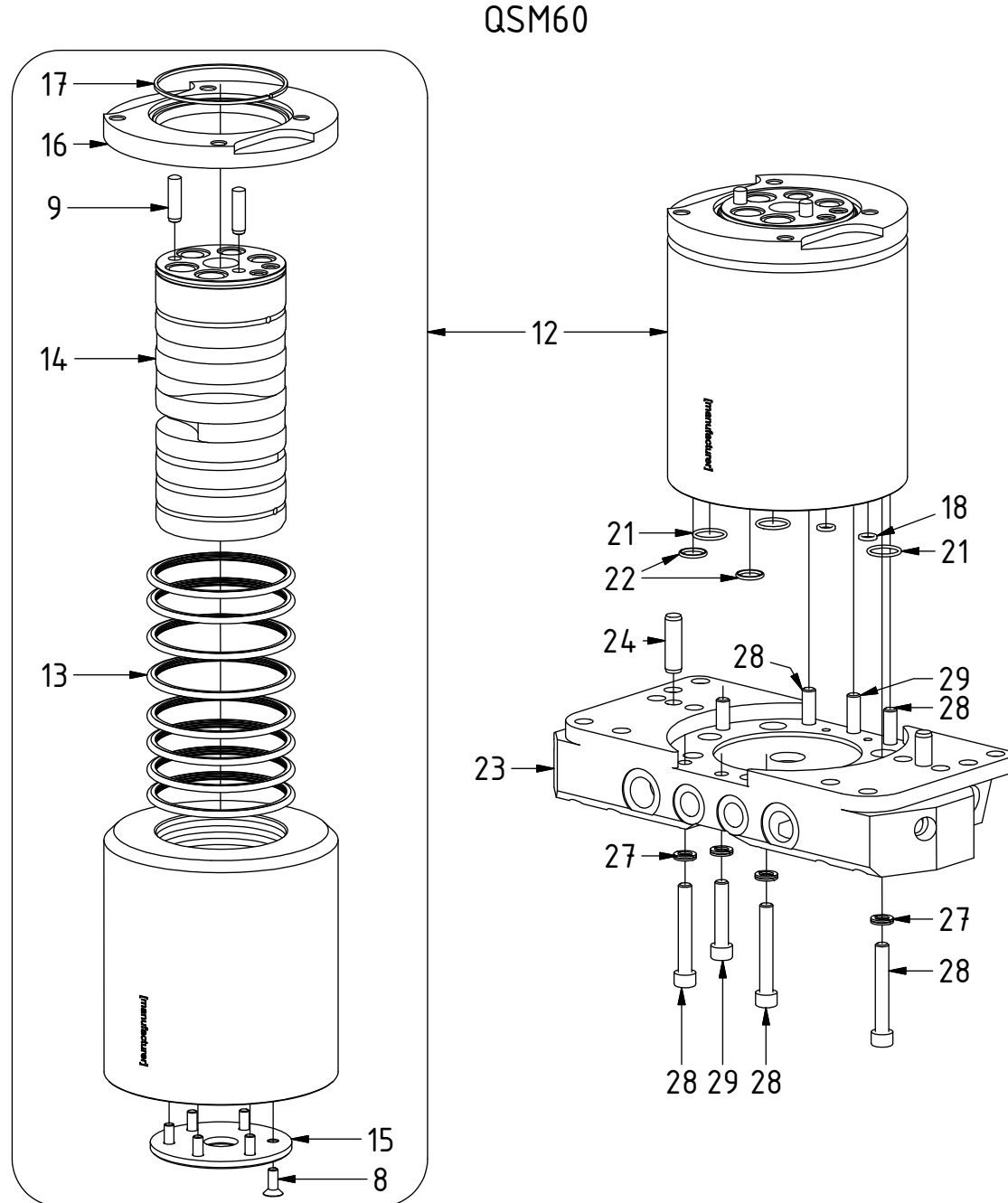
QSM45



POS	DESCRIPTION	PART	QTY	COMMENTS
1	Connectionblock & Swivel 7-ch QSM45	1056225	1	(POS.4, 18-20, 27-30 included)
4	Swivel 7-ch QSM45 Complete Steel	1056218	1	(POS.5-11 included)
5	Swivel Sealing 70/81x4,2 PU	7000536	8	
6	Swivel piston QSM45		1	
7	Wear washer QSM45		1	
8	Screw MF6S 6x16	610604	6	Torque: 14Nm
9	Dowel pin CPK 8x30 m6	6000175	2	QTY: 4 for QSM45
10	Fastening ring swivel QSM45		1	
11	Snap ring 7759: RSW 70		1	
18	O-ring square 7,66x1,68 nbr	7000579	2	QTY: 4 for QSM70
19	O-ring 10,82 x 1,78 nbr 70 shore		7	
20	Connection block QSM45	1052650	1	
27	Washer NL 8mm	611040	6	QTY: 8 for QSM60, 10 for QSM70
28	MC6S M8x55 12.9	610588	3	QTY: 6 for QSM60
29	MC6S M8x40 12.9	610437	2	
30	MC6S M8x30 12.9	610435	1	

POS in order of assembly

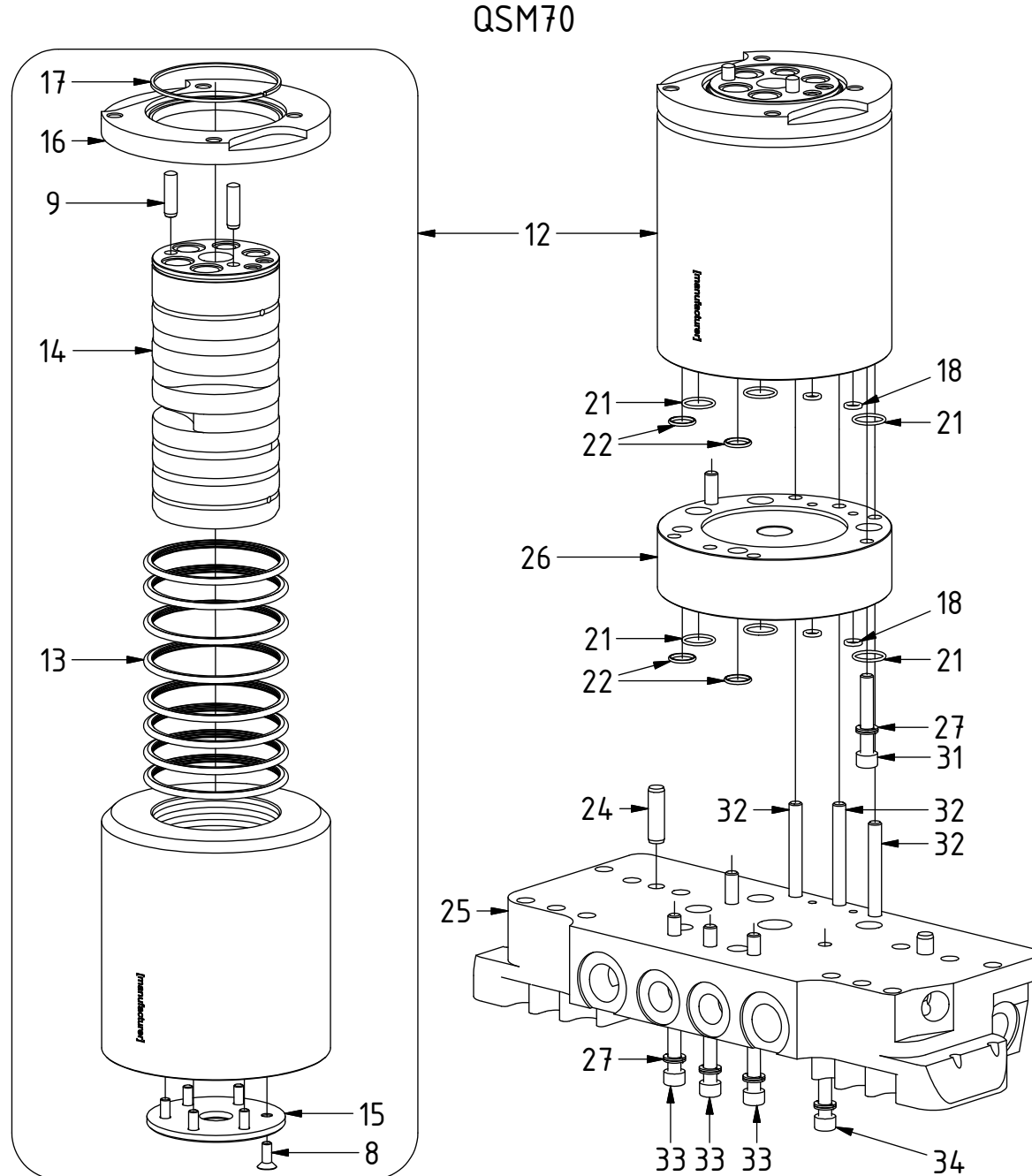
# Connection block & Swivel 7-ch QSM



POS	DESCRIPTION	PART	QTY	COMMENTS
2	Connectionblock & Swivel 7-ch QSM60	1050600	1	(POS.12, 18, 21-24, 27-29 incl.)
8	Screw MF6S 6x16	610604	6	Torque: 14Nm
9	Dowel pin CPK 8x30 m6	6000175	2	QTY: 4 for QSM45
12	Swivel 7-ch QSM60/70 Compl. Steel	1049276	1	(POS.8-9, 13-17 included)
13	Swivel Sealing 80/91x4,2 PTFE	1039544	8	
14	Swivel Piston QSM60/70	1046696	1	
15	Wear washer QSM60/70		1	
16	Fastening ring swivel QSM60/70	1044052	1	
17	Snap ring 80/77,4 x2	1039555	1	
18	O-ring square 7,66x1,68 nbr	7000579	2	QTY: 4 for QSM70
21	O-ring 17.17x1.78 N/70	710977	3	QTY: 6 for QSM70
22	O-ring 14x1,78 70 shore	710975	2	QTY: 4 for QSM70
23	Connection block QSM60	1049290	1	
24	Cylindrical pin	1015672	2	
27	Washer NL 8mm	611040	6	QTY: 8 for QSM60, 10 for QSM70
28	MC6S M8x55 12.9	610588	3	QTY: 6 for QSM60
29	MC6S M8x40 12.9	610437	2	

POS in order of assembly

# Connection block & Swivel 7-ch QSM



POS	DESCRIPTION	PART	QTY	COMMENTS
3	Connectionblock & Swivel 7-ch QSM70	1050703	1	(POS.12, 18, 21-22, 24-27, 31-34)
8	Screw MF6S 6x16	610604	6	Torque: 14Nm
9	Dowel pin CPK 8x30 m6	6000175	2	QTY: 4 for QSM45
12	Swivel 7-ch QSM60/70 Compl. Steel	1049276	1	(POS.8-9, 13-17 included)
13	Swivel Sealing 80/91x4,2 PTFE	1039544	8	
14	Swivel Piston QSM60/70	1046696	1	
15	Wear washer QSM60/70		1	
16	Fastening ring swivel QSM60/70	1044052	1	
17	Snap ring 80/77,4 x2	1039555	1	
18	O-ring square 7,66x1,68 nbr	7000579	2	QTY: 4 for QSM70
21	O-ring 17.17x1.78 N/70	710977	3	QTY: 6 for QSM70
22	O-ring 14x1,78 70 shore	710975	2	QTY: 4 for QSM70
24	Cylindrical pin	1015672	2	
25	Connection block QSM70	1049313	1	
26	Extender swivel QSM70 Steel	1050762	1	
27	Washer NL 8mm	611040	6	QTY: 8 for QSM60, 10 for QSM70
31	MC6S M8x50 12.9	610439	2	
32	MC6S M8x90 12.9	610444	3	
33	MC6S M8x100 12.9	610447	3	
34	MC6S M8x65 12.9	610442	2	

POS in order of assembly