

COVERSHEET



Planned document changes:

Briefly:

QS45/50 option 1el:
Torque for powerplug cable gland: 6Nm.

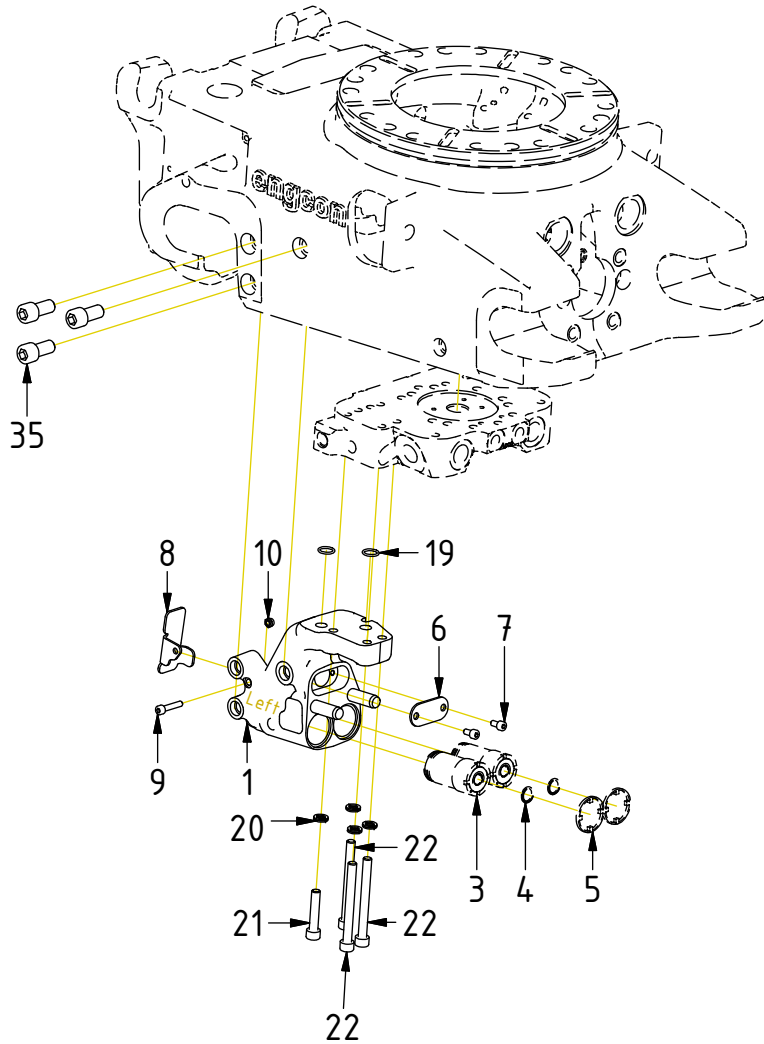
Document changes:

| Date: | Change: | Rev. after change: |
|--------------|--|-------------------------------|
| 2023-04-27 | QSM50 added. | I |
| 2022-02-10 | Fastening details for QSM cover plate added. | H |
| 2021-12-06 | ALU blocks updated to cast. | G |
| 2020-09-22 | QS50 screws for block updated. | F |
| 2020-09-14 | Screws updated to ZFSHL. | E |
| 2020-03-31 | Screws for coverplate corrected. | D |
| 2020-03-26 | Couplings replaced. Spare parts added. | C |
| 2020-02-19 | QSM45 added. | B |
| 2019-03-13 | Missing torques and glue added. | A |
| 2018-03-27 | New document. | - |

Readers note: Indicates instruction. Represents Hose.

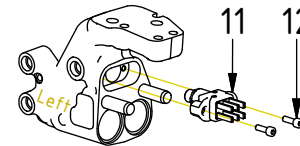
Dashed lines for overview, mounts
on other pages/assemblies.

QSM45

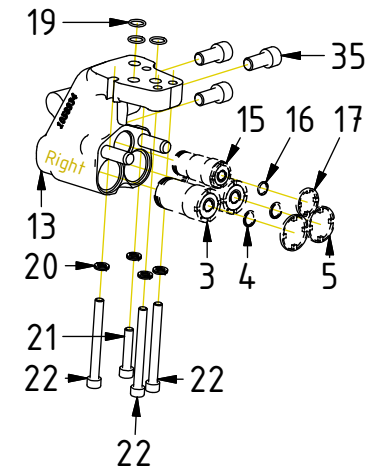


| POS | DESCRIPTION | PART | QTY | COMMENTS |
|-----|------------------------------------|---------|-----|------------------------------|
| 1 | Bl. 45/50W Hitch QSM 2hy. L Compl. | 1063741 | 1 | (POS.2-3, 5 incl.) |
| 2 | Block ECO45/50 W Hitch QSM Left | 1058900 | 1 | |
| 3 | Coupling ECO W 3/8" V3 | 1053029 | 2 | Torque: 60Nm. (POS.4 incl.) |
| 4 | Flat sealing for ECO W 3/8" V3 | 1052976 | 2 | |
| 5 | Dirt protection block ECO 3/8" | 1028274 | 2 | |
| 6 | Cover plate powerplug QSM | 1049191 | 1 | |
| 7 | Screw MC6S M5x10 12.9 | 610594 | 2 | |
| 8 | Cover plate cable ECO45/50 W QSM | 1064282 | 1 | |
| 9 | Screw MC6S M5x25 12.9 | 610402 | 1 | |
| 10 | Lock Nut M6M M5x0,8 8,8 FZB | 610920 | 1 | |
| 11 | Power Plug ECO45/50 W QSM | 1050792 | 1 | Connect to slip ring QSM |
| 12 | Screw MC6S M5x16 12.9 | 610401 | 2 | Loxéal 55-02 |
| 13 | Bl. ECO45W Hitch QSM 2hy. R Compl. | 1063740 | 1 | (POS.3, 5, 14 incl.) |
| 14 | Block ECO45 W Hitch QSM Right | 1058935 | 1 | |
| 15 | Coupling ECO 1/4" V3 | 1053683 | 1 | Torque: 60Nm. (POS.16 incl.) |
| 16 | Flat sealing for ECO 1/4" V3 | 1053936 | 1 | |
| 17 | Dirt protection block ECO 1/4" | 1054419 | 1 | |
| 19 | O-ring 12,42x1,78 | 710973 | 2 | QTY: 3 on QSM45 Right block |
| 20 | Washer NL 8mm | 611040 | 4 | |
| 21 | Screw MC6S M8x40 12.9 ZFSHL | 6000145 | 1 | Torque: 40Nm |
| 22 | Screw MC6S M8x80 12.9 ZFSHL | 6000285 | 3 | Torque: 40Nm |
| 35 | Screw MC6S M12x25 12.9 ZFSHL | 6000164 | 3 | Loxéal 83-52 |

Option 1 el:

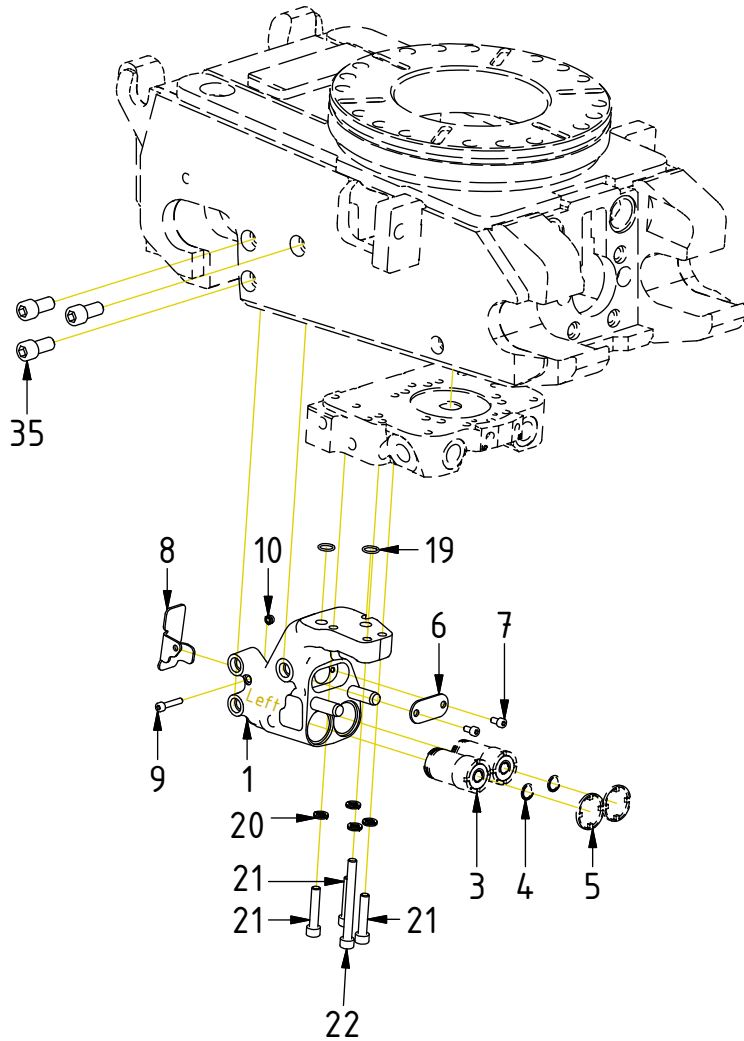


Option 2 bl:



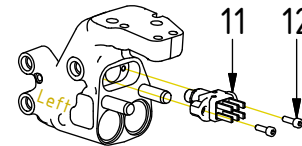
POS in order of assembly

QSM50

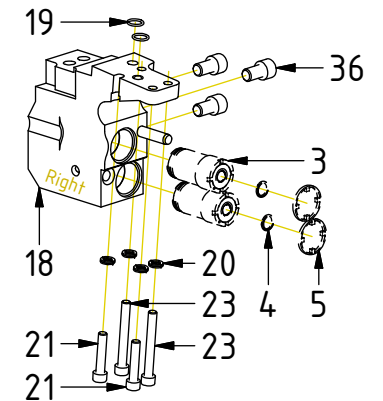


| POS | DESCRIPTION | PART | QTY | COMMENTS |
|-----|------------------------------------|---------|-----|-----------------------------|
| 1 | Bl. 45/50W Hitch QSM 2hy. L Compl. | 1063741 | 1 | (POS.2-3, 5 incl.) |
| 2 | Block ECO45/50 W Hitch QSM Left | 1058900 | 1 | |
| 3 | Coupling ECO W 3/8" V3 | 1053029 | 2 | Torque: 60Nm. (POS.4 incl.) |
| 4 | Flat sealing for ECO W 3/8" V3 | 1052976 | 2 | |
| 5 | Dirt protection block ECO 3/8" | 1028274 | 2 | |
| 6 | Cover plate powerplug QSM | 1049191 | 1 | |
| 7 | Screw MC6S M5x10 12.9 | 610594 | 2 | |
| 8 | Cover plate cable ECO45/50 W QSM | 1064282 | 1 | |
| 9 | Screw MC6S M5x25 12.9 | 610402 | 1 | |
| 10 | Lock Nut M6M M5x0,8 8,8 FZB | 610920 | 1 | |
| 11 | Power Plug ECO45/50 W QSM | 1050792 | 1 | Connect to slip ring QSM |
| 12 | Screw MC6S M5x16 12.9 | 610401 | 2 | Loxéal 55-02 |
| 18 | Bl. ECO50W Hitch QSM 2hy. R Compl. | 1069491 | 1 | (POS.3, 5 incl.) |
| 19 | O-ring 12,42x1,78 | 710973 | 2 | QTY: 3 on QSM45 Right block |
| 20 | Washer NL 8mm | 611040 | 4 | |
| 21 | Screw MC6S M8x40 12.9 ZFSL | 6000145 | 1 | Torque: 40Nm |
| 22 | Screw MC6S M8x80 12.9 ZFSL | 6000285 | 3 | Torque: 40Nm |
| 23 | Screw MC6S M8x65 12.9 ZFSL | 6000398 | 2 | Torque: 40Nm |
| 35 | Screw MC6S M12x25 12.9 ZFSL | 6000164 | 3 | Loxéal 83-52 |
| 36 | Screw MC6S M12x20 12.9 | 610472 | 3 | Loxéal 83-52 |
| 41 | Block ECO50 W Hitch QSM Right | 1069488 | 1 | |

Option 1 el:



Option 2 bl:

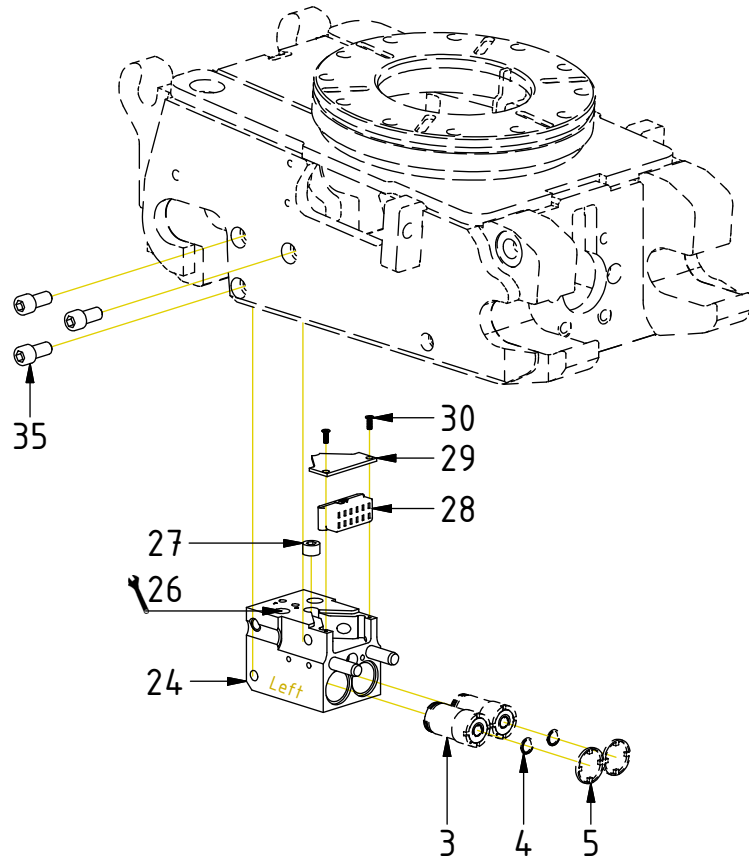


POS in order of assembly

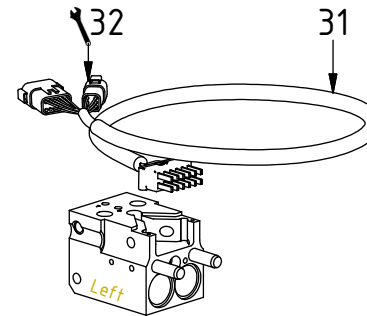
QS45

| POS | DESCRIPTION | PART | QTY | COMMENTS |
|-----|------------------------------------|---------|-----|--------------------------------------|
| 3 | Coupling ECO W 3/8" V3 | 1053029 | 2 | Torque: 60Nm. (POS.4 incl.) |
| 4 | Flat sealing for ECO W 3/8" V3 | 1052976 | 2 | |
| 5 | Dirt protection block ECO 3/8" | 1028274 | 2 | |
| 24 | Block ECO45/50 W Hitch 2hy. Compl. | 1055712 | 1 | (POS.3, 5, 25 incl.) |
| 25 | Block ECO45/50 W Hitch | 1042479 | 1 | |
| 26 | Adapters according to Quick hitch | | | See "Quick hitch" |
| 27 | Pipe plug DIN 906 M16x1,5 | 711529 | 1 | |
| 28 | Plug ECO W - Hitch | 1041814 | 1 | |
| 29 | Coverplate block ECO45 W Hitch | 1041098 | 2 | |
| 30 | Screw MKFT 4x12 | 6000121 | 2 | |
| 31 | Power Plug ECO45/50 W DTM | 1042244 | 1 | |
| 32 | 6P, connect to slip ring | | | See "Slip rings" (additional cables) |
| 35 | Screw MC6S M12x25 12.9 ZFSLH | 6000164 | 3 | Loxal 83-52 |

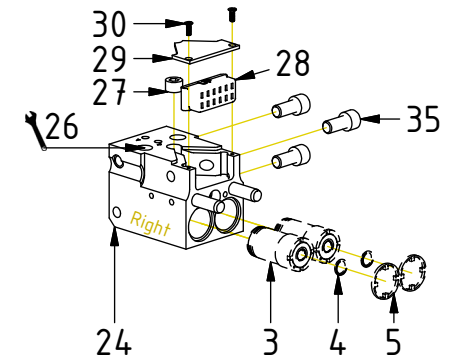
POS in order of assembly



Option 1 el:

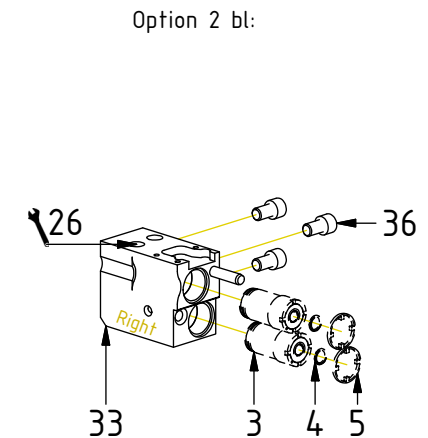
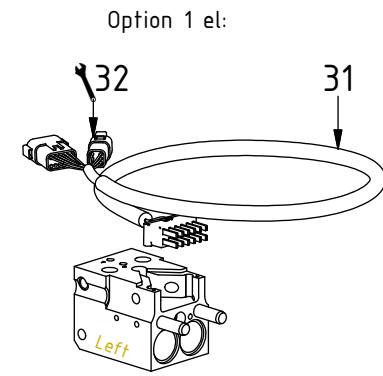
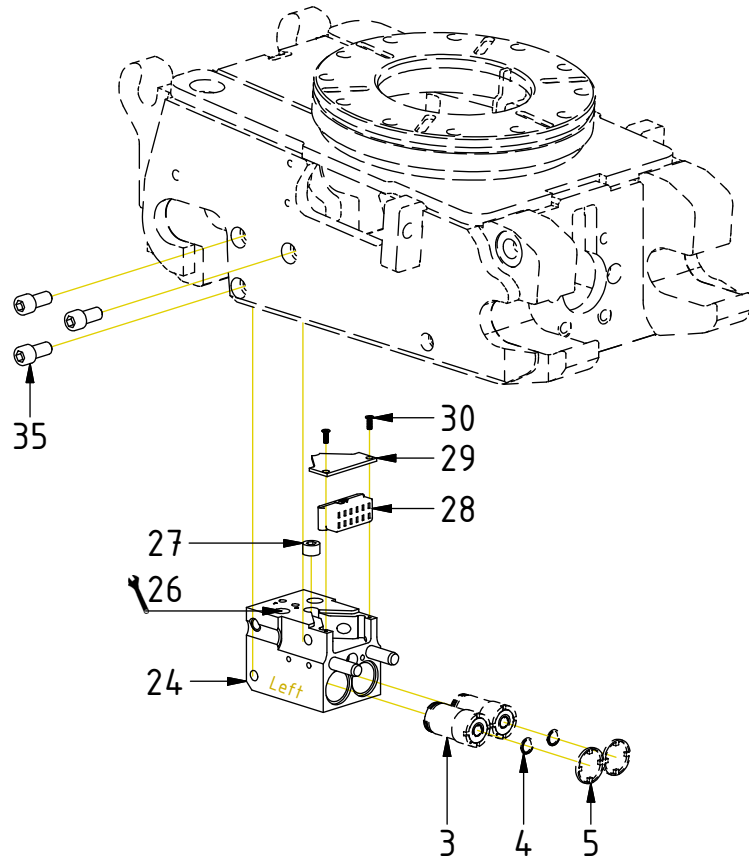


Option 2 bl:



QS50

| POS | DESCRIPTION | PART | QTY | COMMENTS |
|-----|------------------------------------|---------|-----|--------------------------------------|
| 3 | Coupling ECO W 3/8" V3 | 1053029 | 2 | Torque: 60Nm. (POS.4 incl.) |
| 4 | Flat sealing for ECO W 3/8" V3 | 1052976 | 2 | |
| 5 | Dirt protection block ECO 3/8" | 1028274 | 2 | |
| 24 | Block ECO45/50 W Hitch 2hy. Compl. | 1055712 | 1 | (POS.3, 5, 25 incl.) |
| 25 | Block ECO45/50 W Hitch | 1042479 | 1 | |
| 26 | Adapters according to Quick hitch | | | See "Quick hitch" |
| 27 | Pipe plug DIN 906 M16x1,5 | 711529 | 1 | |
| 28 | Plug ECO W - Hitch | 1041814 | 1 | |
| 29 | Coverplate block ECO45 W Hitch | 1041098 | 2 | |
| 30 | Screw MKFT 4x12 | 6000121 | 2 | |
| 31 | Power Plug ECO45/50 W DTM | 1042244 | 1 | |
| 32 | 6P, connect to slip ring | | | See "Slip rings" (additional cables) |
| 33 | Block ECO50 W Hitch 2hy. R Compl. | 1055714 | 1 | (POS.3, 5, 34 incl.) |
| 34 | Block ECO50 W Hitch Right | 1041643 | 1 | |
| 35 | Screw MC6S M12x25 12.9 ZFSHL | 6000164 | 3 | Loxéal 83-52 |
| 36 | Screw MC6S M12x20 12.9 | 610472 | 3 | Loxéal 83-52 |



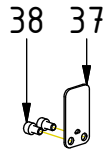
POS in order of assembly

SPARE PARTS

| POS | DESCRIPTION | PART | QTY | COMMENTS |
|-----|----------------------------------|---------|-----|--|
| 3 | Coupling ECO W 3/8" V3 | 1053029 | 2 | Torque: 60Nm. (POS.4 incl.) |
| 4 | Flat sealing for ECO W 3/8" V3 | 1052976 | 2 | |
| 8 | Cover plate cable ECO45/50 W QSM | 1064282 | 1 | |
| 37 | Cover plate cable ECO45 QSM | 1055947 | 1 | Used until 2021-09 |
| 38 | Screw MC6S M6x10 12.9 Geomet | 611512 | 2 | |
| 39 | O-ring 12,42x1,78 | 712417 | 2 | Used until 2020-03 Seperate seal kit: 7000045 |

POS in order of assembly

QSM45:



Used with ALU block 0 el.

QS45/50:

