

COVERSHEET

Planned document changes:


Briefly:


No planned changes.

Document changes:

Date:	Change:	Rev. after change:
2024-08-26	Top part corrected.	H
2020-10-16	Screws updated. Photos added.	G
2020-01-28	Photos updated.	F
2019-01-04	EC-Oil options updated.	E
2018-05-17	New universal terminal.	D
2018-01-23	Block config. for 2Bl.Feed added.	C
2017-10-05	Clarification Feed Left/Right.	B
2017-09-07	Layout/irrelevant.	A
2017-08-28	New document.	-

Readers note:

 Indicates instruction.

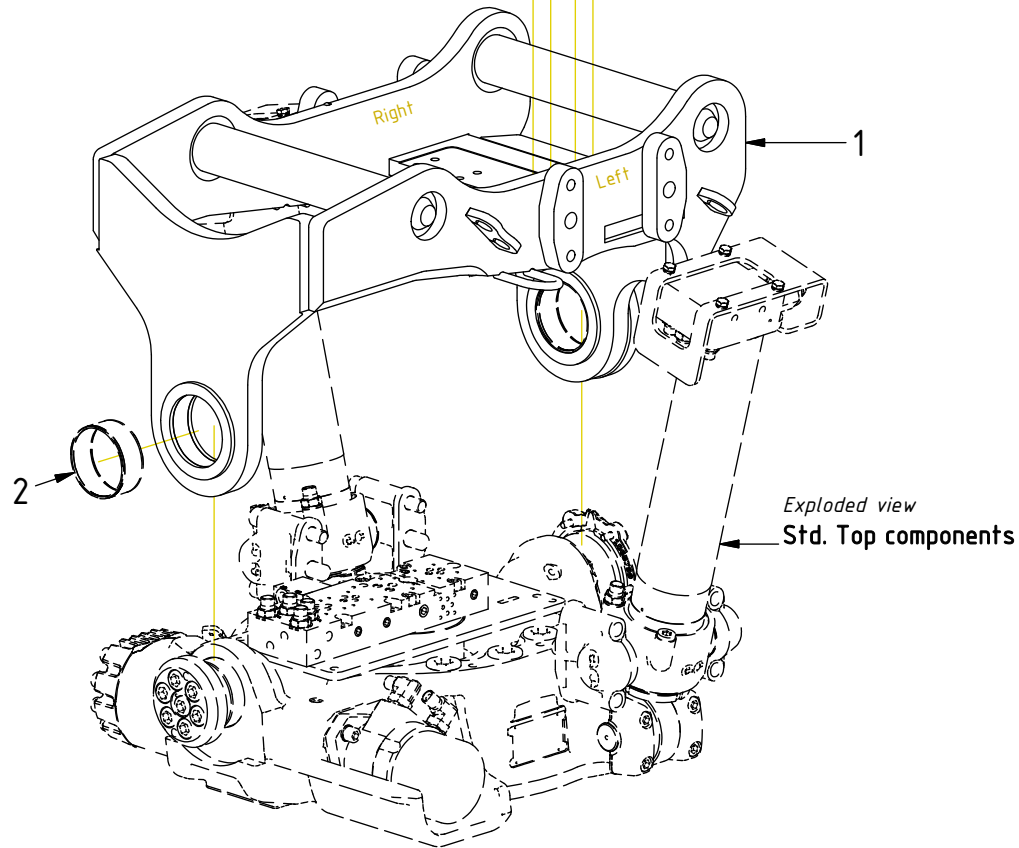
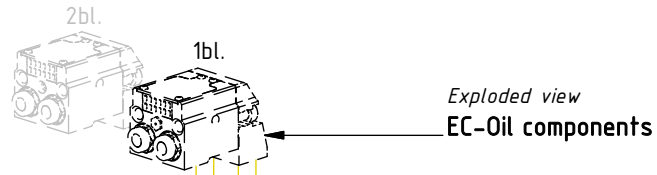
 Represents Hose.

Dashed lines for overview, mounts
on other pages/assemblies.

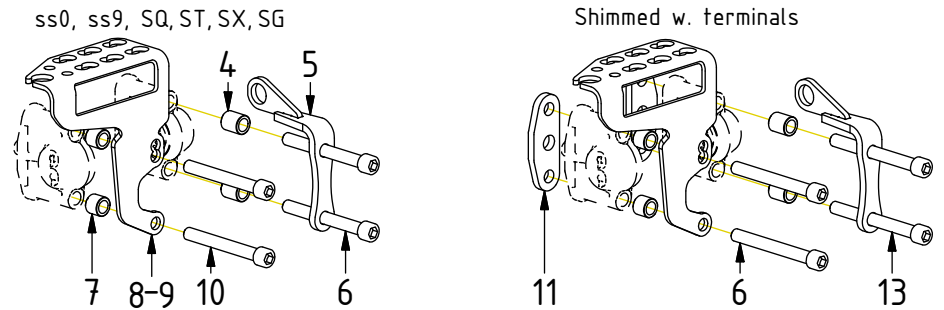
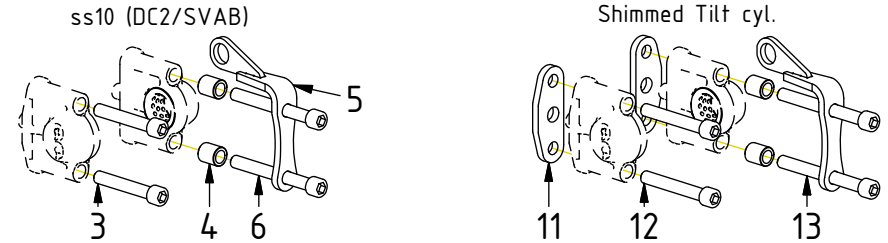
EC219 ECHF - Top part QS60

POS	DESCRIPTION	PART	QTY	COMMENTS
1	Top part QS60 EC219S	1064197	1	(POS.2 incl.)
2	Bushing Ø85/90x35 WB802	630321	4	
3	Screw MC6S M16x100 12.9 ZFSHL	6000156	4	Torque: 333Nm
4	Spacer terminal 28mm	1030616	4	
5	Hose terminal NG10	1027200	2	
6	Screw MC6S M16x140 12.9 ZFSHL	6000152	4	Torque: 333Nm
7	Spacer terminal 20mm	1023777	4	
8	Hose terminal 8-hoses Left V2	1047137	1	
9	Hose terminal 8-hoses Right V2	1047138	1	
10	Screw MC6S M16x130 12.9 ZFSHL	6000154	4	Torque: 333Nm
11	Shim Yoke bracket	1007041	4	For option Shimmied Tilt cyl.
12	Screw MC6S M16x110 12.9 ZFSHL	6000253	4	Torque: 333Nm
13	Screw MC6S M16x150 12.9	610537	4	Torque: 333Nm

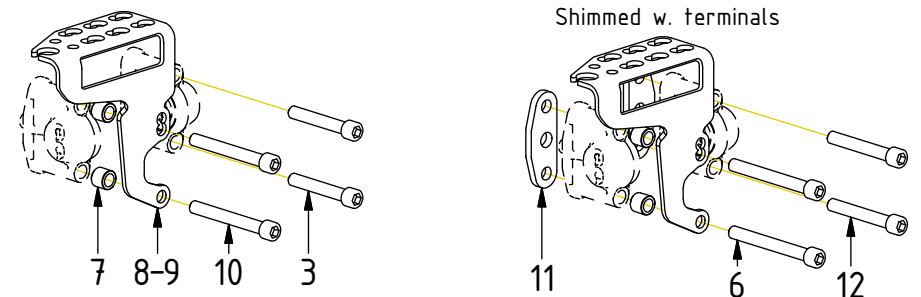
POS in order of assembly

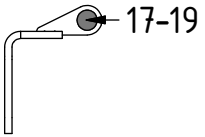


Feed 3/4" (std)



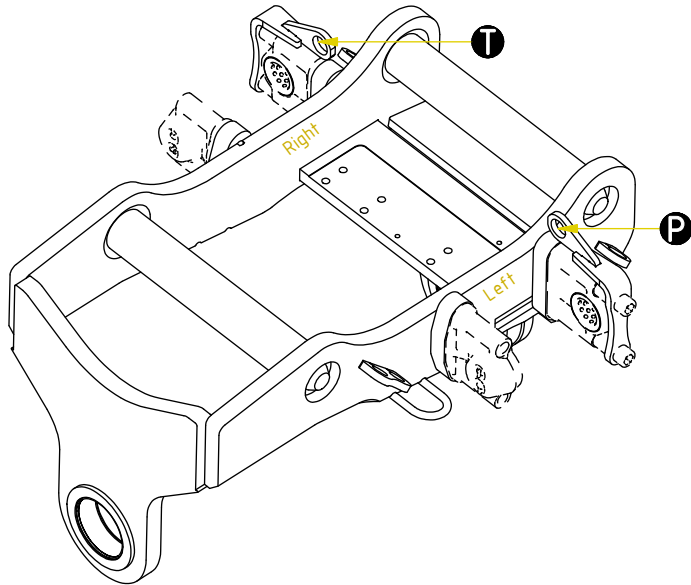
Feed 1/2" (option)



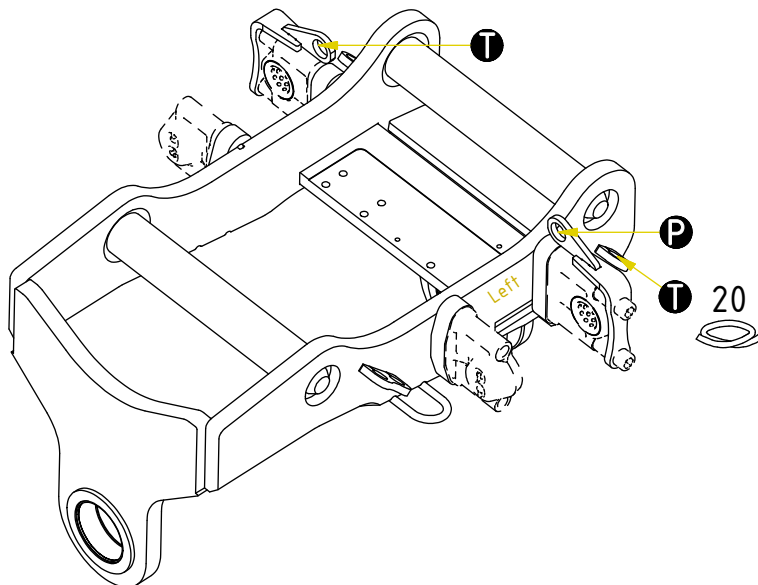


FEED
3/4" (std)

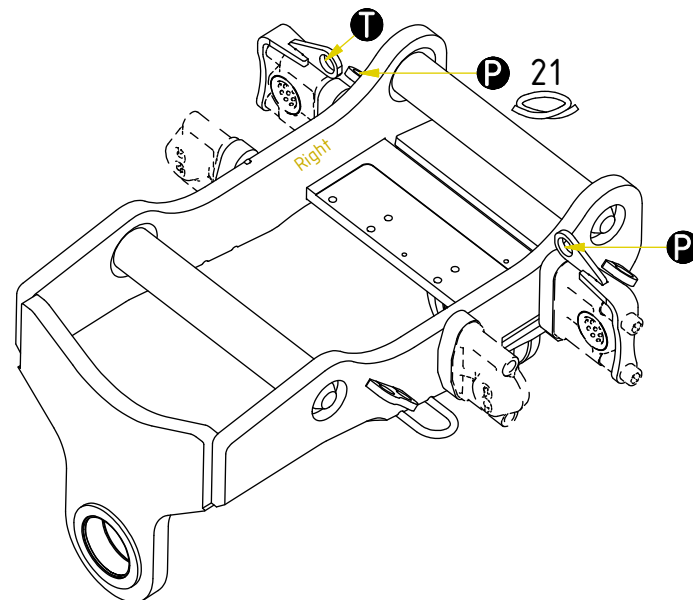
Main feed



Feed Left

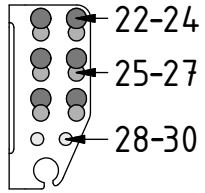


Feed Right

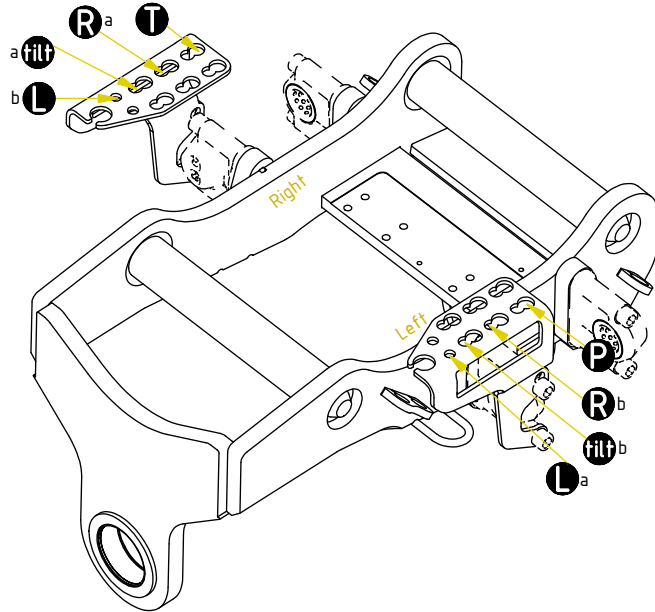


POS	DESCRIPTION	PART	QTY	COMMENTS
14	For optional functions / terminals			See "Std. Top components"
15	For Feed Hoses			See "Control system"
17	Washer NL 1"	611095	2	
18	Adapter 1260-12-12 (3/4")	712210	2	
19	Counternut 1270-12 (3/4")	712211	2	
20	Hose Bridge Feed Left	7000161	1	Bridge to Left side (use POS.17-19)
21	Hose Bridge Feed Right	7000162	1	Bridge to Right side (use POS.17-19)

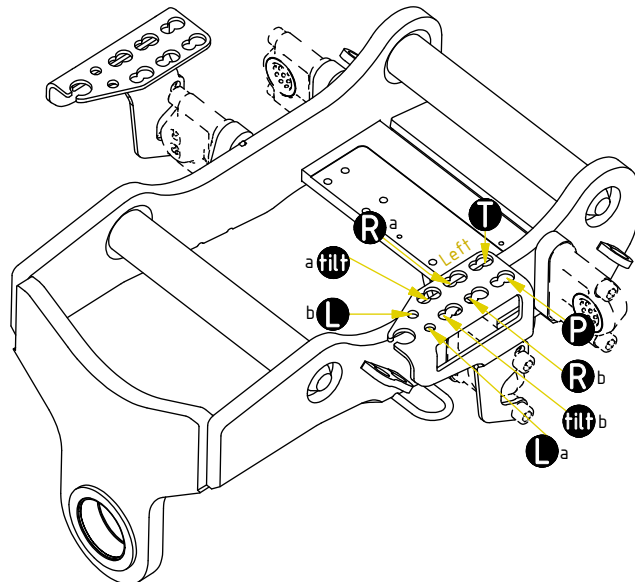
POS in order of assembly



FEED
1/2" (option)



Feed Left



Feed Right

POS	DESCRIPTION	PART	QTY	COMMENTS
16	For Functions & Feed Hoses			See "Control system"
22	Washer NL 20mm	611098	2	
23	Adapter 1260-08-08 (1/2")	710244	2	
24	Counternut 1270-08 (1/2")	710254	2	
25	Washer NL 16mm	611044	2	
26	Adapter 1260-06-32 (3/8")	710242	2	
27	Counternut 1270-06 (3/8")	710252	2	
28	Washer NL 1/2"	611096	2	
29	Adapter 1260-04-04 (1/4")	710240	2	
30	Counternut 1270-04 (1/4")	710250	2	

POS in order of assembly

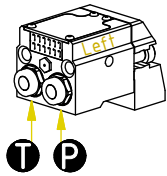
- T** ← 31
- P** ← 31
- cap** ← 31-32
- R** ← 33
- drn** ← 34-37

FEED
EC-Oil

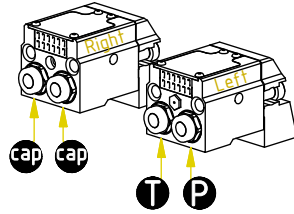
POS	DESCRIPTION	PART	QTY	COMMENTS
15	For Feed Hoses			See "Control system"
31	Adapter 401-08-08 90° (1/2")	710156	2	
32	Protective cap 155-08 (1/2")	711627	2	
33	Adapter 401-06-08 90° (3/8"-1/2")	710157	2	
34	Washer GBR06 3/8	710703	1	
35	Adapter 235-06-04	710133	1	
36	Washer GBR04 1/4	710702	2	
37	Banjo bolt 4451-04 (1/4")	710271	1	
38	Plug 70125-08 (1/2")	711500	2	

ss10 (DC2/SVAB)

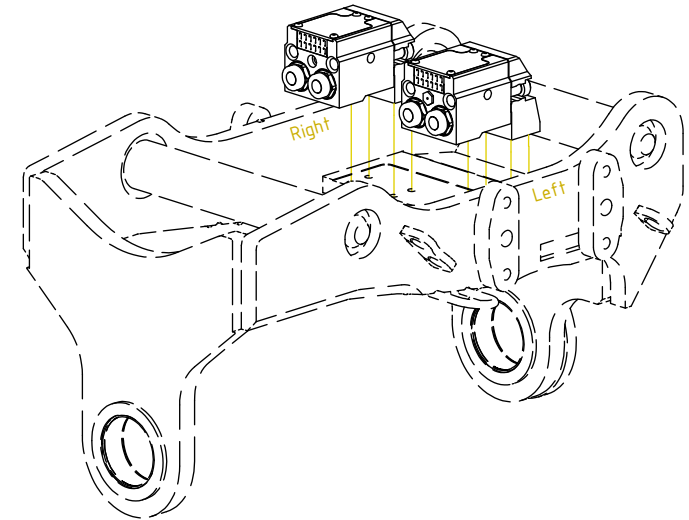
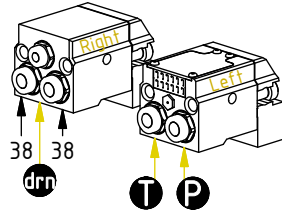
2 hyd.



4 hyd.

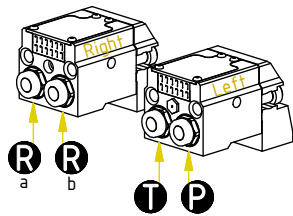


DC2 5 hyd.

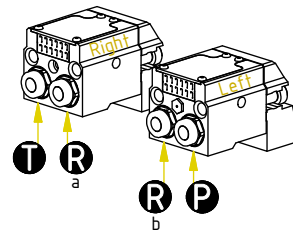


ss9

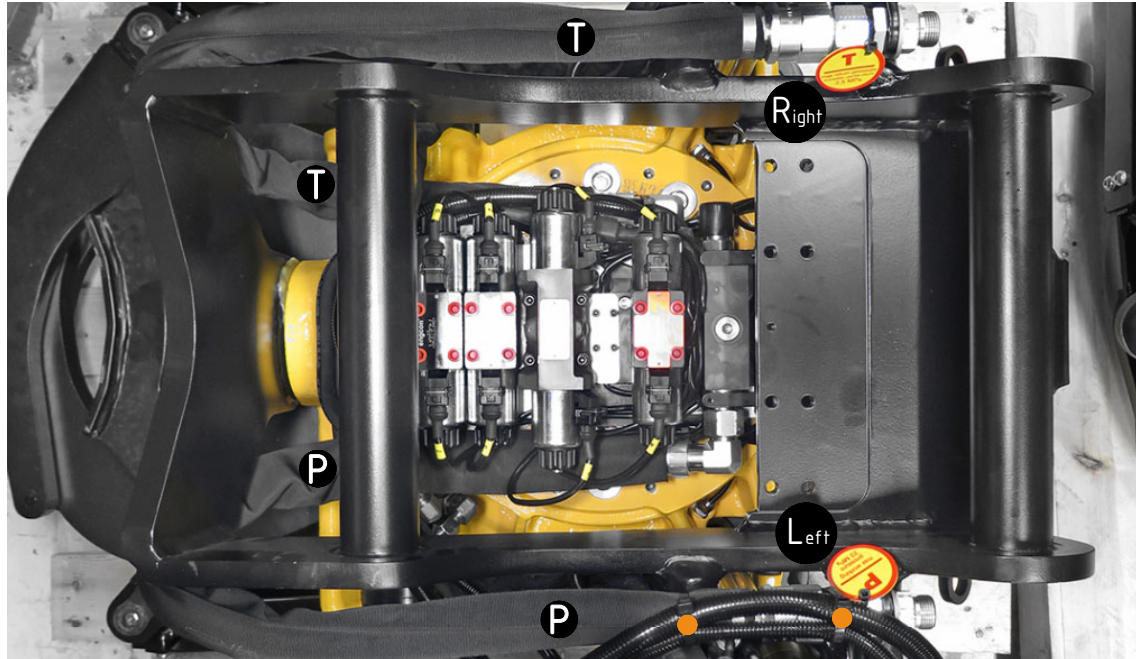
4 hyd.



4 hyd. 2Bl.Feed

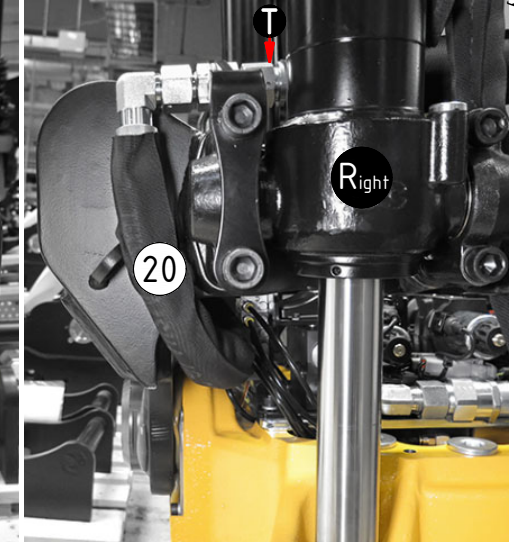
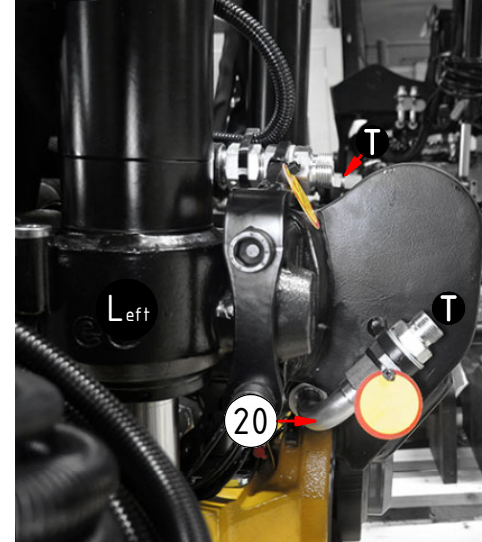


FEED
3/4" (std)

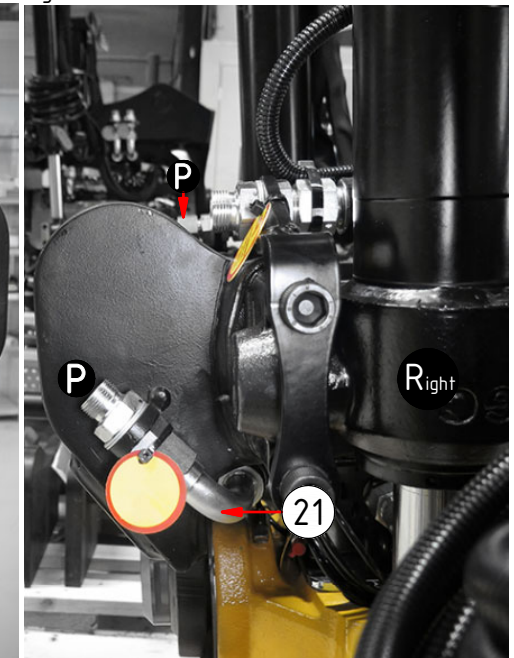
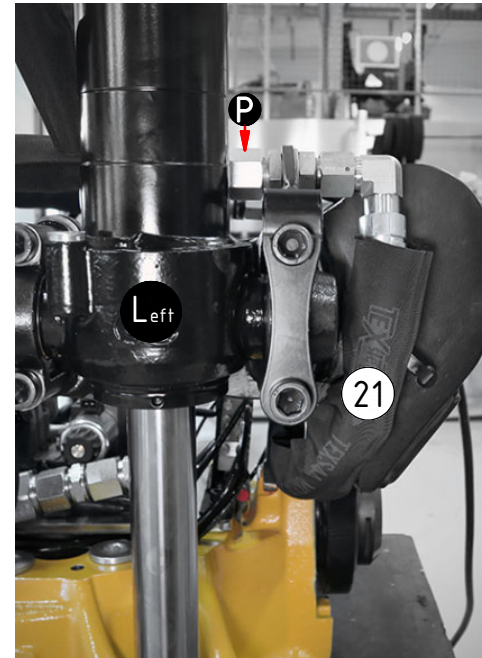


POS	DESCRIPTION	PART	QTY	COMMENTS
14	For optional functions / terminals			See "Std. Top components"
15	For Feed Hoses			See "Control system"
20	Hose Bridge Feed Left	7000161	1	Bridge to Left side (use POS.17-19)
21	Hose Bridge Feed Right	7000162	1	Bridge to Right side (use POS.17-19)
● Use cable ties				

Feed Left



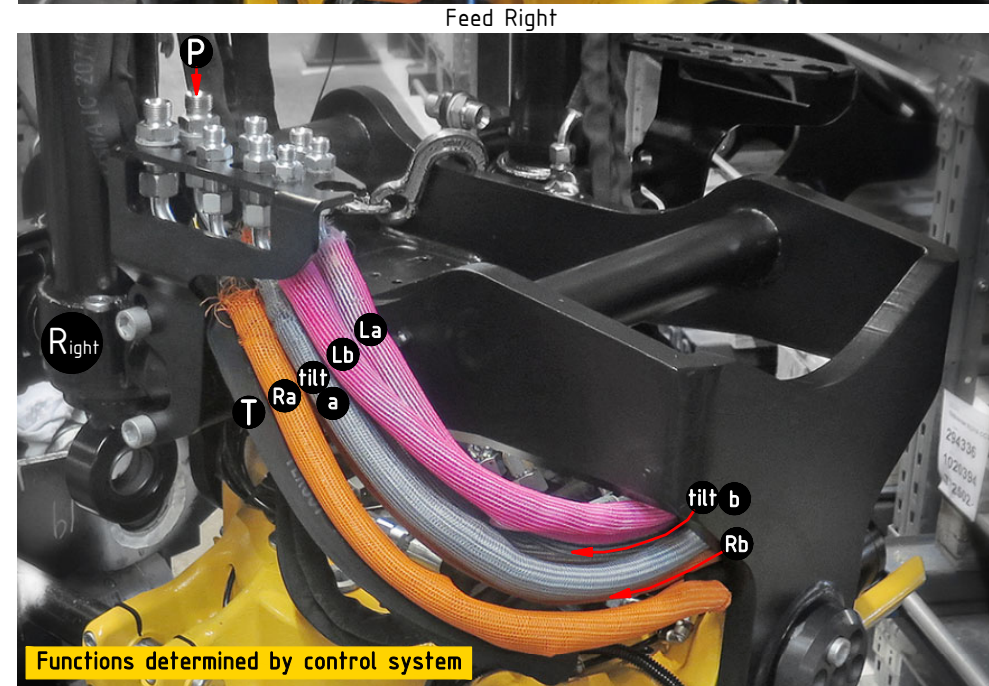
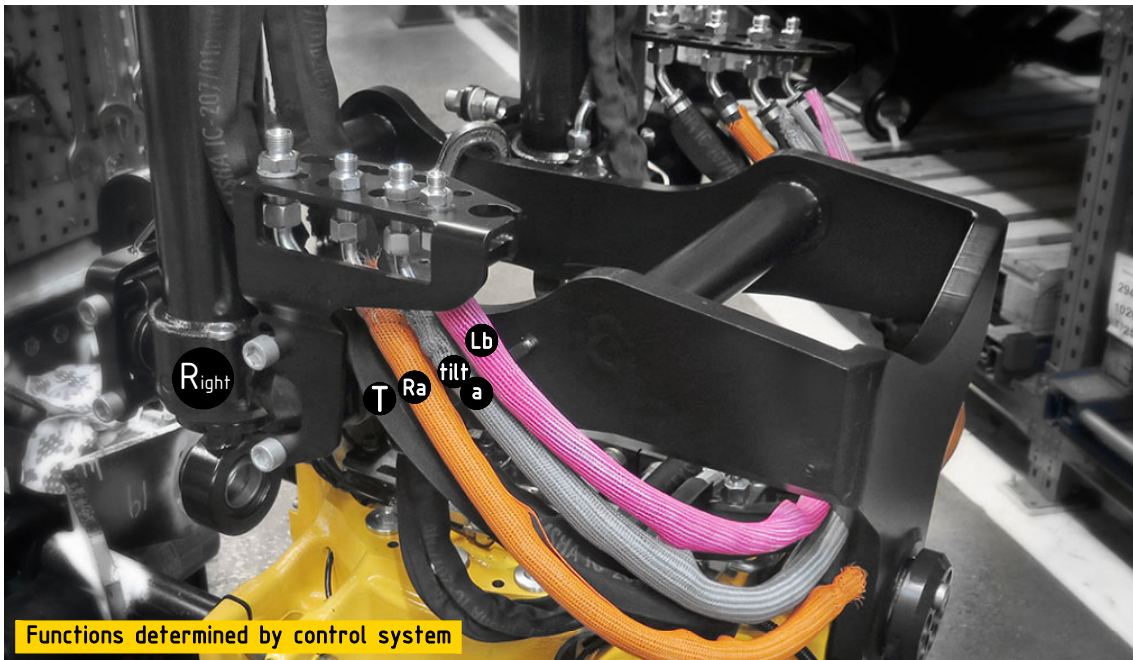
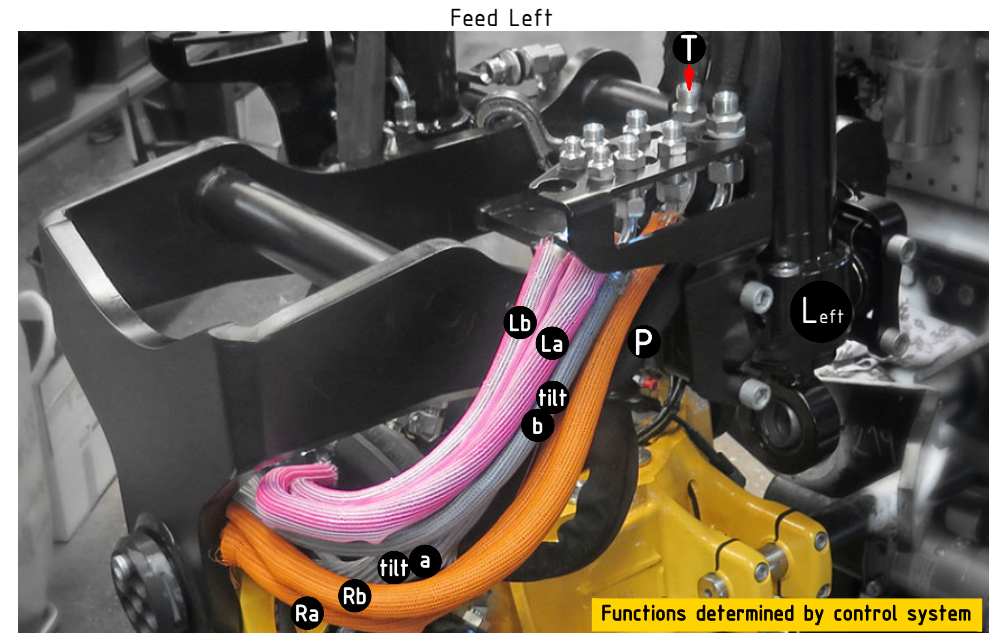
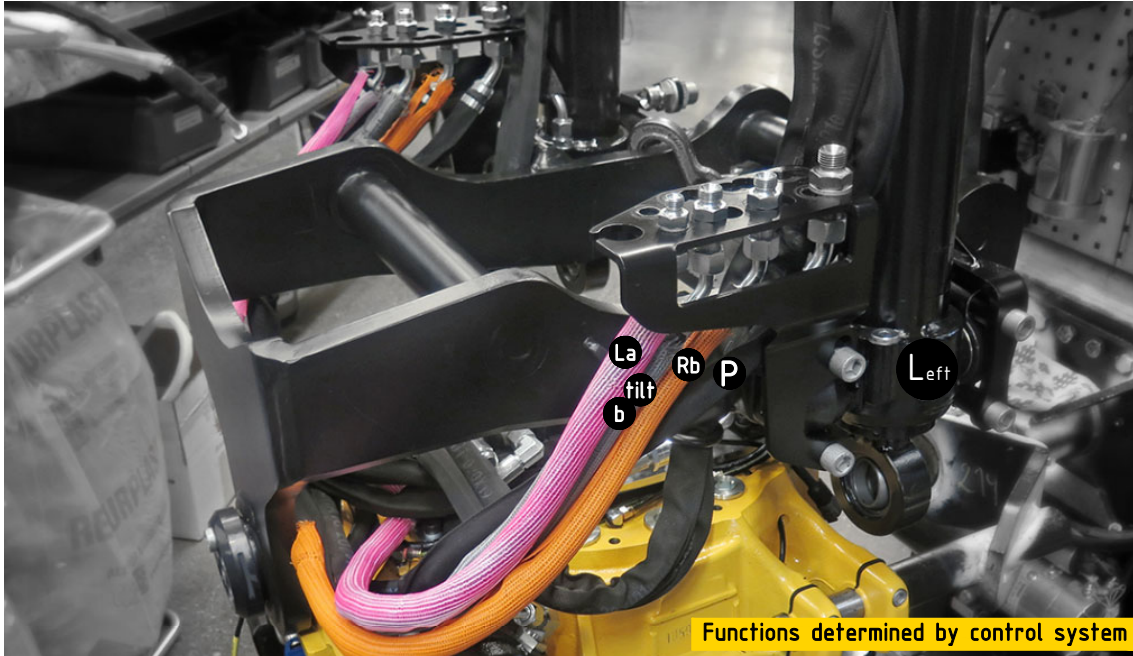
Feed Right



POS in order of assembly

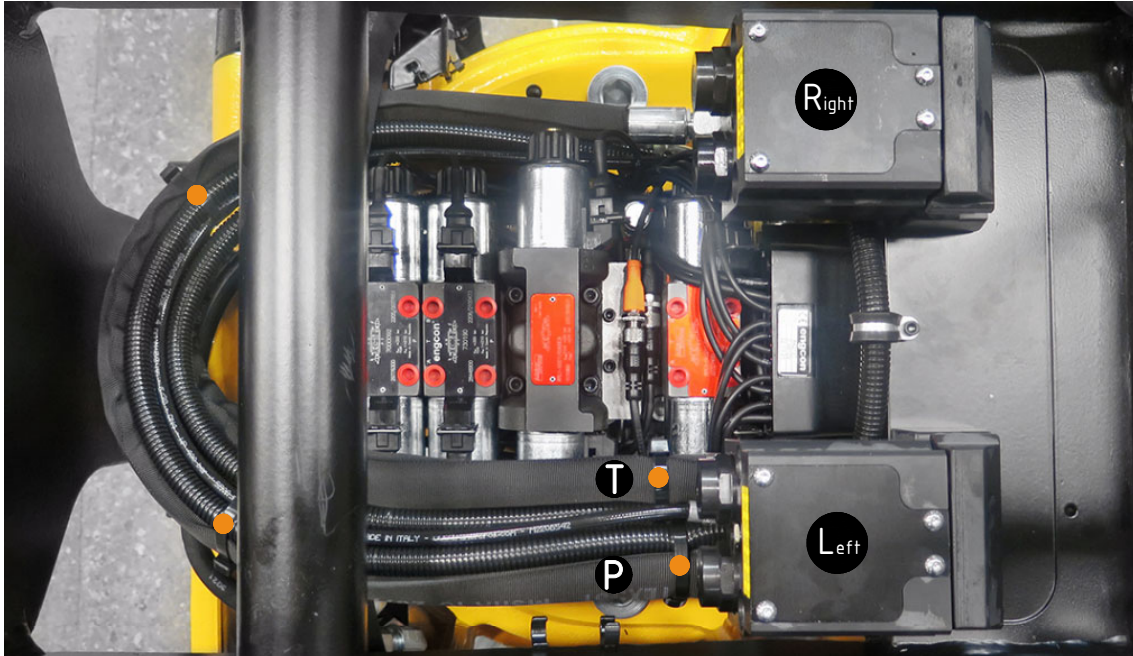
FEED
1/2" (option)

POS	DESCRIPTION	PART	QTY	COMMENTS
16	For Functions & Feed Hoses			See "Control system"



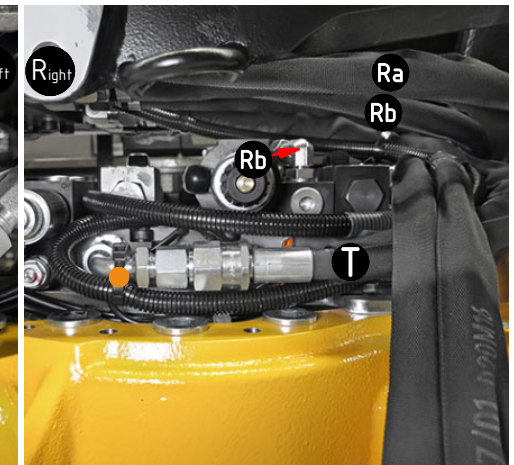
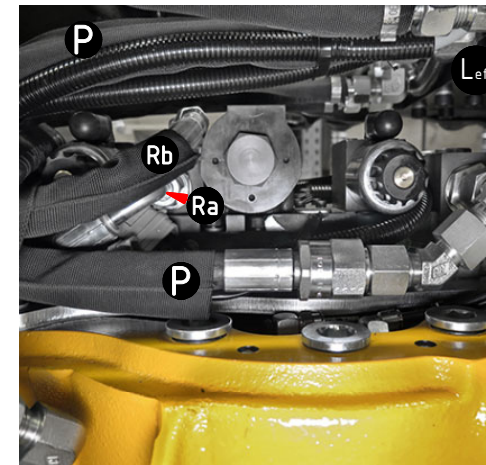
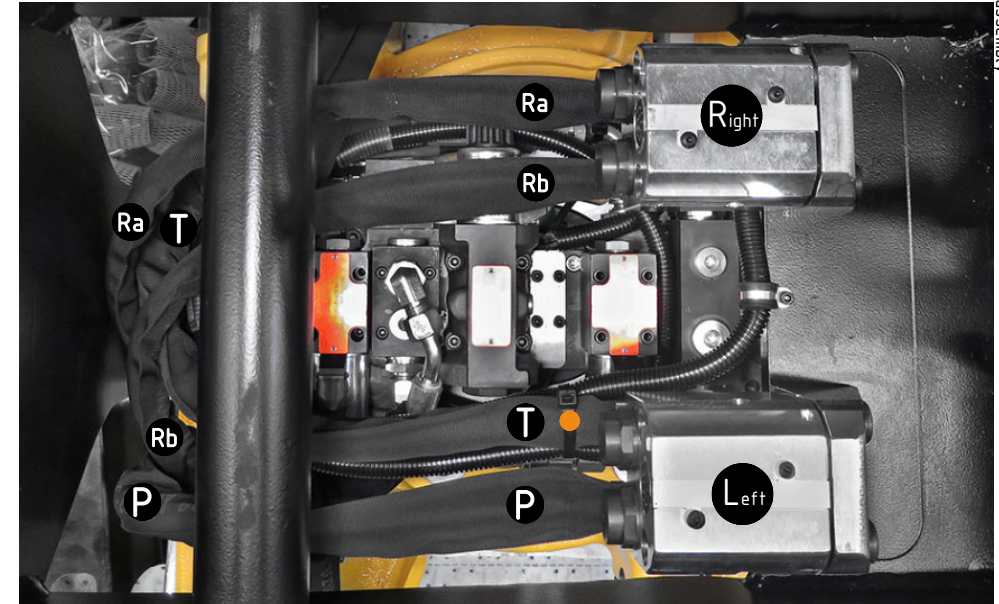
FEED

ss10 (DC2/SVAB):



POS	DESCRIPTION	PART	QTY	COMMENTS
15	For Feed Hoses			See "Control system"
●	Use cable ties			

ss9 EC-Oil:

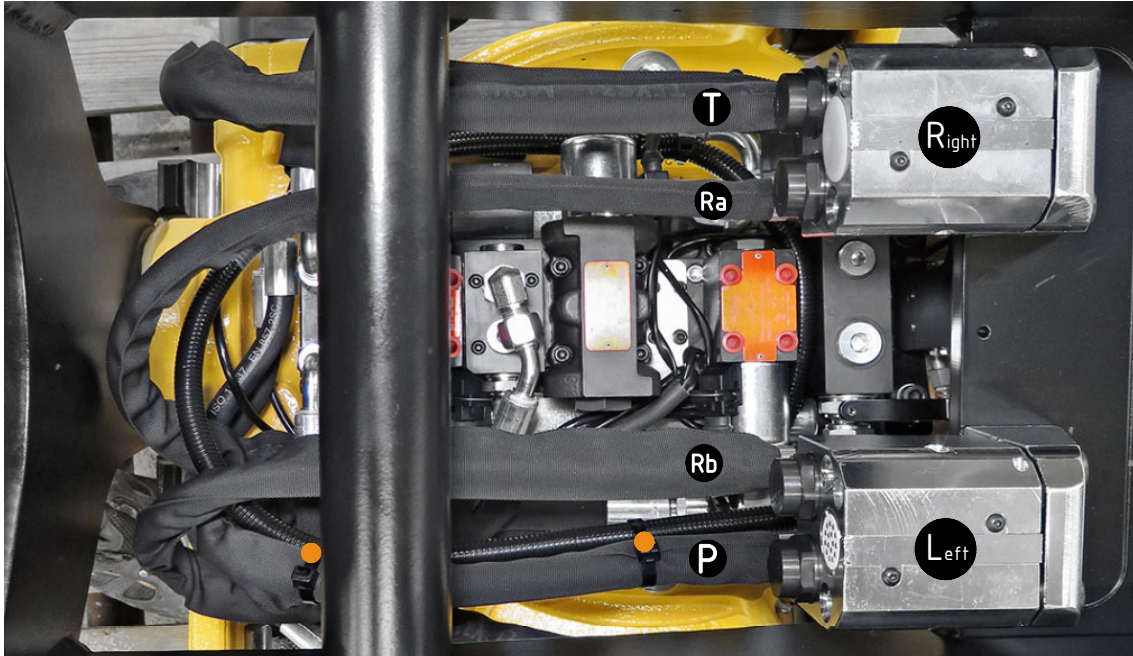


POS in order of assembly

FEED

ss9 EC-Oil 2Bl.Feed:

POS	DESCRIPTION	PART	QTY	COMMENTS
15	For Feed Hoses			See "Control system"
●	Use cable ties			



POS in order of assembly