

COVERSHEET

Planned document changes:

Briefly:

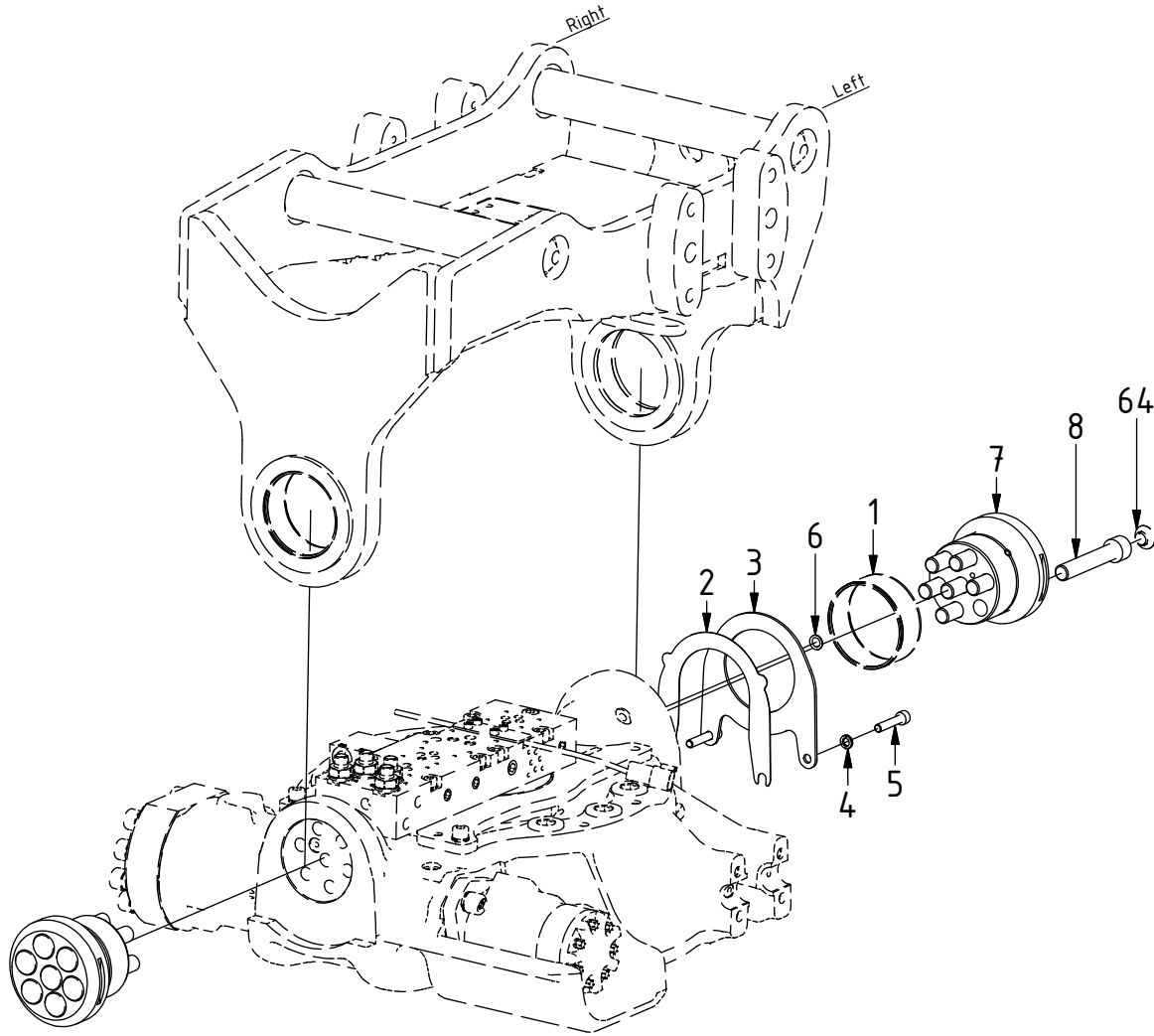
Change & add photos.

Document changes:

Date:	Change:	Rev. after change:
2019-06-20	Lännen config. updated with ss9SQSG.	D
2019-02-22	Lännen config. updated with ss5. Reference to FEED 1/2" added.	C
2019-01-14	Reference to Top part Hydrema, Huddig & Lännen added.	B
2018-12-19	Spare parts page added.	A
2018-10-23	New instruction.	-

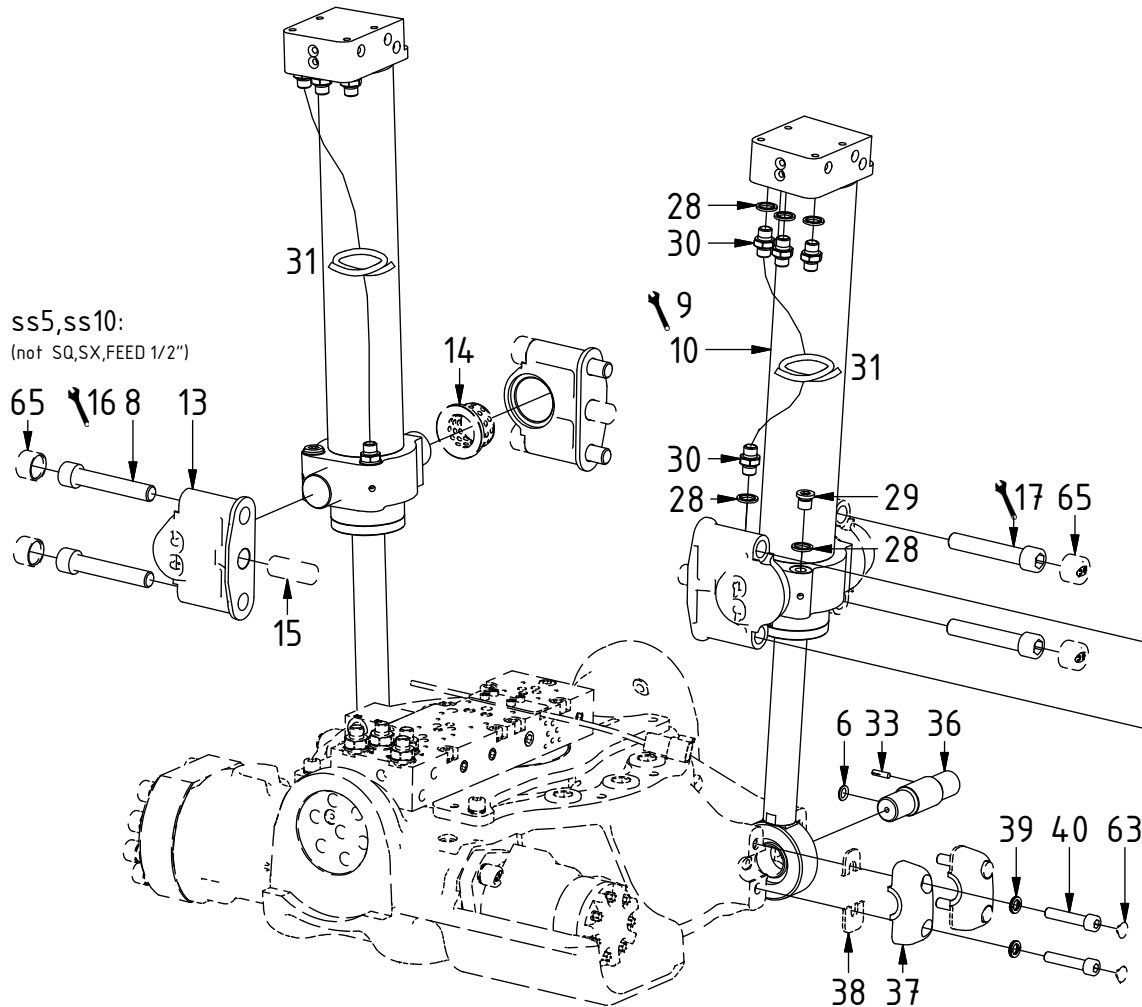
EC214 - Std Top part components

POS	DESCRIPTION	PART	QTY	COMMENTS
1	Bushing 85/90x35	630321	2	(Included in Top part)
2	Shims tilt axle	1016420	4	Use if required
3	Tilt axial washer	1016417	1	
4	Washer NL 8mm	611040	10	
5	MC6S M8x40 12.9	610437	2	
6	O-ring 9,92x2,62	710968	4	QTY: 8 for option Wide
7	Tilt axle EC214, EC219	1016416	2	
8	MC6S M16x90 12.9	610530	18	QTY depends on config. (14-26) Torque: 333Nm
64	Screw Cover M16	1004801	14	Part of make up



EC214 - Std Top part components

Standard

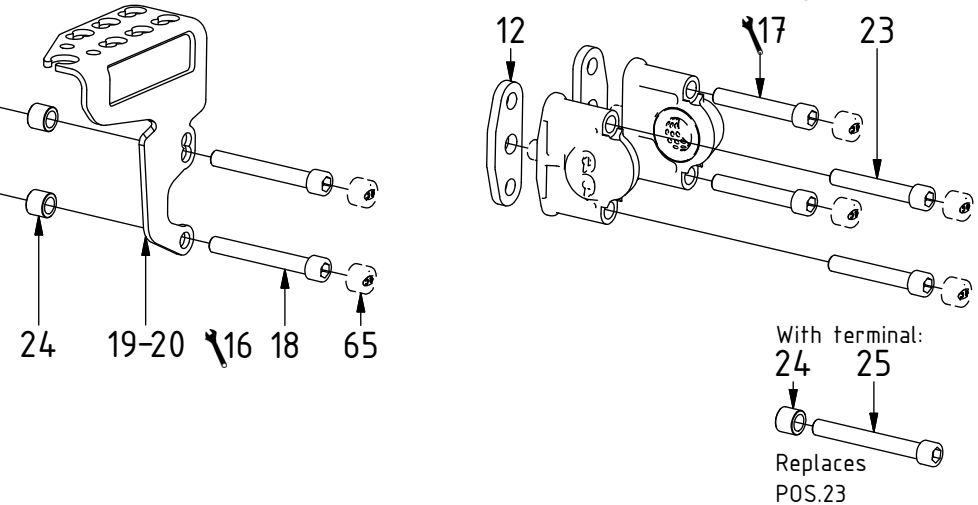


ss5,ss10:
(not SQ,SX,FEED 1/2")

POS	DESCRIPTION	PART	QTY	COMMENTS
6	O-ring 9,92x2,62	710968	4	QTY: 8 for option Wide
8	MC6S M16x90 12.9	610530	18	QTY depends on config. (14-26) Torque: 333Nm
9	For EC214R: UNI			See separate instruction
10	Tilt cylinder EC214	1041414	2	See "Tilt cylinders"
12	Shim Yoke bracket	1007041	4	For option Shimmed Tilt cylinder
13	Yoke bracket	1023212	4	(POS.14-15 included)
14	Bushing 35/45/55/5x30	631003	4	
15	Cylindrical pin CPK ø20x50	650211	4	
16	For SMP2			See separate instruction
17	For fasteners			See "Top part"
18	MC6S M16x120 12.9	610534	4	Torque: 333Nm
19	Hose terminal 8-hoses Left V2	1047137	1	
20	Hose terminal 8-hoses Right V2	1047138	1	
23	MC6S M16x100 12.9	610532	4	Torque: 333Nm
24	Spacer 20mm	1023777	4	
25	MC6S M16x130 12.9	610535	4	Torque: 333Nm
28	Washer GBR04 1/4	710702	10	
29	Plug 153-04 (1/4")	711505	6	
30	Adapter 138-04-29 (1/4")	710135	8	
31	Hose Tilt (cylinder)	743002	2	
33	Slotted pin RPE 5x20	640413	2	QTY: 4 for option Wide
36	Cylinder axle	1016458	2	
37	Clamping half complete	1022942	4	(POS.38 included)
38	Rubber spacer clamping half	1016465	4	
39	Washer NL 10mm	611041	8	
40	MC6S M10x50 12.9	610457	8	Torque: 79Nm
63	Screw Cover M10	1021468	8	Part of make up
65	Screw Cover M16	611302	8	Part of make up

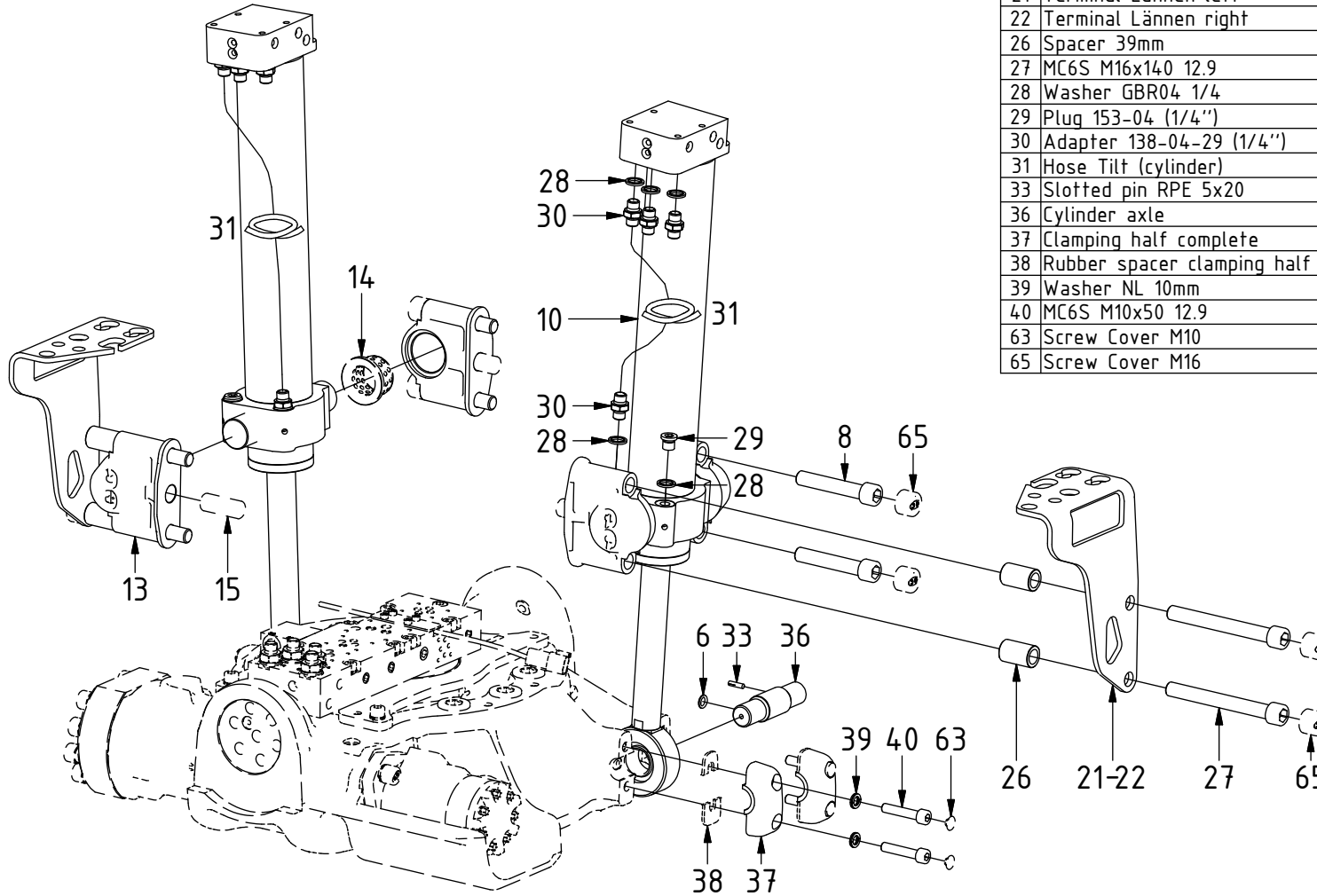
ss0,ss9,SQ,ST,SX,SG,FEED 1/2":

Shimmed tiltcyl:



EC214 - Std Top part components

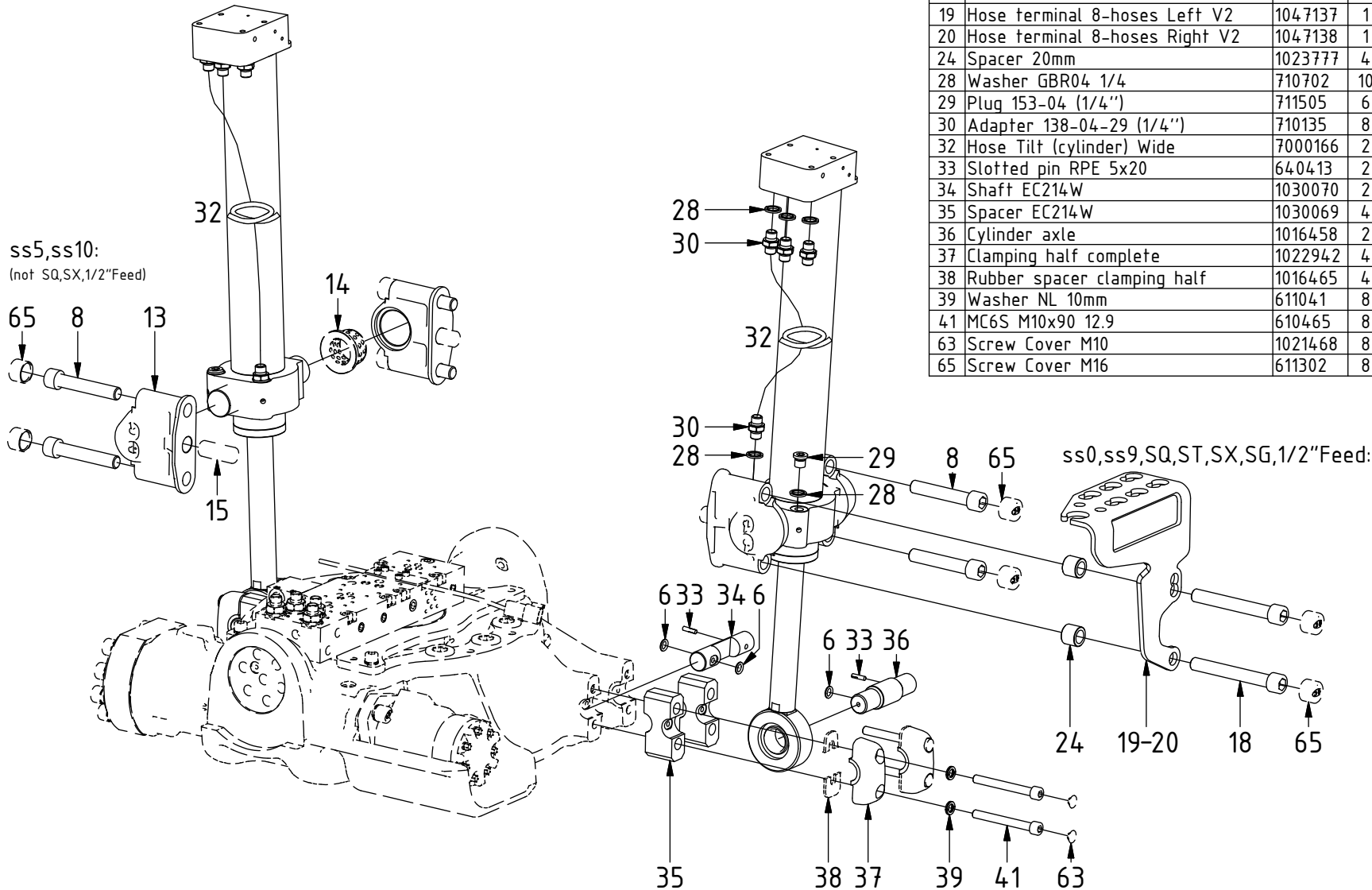
Lännen config.



POS	DESCRIPTION	PART	QTY	COMMENTS
6	O-ring 9,92x2,62	710968	4	QTY: 8 for option Wide
8	MC6S M16x90 12.9	610530	18	QTY depends on config. (14-26) Torque: 333Nm
10	Tilt cylinder EC214	1041414	2	See "Tilt cylinders"
13	Yoke bracket	1023212	4	(POS.14-15 included)
14	Bushing 35/45/55/5x30	631003	4	
15	Cylindrical pin CPK ø20x50	650211	4	
21	Terminal Lännen left	1045618	1	
22	Terminal Lännen right	1045619	1	
26	Spacer 39mm	1005911	8	
27	MC6S M16x140 12.9	610576	8	Torque: 333Nm
28	Washer GBR04 1/4	710702	10	
29	Plug 153-04 (1/4")	711505	6	
30	Adapter 138-04-29 (1/4")	710135	8	
31	Hose Tilt (cylinder)	743002	2	
33	Slotted pin RPE 5x20	640413	2	QTY: 4 for option Wide
36	Cylinder axle	1016458	2	
37	Clamping half complete	1022942	4	(POS.38 included)
38	Rubber spacer clamping half	1016465	4	
39	Washer NL 10mm	611041	8	
40	MC6S M10x50 12.9	610457	8	Torque: 79Nm
63	Screw Cover M10	1021468	8	Part of make up
65	Screw Cover M16	611302	8	Part of make up

EC214 - Std Top part components

Wide

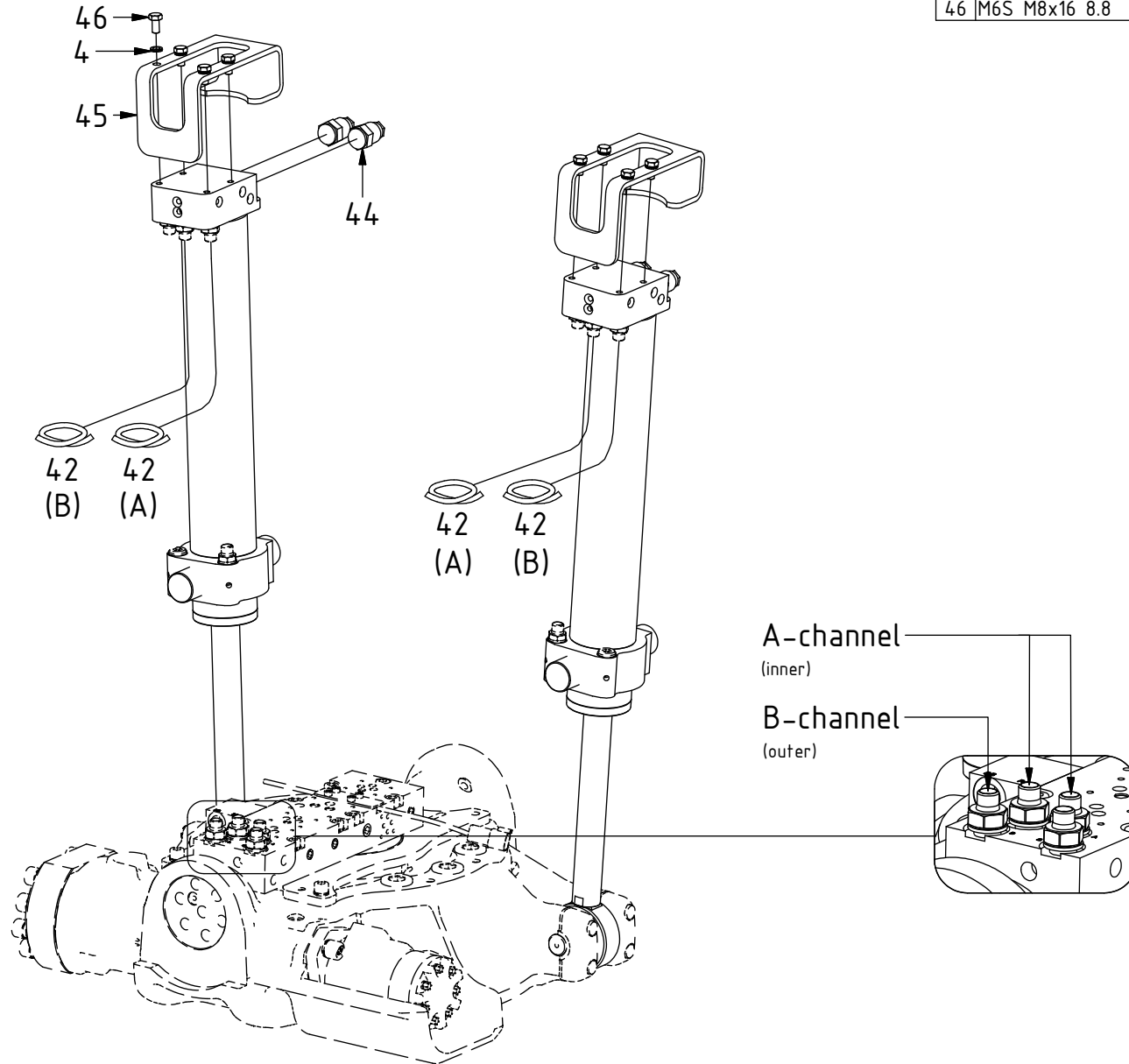


POS	DESCRIPTION	PART	QTY	COMMENTS
6	O-ring 9,92x2,62	710968	4	QTY: 8 for option Wide
8	MC6S M16x90 12.9	610530	18	QTY depends on config. (14-26) Torque: 333Nm
13	Yoke bracket	1023212	4	(POS.14-15 included)
14	Bushing 35/45/55/5x30	631003	4	
15	Cylindrical pin CPK ø20x50	650211	4	
18	MC6S M16x120 12.9	610534	4	Torque: 333Nm
19	Hose terminal 8-hoses Left V2	1047137	1	
20	Hose terminal 8-hoses Right V2	1047138	1	
24	Spacer 20mm	1023777	4	
28	Washer GBR04 1/4	710702	10	
29	Plug 153-04 (1/4")	711505	6	
30	Adapter 138-04-29 (1/4")	710135	8	
32	Hose Tilt (cylinder) Wide	7000166	2	
33	Slotted pin RPE 5x20	640413	2	QTY: 4 for option Wide
34	Shaft EC214W	1030070	2	
35	Spacer EC214W	1030069	4	
36	Cylinder axle	1016458	2	
37	Clamping half complete	1022942	4	(POS.38 included)
38	Rubber spacer clamping half	1016465	4	
39	Washer NL 10mm	611041	8	
41	MC6S M10x90 12.9	610465	8	Torque: 79Nm
63	Screw Cover M10	1021468	8	Part of make up
65	Screw Cover M16	611302	8	Part of make up

EC214 - Std Top part components

TILT:
Standard, Lännen config.

POS	DESCRIPTION	PART	QTY	COMMENTS
4	Washer NL 8mm	611040	10	
42	Hose Tilt long	743001	4	
44	Overcentre valve 10:1	730269	4	Torque: 45Nm
45	Hose protection Tiltcyl.	1003774	2	
46	M6S M8x16 8.8	610122	8	



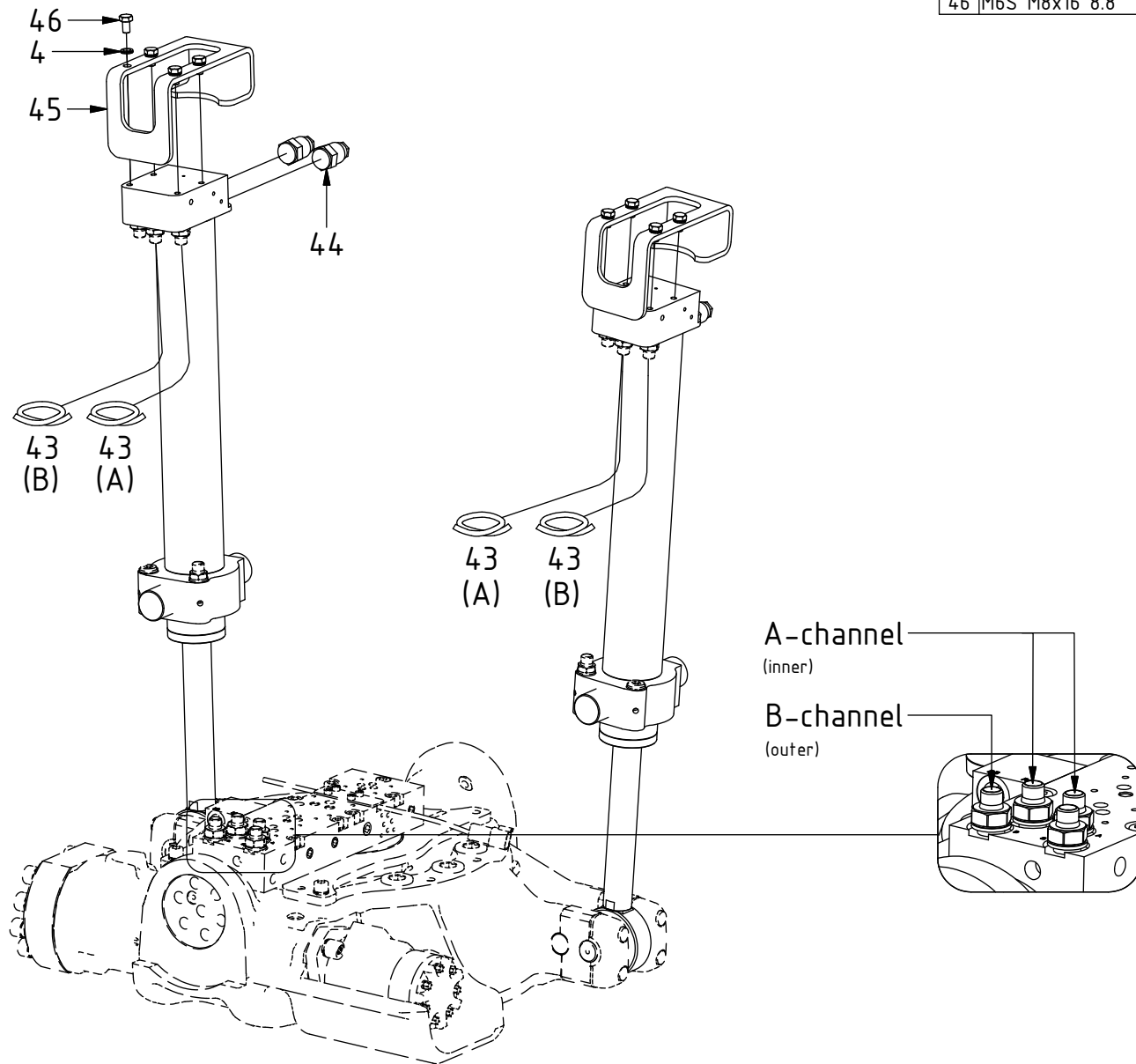
EC214 - Std Top part components

Drawing No: 1039701 /D

TILT:
Wide

POS	DESCRIPTION	PART	QTY	COMMENTS
4	Washer NL 8mm	611040	10	
43	Hose Tilt long Wide	7000167	4	
44	Overcentre valve 10:1	730269	4	Torque: 45Nm
45	Hose protection Tiltcyl.	1003774	2	
46	M6S M8x16 8.8	610122	8	

POS in order of assembly



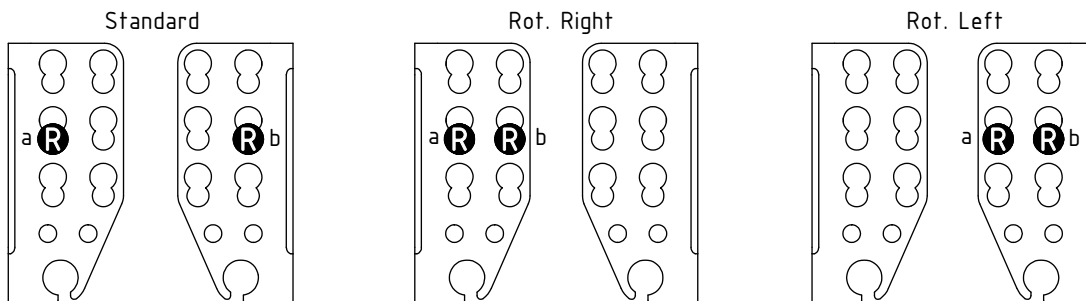
EC214 - Std Top part components

Drawing No: 1039701 /D

- R** = 54
- L** = 58
- filr** = 54
- E** = 50
- G** = 54

FEED:
3/4" (Std)

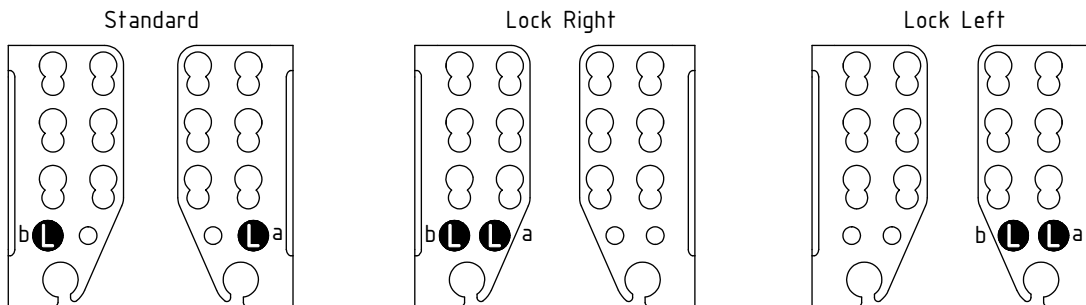
Rotation



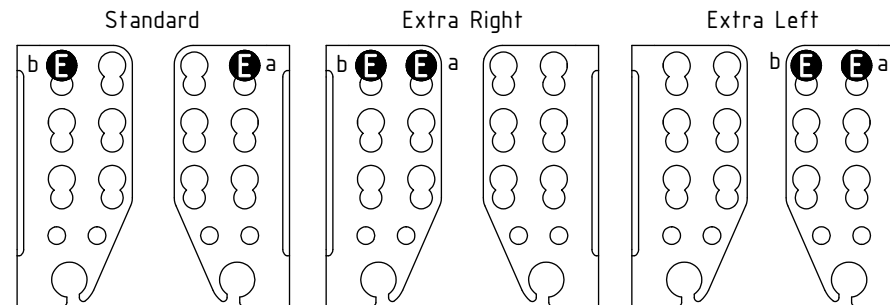
POS	DESCRIPTION	PART	QTY	COMMENTS
47	For Lännen config.			See p.9 for instruction
48	For Hydrema, Huddig, Lännen			See "Top part"
49	For FEED 1/2"			See "Top part"
50	Use washer, adapter, nut according to POS.51, 52, 53			QTY depends on terminal holes (2-4)
51	Washer NL 20mm	611098	2	
52	Adapter 1260-08-08 (1/2")	710244	2	
53	Check nut 1270-08 (1/2")	710254	2	
54	Use washer, adapter, nut according to POS.55, 56, 57			QTY depends on terminal holes (2-6)
55	Washer NL 16mm	611044	2	
56	Adapter 1260-06-32 (3/8")	710242	2	
57	Check nut 1270-06 (3/8")	710252	2	
58	Use washer, adapter, nut according to POS.59, 60, 61			
59	Washer NL 1/2"	611096	2	
60	Adapter 1260-04-04 (1/4")	710240	2	
61	Check nut 1270-04 (1/4")	710250	2	
Attach feed hoses from control system				(a & b represents channels on feed block)

POS in order of assembly

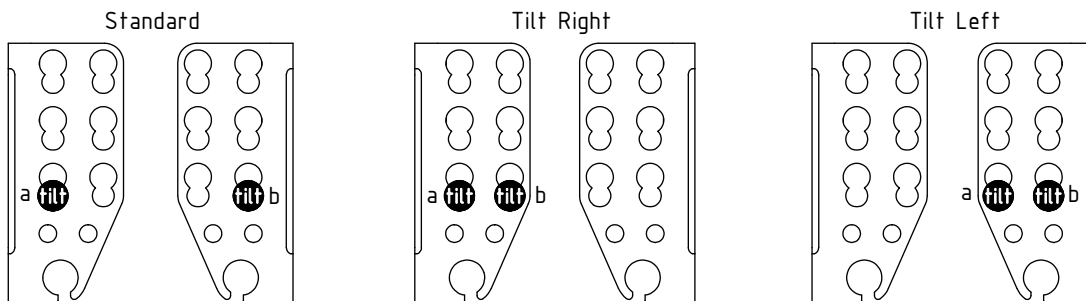
Lock (SQ)



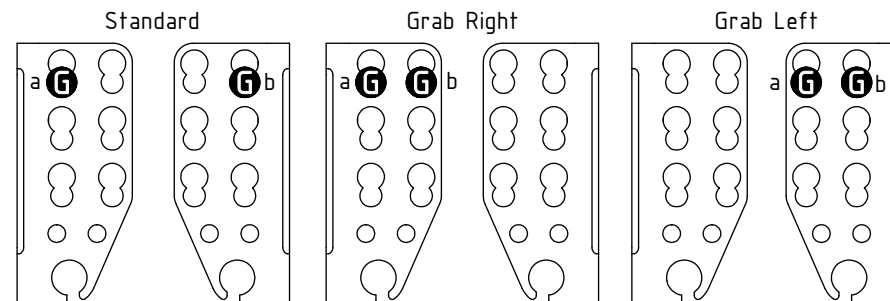
Extra (SX)



Tilt (ST)



Grab (SG)



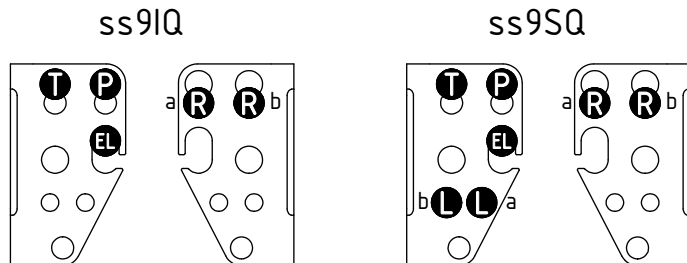
EC214 - Std Top part components

Drawing No: 1039701 /D

- P** = 50
- T** = 50
- R** = 54
- L** = 58
- E** = 50
- filt** = 54
- G** = 54

FEED:

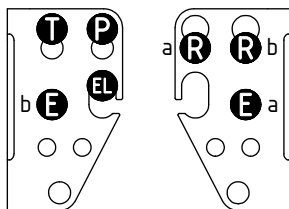
Lännen config.
(NOT compatible with ss10)



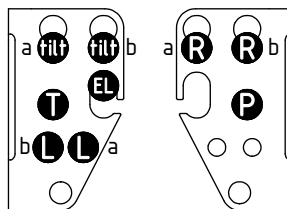
POS	DESCRIPTION	PART	QTY	COMMENTS
50	Use washer, adapter, nut according to POS.51, 52, 53			QTY depends on terminal holes (2-4)
51	Washer NL 20mm	611098	2	
52	Adapter 1260-08-08 (1/2")	710244	2	
53	Check nut 1270-08 (1/2")	710254	2	
54	Use washer, adapter, nut according to POS.55, 56, 57			QTY depends on terminal holes (2-6)
55	Washer NL 16mm	611044	2	
56	Adapter 1260-06-32 (3/8")	710242	2	
57	Check nut 1270-06 (3/8")	710252	2	
58	Use washer, adapter, nut according to POS.59, 60, 61			
59	Washer NL 1/2"	611096	2	
60	Adapter 1260-04-04 (1/4")	710240	2	
61	Check nut 1270-04 (1/4")	710250	2	
				(a & b represents channels on feed block)

POS in order of assembly

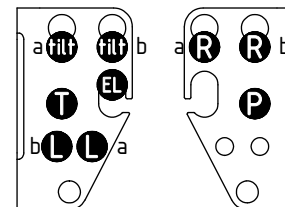
ss9IQSX



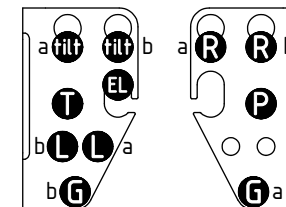
ss9SQST



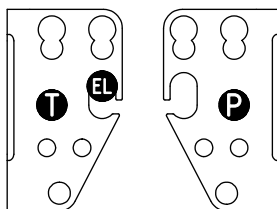
ss0



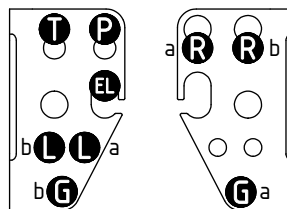
ss0 Grab



ss5



ss9SQSG



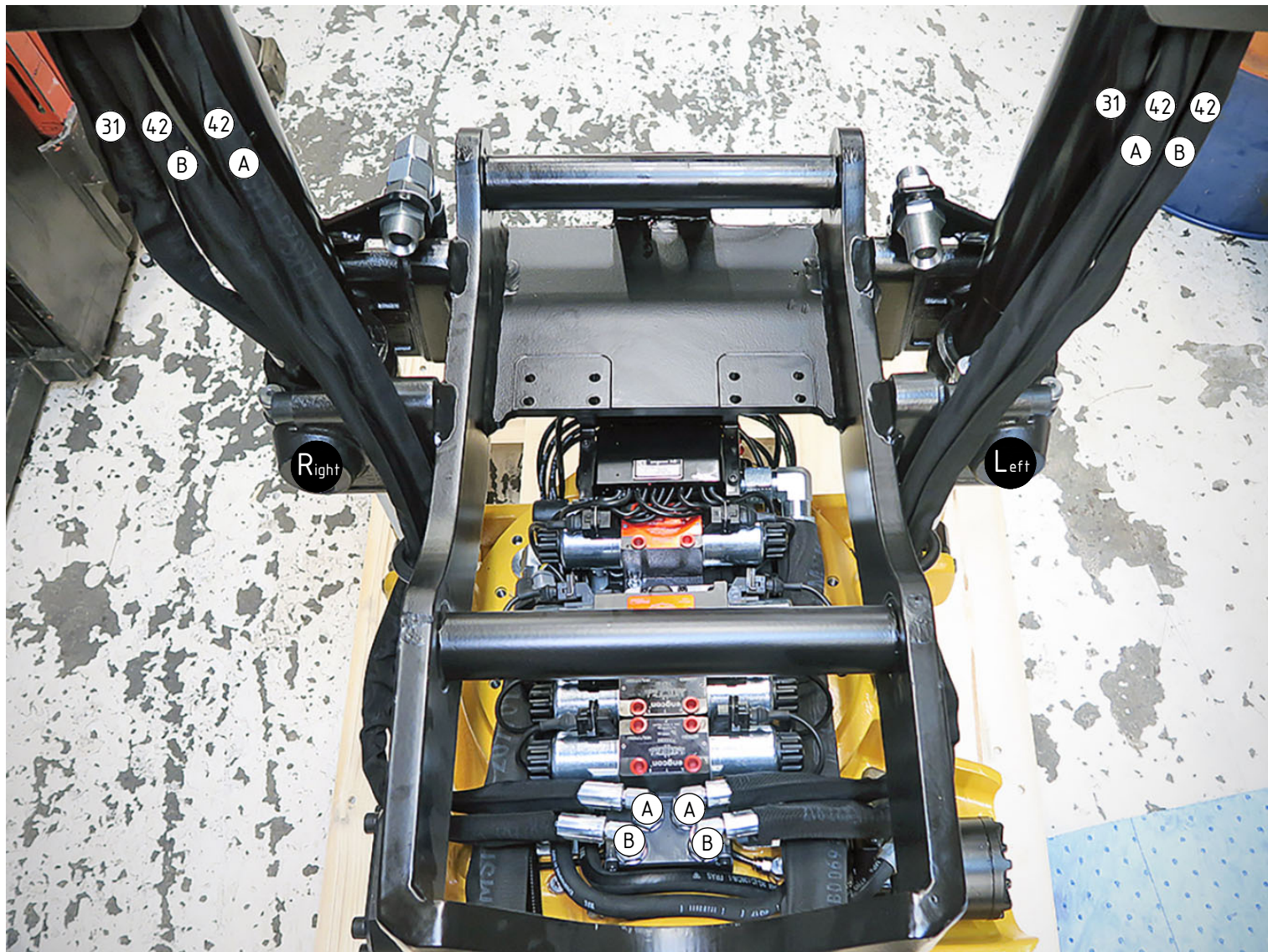
EC214 - Std Top part components

Drawing No: 1039701 /D

POS	DESCRIPTION	PART	QTY	COMMENTS
31	Hose Tilt (cylinder)	743002	2	
42	Hose Tilt long	743001	4	

TILT:

Standard, Lännen config.



POS in order of assembly

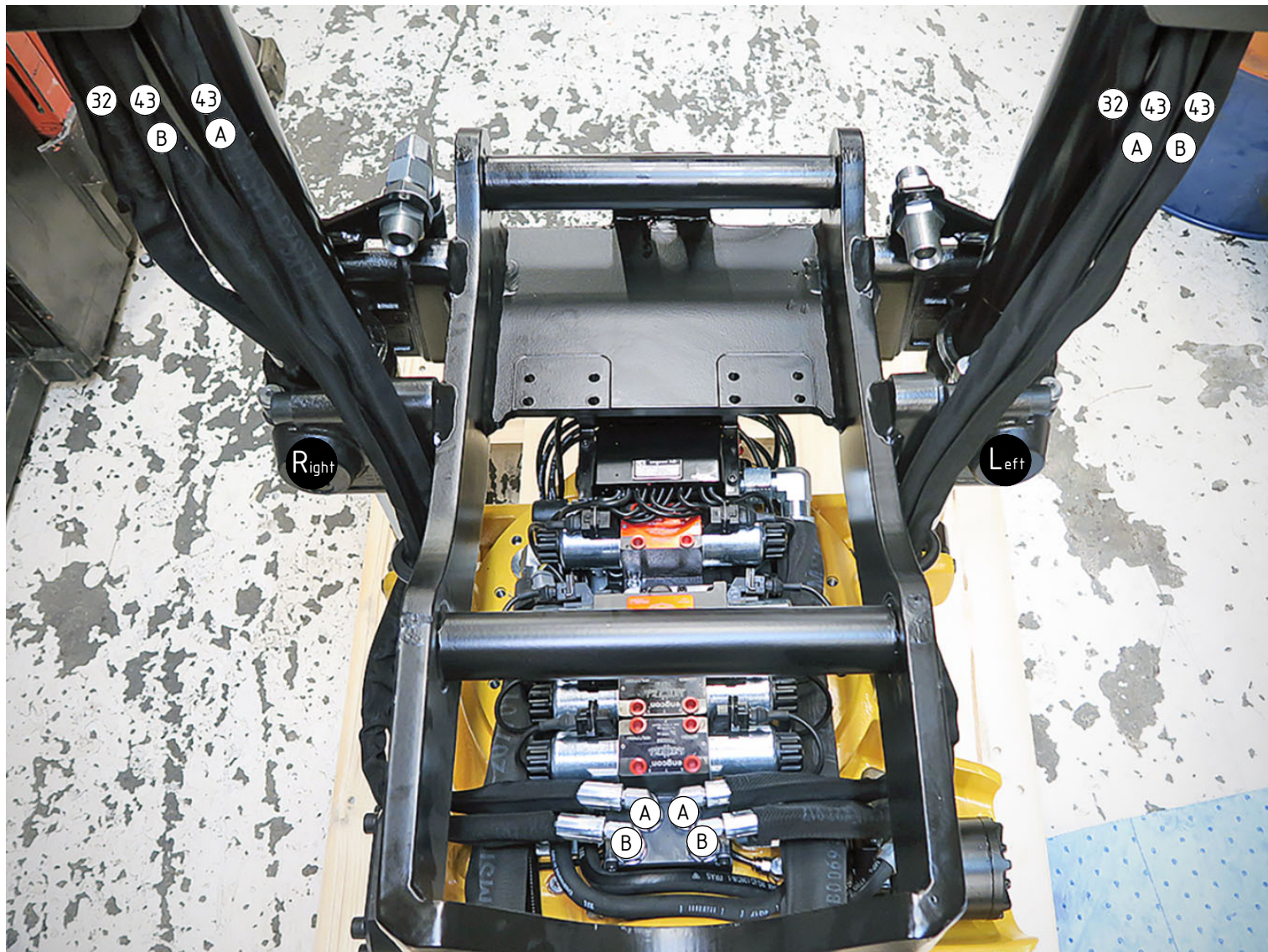
EC214 - Std Top part components

Drawing No: 1039701 /D

POS	DESCRIPTION	PART	QTY	COMMENTS
32	Hose Tilt (cylinder) Wide	7000166	2	
43	Hose Tilt long Wide	7000167	4	

TILT:
Wide

POS in order of assembly



EC214 - Std Top part components

FEED:
3/4" (Std)

POS	DESCRIPTION	PART	QTY	COMMENTS
48	For Hydrema, Huddig, Lännen			See "Top part"
49	For FEED 1/2"			See "Top part"
	Attach feed hoses from control system			(a & b represents channels on feed block)

POS in order of assembly

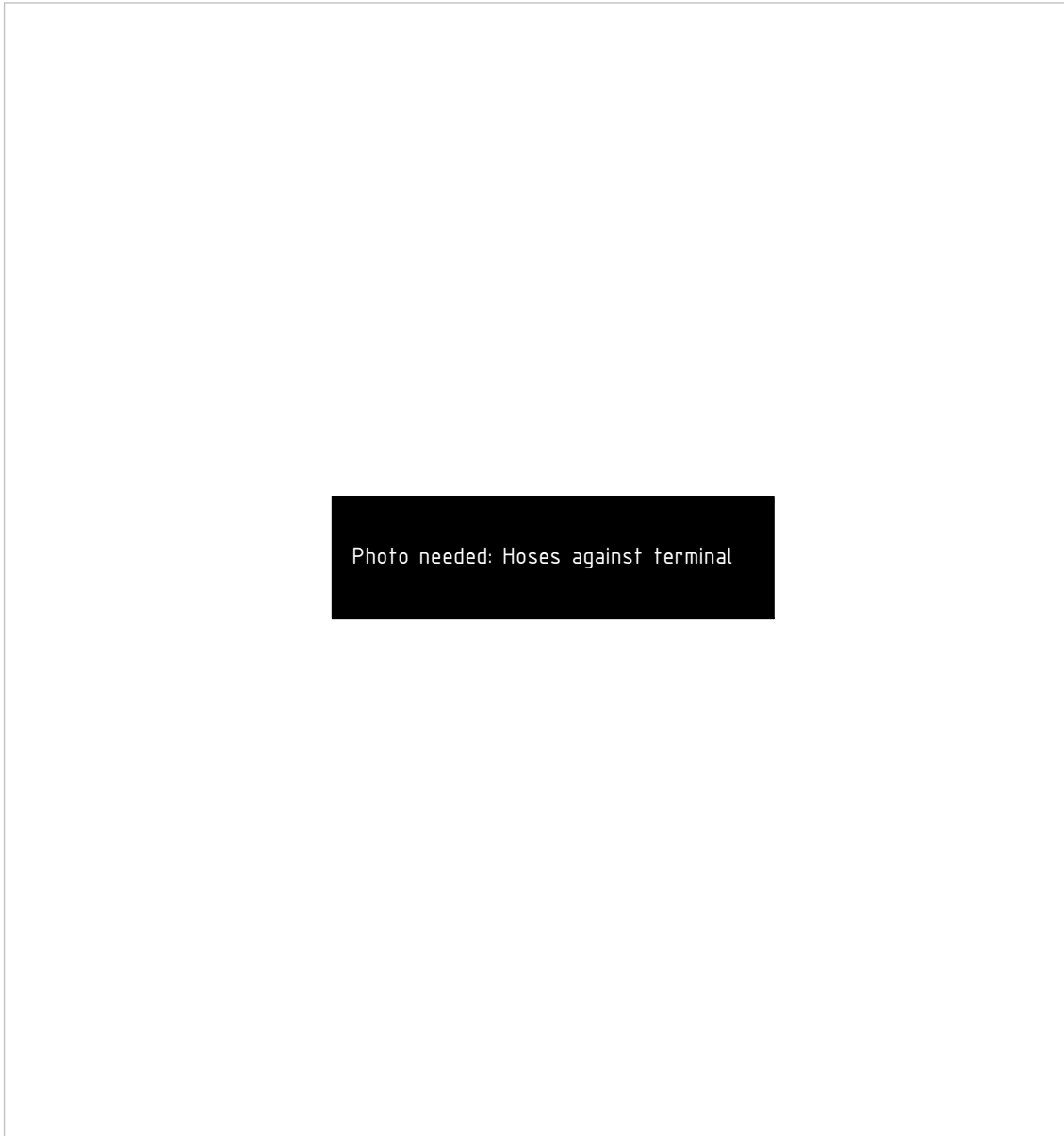


Photo needed: Hoses against terminal

Feed Left:

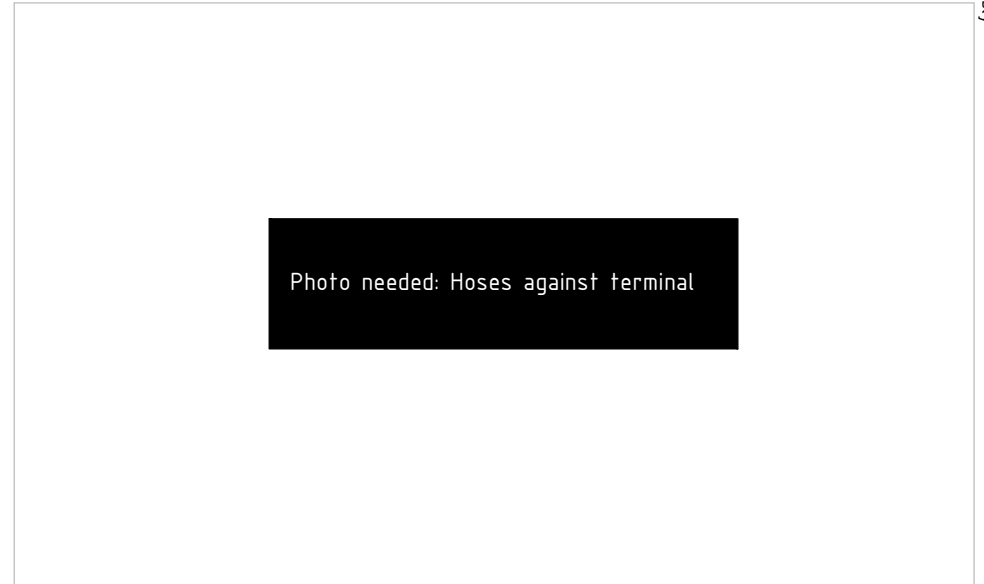


Photo needed: Hoses against terminal

Feed Right:

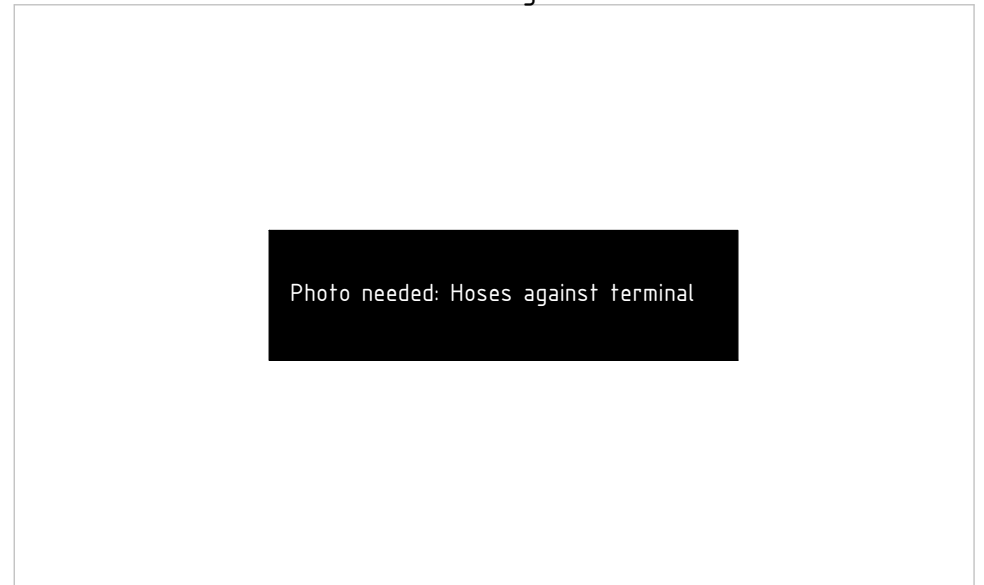


Photo needed: Hoses against terminal

EC214 - Std Top part components

FEED:

Lännen config.
(NOT compatible with ss10)

POS	DESCRIPTION	PART	QTY	COMMENTS
	Attach feed hoses from control system			(a & b represents channels on feed block)

POS in order of assembly

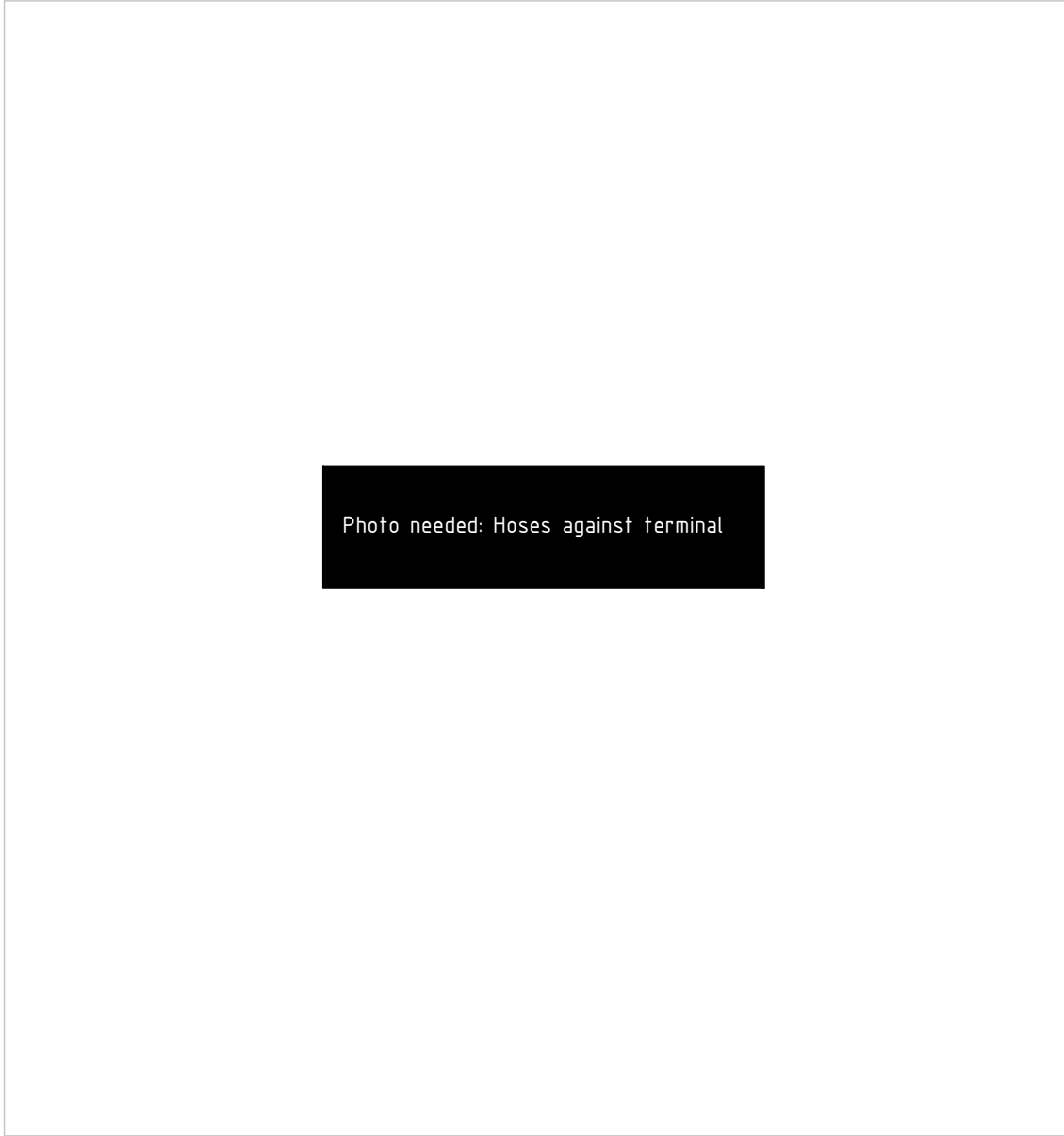
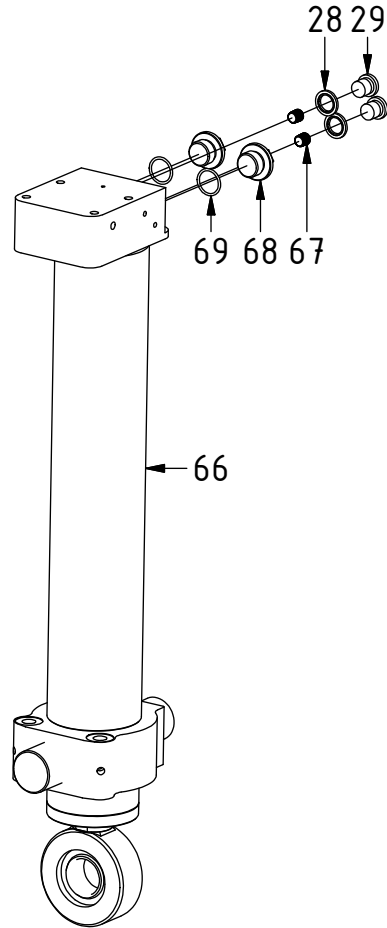


Photo needed: Hoses against terminal

EC214 - Std Top part components

Related spare parts:

Used until 2017-05



POS	DESCRIPTION	PART	QTY	COMMENTS
10	Tilt cylinder EC214	1041414	2	See "Tilt cylinders"
28	Washer GBR04 1/4	710702	10	
29	Plug 153-04 (1/4")	711505	6	
66	Tilt cylinder EC214	1024186	2	Replaced by POS.10 from 2017-05
67	Plug 1/8" BSPT	711523	4	Only for ss0, ss3 R-X, ss5, ss10
68	Plug M20x1,5	1022297	4	Only for ss0, ss3 R-X, ss5, ss10 POS.69 included
69	O-ring 18x2	710955	4	

POS in order of assembly