

COVERSHEET

Planned document changes:

Briefly:

POS.23: add Loxeal 83-52.

POS.26 glue instructions:

Loxeal 83-52 for black steering,

Loxeal 53-11 for stainless steering.

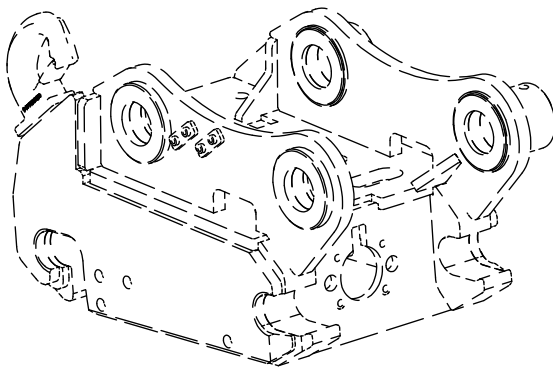
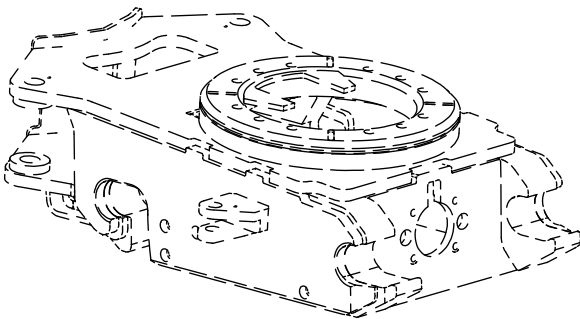
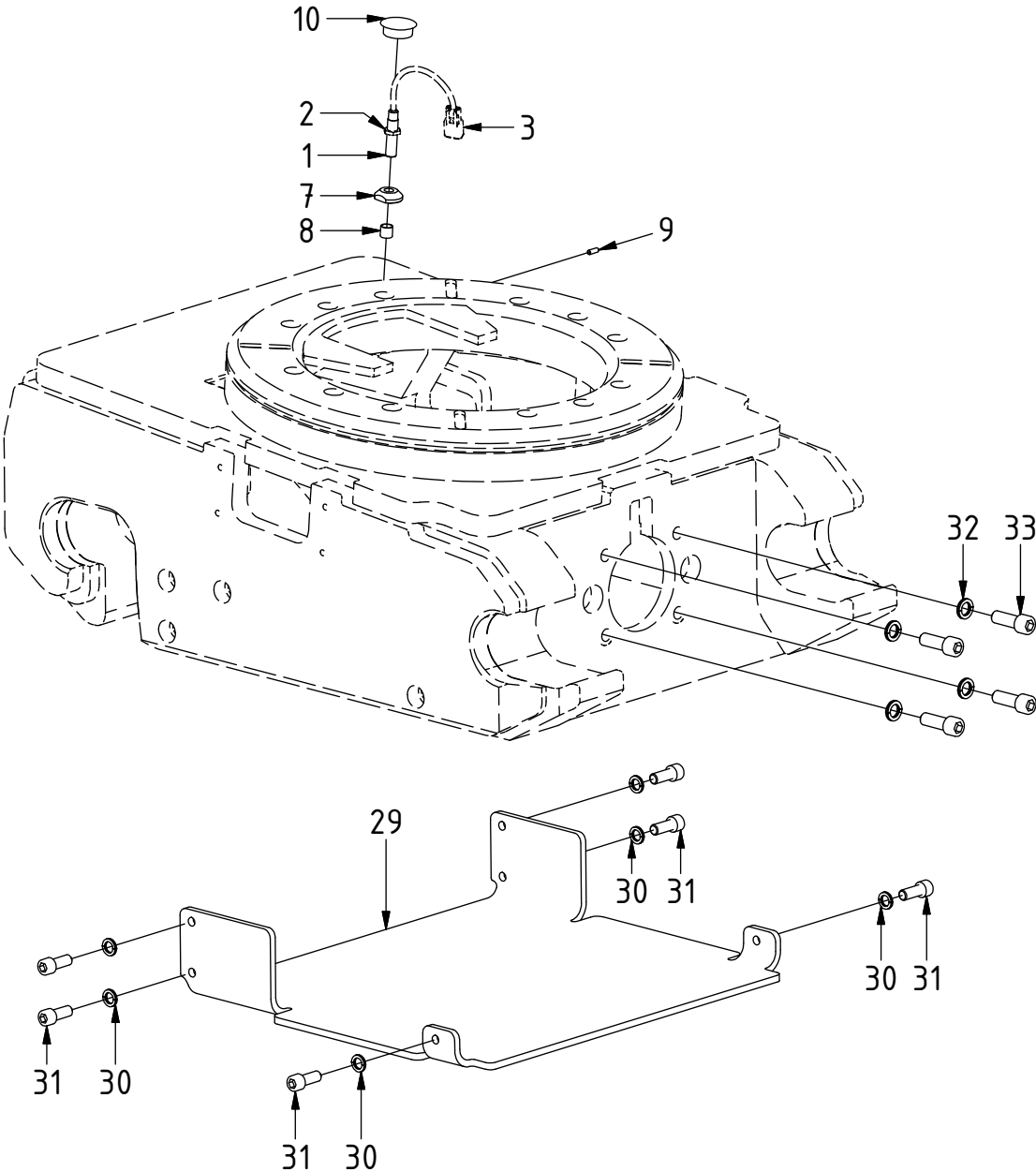
Document changes:

| Date: | Change: | Rev. after change: |
|------------|--|-----------------------|
| 2021-03-04 | Plugs excluded from cylinder V2 QSC. | F |
| 2020-04-01 | Springs x2 in complete cyl. replaced by long spring. | E |
| 2019-01-16 | Spare parts updated. | D |
| 2018-11-30 | Lock cylinder replaced. Spare parts pages added. | C |
| 2018-02-05 | Screw for indicator pin updated. Coversheet added. | B |

QS80 - Std components

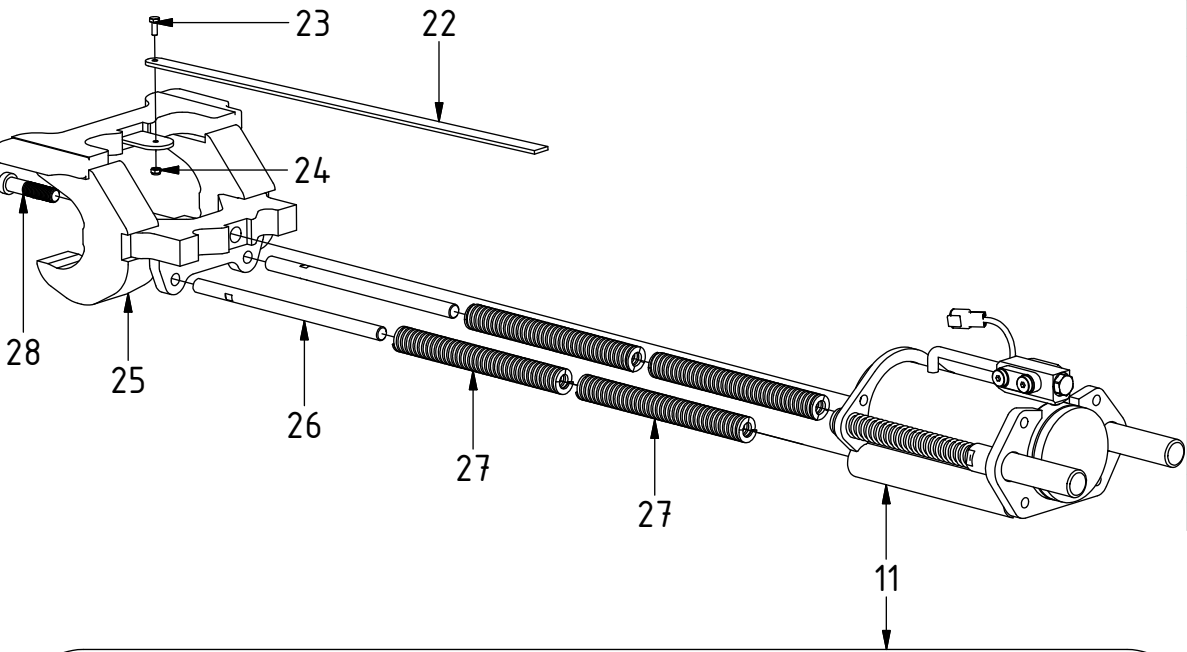
EC233, EC30, QS80

| POS | DESCRIPTION | PART | QTY | COMMENTS |
|-----|----------------------------------|---------|-----|--|
| 1 | Inductive sensor QSC (hook) | 1040358 | 2 | Mount just below surface edge (POS.2-3 included) |
| 2 | Hex nut | | | (Included with sensor) |
| 3 | Connector Deutsch DTM04-3P | 8000064 | 2 | |
| 7 | Position nut, inductive sensor | 1029432 | 1 | |
| 8 | Protection lid, inductive sensor | 8000056 | 1 | |
| 9 | Set Screw M8x16 | 610808 | 1 | |
| 10 | Cover plug QS/ECO | 8000068 | 1 | |
| 29 | Protection lid QS80 | 1039790 | 1 | No cover plate for EC-Oil |
| 30 | Washer NL 12mm | 611042 | 6 | |
| 31 | MC6S M12x30 12.9 ZFSHL | 6000142 | 6 | |
| 32 | Washer NL 14mm | 611043 | 4 | |
| 33 | MC6S M14x40 12.9 ZFSHL | 6000200 | 4 | |

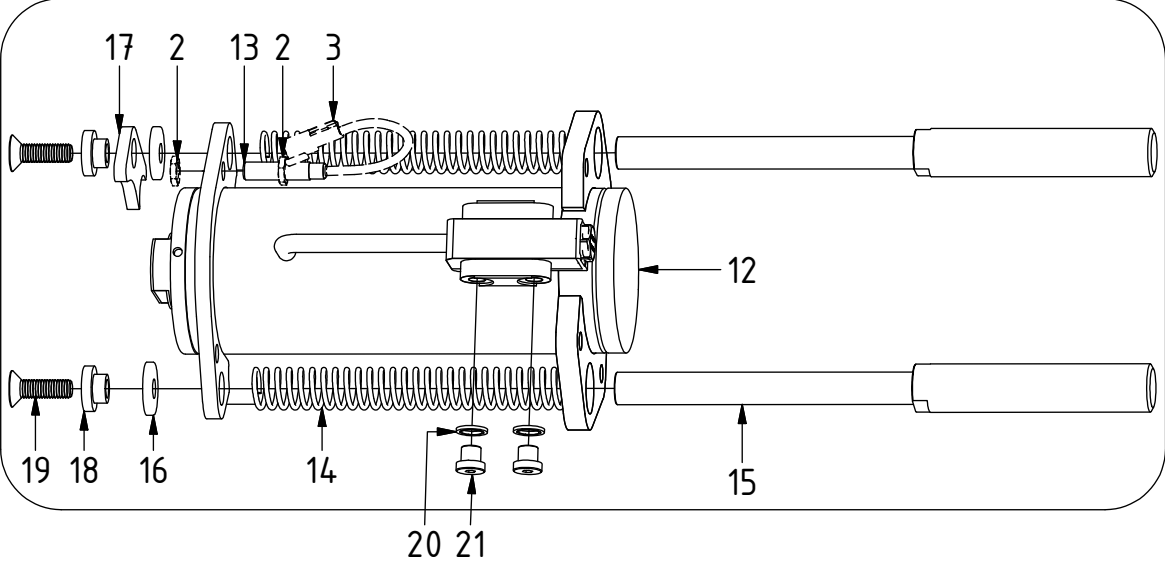


QS80 - Std components

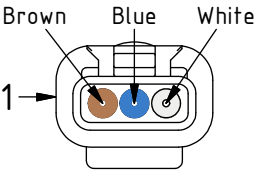
EC233, EC30, QS80



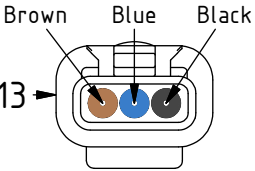
| POS | DESCRIPTION | PART | QTY | COMMENTS |
|-----|----------------------------------|---------|-----|--|
| 1 | Inductive sensor QSC (hook) | 1040358 | 2 | Mount just below surface edge (POS.2-3 included) |
| 2 | Hex nut | | | (Included with sensor) |
| 3 | Connector Deutsch DTM04-3P | 8000064 | 2 | |
| 11 | Lock cylinder QS80 V2 Compl. QSC | 1049727 | 1 | (POS.12-19 included) |
| 12 | Lock cylinder QS80 V2 | 1048783 | 1 | See "Lock cylinders" |
| 13 | Inductive sensor QSC (cylinder) | 1040359 | 1 | Mount 1mm from Sensor plate (POS.2-3 included) |
| 14 | Spring 21,8x210 | 1049974 | 2 | |
| 15 | Ejector | 1034935 | 2 | |
| 16 | Washer 13x35x5 | 612016 | 2 | |
| 17 | Sensor plate | 1035535 | 1 | Assemble with slight play |
| 18 | Spacer M12 L15 | 1008243 | 2 | |
| 19 | Screw MF6S 12x40 | 610670 | 2 | Loctite 2700 |
| 20 | Washer GBR04 1/4 | 710702 | 2 | |
| 21 | Plug 1/4" | 711505 | 2 | |
| 22 | Indicator pin QS (610mm) | 1036201 | 1 | |
| 23 | Hex Head Screw 6x16 | 610109 | 1 | |
| 24 | Hex. Nut M6 Nylon Lock | 610921 | 1 | |
| 25 | Locking hook QS80 | 1034775 | 1 | |
| 26 | Steering | 1024695 | 2 | Loctite 6300 |
| 27 | Spring 32x254 | 1035022 | 4 | |
| 28 | Socket head screw MLC6S 16x70 | 610720 | 1 | Loctite 2700 |



Hook:



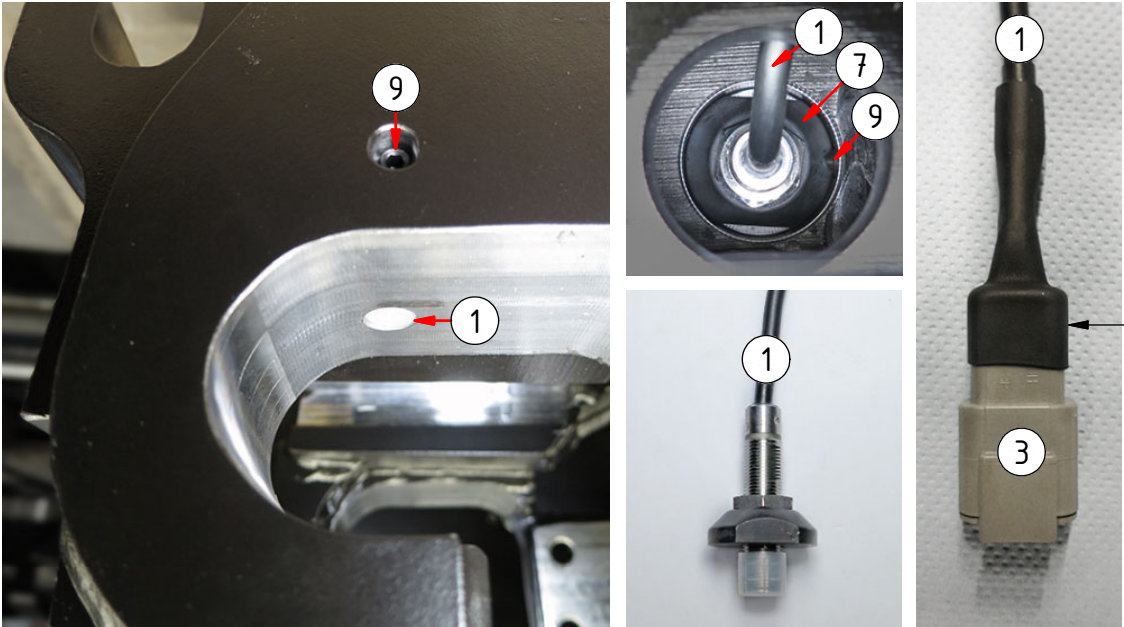
Cylinder:



QS80 - Std components

EC233, EC30, QS80

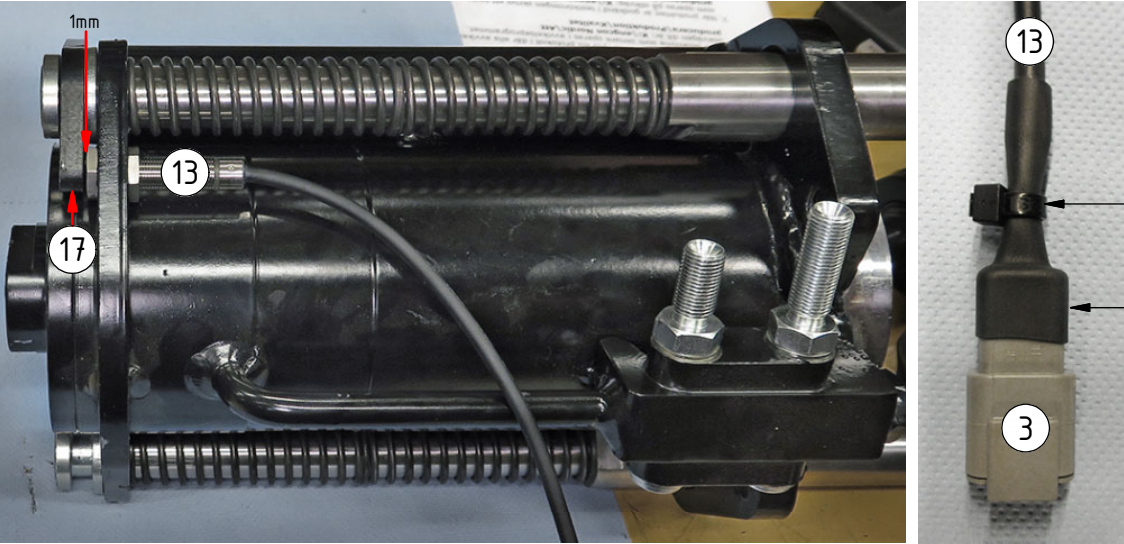
Hook:



| POS | DESCRIPTION | PART | QTY | COMMENTS |
|-----|---|---------|-----|--|
| 1 | Inductive sensor QSC (hook) | 1040358 | 2 | Mount just below surface edge (POS.2-3 included) |
| 3 | Connector Deutsch DTM04-3P | 8000064 | 2 | |
| 4 | Apply dielectric compound before inserting wedge. Peel cables 5mm | | | |
| 5 | Shrink tube on both connectors | | | |
| 6 | Cable tie on cylinder connector | | | |
| 7 | Position nut, inductive sensor | 1029432 | 1 | |
| 9 | Set Screw M8x16 | 610808 | 1 | |
| 13 | Inductive sensor QSC (cylinder) | 1040359 | 1 | Mount 1mm from Sensor plate (POS.2-3 included) |
| 17 | Sensor plate | 1035535 | 1 | Assemble with slight play |

POS in order of assembly

Cylinder:



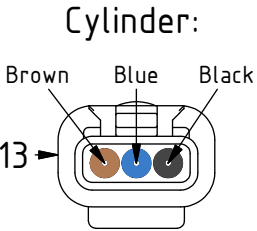
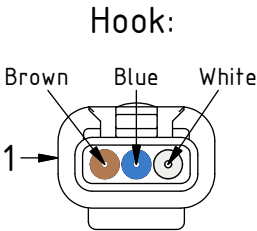
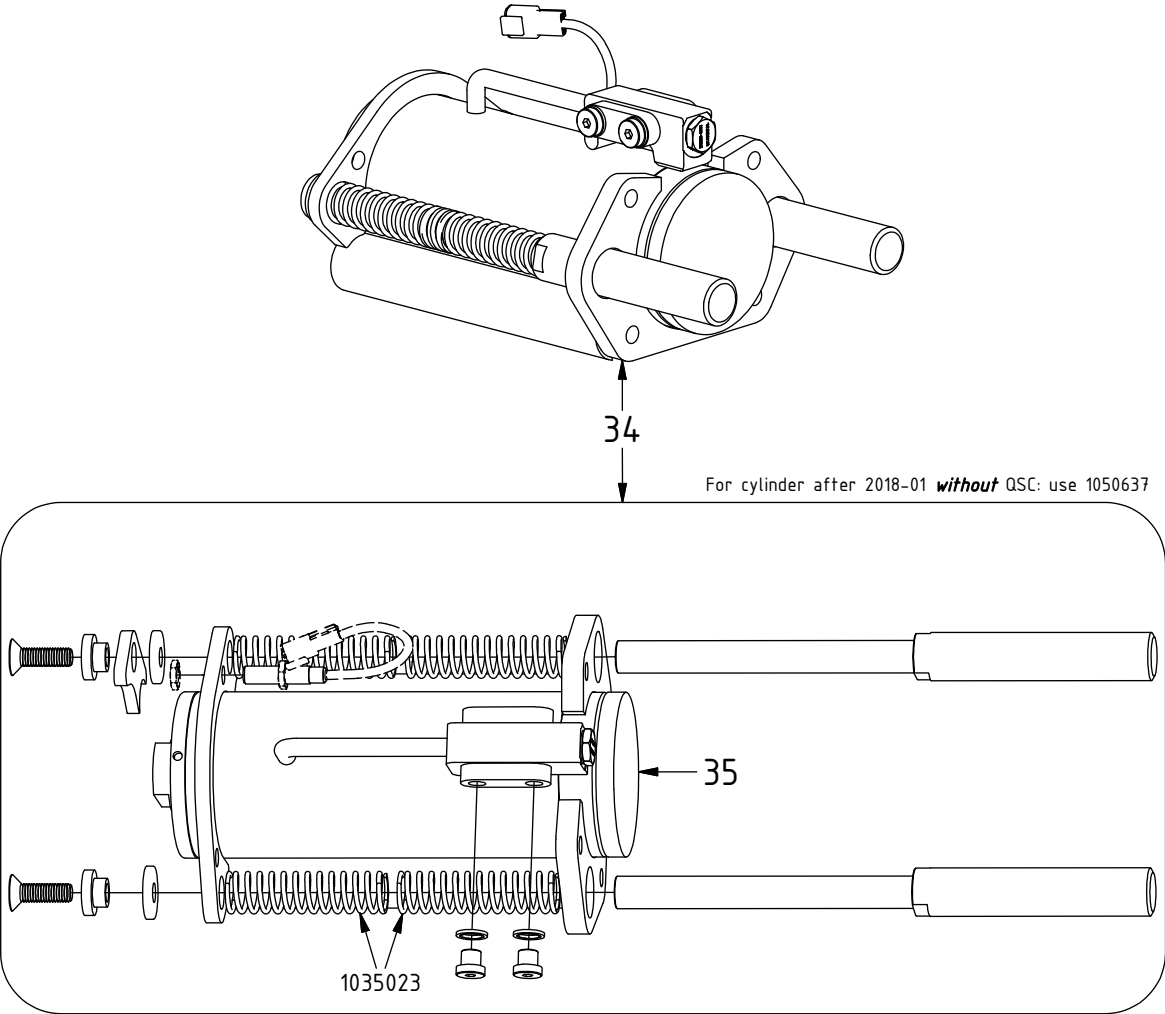
QS80 - Std components

Related spare parts

“V1 QSC” Replaced by “V2 QSC” from 2018-12

| POS | DESCRIPTION | PART | QTY | COMMENTS |
|-----|----------------------------------|---------|-----|---|
| 11 | Lock cylinder QS80 V2 Compl. QSC | 1049727 | 1 | (POS.12-19 included) |
| 12 | Lock cylinder QS80 V2 | 1048783 | 1 | See “Lock cylinders” |
| 34 | Lock cylinder QS80 Compl. QSC | 1044993 | 1 | Replaced by POS.11 from 2018-12 (POS.13, 15-21, 35 included) |
| 35 | Lock cylinder QS80 | 1035494 | 1 | Replaced by POS.12 from 2018-12 |
| 40 | Washer Steel 12.5x28x2 | 6000244 | 2 | |

POS in order of assembly

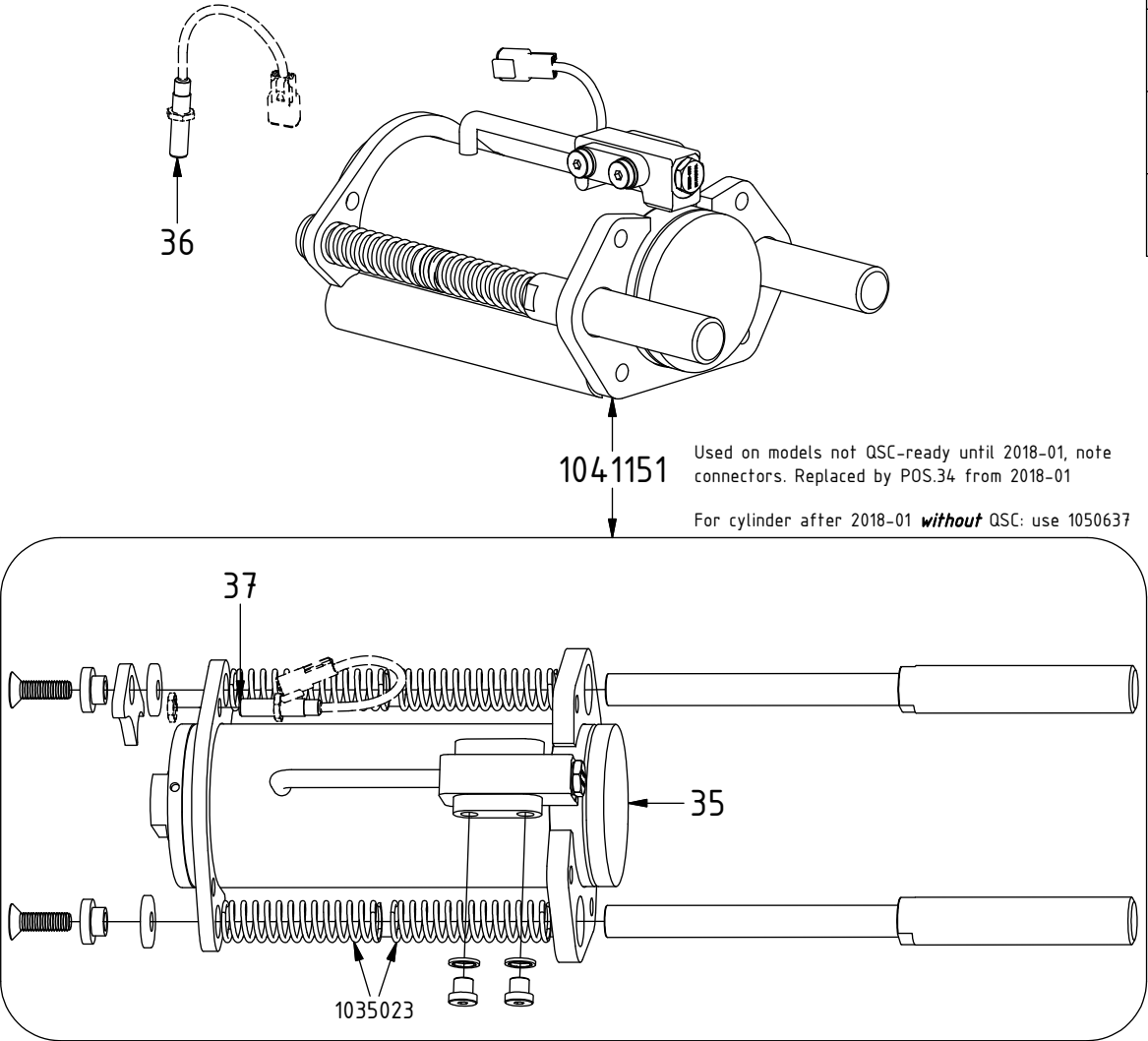


Dashed lines for overview, mounts on other pages/assemblies. indicates instruction. represents hose.

QS80 - Std components

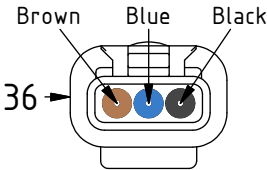
Related spare parts

"V1" Replaced by "V1 QSC" from 2018-01



| POS | DESCRIPTION | PART | QTY | COMMENTS |
|-----|--|---------|-----|---|
| 1 | Inductive sensor QSC (hook) | 1040358 | 2 | Mount just below surface edge (POS.2-3 included) |
| 12 | Lock cylinder QS80 V2 | 1048783 | 1 | See "Lock cylinders" |
| 13 | Inductive sensor QSC (cylinder) | 1040359 | 1 | Mount 1mm from Sensor plate (POS.2-3 included) |
| 34 | Lock cylinder QS80 Compl. QSC | 1044993 | 1 | Replaced by POS.11 from 2018-12 (POS.13, 15-21, 35 included) |
| 35 | Lock cylinder QS80 | 1035494 | 1 | Replaced by POS.12 from 2018-12 |
| 36 | Inductive sensor (hook) | 1029068 | 1 | Replaced by POS.1 from 2018-01 Mount just below surface edge (POS.2-3 included) |
| 37 | Inductive sensor (cylinder) | 1036833 | 1 | Replaced by POS.13 from 2018-01 Mount 1mm from Sensor plate (POS.2-3 included) |
| 38 | Lock cylinder QS80 V2 Compl. (Spare part only) | 1050637 | 1 | Replaces 1041151. Used without QSC (POS.12, 14-21, 37 included) |

Hook:



Cylinder:

