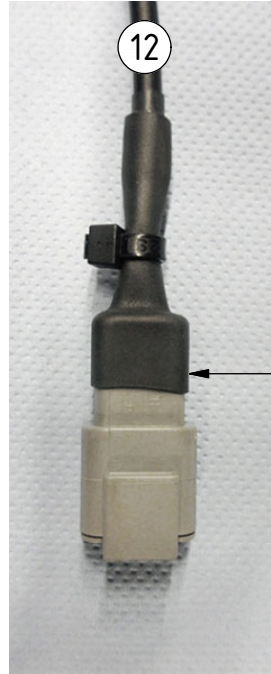
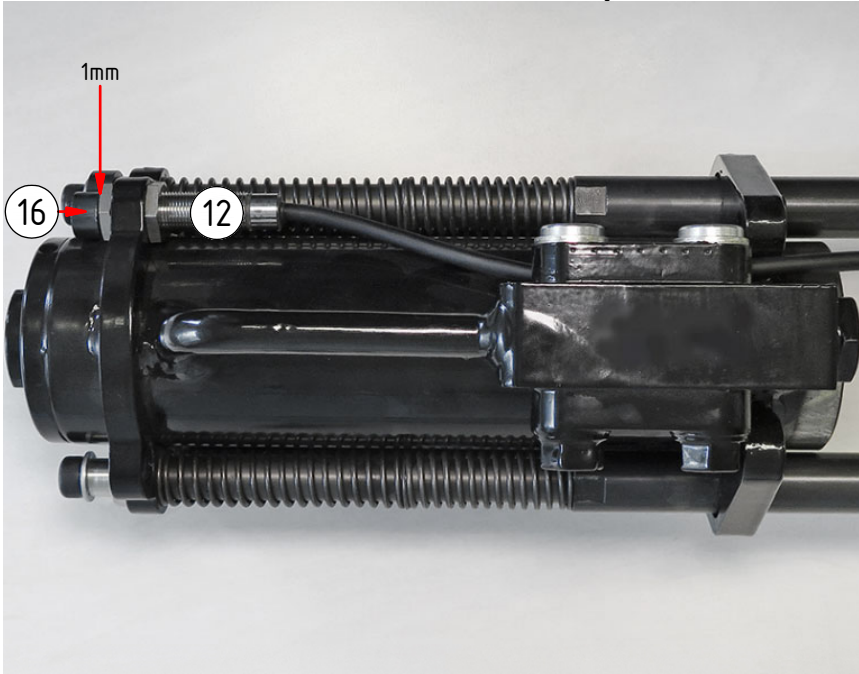


Sensor Cylinder

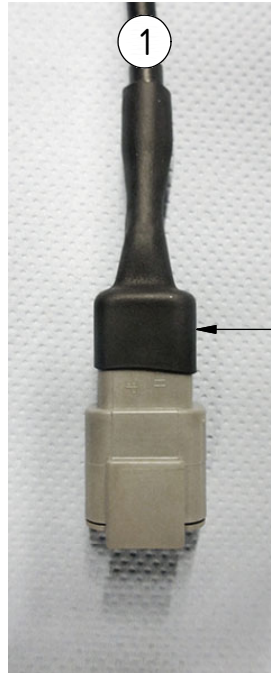
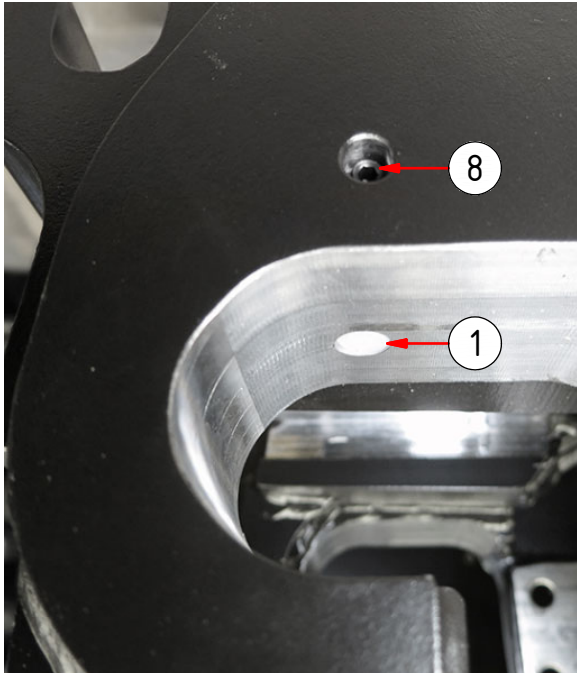
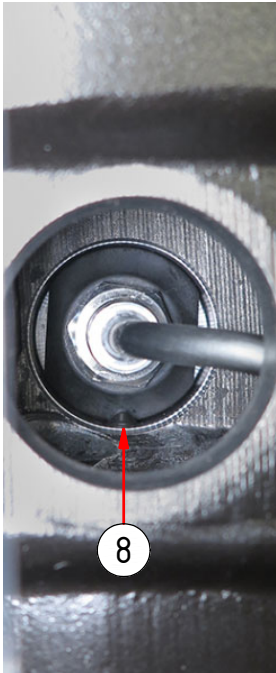
EC226, EC233, EC30, QS70



POS	DESCRIPTION	PART	QTY	COMMENTS
1	Inductive sensor QSC (hook)	1040358	1	Mount just below surface edge
3	Apply dielectric compound before inserting wedge. Peel cables 5mm			
4	Shrink tube on both connectors			
5	Cable tie on cylinder connector			
8	Set Screw M8x16	610808	1	
12	Inductive sensor QSC (cylinder)	1040359	1	Mount 1mm from Sensor plate
16	Sensor plate	1035751	1	Assemble with slight play

POS in order of assembly

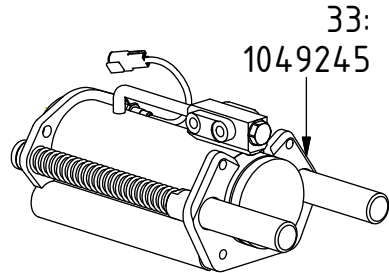
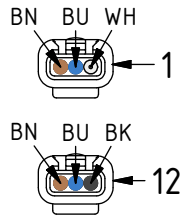
Sensor Hook



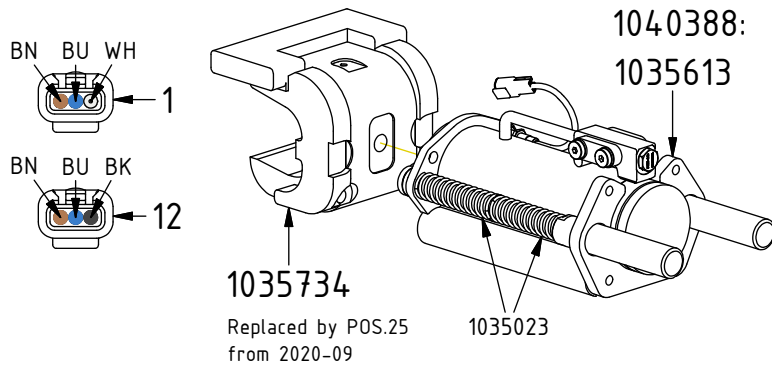
SPARE PARTS

POS	DESCRIPTION	PART	QTY	COMMENTS
1	Inductive sensor QSC (hook)	1040358	1	Mount just below surface edge
10	Lock cyl. QS70 V4 Comp. Forg. QSC	1058123	1	(POS.11-18 incl.)
11	Lock cylinder QS70 V4 Forged	1058122	1	
12	Inductive sensor QSC (cylinder)	1040359	1	Mount 1mm from Sensor plate
25	Hook QS70 Dbl. Radius Cast	1037431	1	
33	Lock cylinder QS70 V4 Compl. QSC	1049726	1	Replaced by POS.10 from 2023-06 (POS.12-18, 1049245 incl.)
34	Spare part cyl. compl. (without QSC)	1050636	1	Spare part use only
35	Inductive sensor (DTM)	1029068	1	Replaced 2018
36	Inductive sensor (cylinder)	1036833	1	Replaced by POS.12 from 2018-01

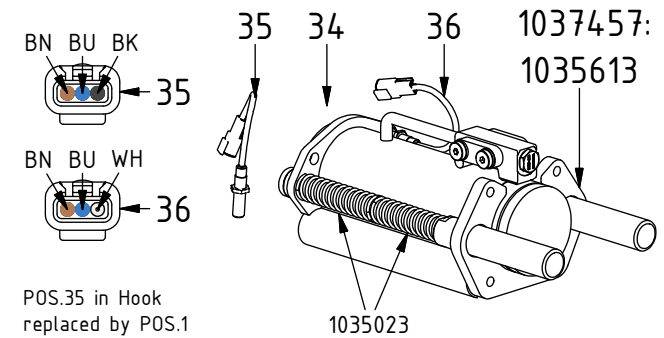
"V4 QSC" replaced by current version from 2023-06



"V3 QSC" replaced by "V4 QSC" from 2018-12



"V3" replaced by "V3 QSC" from 2018-01

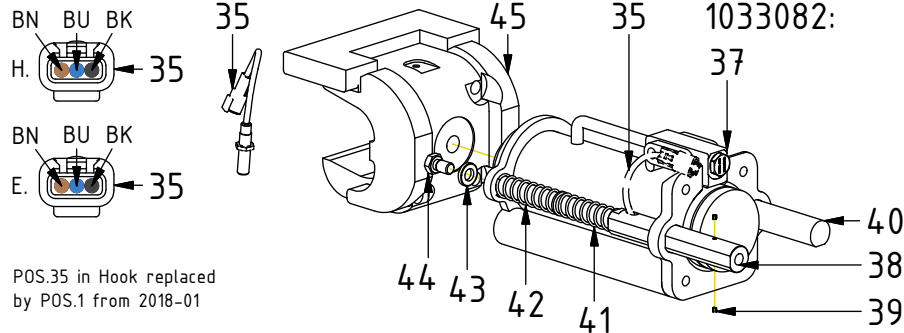


POS.35 in Hook replaced by POS.1

SPARE PARTS

POS	DESCRIPTION	PART	QTY	COMMENTS
1	Inductive sensor QSC (hook)	1040358	1	Mount just below surface edge
14	Ejector QS70	1034935	2	
31	Cover plate QS70 V2 (hole on side)	1034902	1	No cover plate for EC-Oil
35	Inductive sensor (DTM)	1029068	1	Replaced 2018
36	Inductive sensor (cylinder)	1036833	1	Replaced by POS.12 from 2018-01
37	Lock cylinder QS70 V2	1028940	1	Replaced by 1035613 from 2016-09
38	Ejector with inductive sensor	1029067	1	Replaced by POS.14 from 2016-09 (POS.35, 39 incl.)
39	Set screw MC6S 8x25	610816	2	
40	Ejector	1024697	1	Replaced by POS.14 from 2016-09
41	Spring 20x120	1025177	2	
42	Spring 20x85	1025857	2	
43	Washer 13x24x4	611099	2	
44	Screw M6S M12x20 8,8 FZB	610163	2	
45	Hook QS70 (3 holes)	1024200	1	Replaced by 1035734 from 2016-09
46	Cover plate QS70 (holes in back)	1028215	1	Replaced by POS.31. Note holes
47	Washer NL 10mm	611041	2	
48	Screw MC6S M10x30 12.9 Geomet	612018	2	
49	Inductive sensor without connector	810463	2	Replaced by POS.35 from 2015-04
50	Ejector for inductive sensor	1024696	1	Replaced by POS.38 from 2015-04
51	Connector Deutsch DT04-6P	820109	1	Used until 2015-04
52	Pipe plug M12x1,5	711533	1	Used until 2016-09
53	Cable support QS70	1024453	1	Used until 2016-10
54	Washer NL 8mm	611040	2	Used until 2016-10
55	Screw MC6S M8x20 12.9 ZFSHL	6000157	2	Used until 2016-10

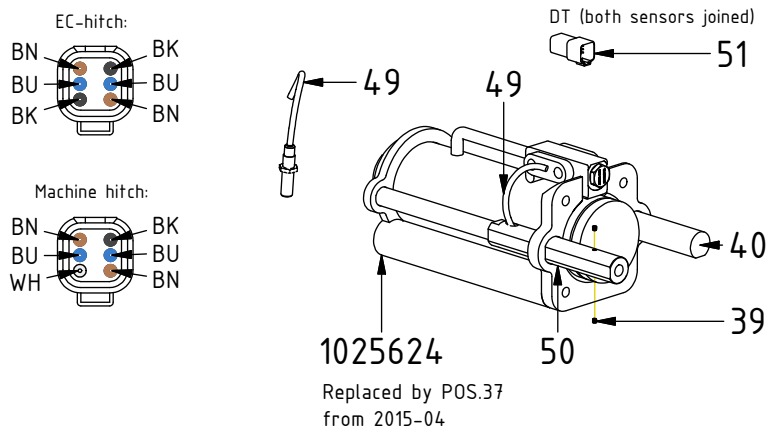
"V2" replaced by "V3" from 2016-09



POS.35 in Hook replaced by POS.1 from 2018-01

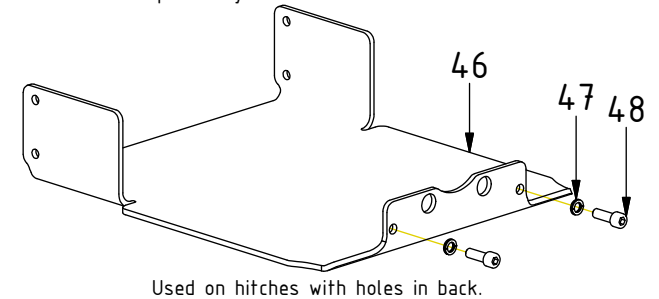
POS.35 on Ejector replaced by POS.36 on cylinder from 2016-09

"V1" replaced by "V2" from 2015-04



1025624
Replaced by POS.37 from 2015-04

Replaced by POS.31 between 2016-2017.



Used on hitches with holes in back.

