

EC206 - ss10

COVERSHEET



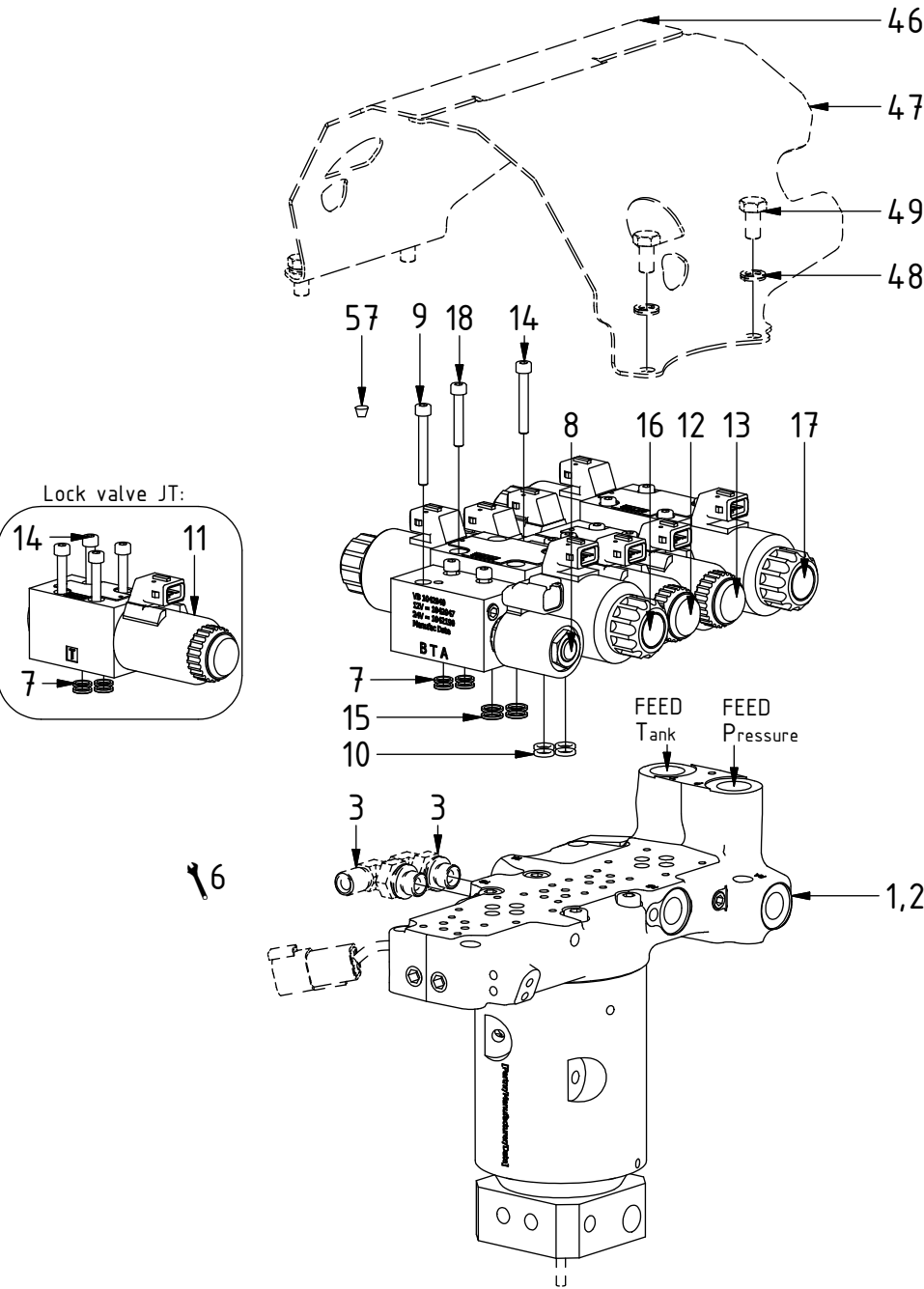
Planned document changes:

Breifly:

No planned changes.

Document changes:

Date:	Change:	Rev. after change:
2023-08-10	Photos updated.	H
2022-07-05	Valves updated.	G
2022-01-13	Photos updated.	F
2021-11-04	EC040 W added. DC2 updated, QSC connected as standard.	E
2020-06-24	Missing item no added.	D
2020-01-23	DC2 EC-Oil photos added.	C
2019-03-27	Photos updated.	B
2019-01-24	Instruction finished, coversheet added.	A



POS	DESCRIPTION	PART	QTY	COMMENTS
1	Valve block & swivel Complete	1026703	1	
2	Valve block & swivel Complete with slipping DTM	1031333	1	
3	Adapter 401-04-04 90° (1/4")	710151	2	Part of rotator frame assembly
6	For option XP			See p.14 for instruction
7	O-ring 7,65x1,78	710960	4	
8	Directional valve NG4 IQS 12V DT	1042047	1	QS, CW, ECPUP, ss SIQ (POS.7 included)
9	MC6S M5x40 12.9	610405	3	Torque: 9,7Nm
10	O-ring square ring 7,66x1,68	7000579	8	
11	Directional valve NG4 12V JT	730312	1	(POS.7 included)
12	Directional valve NG4 prop 12V	730329	1	(POS.10 included)
13	Directional valve NG4 12V	730328	1	(POS.10 included)
14	MC6S M5x35 12.9	610404	8	Torque: 9,7Nm. QTY: 12 for Lock JT
15	O-ring 8,75x1,78	710959	8	
16	Directional valve NG6 12V	7001617	1	(POS.15 included)
17	Directional valve prop 12V	7001614	1	(POS.15 included)
18	MC6S M5x30 12.9	610403	8	Torque: 9,7Nm
46	EC206 Cover plate	1016524	1	
47	EC206 Cover plate	1016523	1	
48	Washer NL8	611040	4	
49	M6S 8x16 8.8 FZB	610122	4	
57	Plastic plug (red) for valves	790156	16	

POS in order of assembly

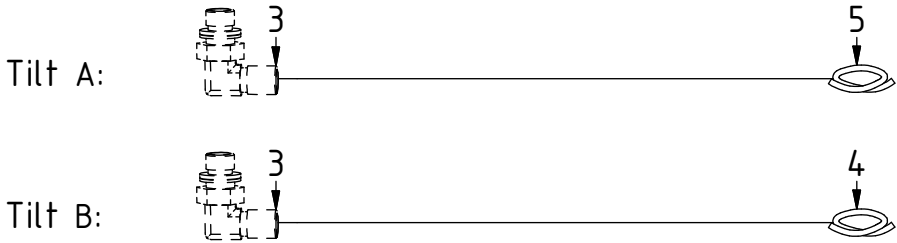
Hoses
FEED (Std)



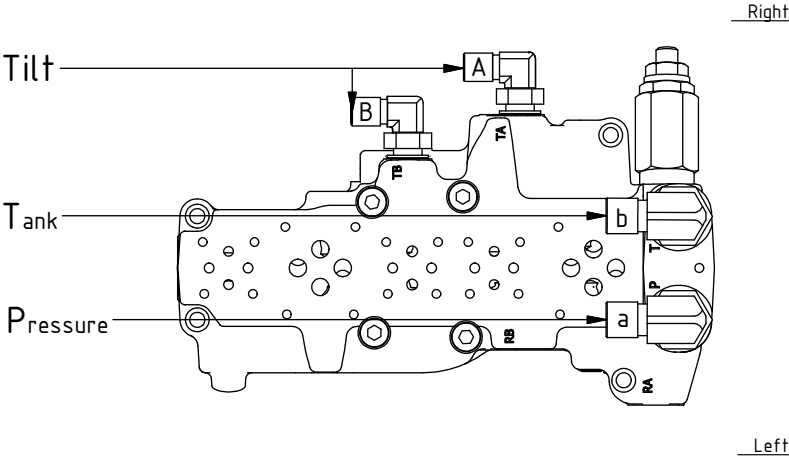
FEED EC-Oil



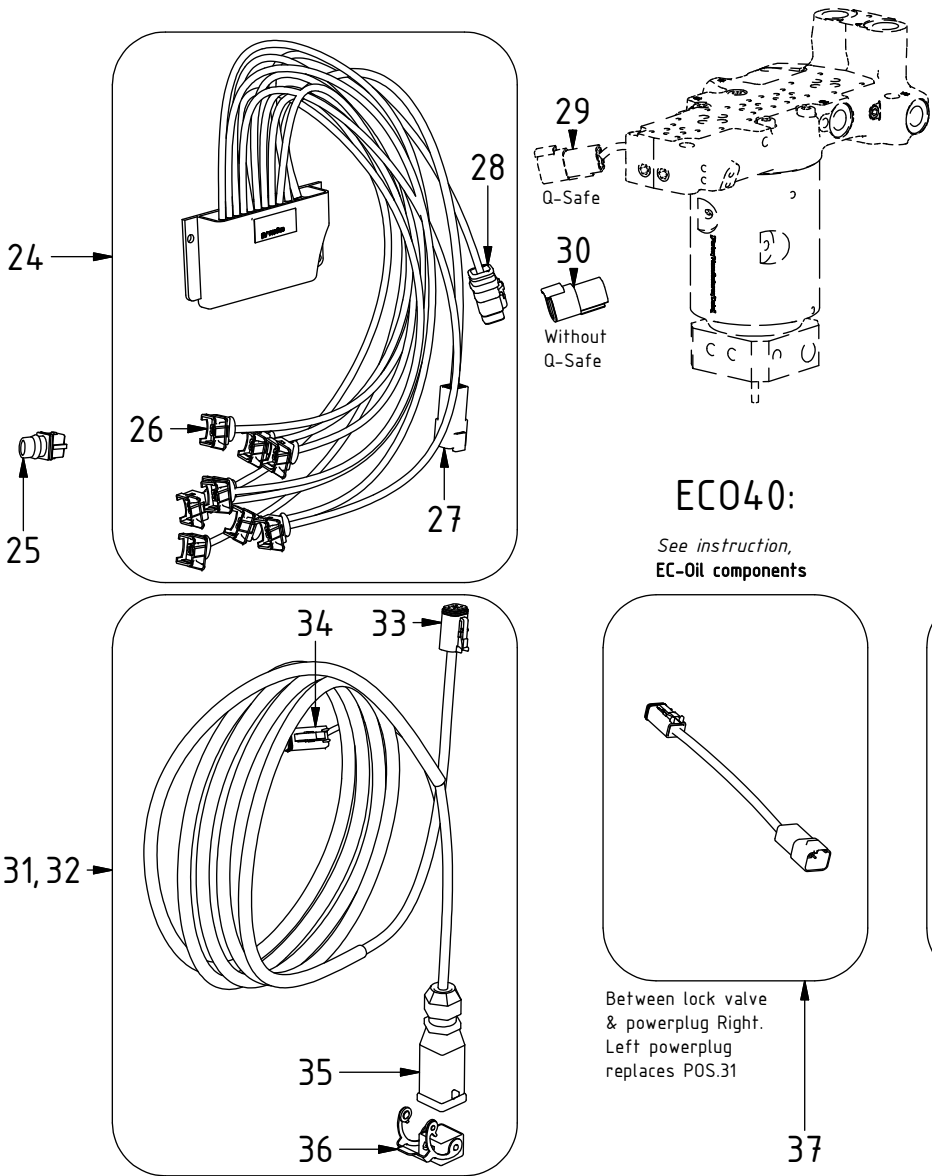
TILT



POS	DESCRIPTION	PART	QTY	COMMENTS
3	Adapter 401-04-04 90° (1/4")	710151	2	Part of rotator frame assembly
4	Hose Tilt Short	742911	1	
5	Hose Tilt Long	742912	1	
20	Adapter 401-06-08 90° (3/8"-1/2")	710157	2	
21	Hose Feed	742913	2	
22	Hose Feed EC040	7001628	2	
23	Hose Feed EC045/50	7000701	2	

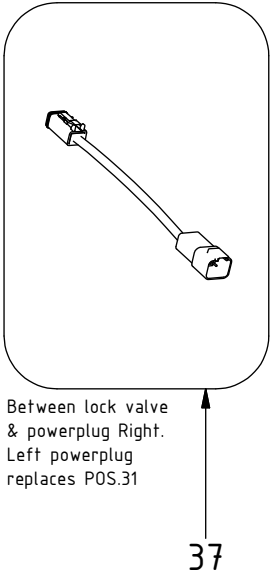


DC2



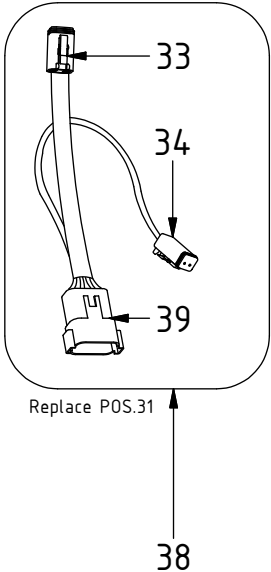
ECO40:

See instruction,
EC-Oil components



ECO45/50:

See instruction,
EC-Oil components

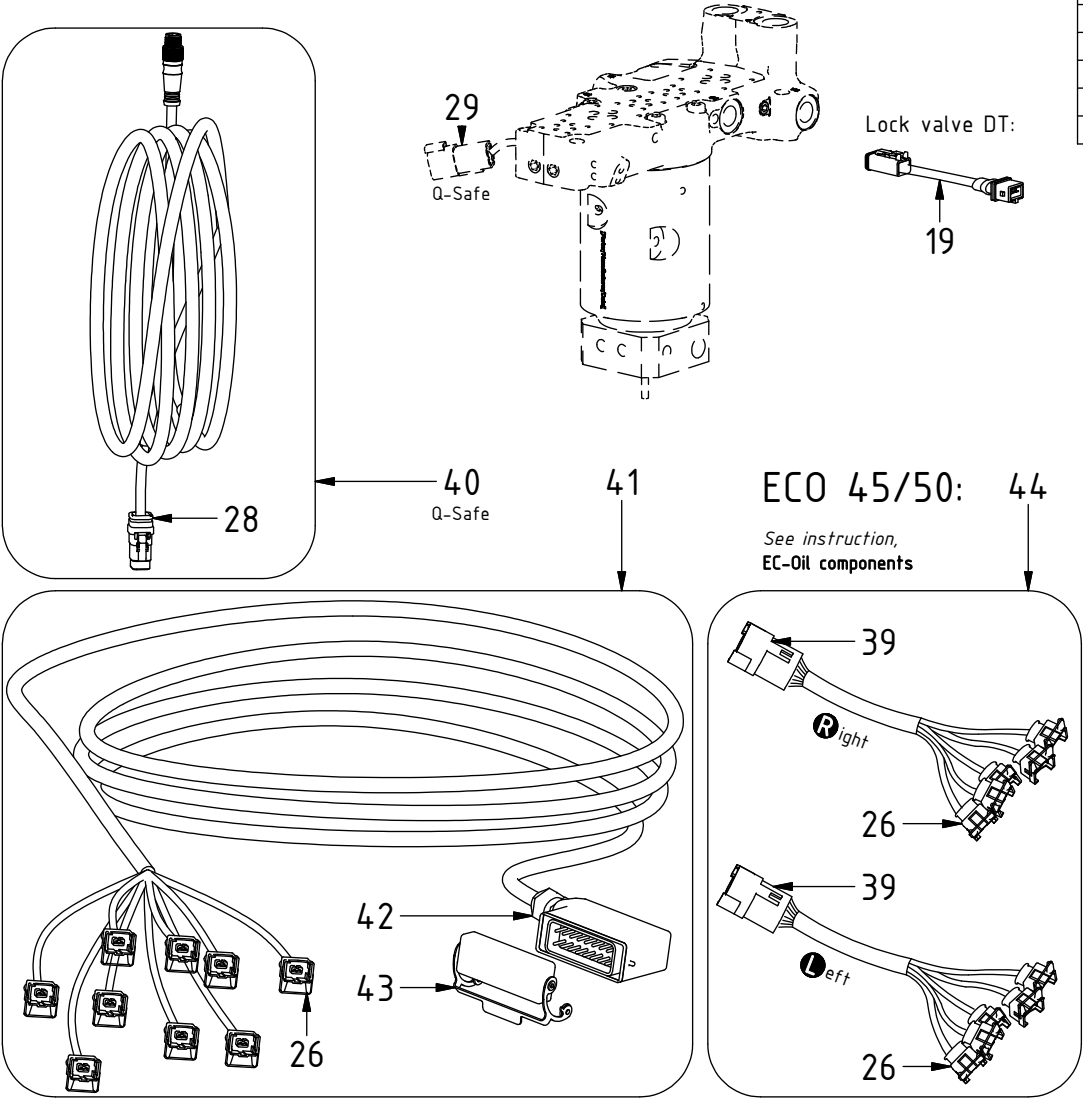


POS	DESCRIPTION	PART	QTY	COMMENTS
24	Tiltrotator module DC2 Q-Safe	842139	1	
25	Jumper JT QSC connected	1018662	1	Plug JT connector "1"
26	Connector JT	810218	9	
27	Connector Deutsch DT04-4P	820108	2	
28	Connector Deutsch DTM06-6S	8000053	1	
29	Only for Q-Safe, connector			
30	Protection plug DTM	8000090	1	
31	Aggregate cable DC2 compl. QSC DT	8001201	1	
32	Aggregate cable DC2 compl. QSC JT	8000175	1	For Lock valve JT. Replace POS.31
33	Connector Deutsch DT06-4S	820218	1	
34	Connector Deutsch DT06-2S	820219	1	
35	ILME contact 12P DC2 Complete	841192	2	
36	ILME cover 12P contact with jumper	810208	2	
37	Adaptercable ECO40W DC2 QSC DTM	1057843	1	For ECO40
38	Adaptercable ECO W DC2 QSC DTM	1048529	1	For ECO45/50
39	Connector Deutsch DTM04-12P	8000177	1	

EC206 - ss10

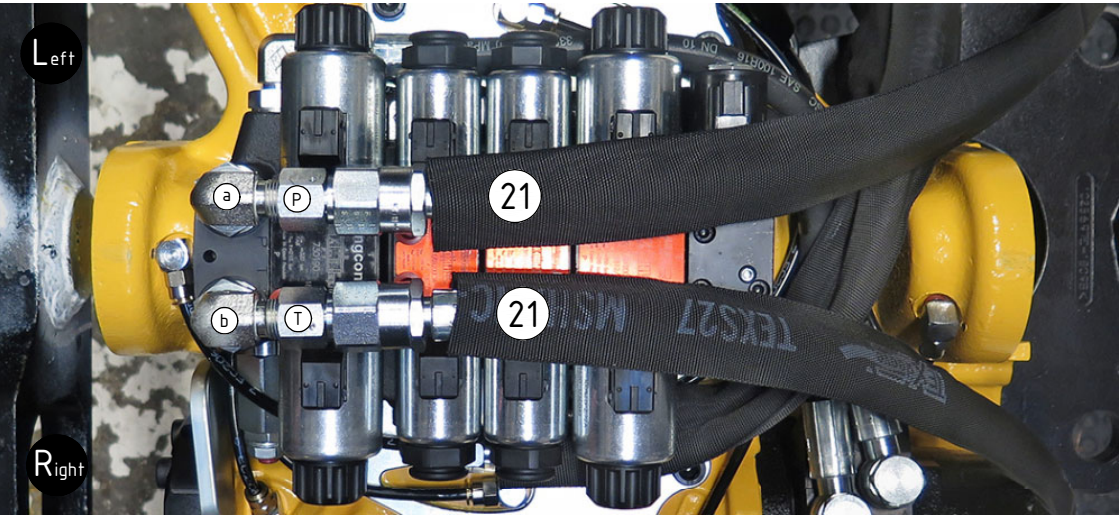
ss10 (SVAB)

POS	DESCRIPTION	PART	QTY	COMMENTS
19	Adapter cable DT-JT	1017478	1	QS, CW, ECPUP, ss SIQ (Previously also for DC2)
26	Connector JT	810218	9	
28	Connector Deutsch DTM06-6S	8000053	1	
29	Only for Q-Safe, connector			Attach to POS.40 or See EC-Oil comp
39	Connector Deutsch DTM04-12P	8000177	1	
40	Cable QS QLM tiltrotator SVAB	842148	1	For Q-Safe
41	Aggregate cable SVAB Complete	303465	1	
42	ILME contact 16P Complete	810203	1	
43	ILME cover 16P contact with jumper	810235	1	
44	Adapter cable ECO (DTM) SVAB	1029599	1	For EC045/50. Replace POS.40-41

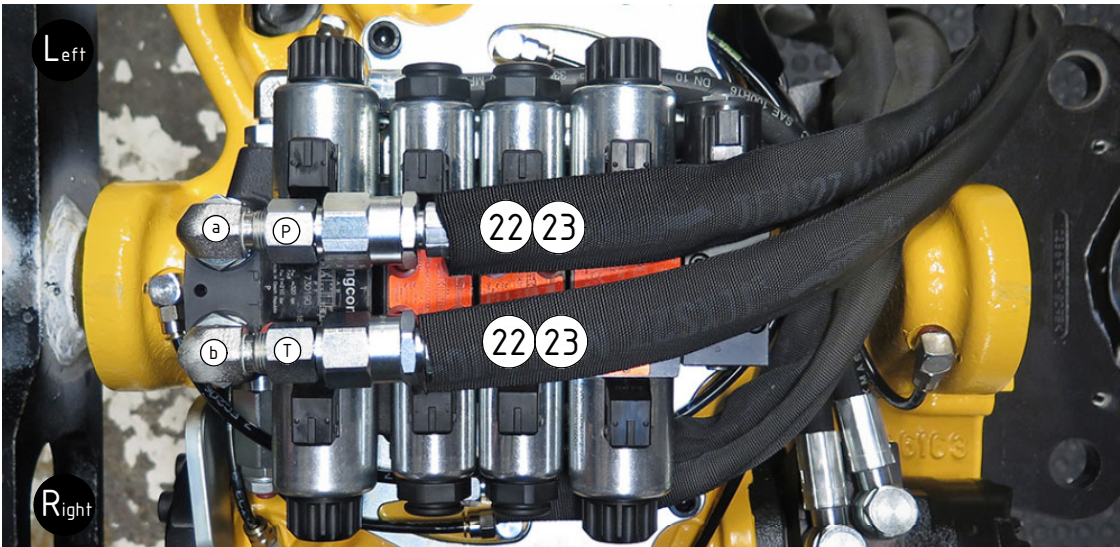


Hoses
FEED (Std)

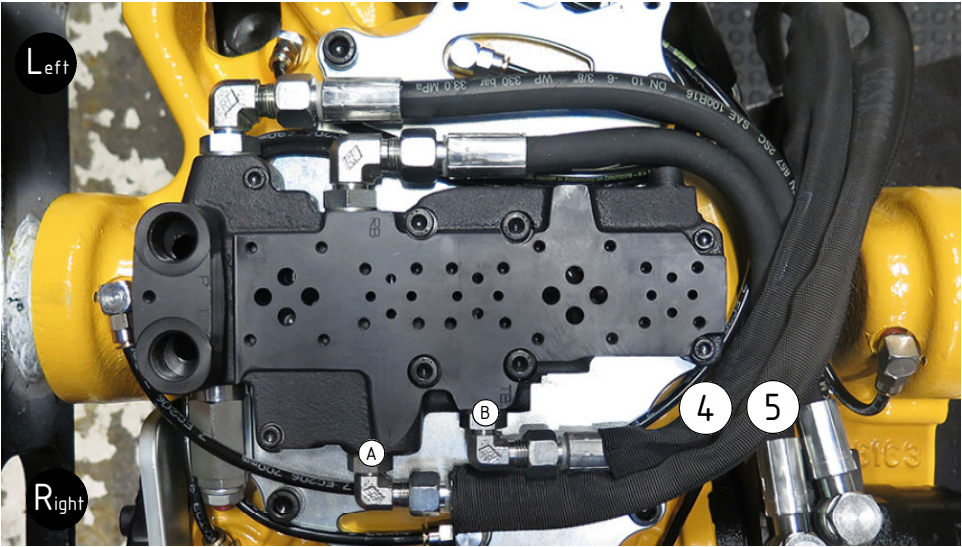
POS	DESCRIPTION	PART	QTY	COMMENTS
4	Hose Tilt Short	742911	1	
5	Hose Tilt Long	742912	1	
21	Hose Feed	742913	2	
22	Hose Feed EC040	7001628	2	
23	Hose Feed EC045/50	7000701	2	



FEED EC-Oil



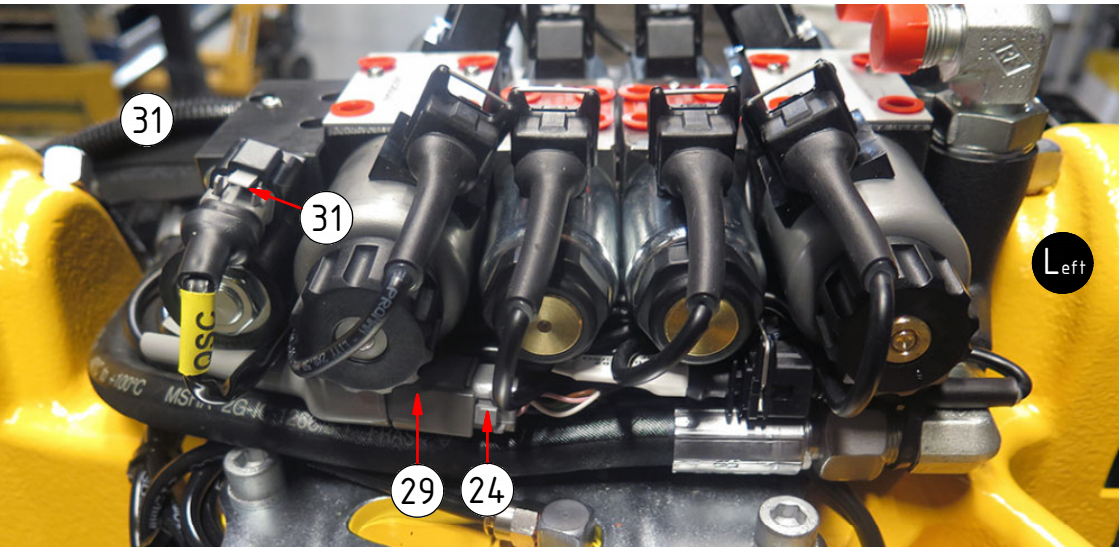
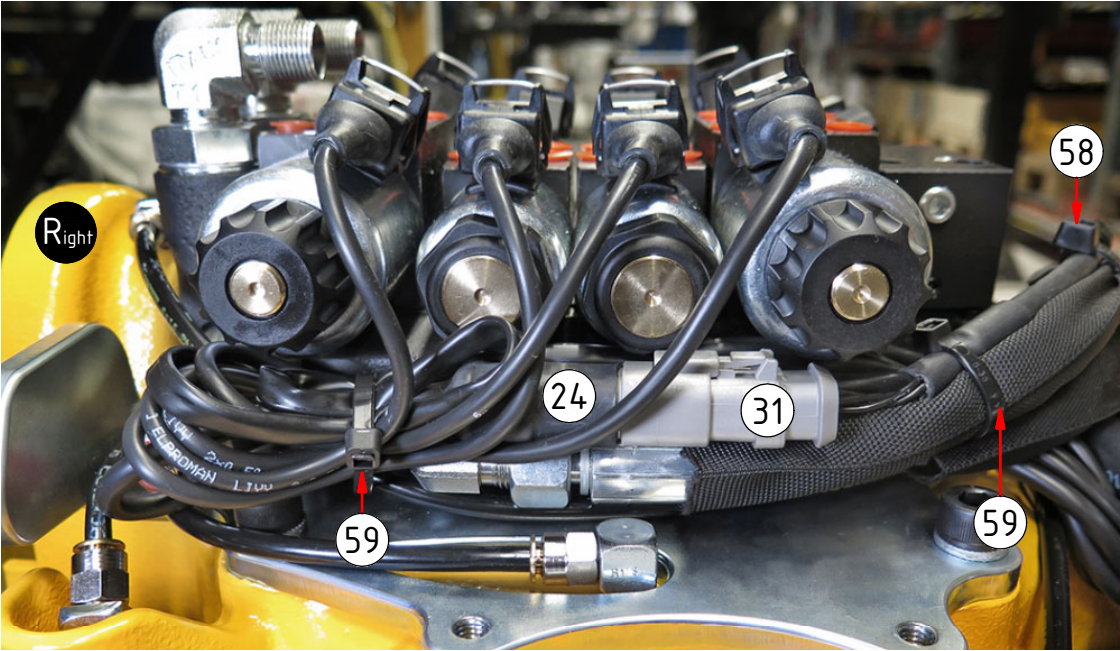
TILT



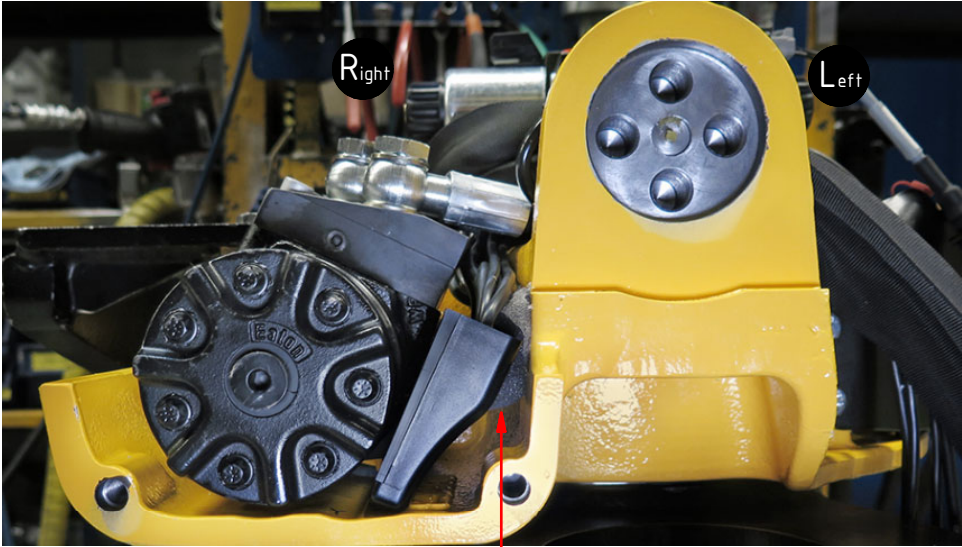
Dashed lines for overview, mounts on other pages/assemblies. \ indicates instruction. represents hose.

DC2
Std

Cables/connectors:



POS	DESCRIPTION	PART	QTY	COMMENTS
24	Tiltrotator module DC2 Q-Safe	842139	1	
29	Only for Q-Safe, connector			
30	Protection plug DTM (if no QS)	8000090	1	
31	Aggregate cable DC2 comp. QSC DT	8001201	1	
32	Aggregate cable DC2 compl. QSC JT	8000175	1	For Lock valve JT. Replace POS.31
58	Cable tie 7,8x360	1021587	1	
59	Cable tie 4,8x360	1021586	1	



Use foam rubber to steady DC2-box

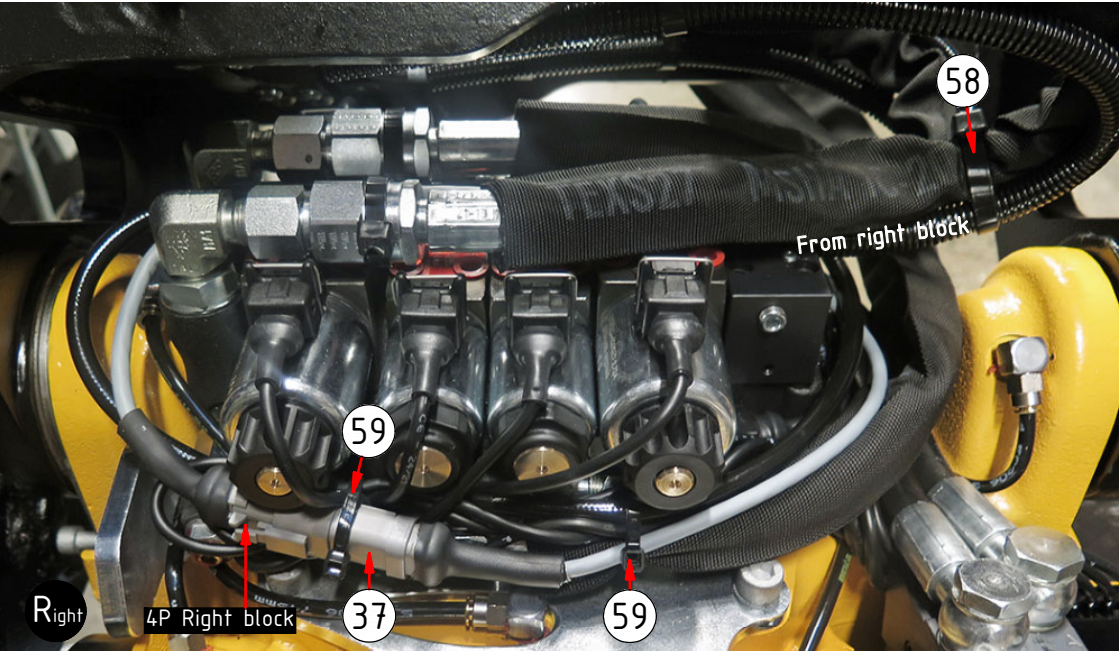
Dashed lines for overview, mounts on other pages/assemblies. indicates instruction. represents hose.

See instruction,
EC-Oil components

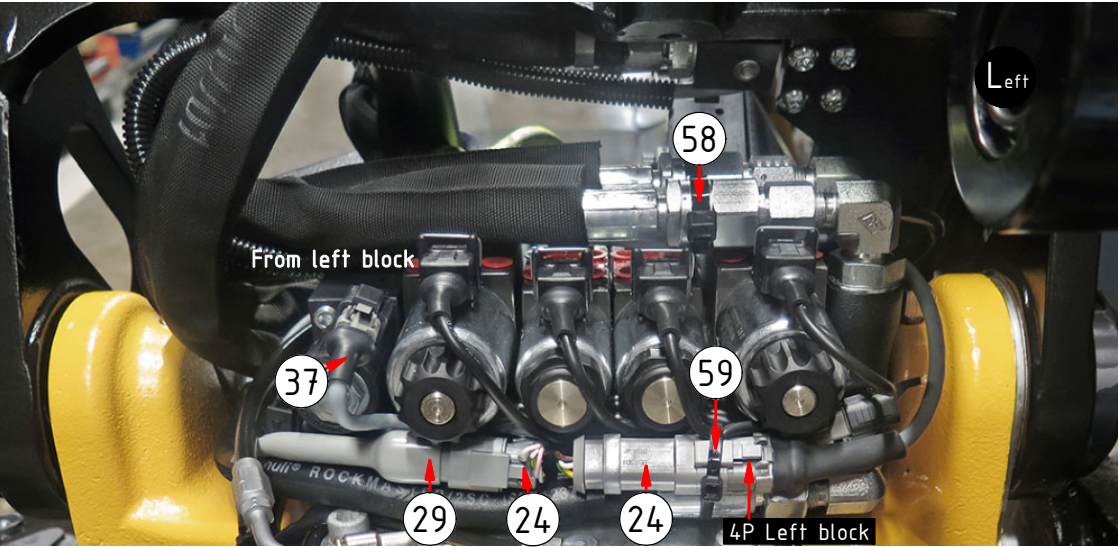
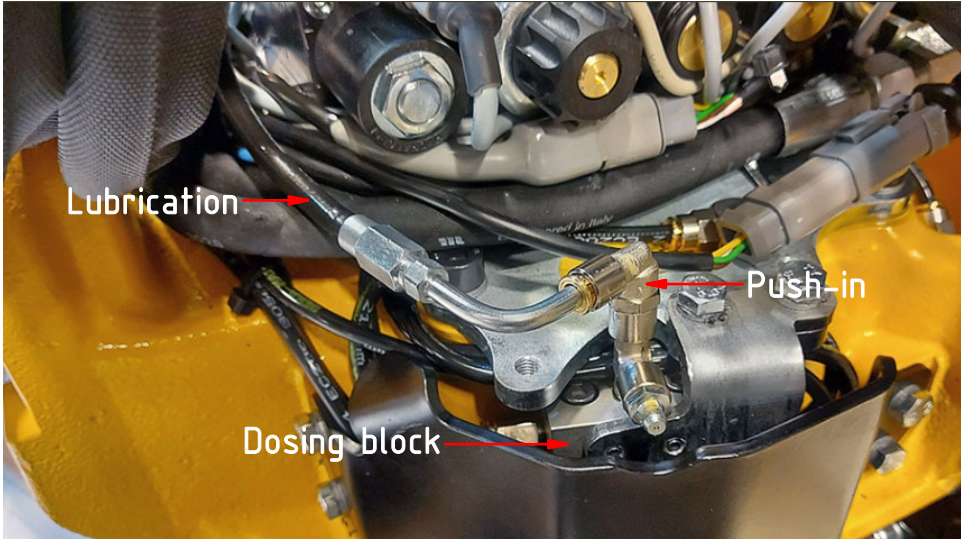
DC2
EC040

Cables/connectors:

POS	DESCRIPTION	PART	QTY	COMMENTS
24	Tiltrotator module DC2 Q-Safe	842139	1	
29	Only for Q-Safe, connector			
37	Adaptercable EC040W DC2 QSC DTM	1057843	1	For EC040
58	Cable tie 7,8x360	1021587	1	
59	Cable tie 4,8x360	1021586	1	



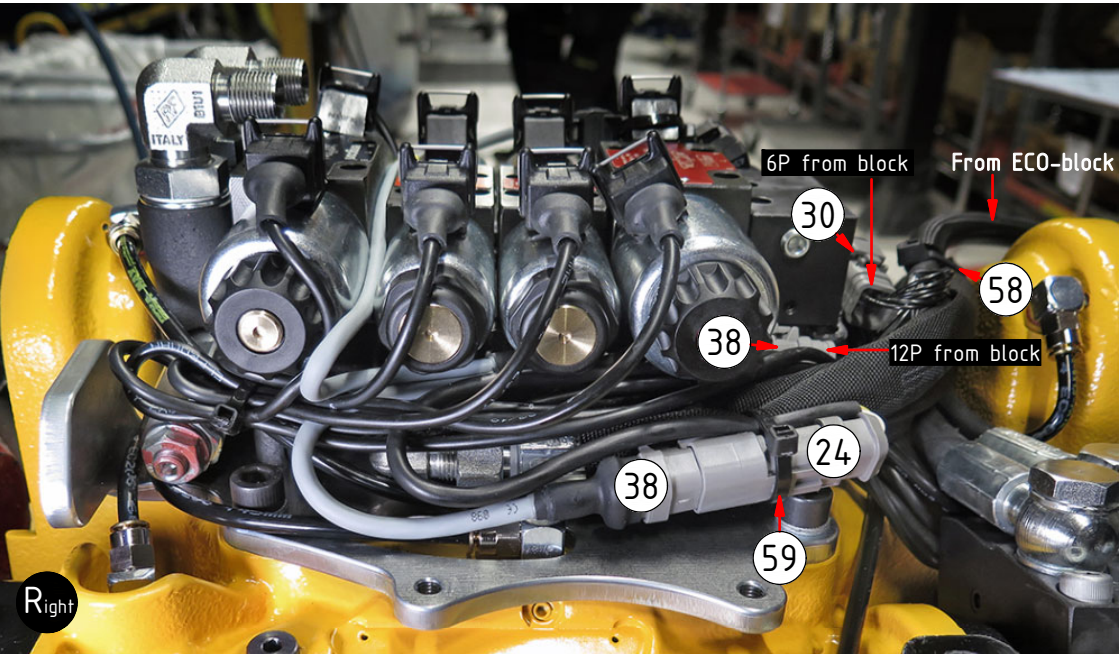
Lubrication:



See instruction,
EC-Oil components

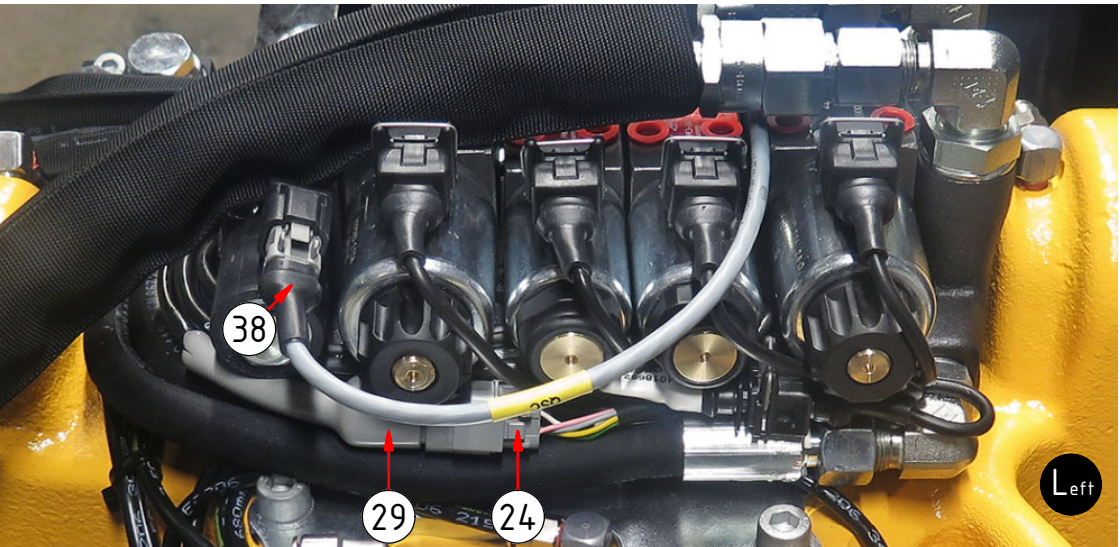
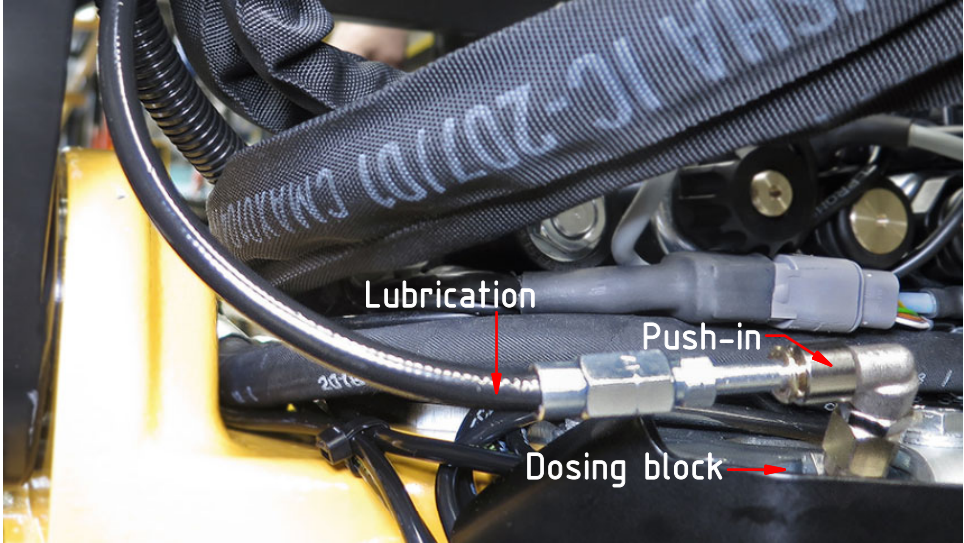
DC2
EC045/50

Cables/connectors:



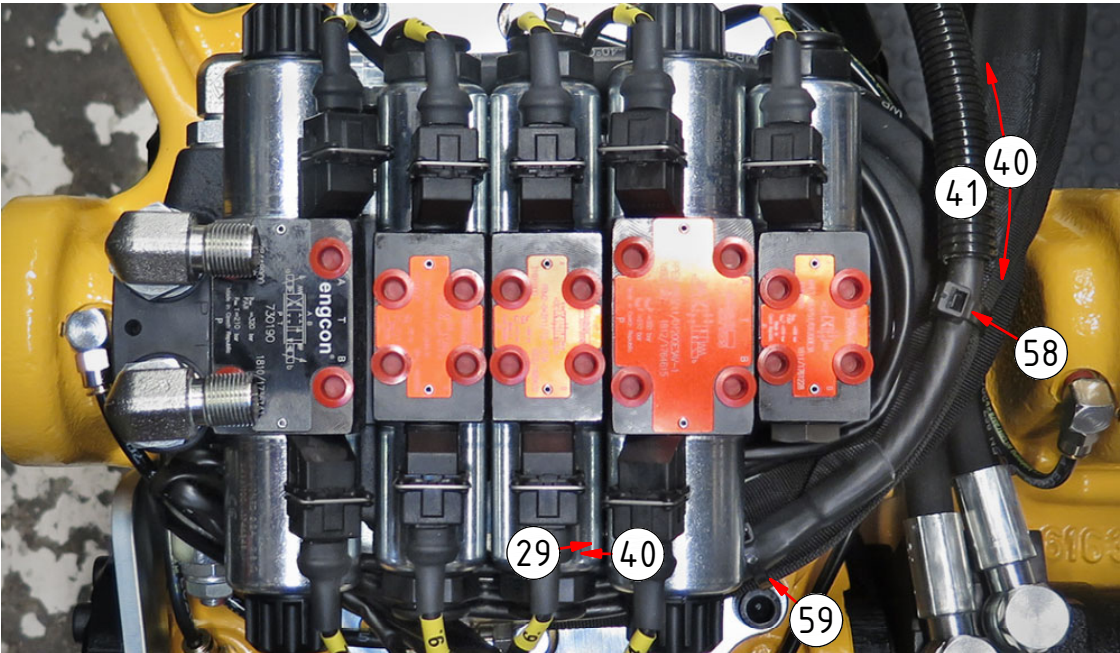
POS	DESCRIPTION	PART	QTY	COMMENTS
24	Tiltrotator module DC2 Q-Safe	842139	1	
29	Only for Q-Safe, connector			
30	Protection plug DTM	8000090	1	
38	Adaptercable ECO W DC2 QSC DTM	1048529	1	For EC045/50
58	Cable tie 7,8x360	1021587	1	
59	Cable tie 4,8x360	1021586	1	

Lubrication:



ss10 (SVAB)
Std

Cables/connectors:



POS	DESCRIPTION	PART	QTY	COMMENTS
29	Only for Q-Safe, connector			
40	Cable QS QLM tiltrotator SVAB	842148	1	For Q-Safe
41	Aggregate cable SVAB Complete	303465	1	
58	Cable tie 7,8x360	1021587	1	
59	Cable tie 4,8x360	1021586	1	

POS in order of assembly

See instruction,
EC-Oil components

ss10 (SVAB)
ECO45/50

POS	DESCRIPTION	PART	QTY	COMMENTS
29	Only for Q-Safe, connector			Attach to 6P from Left block
44	Adapter cable ECO (DTM) SVAB	1029599	1	For ECO45/50. Replace POS.40-41
45	Plug JT	1045154	1	Plug JT connector "1" on Right

POS in order of assembly

Cables/connectors:



Photo needed: POS.29 connecting to left 6P. POS.44 connecting to ECO-blocks (Seen from Right)

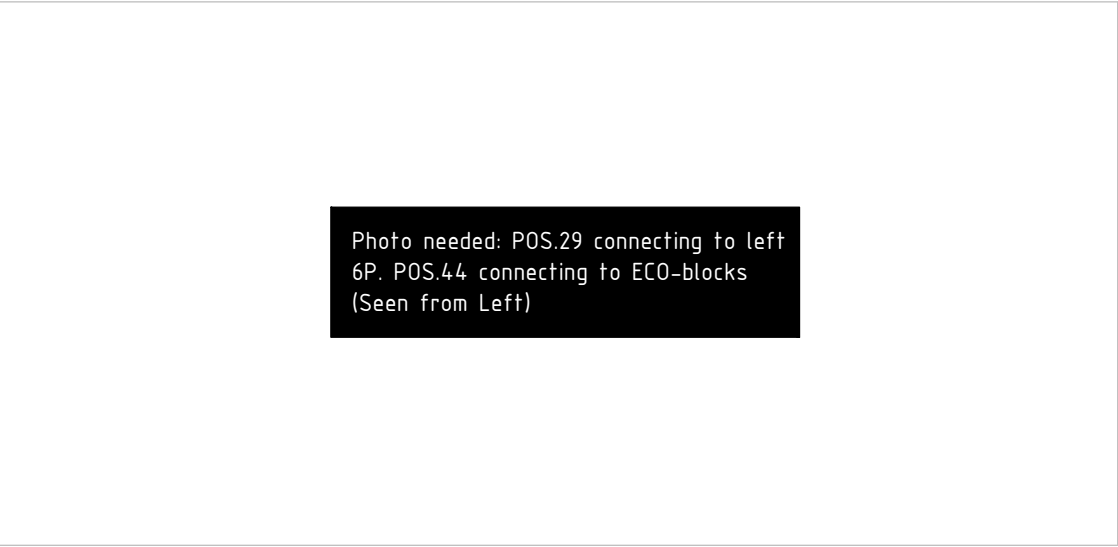
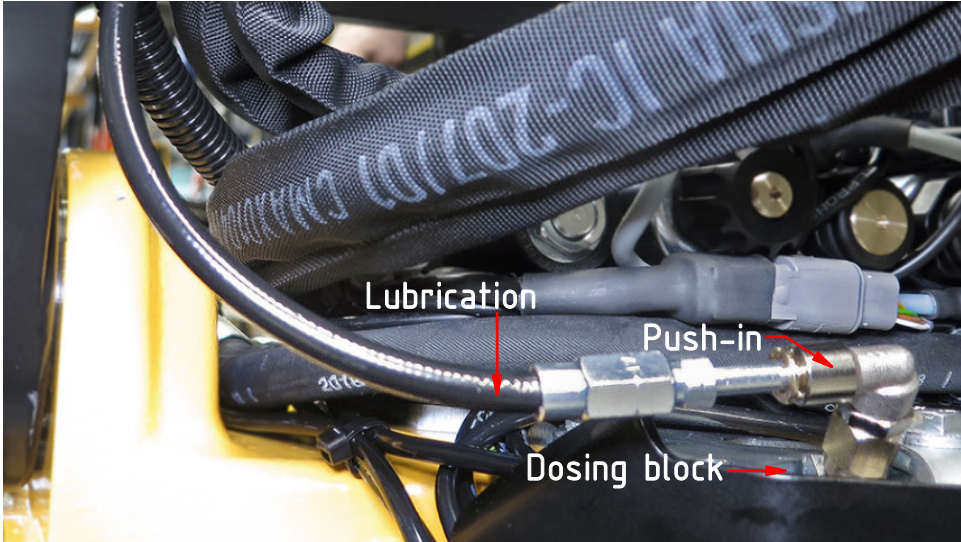


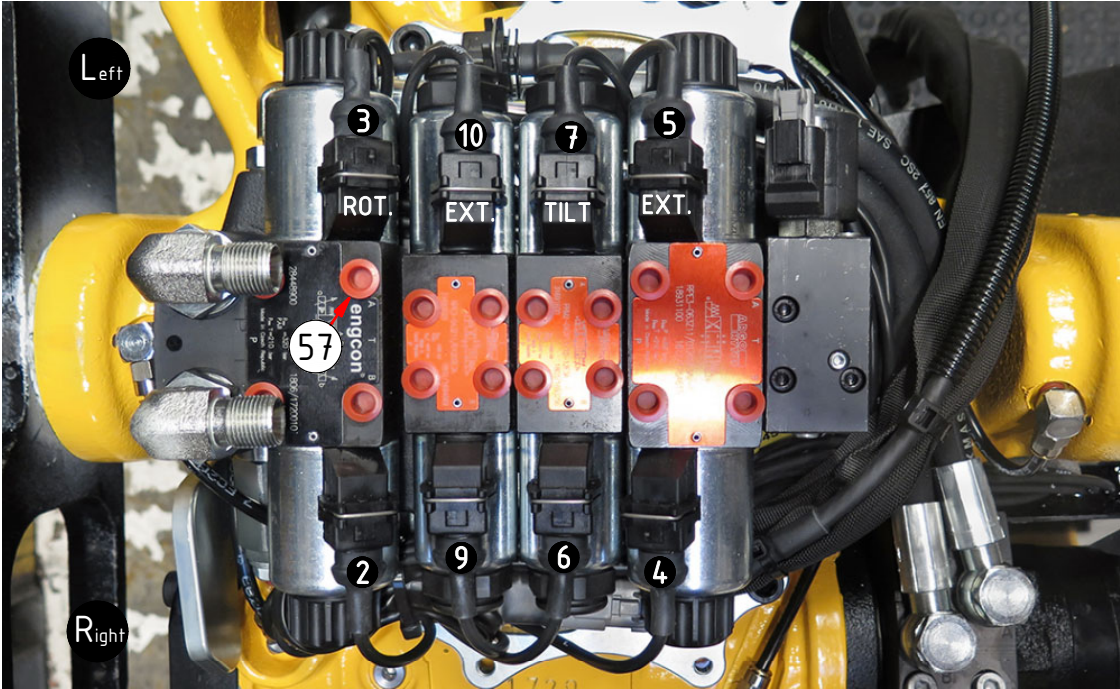
Photo needed: POS.29 connecting to left 6P. POS.44 connecting to ECO-blocks (Seen from Left)

Lubrication:



DC2 & ss10 (SVAB)
When not equipped with grab

Std & DC2 EC-Oil 45/50
JT marked with numbers:



POS	DESCRIPTION	PART	QTY	COMMENTS
57	Plastic plug (red) for valves	790156	16	

ss10 (SVAB) EC-Oil 45/50
JT marked with numbers: ("1" from R is not connected)



Lock valve IQS DT:



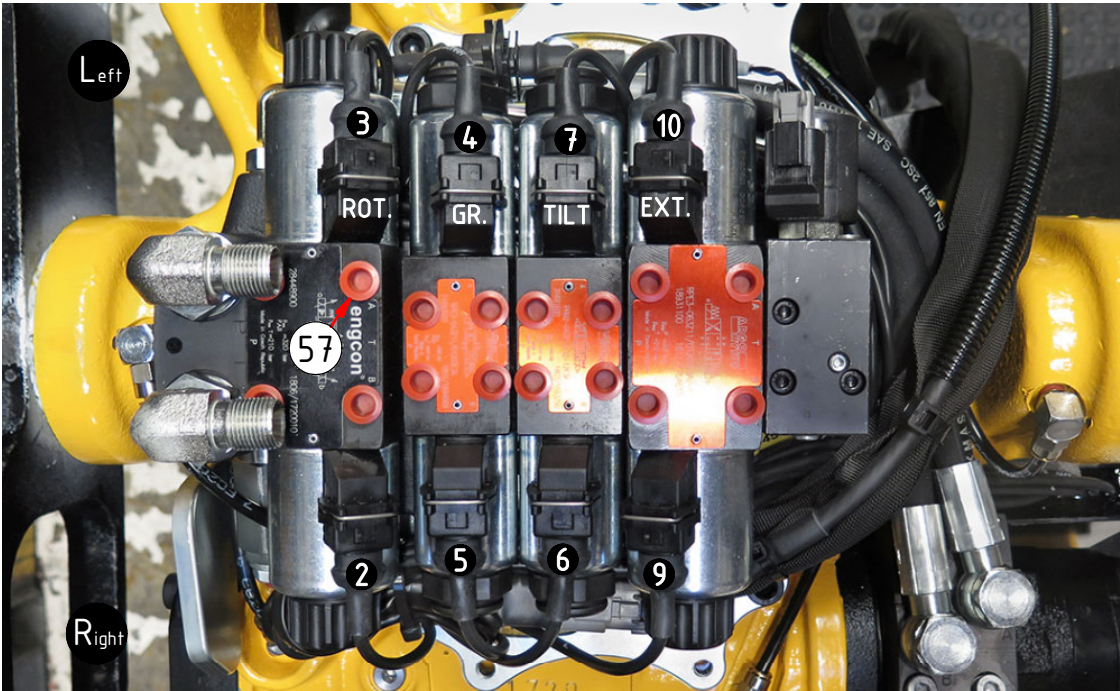
Lock valve JT:



Dashed lines for overview, mounts on other pages/assemblies. \ indicates instruction. represents hose.

DC2 & ss10 (SVAB)
When equipped with grab

Std & DC2 EC-Oil 45/50
JT marked with numbers:



POS	DESCRIPTION	PART	QTY	COMMENTS
57	Plastic plug (red) for valves	790156	16	

ss10 (SVAB) EC-Oil 45/50
JT marked with numbers: ("1" from R is not connected)



Lock valve IQS DT:

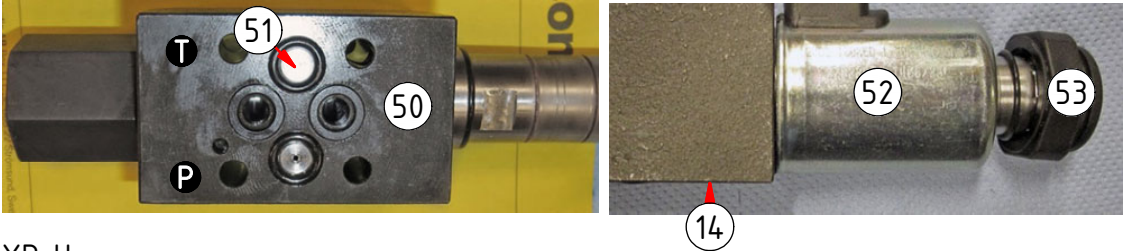


Lock valve JT:

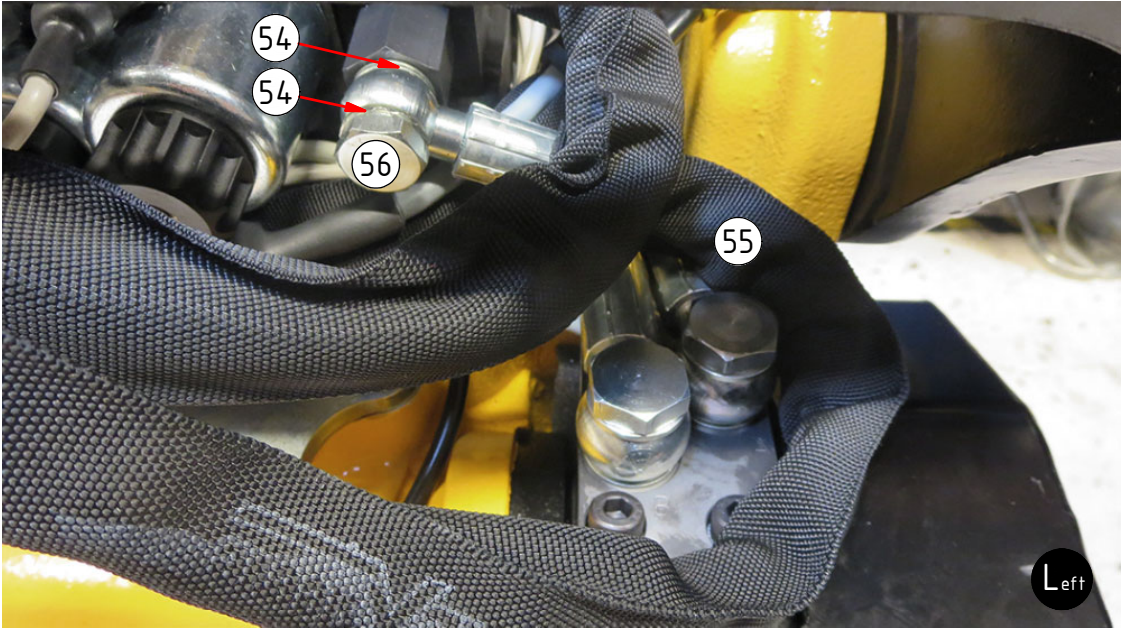


special / options

XP valve:



XP Hose:



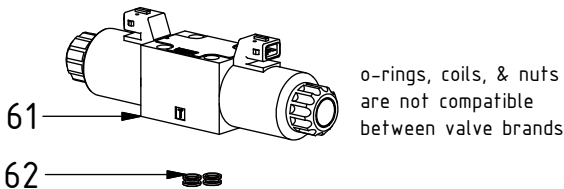
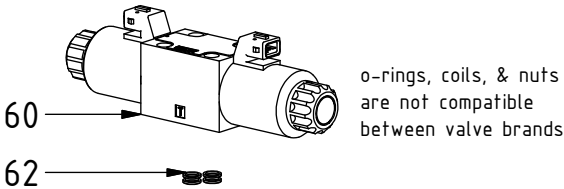
POS	DESCRIPTION	PART	QTY	COMMENTS
14	MC6S M5x35 12.9	610404	8	Torque: 9,7Nm. QTY: 12 for Lock JT
50	Directional valve XP crossparallel NG4 without Coil	730321	1	Nut (POS.53) and o-ring with chokevalve included. Assemble with POS.52
51	Plug Dysa D0 for NG4 / VRP2-04	790191	1	O-ring included
52	Coil NG4 12V JT	730313	2	
53	Nut directional valve NG4	1006785	4	
54	Washer GBR04	710702	2	
55	Hose XP Drainage	7000321	1	
56	Banjo bolt	710271	1	

POS in order of assembly

Related spare parts

POS	DESCRIPTION	PART	QTY	COMMENTS
15	O-ring 8,75x1,78	710959	8	
16	Directional valve NG6 12V	7001617	1	(POS.15 included)
17	Directional valve prop 12V	7001614	1	(POS.15 included)
24	Tiltrotator module DC2 Q-Safe	842139	1	
31	Aggregate cable DC2 comp. QSC DT	8001201	1	
32	Aggregate cable DC2 compl. QSC JT	8000175	1	For Lock valve JT. Replace POS.31
60	Argo hytos valve NG6 12V	730101	1	Replaced by POS.16 (ATOS)
61	Argo hytos valve prop 12V	730190	1	Replaced by POS.17 (ATOS)
62	O-ring 9,25x1,78	710901	8	Used until 2022-06

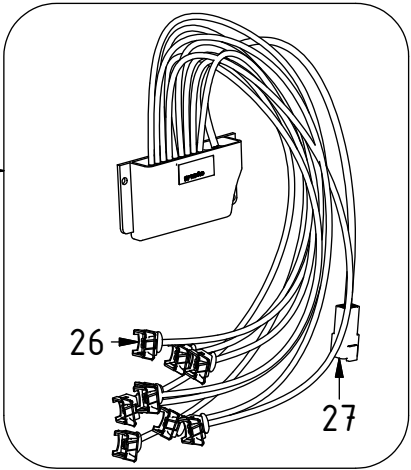
Used until 2022-06



DC2:

842005

Replaced by POS.24 from 2016-03



841121

Replaced by POS.32 from 2018-01

