

COVERSHEET

Planned document changes:

Briefly:

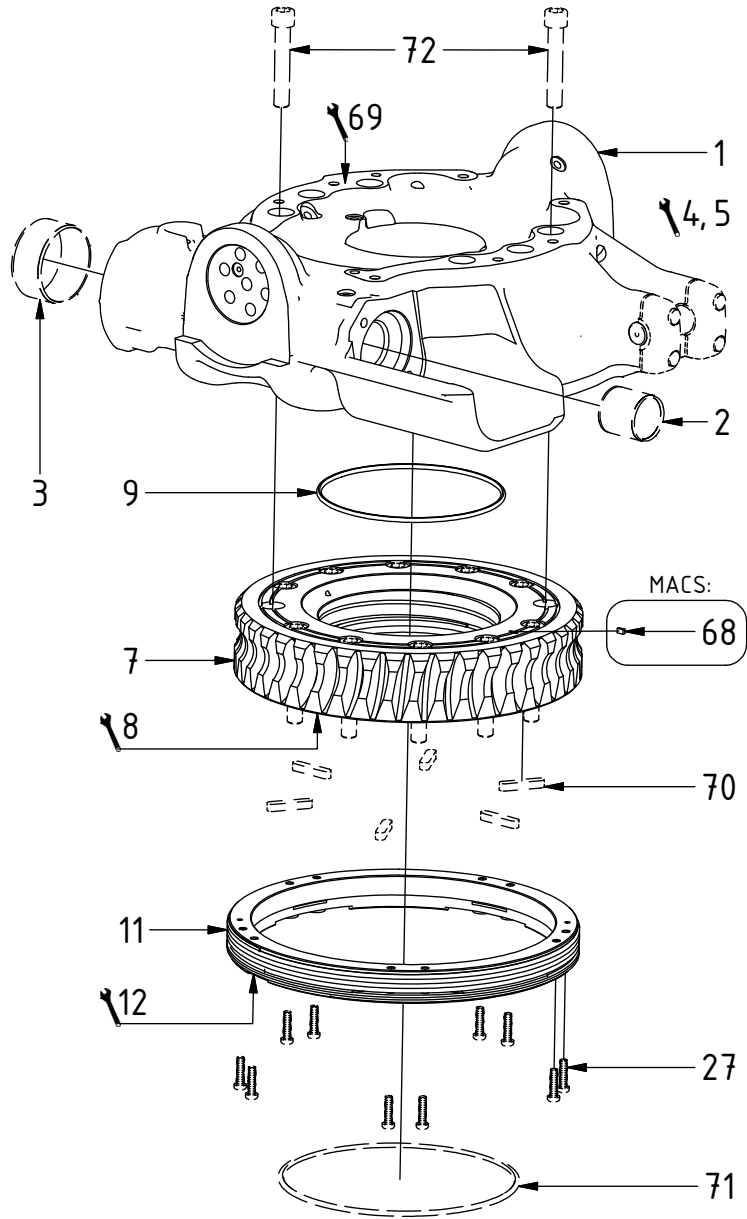
No planned changes.

Document changes:

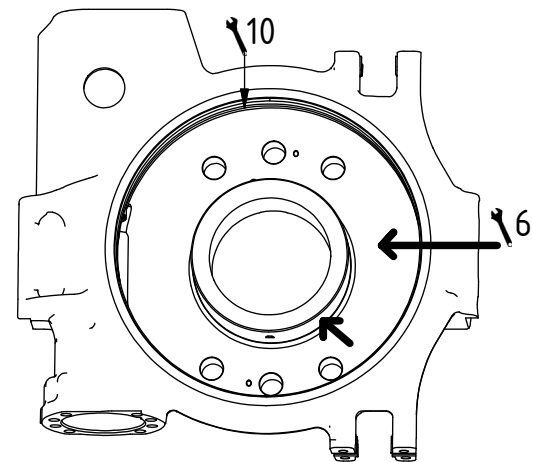
Date:	Change:	Rev. after change:
2018-11-28	New instructions added: Without Swivel/QSM.	H
2018-07-02	Layout/irrelevant.	G
2018-04-23	Pipe plug for MACS moved position/location.	F
2017-10-16	Sensor for MACS replaced, new distance 3mm.	E
2017-08-04	Clarifying photo for hoses added. Coversheet added.	D

EC214 - Rotator frame

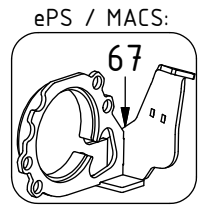
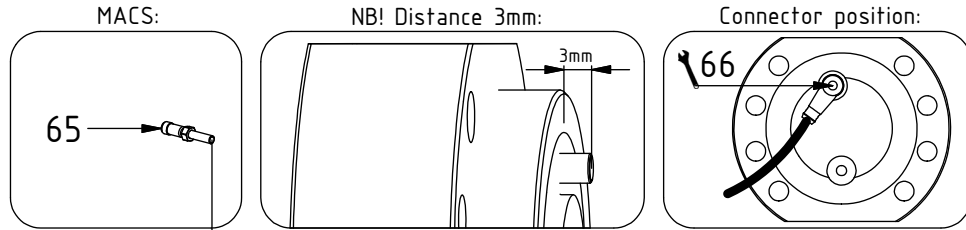
POS in order of assembly



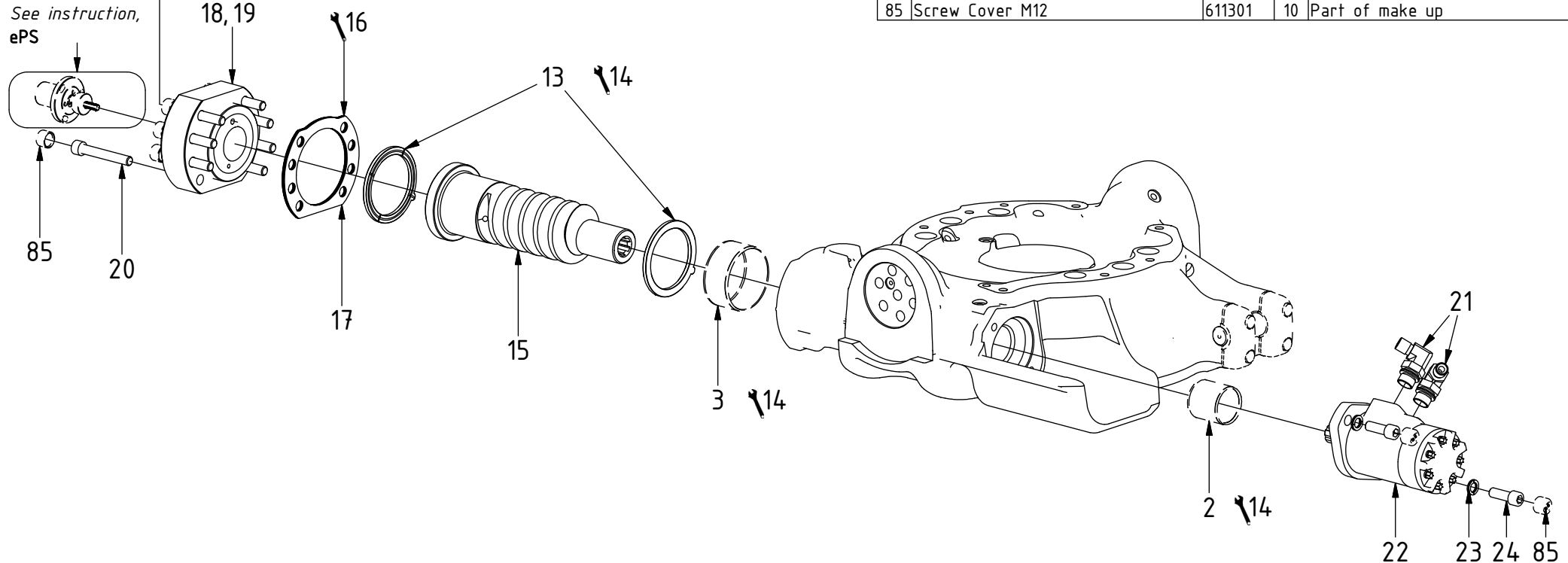
POS	DESCRIPTION	PART	QTY	COMMENTS
1	Rotator frame EC214	1025822	1	(POS.2-3 included)
2	Bushing WB802 45/50x50	630102	1	
3	Bushing 80/85x40	630103	1	
4	Note serial/cast/manufacturing numbers according to module card			
5	Make sure all bushings, threads and holes are free from debris			
6	Grease area in rotator frame connecting to worm wheel			
7	Worm wheel EC214	1016531	1	
8	Grease area of worm wheel connecting to o-ring and bearing ring			
9	O-ring 160x5	712425	1	
10	Oil area in rotator frame connecting to bearing ring			
11	Bearing ring	1016538	1	
12	Assemble bearing ring against worm wheel in turning motions using M8x100 screws. Adjustment on p.4 when motor is assembled			
27	Screw TX40 M8x30	612201	10	Torque: 34Nm
68	Magnet 8x5x3	6000047	1	Loctite 415. Harden 1 minute
69	Punch serial number into rotator frame			
70	Feather Key	650102	6	Part of quick hitch assembly
71	O-ring 249,3x5,7	712424	1	Part of quick hitch assembly
72	MC6S M16x90	610530	14	Torque: 333Nm. Also part of quick hitch assembly: QTY 12



EC214 - Rotator frame

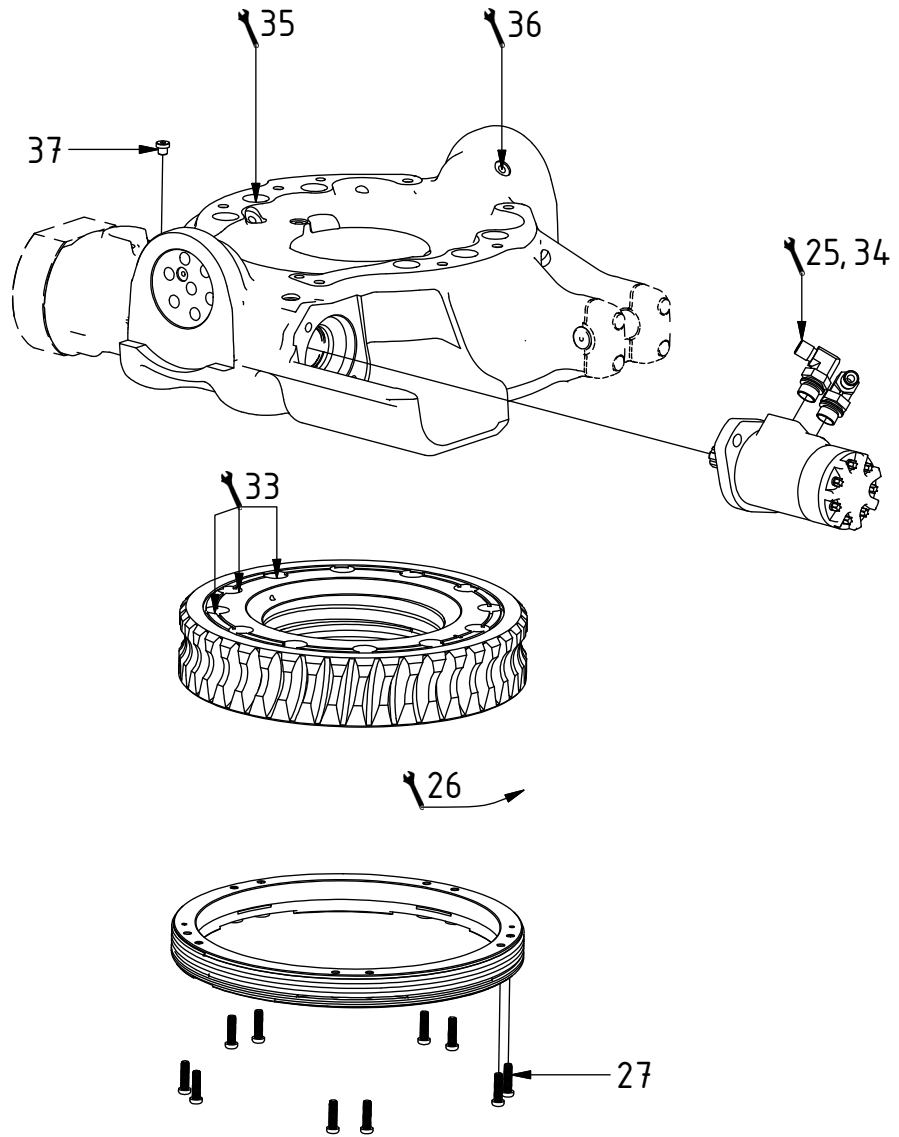


See instruction, ePS

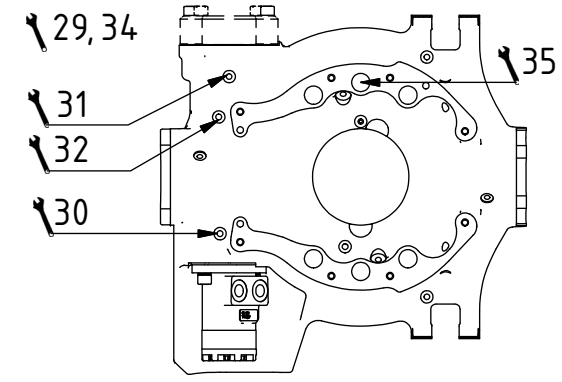
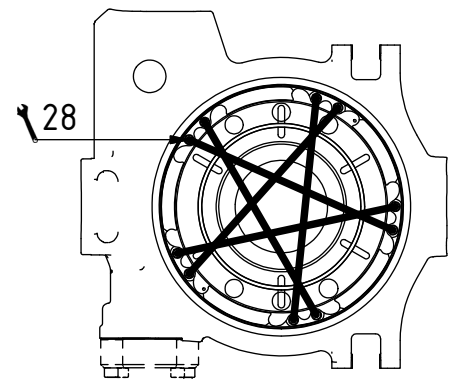


POS	DESCRIPTION	PART	QTY	COMMENTS
2	Bushing WB802 45/50x50	630102	1	
3	Bushing 80/85x40	630103	1	
13	Axial washer (with ear)	1010758	2	Face groove toward worm screw
14	Grease axial washer and bushings in rotator frame generously			
15	Worm Screw EC219	1016408	1	
16	Rotation play: 0,05mm - 0,20mm			Note rotation play on module card
17	Shims kit End lock 0,3-0,4-0,5-0,8-0,9-1,1 mm	1034434	1	(1016421, 1016422, 1016423, 1025221, 1025222, 1025223 included)
18	End lock	1016415	1	For standard & option MACS
19	End lock ePS	1016557	1	For option ePS
20	Screw MC6S 12x80	610484	8	Torque: 136Nm
21	Adapter 90°	710157	2	Assemble before connecting motor to rotator frame
22	Motor CL131CC	720112	1	
23	Washer NL 12mm	611042	2	
24	Socket Head Screw 12x35	610578	2	Torque: 136Nm
65	Inductive sensor M8 PNP MACS	1043698	2	Distance 3mm. Nut torque: 3Nm
66	Attach temporary connector, turn clockwise into position, disconnect connector, tighten with nut			
67	Protection ePS/MACS	1033565	1	
85	Screw Cover M12	611301	10	Part of make up

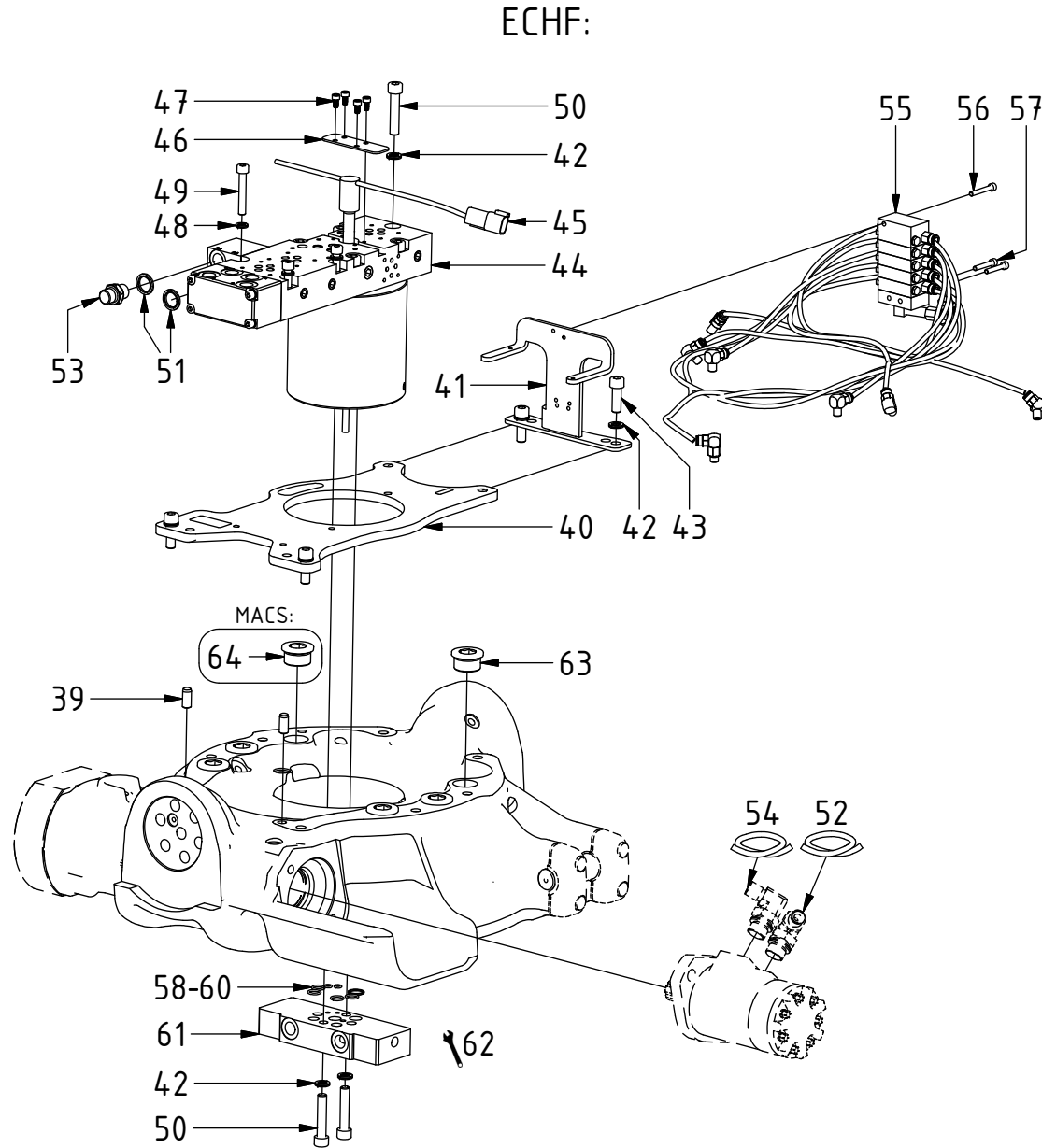
EC214 - Rotator frame



POS	DESCRIPTION	PART	QTY	COMMENTS
25	Attach temporary quick couplings to activate hydraulic motor			Connect return hose to inner adapter, closest to rotator frame
26	Tighten bearing ring by hand while rotating worm wheel until hydraulics starts swaying. Loosen bearing ring and without hydraulics retighten until it nudges the worm wheel. Loosen bearing ring by 3cm			
27	Screw TX40 M8x30	612201	10	Torque: 34Nm
28	Tighten screws in CROSS PATTERNS evenly on both sides. Then torque tighten in cross patterns. Repeat torque once more			
29	Attach temporary grease nipples			
30	Fill with grease while rotating			
31	Fill with grease while rotating, 5 seconds. Disconnect the temporary grease nipple			
32	Fill until grease emerges from POS.31			
33	Rotate worm wheel until the holes matches the holes in rotator frame. The head of Screw 16x90 (POS.72) may be used as measurement			Attention, do not measure using your fingers!
34	Disconnect the temporary quick couplings and remaining grease nipples			
35	Check that no grease fills the holes mounting to quick hitch			
36	Central Lubrication is applied gradually, finish at POS.55			See "Central lubrication"
37	Plug Bsp 1/8"	711503	1	



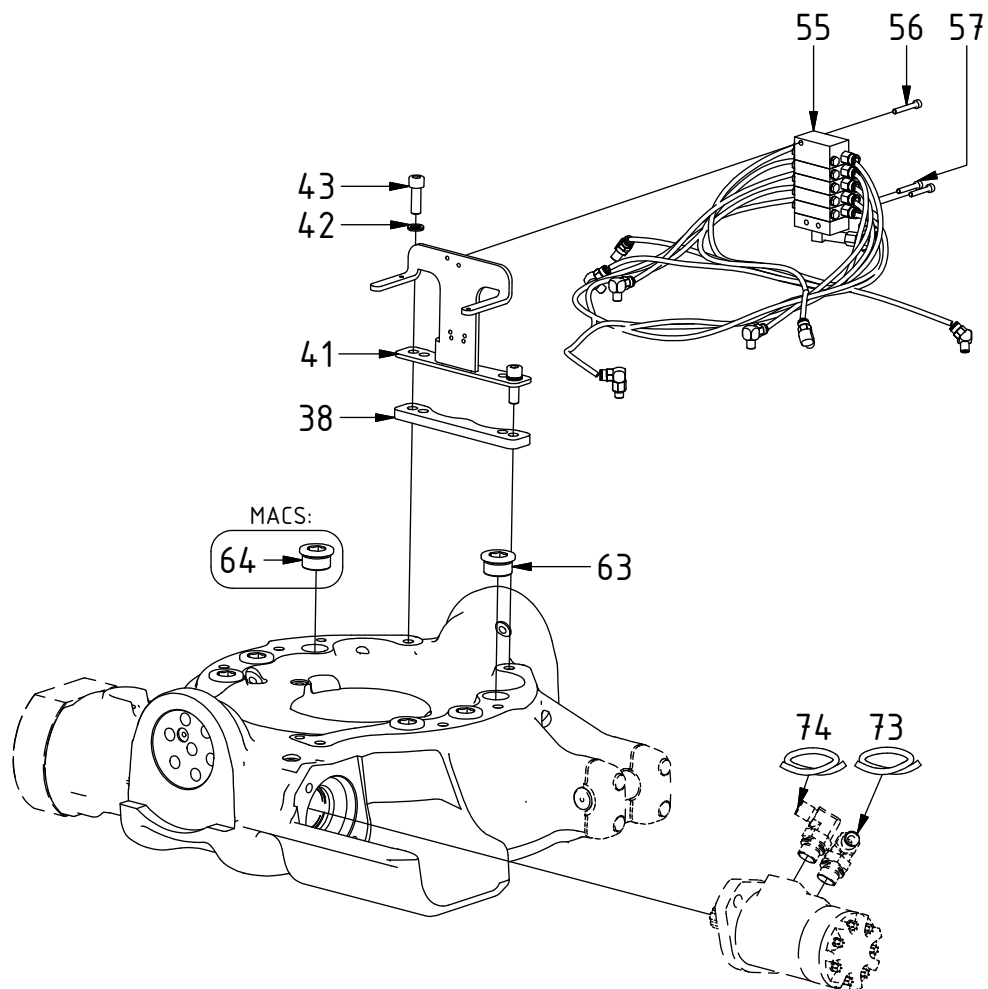
EC214 - Rotator frame



POS	DESCRIPTION	PART	QTY	COMMENTS
39	Cylindrical pin	1020539	2	
40	Valve plate	1026199	1	
41	Mounting plate lube. ECHF/QSM	1031517	1	
42	Washer NL 10mm	611041	19	
43	Socket Head Screw 10x30	610452	4	
44	Valve block & Swivel Complete without slipping ECHF	1027386	1	See "Valve blocks & Swivels"
45	Kit Slip ring ECHF DTM	1030298	1	For QS, see "Slip rings"
46	Cover plate slip ring	1026200	1	
47	Socket Head Screw MC6S 5x10	610594	4	
48	Washer NL8	611040	5	
49	Socket Head Screw 8x50	610439	5	
50	MC6S M10x50	610457	11	
51	Sealing washer 3/8"	710703	2	
52	Hose hydraulic motor Long	743005	1	
53	Adapter 3/8"	710106	1	
54	Hose hydraulic motor Short	743006	1	
55	Lubrication kit	1026699	1	See "Central lubrication"
56	Socket Head Screw 5x35	610404	1	
57	Socket Head Screw 5x30	610403	2	
58	O-ring 6,07x1,78	712422	2	
59	O-ring 12,42x1,78	710973	4	
60	O-ring 15,6x1,78	710912	1	
61	Connection block ECHF	1028391	1	
62	Guide with spring pin			Spring pin included in swivel
63	Pipe plug M30x1,5	650410	6	QTY: 5 for option MACS
64	Pipe plug M8x1 MACS	650412	1	

EC214 - Rotator frame

Without Swivel / QSM:



POS	DESCRIPTION	PART	QTY	COMMENTS
38	Spacer central lubrication QSM	1047832	1	
41	Mounting plate lube. ECHF/QSM	1031517	1	
42	Washer NL 10mm	611041	19	
43	Socket Head Screw 10x30	610452	4	
55	Lubrication kit	1026699	1	See "Central lubrication"
56	Socket Head Screw 5x35	610404	1	
57	Socket Head Screw 5x30	610403	2	
63	Pipe plug M30x1,5	650410	6	QTY: 5 for option MACS
64	Pipe plug M8x1 MACS	650412	1	
73	Hose hydraulic motor Short QSM	7000789	1	Part of quick hitch assembly
74	Hose hydraulic motor Long QSM	7000790	1	Part of quick hitch assembly

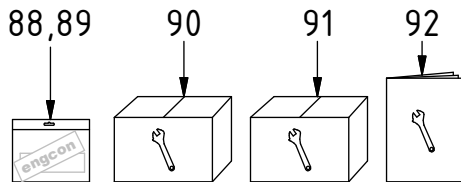
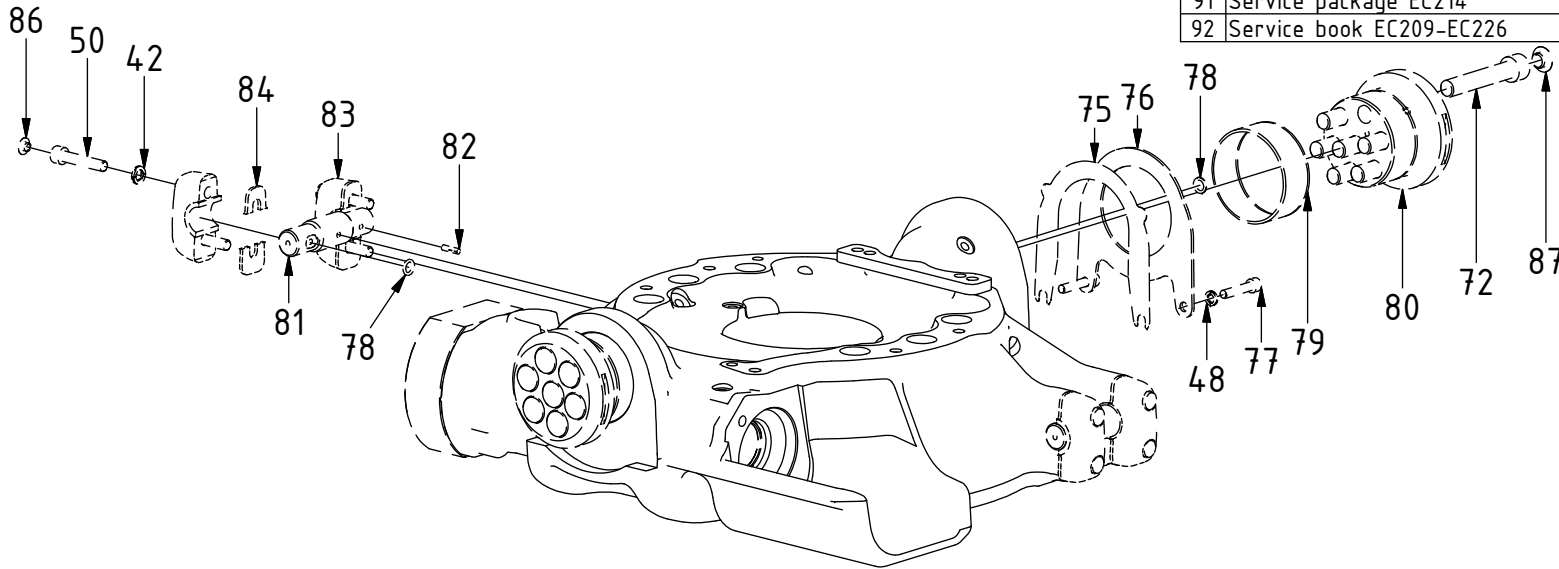
POS in order of assembly

EC214 - Rotator frame

Top part, service, make up

POS	DESCRIPTION	PART	QTY	COMMENTS
42	Washer NL 10mm	611041	19	
48	Washer NL8	611040	5	
50	MC6S M10x50	610457	11	
72	MC6S M16x90	610530	14	Torque: 333Nm. Also part of quick hitch assembly: QTY 12
75	Shims tilt axle	1016420	1	
76	Tilt axle washer	1016417	1	
77	MC6S M8x40	610437	2	
78	O-ring 9,92x2,62	710968	4	QTY: 8 for option Wide
79	Bushing 85/90x35	630321	2	
80	Tilt axle	1016416	2	
81	Cylinder axle	1016458	2	
82	Slotted pin	640413	2	QTY: 4 for option Wide
83	Clamping half	1022942	4	(POS.84 included)
84	Rubber spacer clamping half	1016439	4	
86	Screw Cover M10 Clamping half	1021468	8	Part of make up
87	Screw Cover M16 Cast yoke	1004801	14	Part of make up
88	Sticker kit - EC214	1033124	1	Part of make up
89	Sticker kit - EC214 GR	1033123	1	Part of make up
90	Service package EC214	1041446	1	For rotation & break play
91	Service package EC214	1041445	1	With tilt axle & cylinder axle
92	Service book EC209-EC226	922004	1	

POS in order of assembly

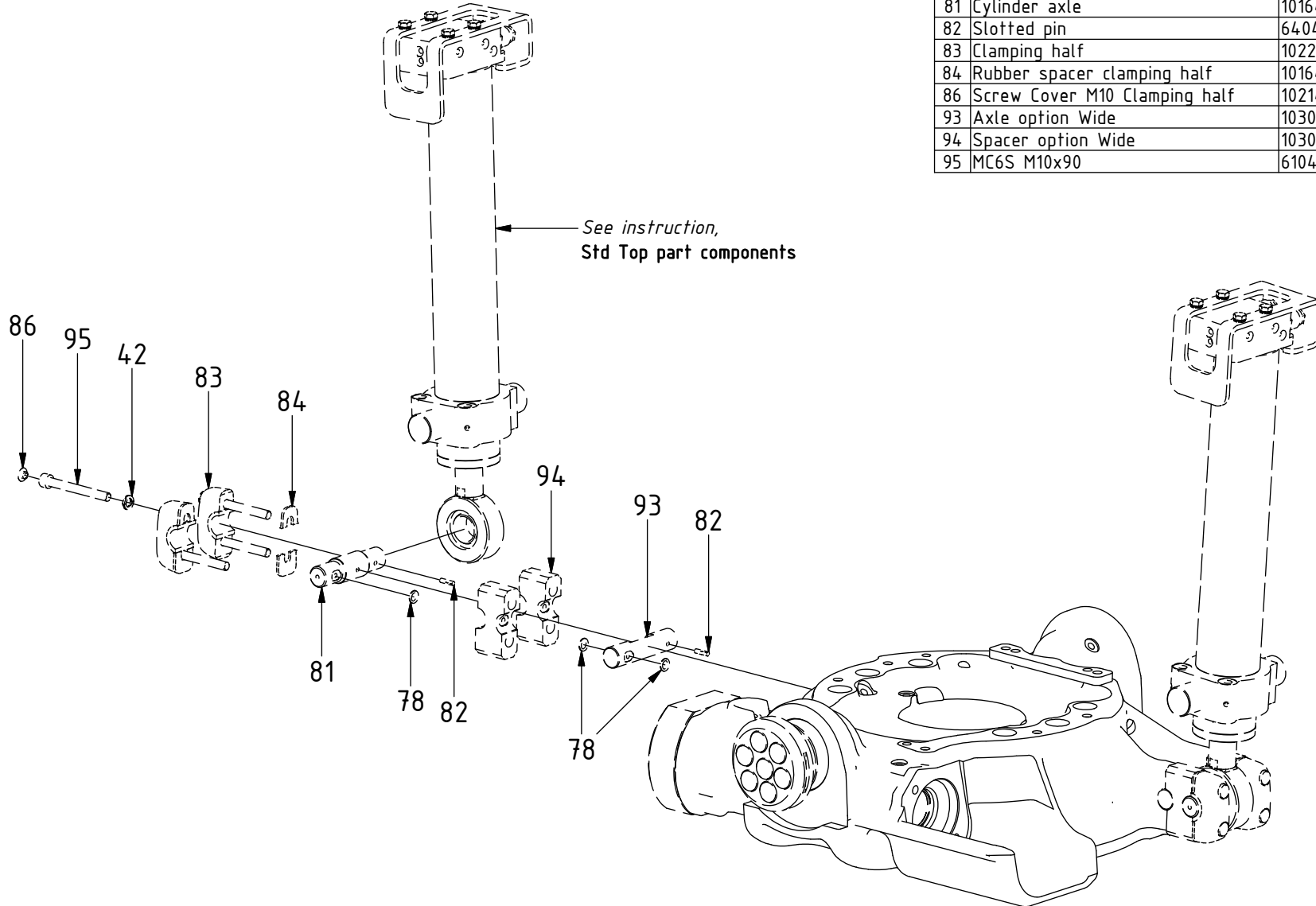


Dashed lines for overview, mounts on other pages/assemblies. indicates instruction. represents hose.

EC214 - Rotator frame

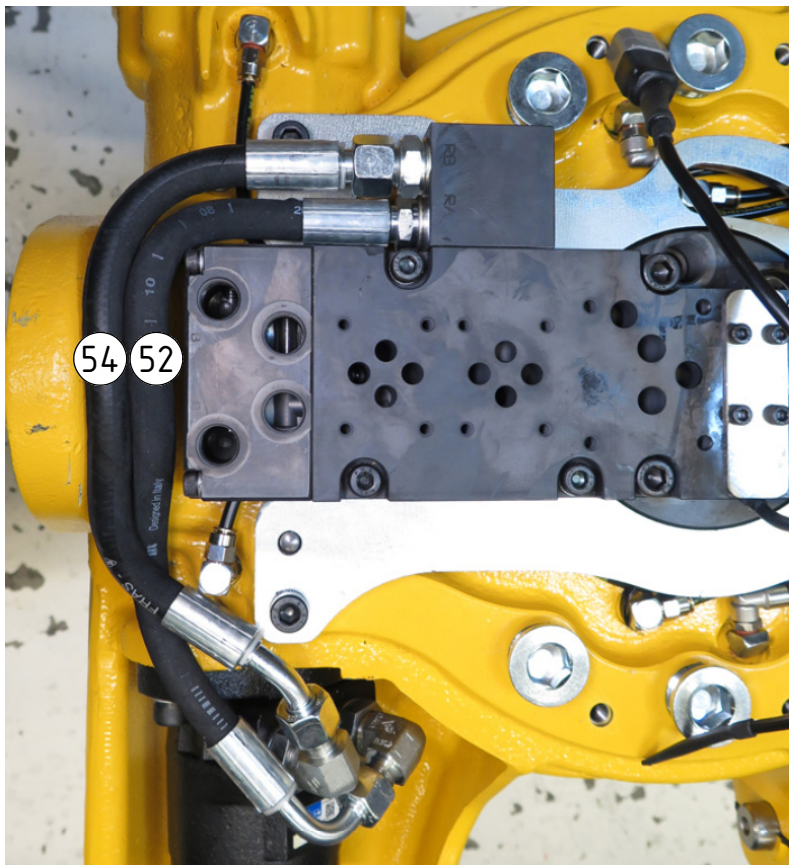
Top part, option Wide

POS	DESCRIPTION	PART	QTY	COMMENTS
42	Washer NL 10mm	611041	19	
50	MC6S M10x50	610457	11	
72	MC6S M16x90	610530	14	Torque: 333Nm. Also part of quick hitch assembly: QTY 12
78	O-ring 9,92x2,62	710968	4	QTY: 8 for option Wide
81	Cylinder axle	1016458	2	
82	Slotted pin	640413	2	QTY: 4 for option Wide
83	Clamping half	1022942	4	(POS.84 included)
84	Rubber spacer clamping half	1016439	4	
86	Screw Cover M10 Clamping half	1021468	8	Part of make up
93	Axle option Wide	1030070	2	
94	Spacer option Wide	1030069	4	
95	MC6S M10x90	610465	8	Torque: 34Nm



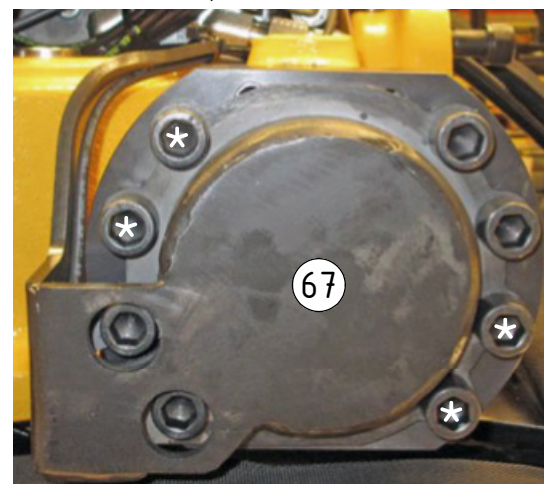
EC214 - Rotator frame

POS	DESCRIPTION	PART	QTY	COMMENTS
52	Hose hydraulic motor Long	743005	1	
54	Hose hydraulic motor Short	743006	1	
67	Protection ePS/MACS	1033565	1	
73	Hose hydraulic motor Short QSM	7000789	1	Part of quick hitch assembly
74	Hose hydraulic motor Long QSM	7000790	1	Part of quick hitch assembly



As close/tight as possible (see the circled areas)

Option ePS/MACS



*No torque until control system assembly

EC214 - Rotator frame

Related spare parts:

POS	DESCRIPTION	PART	QTY	COMMENTS
18	End lock	1016415	1	For standard & option MACS
65	Inductive sensor M8 PNP MACS	1043698	2	Distance 3mm. Nut torque: 3Nm
96	Inductive sensor M8-M12 MACS	1028045	1	Replaced by POS.65 from 2017-08 Distance 4mm. Nut torque: 3Nm
97	Pipe plug location			Current location found on p.5

