

EC219 - Control system 9

Published:2014-08-04

Drawing No:1022227/B

COVERSHEET

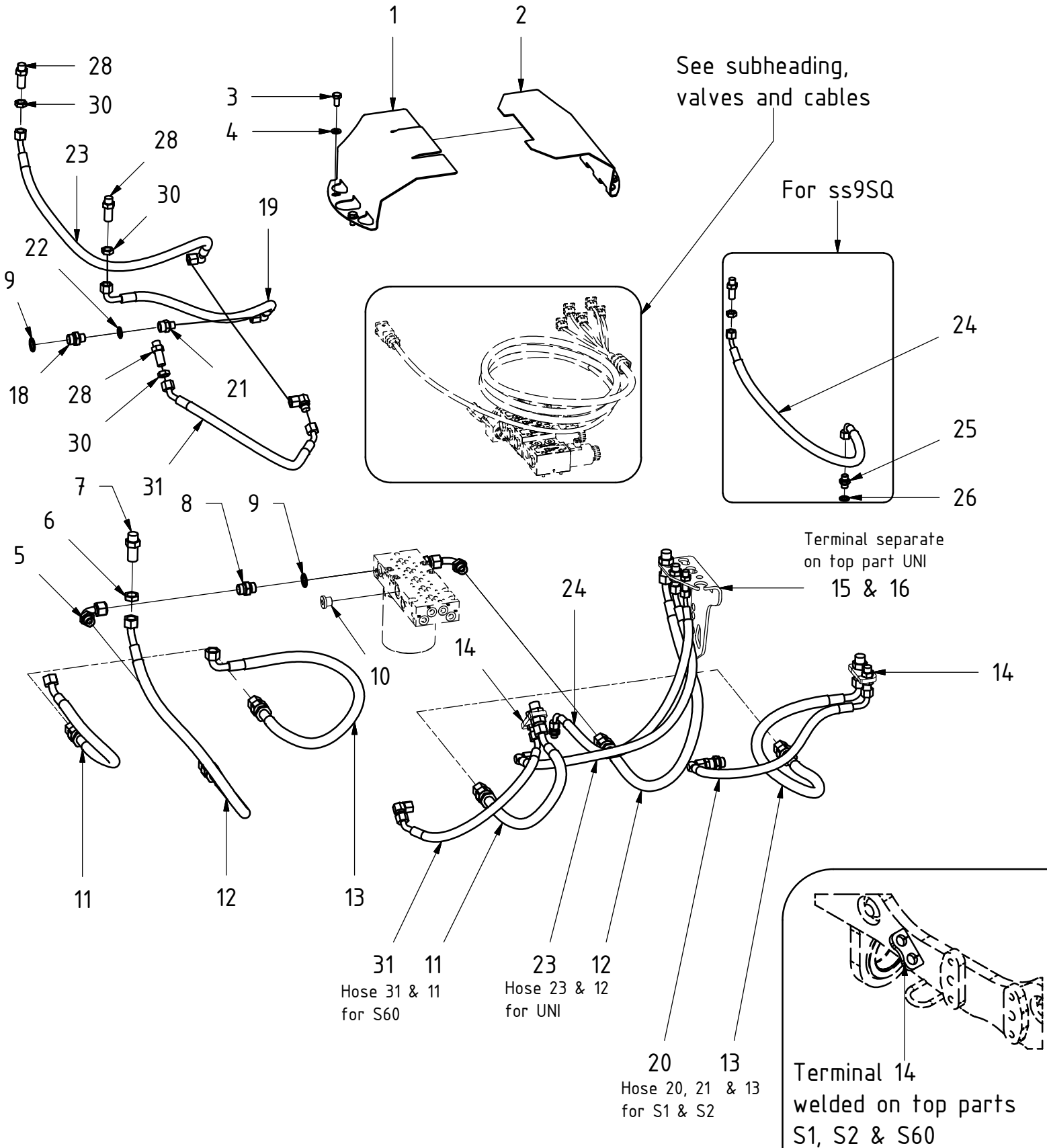
Planned document changes:

Valve protection with lip: 1027796. It replaces 1025997 from 2015-02. 1025997 replaces POS.1 from 2014-07.
Valve protection: 1027795. It replaces 1025998 from 2015-02. 1025998 replaces POS.2 from 2014-07.

EC219 - Control system 9

Published: 2014-08-04

Drawing No: 102227/B



EC219 - Control system 9

Published:2014-08-04

Drawing No:1022227/B

POS	DESCRIPTION	PART	QTY	COMMENTS
1	Coverplate half with lip EC219	1016424	1	
2	Coverplate half EC219	1016425	1	
3	Hex Head Screw 10 x 20	610141	4	
4	Flat Washer	611006	4	
5	Adapter 90° 488-08-08	712209	2	
6	Nut 1275-08 (1/2")	710254	2	
7	Bulkhead connector (1/2")	710244	2	
8	Adapter 136-08-08	710108	2	
9	Sealing washer 08 (1/2")	710704	4	
10	Plug-08	711500	4	
11	Hose T/P 1/2" S60	742607	2	For welded terminal - S60
12	Hose T/P 1/2" UNI	742620	2	For separate terminal - UNI
13	Hose T/P 1/2" S1 & S2	742621	2	For welded terminal - S1 & S2
14	Terminal Welded S60, S1 & S2	1018867	2	For S60, S1 & S2
15	Terminal Left UNI	1005725	1	For UNI
16	Terminal Right UNI	1005726	1	For UNI
17	Adapter 704-06	710216	2	
18	Adapter 135-06-08	710122	2	
19	Hose R 3/8" S1 & S2 Right	742316	1	For welded terminal - S1 & S2
20	Hose R 3/8" S1 & S2 Left	742317	1	For welded terminal - S1 & S2
21	Adapter 236-06-06	710131	2	
22	Sealing washer 06 (3/8")	710703	2	
23	Hose R 3/8" UNI	742622	2	For separate terminal - UNI
24	Hose Lock 3/8" UNI	742623	2	For ss9SQ
25	Adapter 136-04-04	100216	2	
26	Sealing washer 04 (1/4")	710702	2	
27	Bulkhead connector (1/4")	710240	2	
28	Bulkhead connector (3/8")	710242	6	
29	Nut 1275-04 (1/4")	710250	2	
30	Nut 1275-06 (3/8")	710252	6	
31	Hose R 3/8" S60	742608	2	For welded terminal - S60