

COVERSHEET

Planned document changes:

Briefly:

No planned changes.

Document changes:

Date:	Change:	Rev. after change:
2024-04-05	Part no for tiltrotator module corrected.	E
2024-01-09	Spare parts clarified.	D
2023-12-15	Coversheet added.	C

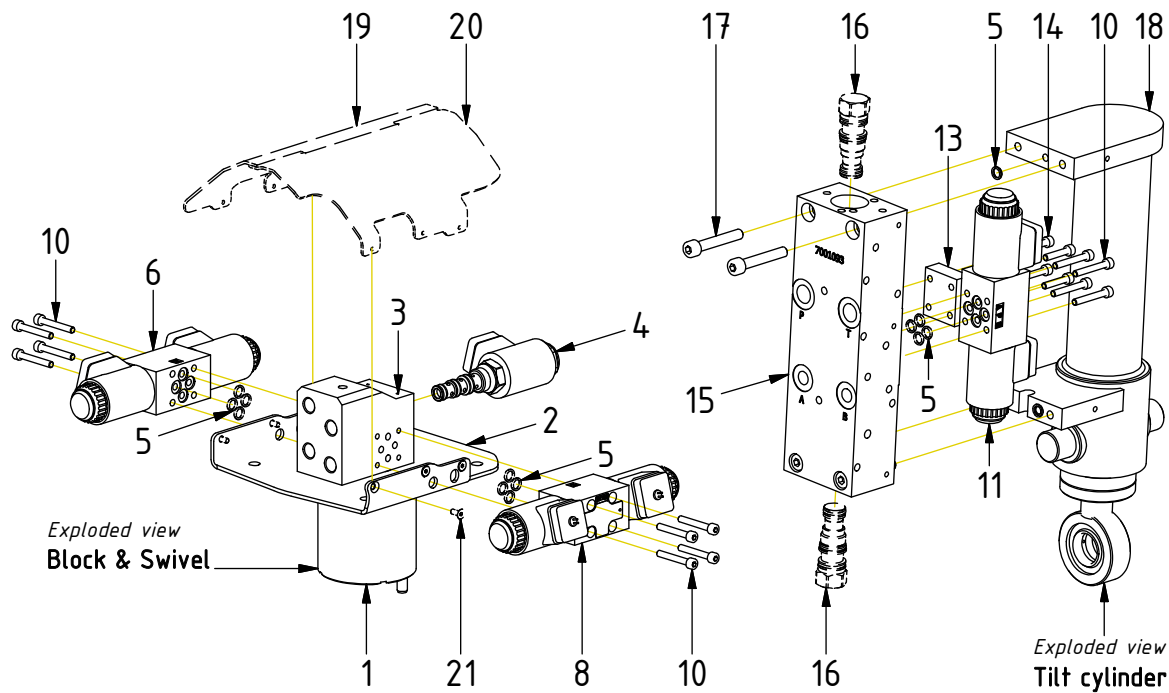
Readers note:

Indicates instruction.



Represents Hose.

Dashed lines for overview, mounts
on other pages/assemblies.

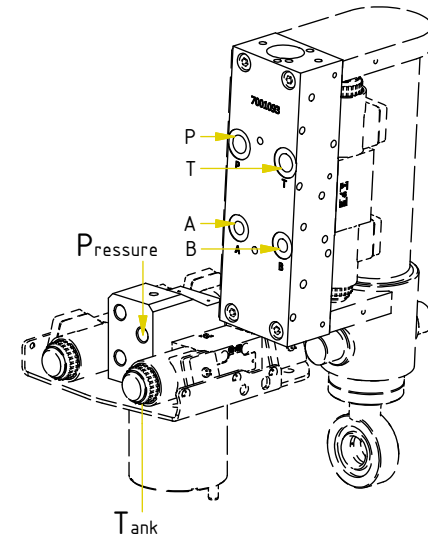
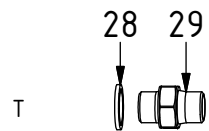
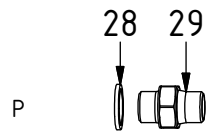
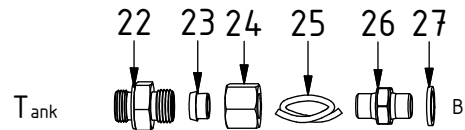
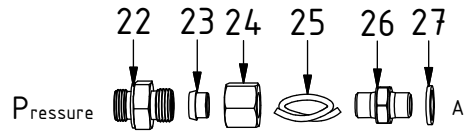


POS	DESCRIPTION	PART	QTY	COMMENTS
1	Swivel EC02 complete	303430	1	
2	Valve plate EC02	1001212	1	
3	Valve block EC02 NG4	303557	1	
4	Cartridge valve lock 12V	730147	1	
5	O-ring 7.65x1.78	710960	14	
6	Direct. valve NG4 Prop rotation 12V	730150	1	(POS.5, 7, 12 incl.)
7	Coil 12V NG4 Prop	730184	2	
8	Direct. valve NG4 12V	730146	1	(POS.5, 9, 12 incl.)
9	Coil 12V NG4 On/Off	730163	1	
10	Screw MC6S 5x35 12.9 untreated	610404	16	QTY: 12 for ss10 (SVAB)
11	Direct. valve NG4 Prop tilt 12V	730149	2	(POS.5, 7, 12 incl.)
12	Nut directional valve NG4	1006785	6	
13	Block-Overflow NG4	730151	1	
14	Screw MC6S 5x25 12.9 untreated	610402	4	
15	Valve block tilt cylinder	7001094	1	(POS.16 incl.)
16	Overcenter adjustable EC02	7000647	2	(Only compatible with current block)
17	Screw MC6S M8x50 12.9	610439	4	
18	Tilt cylinder EC02	303561	1	Part of top part
19	Protective cover EC02 Right	1004884	1	Part of make up
20	Protective cover EC02 Left	1004883	1	Part of make up
21	Screw MF6S 4x10 10.9 untreated	610605	6	Part of make up

Hoses

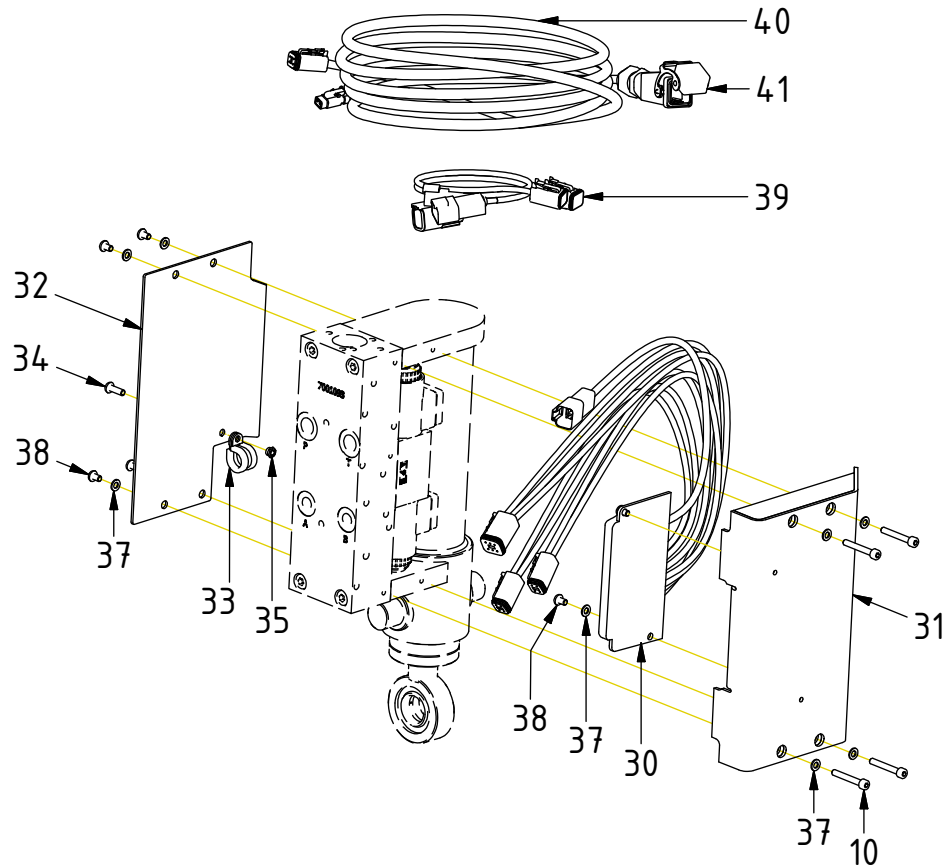
POS	DESCRIPTION	PART	QTY	COMMENTS
22	Cutting ring Connection	710343	2	
23	Cutting ring	710350	2	
24	Cutting ring Nut	710194	2	
25	Hose Feed (block)	741630	2	
26	Adapter 138-04-29 (1/4")	710135	2	
27	Washer GBR04 1/4	710702	2	
28	Washer GBR06 3/8	710703	2	
29	Adapter 136-06-06 (3/8")	710106	2	

POS in order of assembly



Cables DC2

POS	DESCRIPTION	PART	QTY	COMMENTS
10	Screw MC6S 5x35 12.9 untreated	610404	16	QTY: 12 for ss10 (SVAB)
30	Tiltrotator module EC02 DC2	841114	1	
31	Cover tilt cylinder EC02 Left DC2	1017169	1	
32	Cover tilt cylinder EC02 Right DC2	1023891	1	
33	Rubber steel clamp ø14	613009	1	
34	Screw K6S M5x16 10.9 FZB	611818	1	
35	Lock Nut M6M M5x0,8 8,8 FZB	610920	1	
37	Washer BRB 5,3x10x1 200 HV FZB	611003	14	
38	Screw K6S M5x8 10.9 FZB	611801	6	QTY: 10 for ss10 (SVAB)
39	Joint cable DC2 EC02 QSC	8001182	1	
40	Agg. cable DC2 Complete QSC	8000763	1	
41	ILME cover 12P contact with jumper	810208	1	(Incl. with agg.cable)

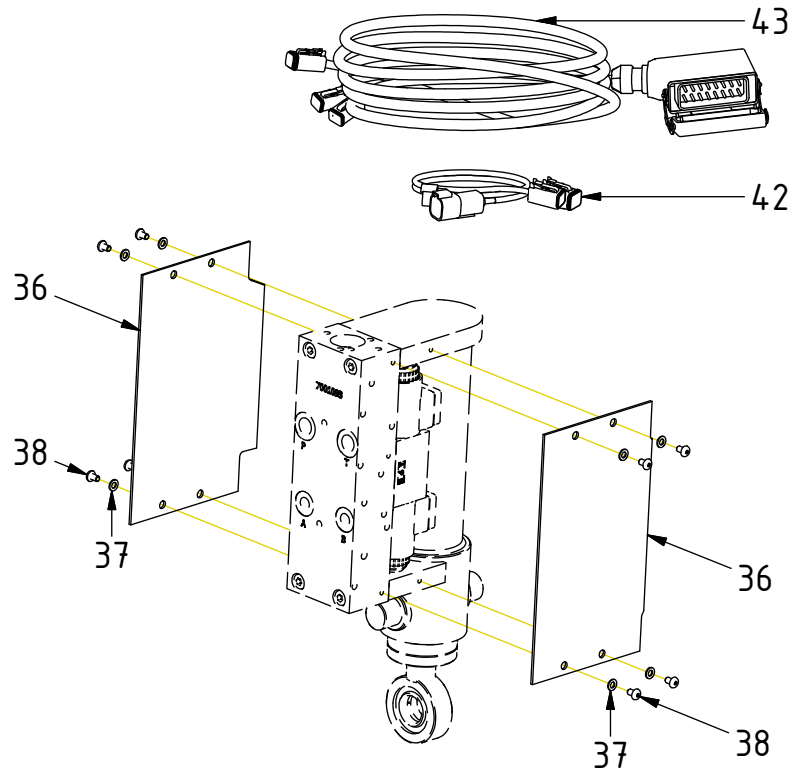


POS in order of assembly

Cables ss10 (SVAB)

POS	DESCRIPTION	PART	QTY	COMMENTS
36	Cover tilt cylinder EC02	1000046	2	
37	Washer BRB 5,3x10x1 200 HV FZB	611003	14	
38	Screw K6S M5x8 10.9 FZB	611801	6	QTY: 10 for ss10 (SVAB)
42	Joint cable EC02 SVAB	1000609	1	
43	Aggregate cable SVAB Complete	303482	1	

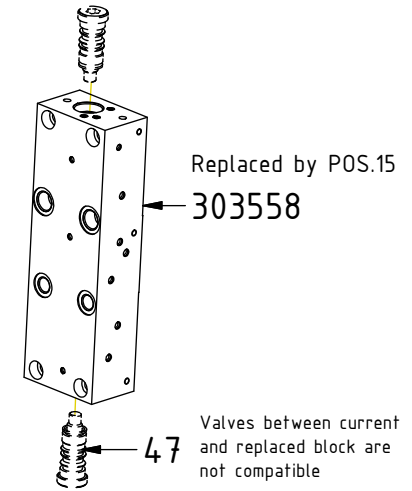
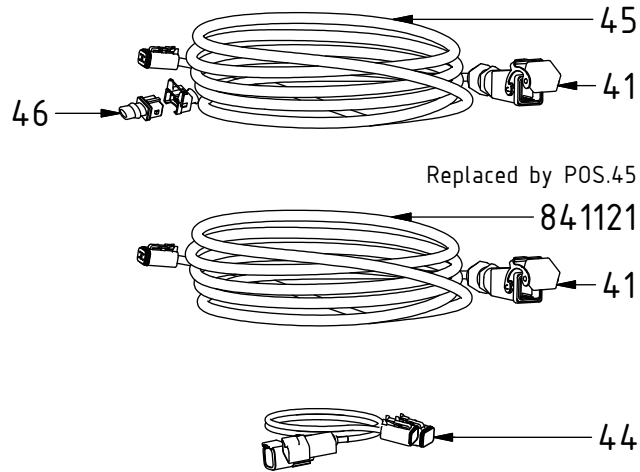
POS in order of assembly



SPARE PARTS

POS	DESCRIPTION	PART	QTY	COMMENTS
15	Valve block tilt cylinder	7001094	1	(POS.16 incl.)
16	Overcenter adjustable EC02	7000647	2	(Only compatible with current block)
39	Joint cable DC2 EC02 QSC	8001182	1	
40	Agg. cable DC2 Complete QSC	8000763	1	
41	ILME cover 12P contact with jumper	810208	1	(Incl. with agg.cable)
44	Joint cable EC02 DC2	1017230	1	Replaced by POS.39
45	Agg. cable DC2 Complete QSC (JT)	8000175	1	Replaced by POS.40
46	JT Plug	1045154	1	
47	Overcenter RJV	790142	2	(Not compatible with current block)

DC2:



POS in order of assembly