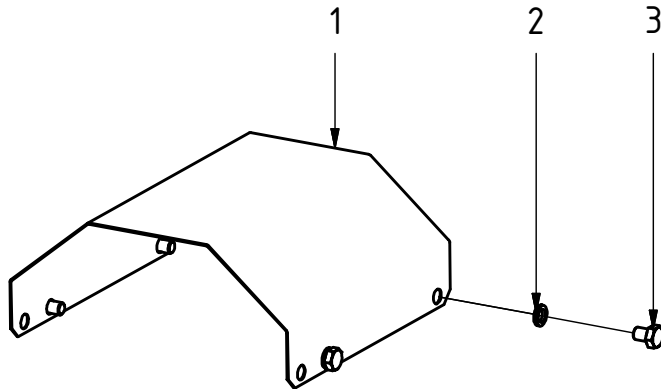


EC10B - Control System ss10 μ DC2

Published: 2013-07-04

Drawing No: 1019261/A

POS	DESCRIPTION	PART	QTY	COMMENTS
1	Coverplate EC10B	1015073	1	(h:110m)
2	Nordlock washer 10	611041	4	
3	Hex Head Screw 10 x 14	610194	4	8.8 Zinc plated ISO 4014
4	Sealing washer 08 (1/2")	710704	2	
5	Adapter 135-06-08	710122	2	
6	Plug-08	711500	4	
7	Hose T 3/8" EC10B	740182	1	
8	Hose P 3/8" EC10B	740181	1	



For valve and cable parts, see 1019245

