

S40 - Std Components

COVERSHEET

Planned document changes:

Breifly:
No planned changes.

Document changes:

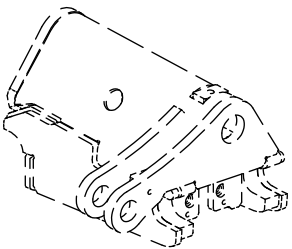
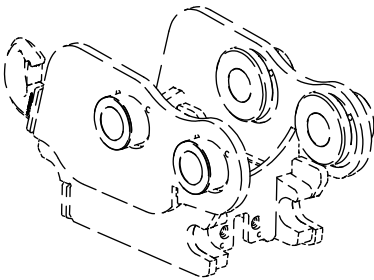
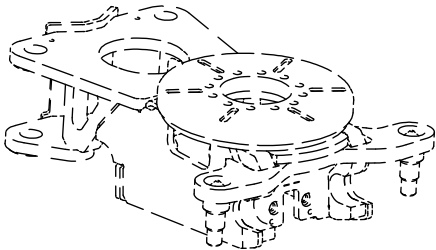
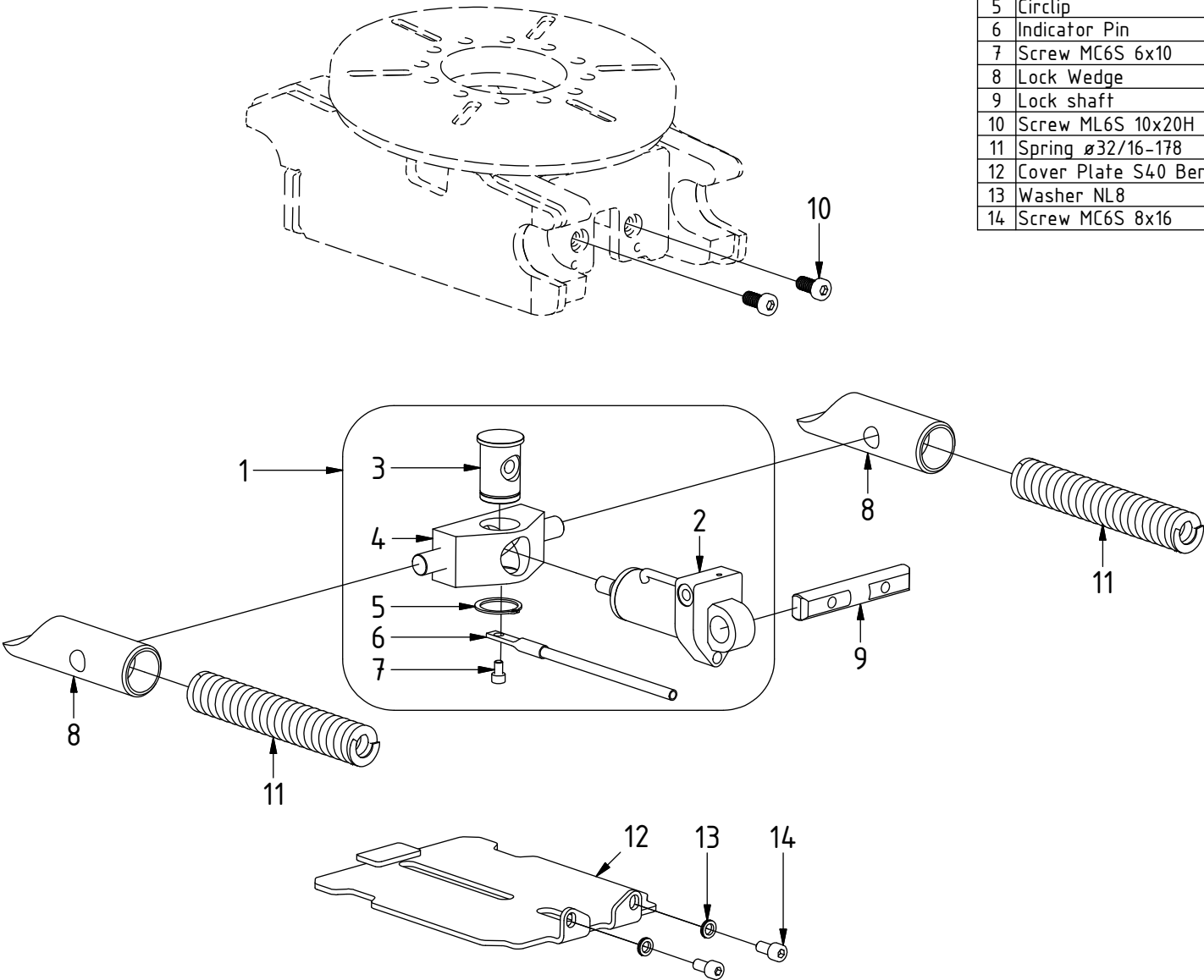
Date:	Change:	Rev. after change:
2018-06-21	Spare parts page updated.	M
2017-07-31	Replaced screw for Indicator pin.	L

S40 - Std Components

EC02, EC05B, EC204, EC206, RFS40, TFS40

POS	DESCRIPTION	PART	QTY	COMMENTS
1	Lock set Complete	1024690	1	(POS.2-7 included)
2	Lock cylinder S40	1003530	1	See "Lock cylinders"
3	Lock Pin	1024689	1	
4	Lock Yoke machined	1024688	1	
5	Circlip	640202	1	
6	Indicator Pin	1003973	1	
7	Screw MC6S 6x10	611512	1	Loctite 2700
8	Lock Wedge	302617	2	
9	Lock shaft	1003675	1	
10	Screw ML6S 10x20H	610714	2	
11	Spring ø32/16-178	640102	2	
12	Cover Plate S40 Bent	1005382	1	
13	Washer NL8	611040	2	
14	Screw MC6S 8x16	610431	2	

POS in order of assembly



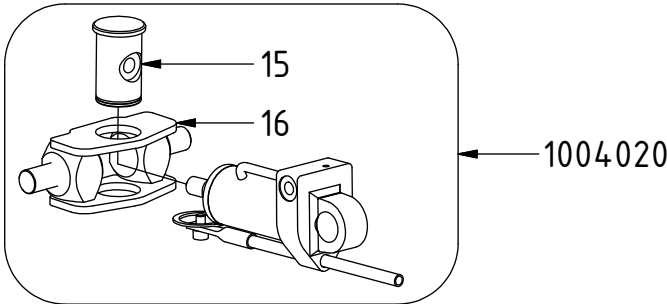
S40 - Std Components

Related spare parts:

Replaced by POS.1 from 2014-04

Replacing Lock Pin with current version: you must also replace the Yoke

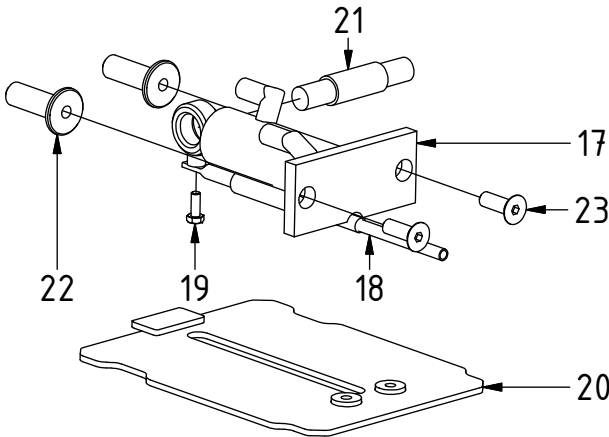
Replacing Yoke with current version: Lock Pin replacement is optional



POS	DESCRIPTION	PART	QTY	COMMENTS
1	Lock set Complete	1024690	1	(POS.2-7 included)
2	Lock cylinder S40	1003530	1	See "Lock cylinders"
3	Lock Pin	1024689	1	
4	Lock Yoke machined	1024688	1	
6	Indicator Pin	1003973	1	
12	Cover Plate S40 Bent	1005382	1	
15	Lock Pin	1003959	1	Replaced by POS.3 from 2014-04
16	Lock Yoke	1003559	1	Replaced by POS.4 from 2014-04
17	Lock cylinder	300783	1	Replaced by POS.2 from 2008-04
18	Indicator pin	401001	1	Replaced by POS.6 from 2008-04
19	Screw M6S 6x16	610109	1	Replaced by POS.7 from 2008-04
20	Cover Plate S40	1003977	1	Replaced by POS.12 from 2008-04
21	Lock axle	400565	1	Used until 2008-04
22	Guide pin	400611	2	Used until 2008-04
23	Screw MF6S 10x30	610635	2	Used until 2008-04

Replaced by 1004020 from 2008-04

Not compatible with current version



EC05A & TF10:

Used during 2000

- Lock cylinder S40 EC05A complete (square wedge) - 200167K
- Lock wedge S40 square EC05A/TF10 - 400365
- Axle grab cylinder GR10 (against Grab arm) - 400461